



DRILL STEM TEST REPORT

Prepared For: **Murfin Drilling Company**

250 N. Water STE 300
Wichita KS 67206

ATTN: Clayton Erickson

Jean #3-8

8-1S-37W Cheyenne,KS

Start Date: 2014.06.16 @ 11:34:00

End Date: 2014.06.16 @ 19:54:00

Job Ticket #: 58257 DST #: 1

Trilobite Testing, Inc
PO Box 362 Hays, KS 67601
ph: 785-625-4778 fax: 785-625-5620

Printed: 2014.06.24 @ 14:49:47



**TRILOBITE
TESTING, INC**

DRILL STEM TEST REPORT

Murfin Drilling Company

8-1S-37W Cheyenne, KS

250 N. Water STE 300
Wichita KS 67206

Jean #3-8

Job Ticket: 58257

DST#: 1

ATTN: Clayton Erickson

Test Start: 2014.06.16 @ 11:34:00

GENERAL INFORMATION:

Formation: **Douglas Sand -LKC "D"**

Deviated: No Whipstock: ft (KB)

Time Tool Opened: 13:41:00

Time Test Ended: 19:54:00

Test Type: Conventional Bottom Hole (Initial)

Tester: Ryan Nichols

Unit No: 58

Interval: 4175.00 ft (KB) To 4310.00 ft (KB) (TVD)

Reference Elevations: 3283.00 ft (KB)

Total Depth: 4310.00 ft (KB) (TVD)

3273.00 ft (CF)

Hole Diameter: 7.88 inches Hole Condition: Good

KB to GR/CF: 10.00 ft

Serial #: 6752

Inside

Press@RunDepth: 172.80 psig @ 4176.00 ft (KB)

Capacity: 8000.00 psig

Start Date: 2014.06.16

End Date:

2014.06.16

Last Calib.:

2014.06.16

Start Time: 11:34:01

End Time:

19:54:00

Time On Btm:

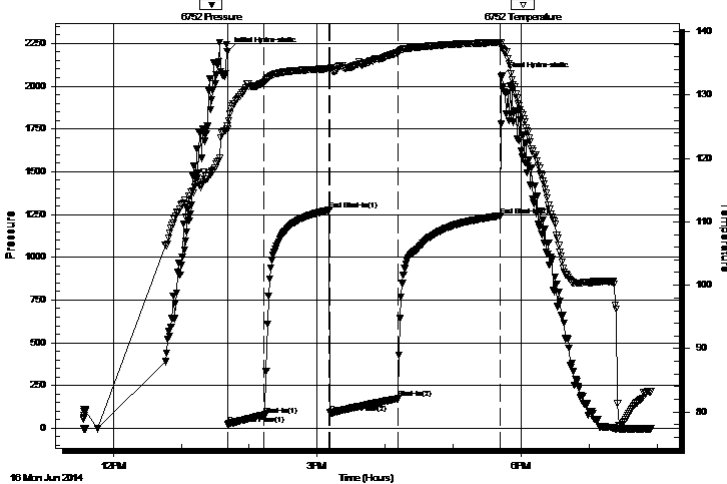
2014.06.16 @ 13:40:40

Time Off Btm:

2014.06.16 @ 17:42:30

TEST COMMENT: 30 IF - 1/2" blow built to 1 1/2"
60 ISI - No return
60 FF - Surface blow started @ 3 mins built to 1 1/2"
90 FSI - No return

Pressure vs. Time



PRESSURE SUMMARY

Time (Min.)	Pressure (psig)	Temp (deg F)	Annotation
0	2204.13	125.16	Initial Hydro-static
1	24.08	124.60	Open To Flow (1)
33	77.69	131.96	Shut-In(1)
90	1274.95	134.15	End Shut-In(1)
91	90.38	133.96	Open To Flow (2)
151	172.80	136.73	Shut-In(2)
241	1243.09	138.31	End Shut-In(2)
242	2053.65	137.59	Final Hydro-static

Recovery

Length (ft)	Description	Volume (bbl)
90.00	OMCW - 5%o - 40%M - 55%W	0.44
180.00	OMCW - 10%o - 40%M - 50%W	0.89
60.00	OWCM - 20%o - 40%W - 40%M	0.30

Gas Rates

	Choke (inches)	Pressure (psig)	Gas Rate (Mcf/d)



**TRILOBITE
TESTING, INC**

DRILL STEM TEST REPORT

TOOL DIAGRAM

Murfin Drilling Company

8-1S-37W Cheyenne,KS

250 N. Water STE 300
Wichita KS 67206

Jean #3-8

Job Ticket: 58257

DST#: 1

ATTN: Clayton Erickson

Test Start: 2014.06.16 @ 11:34:00

Tool Information

Drill Pipe:	Length: 3616.00 ft	Diameter: 3.80 inches	Volume: 50.72 bbl	Tool Weight:	2500.00 lb
Heavy Wt. Pipe:	Length: 0.00 ft	Diameter: 0.00 inches	Volume: 0.00 bbl	Weight set on Packer:	25000.00 lb
Drill Collar:	Length: 556.00 ft	Diameter: 2.25 inches	Volume: 2.73 bbl	Weight to Pull Loose:	80000.00 lb
			<u>Total Volume: 53.45 bbl</u>	Tool Chased	0.00 ft
Drill Pipe Above KB:	24.00 ft			String Weight: Initial	76000.00 lb
Depth to Top Packer:	4175.00 ft			Final	76000.00 lb
Depth to Bottom Packer:	ft				
Interval between Packers:	135.00 ft				
Tool Length:	162.00 ft				
Number of Packers:	2	Diameter: 6.75 inches			

Tool Comments:

Tool Description

Length (ft) Serial No. Position Depth (ft) Accum. Lengths

Tool Description	Length (ft)	Serial No.	Position	Depth (ft)	Accum. Lengths
Change Over Sub	1.00			4149.00	
Shut In Tool	5.00			4154.00	
Hydraulic tool	5.00			4159.00	
Jars	5.00			4164.00	
Safety Joint	2.00			4166.00	
Packer	5.00			4171.00	27.00 Bottom Of Top Packer
Packer	4.00			4175.00	
Stubb	1.00			4176.00	
Recorder	0.00	6752	Inside	4176.00	
Recorder	0.00	8322	Outside	4176.00	
Perforations	34.00			4210.00	
Change Over Sub	1.00			4211.00	
Drill Pipe	95.00			4306.00	
Change Over Sub	1.00			4307.00	
Bullnose	3.00			4310.00	135.00 Bottom Packers & Anchor

Total Tool Length: 162.00



**TRILOBITE
TESTING, INC**

DRILL STEM TEST REPORT

FLUID SUMMARY

Murfin Drilling Company

8-1S-37W Cheyenne,KS

250 N. Water STE 300
Wichita KS 67206

Jean #3-8

Job Ticket: 58257

DST#: 1

ATTN: Clayton Erickson

Test Start: 2014.06.16 @ 11:34:00

Mud and Cushion Information

Mud Type: Gel Chem

Cushion Type:

Oil API:

deg API

Mud Weight: 9.00 lb/gal

Cushion Length:

ft

Water Salinity:

23000 ppm

Viscosity: 80.00 sec/qt

Cushion Volume:

bbbl

Water Loss: 6.77 in³

Gas Cushion Type:

Resistivity: ohm.m

Gas Cushion Pressure:

psig

Salinity: 800.00 ppm

Filter Cake: 2.00 inches

Recovery Information

Recovery Table

Length ft	Description	Volume bbbl
90.00	OMCW - 5%o - 40%M - 55%W	0.443
180.00	OMCW - 10%o - 40%M - 50%W	0.885
60.00	OWCM - 20%o - 40%W - 40%M	0.295

Total Length: 330.00 ft Total Volume: 1.623 bbl

Num Fluid Samples: 0

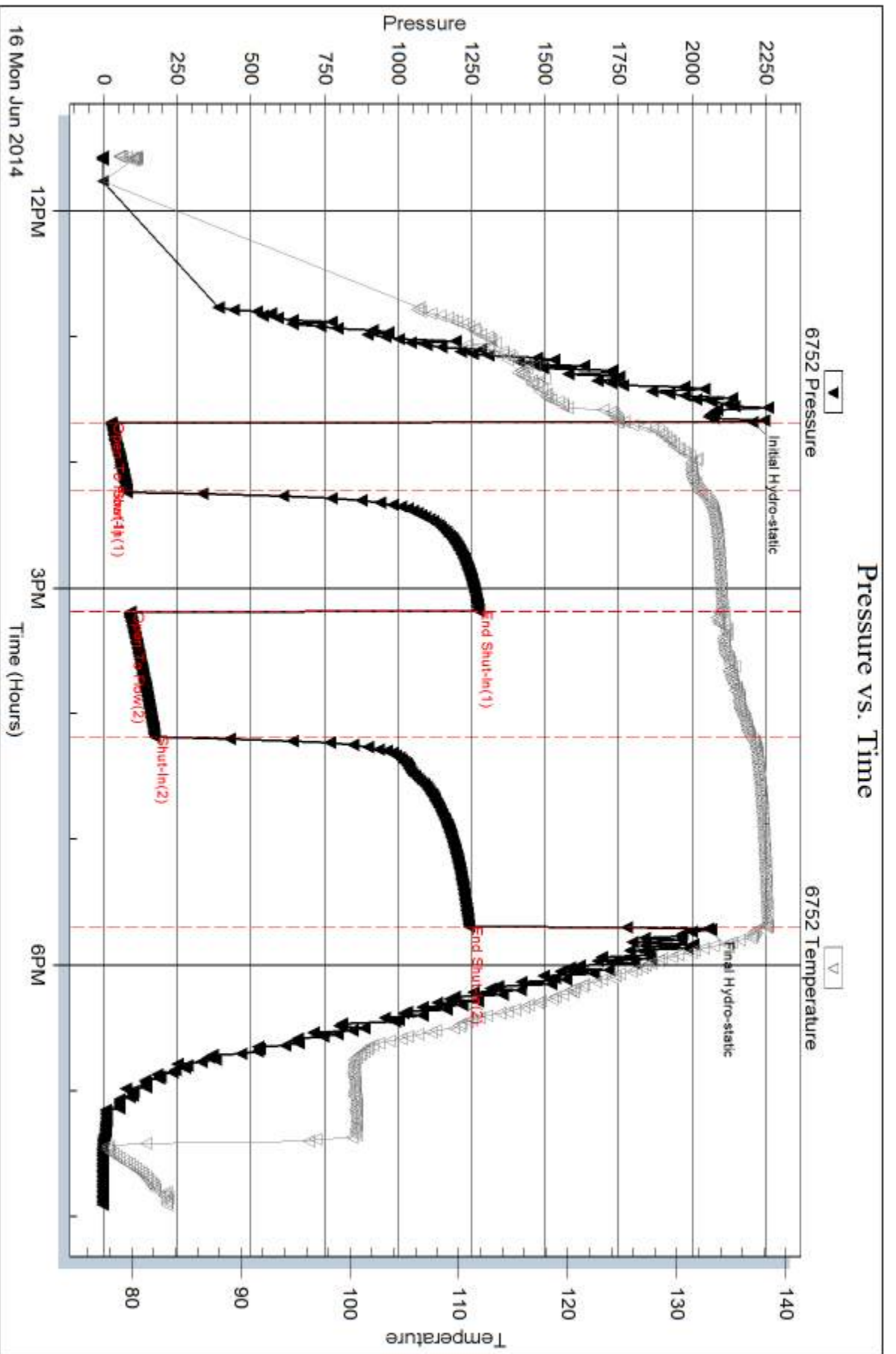
Num Gas Bombs: 0

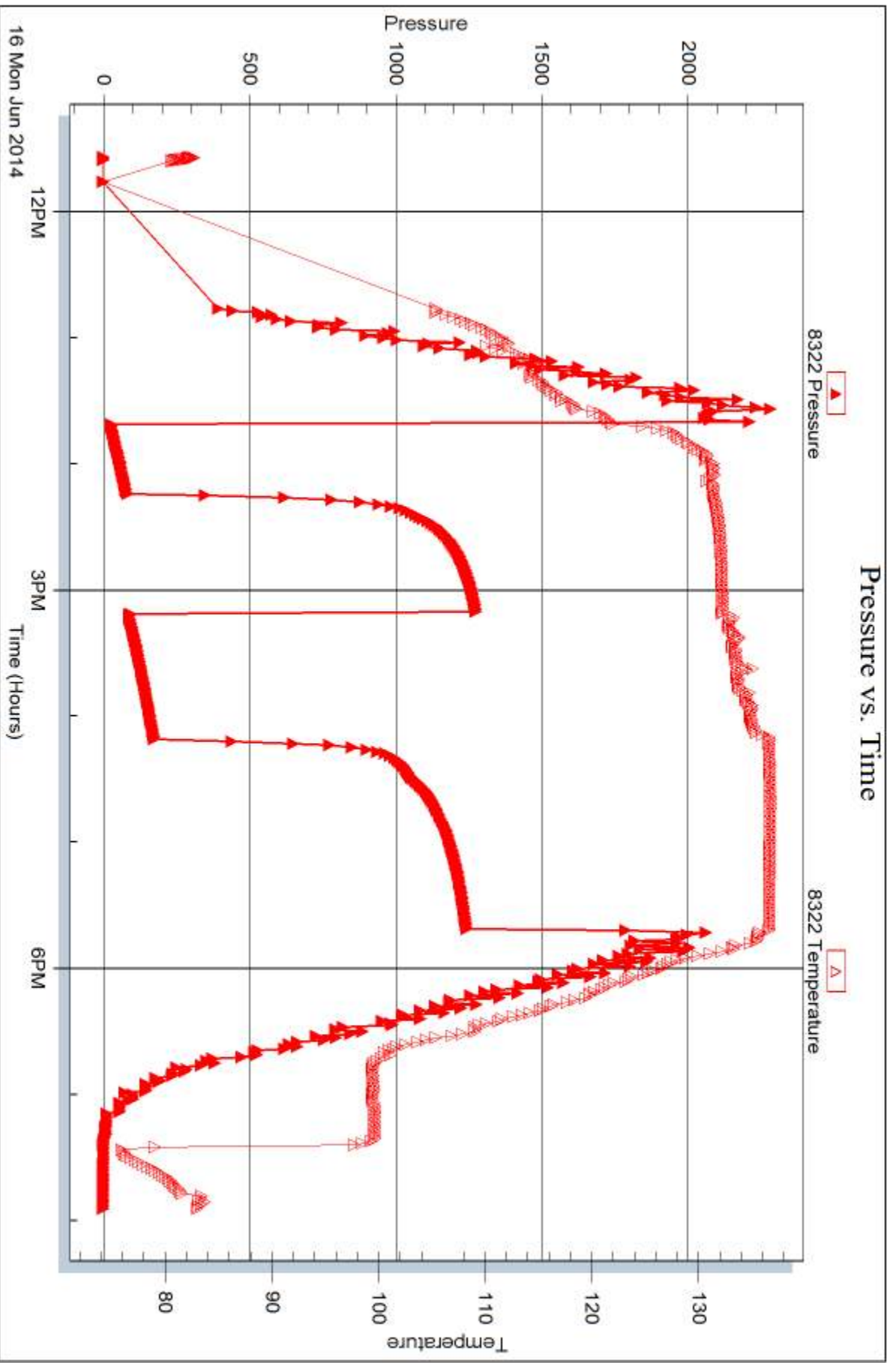
Serial #:

Laboratory Name:

Laboratory Location:

Recovery Comments: RW = .273 @ 76 DEG F







DRILL STEM TEST REPORT

Prepared For: **Murfin Drilling Company**

250 N. Water STE 300
Wichita KS 67206

ATTN: Clayton Erickson

Jean #3-8

8-1S-37W Cheyenne,KS

Start Date: 2014.06.17 @ 15:12:00

End Date: 2014.06.18 @ 00:07:10

Job Ticket #: 58258 DST #: 2

Trilobite Testing, Inc

PO Box 362 Hays, KS 67601

ph: 785-625-4778 fax: 785-625-5620

Printed: 2014.06.24 @ 14:49:25

Murfin Drilling Company
8-1S-37W Cheyenne,KS
Jean #3-8
DST # 2
LKC " G - J "
2014.06.17



**TRILOBITE
TESTING, INC**

DRILL STEM TEST REPORT

Murfin Drilling Company

8-1S-37W Cheyenne, KS

250 N. Water STE 300
Wichita KS 67206

Jean #3-8

Job Ticket: 58258

DST#: 2

ATTN: Clayton Erickson

Test Start: 2014.06.17 @ 15:12:00

GENERAL INFORMATION:

Formation: **LKC " G - J "**

Deviated: No Whipstock: ft (KB)

Time Tool Opened: 17:51:30

Time Test Ended: 00:07:10

Test Type: Conventional Bottom Hole (Reset)

Tester: Ryan Nichols

Unit No: 58

Interval: 4307.00 ft (KB) To 4465.00 ft (KB) (TVD)

Reference Elevations: 3283.00 ft (KB)

Total Depth: 4465.00 ft (KB) (TVD)

3273.00 ft (CF)

Hole Diameter: 7.88 inches Hole Condition: Good

KB to GR/CF: 10.00 ft

Serial #: 6752

Inside

Press@RunDepth: 153.57 psig @ 4308.00 ft (KB)

Capacity: 8000.00 psig

Start Date: 2014.06.17

End Date:

2014.06.18

Last Calib.:

2014.06.18

Start Time:

15:12:01

End Time:

00:07:10

Time On Btm:

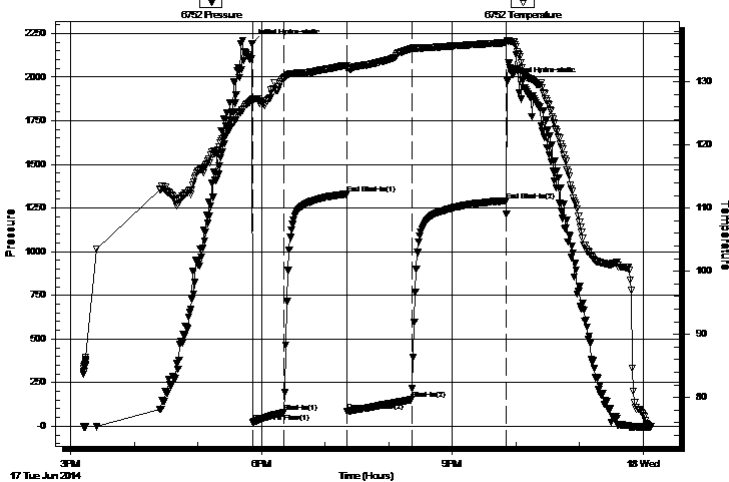
2014.06.17 @ 17:51:00

Time Off Btm:

2014.06.17 @ 21:52:00

TEST COMMENT: 30 IF - 1/4" blow built to 3"
60 ISI - No return
60 FF - Surface blow started @ 20 mins built to 2"
90 FSI - No return

Pressure vs. Time



PRESSURE SUMMARY

Time (Min.)	Pressure (psig)	Temp (deg F)	Annotation
0	2191.66	127.09	Initial Hydro-static
1	22.21	126.95	Open To Flow (1)
31	78.53	130.65	Shut-In(1)
90	1330.19	132.57	End Shut-In(1)
90	84.64	132.10	Open To Flow (2)
151	153.57	135.26	Shut-In(2)
240	1291.48	136.18	End Shut-In(2)
241	1976.75	136.56	Final Hydro-static

Recovery

Length (ft)	Description	Volume (bbl)
90.00	OWCM - 20%o - 35%W - 45%M	0.44
90.00	OCM - 5%o - 95%M	0.44
90.00	OCM - 30%o - 70%M	0.44
10.00	OCM - 50%o - 50%M	0.05

Gas Rates

	Choke (inches)	Pressure (psig)	Gas Rate (Mcf/d)

* Recovery from multiple tests



**TRILOBITE
TESTING, INC**

DRILL STEM TEST REPORT

TOOL DIAGRAM

Murfin Drilling Company

8-1S-37W Cheyenne,KS

250 N. Water STE 300
Wichita KS 67206

Jean #3-8

Job Ticket: 58258

DST#: 2

ATTN: Clayton Erickson

Test Start: 2014.06.17 @ 15:12:00

Tool Information

Drill Pipe:	Length: 3745.00 ft	Diameter: 3.80 inches	Volume: 52.53 bbl	Tool Weight:	2500.00 lb
Heavy Wt. Pipe:	Length: 0.00 ft	Diameter: 0.00 inches	Volume: 0.00 bbl	Weight set on Packer:	25000.00 lb
Drill Collar:	Length: 556.00 ft	Diameter: 2.25 inches	Volume: 2.73 bbl	Weight to Pull Loose:	80000.00 lb
			<u>Total Volume: 55.26 bbl</u>	Tool Chased	0.00 ft
Drill Pipe Above KB:	21.00 ft			String Weight: Initial	76000.00 lb
Depth to Top Packer:	4307.00 ft			Final	76000.00 lb
Depth to Bottom Packer:	ft				
Interval between Packers:	158.00 ft				
Tool Length:	185.00 ft				
Number of Packers:	2	Diameter:	6.75 inches		
Tool Comments:					

Tool Description

Tool Description	Length (ft)	Serial No.	Position	Depth (ft)	Accum. Lengths
Change Over Sub	1.00			4281.00	
Shut In Tool	5.00			4286.00	
Hydraulic tool	5.00			4291.00	
Jars	5.00			4296.00	
Safety Joint	2.00			4298.00	
Packer	5.00			4303.00	27.00 Bottom Of Top Packer
Packer	4.00			4307.00	
Stubb	1.00			4308.00	
Recorder	0.00	6752	Inside	4308.00	
Recorder	0.00	8322	Outside	4308.00	
Perforations	25.00			4333.00	
Change Over Sub	1.00			4334.00	
Drill Pipe	127.00			4461.00	
Change Over Sub	1.00			4462.00	
Bullnose	3.00			4465.00	158.00 Bottom Packers & Anchor

Total Tool Length: 185.00



**TRILOBITE
TESTING, INC**

DRILL STEM TEST REPORT

FLUID SUMMARY

Murfin Drilling Company

8-1S-37W Cheyenne,KS

250 N. Water STE 300
Wichita KS 67206

Jean #3-8

Job Ticket: 58258

DST#: 2

ATTN: Clayton Erickson

Test Start: 2014.06.17 @ 15:12:00

Mud and Cushion Information

Mud Type: Gel Chem

Cushion Type:

Oil API:

deg API

Mud Weight: 9.00 lb/gal

Cushion Length:

ft

Water Salinity:

ppm

Viscosity: 69.00 sec/qt

Cushion Volume:

bbbl

Water Loss: 5.99 in³

Gas Cushion Type:

Resistivity: ohm.m

Gas Cushion Pressure:

psig

Salinity: 800.00 ppm

Filter Cake: 2.00 inches

Recovery Information

Recovery Table

Length ft	Description	Volume bbbl
90.00	OWCM - 20%o - 35%W - 45%M	0.443
90.00	OCM - 5%o - 95%M	0.443
90.00	OCM - 30%o - 70%M	0.443
10.00	OCM - 50%o - 50%M	0.049

Total Length: 280.00 ft

Total Volume: 1.378 bbl

Num Fluid Samples: 0

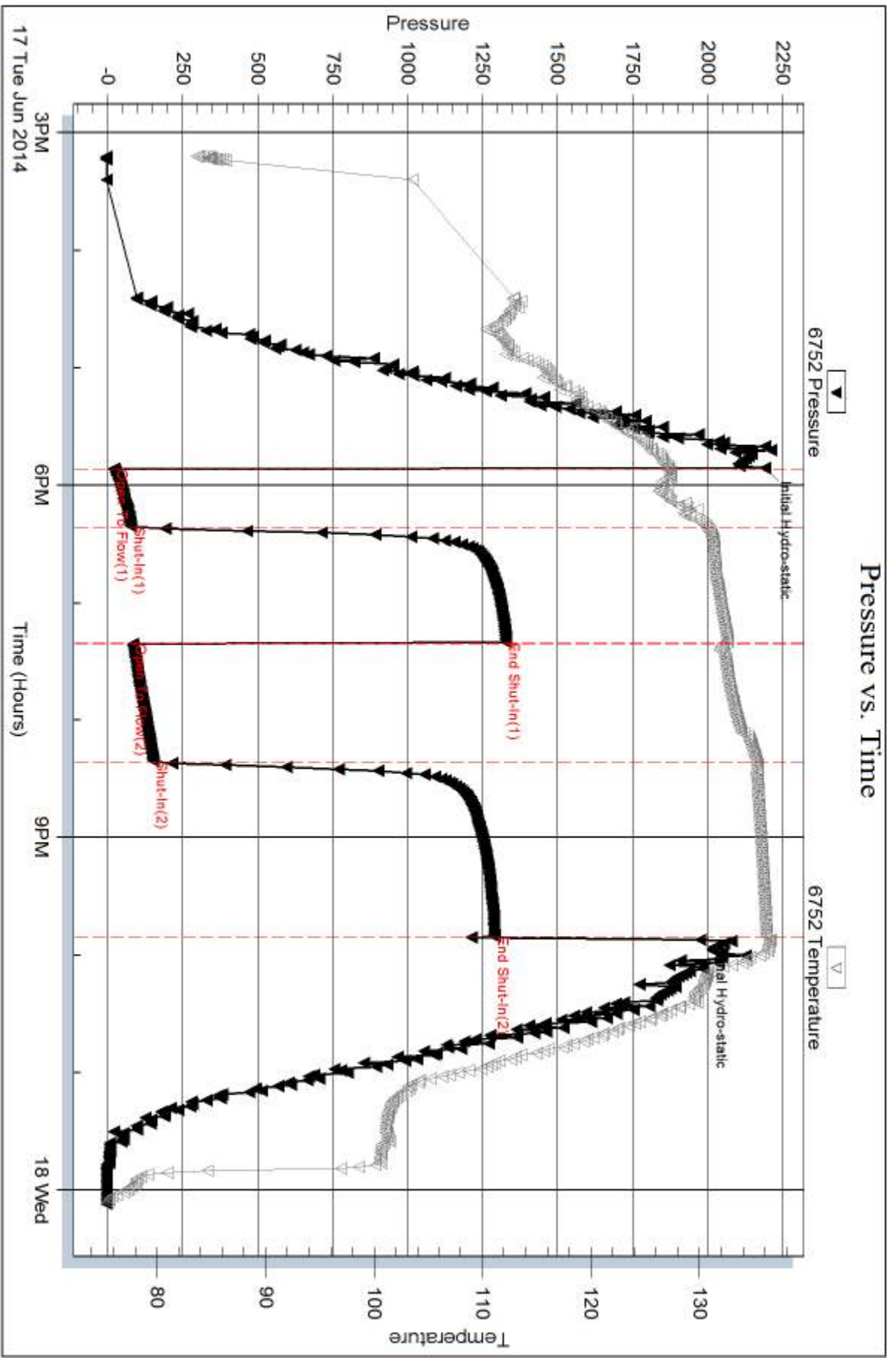
Num Gas Bombs: 0

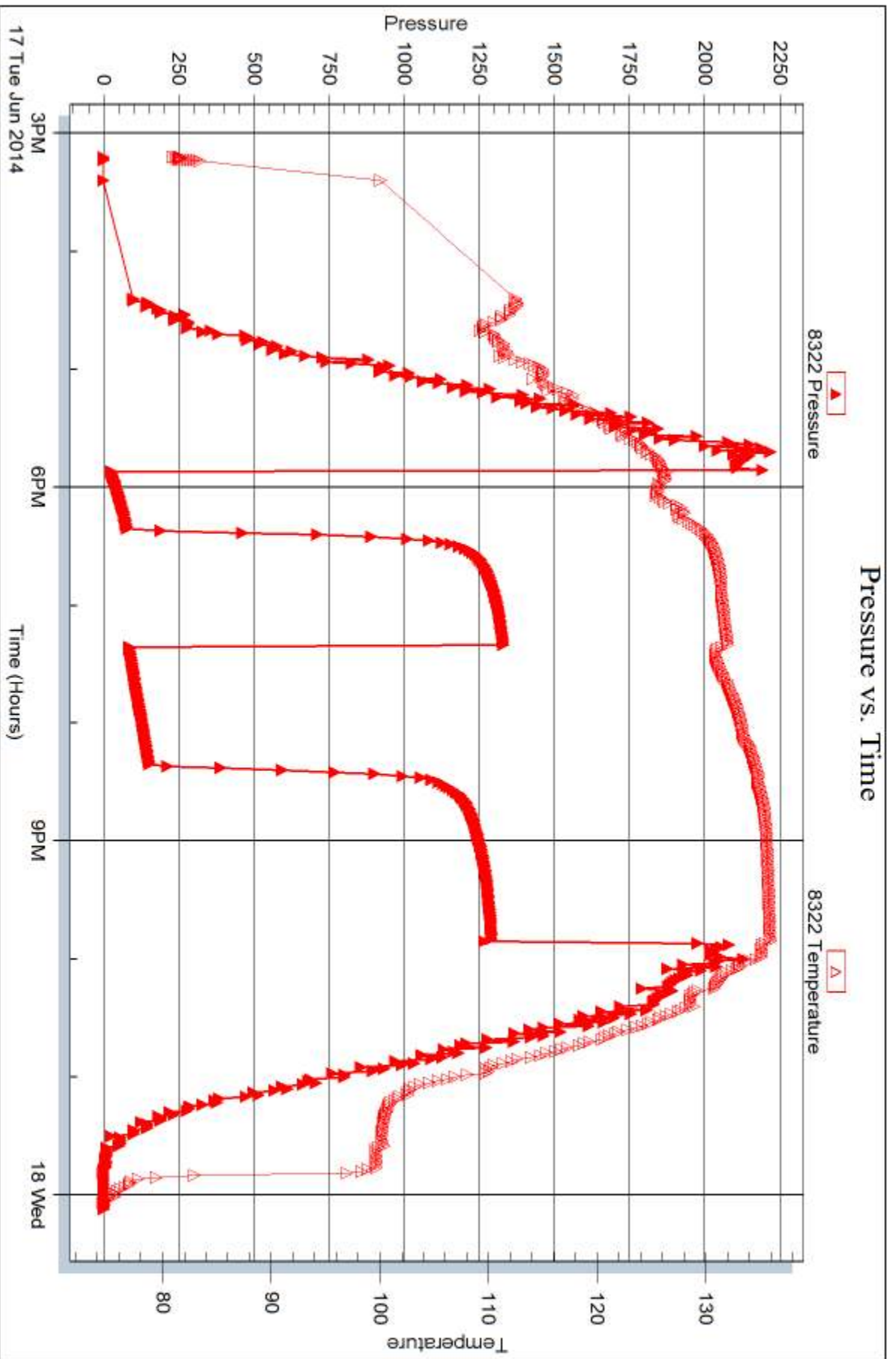
Serial #:

Laboratory Name:

Laboratory Location:

Recovery Comments:







DRILL STEM TEST REPORT

Prepared For: **Murfin Drilling Company**

250 N. Water STE 300
Wichita KS 67206

ATTN: Clayton Erickson

Jean #3-8

8-1S-37W Cheyenne,KS

Start Date: 2014.06.18 @ 20:03:00

End Date: 2014.06.19 @ 05:11:00

Job Ticket #: 58259 DST #: 3

Trilobite Testing, Inc

PO Box 362 Hays, KS 67601

ph: 785-625-4778 fax: 785-625-5620

Printed: 2014.06.24 @ 14:48:35



**TRILOBITE
TESTING, INC**

DRILL STEM TEST REPORT

Murfin Drilling Company

8-1S-37W Cheyenne, KS

250 N. Water STE 300
Wichita KS 67206

Jean #3-8

Job Ticket: 58259

DST#: 3

ATTN: Clayton Erickson

Test Start: 2014.06.18 @ 20:03:00

GENERAL INFORMATION:

Formation: **Pawnee**

Deviated: No Whipstock: ft (KB)

Time Tool Opened: 22:22:20

Time Test Ended: 05:11:00

Test Type: Conventional Bottom Hole (Reset)

Tester: Ryan Nichols

Unit No: 58

Interval: 4614.00 ft (KB) To 4662.00 ft (KB) (TVD)

Reference Elevations: 3283.00 ft (KB)

Total Depth: 4662.00 ft (KB) (TVD)

3273.00 ft (CF)

Hole Diameter: 7.88 inches Hole Condition: Good

KB to GR/CF: 10.00 ft

Serial #: 8322 Outside

Press@RunDepth: 271.65 psig @ 4615.00 ft (KB)

Capacity: 8000.00 psig

Start Date: 2014.06.18

End Date:

2014.06.19

Last Calib.:

2014.06.19

Start Time: 20:03:01

End Time:

05:11:00

Time On Btm:

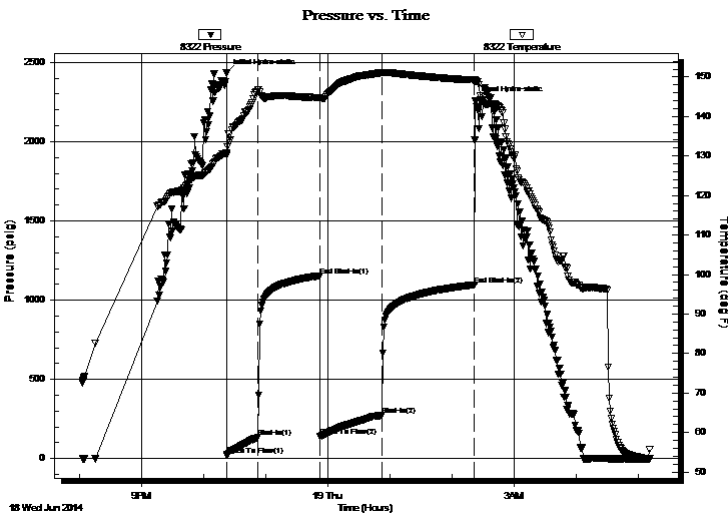
2014.06.18 @ 22:21:50

Time Off Btm:

2014.06.19 @ 02:22:10

TEST COMMENT: 30 IF - 1/4" blow built to 5 1/2"
60 ISI - No return
60 FF - Surface blow started @ 16 mins built to 4"
90 FSI - No return

PRESSURE SUMMARY



Time (Min.)	Pressure (psig)	Temp (deg F)	Annotation
0	2433.14	130.72	Initial Hydro-static
1	21.56	130.22	Open To Flow (1)
31	133.61	146.82	Shut-In(1)
91	1153.68	144.76	End Shut-In(1)
91	139.32	144.49	Open To Flow (2)
151	271.65	151.08	Shut-In(2)
240	1096.83	149.22	End Shut-In(2)
241	2256.98	148.93	Final Hydro-static

Recovery

Length (ft)	Description	Volume (bbl)
0.00	free oil in tool	0.00
370.00	MCW - 20%M - 80%W	1.82
186.00	MCW - 40%M - 60%W	0.91
24.00	MCW - 30%M - 70%W	0.34

* Recovery from multiple tests

Gas Rates

	Choke (inches)	Pressure (psig)	Gas Rate (Mcf/d)



**TRILOBITE
TESTING, INC**

DRILL STEM TEST REPORT

TOOL DIAGRAM

Murfin Drilling Company

8-1S-37W Cheyenne,KS

250 N. Water STE 300
Wichita KS 67206

Jean #3-8

Job Ticket: 58259

DST#: 3

ATTN: Clayton Erickson

Test Start: 2014.06.18 @ 20:03:00

Tool Information

Drill Pipe:	Length: 4062.00 ft	Diameter: 3.80 inches	Volume: 56.98 bbl	Tool Weight:	2500.00 lb
Heavy Wt. Pipe:	Length: 0.00 ft	Diameter: 0.00 inches	Volume: 0.00 bbl	Weight set on Packer:	25000.00 lb
Drill Collar:	Length: 556.00 ft	Diameter: 2.25 inches	Volume: 2.73 bbl	Weight to Pull Loose:	78000.00 lb
			<u>Total Volume: 59.71 bbl</u>	Tool Chased	0.00 ft
Drill Pipe Above KB:	31.00 ft			String Weight: Initial	82000.00 lb
Depth to Top Packer:	4614.00 ft			Final	78000.00 lb
Depth to Bottom Packer:	ft				
Interval between Packers:	48.00 ft				
Tool Length:	75.00 ft				
Number of Packers:	2	Diameter: 6.75 inches			

Tool Comments:

Tool Description

Tool Description	Length (ft)	Serial No.	Position	Depth (ft)	Accum. Lengths
Change Over Sub	1.00			4588.00	
Shut In Tool	5.00			4593.00	
Hydraulic tool	5.00			4598.00	
Jars	5.00			4603.00	
Safety Joint	2.00			4605.00	
Packer	5.00			4610.00	27.00 Bottom Of Top Packer
Packer	4.00			4614.00	
Stubb	1.00			4615.00	
Recorder	0.00	6752	Inside	4615.00	
Recorder	0.00	8322	Outside	4615.00	
Perforations	10.00			4625.00	
Change Over Sub	1.00			4626.00	
Drill Pipe	32.00			4658.00	
Change Over Sub	1.00			4659.00	
Bullnose	3.00			4662.00	48.00 Bottom Packers & Anchor

Total Tool Length: 75.00



**TRILOBITE
TESTING, INC**

DRILL STEM TEST REPORT

FLUID SUMMARY

Murfin Drilling Company

8-1S-37W Cheyenne,KS

250 N. Water STE 300
Wichita KS 67206

Jean #3-8

Job Ticket: 58259

DST#: 3

ATTN: Clayton Erickson

Test Start: 2014.06.18 @ 20:03:00

Mud and Cushion Information

Mud Type: Gel Chem

Cushion Type:

Oil API:

deg API

Mud Weight: 9.00 lb/gal

Cushion Length:

ft

Water Salinity:

26000 ppm

Viscosity: 78.00 sec/qt

Cushion Volume:

bbf

Water Loss: 5.59 in³

Gas Cushion Type:

Resistivity: ohm.m

Gas Cushion Pressure:

psig

Salinity: 1000.00 ppm

Filter Cake: 2.00 inches

Recovery Information

Recovery Table

Length ft	Description	Volume bbf
0.00	free oil in tool	0.000
370.00	MCW - 20%M - 80%W	1.820
186.00	MCW - 40%M - 60%W	0.915
24.00	MCW - 30%M - 70%W	0.337

Total Length: 580.00 ft Total Volume: 3.072 bbf

Num Fluid Samples: 0

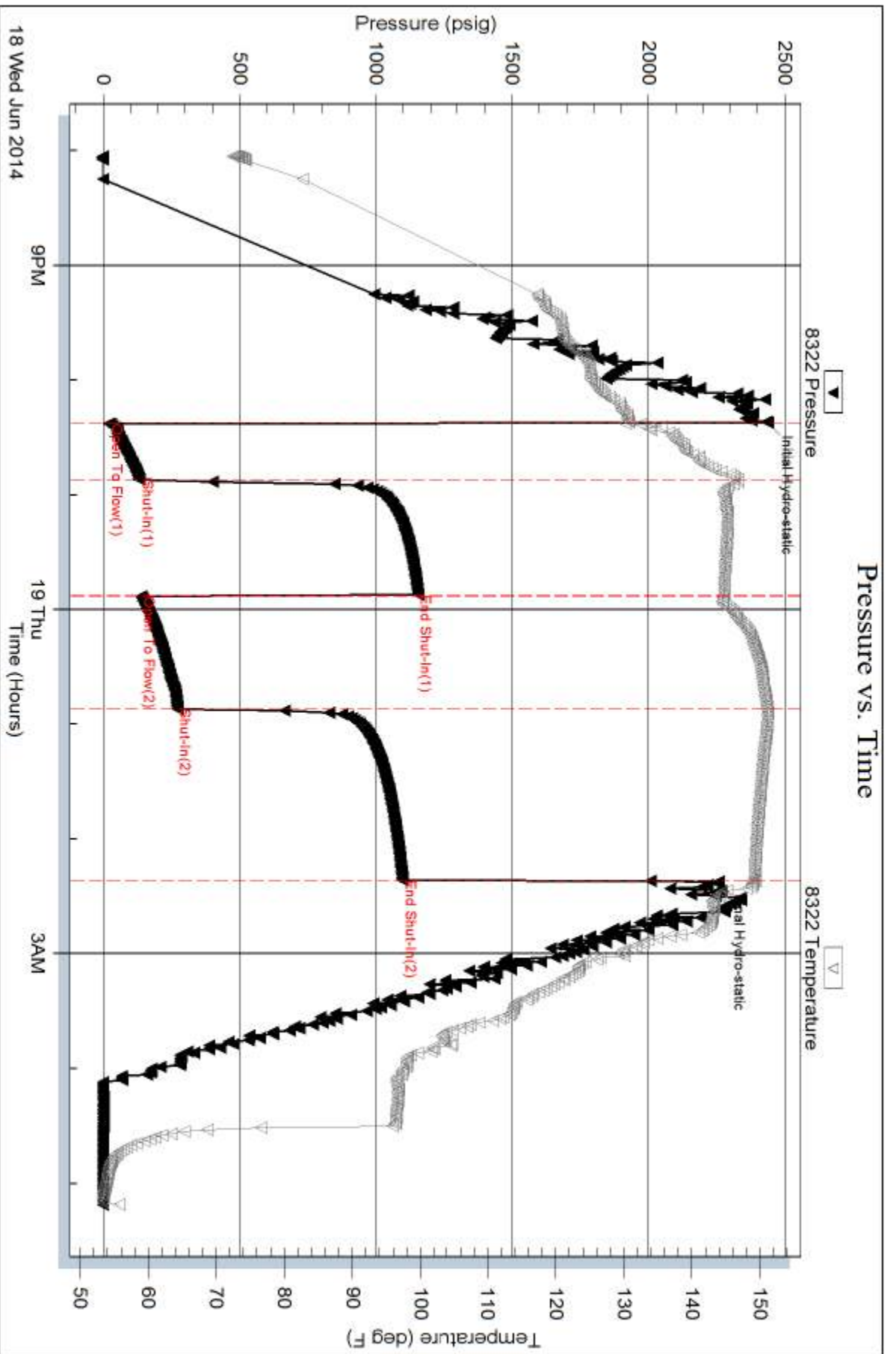
Num Gas Bombs: 0

Serial #:

Laboratory Name:

Laboratory Location:

Recovery Comments: RW = .318 @ 57 DEG F



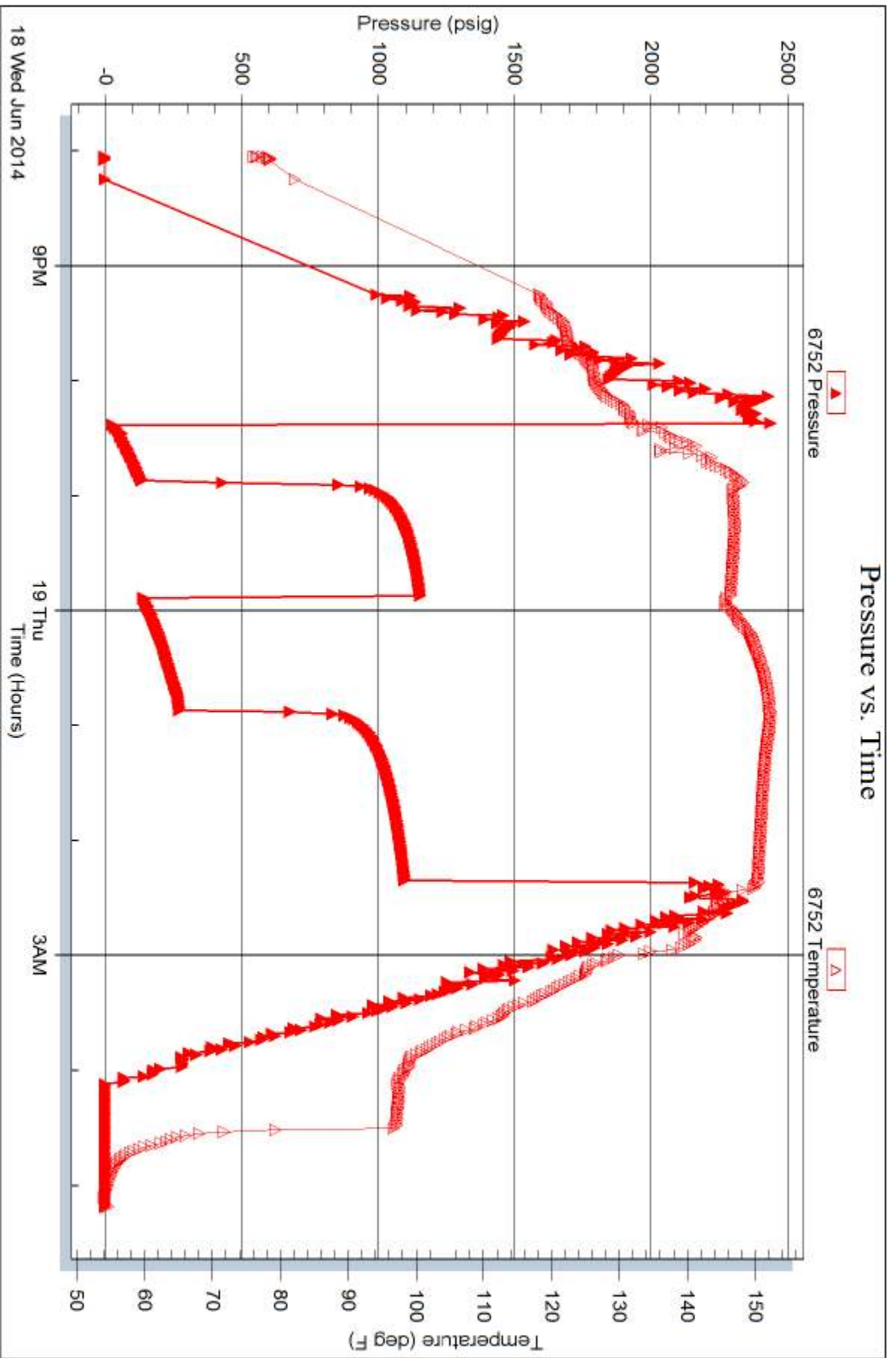
Serial #: 6752

Inside

Murfin Drilling Company

Jean #3-8

DST Test Number: 3



Trilobite Testing, Inc

Ref. No: 58259

Printed: 2014.06.24 @ 14:48:36



TRILOBITE TESTING INC.

1515 Commerce Parkway • Hays, Kansas 67601

Test Ticket

NO. 58257

Well Name & No. Jean #3-8 Test No. 1 Date 6/16/14
 Company Murfin Drilling Co. Elevation 3283 KB 3273 GL
 Address 250 N. Water STE 300 Wichita KS 67206
 Co. Rep / Geo. Clayton Erickson Rig Murfin #14
 Location: Sec. 8 Twp. 15 Rge. 37W Co. Cheyenne State KS

Interval Tested 4175 - 4310 Zone Tested Douglas Sand & 2KC "A-D"
 Anchor Length 135' Drill Pipe Run 3616' Mud Wt. 9.01
 Top Packer Depth 4170 Drill Collars Run 556' Vis 80
 Bottom Packer Depth 4175 Wt. Pipe Run 0 WL 6.8
 Total Depth 4310 Chlorides 800 ppm System LCM 8
 Blow Description IF - 1/2" blow built to 1 1/2"
ISI - No return
FF - Surface blow started @ 3 mins built to 1 1/2"
FSI - No return

Rec	Feet of	%gas	%oil	%water	%mud
<u>60</u>	<u>OWCM</u>	<u>20</u>	<u>40</u>	<u>40</u>	<u>40</u>
<u>90</u>	<u>OMCW</u>	<u>10</u>	<u>50</u>	<u>40</u>	<u>40</u>
<u>90</u>	<u>OMCW</u>	<u>10</u>	<u>50</u>	<u>40</u>	<u>40</u>
<u>90</u>	<u>OMCW</u>	<u>5</u>	<u>55</u>	<u>40</u>	<u>40</u>

Rec Total 330' BHT 1380 Gravity — API RW : 273 @ 76 °F Chlorides 23,000 ppm

(A) Initial Hydrostatic 2204 Test 1250 T-On Location 11:00
 (B) First Initial Flow 24 Jars 250 T-Started 11:34
 (C) First Final Flow 78 Safety Joint 75 T-Open 13:41
 (D) Initial Shut-In 1275 Circ Sub NC T-Pulled 17:41
 (E) Second Initial Flow 90 Hourly Standby _____ T-Out 19:54
 (F) Second Final Flow 173 Mileage 130 RT 201.50 Comments _____
 (G) Final Shut-In 1243 Sampler _____ Ruined Shale Packer _____
 (H) Final Hydrostatic 2054 Straddle _____ Ruined Packer _____
 Shale Packer _____ Extra Copies _____
 Extra Packer _____ Extra Recorder _____ Sub Total 0
 Extra Recorder _____ Total 1776.50
 Day Standby _____ MP/DST Disc't _____
 Accessibility _____ Sub Total 1776.50

Approved By _____

Our Representative [Signature]

Trilobite Testing Inc. shall not be liable for damaged of any kind of the property or personnel of the one for whom a test is made, or for any loss suffered or sustained, directly or indirectly, through the use of its equipment, or its statements or opinion concerning the results of any test, tools lost or damaged in the hole shall be paid for at cost by the party for whom the test is made.



TRILOBITE TESTING INC.

1515 Commerce Parkway • Hays, Kansas 67601

Test Ticket

NO. 58258

Well Name & No. Jean # 3-8 Test No. 2 Date 6/17/14
 Company Murfin Drilling Co. Elevation 3283 KB 3273 GL
 Address 250 N. Water STE 300 Wichita KS 67206
 Co. Rep / Geo. Clayton Erickson Rig Martin #14
 Location: Sec. 8 Twp. 15 Rge. 37W Co. Cheyenne State KS

Interval Tested 4307 - 4465 Zone Tested LKC "G-J"
 Anchor Length 158' Drill Pipe Run 3745' Mud Wt. 9.1
 Top Packer Depth 4302 Drill Collars Run 556' Vis 69
 Bottom Packer Depth 4307 Wt. Pipe Run 0' WL 6.0
 Total Depth 4465 Chlorides 800 ppm System LCM 8

Blow Description IF - 1/4" blow built to 3"
ISI - No return
FF - Surface blow started @ 20 mins built to 2"
FSE - No return

Rec	Feet of	%gas	%oil	%water	%mud
<u>10</u>	<u>OCM</u>	<u>50</u>	<u>50</u>	<u>50</u>	<u>50</u>
<u>90</u>	<u>OCM</u>	<u>30</u>	<u>70</u>	<u>70</u>	<u>70</u>
<u>90</u>	<u>OCM</u>	<u>5</u>	<u>95</u>	<u>95</u>	<u>95</u>
<u>90</u>	<u>OWCM</u>	<u>20</u>	<u>35</u>	<u>45</u>	<u>45</u>
Rec	Feet of	%gas	%oil	%water	%mud

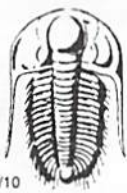
Rec Total 280' BHT 136° Gravity _____ API RW _____ @ _____ °F Chlorides _____ ppm

(A) Initial Hydrostatic 2192 Test 1250 T-On Location 15:00
 (B) First Initial Flow 22 Jars 250 T-Started 15:12
 (C) First Final Flow 79 Safety Joint 75 T-Open 17:51
 (D) Initial Shut-In 1330 Circ Sub NC T-Pulled 21:51
 (E) Second Initial Flow 85 Hourly Standby _____ T-Out 00:07
 (F) Second Final Flow 154 Mileage 130 RT 201.50
 (G) Final Shut-In 1291 Sampler _____
 (H) Final Hydrostatic 1977 Straddle _____
 Shale Packer _____
 Extra Packer _____
 Extra Recorder _____
 Day Standby _____
 Accessibility _____
 Sub Total 1776.50

Comments _____
 Ruined Shale Packer _____
 Ruined Packer _____
 Extra Copies _____
 Sub Total 0
 Total 1776.50
 MP/DST Disc't _____

Approved By _____ Our Representative [Signature]

Trilobite Testing Inc. shall not be liable for damaged of any kind of the property or personnel of the one for whom a test is made, or for any loss suffered or sustained, directly or indirectly, through the use of its equipment, or its statements or opinion concerning the results of any test, tools lost or damaged in the hole shall be paid for at cost by the party for whom the test is made.



TRILOBITE TESTING INC.

1515 Commerce Parkway • Hays, Kansas 67601

Test Ticket

NO. **58259**

Well Name & No. Jean # 3-8 Test No. 3 Date 6/18/14
 Company Murfin Drilling Co. Elevation 3283 KB 3273 GL
 Address 250 N. Water STE 300 Wichita KS 67206
 Co. Rep / Geo. Clayton Erickson Rig Murfin # 14
 Location: Sec. 8 Twp. 1S Rge. 37W Co. Cheyenne State KS

Interval Tested 4614 - 4662 Zone Tested Pawnee
 Anchor Length 48' Drill Pipe Run 4062' Mud Wt. 9.2
 Top Packer Depth 4609 Drill Collars Run 556' Vis 78
 Bottom Packer Depth 4614 Wt. Pipe Run 0' WL 5.6
 Total Depth 4662 Chlorides 1000 ppm System LCM 10
 Blow Description IF - 1/4" blow built to 5 1/2"
ISI - No return
FF - Surface blow started @ 16 mins built to 4"
FSI - No return

Rec	Feet of	%gas	%oil	%water	%mud
<u>24</u>	<u>MCW</u>		<u>70</u>	<u>30</u>	
<u>186</u>	<u>MCW</u>		<u>60</u>	<u>40</u>	
<u>370</u>	<u>MCW</u>		<u>80</u>	<u>20</u>	
<u>0'</u>	<u>free oil in tool</u>				

Rec Total 580 BHT — Gravity + API RW 318 @ 57° F Chlorides 26000 ppm

(A) Initial Hydrostatic <u>2433</u>	<input checked="" type="checkbox"/> Test <u>1250</u>	T-On Location <u>19:30</u>
(B) First Initial Flow <u>22</u>	<input checked="" type="checkbox"/> Jars <u>250</u>	T-Started <u>20:03</u>
(C) First Final Flow <u>134</u>	<input checked="" type="checkbox"/> Safety Joint <u>75</u>	T-Open <u>22:22</u>
(D) Initial Shut-In <u>1154</u>	<input checked="" type="checkbox"/> Circ Sub <u>NC</u>	T-Pulled <u>03:22</u>
(E) Second Initial Flow <u>139</u>	<input type="checkbox"/> Hourly Standby	T-Out <u>05:11</u>
(F) Second Final Flow <u>272</u>	<input checked="" type="checkbox"/> Mileage <u>130 RT</u> 201.50	Comments
(G) Final Shut-In <u>1097</u>	<input type="checkbox"/> Sampler	
(H) Final Hydrostatic <u>2257</u>	<input type="checkbox"/> Straddle	<input type="checkbox"/> Ruined Shale Packer
Initial Open <u>30</u>	<input type="checkbox"/> Shale Packer	<input type="checkbox"/> Ruined Packer
Initial Shut-In <u>60</u>	<input type="checkbox"/> Extra Packer	<input type="checkbox"/> Extra Copies
Final Flow <u>60</u>	<input type="checkbox"/> Extra Recorder	Sub Total <u>0</u>
Final Shut-In <u>90</u>	<input type="checkbox"/> Day Standby	Total <u>1776.50</u>
	<input type="checkbox"/> Accessibility	MP/DST Disc't
	Sub Total <u>1776.50</u>	

Approved By _____

Our Representative [Signature]

Trilobite Testing Inc. shall not be liable for damaged of any kind of the property or personnel of the one for whom a test is made, or for any loss suffered or sustained, directly or indirectly, through the use of its equipment, or its statements or opinion concerning the results of any test, tools lost or damaged in the hole shall be paid for at cost by the party for whom the test is made.