



TRILOBITE TESTING, INC.

DRILL STEM TEST REPORT

Berexco LLC

2 1s 36w Rawlins KS

2020 N Bramblewood
Wichita KS 67206

Schwerdt 2-2

Job Ticket: 58430

DST#: 1

ATTN: Bryan Bynog

Test Start: 2014.07.20 @ 10:40:00

GENERAL INFORMATION:

Formation: **LKC "A"**

Deviated: No Whipstock: ft (KB)

Time Tool Opened: 14:27:00

Time Test Ended: 20:13:30

Test Type: Conventional Bottom Hole (Initial)

Tester: Robert Zodrow

Unit No: 49

Interval: 3940.00 ft (KB) To 4040.00 ft (KB) (TVD)

Reference Elevations: 3051.00 ft (KB)

Total Depth: 4040.00 ft (KB) (TVD)

3040.00 ft (CF)

Hole Diameter: 7.88 inches Hole Condition: Fair

KB to GR/CF: 11.00 ft

Serial #: 6769 Outside

Press @ Run Depth: 27.82 psig @ 3941.00 ft (KB)

Capacity: 8000.00 psig

Start Date: 2014.07.20

End Date: 2014.07.20

Last Calib.: 2014.07.20

Start Time: 10:40:05

End Time: 20:13:30

Time On Btm: 2014.07.20 @ 14:26:30

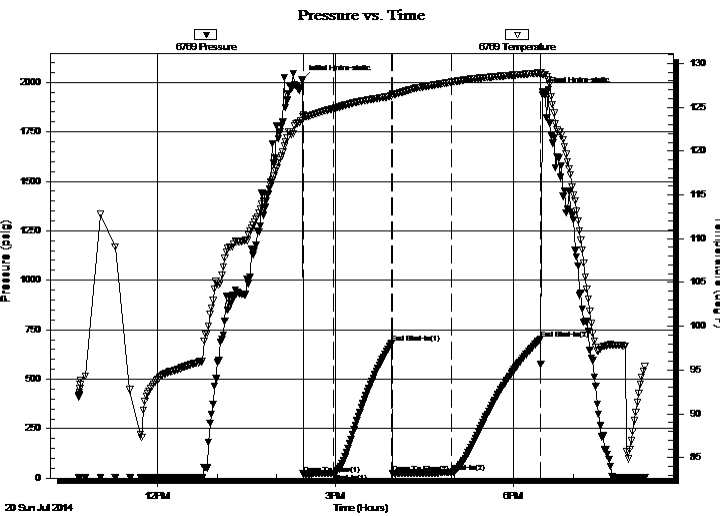
Time Off Btm: 2014.07.20 @ 18:29:30

TEST COMMENT: 30-IF- Surface blow died in 7 mins

60-ISI- No return

60-FF- No blow

90-FSI- No return



PRESSURE SUMMARY

Time (Min.)	Pressure (psig)	Temp (deg F)	Annotation
0	2012.78	123.48	Initial Hydro-static
1	20.90	123.92	Open To Flow (1)
31	23.76	124.85	Shut-In(1)
90	680.67	126.28	End Shut-In(1)
91	24.96	126.49	Open To Flow (2)
151	27.82	127.88	Shut-In(2)
241	702.39	128.92	End Shut-In(2)
243	1953.43	128.74	Final Hydro-static

Recovery

Length (ft)	Description	Volume (bbl)
2.00	mud 100%m	0.01

Gas Rates

Choke (inches)	Pressure (psig)	Gas Rate (Mcf/d)



**TRILOBITE
TESTING, INC.**

DRILL STEM TEST REPORT

FLUID SUMMARY

Berexco LLC

2 1s 36w Rawlins KS

2020 N Bramblewood
Wichita KS 67206

Schwerdt 2-2

Job Ticket: 58430

DST#: 1

ATTN: Bryan Bynog

Test Start: 2014.07.20 @ 10:40:00

Mud and Cushion Information

Mud Type: Gel Chem

Cushion Type:

Oil API:

deg API

Mud Weight: 9.00 lb/gal

Cushion Length:

ft

Water Salinity:

ppm

Viscosity: 65.00 sec/qt

Cushion Volume:

bbbl

Water Loss: 6.40 in³

Gas Cushion Type:

Resistivity: ohm.m

Gas Cushion Pressure:

psig

Salinity: 700.00 ppm

Filter Cake: 2.00 inches

Recovery Information

Recovery Table

Length ft	Description	Volume bbl
2.00	mud 100% _m	0.010

Total Length: 2.00 ft Total Volume: 0.010 bbl

Num Fluid Samples: 0

Num Gas Bombs: 0

Serial #:

Laboratory Name:

Laboratory Location:

Recovery Comments:

