



## DRILL STEM TEST REPORT

Prepared For: **American Warrior Inc**

PO Box 399  
Garden City, KS 67846

ATTN: Adam Folk

### **Tempero #6-23**

#### **23-17s-14w Barton,KS**

Start Date: 2014.08.03 @ 09:15:00

End Date: 2014.08.03 @ 15:38:00

Job Ticket #: 60251                      DST #: 1

Trilobite Testing, Inc  
1515 Commerce Parkway Hays, KS 67601  
ph: 785-625-4778 fax: 785-625-5620

Printed: 2014.08.07 @ 11:02:26



**TRILOBITE TESTING, INC**

# DRILL STEM TEST REPORT

American Warrior Inc  
 PO Box 399  
 Garden City, KS 67846  
 ATTN: Adam Folk

**23-17s-14w Barton,KS**

**Temporo #6-23**

Job Ticket: 60251      **DST#: 1**  
 Test Start: 2014.08.03 @ 09:15:00

## GENERAL INFORMATION:

Formation: **LKC B-D**  
 Deviated: No Whipstock:                      ft (KB)  
 Time Tool Opened: 11:25:00  
 Time Test Ended: 15:38:00  
 Interval: **3219.00 ft (KB) To 3250.00 ft (KB) (TVD)**  
 Total Depth: 3250.00 ft (KB) (TVD)  
 Hole Diameter: 7.80 inches Hole Condition: Fair  
 Test Type: Conventional Bottom Hole (Initial)  
 Tester: Ken Swinney  
 Unit No: S1 Hays/98  
 Reference Elevations: 1915.00 ft (KB)  
 1907.00 ft (CF)  
 KB to GR/CF: 8.00 ft

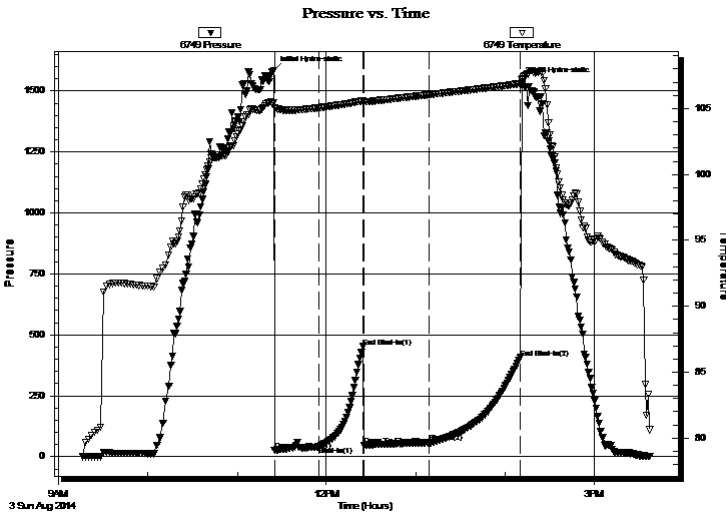
## Serial #: 6749

Inside

Press@RunDepth: 57.52 psig @ 3246.00 ft (KB)      Capacity: 5000.00 psig  
 Start Date: 2014.08.03      End Date: 2014.08.03      Last Calib.: 2014.08.03  
 Start Time: 09:16:00      End Time: 15:38:00      Time On Btm: 2014.08.03 @ 11:24:30  
 Time Off Btm: 2014.08.03 @ 14:12:00

TEST COMMENT: IFP - 30 - Weak blow /Blow built to 2 1/2 inches  
 ISI - 30 - No blow back  
 FFP - 45 - Fair blow /Blow built to 10 inches  
 FSI - 60 -Slight surface blow back

## PRESSURE SUMMARY



Time (Min.)	Pressure (psig)	Temp (deg F)	Annotation
0	1584.65	105.42	Initial Hydro-static
1	26.27	105.07	Open To Flow (1)
31	41.34	105.06	Shut-In(1)
60	451.14	105.59	End Shut-In(1)
61	47.40	105.51	Open To Flow (2)
105	57.52	106.04	Shut-In(2)
166	406.47	106.89	End Shut-In(2)
168	1538.94	107.28	Final Hydro-static

## Recovery

Length (ft)	Description	Volume (bbl)
0.00	110 feet of gas in pipe	0.00
60.00	Oil cut Mud/Oil 5% Mud 95%	0.84
10.00	Muddy Oil/Mud 40% Oil 60%	0.14

## Gas Rates

	Choke (inches)	Pressure (psig)	Gas Rate (Mcf/d)



**TRILOBITE  
TESTING, INC**

# DRILL STEM TEST REPORT

American Warrior Inc  
PO Box 399  
Garden City, KS 67846  
ATTN: Adam Folk

**23-17s-14w Barton,KS**

**Tempero #6-23**

Job Ticket: 60251      **DST#: 1**  
Test Start: 2014.08.03 @ 09:15:00

## GENERAL INFORMATION:

Formation: **LKC B-D**  
Deviated: No Whipstock:      ft (KB)  
Time Tool Opened: 11:25:00  
Time Test Ended: 15:38:00  
Interval: **3219.00 ft (KB) To 3250.00 ft (KB) (TVD)**  
Total Depth: 3250.00 ft (KB) (TVD)  
Hole Diameter: 7.80 inches Hole Condition: Fair  
Test Type: Conventional Bottom Hole (Initial)  
Tester: Ken Swinney  
Unit No: S1 Hays/98  
Reference Elevations: 1915.00 ft (KB)  
1907.00 ft (CF)  
KB to GR/CF: 8.00 ft

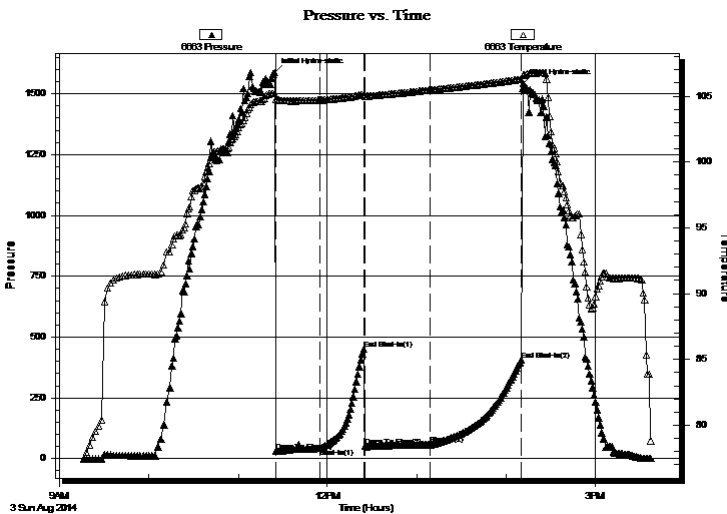
## Serial #: 6663

**Outside**

Press@RunDepth: 406.58 psig @ 3247.00 ft (KB)      Capacity: 5000.00 psig  
Start Date: 2014.08.03      End Date: 2014.08.03      Last Calib.: 2014.08.03  
Start Time: 09:16:00      End Time: 15:38:00      Time On Btm: 2014.08.03 @ 11:24:30  
Time Off Btm: 2014.08.03 @ 14:12:00

TEST COMMENT: IFP - 30 - Weak blow/Blow built to 2 1/2 inches  
ISI - 30 - No blow back  
FFP - 45 - Fair blow/Blow built to 10 inches  
FSI - 60 -Slight surface blow back

## PRESSURE SUMMARY



Time (Min.)	Pressure (psig)	Temp (deg F)	Annotation
0	1585.74	105.21	Initial Hydro-static
1	29.25	104.77	Open To Flow (1)
31	42.93	104.70	Shut-In(1)
60	451.80	105.13	End Shut-In(1)
61	49.56	105.01	Open To Flow (2)
105	59.51	105.45	Shut-In(2)
167	406.58	106.28	End Shut-In(2)
168	1540.59	106.60	Final Hydro-static

## Recovery

Length (ft)	Description	Volume (bbl)
0.00	110 feet of gas in pipe	0.00
60.00	Oil cut Mud/Oil 5% Mud 95%	0.84
10.00	Muddy Oil/Mud 40% Oil 60%	0.14

## Gas Rates

	Choke (inches)	Pressure (psig)	Gas Rate (Mcf/d)



**TRILOBITE  
TESTING, INC**

# DRILL STEM TEST REPORT

**TOOL DIAGRAM**

American Warrior Inc  
PO Box 399  
Garden City, KS 67846  
ATTN: Adam Folk

**23-17s-14w Barton,KS**  
**Tempero #6-23**  
Job Ticket: 60251      **DST#: 1**  
Test Start: 2014.08.03 @ 09:15:00

**Tool Information**

Drill Pipe:	Length: 3222.00 ft	Diameter: 3.80 inches	Volume: 45.20 bbl	Tool Weight:	2000.00 lb
Heavy Wt. Pipe:	Length: 0.00 ft	Diameter: 0.00 inches	Volume: 0.00 bbl	Weight set on Packer:	20000.00 lb
Drill Collar:	Length: 0.00 ft	Diameter: 0.00 inches	Volume: 0.00 bbl	Weight to Pull Loose:	34000.00 lb
			<u>Total Volume: 45.20 bbl</u>	Tool Chased	0.00 ft
Drill Pipe Above KB:	23.00 ft			String Weight: Initial	24000.00 lb
Depth to Top Packer:	3219.00 ft			Final	24000.00 lb
Depth to Bottom Packer:	ft				
Interval between Packers:	31.00 ft				
Tool Length:	51.00 ft				
Number of Packers:	2	Diameter: 6.75 inches			

Tool Comments: Ruined Packer

<b>Tool Description</b>	<b>Length (ft)</b>	<b>Serial No.</b>	<b>Position</b>	<b>Depth (ft)</b>	<b>Accum. Lengths</b>
-------------------------	--------------------	-------------------	-----------------	-------------------	-----------------------

Shut-In Tool	5.00			3204.00	
Hydraulic tool	5.00			3209.00	
Top Packer	5.00			3214.00	
Packer	5.00			3219.00	20.00      Bottom Of Top Packer
Anchor	26.00			3245.00	
Recorder	1.00	6749	Inside	3246.00	
Recorder	1.00	6663	Outside	3247.00	
Bullnose	3.00			3250.00	31.00      Anchor Tool

**Total Tool Length: 51.00**



**TRILOBITE  
TESTING, INC**

# DRILL STEM TEST REPORT

## FLUID SUMMARY

American Warrior Inc  
PO Box 399  
Garden City, KS 67846  
ATTN: Adam Folk

**23-17s-14w Barton,KS**  
**Tempero #6-23**  
Job Ticket: 60251      **DST#: 1**  
Test Start: 2014.08.03 @ 09:15:00

### Mud and Cushion Information

Mud Type: Gel Chem	Cushion Type:	Oil API:	deg API
Mud Weight: 9.00 lb/gal	Cushion Length: ft	Water Salinity:	ppm
Viscosity: 59.00 sec/qt	Cushion Volume: bbl		
Water Loss: 10.38 in <sup>3</sup>	Gas Cushion Type:		
Resistivity: ohm.m	Gas Cushion Pressure: psig		
Salinity: 9000.00 ppm			
Filter Cake: 2.00 inches			

### Recovery Information

Recovery Table

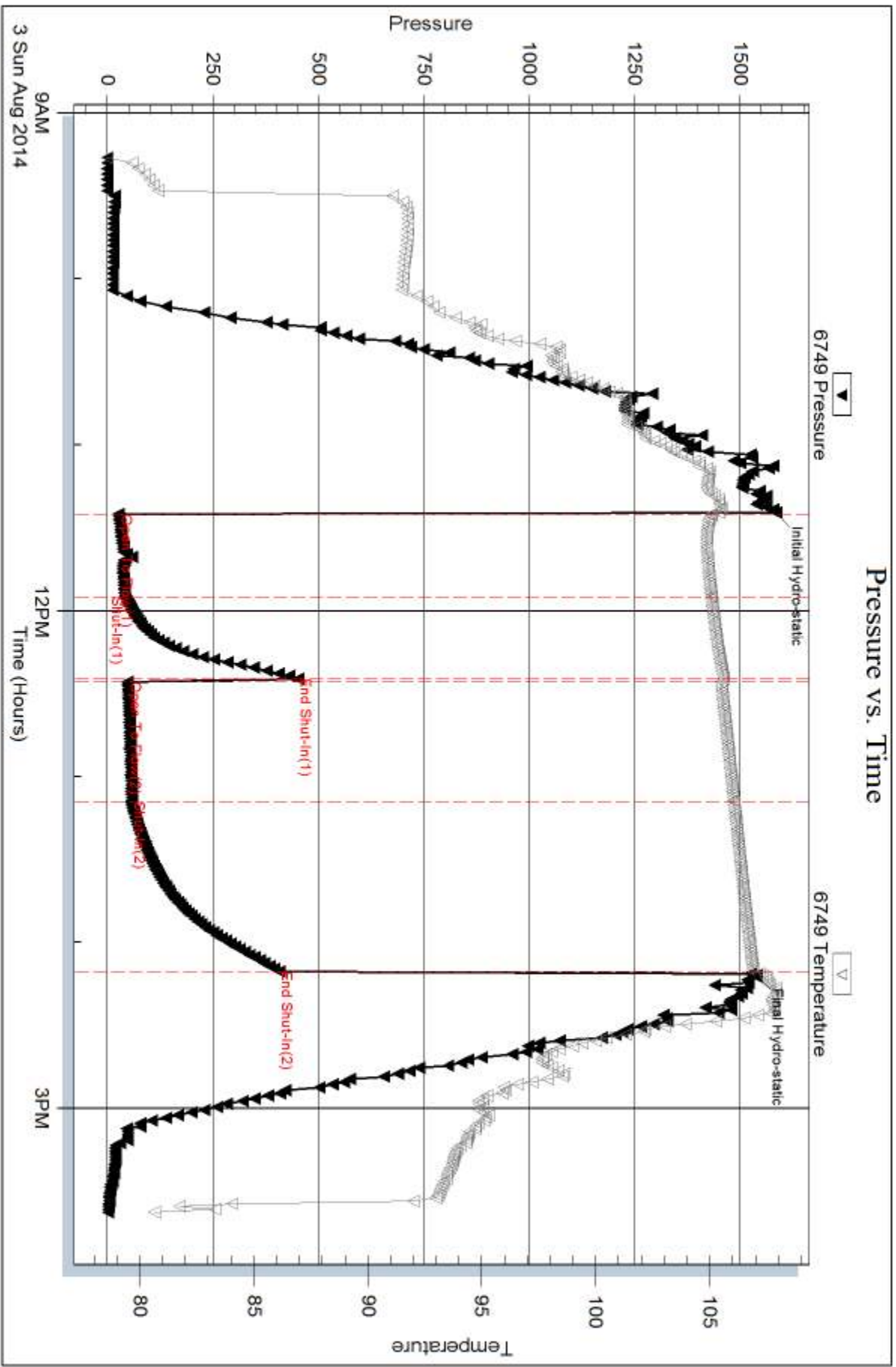
Length ft	Description	Volume bbl
0.00	110 feet of gas in pipe	0.000
60.00	Oil cut Mud/Oil 5% Mud 95%	0.842
10.00	Muddy Oil/Mud 40% Oil 60%	0.140

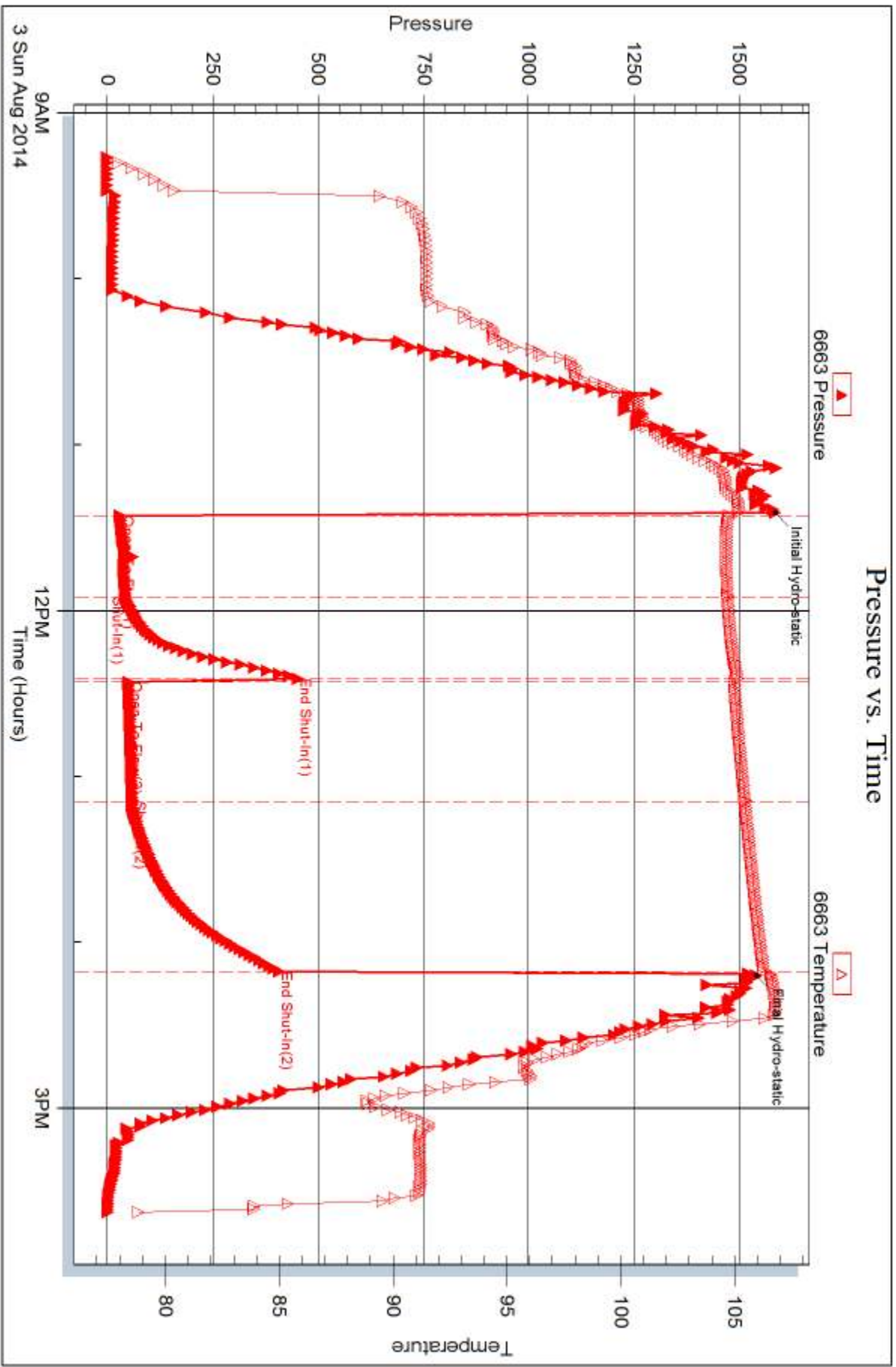
Total Length: 70.00 ft      Total Volume: 0.982 bbl

Num Fluid Samples: 0      Num Gas Bombs: 0      Serial #:

Laboratory Name:      Laboratory Location:

Recovery Comments:







## DRILL STEM TEST REPORT

Prepared For: **American Warrior Inc**

PO Box 399  
Garden City, KS 67846

ATTN: Adam Folk

### **Tempero #6-23**

#### **23-17s-14w Barton,KS**

Start Date: 2014.08.04 @ 04:37:00

End Date: 2014.08.04 @ 09:43:00

Job Ticket #: 60252                      DST #: 2

Trilobite Testing, Inc  
1515 Commerce Parkway Hays, KS 67601  
ph: 785-625-4778 fax: 785-625-5620

Printed: 2014.08.07 @ 11:02:02





**TRILOBITE TESTING, INC**

# DRILL STEM TEST REPORT

American Warrior Inc  
 PO Box 399  
 Garden City, KS 67846  
 ATTN: Adam Folk

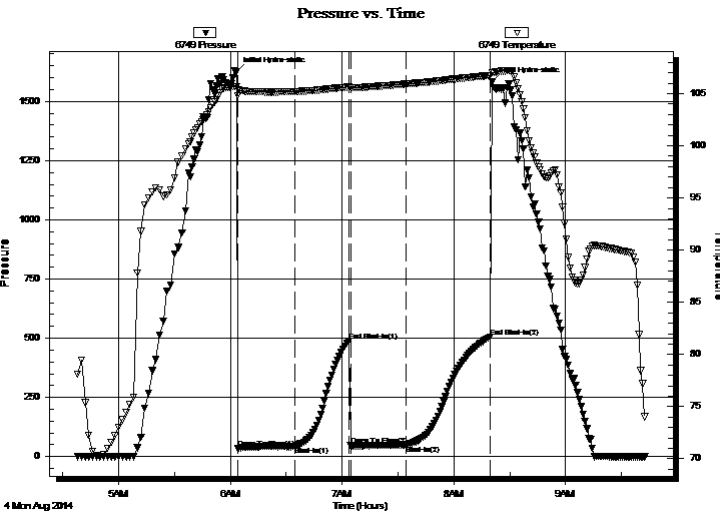
**23-17s-14w Barton,KS**  
**Tempero #6-23**  
 Job Ticket: 60252 **DST#: 2**  
 Test Start: 2014.08.04 @ 04:37:00

## GENERAL INFORMATION:

Formation: **LKC J&K**  
 Deviated: No Whipstock: ft (KB)  
 Time Tool Opened: 06:04:00  
 Time Test Ended: 09:43:00  
 Interval: **3279.00 ft (KB) To 3330.00 ft (KB) (TVD)**  
 Total Depth: 3330.00 ft (KB) (TVD)  
 Hole Diameter: 7.80 inches Hole Condition: Poor  
 Test Type: Conventional Bottom Hole (Initial)  
 Tester: Ken Swinney  
 Unit No: S1  
 Reference Elevations: 1915.00 ft (KB)  
 1907.00 ft (CF)  
 KB to GR/CF: 8.00 ft

**Serial #: 6749 Inside**  
 Press@RunDepth: 49.93 psig @ 3326.00 ft (KB) Capacity: 5000.00 psig  
 Start Date: 2014.08.04 End Date: 2014.08.04 Last Calib.: 2014.08.04  
 Start Time: 04:38:00 End Time: 09:43:00 Time On Btm: 2014.08.04 @ 06:03:30  
 Time Off Btm: 2014.08.04 @ 08:20:30

**TEST COMMENT:** IFP - 30 - Weak blow /Blow built to 1 1/2 inches  
 ISI - 30 - No blow back  
 FFP - 30 - Very weak blow /Blow built to 1/4 inch  
 FSI - 45 - No blow back



## PRESSURE SUMMARY

Time (Min.)	Pressure (psig)	Temp (deg F)	Annotation
0	1626.85	105.70	Initial Hydro-static
1	36.47	104.82	Open To Flow (1)
31	44.31	105.20	Shut-In(1)
60	489.22	105.64	End Shut-In(1)
61	46.00	105.56	Open To Flow (2)
91	49.93	105.92	Shut-In(2)
136	506.07	106.73	End Shut-In(2)
137	1581.67	107.00	Final Hydro-static

## Recovery

Length (ft)	Description	Volume (bbl)
30.00	Mud w with show of oil/Mud 100%	0.42

## Gas Rates

Choke (inches)	Pressure (psig)	Gas Rate (Mcf/d)



**TRILOBITE TESTING, INC**

# DRILL STEM TEST REPORT

American Warrior Inc  
 PO Box 399  
 Garden City, KS 67846  
 ATTN: Adam Folk

**23-17s-14w Barton,KS**

**Temporo #6-23**

Job Ticket: 60252 **DST#: 2**

Test Start: 2014.08.04 @ 04:37:00

## GENERAL INFORMATION:

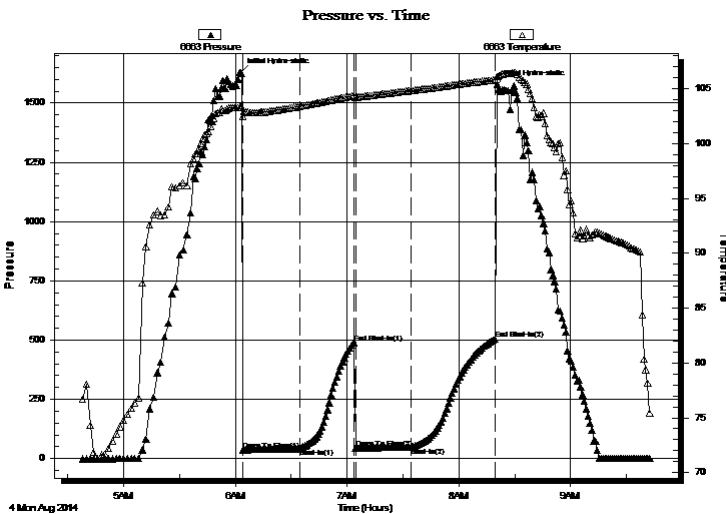
Formation: **LKC J&K**  
 Deviated: No Whipstock: ft (KB)  
 Time Tool Opened: 06:04:00  
 Time Test Ended: 09:43:00  
 Interval: **3279.00 ft (KB) To 3330.00 ft (KB) (TVD)**  
 Total Depth: 3330.00 ft (KB) (TVD)  
 Hole Diameter: 7.80 inches Hole Condition: Poor  
 Test Type: Conventional Bottom Hole (Initial)  
 Tester: Ken Swinney  
 Unit No: S1  
 Reference Elevations: 1915.00 ft (KB)  
 1907.00 ft (CF)  
 KB to GR/CF: 8.00 ft

**Serial #: 6663 Outside**

Press@RunDepth: 504.87 psig @ 3327.00 ft (KB) Capacity: 5000.00 psig  
 Start Date: 2014.08.04 End Date: 2014.08.04 Last Calib.: 2014.08.04  
 Start Time: 04:38:00 End Time: 09:43:00 Time On Btm: 2014.08.04 @ 06:03:00  
 Time Off Btm: 2014.08.04 @ 08:20:30

TEST COMMENT: IFP - 30 - Weak blow /Blow built to 1 1/2 inches  
 ISI - 30 - No blow back  
 FFP - 30 - Very weak blow /Blow built to 1/4 inch  
 FSI - 45 - No blow back

## PRESSURE SUMMARY



Time (Min.)	Pressure (psig)	Temp (deg F)	Annotation
0	1628.67	103.33	Initial Hydro-static
1	36.67	102.49	Open To Flow (1)
32	44.10	103.40	Shut-In(1)
61	489.24	104.36	End Shut-In(1)
62	44.90	104.25	Open To Flow (2)
92	48.71	104.83	Shut-In(2)
137	504.87	105.80	End Shut-In(2)
138	1580.34	106.11	Final Hydro-static

## Recovery

Length (ft)	Description	Volume (bbl)
30.00	Mud w with show of oil/Mud 100%	0.42

## Gas Rates

	Choke (inches)	Pressure (psig)	Gas Rate (Mcf/d)



**TRILOBITE  
TESTING, INC**

# DRILL STEM TEST REPORT

**TOOL DIAGRAM**

American Warrior Inc  
PO Box 399  
Garden City, KS 67846  
ATTN: Adam Folk

**23-17s-14w Barton,KS**  
**Tempero #6-23**  
Job Ticket: 60252      **DST#: 2**  
Test Start: 2014.08.04 @ 04:37:00

**Tool Information**

Drill Pipe:	Length: 3286.00 ft	Diameter: 3.80 inches	Volume: 46.09 bbl	Tool Weight:	2000.00 lb
Heavy Wt. Pipe:	Length: 0.00 ft	Diameter: 0.00 inches	Volume: 0.00 bbl	Weight set on Packer:	20000.00 lb
Drill Collar:	Length: 0.00 ft	Diameter: 0.00 inches	Volume: 0.00 bbl	Weight to Pull Loose:	26000.00 lb
			<u>Total Volume: 46.09 bbl</u>	Tool Chased	0.00 ft
Drill Pipe Above KB:	27.00 ft			String Weight: Initial	20000.00 lb
Depth to Top Packer:	3279.00 ft			Final	20000.00 lb
Depth to Bottom Packer:	ft				
Interval between Packers:	51.00 ft				
Tool Length:	71.00 ft				
Number of Packers:	2	Diameter: 6.75 inches			

Tool Comments:

<b>Tool Description</b>	<b>Length (ft)</b>	<b>Serial No.</b>	<b>Position</b>	<b>Depth (ft)</b>	<b>Accum. Lengths</b>
-------------------------	--------------------	-------------------	-----------------	-------------------	-----------------------

Shut-In Tool	5.00			3264.00	
Hydraulic tool	5.00			3269.00	
Top Packer	5.00			3274.00	
Packer	5.00			3279.00	20.00      Bottom Of Top Packer
Anchor	46.00			3325.00	
Recorder	1.00	6749	Inside	3326.00	
Recorder	1.00	6663	Outside	3327.00	
Bullnose	3.00			3330.00	51.00      Anchor Tool

**Total Tool Length: 71.00**



**TRILOBITE  
TESTING, INC**

# DRILL STEM TEST REPORT

**FLUID SUMMARY**

American Warrior Inc  
PO Box 399  
Garden City, KS 67846  
ATTN: Adam Folk

**23-17s-14w Barton,KS**  
**Tempero #6-23**  
Job Ticket: 60252      **DST#: 2**  
Test Start: 2014.08.04 @ 04:37:00

## Mud and Cushion Information

Mud Type: Gel Chem	Cushion Type:	Oil API:	deg API
Mud Weight: 9.00 lb/gal	Cushion Length: ft	Water Salinity:	ppm
Viscosity: 59.00 sec/qt	Cushion Volume: bbl		
Water Loss: 10.38 in <sup>3</sup>	Gas Cushion Type:		
Resistivity: ohm.m	Gas Cushion Pressure: psig		
Salinity: 9000.00 ppm			
Filter Cake: 2.00 inches			

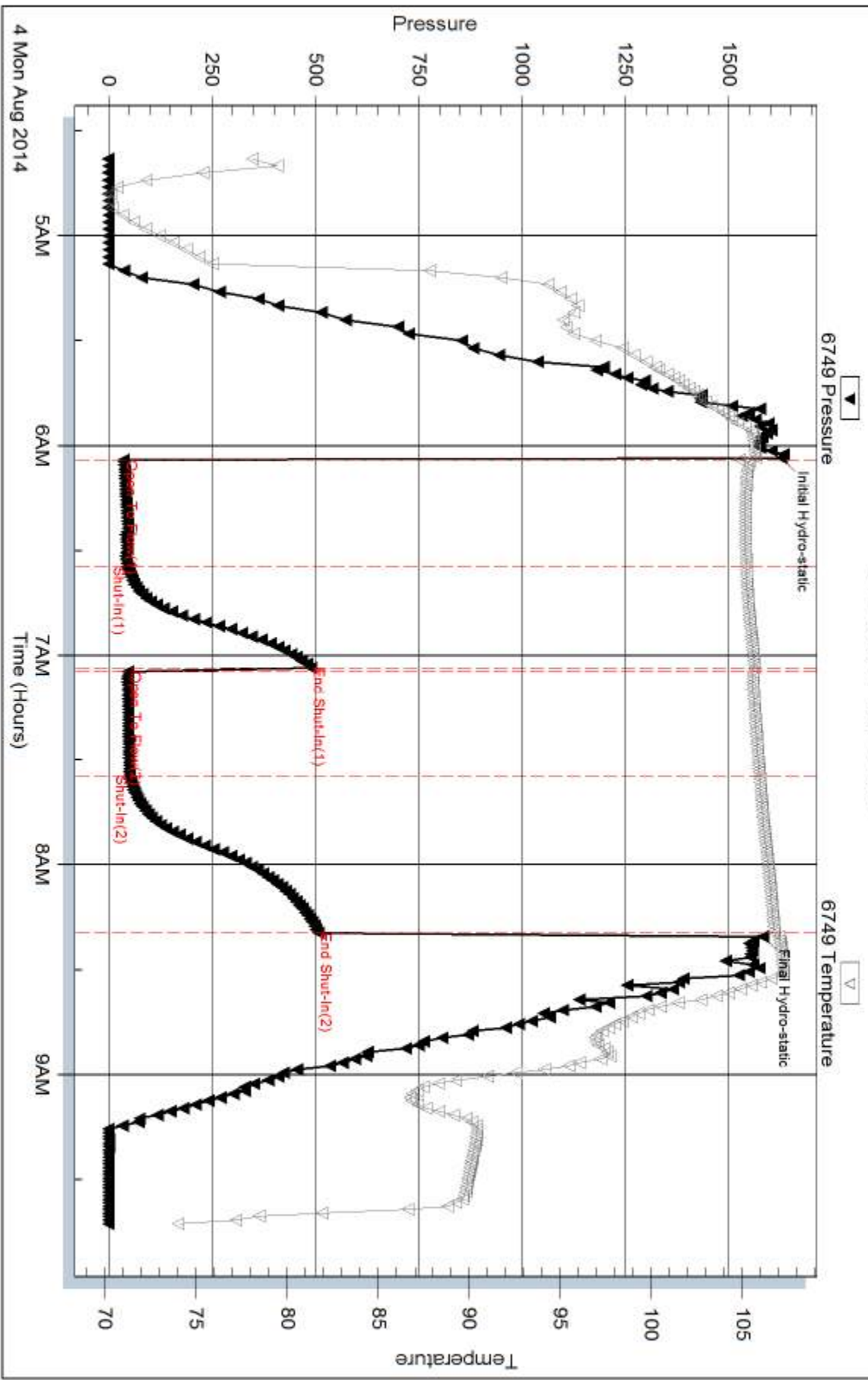
## Recovery Information

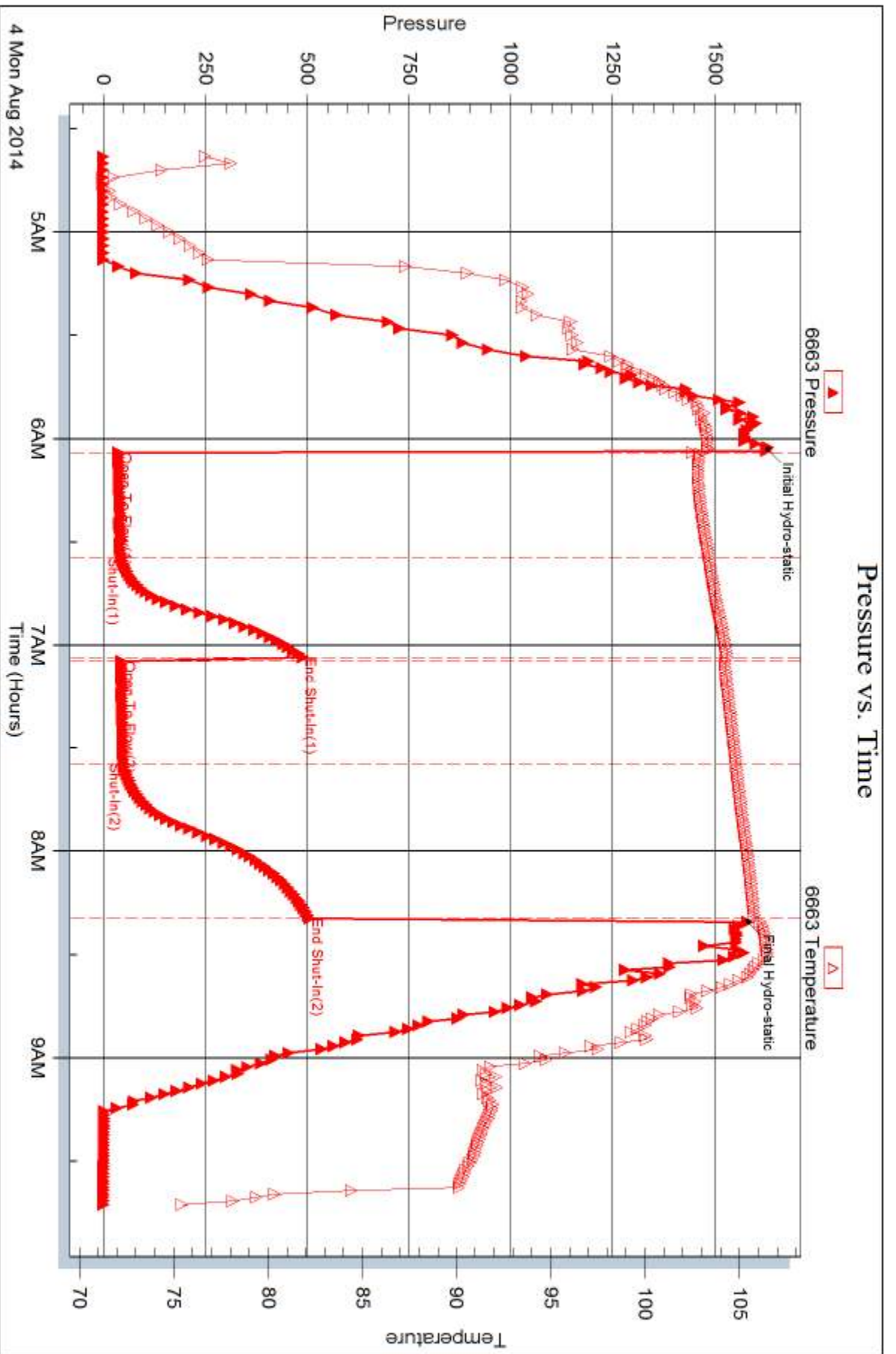
Recovery Table

Length ft	Description	Volume bbl
30.00	Mud with show of oil/Mud 100%	0.421

Total Length: 30.00 ft      Total Volume: 0.421 bbl  
Num Fluid Samples: 0      Num Gas Bombs: 0      Serial #:  
Laboratory Name:      Laboratory Location:  
Recovery Comments:

### Pressure vs. Time







## DRILL STEM TEST REPORT

Prepared For: **American Warrior Inc**

PO Box 399  
Garden City, KS 67846

ATTN: Adam Folk

### **Tempero #6-23**

#### **23-17s-14w Barton,KS**

Start Date: 2014.08.04 @ 23:08:00

End Date: 2014.08.05 @ 05:25:30

Job Ticket #: 60253                      DST #: 3

Trilobite Testing, Inc  
1515 Commerce Parkway Hays, KS 67601  
ph: 785-625-4778 fax: 785-625-5620

Printed: 2014.08.07 @ 11:01:19



**TRILOBITE TESTING, INC**

# DRILL STEM TEST REPORT

American Warrior Inc  
 PO Box 399  
 Garden City, KS 67846  
 ATTN: Adam Folk

**23-17s-14w Barton,KS**

**Tempero #6-23**

Job Ticket: 60253 **DST#: 3**  
 Test Start: 2014.08.04 @ 23:08:00

## GENERAL INFORMATION:

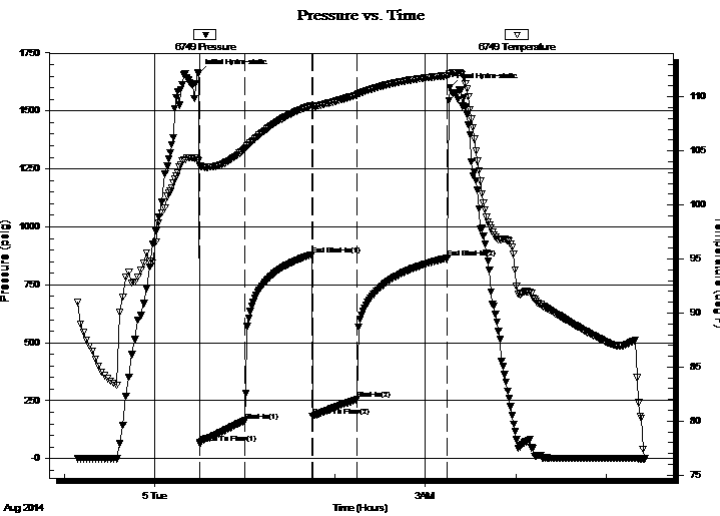
Formation: **BKC - Arbuckle**  
 Deviated: No Whipstock: ft (KB)  
 Time Tool Opened: 00:30:00  
 Time Test Ended: 05:25:30  
 Interval: **3348.00 ft (KB) To 3399.00 ft (KB) (TVD)**  
 Total Depth: 3399.00 ft (KB) (TVD)  
 Hole Diameter: 7.80 inches Hole Condition: Poor  
 Test Type: Conventional Bottom Hole (Initial)  
 Tester: Ken Swinney  
 Unit No: S1 Hays/98  
 Reference Elevations: 1915.00 ft (KB)  
 1907.00 ft (CF)  
 KB to GR/CF: 8.00 ft

## Serial #: 6749

Inside

Press@RunDepth: 255.45 psig @ 3395.00 ft (KB) Capacity: 5000.00 psig  
 Start Date: 2014.08.04 End Date: 2014.08.05 Last Calib.: 2014.08.05  
 Start Time: 23:09:00 End Time: 05:25:30 Time On Btm: 2014.08.05 @ 00:29:30  
 Time Off Btm: 2014.08.05 @ 03:16:30

TEST COMMENT: IFP - 30 Good blow /Blow built to bottom of bucket in 3 minutes 45 seconds  
 ISI - 45 Blow back built to 2 1/2 inches  
 FFP - 30 Good blow /Blow built to bottom of bucket in 7 minutes  
 FSI - 60 Blow back built to 1/2 inch



## PRESSURE SUMMARY

Time (Min.)	Pressure (psig)	Temp (deg F)	Annotation
0	1661.57	104.06	Initial Hydro-static
1	65.74	103.64	Open To Flow (1)
31	163.69	105.17	Shut-In(1)
75	880.04	109.21	End Shut-In(1)
76	182.52	109.07	Open To Flow (2)
105	255.45	110.17	Shut-In(2)
165	865.57	111.96	End Shut-In(2)
167	1601.67	112.18	Final Hydro-static

## Recovery

Length (ft)	Description	Volume (bbl)
0.00	201 feet of gas in pipe/100% gas	0.00
248.00	Oil cut Gassy Mud/Oil 5% Gas 10% Mud	3.48
419.00	Clean gassy Oil/Gas 10% Oil 90%	5.88
0.00	Corrected gravity of oil 40	0.00

## Gas Rates

	Choke (inches)	Pressure (psig)	Gas Rate (Mcf/d)





**TRILOBITE TESTING, INC.**

# DRILL STEM TEST REPORT

American Warrior Inc  
 PO Box 399  
 Garden City, KS 67846  
 ATTN: Adam Folk

**23-17s-14w Barton, KS**

**Temporo #6-23**

Job Ticket: 60253

**DST#: 3**

Test Start: 2014.08.04 @ 23:08:00

## GENERAL INFORMATION:

Formation: **BKC - Arbuckle**  
 Deviated: No Whipstock: ft (KB)  
 Time Tool Opened: 00:30:00  
 Time Test Ended: 05:25:30  
 Interval: **3348.00 ft (KB) To 3399.00 ft (KB) (TVD)**  
 Total Depth: 3399.00 ft (KB) (TVD)  
 Hole Diameter: 7.80 inches Hole Condition: Poor  
 Test Type: Conventional Bottom Hole (Initial)  
 Tester: Ken Swinney  
 Unit No: S1 Hays/98  
 Reference Elevations: 1915.00 ft (KB)  
 1907.00 ft (CF)  
 KB to GR/CF: 8.00 ft

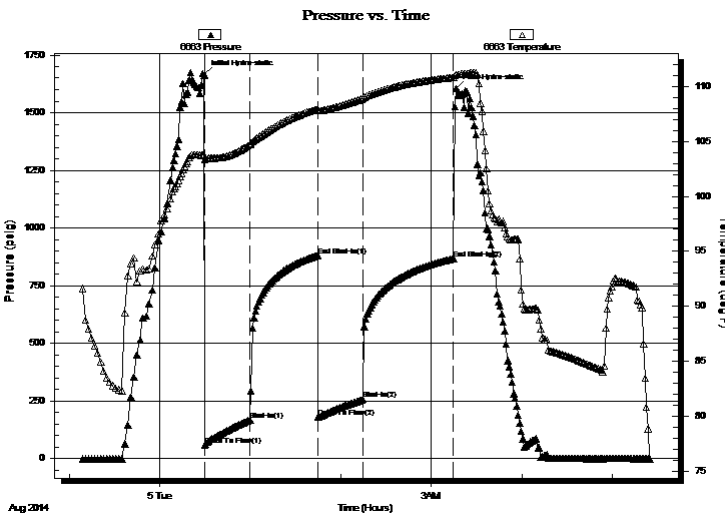
**Serial #: 6663**

**Outside**

Press@RunDepth: 867.54 psig @ 3396.00 ft (KB) Capacity: 5000.00 psig  
 Start Date: 2014.08.04 End Date: 2014.08.05 Last Calib.: 2014.08.05  
 Start Time: 23:09:00 End Time: 05:25:00 Time On Btm: 2014.08.05 @ 00:29:30  
 Time Off Btm: 2014.08.05 @ 03:16:30

TEST COMMENT: IFP - 30 Good blow /Blow built to bottom of bucket in 3 minutes 45 seconds  
 ISI - 45 Blow back built to 2 1/2 inches  
 FFP - 30 Good blow /Blow built to bottom of bucket in 7 minutes  
 FSI - 60 Blow back built to 1/2 inch

## PRESSURE SUMMARY



Time (Min.)	Pressure (psig)	Temp (deg F)	Annotation
0	1663.63	103.75	Initial Hydro-static
1	59.64	103.36	Open To Flow (1)
31	168.16	104.74	Shut-In(1)
75	881.46	107.95	End Shut-In(1)
76	178.67	107.79	Open To Flow (2)
105	259.06	108.89	Shut-In(2)
165	867.54	110.83	End Shut-In(2)
167	1603.48	111.07	Final Hydro-static

## Recovery

Length (ft)	Description	Volume (bbl)
0.00	201 feet of gas in pipe/100% gas	0.00
248.00	Oil cut Gassy Mud/Oil 5% Gas 10% Mud	3.48
419.00	Clean gassy Oil/Gas 10% Oil 90%	5.88
0.00	Corrected gravity of oil 40	0.00

## Gas Rates

	Choke (inches)	Pressure (psig)	Gas Rate (Mcf/d)



**TRILOBITE  
TESTING, INC**

# DRILL STEM TEST REPORT

**TOOL DIAGRAM**

American Warrior Inc  
 PO Box 399  
 Garden City, KS 67846  
 ATTN: Adam Folk

**23-17s-14w Barton,KS**  
**Tempero #6-23**  
 Job Ticket: 60253 **DST#: 3**  
 Test Start: 2014.08.04 @ 23:08:00

**Tool Information**

Drill Pipe:	Length: 3348.00 ft	Diameter: 3.80 inches	Volume: 46.96 bbl	Tool Weight:	2000.00 lb
Heavy Wt. Pipe:	Length: 0.00 ft	Diameter: 0.00 inches	Volume: 0.00 bbl	Weight set on Packer:	20000.00 lb
Drill Collar:	Length: 0.00 ft	Diameter: 0.00 inches	Volume: 0.00 bbl	Weight to Pull Loose:	28000.00 lb
			<u>Total Volume: 46.96 bbl</u>	Tool Chased	0.00 ft
Drill Pipe Above KB:	20.00 ft			String Weight: Initial	20000.00 lb
Depth to Top Packer:	3348.00 ft			Final	22000.00 lb
Depth to Bottom Packer:	ft				
Interval between Packers:	51.00 ft				
Tool Length:	71.00 ft				
Number of Packers:	2	Diameter: 6.75 inches			

Tool Comments:

Tool Description	Length (ft)	Serial No.	Position	Depth (ft)	Accum. Lengths
Shut-In Tool	5.00			3333.00	
Hydraulic tool	5.00			3338.00	
Top Packer	5.00			3343.00	
Packer	5.00			3348.00	20.00 Bottom Of Top Packer
Anchor	46.00			3394.00	
Recorder	1.00	6749	Inside	3395.00	
Recorder	1.00	6663	Outside	3396.00	
Bullnose	3.00			3399.00	51.00 Anchor Tool

**Total Tool Length: 71.00**



**TRILOBITE  
TESTING, INC**

# DRILL STEM TEST REPORT

**FLUID SUMMARY**

American Warrior Inc  
PO Box 399  
Garden City, KS 67846  
ATTN: Adam Folk

**23-17s-14w Barton,KS**  
**Tempero #6-23**  
Job Ticket: 60253      **DST#: 3**  
Test Start: 2014.08.04 @ 23:08:00

## Mud and Cushion Information

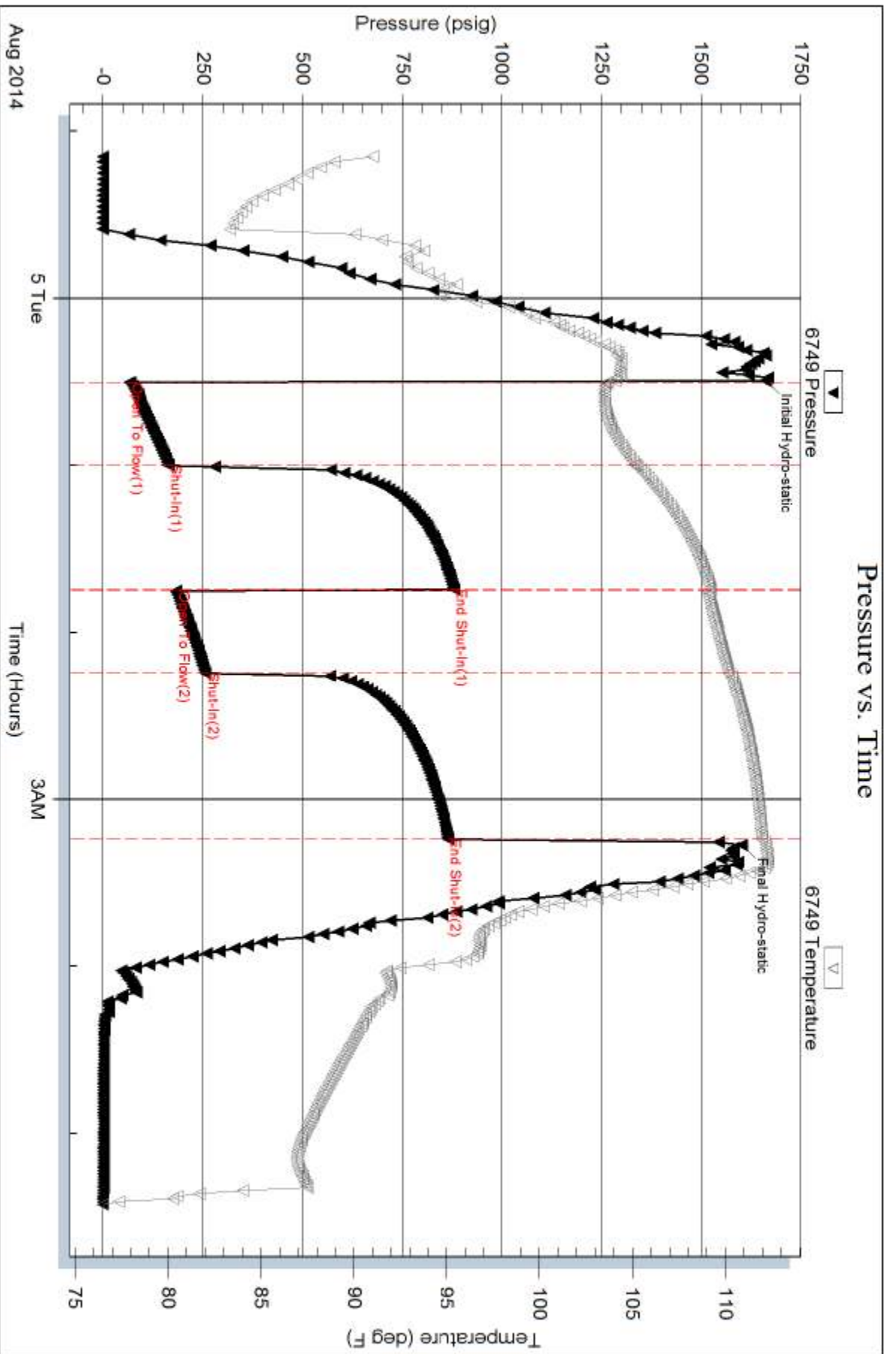
Mud Type: Gel Chem	Cushion Type:	Oil API:	deg API
Mud Weight: 9.00 lb/gal	Cushion Length: ft	Water Salinity:	ppm
Viscosity: 46.00 sec/qt	Cushion Volume: bbl		
Water Loss: 10.19 in <sup>3</sup>	Gas Cushion Type:		
Resistivity: ohm.m	Gas Cushion Pressure: psig		
Salinity: 7700.00 ppm			
Filter Cake: 2.00 inches			

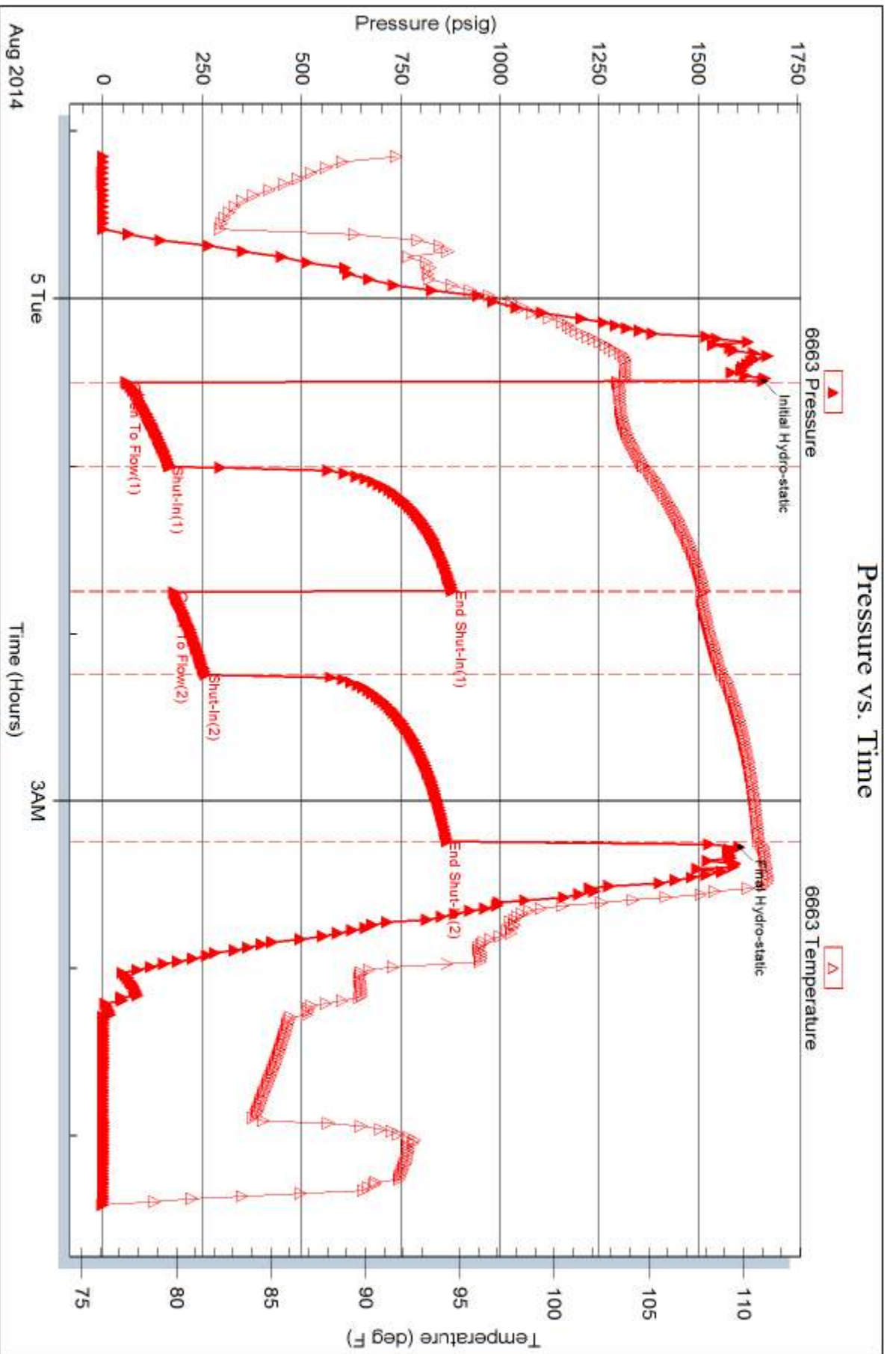
## Recovery Information

Recovery Table

Length ft	Description	Volume bbl
0.00	201 feet of gas in pipe/100% gas	0.000
248.00	Oil cut Gassy Mud/Oil 5% Gas 10% Mud 85%	3.479
419.00	Clean gassy Oil/Gas 10% Oil 90%	5.877
0.00	Corrected gravity of oil 40	0.000

Total Length: 667.00 ft      Total Volume: 9.356 bbl  
Num Fluid Samples: 0      Num Gas Bombs: 0      Serial #:  
Laboratory Name:      Laboratory Location:  
Recovery Comments:









# TRILOBITE TESTING INC.

1515 Commerce Parkway • Hays, Kansas 67601

## Test Ticket

60251

NO.

4/10

Well Name & No. Tempera #6-23 Test No. 1 Date 3 Aug 14  
 Company American Warrior Incorporated Elevation 1915 KB 1907 GL  
 Address 3118 Cummings Rd PO Box 399 Garden City, Kansas 67846  
 Co. Rep / Geo. Adam Folk Rig Duke Drilling Co. Rig #8  
 Location: Sec. 23 Twp. 17S Rge. 14W Co. Barton State KS

Interval Tested 3219-3250 Zone Tested Lansing/Kansas City  
 Anchor Length 31 ft Drill Pipe Run 3222 Mud Wt. 9.1  
 Top Packer Depth 3214 Drill Collars Run -0- Vis 59  
 Bottom Packer Depth 3219 Wt. Pipe Run -0- WL 10.4  
 Total Depth 3250 Chlorides 9000 ppm System LCM 0  
 Blow Description Weak blow/Blow built to 2 1/2 inches  
No blow back on 1st shut in  
Fair blow/Blow built to 10 inches

Rec	Feet of	%gas	%oil	%water	%mud
<u>110</u>	<u>Gas in pipe</u>	<u>100</u>			
<u>10</u>	<u>Muddy Oil</u>		<u>60</u>		<u>40</u>
<u>60</u>	<u>oil cut mud</u>		<u>5</u>		<u>95</u>

Rec Total \_\_\_\_\_ BHT \_\_\_\_\_ Gravity \_\_\_\_\_ API RW \_\_\_\_\_ @ \_\_\_\_\_ °F Chlorides \_\_\_\_\_ ppm

(A) Initial Hydrostatic \_\_\_\_\_  Test 1150 T-On Location 6:15 am  
 (B) First Initial Flow \_\_\_\_\_  Jars \_\_\_\_\_ T-Started 9:15 am  
 (C) First Final Flow \_\_\_\_\_  Safety Joint \_\_\_\_\_ T-Open 11:24 am  
 (D) Initial Shut-In \_\_\_\_\_  Circ Sub \_\_\_\_\_ T-Pulled 2:09 pm  
 (E) Second Initial Flow \_\_\_\_\_  Hourly Standby \_\_\_\_\_ T-Out 3:30 pm  
 (F) Second Final Flow \_\_\_\_\_  Mileage 98 151.90 Comments Told 7:00 am  
 (G) Final Shut-In \_\_\_\_\_  Sampler \_\_\_\_\_ on bank, 9:15 am  
 (H) Final Hydrostatic \_\_\_\_\_  Straddle \_\_\_\_\_ brake bit  
 Ruined Shale Packer \_\_\_\_\_  
 Ruined Packer 320  
 Extra Copies \_\_\_\_\_  
 Initial Open 30 minutes  Extra Packer \_\_\_\_\_  
 Initial Shut-In 30 minutes  Extra Recorder \_\_\_\_\_  
 Final Flow 45 minutes  Day Standby \_\_\_\_\_  
 Final Shut-In 60 minutes  Accessibility \_\_\_\_\_  
 Sub Total 1301.90 MP/DST Disc't \_\_\_\_\_  
 Sub Total \_\_\_\_\_

Approved By \_\_\_\_\_

Our Representative [Signature]

Trilobite Testing Inc. shall not be liable for damaged of any kind of the property or personnel of the one for whom a test is made, or for any loss suffered or sustained, directly or indirectly, through the use of its equipment, or its statements or opinion concerning the results of any test, tools lost or damaged in the hole shall be paid for at cost by the party for whom the test is made.





# TRILOBITE TESTING INC.

1515 Commerce Parkway • Hays, Kansas 67601

## Test Ticket

NO. 60252

4/10

Well Name & No. Tempero #6-23 Test No. 2 Date 4 Aug 14  
 Company American Warrior Incorporated Elevation 1915 KB 1907 GL  
 Address 3118 Cummings Road PO Box 399 Garden City, Kansas 67846  
 Co. Rep / Geo. Adam Folk Rig Duke Drilling Co. Rig #8  
 Location: Sec. 23 Twp. 17S Rge. 14W Co. Barton State KS

Interval Tested 3279-3330 Zone Tested Lansing/Kansas City zones J+K  
 Anchor Length 51 Drill Pipe Run 3286 Mud Wt. 9.1  
 Top Packer Depth 3274 Drill Collars Run 0 Vis 59  
 Bottom Packer Depth 3279 Wt. Pipe Run 0 WL 10.4  
 Total Depth 3330 Chlorides 9000 ppm System LCM 0

Blow Description Weak blow/Flow built to 1/2 inch on 1st Flow  
No blow back on 1st shut in  
Very weak blow/Flow built to 1/4 inch on 2nd Flow  
No blow back on 2nd shut in

Rec	Feet of	%gas	%oil	%water	%mud
<u>30</u>	<u>Mud with show of oil</u>			<u>100</u>	
Rec	Feet of	%gas	%oil	%water	%mud
Rec	Feet of	%gas	%oil	%water	%mud
Rec	Feet of	%gas	%oil	%water	%mud
Rec	Feet of	%gas	%oil	%water	%mud

Rec Total 30 BHT \_\_\_\_\_ Gravity \_\_\_\_\_ API RW \_\_\_\_\_ @ \_\_\_\_\_ °F Chlorides \_\_\_\_\_ ppm

(A) Initial Hydrostatic 1626  Test 1150 T-On Location 4:15 am  
 (B) First Initial Flow 36  Jars \_\_\_\_\_ T-Started 4:37 am  
 (C) First Final Flow 44  Safety Joint \_\_\_\_\_ T-Open 6:03 am  
 (D) Initial Shut-In 489  Circ Sub \_\_\_\_\_ T-Pulled 8:18 am  
 (E) Second Initial Flow 46  Hourly Standby \_\_\_\_\_ T-Out 9:20 am  
 (F) Second Final Flow 49  Mileage 98 151.90 Comments \_\_\_\_\_  
 (G) Final Shut-In 506  Sampler \_\_\_\_\_  
 (H) Final Hydrostatic 1581  Straddle \_\_\_\_\_  Ruined Shale Packer \_\_\_\_\_  
 Shale Packer \_\_\_\_\_  Ruined Packer \_\_\_\_\_  
 Extra Packer \_\_\_\_\_  Extra Copies \_\_\_\_\_  
 Initial Open 30 minutes  Extra Recorder \_\_\_\_\_ Sub Total 0  
 Initial Shut-In 30 minutes  Day Standby \_\_\_\_\_ Total 1301.90  
 Final Flow 30 minutes  Accessibility \_\_\_\_\_ MP/DST Disc't \_\_\_\_\_  
 Final Shut-In 45 minutes Sub Total 1301.90

Approved By \_\_\_\_\_ Our Representative [Signature]

Trilobite Testing Inc. shall not be liable for damaged of any kind of the property or personnel of the one for whom a test is made, or for any loss suffered or sustained, directly or indirectly, through the use of its equipment, or its statements or opinion concerning the results of any test, tools lost or damaged in the hole shall be paid for at cost by the party for whom the test is made.





# TRILOBITE TESTING INC.

1515 Commerce Parkway • Hays, Kansas 67601

## Test Ticket

NO. 60253

Well Name & No. Temporo #6-23 Test No. 3 Date 5 Aug 14  
 Company American Warrior Incorporated Elevation 1915 KB 1907 GL  
 Address 3118 Cummings Road PO Box 399 Garden City Kansas 67846  
 Co. Rep / Geo. Adam Folk Rig Duke Drilling Rig #8  
 Location: Sec. 23 Twp. 17S Rge. 14W Co. Barton State KS

Interval Tested 3348 - 3399 Zone Tested Base KC/Arbuckle  
 Anchor Length 51 Drill Pipe Run 3348 Mud Wt. 9.1  
 Top Packer Depth 3394 Drill Collars Run 0 Vis 46  
 Bottom Packer Depth 3399 Wt. Pipe Run 0 WL 10.2  
 Total Depth 3399 Chlorides 7,700 ppm System LCM 0  
 Blow Description Good blow/Blow built to bottom of bucket in 3 minutes 45 seconds  
Blow back built to 7 1/2 inches  
Good blow/Blow built to bottom of bucket in 7 minutes  
Blow back built to 1/2 inch

Rec	Feet of	%gas	%oil	%water	%mud
207	Gas in pipe	100			
248	Oil cut Gassy Mud	10	5	85	
419	Clean Gassy Oil	10	90		
		%gas	%oil	%water	%mud
		%gas	%oil	%water	%mud

Rec Total 667 BHT \_\_\_\_\_ Gravity 40 API RW \_\_\_\_\_ @ \_\_\_\_\_ °F Chlorides \_\_\_\_\_ ppm

(A) Initial Hydrostatic 1661  Test 1150 T-On Location 11:00 pm  
 (B) First Initial Flow 65  Jars \_\_\_\_\_ T-Started 11:08 pm  
 (C) First Final Flow 163  Safety Joint \_\_\_\_\_ T-Open 12:30 am  
 (D) Initial Shut-In 880  Circ Sub \_\_\_\_\_ T-Pulled 3:15 am  
 (E) Second Initial Flow 182  Hourly Standby \_\_\_\_\_ T-Out 5:00 am  
 (F) Second Final Flow 255  Mileage 98 151.90 Comments \_\_\_\_\_  
 (G) Final Shut-In 865  Sampler \_\_\_\_\_  
 (H) Final Hydrostatic 1601  Straddle \_\_\_\_\_  Ruined Shale Packer \_\_\_\_\_  
 Shale Packer \_\_\_\_\_  Ruined Packer \_\_\_\_\_  
 Extra Packer \_\_\_\_\_  Extra Copies \_\_\_\_\_  
 Initial Open 30  Extra Recorder \_\_\_\_\_ Sub Total 0  
 Initial Shut-In 45  Day Standby \_\_\_\_\_ Total 1301.90  
 Final Flow 30  Accessibility \_\_\_\_\_ MP/DST Disc't \_\_\_\_\_  
 Final Shut-In 60 Sub Total 1301.90

Approved By \_\_\_\_\_ Our Representative [Signature]

Trilobite Testing Inc. shall not be liable for damaged of any kind of the property or personnel of the one for whom a test is made, or for any loss suffered or sustained, directly or indirectly, through the use of its equipment, or its statements or opinion concerning the results of any test, tools lost or damaged in the hole shall be paid for at cost by the party for whom the test is made.