



DRILL STEM TEST REPORT

Prepared For: **H & C Oil Oper. Inc.**

P.O. Box 86
Plainville, KS 67663

ATTN: Marc Downing

Rosalie #17-2

17-9s-24w Graham,KS

Start Date: 2014.03.18 @ 15:49:12

End Date: 2014.03.18 @ 22:16:42

Job Ticket #: 52485 DST #: 1

Trilobite Testing, Inc
PO Box 362 Hays, KS 67601
ph: 785-625-4778 fax: 785-625-5620

Printed: 2014.03.21 @ 16:11:52



TRILOBITE TESTING, INC

DRILL STEM TEST REPORT

H & C Oil Oper. Inc.

17-9s-24w Graham,KS

P.O. Box 86
Plainville, KS 67663

Rosalie #17-2

Job Ticket: 52485

DST#: 1

ATTN: Marc Downing

Test Start: 2014.03.18 @ 15:49:12

GENERAL INFORMATION:

Formation: **LKC "H"**

Deviated: No Whipstock: 0.00 ft (KB)

Time Tool Opened: 17:29:42

Time Test Ended: 22:16:42

Test Type: Conventional Bottom Hole (Initial)

Tester: Ryan Reynolds

Unit No: 68

Interval: 3822.00 ft (KB) To 3864.00 ft (KB) (TVD)

Reference Elevations: 2479.00 ft (KB)

Total Depth: 3864.00 ft (KB) (TVD)

2473.00 ft (CF)

Hole Diameter: 7.88 inches Hole Condition: Fair

KB to GR/CF: 6.00 ft

Serial #: 8790

Inside

Press@RunDepth: 48.39 psig @ 3827.00 ft (KB)

Capacity: 8000.00 psig

Start Date: 2014.03.18

End Date:

2014.03.18

Last Calib.:

2014.03.18

Start Time: 15:49:17

End Time:

22:16:41

Time On Btm:

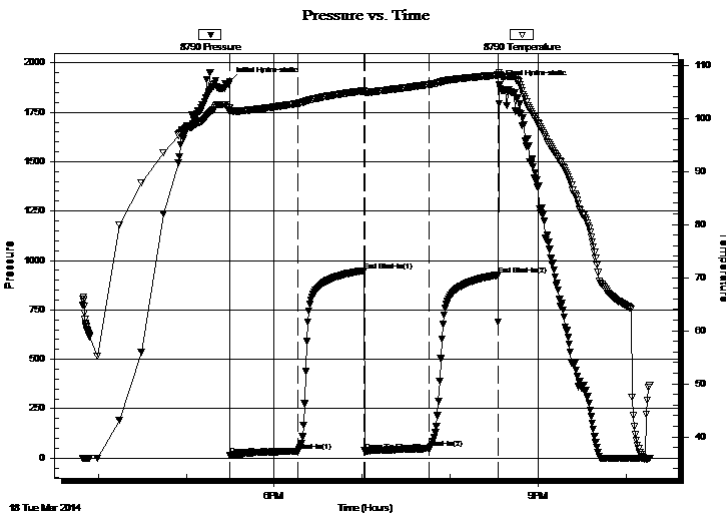
2014.03.18 @ 17:29:27

Time Off Btm:

2014.03.18 @ 20:33:42

TEST COMMENT: IF: Weak blow . surf. - 2"
IS: No blow
FF: Weak blow . surf. - 1"
FS: No blow

PRESSURE SUMMARY



Time (Min.)	Pressure (psig)	Temp (deg F)	Annotation
0	1904.22	101.90	Initial Hydro-static
1	12.60	101.16	Open To Flow (1)
47	35.09	102.79	Shut-In(1)
92	948.94	105.14	End Shut-In(1)
93	36.72	104.87	Open To Flow (2)
137	48.39	106.33	Shut-In(2)
183	926.39	108.09	End Shut-In(2)
185	1890.69	108.61	Final Hydro-static

Recovery

Length (ft)	Description	Volume (bbl)
60.00	VSLI OCWM trc%o, 50%w, 50%m	0.57
20.00	OWCM 3%o, 19%w, 78%m	0.28
1.00	Clean oil 100%oil	0.01

Gas Rates

	Choke (inches)	Pressure (psig)	Gas Rate (m ³ /d)



**TRILOBITE
TESTING, INC**

DRILL STEM TEST REPORT

TOOL DIAGRAM

H & C Oil Oper. Inc.

17-9s-24w Graham,KS

P.O. Box 86
Plainville, KS 67663

Rosalie #17-2

Job Ticket: 52485

DST#: 1

ATTN: Marc Downing

Test Start: 2014.03.18 @ 15:49:12

Tool Information

Drill Pipe:	Length: 3782.00 ft	Diameter: 3.80 inches	Volume: 53.05 bbl	Tool Weight: 2000.00 lb
Heavy Wt. Pipe:	Length: 0.00 ft	Diameter: inches	Volume: 0.00 bbl	Weight set on Packer: 20000.00 lb
Drill Collar:	Length: 30.00 ft	Diameter: 2.25 inches	Volume: 0.15 bbl	Weight to Pull Loose: 60000.00 lb
			<u>Total Volume: 53.20 bbl</u>	Tool Chased 0.00 ft
Drill Pipe Above KB:	10.00 ft			String Weight: Initial 54000.00 lb
Depth to Top Packer:	3822.00 ft			Final 55000.00 lb
Depth to Bottom Packer:	ft			
Interval between Packers:	42.00 ft			
Tool Length:	62.00 ft			
Number of Packers:	2	Diameter: 6.75 inches		

Tool Comments:

Tool Description

Tool Description	Length (ft)	Serial No.	Position	Depth (ft)	Accum. Lengths
Change Over Sub	1.00			3803.00	
Shut In Tool	5.00			3808.00	
Hydraulic tool	5.00			3813.00	
Packer	5.00			3818.00	20.00 Bottom Of Top Packer
Packer	4.00			3822.00	
Stubb	1.00			3823.00	
Perforations	3.00			3826.00	
Change Over Sub	1.00			3827.00	
Recorder	0.00	8790	Inside	3827.00	
Recorder	0.00	8792	Outside	3827.00	
Drill Pipe	31.00			3858.00	
Change Over Sub	1.00			3859.00	
Perforations	2.00			3861.00	
Bullnose	3.00			3864.00	42.00 Bottom Packers & Anchor

Total Tool Length: 62.00



**TRILOBITE
TESTING, INC**

DRILL STEM TEST REPORT

FLUID SUMMARY

H & C Oil Oper. Inc.

17-9s-24w Graham,KS

P.O. Box 86
Plainville, KS 67663

Rosalie #17-2

Job Ticket: 52485

DST#: 1

ATTN: Marc Downing

Test Start: 2014.03.18 @ 15:49:12

Mud and Cushion Information

Mud Type: Gel Chem

Cushion Type:

Oil API:

deg API

Mud Weight: 9.00 lb/gal

Cushion Length:

ft

Water Salinity:

63000 ppm

Viscosity: 55.00 sec/qt

Cushion Volume:

bbbl

Water Loss: 7.18 in³

Gas Cushion Type:

Resistivity: ohm.m

Gas Cushion Pressure:

psig

Salinity: 1500.00 ppm

Filter Cake: 0.02 inches

Recovery Information

Recovery Table

Length ft	Description	Volume bbl
60.00	VSLI OCWM trc%o, 50%w, 50%m	0.568
20.00	OWCM 3%o, 19%w, 78%m	0.281
1.00	Clean oil 100%oil	0.014

Total Length: 81.00 ft

Total Volume: 0.863 bbl

Num Fluid Samples: 0

Num Gas Bombs: 0

Serial #: none

Laboratory Name:

Laboratory Location:

Recovery Comments:

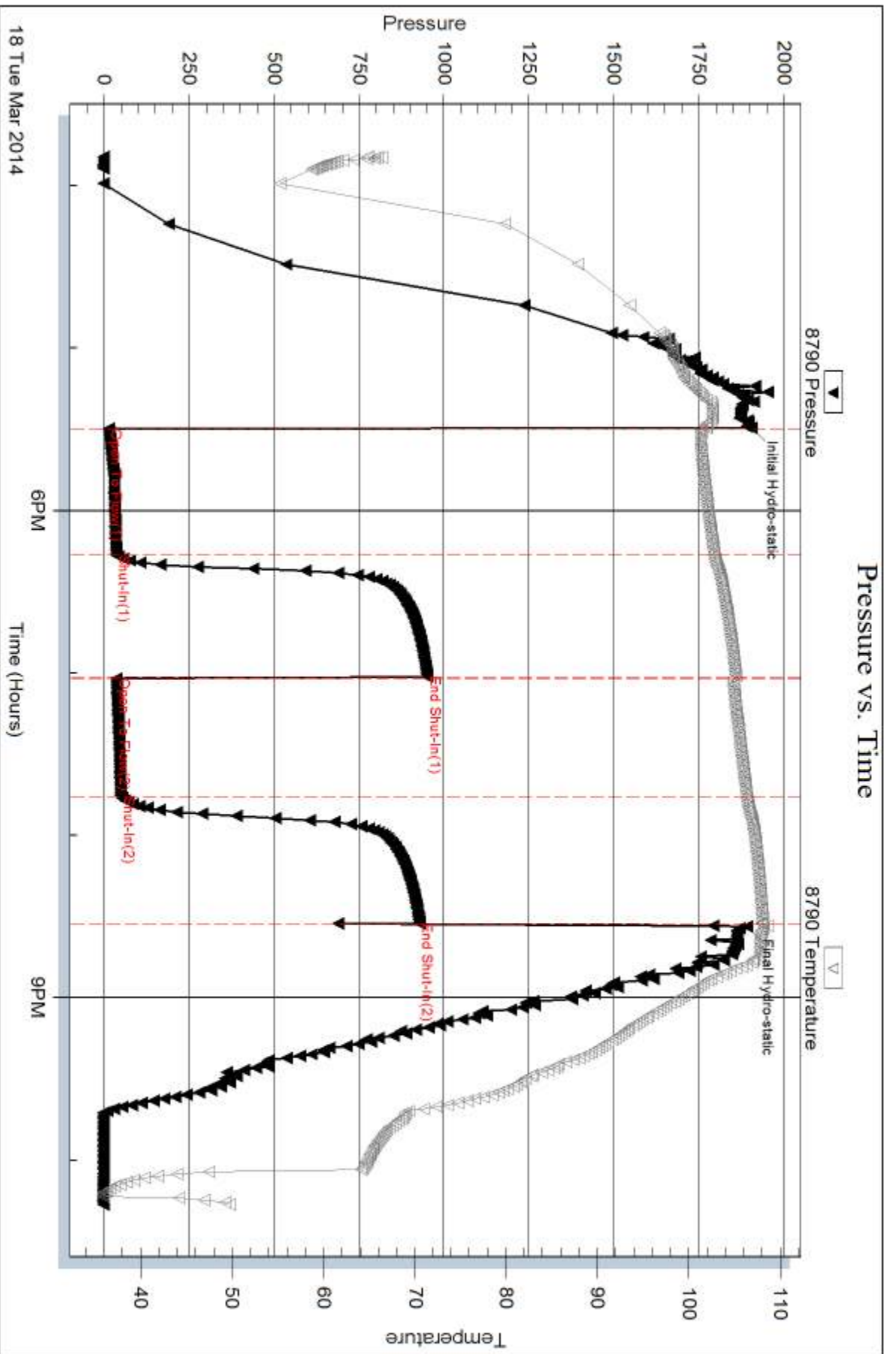
Serial #: 8790

Inside

H & C Oil Oper. Inc.

Rosalie #17-2

DST Test Number: 1



Triobite Testing, Inc

Ref. No: 52485

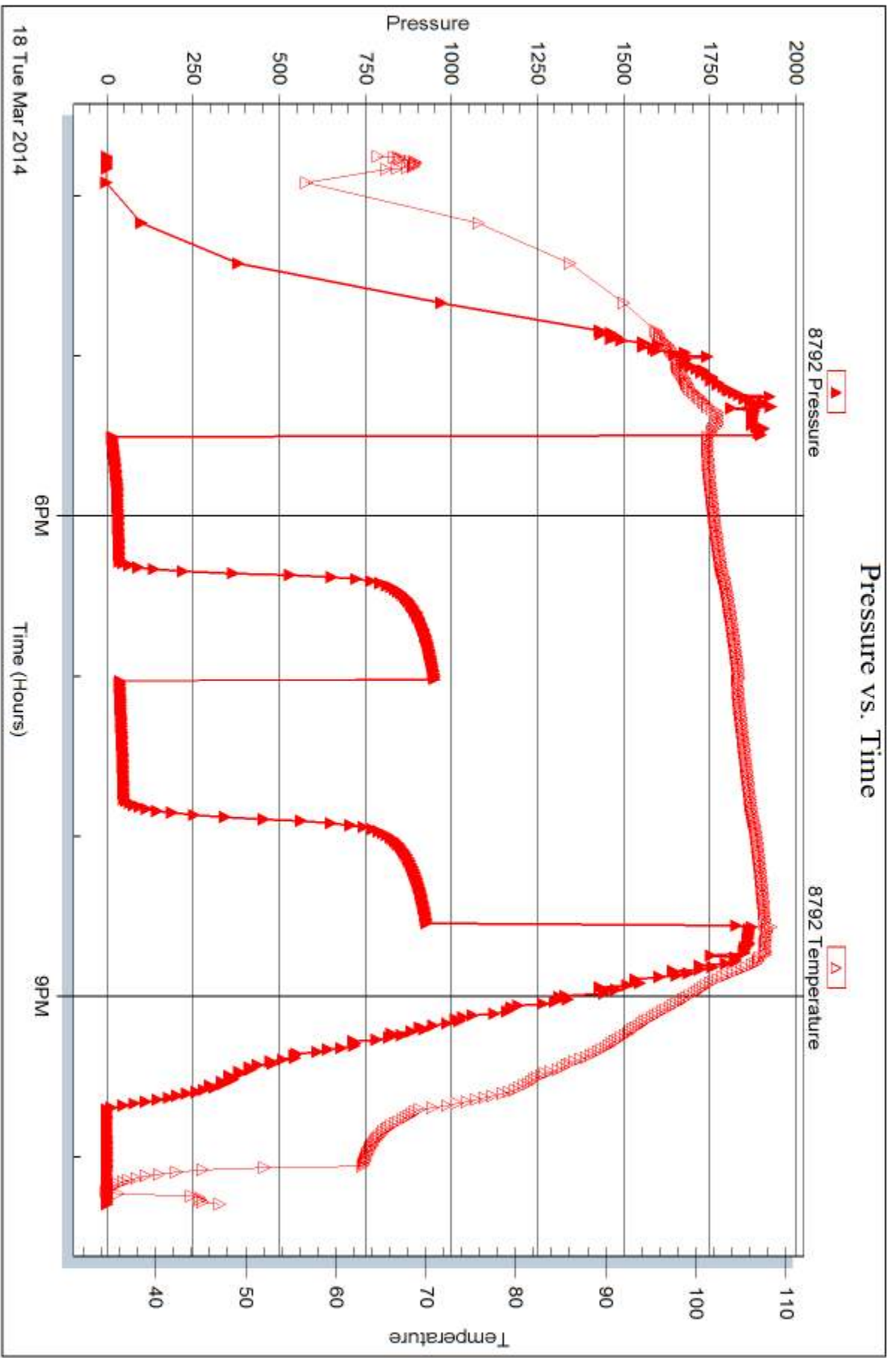
Printed: 2014.03.21 @ 16:11:54

Serial #: 8792

Outside H & C Oil Oper. Inc.

Rosalie #17-2

DST Test Number: 1



Triobite Testing, Inc

Ref. No: 52485

Printed: 2014.03.21 @ 16:11:54



DRILL STEM TEST REPORT

Prepared For: **H & C Oil Oper. Inc.**

P.O. Box 86
Plainville, KS 67663

ATTN: Marc Downing

Rosalie #17-2

17-9s-24w Graham,KS

Start Date: 2014.03.19 @ 16:17:14

End Date: 2014.03.19 @ 21:53:44

Job Ticket #: 52486 DST #: 2

Trilobite Testing, Inc
PO Box 362 Hays, KS 67601
ph: 785-625-4778 fax: 785-625-5620

Printed: 2014.03.21 @ 16:11:24

H & C Oil Oper. Inc. 17-9s-24w Graham,KS Rosalie #17-2 DST # 2 LKC H-J 2014.03.19



TRILOBITE TESTING, INC

DRILL STEM TEST REPORT

H & C Oil Oper. Inc.

17-9s-24w Graham,KS

P.O. Box 86
Plainville, KS 67663

Rosalie #17-2

Job Ticket: 52486

DST#: 2

ATTN: Marc Downing

Test Start: 2014.03.19 @ 16:17:14

GENERAL INFORMATION:

Formation: **LKC H-J**

Deviated: No Whipstock: 0.00 ft (KB)

Time Tool Opened: 18:13:44

Time Test Ended: 21:53:44

Test Type: Conventional Bottom Hole (Reset)

Tester: Ryan Reynolds

Unit No: 68

Interval: 3927.00 ft (KB) To 3992.00 ft (KB) (TVD)

Reference Elevations: 2479.00 ft (KB)

Total Depth: 3992.00 ft (KB) (TVD)

2473.00 ft (CF)

Hole Diameter: 7.88 inches Hole Condition: Fair

KB to GR/CF: 6.00 ft

Serial #: 8790

Inside

Press@RunDepth: 40.05 psig @ 3931.50 ft (KB)

Capacity: 8000.00 psig

Start Date: 2014.03.19

End Date:

2014.03.19

Last Calib.:

2014.03.19

Start Time: 16:17:19

End Time:

21:53:43

Time On Btm:

2014.03.19 @ 18:13:29

Time Off Btm:

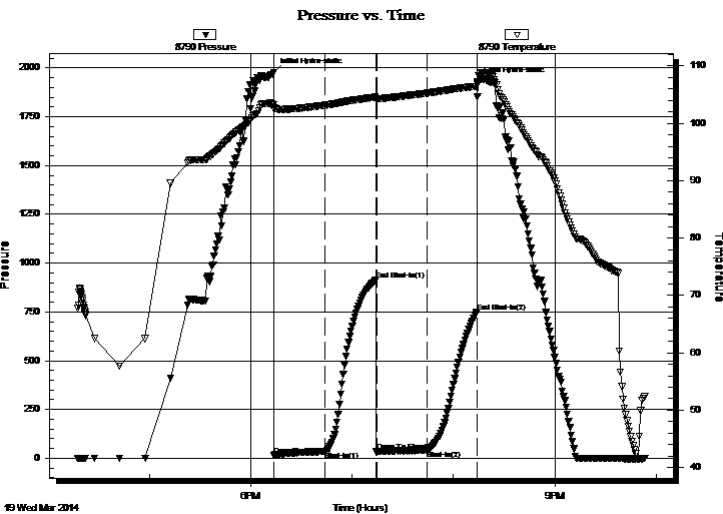
2014.03.19 @ 20:13:59

TEST COMMENT: IF: Weak blow . surf. - 1"

IS: No blow

FF: Weak blow . surf. - 1 1/2"

FS: No blow



PRESSURE SUMMARY

Time (Min.)	Pressure (psig)	Temp (deg F)	Annotation
0	1977.82	103.21	Initial Hydro-static
1	15.24	102.51	Open To Flow (1)
31	33.36	103.15	Shut-In(1)
61	912.88	104.54	End Shut-In(1)
61	34.79	104.30	Open To Flow (2)
91	40.05	105.26	Shut-In(2)
121	747.53	106.45	End Shut-In(2)
121	1929.73	106.89	Final Hydro-static

Recovery

Length (ft)	Description	Volume (bbl)
60.00	OCM 10%o, 90%m	0.57
0.00	free oil in hyd. tool	0.00

* Recovery from multiple tests

Gas Rates

	Choke (inches)	Pressure (psig)	Gas Rate (m ³ /d)



**TRILOBITE
TESTING, INC**

DRILL STEM TEST REPORT

TOOL DIAGRAM

H & C Oil Oper. Inc.

17-9s-24w Graham,KS

P.O. Box 86
Plainville, KS 67663

Rosalie #17-2

Job Ticket: 52486

DST#: 2

ATTN: Marc Downing

Test Start: 2014.03.19 @ 16:17:14

Tool Information

Drill Pipe:	Length: 3901.00 ft	Diameter: 3.80 inches	Volume: 54.72 bbl	Tool Weight: 2000.00 lb
Heavy Wt. Pipe:	Length: 0.00 ft	Diameter: inches	Volume: 0.00 bbl	Weight set on Packer: 20000.00 lb
Drill Collar:	Length: 30.00 ft	Diameter: 2.25 inches	Volume: 0.15 bbl	Weight to Pull Loose: 70000.00 lb
			<u>Total Volume: 54.87 bbl</u>	Tool Chased 0.00 ft
Drill Pipe Above KB:	24.00 ft			String Weight: Initial 56000.00 lb
Depth to Top Packer:	3927.00 ft			Final 56000.00 lb
Depth to Bottom Packer:	ft			
Interval between Packers:	65.00 ft			
Tool Length:	85.00 ft			
Number of Packers:	2	Diameter: 6.75 inches		

Tool Comments:

Tool Description

Tool Description	Length (ft)	Serial No.	Position	Depth (ft)	Accum. Lengths
Change Over Sub	1.00			3908.00	
Shut In Tool	5.00			3913.00	
Hydraulic tool	5.00			3918.00	
Packer	5.00			3923.00	20.00 Bottom Of Top Packer
Packer	4.00			3927.00	
Stubb	1.00			3928.00	
Perforations	3.00			3931.00	
Change Over Sub	0.50			3931.50	
Recorder	0.00	8790	Inside	3931.50	
Recorder	0.00	8792	Outside	3931.50	
Drill Pipe	30.50			3962.00	
Change Over Sub	1.00			3963.00	
Perforations	26.00			3989.00	
Bullnose	3.00			3992.00	65.00 Bottom Packers & Anchor

Total Tool Length: 85.00



**TRILOBITE
TESTING, INC**

DRILL STEM TEST REPORT

FLUID SUMMARY

H & C Oil Oper. Inc.

17-9s-24w Graham,KS

P.O. Box 86
Plainville, KS 67663

Rosalie #17-2

Job Ticket: 52486

DST#: 2

ATTN: Marc Downing

Test Start: 2014.03.19 @ 16:17:14

Mud and Cushion Information

Mud Type: Gel Chem

Cushion Type:

Oil API:

deg API

Mud Weight: 10.00 lb/gal

Cushion Length:

ft

Water Salinity:

1200 ppm

Viscosity: 52.00 sec/qt

Cushion Volume:

bbbl

Water Loss: 5.99 in³

Gas Cushion Type:

Resistivity: ohm.m

Gas Cushion Pressure:

psig

Salinity: 1200.00 ppm

Filter Cake: 0.02 inches

Recovery Information

Recovery Table

Length ft	Description	Volume bbl
60.00	OCM 10%o, 90%m	0.568
0.00	free oil in hyd. tool	0.000

Total Length: 60.00 ft Total Volume: 0.568 bbl

Num Fluid Samples: 0

Num Gas Bombs: 0

Serial #: none

Laboratory Name:

Laboratory Location:

Recovery Comments:

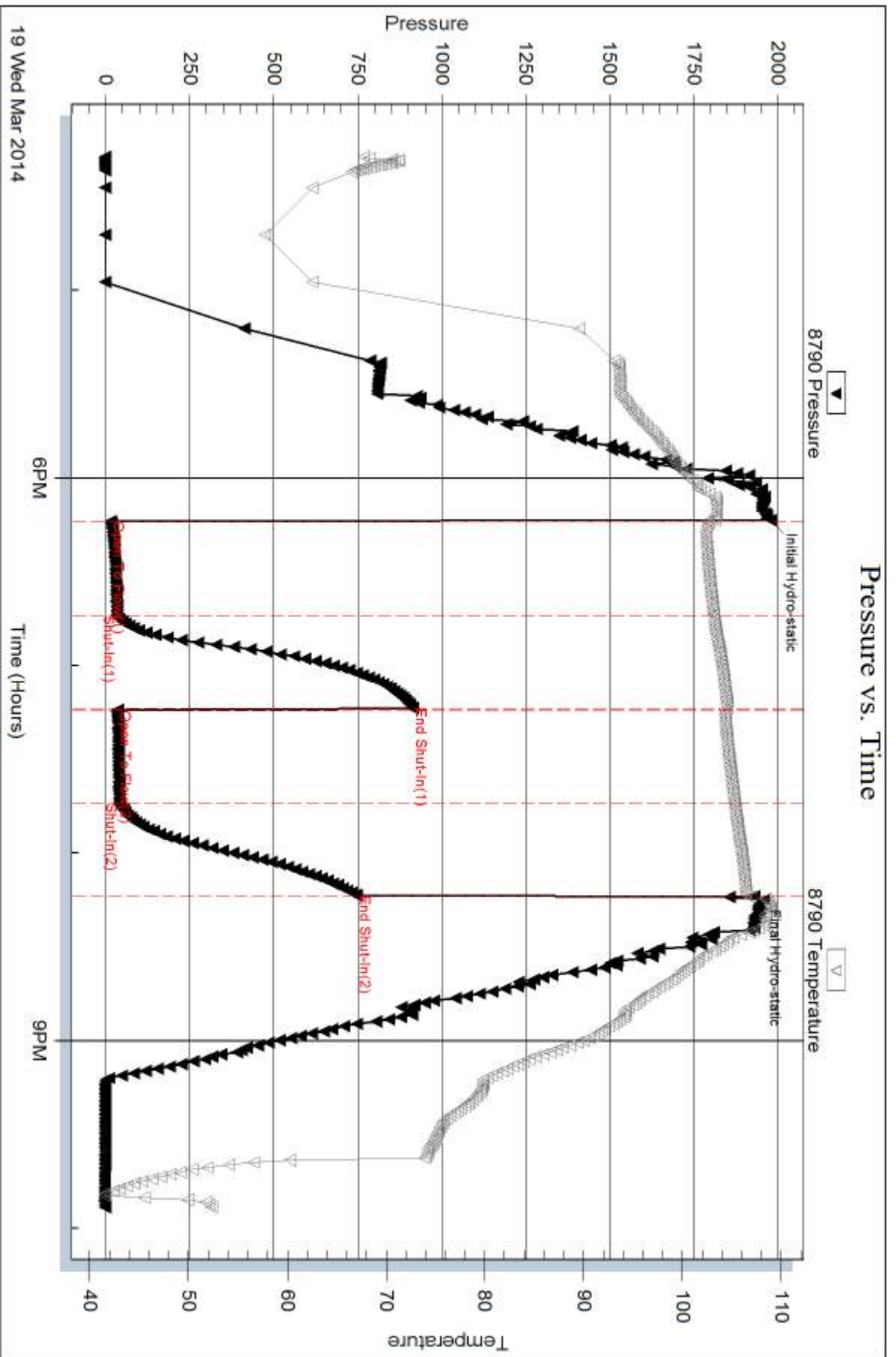
Serial #: 8790

Inside

H & C Oil Oper. Inc.

Rosalie #17-2

DST Test Number: 2



Trilobite Testing, Inc

Ref. No: 52486

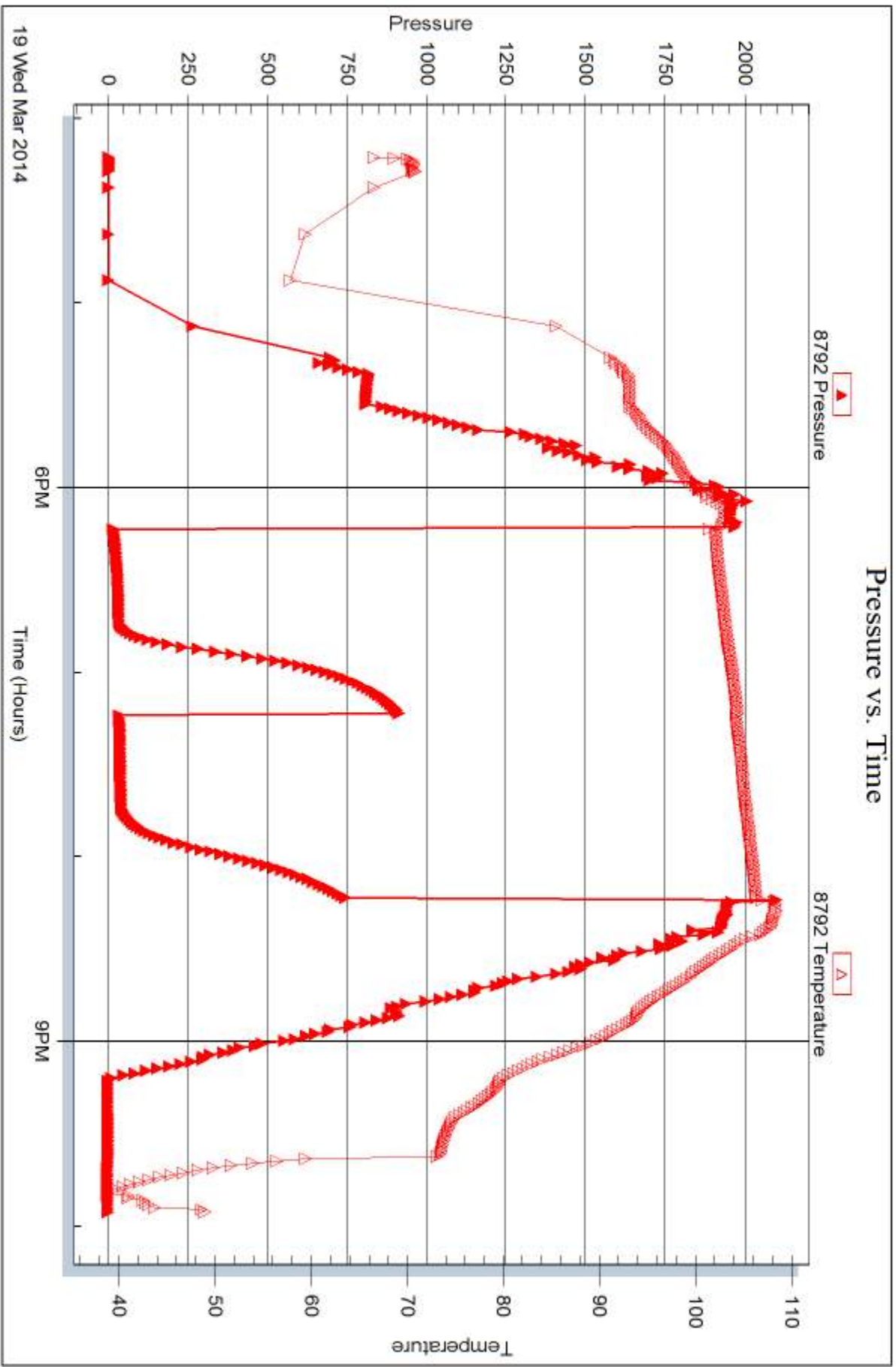
Printed: 2014.03.21 @ 16:11:26

Serial #: 8792

Outside H & C Oil Oper. Inc.

Rosalie #17-2

DST Test Number: 2



Trilobite Testing, Inc

Ref. No: 52486

Printed: 2014.03.21 @ 16:11:26



DRILL STEM TEST REPORT

Prepared For: **H & C Oil Oper. Inc.**

P.O. Box 86
Plainville, KS 67663

ATTN: Marc Downing

Rosalie #17-2

17-9s-24w Graham,KS

Start Date: 2014.03.20 @ 08:25:10

End Date: 2014.03.20 @ 15:12:10

Job Ticket #: 52487 DST #: 3

Trilobite Testing, Inc
PO Box 362 Hays, KS 67601
ph: 785-625-4778 fax: 785-625-5620

Printed: 2014.03.21 @ 16:10:40

H & C Oil Oper. Inc. 17-9s-24w Graham,KS Rosalie #17-2 DST # 3 LKC K-L 2014.03.20



TRILOBITE TESTING, INC

DRILL STEM TEST REPORT

H & C Oil Oper. Inc.

17-9s-24w Graham,KS

P.O. Box 86
Plainville, KS 67663

Rosalie #17-2

Job Ticket: 52487

DST#: 3

ATTN: Marc Downing

Test Start: 2014.03.20 @ 08:25:10

GENERAL INFORMATION:

Formation: **LKC K-L**

Deviated: No Whipstock: 0.00 ft (KB)

Time Tool Opened: 10:11:10

Time Test Ended: 15:12:10

Test Type: Conventional Bottom Hole (Reset)

Tester: Ryan Reynolds

Unit No: 68

Interval: 3995.00 ft (KB) To 4048.00 ft (KB) (TVD)

Reference Elevations: 2479.00 ft (KB)

Total Depth: 4048.00 ft (KB) (TVD)

2473.00 ft (CF)

Hole Diameter: 7.88 inches Hole Condition: Fair

KB to GR/CF: 6.00 ft

Serial #: 8790

Inside

Press@RunDepth: 55.65 psig @ 3998.50 ft (KB)

Capacity: 8000.00 psig

Start Date: 2014.03.20

End Date:

2014.03.20

Last Calib.:

2014.03.20

Start Time: 08:25:15

End Time:

15:12:09

Time On Btm:

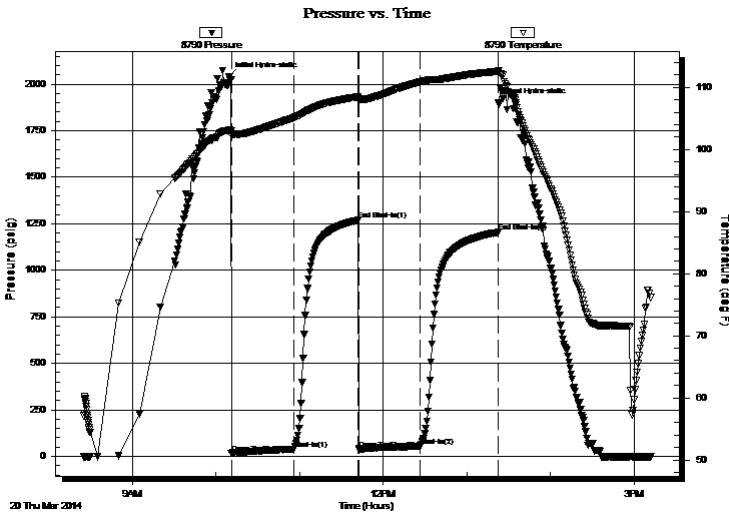
2014.03.20 @ 10:09:25

Time Off Btm:

2014.03.20 @ 13:22:40

TEST COMMENT: IF: Good blow . 1/2" - 8"
IS: No blow
FF: Fair blow . surf. - 5"
FS: No blow

PRESSURE SUMMARY



Time (Min.)	Pressure (psig)	Temp (deg F)	Annotation
0	2042.52	103.13	Initial Hydro-static
2	15.09	102.25	Open To Flow (1)
47	39.20	105.11	Shut-In(1)
93	1268.98	108.48	End Shut-In(1)
94	39.63	108.12	Open To Flow (2)
138	55.65	110.91	Shut-In(2)
193	1204.33	112.58	End Shut-In(2)
194	1902.14	112.76	Final Hydro-static

Recovery

Length (ft)	Description	Volume (bbl)
60.00	GOCM 5%g, 40%o, 55%m	0.57
65.00	CGO 20%g, 80%o	0.91
0.00	180' GIP	0.00

Gas Rates

	Choke (inches)	Pressure (psig)	Gas Rate (m ³ /d)

* Recovery from multiple tests



**TRILOBITE
TESTING, INC**

DRILL STEM TEST REPORT

TOOL DIAGRAM

H & C Oil Oper. Inc.

17-9s-24w Graham,KS

P.O. Box 86
Plainville, KS 67663

Rosalie #17-2

Job Ticket: 52487

DST#: 3

ATTN: Marc Downing

Test Start: 2014.03.20 @ 08:25:10

Tool Information

Drill Pipe:	Length: 3963.00 ft	Diameter: 3.80 inches	Volume: 55.59 bbl	Tool Weight: 2000.00 lb
Heavy Wt. Pipe:	Length: 0.00 ft	Diameter: inches	Volume: 0.00 bbl	Weight set on Packer: 20000.00 lb
Drill Collar:	Length: 30.00 ft	Diameter: 2.25 inches	Volume: 0.15 bbl	Weight to Pull Loose: 63000.00 lb
			<u>Total Volume: 55.74 bbl</u>	Tool Chased 0.00 ft
Drill Pipe Above KB:	18.00 ft			String Weight: Initial 57000.00 lb
Depth to Top Packer:	3995.00 ft			Final 57000.00 lb
Depth to Bottom Packer:	ft			
Interval between Packers:	53.00 ft			
Tool Length:	73.00 ft			
Number of Packers:	2	Diameter: 6.75 inches		

Tool Comments:

Tool Description

Tool Description	Length (ft)	Serial No.	Position	Depth (ft)	Accum. Lengths
Change Over Sub	1.00			3976.00	
Shut In Tool	5.00			3981.00	
Hydraulic tool	5.00			3986.00	
Packer	5.00			3991.00	20.00 Bottom Of Top Packer
Packer	4.00			3995.00	
Stubb	1.00			3996.00	
Perforations	2.00			3998.00	
Change Over Sub	0.50			3998.50	
Recorder	0.00	8790	Inside	3998.50	
Recorder	0.00	8792	Outside	3998.50	
Drill Pipe	30.50			4029.00	
Change Over Sub	1.00			4030.00	
Perforations	15.00			4045.00	
Bullnose	3.00			4048.00	53.00 Bottom Packers & Anchor

Total Tool Length: 73.00



**TRILOBITE
TESTING, INC**

DRILL STEM TEST REPORT

FLUID SUMMARY

H & C Oil Oper. Inc.

17-9s-24w Graham,KS

P.O. Box 86
Plainville, KS 67663

Rosalie #17-2

Job Ticket: 52487

DST#: 3

ATTN: Marc Downing

Test Start: 2014.03.20 @ 08:25:10

Mud and Cushion Information

Mud Type: Gel Chem
Mud Weight: 10.00 lb/gal
Viscosity: 54.00 sec/qt
Water Loss: 7.19 in³
Resistivity: ohm.m
Salinity: 1600.00 ppm
Filter Cake: 0.02 inches

Cushion Type:
Cushion Length: ft
Cushion Volume: bbl
Gas Cushion Type:
Gas Cushion Pressure: psig

Oil API: deg API
Water Salinity: 1600 ppm

Recovery Information

Recovery Table

Length ft	Description	Volume bbl
60.00	GOCM 5%g, 40%o, 55%m	0.568
65.00	CGO 20%g, 80%o	0.912
0.00	180' GIP	0.000

Total Length: 125.00 ft Total Volume: 1.480 bbl

Num Fluid Samples: 0

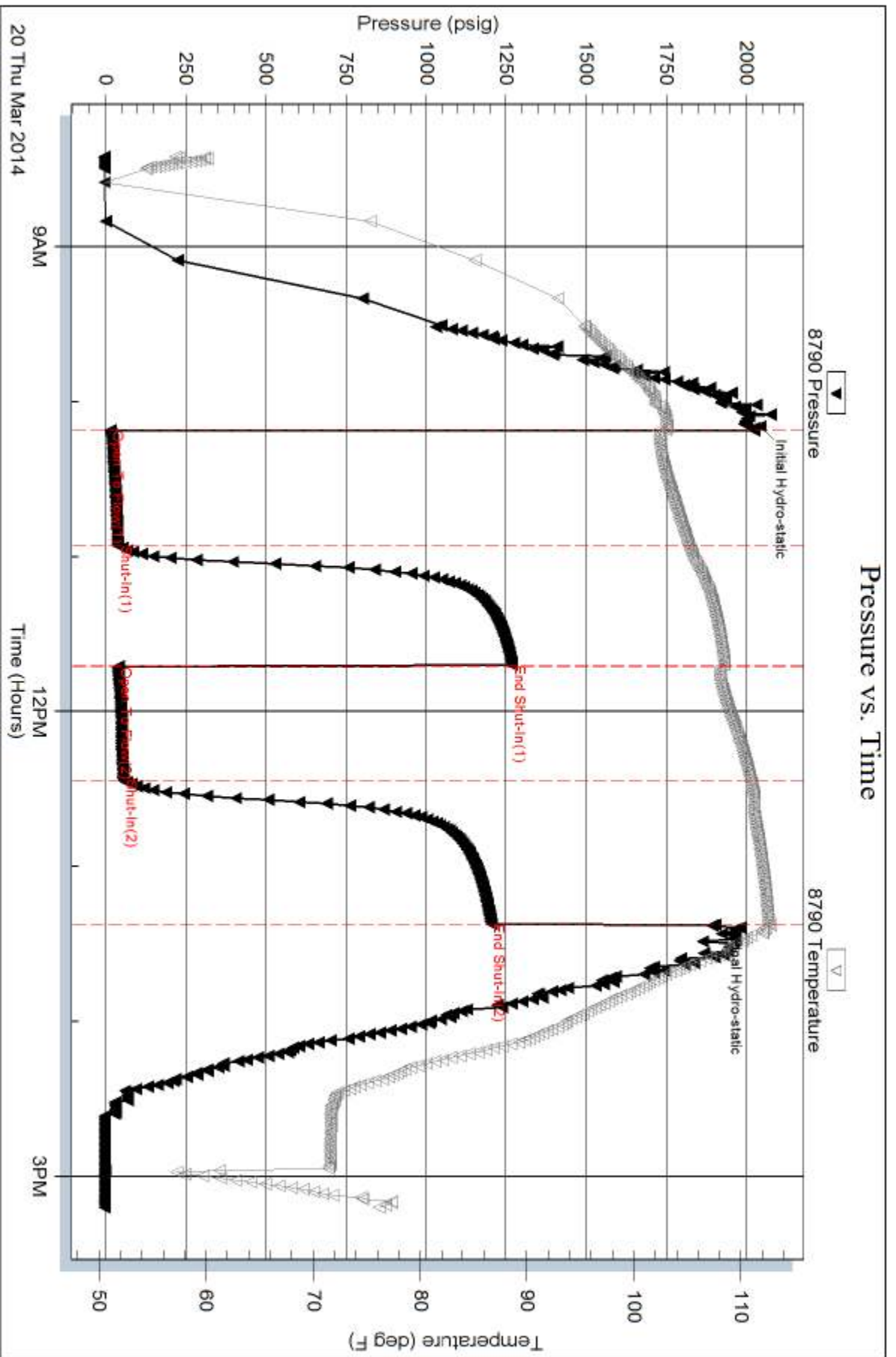
Num Gas Bombs: 0

Serial #: none

Laboratory Name:

Laboratory Location:

Recovery Comments:

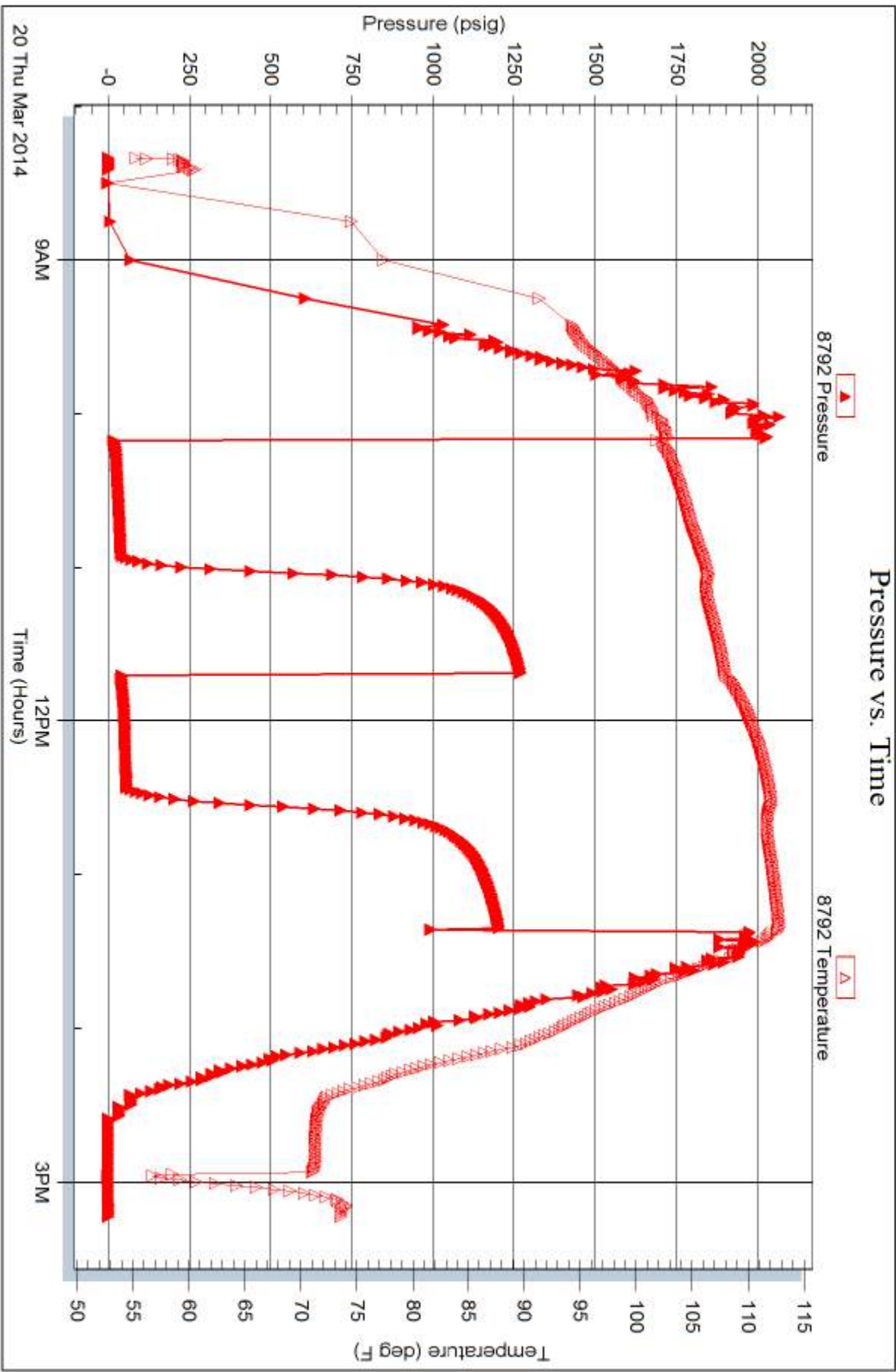


Serial #: 8792

Outside H & C Oil Oper. Inc.

Rosalie #17-2

DST Test Number: 3





TRILOBITE TESTING INC.

1515 Commerce Parkway • Hays, Kansas 67601

Test Ticket

NO. 52485

Well Name & No. Rosalie 17-2 Test No. 1 Date 3-18-14
 Company H+C Oil Oper. Inc. Elevation 2479 KB 2473 GL
 Address P.O. Box 86 Plainville, KS 67663-0086
 Co. Rep / Geo. Marc Downing Rig American Eagle #2
 Location: Sec. 17 Twp. 9s. Rge. 24w. Co. Graham State KS

Interval Tested 3822-3864 Zone Tested LHC "H"
 Anchor Length 42 Drill Pipe Run 3778 Mud Wt. 9.4
 Top Packer Depth 3817 Drill Collars Run 30 Vis 55
 Bottom Packer Depth 3822 Wt. Pipe Run Ø WL 7.2
 Total Depth 3864 Chlorides 1500 ppm System LCM 1 #
 Blow Description IF: Weak blow. Surf. - 2" ISI: No blow.
FF: Weak blow. Surf - 1" FSI: No blow

Rec	Feet of	%gas	%oil	%water	%mud
<u>20</u>	<u>OWCM</u>	<u>3</u>	<u>19</u>	<u>78</u>	
<u>60</u>	<u>VSLI OLWM</u>	<u>Trc</u>	<u>50</u>	<u>50</u>	
<u>1</u>	<u>Clean oil</u>	<u>100</u>			

Rec Total 81 BHT 108 Gravity N/C API RW 2 @ 42 °F Chlorides 63000 ppm
 (A) Initial Hydrostatic 1904 Test 1150 T-On Location 1430
 (B) First Initial Flow 13 Jars _____ T-Started 1549
 (C) First Final Flow 35 Safety Joint _____ T-Open 1730
 (D) Initial Shut-In 949 Circ Sub _____ T-Pulled 2030
 (E) Second Initial Flow 37 Hourly Standby _____ T-Out 2217
 (F) Second Final Flow 48 Mileage 114rt 176.70 Comments _____
 (G) Final Shut-In 926 Sampler _____
 (H) Final Hydrostatic 1891 Straddle _____
 Shale Packer _____
 Shale Packer _____
 Extra Packer _____
 Extra Recorder _____
 Day Standby _____
 Accessibility _____
 Sub Total 1326.70

Initial Open 45
 Initial Shut-In 45
 Final Flow 45
 Final Shut-In 45

Sub Total 0
 Total 1326.70
 MP/DST Disc't _____

Approved By _____ Our Representative Ryan Reynolds
 Trilobite Testing Inc. shall not be liable for damaged of any kind of the property or personnel of the one for whom a test is made, or for any loss suffered or sustained, directly or indirectly, through the use of its equipment, or its statements or opinion concerning the results of any test, tools lost or damaged in the hole shall be paid for at cost by the party for whom the test is made.



TRILOBITE TESTING INC.

1515 Commerce Parkway • Hays, Kansas 67601

Test Ticket

NO. 52486

Well Name & No. Rosalie 17-2 Test No. 2 Date 3-19-14
 Company H+C Oil Oper, Inc. Elevation 2479 KB 2473 GL
 Address P.O. Box 86 Plainville, KS 67663 - 0086
 Co. Rep / Geo. Marc Downing Rig American Eagle #2
 Location: Sec. 17 Twp. 9s. Rge. 24w. Co. Graham State KS

Interval Tested 3927-3992 Zone Tested LKC H-J
 Anchor Length 65 Drill Pipe Run 3901 Mud Wt. 9.5
 Top Packer Depth 3922 Drill Collars Run 30 Vis 52
 Bottom Packer Depth 3927 Wt. Pipe Run Ø WL 6.0
 Total Depth 3992 Chlorides 1200 ppm System LCM 2#
 Blow Description IF: Weak blow surf - 1" ISI: No blow
FF: Weak blow surf - 1 1/2" FSI: No blow

Rec	Feet of	%gas	%oil	%water	%mud
<u>60</u>	<u>OCM</u>	<u>10</u>		<u>90</u>	
Rec	Feet of <u>(Free oil in hyd. Tool)</u>	%gas	%oil	%water	%mud
Rec	Feet of	%gas	%oil	%water	%mud
Rec	Feet of	%gas	%oil	%water	%mud
Rec	Feet of	%gas	%oil	%water	%mud

Rec Total 60 BHT 107 Gravity N/C API RW N/C @ N/C °F Chlorides 1200 ppm
 (A) Initial Hydrostatic 1978 Test 1326.70 T-On Location 1530
 (B) First Initial Flow 15 Jars _____ T-Started 1617
 (C) First Final Flow 33 Safety Joint _____ T-Open 1814
 (D) Initial Shut-In 913 Circ Sub _____ T-Pulled 2015
 (E) Second Initial Flow 35 Hourly Standby _____ T-Out 2154
 (F) Second Final Flow 40 Mileage 176.70 Comments _____
 (G) Final Shut-In 748 Sampler _____
 (H) Final Hydrostatic 1930 Straddle _____ Ruined Shale Packer _____
 Shale Packer _____ Ruined Packer _____
 Extra Packer _____ Extra Copies _____
 Extra Recorder _____ Sub Total 0
 Day Standby _____ Total 1326.70
 Accessibility _____ MP/DST Disc't _____
 Sub Total 1326.70

Approved By _____ Our Representative Ryan Reynolds
 Trilobite Testing Inc. shall not be liable for damaged of any kind of the property or personnel of the one for whom a test is made, or for any loss suffered or sustained, directly or indirectly, through the use of its equipment, or its statements or opinion concerning the results of any test, tools lost or damaged in the hole shall be paid for at cost by the party for whom the test is made.



TRILOBITE TESTING INC.

1515 Commerce Parkway • Hays, Kansas 67601

Test Ticket

NO. 52487

Well Name & No. Rosalie 17.2 Test No. 3 Date 3-20-14
 Company H+C Oil Oper. Inc. Elevation 2479 KB 2473 GL
 Address P.O. Box 86 Plainville, KS 67663-0086
 Co. Rep / Geo. Marc Downing Rig Am. Eagle #2
 Location: Sec. 17 Twp. 9s. Rge. 24w. Co. Graham State KS

Interval Tested 3995-4048 Zone Tested LKC K+L
 Anchor Length 53 Drill Pipe Run 3963 Mud Wt. 9.5
 Top Packer Depth 3990 Drill Collars Run 30 Vis 54
 Bottom Packer Depth 3995 Wt. Pipe Run Ø WL 7.2
 Total Depth 4048 Chlorides 1600 ppm System LCM 2#
 Blow Description IF: Good blow. 1/2" - 8" ISI: No blow
FF: Fair blow, surf. - 5" FSI: No blow

Rec	Feet of	%gas	%oil	%water	%mud
<u>180</u>	<u>GIP</u>	<u>100</u>			
<u>65</u>	<u>Clean gassy oil</u>	<u>20</u>	<u>80</u>		
<u>60</u>	<u>GOCM</u>	<u>5</u>	<u>40</u>	<u>55</u>	
Rec	Feet of	%gas	%oil	%water	%mud
Rec	Feet of	%gas	%oil	%water	%mud

Rec Total 125 BHT 113 Gravity 36 API RW n/c @ n/c °F Chlorides 1600 ppm

(A) Initial Hydrostatic 2043 Test 1250 T-On Location 0745
 (B) First Initial Flow 15 Jars _____ T-Started 0825
 (C) First Final Flow 39 Safety Joint _____ T-Open 1011
 (D) Initial Shut-In 1269 Circ Sub _____ T-Pulled 1311
 (E) Second Initial Flow 40 Hourly Standby _____ T-Out 1512
 (F) Second Final Flow 56 Mileage 176.70 Comments _____
 (G) Final Shut-In 1204 Sampler _____
 (H) Final Hydrostatic 1902 Straddle _____
 Shale Packer _____
 Shale Packer _____
 Extra Packer _____
 Extra Recorder _____
 Day Standby _____
 Accessibility _____

Initial Open 45
 Initial Shut-In 45
 Final Flow 45
 Final Shut-In 45

Sub Total 1326.70 Ruined Shale Packer _____
 Ruined Packer _____
 Extra Copies _____
 Sub Total 0
 Total 1326.70
 MP/DST Disc't _____

Approved By _____ Our Representative Ryan Reynolds
 Trilobite Testing Inc. shall not be liable for damaged of any kind of the property or personnel of the one for whom a test is made, or for any loss suffered or sustained, directly or indirectly, through the use of its equipment, or its statements or opinion concerning the results of any test, tools lost or damaged in the hole shall be paid for at cost by the party for whom the test is made.