



DRILL STEM TEST REPORT

Prepared For: **Cobalt Energy LLC**

PO Box 8037
Wichita KS 67208

ATTN: Mike Maune

Sack Trust"A" #1-24

24-13s-19w Ellis,KS

Start Date: 2014.08.08 @ 16:40:35

End Date: 2014.08.09 @ 00:54:29

Job Ticket #: 58839 DST #: 1

Trilobite Testing, Inc
1515 Commerce Parkway Hays, KS 67601
ph: 785-625-4778 fax: 785-625-5620

Printed: 2014.08.14 @ 11:52:59



**TRILOBITE
TESTING, INC**

DRILL STEM TEST REPORT

Cobalt Energy LLC

24-13s-19w Ellis,KS

PO Box 8037
Wichita KS 67208

Sack Trust"A" #1-24

ATTN: Mike Maune

Job Ticket: 58839

DST#: 1

Test Start: 2014.08.08 @ 16:40:35

GENERAL INFORMATION:

Formation: **Toronto**

Deviated: No Whipstock: ft (KB)

Time Tool Opened: 18:54:00

Time Test Ended: 00:54:29

Test Type: Conventional Bottom Hole (Initial)

Tester: Ray Schwager

Unit No: 70

Interval: 3300.00 ft (KB) To 3344.00 ft (KB) (TVD)

Reference Elevations: 2047.00 ft (KB)

Total Depth: 3344.00 ft (KB) (TVD)

2038.00 ft (CF)

Hole Diameter: 7.85 inches Hole Condition: Fair

KB to GR/CF: 9.00 ft

Serial #: 8018

Inside

Press@RunDepth: 537.63 psig @ 3308.00 ft (KB)

Capacity: 8000.00 psig

Start Date: 2014.08.08

End Date:

2014.08.09

Last Calib.:

2014.08.09

Start Time: 16:40:35

End Time:

00:54:29

Time On Btm:

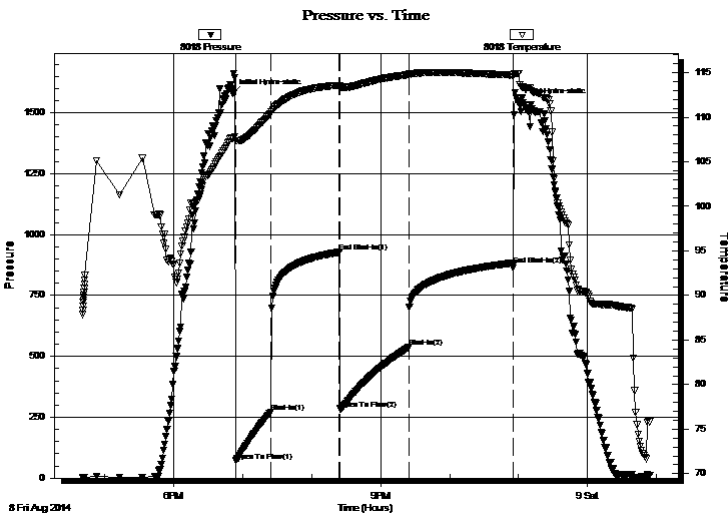
2014.08.08 @ 18:51:30

Time Off Btm:

2014.08.08 @ 22:59:29

TEST COMMENT: 30-IFP-strg bl in 6 min
60-ISIP-no bl
60-FFP-strg bl in 8 min
90-FSIP-no bl

PRESSURE SUMMARY



Time (Min.)	Pressure (psig)	Temp (deg F)	Annotation
0	1578.77	107.65	Initial Hydro-static
3	70.89	107.40	Open To Flow (1)
33	270.23	110.38	Shut-In(1)
93	927.78	113.57	End Shut-In(1)
93	284.99	113.36	Open To Flow (2)
153	537.63	114.76	Shut-In(2)
244	877.19	114.72	End Shut-In(2)
248	1542.71	114.92	Final Hydro-static

Recovery

Length (ft)	Description	Volume (bbl)
190.00	MW 25%M75%W	2.67
1000.00	Water	14.03

Gas Rates

	Choke (inches)	Pressure (psig)	Gas Rate (Mcf/d)



**TRILOBITE
TESTING, INC**

DRILL STEM TEST REPORT

TOOL DIAGRAM

Cobalt Energy LLC

24-13s-19w Ellis,KS

PO Box 8037
Wichita KS 67208

Sack Trust"A" #1-24

Job Ticket: 58839

DST#: 1

ATTN: Mike Maune

Test Start: 2014.08.08 @ 16:40:35

Tool Information

Drill Pipe:	Length: 3286.00 ft	Diameter: 3.80 inches	Volume: 46.09 bbl	Tool Weight: 2200.00 lb
Heavy Wt. Pipe:	Length: 0.00 ft	Diameter: 0.00 inches	Volume: 0.00 bbl	Weight set on Packer: 25000.00 lb
Drill Collar:	Length: 0.00 ft	Diameter: 0.00 inches	Volume: 0.00 bbl	Weight to Pull Loose: 60000.00 lb
			<u>Total Volume: 46.09 bbl</u>	Tool Chased 0.00 ft
Drill Pipe Above KB:	15.00 ft			String Weight: Initial 41000.00 lb
Depth to Top Packer:	3300.00 ft			Final 51000.00 lb
Depth to Bottom Packer:	ft			
Interval between Packers:	44.00 ft			
Tool Length:	73.00 ft			
Number of Packers:	2	Diameter: 6.75 inches		

Tool Comments:

Tool Description

Tool Description	Length (ft)	Serial No.	Position	Depth (ft)	Accum. Lengths
Change Over Sub	1.00			3272.00	
Shut In Tool	5.00			3277.00	
Hydraulic tool	5.00			3282.00	
Jars	5.00			3287.00	
Safety Joint	3.00			3290.00	
Packer	5.00			3295.00	29.00 Bottom Of Top Packer
Packer	5.00			3300.00	
Stubb	1.00			3301.00	
Perforations	7.00			3308.00	
Recorder	0.00	8018	Inside	3308.00	
Recorder	0.00	8700	Outside	3308.00	
Blank Spacing	33.00			3341.00	
Bullnose	3.00			3344.00	44.00 Bottom Packers & Anchor

Total Tool Length: 73.00



**TRILOBITE
TESTING, INC**

DRILL STEM TEST REPORT

FLUID SUMMARY

Cobalt Energy LLC

24-13s-19w Ellis,KS

PO Box 8037
Wichita KS 67208

Sack Trust"A" #1-24

Job Ticket: 58839

DST#: 1

ATTN: Mike Maune

Test Start: 2014.08.08 @ 16:40:35

Mud and Cushion Information

Mud Type: Gel Chem

Cushion Type:

Oil API:

deg API

Mud Weight: 9.00 lb/gal

Cushion Length:

ft

Water Salinity:

63000 ppm

Viscosity: 51.00 sec/qt

Cushion Volume:

bbbl

Water Loss: 8.69 in³

Gas Cushion Type:

Resistivity: ohm.m

Gas Cushion Pressure:

psig

Salinity: 6600.00 ppm

Filter Cake: 1.00 inches

Recovery Information

Recovery Table

Length ft	Description	Volume bbl
190.00	MW 25%M75%W	2.665
1000.00	Water	14.027

Total Length: 1190.00 ft Total Volume: 16.692 bbl

Num Fluid Samples: 0

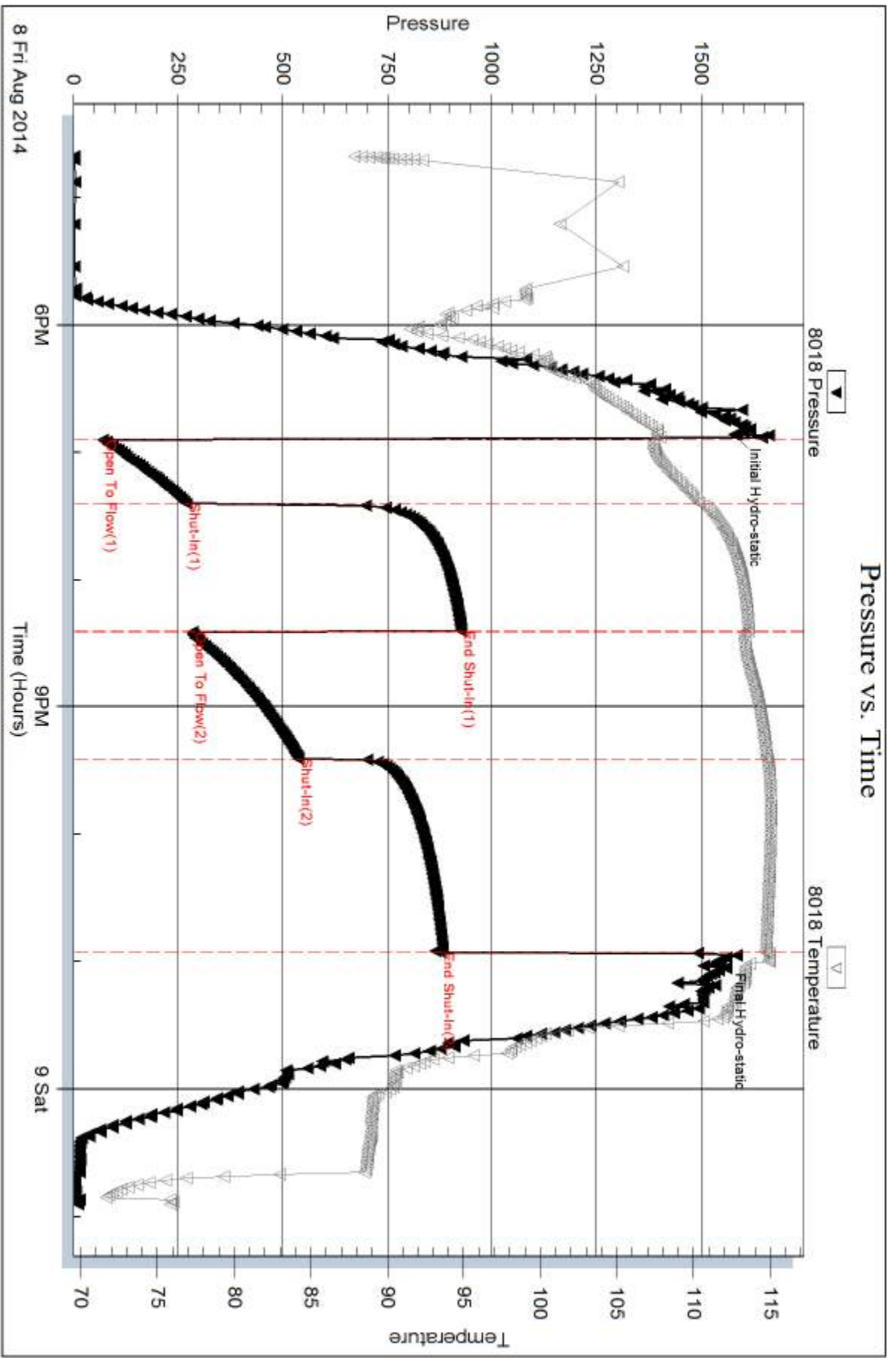
Num Gas Bombs: 0

Serial #:

Laboratory Name:

Laboratory Location:

Recovery Comments: RW .12 @ 70F

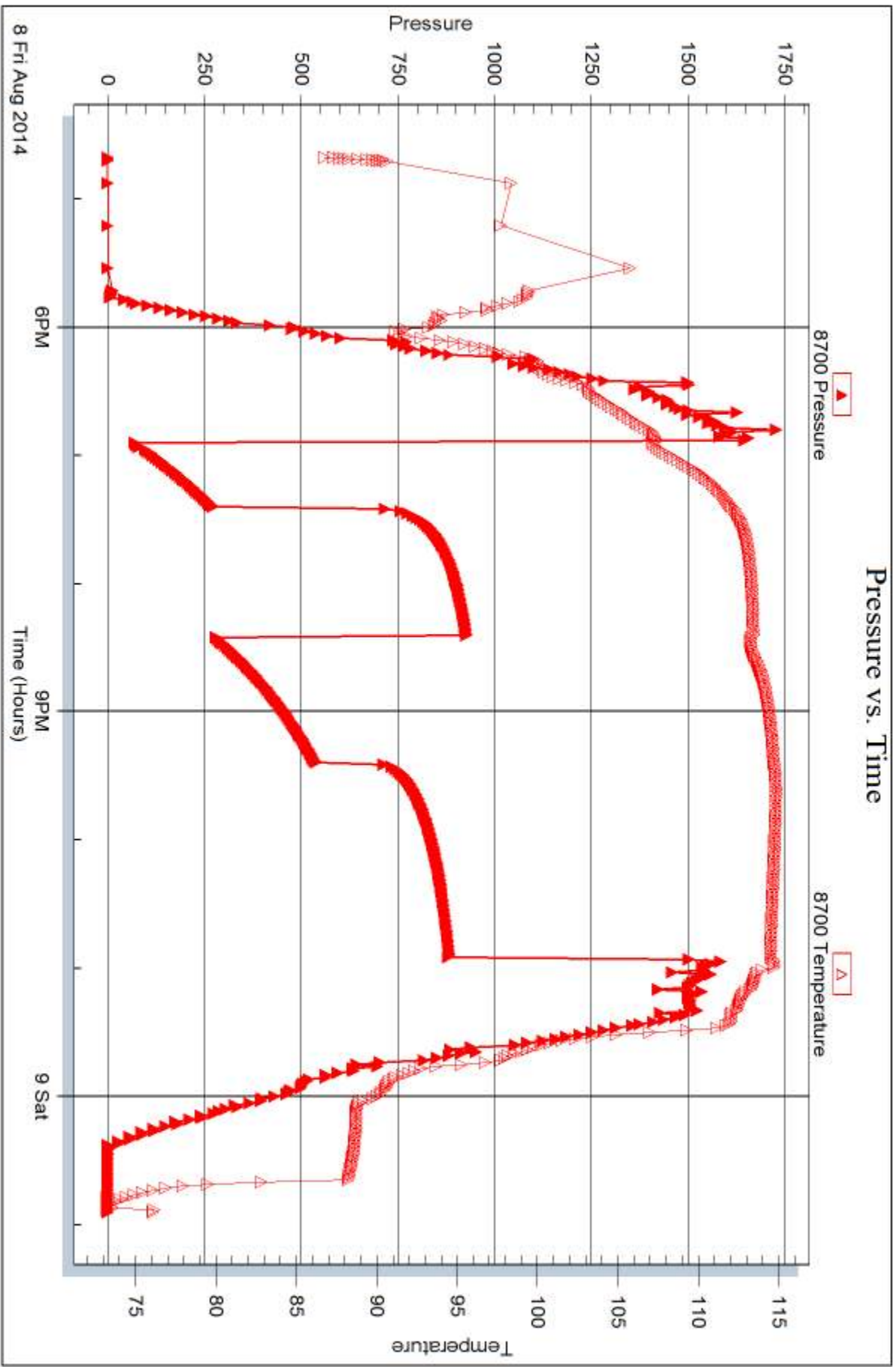


Serial #: 8700

Outside Cobalt Energy LLC

Sack Trust "A" #1-24

DST Test Number: 1



Trilobite Testing, Inc

Ref. No: 58839

Printed: 2014.08.14 @ 11:53:00



DRILL STEM TEST REPORT

Prepared For: **Cobalt Energy LLC**

PO Box 8037
Wichita KS 67208

ATTN: Mike Maune

Sack Trust"A" #1-24

24-13s-19w Ellis,KS

Start Date: 2014.08.09 @ 12:30:32

End Date: 2014.08.09 @ 20:26:56

Job Ticket #: 58840 DST #: 2

Trilobite Testing, Inc
1515 Commerce Parkway Hays, KS 67601
ph: 785-625-4778 fax: 785-625-5620

Printed: 2014.08.14 @ 11:52:39



**TRILOBITE
TESTING, INC**

DRILL STEM TEST REPORT

Cobalt Energy LLC

24-13s-19w Ellis,KS

PO Box 8037
Wichita KS 67208

Sack Trust"A" #1-24

ATTN: Mike Maune

Job Ticket: 58840

DST#: 2

Test Start: 2014.08.09 @ 12:30:32

GENERAL INFORMATION:

Formation: **LKC C-D**

Deviated: No Whipstock: ft (KB)

Time Tool Opened: 14:38:57

Time Test Ended: 20:26:56

Test Type: Conventional Bottom Hole (Reset)

Tester: Ray Schwager

Unit No: 70

Interval: 3362.00 ft (KB) To 3410.00 ft (KB) (TVD)

Reference Elevations: 2047.00 ft (KB)

Total Depth: 3410.00 ft (KB) (TVD)

2038.00 ft (CF)

Hole Diameter: 7.85 inches Hole Condition: Fair

KB to GR/CF: 9.00 ft

Serial #: 8018

Inside

Press@RunDepth: 93.60 psig @ 3364.00 ft (KB)

Capacity: 8000.00 psig

Start Date: 2014.08.09

End Date:

2014.08.09

Last Calib.:

2014.08.09

Start Time: 12:30:32

End Time:

20:26:56

Time On Btm:

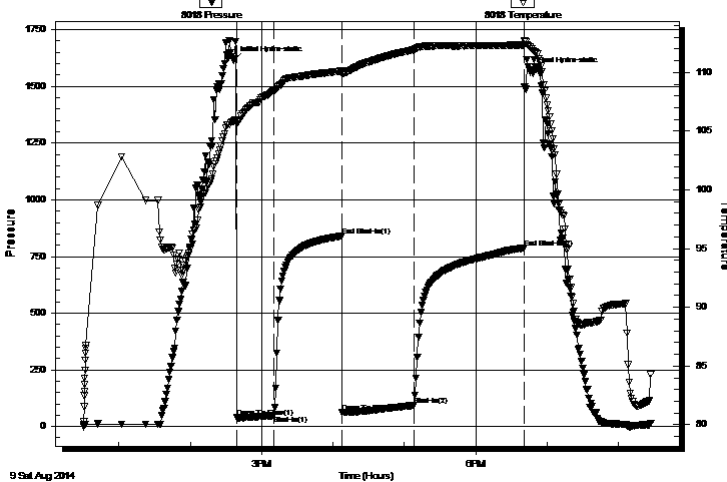
2014.08.09 @ 14:36:27

Time Off Btm:

2014.08.09 @ 18:45:56

TEST COMMENT: 30-IFP-w k to strg in 30 min
60-ISIP-no bl
60-FFP-w k to strg in 28 min
90-FSIP-no bl

Pressure vs. Time



PRESSURE SUMMARY

Time (Min.)	Pressure (psig)	Temp (deg F)	Annotation
0	1615.65	105.83	Initial Hydro-static
3	39.33	105.65	Open To Flow (1)
34	48.85	108.42	Shut-In(1)
91	840.47	110.13	End Shut-In(1)
92	63.85	109.86	Open To Flow (2)
152	93.60	111.94	Shut-In(2)
244	787.78	112.35	End Shut-In(2)
250	1563.46	112.16	Final Hydro-static

Recovery

Length (ft)	Description	Volume (bbl)
0.00	390' GIP	0.00
25.00	CO	0.35
85.00	MGO 10%G35%M55%O	1.19
62.00	OCMW 10%O25%M65%W	0.87

Gas Rates

	Choke (inches)	Pressure (psig)	Gas Rate (Mcf/d)

* Recovery from multiple tests



**TRILOBITE
TESTING, INC**

DRILL STEM TEST REPORT

TOOL DIAGRAM

Cobalt Energy LLC

24-13s-19w Ellis,KS

PO Box 8037
Wichita KS 67208

Sack Trust"A" #1-24

Job Ticket: 58840

DST#: 2

ATTN: Mike Maune

Test Start: 2014.08.09 @ 12:30:32

Tool Information

Drill Pipe:	Length: 3351.00 ft	Diameter: 3.80 inches	Volume: 47.01 bbl	Tool Weight:	2200.00 lb
Heavy Wt. Pipe:	Length: 0.00 ft	Diameter: 0.00 inches	Volume: 0.00 bbl	Weight set on Packer:	25000.00 lb
Drill Collar:	Length: 0.00 ft	Diameter: 0.00 inches	Volume: 0.00 bbl	Weight to Pull Loose:	70000.00 lb
			<u>Total Volume: 47.01 bbl</u>	Tool Chased	0.00 ft
Drill Pipe Above KB:	18.00 ft			String Weight: Initial	44000.00 lb
Depth to Top Packer:	3362.00 ft			Final	48000.00 lb
Depth to Bottom Packer:	ft				
Interval between Packers:	48.00 ft				
Tool Length:	77.00 ft				
Number of Packers:	2	Diameter: 6.75 inches			
Tool Comments:					

Tool Description

Tool Description	Length (ft)	Serial No.	Position	Depth (ft)	Accum. Lengths
Change Over Sub	1.00			3334.00	
Shut In Tool	5.00			3339.00	
Hydraulic tool	5.00			3344.00	
Jars	5.00			3349.00	
Safety Joint	3.00			3352.00	
Packer	5.00			3357.00	29.00 Bottom Of Top Packer
Packer	5.00			3362.00	
Stubb	1.00			3363.00	
Perforations	1.00			3364.00	
Recorder	0.00	8018	Inside	3364.00	
Recorder	0.00	8700	Outside	3364.00	
Blank Spacing	33.00			3397.00	
Perforations	10.00			3407.00	
Bullnose	3.00			3410.00	48.00 Bottom Packers & Anchor

Total Tool Length: 77.00



**TRILOBITE
TESTING, INC**

DRILL STEM TEST REPORT

FLUID SUMMARY

Cobalt Energy LLC

24-13s-19w Ellis,KS

PO Box 8037
Wichita KS 67208

Sack Trust"A" #1-24

Job Ticket: 58840

DST#: 2

ATTN: Mike Maune

Test Start: 2014.08.09 @ 12:30:32

Mud and Cushion Information

Mud Type: Gel Chem
Mud Weight: 9.00 lb/gal
Viscosity: 50.00 sec/qt
Water Loss: 11.88 in³
Resistivity: ohm.m
Salinity: 10100.00 ppm
Filter Cake: 1.00 inches

Cushion Type:
Cushion Length: ft
Cushion Volume: bbl
Gas Cushion Type:
Gas Cushion Pressure: psig

Oil API: 35 deg API
Water Salinity: 74000 ppm

Recovery Information

Recovery Table

Length ft	Description	Volume bbl
0.00	390' GIP	0.000
25.00	CO	0.351
85.00	MGO 10%G35%M55%O	1.192
62.00	OCMW 10%O25%M65%W	0.870

Total Length: 172.00 ft Total Volume: 2.413 bbl

Num Fluid Samples: 0

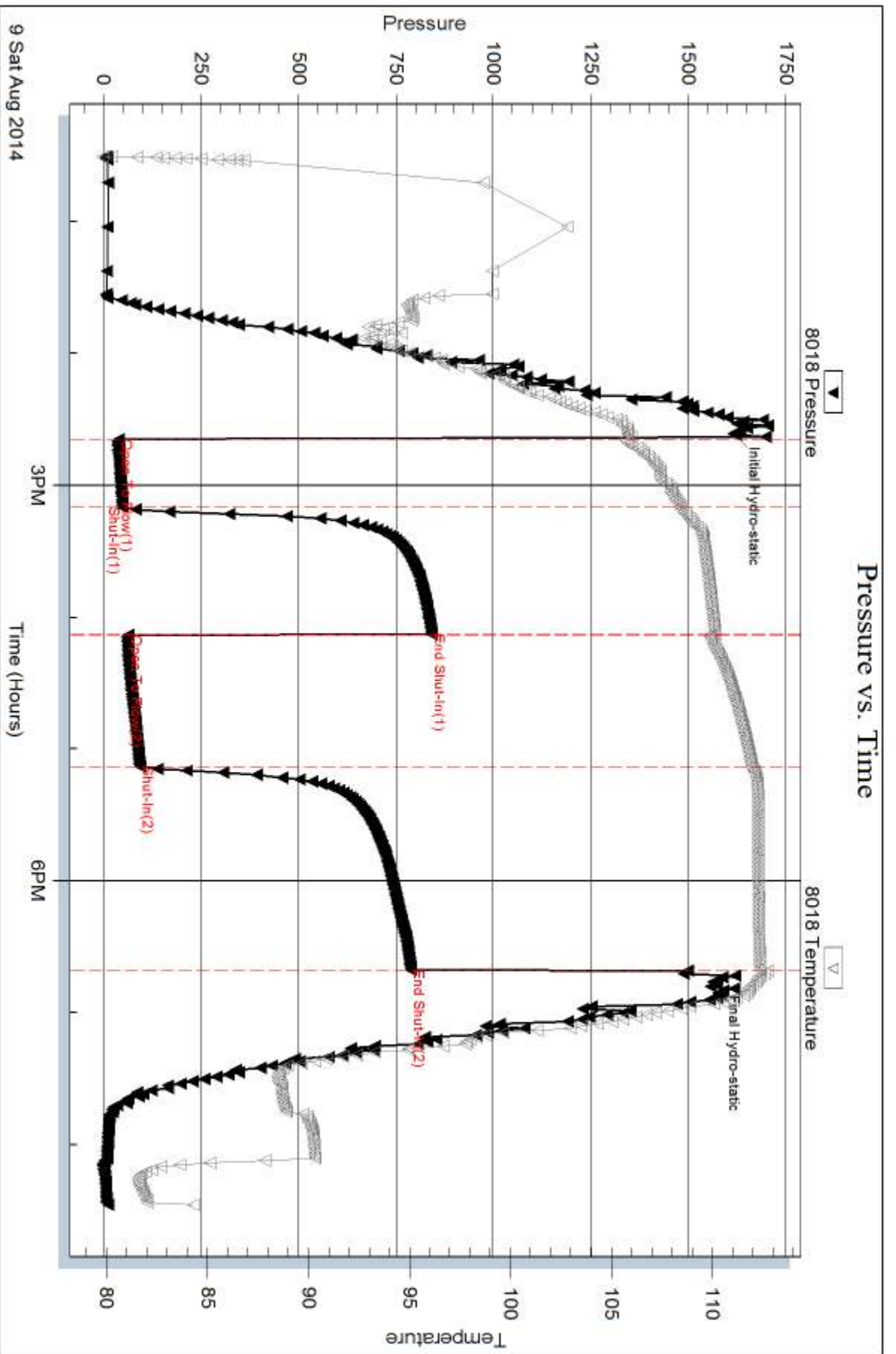
Num Gas Bombs: 0

Serial #:

Laboratory Name:

Laboratory Location:

Recovery Comments: RW .11 @ 75F

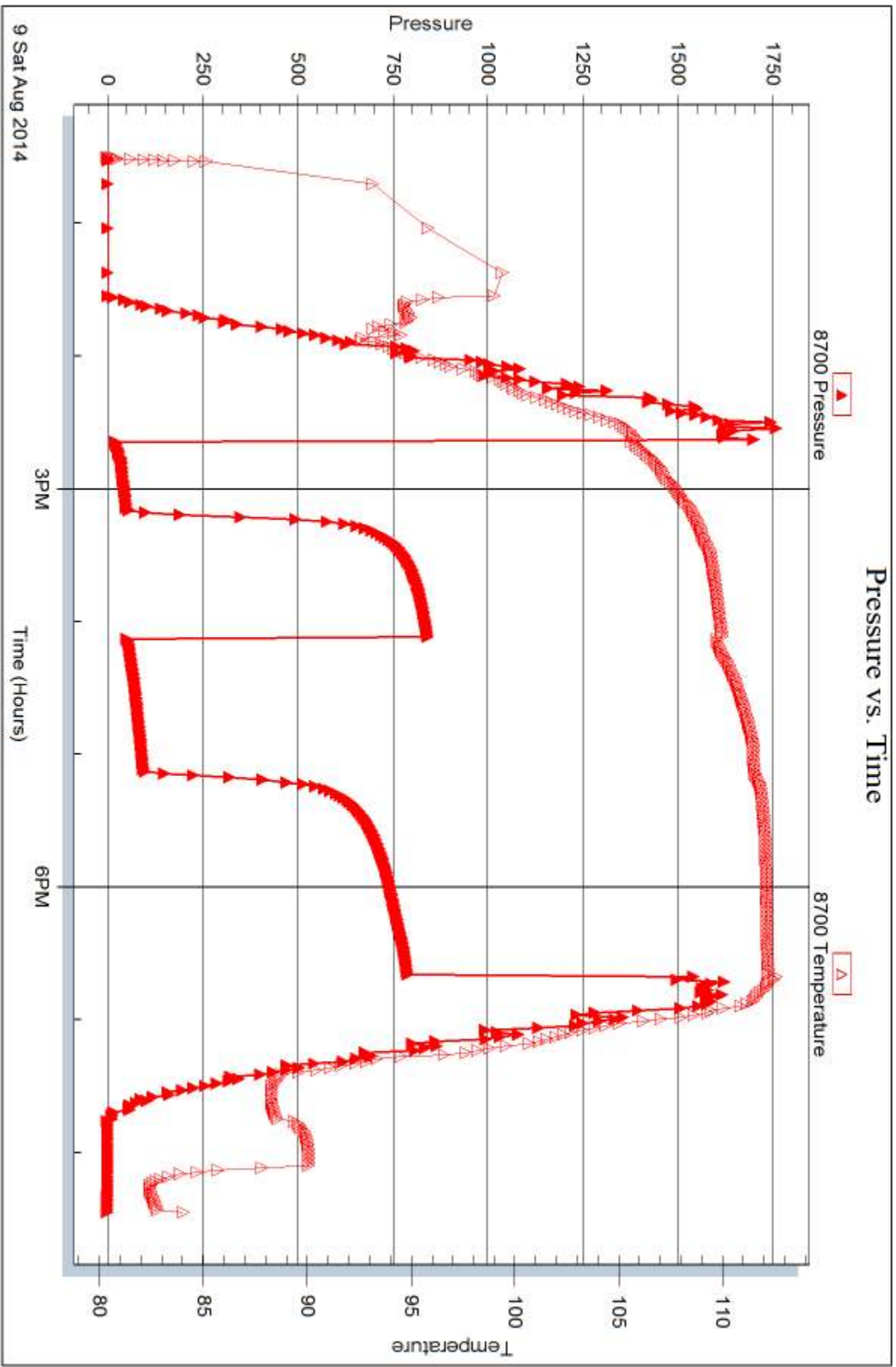


Serial #: 8700

Outside Cobalt Energy LLC

Sack Trust "A" #1-24

DST Test Number: 2



Triobite Testing, Inc

Ref. No: 58840

Printed: 2014.08.14 @ 11:52:40



DRILL STEM TEST REPORT

Prepared For: **Cobalt Energy LLC**

PO Box 8037
Wichita KS 67208

ATTN: Mike Maune

Sack Trust"A" #1-24

24-13s-19w Ellis,KS

Start Date: 2014.08.10 @ 03:55:16

End Date: 2014.08.10 @ 11:58:40

Job Ticket #: 58841 DST #: 3

Trilobite Testing, Inc
1515 Commerce Parkway Hays, KS 67601
ph: 785-625-4778 fax: 785-625-5620

Printed: 2014.08.14 @ 11:52:19



TRILOBITE TESTING, INC

DRILL STEM TEST REPORT

Cobalt Energy LLC

24-13s-19w Ellis,KS

PO Box 8037
Wichita KS 67208

Sack Trust"A" #1-24

Job Ticket: 58841

DST#: 3

ATTN: Mike Maune

Test Start: 2014.08.10 @ 03:55:16

GENERAL INFORMATION:

Formation: **LKC E-F**

Deviated: No Whipstock: ft (KB)

Time Tool Opened: 06:09:11

Time Test Ended: 11:58:40

Test Type: Conventional Bottom Hole (Reset)

Tester: Ray Schwager

Unit No: 70

Interval: 3408.00 ft (KB) To 3440.00 ft (KB) (TVD)

Reference Elevations: 2047.00 ft (KB)

Total Depth: 3440.00 ft (KB) (TVD)

2038.00 ft (CF)

Hole Diameter: 7.85 inches Hole Condition: Fair

KB to GR/CF: 9.00 ft

Serial #: 8018

Inside

Press@RunDepth: 55.09 psig @ 3409.00 ft (KB)

Capacity: 8000.00 psig

Start Date: 2014.08.10

End Date:

2014.08.10

Last Calib.: 2014.08.10

Start Time: 03:55:16

End Time:

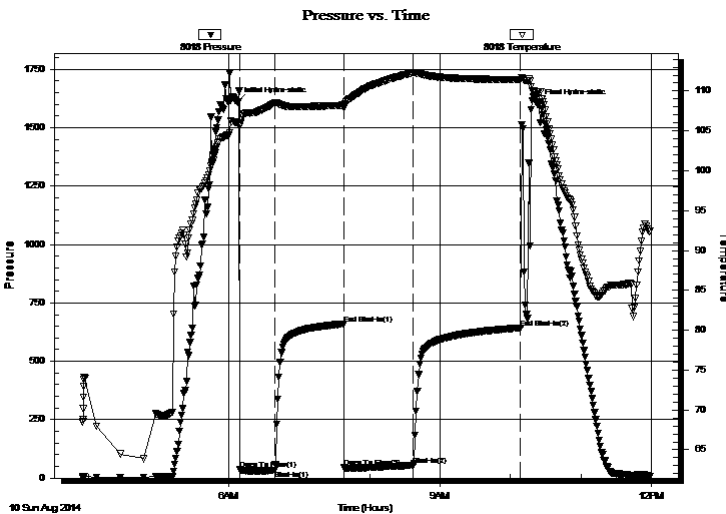
11:58:40

Time On Btm: 2014.08.10 @ 06:07:11

Time Off Btm: 2014.08.10 @ 10:23:40

TEST COMMENT: 30-IFP-w k bl thru-out , 1/4" to 2" bl
60-ISIP-no bl
60-FFP-w k bl thru-out , surface to 1" bl
90-FSIP-no bl

PRESSURE SUMMARY



Time (Min.)	Pressure (psig)	Temp (deg F)	Annotation
0	1610.14	106.00	Initial Hydro-static
2	37.03	105.61	Open To Flow (1)
32	34.26	108.51	Shut-In(1)
91	659.75	108.23	End Shut-In(1)
91	47.35	107.86	Open To Flow (2)
150	55.09	112.32	Shut-In(2)
242	643.14	111.47	End Shut-In(2)
257	1600.63	109.89	Final Hydro-static

Recovery

Length (ft)	Description	Volume (bbl)
5.00	CO	0.07
70.00	MW 20%M80%W w/show of oil	0.98

* Recovery from multiple tests

Gas Rates

Choke (inches)	Pressure (psig)	Gas Rate (Mcf/d)



**TRILOBITE
TESTING, INC**

DRILL STEM TEST REPORT

TOOL DIAGRAM

Cobalt Energy LLC

24-13s-19w Ellis,KS

PO Box 8037
Wichita KS 67208

Sack Trust"A" #1-24

Job Ticket: 58841

DST#: 3

ATTN: Mike Maune

Test Start: 2014.08.10 @ 03:55:16

Tool Information

Drill Pipe:	Length: 3410.00 ft	Diameter: 3.80 inches	Volume: 47.83 bbl	Tool Weight:	2200.00 lb
Heavy Wt. Pipe:	Length: 0.00 ft	Diameter: 0.00 inches	Volume: 0.00 bbl	Weight set on Packer:	25000.00 lb
Drill Collar:	Length: 0.00 ft	Diameter: 0.00 inches	Volume: 0.00 bbl	Weight to Pull Loose:	70000.00 lb
			<u>Total Volume: 47.83 bbl</u>	Tool Chased	0.00 ft
Drill Pipe Above KB:	31.00 ft			String Weight: Initial	44000.00 lb
Depth to Top Packer:	3408.00 ft			Final	44000.00 lb
Depth to Bottom Packer:	ft				
Interval between Packers:	32.00 ft				
Tool Length:	61.00 ft				
Number of Packers:	2	Diameter: 6.75 inches			

Tool Comments:

Tool Description

Tool Description	Length (ft)	Serial No.	Position	Depth (ft)	Accum. Lengths
Change Over Sub	1.00			3380.00	
Shut In Tool	5.00			3385.00	
Hydraulic tool	5.00			3390.00	
Jars	5.00			3395.00	
Safety Joint	3.00			3398.00	
Packer	5.00			3403.00	29.00 Bottom Of Top Packer
Packer	5.00			3408.00	
Stubb	1.00			3409.00	
Recorder	0.00	8018	Inside	3409.00	
Recorder	0.00	8700	Outside	3409.00	
Perforations	28.00			3437.00	
Bullnose	3.00			3440.00	32.00 Bottom Packers & Anchor

Total Tool Length: 61.00



**TRILOBITE
TESTING, INC**

DRILL STEM TEST REPORT

FLUID SUMMARY

Cobalt Energy LLC

24-13s-19w Ellis,KS

PO Box 8037
Wichita KS 67208

Sack Trust"A" #1-24

Job Ticket: 58841

DST#: 3

ATTN: Mike Maune

Test Start: 2014.08.10 @ 03:55:16

Mud and Cushion Information

Mud Type: Gel Chem

Cushion Type:

Oil API:

34 deg API

Mud Weight: 9.00 lb/gal

Cushion Length:

ft

Water Salinity:

53000 ppm

Viscosity: 50.00 sec/qt

Cushion Volume:

bbbl

Water Loss: 11.93 in³

Gas Cushion Type:

Resistivity: ohm.m

Gas Cushion Pressure:

psig

Salinity: 10100.00 ppm

Filter Cake: 1.00 inches

Recovery Information

Recovery Table

Length ft	Description	Volume bbbl
5.00	CO	0.070
70.00	MW 20%M80%W w/show of oil	0.982

Total Length: 75.00 ft Total Volume: 1.052 bbl

Num Fluid Samples: 0

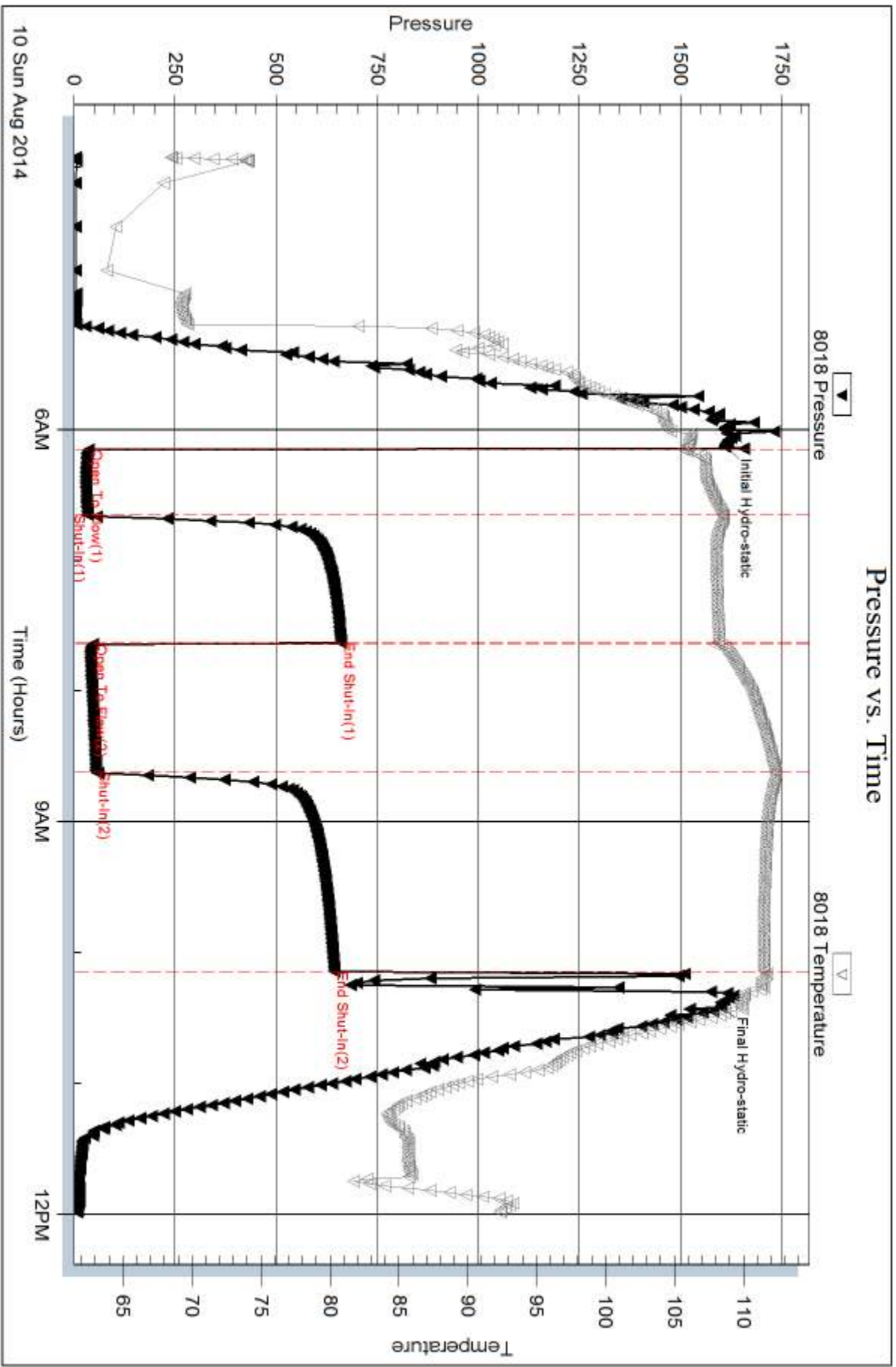
Num Gas Bombs: 0

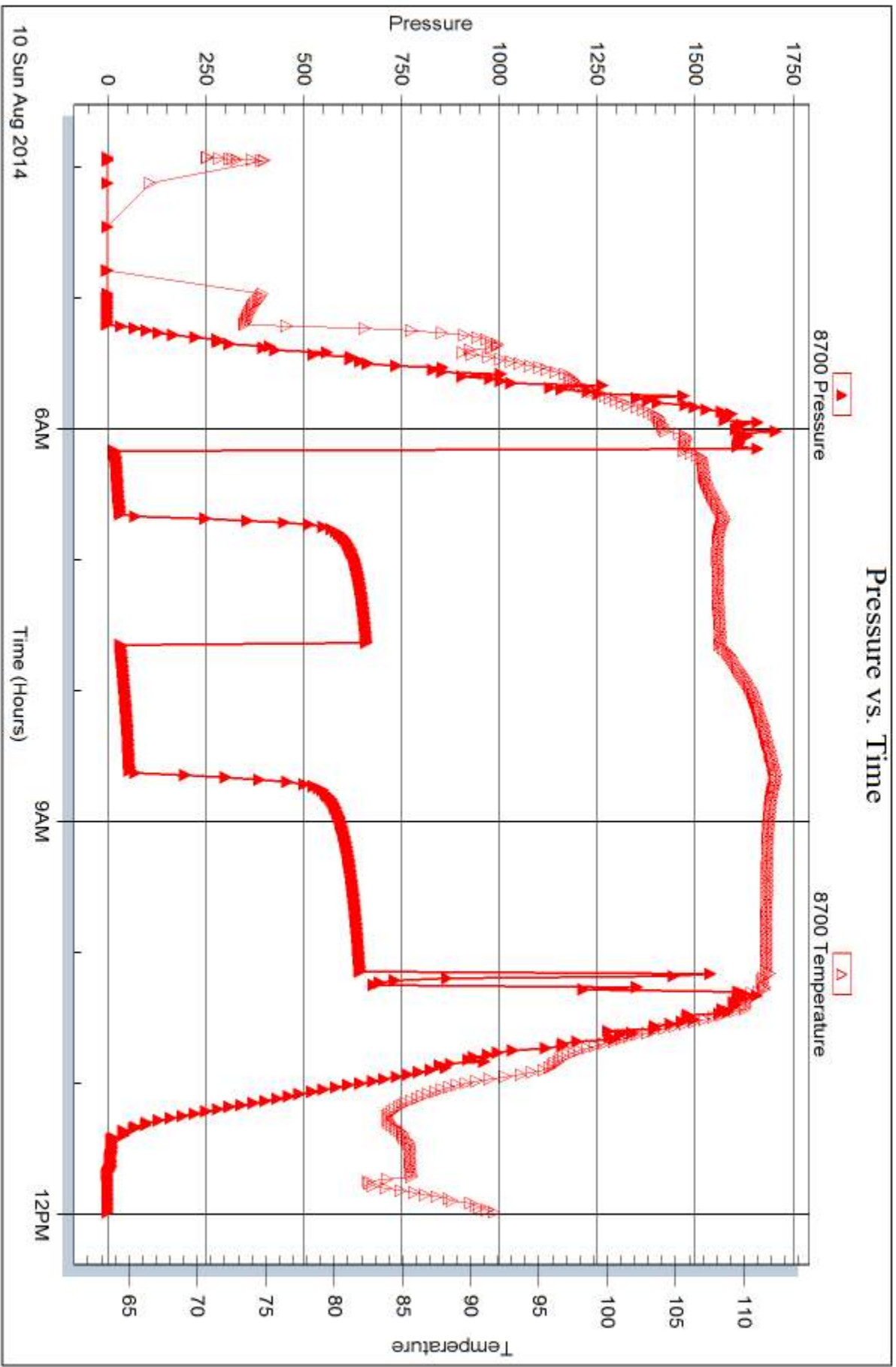
Serial #:

Laboratory Name:

Laboratory Location:

Recovery Comments: RW .15 @ 65F







DRILL STEM TEST REPORT

Prepared For: **Cobalt Energy LLC**

PO Box 8037
Wichita KS 67208

ATTN: Mike Maune

Sack Trust"A" #1-24

24-13s-19w Ellis,KS

Start Date: 2014.08.10 @ 18:18:00

End Date: 2014.08.11 @ 02:14:00

Job Ticket #: 58730 DST #: 4

Trilobite Testing, Inc
1515 Commerce Parkway Hays, KS 67601
ph: 785-625-4778 fax: 785-625-5620

Printed: 2014.08.14 @ 11:51:47



**TRILOBITE
TESTING, INC**

DRILL STEM TEST REPORT

Cobalt Energy LLC

24-13s-19w Ellis,KS

PO Box 8037
Wichita KS 67208

Sack Trust"A" #1-24

ATTN: Mike Maune

Job Ticket: 58730

DST#: 4

Test Start: 2014.08.10 @ 18:18:00

GENERAL INFORMATION:

Formation: **LKC "G"**

Deviated: No Whipstock: ft (KB)

Time Tool Opened: 20:08:30

Time Test Ended: 02:14:00

Test Type: Conventional Bottom Hole (Reset)

Tester: Phillip Gage

Unit No: 70

Interval: 3436.00 ft (KB) To 3460.00 ft (KB) (TVD)

Reference Elevations: 2047.00 ft (KB)

Total Depth: 3460.00 ft (KB) (TVD)

2038.00 ft (CF)

Hole Diameter: 7.85 inches Hole Condition: Fair

KB to GR/CF: 9.00 ft

Serial #: 8700 Outside

Press@RunDepth: 120.18 psig @ 3437.00 ft (KB)

Capacity: 8000.00 psig

Start Date: 2014.08.10

End Date:

2014.08.11

Last Calib.:

2014.08.11

Start Time: 18:18:05

End Time:

02:13:59

Time On Btm:

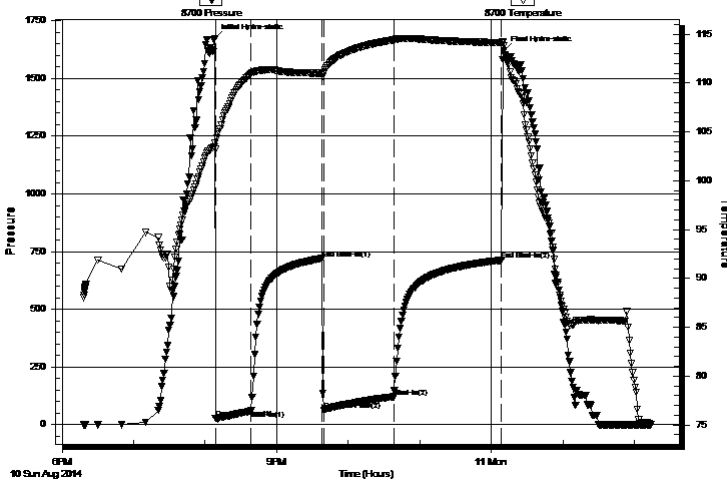
2014.08.10 @ 20:08:00

Time Off Btm:

2014.08.11 @ 00:10:30

TEST COMMENT: 30-IF-BOB in 5 mins
60-ISI-7" Return
60-FF-BOB in 6 mins
90-FSI-8" Return

Pressure vs. Time



PRESSURE SUMMARY

Time (Min.)	Pressure (psig)	Temp (deg F)	Annotation
0	1674.30	103.82	Initial Hydro-static
1	27.01	103.23	Open To Flow (1)
31	61.25	110.99	Shut-In(1)
90	720.10	111.02	End Shut-In(1)
92	62.60	111.02	Open To Flow (2)
150	120.18	114.42	Shut-In(2)
241	712.97	114.14	End Shut-In(2)
243	1620.78	113.86	Final Hydro-static

Recovery

Length (ft)	Description	Volume (bbl)
126.00	SOGWCM, 10%o, 10%g, 30%w, 50%m	1.77
63.00	SWGMC0, 10%w, 10%g, 30%m, 50%o	0.88
66.00	GCO, 50%o, 50%g	0.93
0.00	1005' GIP, 100%g	0.00

Gas Rates

	Choke (inches)	Pressure (psig)	Gas Rate (Mcf/d)

* Recovery from multiple tests



**TRILOBITE
TESTING, INC**

DRILL STEM TEST REPORT

TOOL DIAGRAM

Cobalt Energy LLC

24-13s-19w Ellis,KS

PO Box 8037
Wichita KS 67208

Sack Trust"A" #1-24

Job Ticket: 58730

DST#: 4

ATTN: Mike Maune

Test Start: 2014.08.10 @ 18:18:00

Tool Information

Drill Pipe:	Length: 3414.00 ft	Diameter: 3.80 inches	Volume: 47.89 bbl	Tool Weight:	2200.00 lb
Heavy Wt. Pipe:	Length: 0.00 ft	Diameter: 0.00 inches	Volume: 0.00 bbl	Weight set on Packer:	25000.00 lb
Drill Collar:	Length: 0.00 ft	Diameter: 0.00 inches	Volume: 0.00 bbl	Weight to Pull Loose:	68000.00 lb
			<u>Total Volume: 47.89 bbl</u>	Tool Chased	0.00 ft
Drill Pipe Above KB:	7.00 ft			String Weight: Initial	45000.00 lb
Depth to Top Packer:	3436.00 ft			Final	45000.00 lb
Depth to Bottom Packer:	ft				
Interval between Packers:	24.00 ft				
Tool Length:	53.00 ft				
Number of Packers:	2	Diameter: 6.75 inches			

Tool Comments:

Tool Description

Tool Description	Length (ft)	Serial No.	Position	Depth (ft)	Accum. Lengths
Change Over Sub	1.00			3408.00	
Shut In Tool	5.00			3413.00	
Hydraulic tool	5.00			3418.00	
Jars	5.00			3423.00	
Safety Joint	3.00			3426.00	
Packer	5.00			3431.00	29.00 Bottom Of Top Packer
Packer	5.00			3436.00	
Stubb	1.00			3437.00	
Recorder	0.00	8018	Inside	3437.00	
Recorder	0.00	8700	Outside	3437.00	
Blank Spacing	20.00			3457.00	
Bullnose	3.00			3460.00	24.00 Bottom Packers & Anchor

Total Tool Length: 53.00



**TRILOBITE
TESTING, INC**

DRILL STEM TEST REPORT

FLUID SUMMARY

Cobalt Energy LLC

24-13s-19w Ellis,KS

PO Box 8037
Wichita KS 67208

Sack Trust"A" #1-24

Job Ticket: 58730

DST#: 4

ATTN: Mike Maune

Test Start: 2014.08.10 @ 18:18:00

Mud and Cushion Information

Mud Type: Gel Chem
Mud Weight: 9.00 lb/gal
Viscosity: 48.00 sec/qt
Water Loss: 10.78 in³
Resistivity: ohm.m
Salinity: 9500.00 ppm
Filter Cake: 1.00 inches

Cushion Type:
Cushion Length: ft
Cushion Volume: bbl
Gas Cushion Type:
Gas Cushion Pressure: psig

Oil API: 35 deg API
Water Salinity: ppm

Recovery Information

Recovery Table

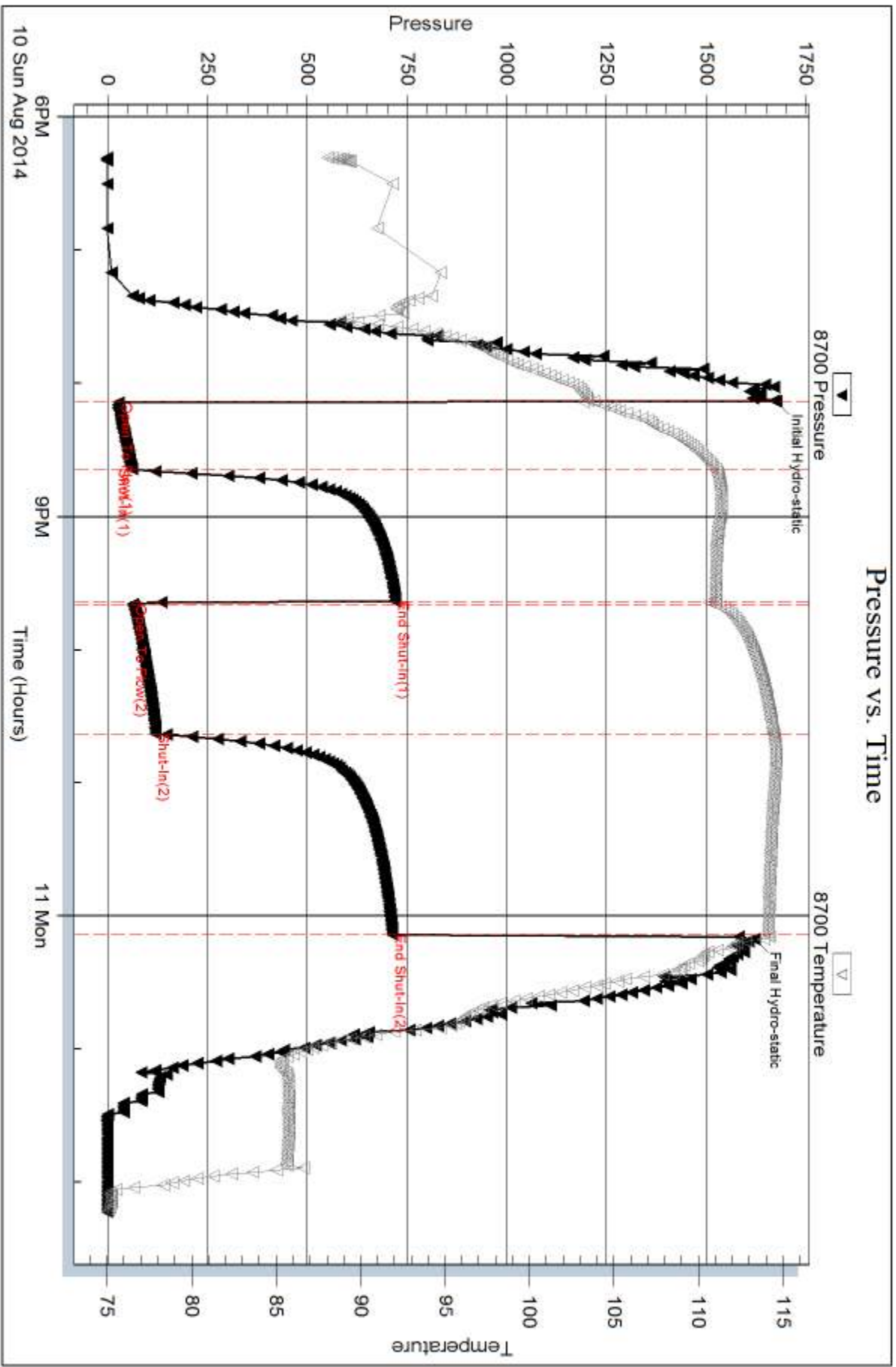
Length ft	Description	Volume bbl
126.00	SOGWCM, 10%o, 10%g, 30%w, 50%m	1.767
63.00	SWGMC0, 10%w, 10%g, 30%m, 50%o	0.884
66.00	GCO, 50%o, 50%g	0.926
0.00	1005' GIP, 100%g	0.000

Total Length: 255.00 ft Total Volume: 3.577 bbl

Num Fluid Samples: 0 Num Gas Bombs: 0 Serial #:

Laboratory Name: Laboratory Location:

Recovery Comments: .17 @ 64 degrees = 19,000 Salinity



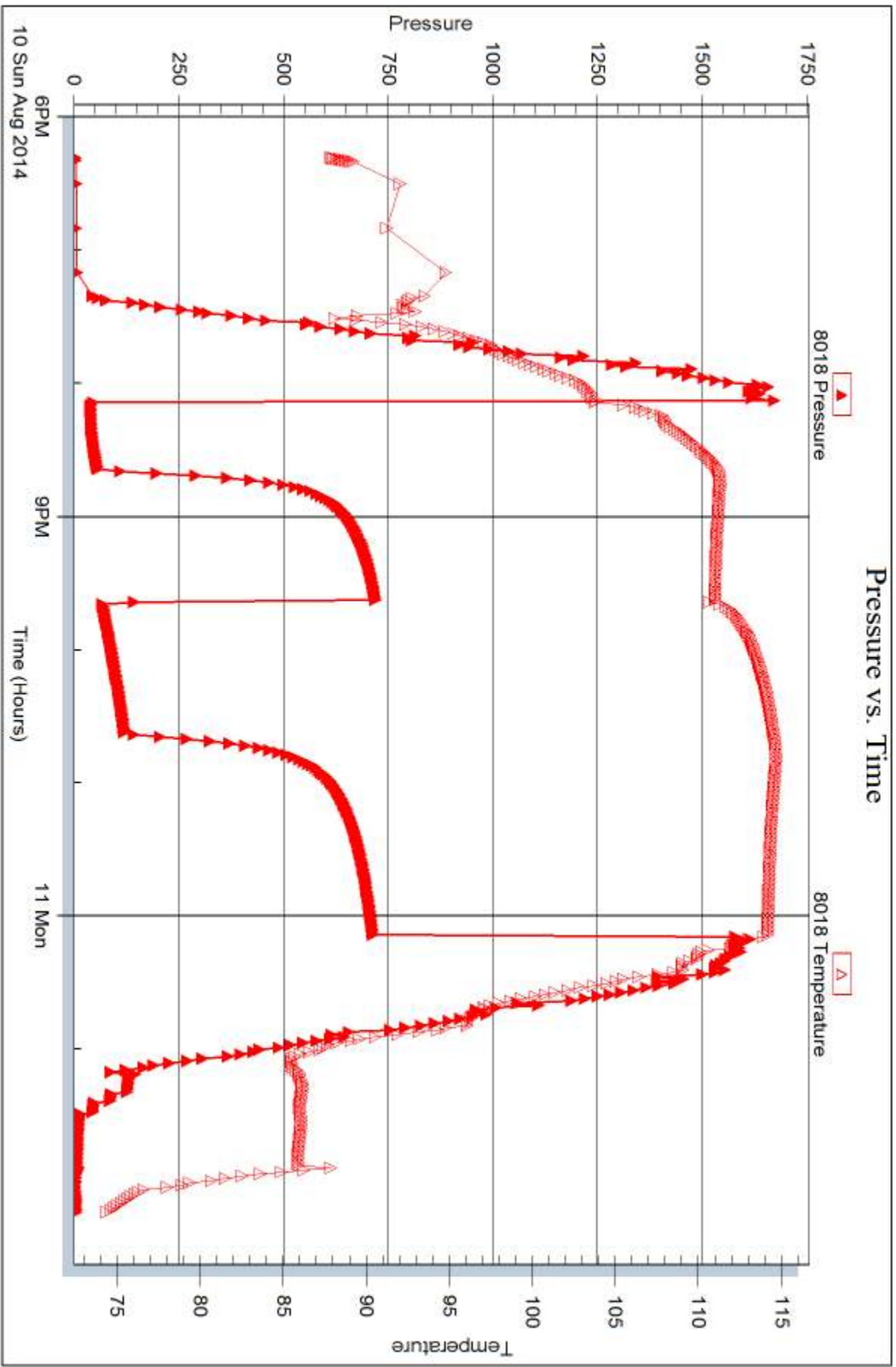
Serial #: 8018

Inside

Cobalt Energy LLC

Sack Trust "A" #1-24

DST Test Number: 4



Trilobite Testing, Inc

Ref. No: 58730

Printed: 2014.08.14 @ 11:51:48



DRILL STEM TEST REPORT

Prepared For: **Cobalt Energy LLC**

PO Box 8037
Wichita KS 67208

ATTN: Mike Maune

Sack Trust"A" #1-24

24-13s-19w Ellis,KS

Start Date: 2014.08.11 @ 16:07:00

End Date: 2014.08.12 @ 01:29:30

Job Ticket #: 58731 DST #: 5

Trilobite Testing, Inc
1515 Commerce Parkway Hays, KS 67601
ph: 785-625-4778 fax: 785-625-5620

Printed: 2014.08.14 @ 11:51:25



**TRILOBITE
TESTING, INC**

DRILL STEM TEST REPORT

Cobalt Energy LLC

24-13s-19w Ellis,KS

PO Box 8037
Wichita KS 67208

Sack Trust"A" #1-24

ATTN: Mike Maune

Job Ticket: 58731

DST#: 5

Test Start: 2014.08.11 @ 16:07:00

GENERAL INFORMATION:

Formation: **LKC "H-J"**
 Deviated: No Whipstock: ft (KB)
 Test Type: Conventional Bottom Hole (Reset)
 Time Tool Opened: 19:10:30
 Tester: Phillip Gage
 Time Test Ended: 01:29:30
 Unit No: 70
 Interval: **3470.00 ft (KB) To 3540.00 ft (KB) (TVD)**
 Reference Elevations: 2047.00 ft (KB)
 Total Depth: 3540.00 ft (KB) (TVD)
 2038.00 ft (CF)
 Hole Diameter: 7.85 inches
 Hole Condition: Fair
 KB to GR/CF: 9.00 ft

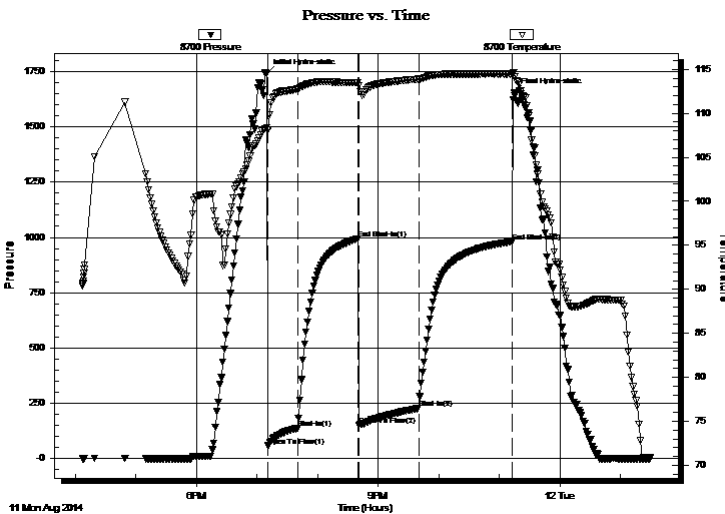
Serial #: 8700

Outside

Press@RunDepth: 226.53 psig @ 3505.00 ft (KB) Capacity: 8000.00 psig
 Start Date: 2014.08.11 End Date: 2014.08.12 Last Calib.: 2014.08.12
 Start Time: 16:07:05 End Time: 01:29:30 Time On Btm: 2014.08.11 @ 19:09:30
 Time Off Btm: 2014.08.11 @ 23:15:00

TEST COMMENT: 30-IF-BOB in 4 mins
 60-ISI-7" Return
 60-FF-BOB in 9 mins
 90-FSI-BOB Return in 18 mins

PRESSURE SUMMARY



Time (Min.)	Pressure (psig)	Temp (deg F)	Annotation
0	1739.97	108.40	Initial Hydro-static
1	57.22	108.13	Open To Flow (1)
31	137.89	112.81	Shut-In(1)
91	994.90	113.46	End Shut-In(1)
92	151.34	113.12	Open To Flow (2)
151	226.53	113.88	Shut-In(2)
244	981.02	114.48	End Shut-In(2)
246	1656.35	114.61	Final Hydro-static

Recovery

Length (ft)	Description	Volume (bbl)
0.00	GIP-693' 100%g	0.00
113.00	GCO, 20%g, 80%o	1.59
96.00	MGO, 20%m, 30%g, 50%o	1.35
315.00	SWGMC0, 10%w, 20%g, 20%m, 50%o	4.42

* Recovery from multiple tests

Gas Rates

	Choke (inches)	Pressure (psig)	Gas Rate (Mcf/d)



**TRILOBITE
TESTING, INC**

DRILL STEM TEST REPORT

TOOL DIAGRAM

Cobalt Energy LLC

24-13s-19w Ellis,KS

PO Box 8037
Wichita KS 67208

Sack Trust"A" #1-24

Job Ticket: 58731

DST#: 5

ATTN: Mike Maune

Test Start: 2014.08.11 @ 16:07:00

Tool Information

Drill Pipe:	Length: 3446.00 ft	Diameter: 3.80 inches	Volume: 48.34 bbl	Tool Weight:	2200.00 lb
Heavy Wt. Pipe:	Length: 0.00 ft	Diameter: 0.00 inches	Volume: 0.00 bbl	Weight set on Packer:	25000.00 lb
Drill Collar:	Length: 0.00 ft	Diameter: 0.00 inches	Volume: 0.00 bbl	Weight to Pull Loose:	66000.00 lb
			<u>Total Volume: 48.34 bbl</u>	Tool Chased	0.00 ft
Drill Pipe Above KB:	5.00 ft			String Weight: Initial	45000.00 lb
Depth to Top Packer:	3470.00 ft			Final	46000.00 lb
Depth to Bottom Packer:	ft				
Interval between Packers:	70.00 ft				
Tool Length:	99.00 ft				
Number of Packers:	2	Diameter: 6.75 inches			
Tool Comments:					

Tool Description

Tool Description	Length (ft)	Serial No.	Position	Depth (ft)	Accum. Lengths
Change Over Sub	1.00			3442.00	
Shut In Tool	5.00			3447.00	
Hydraulic tool	5.00			3452.00	
Jars	5.00			3457.00	
Safety Joint	3.00			3460.00	
Packer	5.00			3465.00	29.00 Bottom Of Top Packer
Packer	5.00			3470.00	
Stubb	1.00			3471.00	
Perforations	33.00			3504.00	
Change Over Sub	1.00			3505.00	
Recorder	0.00	8018	Inside	3505.00	
Recorder	0.00	8700	Outside	3505.00	
Drill Pipe	31.00			3536.00	
Change Over Sub	1.00			3537.00	
Bullnose	3.00			3540.00	70.00 Bottom Packers & Anchor

Total Tool Length: 99.00



**TRILOBITE
TESTING, INC**

DRILL STEM TEST REPORT

FLUID SUMMARY

Cobalt Energy LLC

24-13s-19w Ellis,KS

PO Box 8037
Wichita KS 67208

Sack Trust"A" #1-24

Job Ticket: 58731

DST#: 5

ATTN: Mike Maune

Test Start: 2014.08.11 @ 16:07:00

Mud and Cushion Information

Mud Type: Gel Chem

Cushion Type:

Oil API:

31 deg API

Mud Weight: 9.00 lb/gal

Cushion Length:

ft

Water Salinity:

ppm

Viscosity: 49.00 sec/qt

Cushion Volume:

bbbl

Water Loss: 13.57 in³

Gas Cushion Type:

Resistivity: ohm.m

Gas Cushion Pressure:

psig

Salinity: 9700.00 ppm

Filter Cake: 1.00 inches

Recovery Information

Recovery Table

Length ft	Description	Volume bbbl
0.00	GIP-693' 100%g	0.000
113.00	GCO, 20%g, 80%o	1.585
96.00	MGO, 20%m, 30%g, 50%o	1.347
315.00	SWGMC0, 10%w, 20%g, 20%m, 50%o	4.419

Total Length: 524.00 ft

Total Volume: 7.351 bbl

Num Fluid Samples: 0

Num Gas Bombs: 0

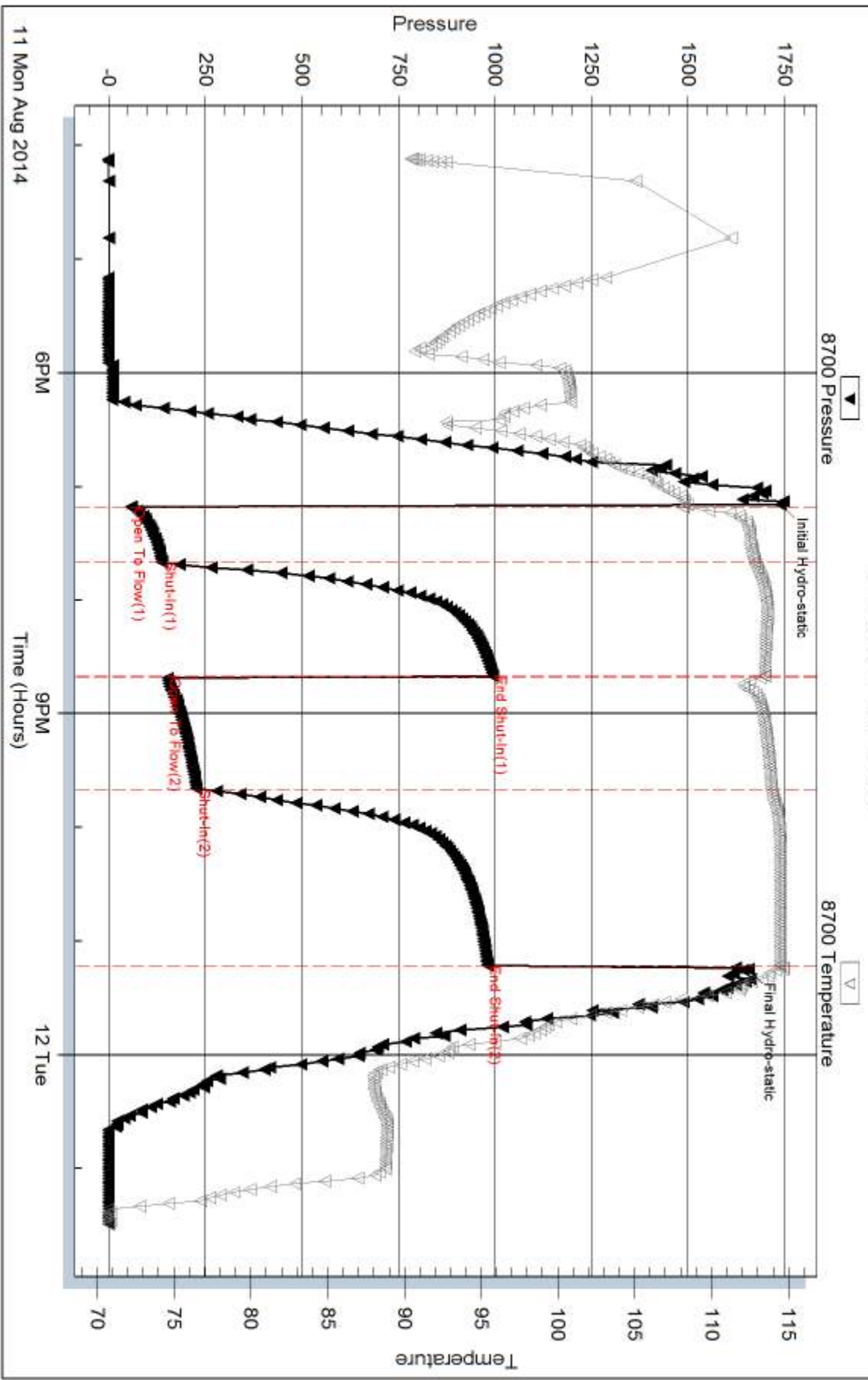
Serial #:

Laboratory Name:

Laboratory Location:

Recovery Comments:

Pressure vs. Time



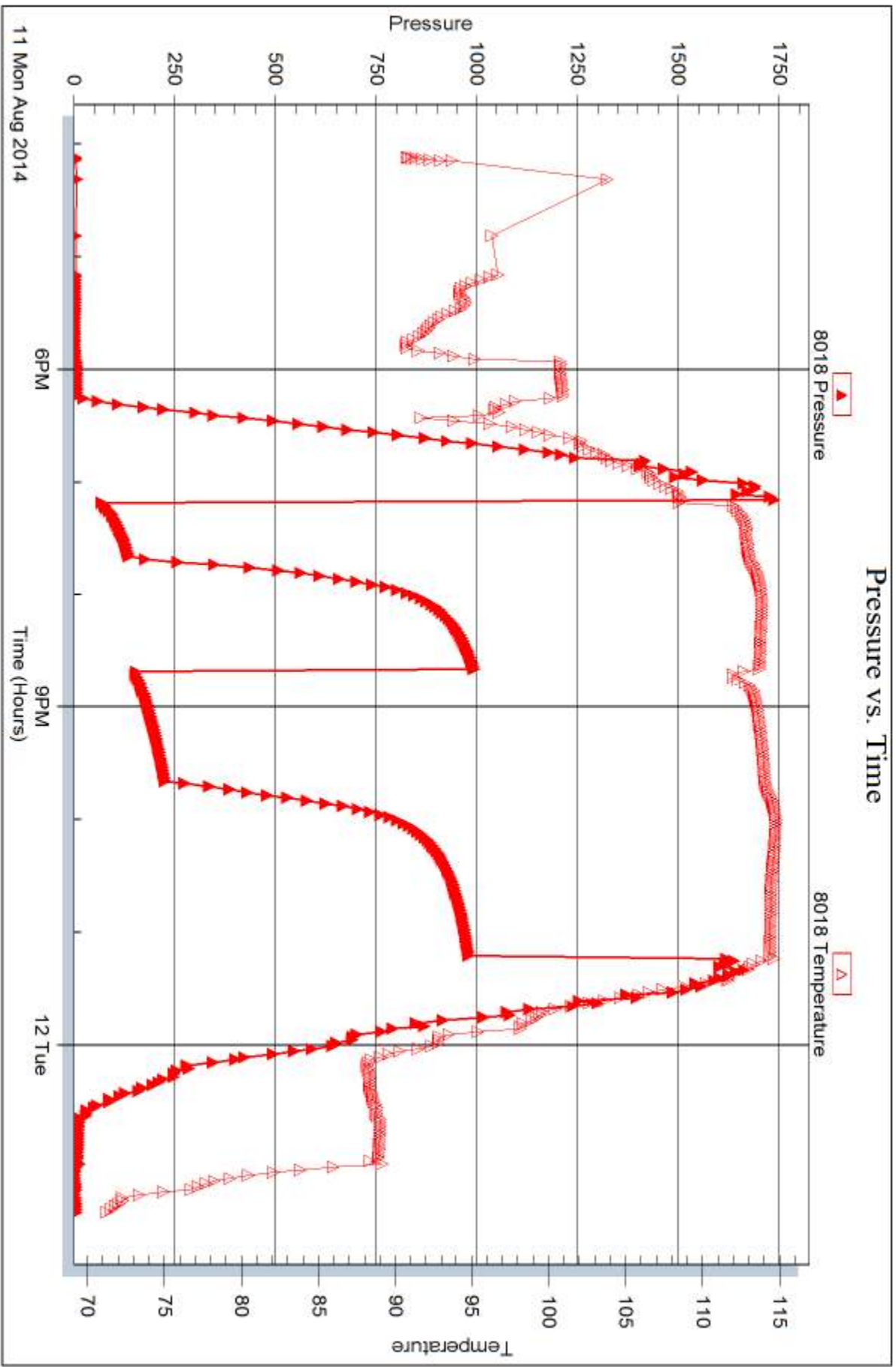
Serial #: 8018

Inside

Cobalt Energy LLC

Sack Trust "A" #1-24

DST Test Number: 5





DRILL STEM TEST REPORT

Prepared For: **Cobalt Energy LLC**

PO Box 8037
Wichita KS 67208

ATTN: Mike Maune

Sack Trust"A" #1-24

24-13s-19w Ellis,KS

Start Date: 2014.08.12 @ 23:16:00

End Date: 2014.08.13 @ 06:55:30

Job Ticket #: 58732 DST #: 6

Trilobite Testing, Inc
1515 Commerce Parkway Hays, KS 67601
ph: 785-625-4778 fax: 785-625-5620

Printed: 2014.08.14 @ 11:50:54



**TRILOBITE
TESTING, INC**

DRILL STEM TEST REPORT

Cobalt Energy LLC

24-13s-19w Ellis,KS

PO Box 8037
Wichita KS 67208

Sack Trust"A" #1-24

ATTN: Mike Maune

Job Ticket: 58732

DST#: 6

Test Start: 2014.08.12 @ 23:16:00

GENERAL INFORMATION:

Formation: **Arbuckle**

Deviated: No Whipstock: ft (KB)

Time Tool Opened: 02:42:00

Time Test Ended: 06:55:30

Test Type: Conventional Bottom Hole (Reset)

Tester: Phillip Gage

Unit No: 70

Interval: 3592.00 ft (KB) To 3703.00 ft (KB) (TVD)

Reference Elevations: 2047.00 ft (KB)

Total Depth: 3703.00 ft (KB) (TVD)

2038.00 ft (CF)

Hole Diameter: 7.85 inches Hole Condition: Fair

KB to GR/CF: 9.00 ft

Serial #: 8700 Outside

Press@RunDepth: 129.45 psig @ 3605.00 ft (KB)

Capacity: 8000.00 psig

Start Date: 2014.08.12

End Date:

2014.08.13

Last Calib.: 2014.08.13

Start Time: 23:16:05

End Time:

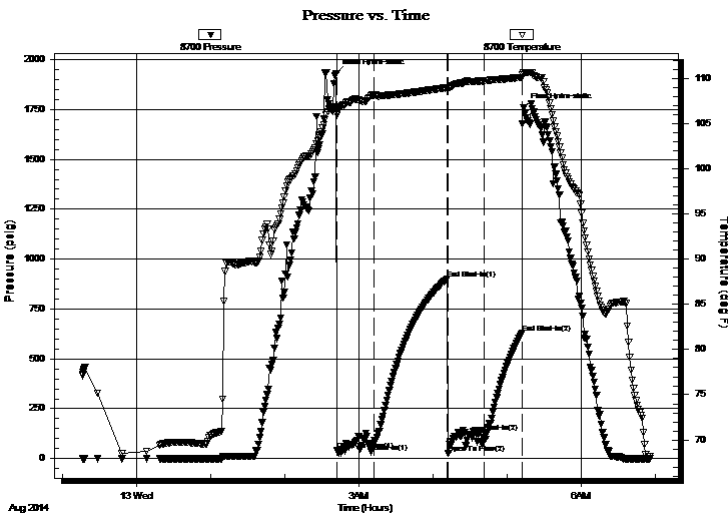
06:55:29

Time On Btm: 2014.08.13 @ 02:41:30

Time Off Btm: 2014.08.13 @ 05:13:30

TEST COMMENT: 30-IF-Built to 1 3/8"
60-ISI-No Return
30-FF-No Blow
30-FSI-No Return

PRESSURE SUMMARY



Time (Min.)	Pressure (psig)	Temp (deg F)	Annotation
0	1929.47	106.50	Initial Hydro-static
1	39.47	105.93	Open To Flow (1)
31	74.43	108.13	Shut-In(1)
90	900.79	108.98	End Shut-In(1)
91	25.50	108.92	Open To Flow (2)
120	129.45	109.74	Shut-In(2)
151	627.95	110.13	End Shut-In(2)
152	1759.18	110.59	Final Hydro-static

Recovery

Length (ft)	Description	Volume (bbl)
20.00	M 100% m, w ith oil spots	0.28

* Recovery from multiple tests

Gas Rates

Choke (inches)	Pressure (psig)	Gas Rate (Mcf/d)



**TRILOBITE
TESTING, INC**

DRILL STEM TEST REPORT

TOOL DIAGRAM

Cobalt Energy LLC

24-13s-19w Ellis,KS

PO Box 8037
Wichita KS 67208

Sack Trust"A" #1-24

Job Ticket: 58732

DST#: 6

ATTN: Mike Maune

Test Start: 2014.08.12 @ 23:16:00

Tool Information

Drill Pipe:	Length: 3572.00 ft	Diameter: 3.80 inches	Volume: 50.11 bbl	Tool Weight: 2200.00 lb
Heavy Wt. Pipe:	Length: 0.00 ft	Diameter: 0.00 inches	Volume: 0.00 bbl	Weight set on Packer: 25000.00 lb
Drill Collar:	Length: 0.00 ft	Diameter: 0.00 inches	Volume: 0.00 bbl	Weight to Pull Loose: 54000.00 lb
			<u>Total Volume: 50.11 bbl</u>	Tool Chased 0.00 ft
Drill Pipe Above KB:	9.00 ft			String Weight: Initial 44000.00 lb
Depth to Top Packer:	3592.00 ft			Final 46000.00 lb
Depth to Bottom Packer:	ft			
Interval between Packers:	111.00 ft			
Tool Length:	140.00 ft			
Number of Packers:	2	Diameter: 6.75 inches		

Tool Comments:

Tool Description

Tool Description	Length (ft)	Serial No.	Position	Depth (ft)	Accum. Lengths
Change Over Sub	1.00			3564.00	
Shut In Tool	5.00			3569.00	
Hydraulic tool	5.00			3574.00	
Jars	5.00			3579.00	
Safety Joint	3.00			3582.00	
Packer	5.00			3587.00	29.00 Bottom Of Top Packer
Packer	5.00			3592.00	
Stubb	1.00			3593.00	
Perforations	11.00			3604.00	
Change Over Sub	1.00			3605.00	
Recorder	0.00	8018	Inside	3605.00	
Recorder	0.00	8700	Outside	3605.00	
Drill Pipe	94.00			3699.00	
Change Over Sub	1.00			3700.00	
Bullnose	3.00			3703.00	111.00 Bottom Packers & Anchor

Total Tool Length: 140.00



**TRILOBITE
TESTING, INC**

DRILL STEM TEST REPORT

FLUID SUMMARY

Cobalt Energy LLC

24-13s-19w Ellis,KS

PO Box 8037
Wichita KS 67208

Sack Trust"A" #1-24

Job Ticket: 58732

DST#: 6

ATTN: Mike Maune

Test Start: 2014.08.12 @ 23:16:00

Mud and Cushion Information

Mud Type: Gel Chem

Cushion Type:

Oil API:

deg API

Mud Weight: 9.00 lb/gal

Cushion Length:

ft

Water Salinity:

ppm

Viscosity: 55.00 sec/qt

Cushion Volume:

bbbl

Water Loss: 9.99 in³

Gas Cushion Type:

Resistivity: ohm.m

Gas Cushion Pressure:

psig

Salinity: 8900.00 ppm

Filter Cake: 1.00 inches

Recovery Information

Recovery Table

Length ft	Description	Volume bbl
20.00	M 100%m, w ith oil spots	0.281

Total Length: 20.00 ft Total Volume: 0.281 bbl

Num Fluid Samples: 0

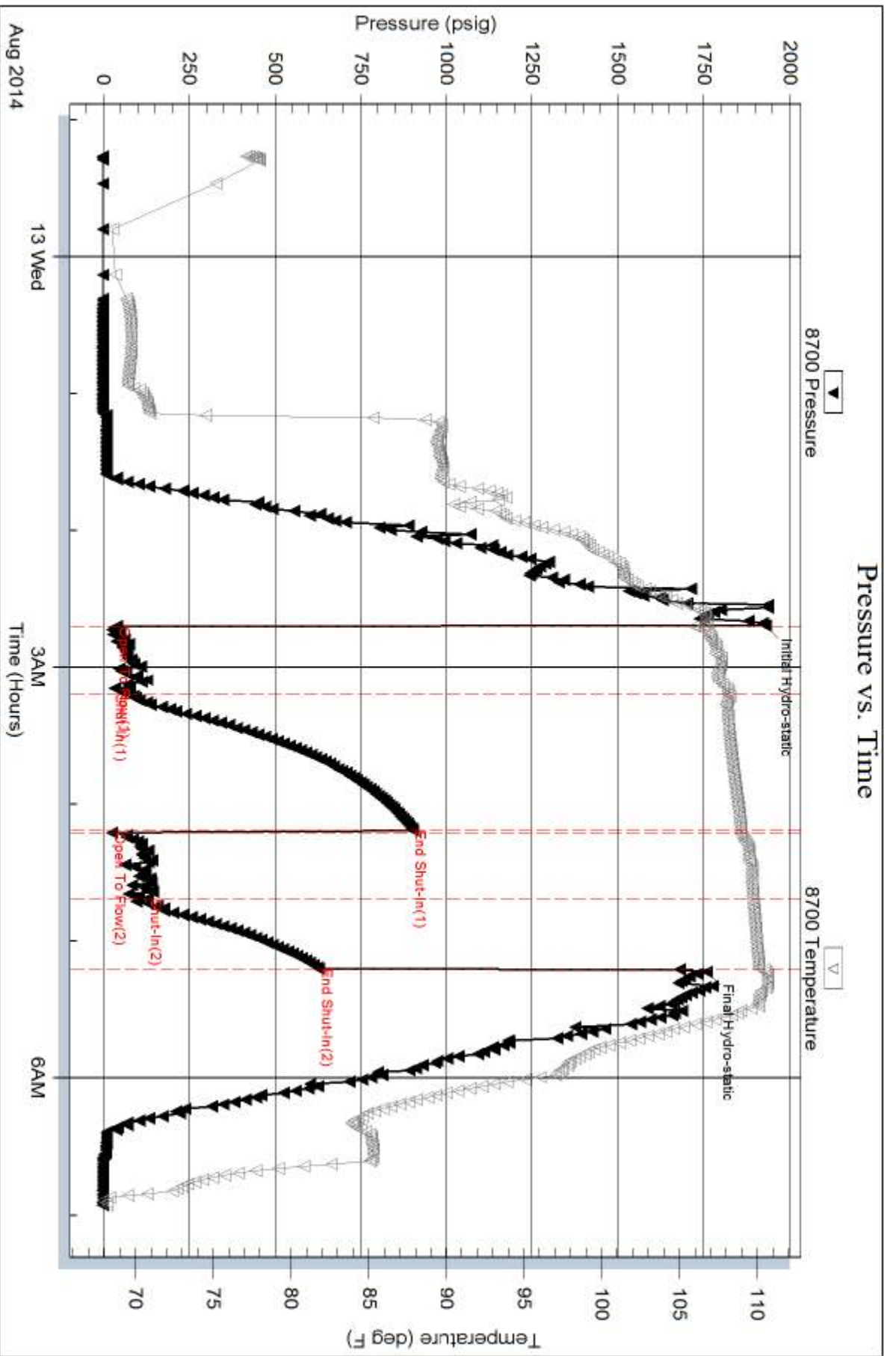
Num Gas Bombs: 0

Serial #:

Laboratory Name:

Laboratory Location:

Recovery Comments:



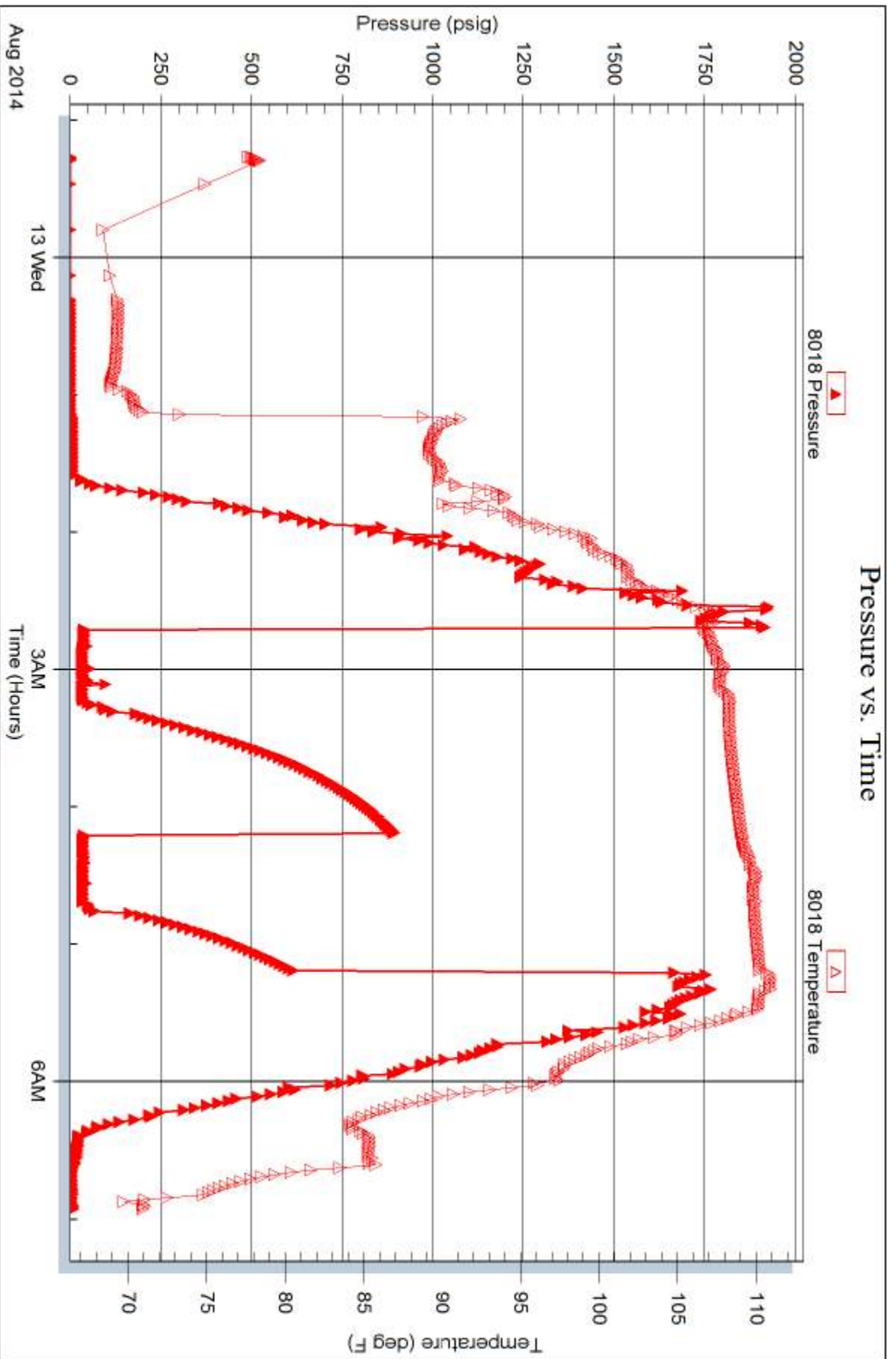
Serial #: 8018

Inside

Cobalt Energy LLC

Sack Trust "A" #1-24

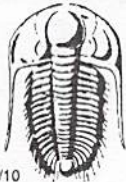
DST Test Number: 6



Trilobite Testing, Inc

Ref. No: 58732

Printed: 2014.08.14 @ 11:50:56



TRILOBITE TESTING INC.

1515 Commerce Parkway • Hays, Kansas 67601

Test Ticket

NO. 58839

Well Name & No. SACK TRUST "A" #1-24 Test No. 1 Date 8-8-14
 Company COBALT Energy LLC Elevation 2047 KB 2038 GL
 Address 115 S. Belmont #12 PO Box 8037 WICHITA KS 67208
 Co. Rep / Geo. MIKE MAUNE Rig Southwind rig 8
 Location: Sec. 24 Twp. 13^s Rge. 19^w Co. ELLIS State Ks

Interval Tested 3300-3344 Zone Tested TORONTO
 Anchor Length 44 Drill Pipe Run 3286 Mud Wt. 9.1
 Top Packer Depth 3295 Drill Collars Run - Vis 51
 Bottom Packer Depth 3300 Wt. Pipe Run - WL 8.8
 Total Depth 3344 Chlorides 6600 ppm System LCM YR.

Blow Description IFP - STRONG BLOW IN 6 MIN
ISIP - NO BLOW
FFP - STRONG BLOW IN 8 MIN
FSIP - NO BLOW

Rec	Feet of	%gas	%oil	%water	%mud
<u>190</u>	<u>MW</u>			<u>75</u>	<u>25</u>
<u>1000</u>	<u>WATER</u>				

Rec Total 1190 BHT 114 Gravity - API RW .12 @ 70 ° F Chlorides 63000 ppm
 (A) Initial Hydrostatic 1578 Test 1150 T-On Location 1400
 (B) First Initial Flow 70 Jars 250 T-Started 1640
 (C) First Final Flow 270 Safety Joint 75 T-Open 1850
 (D) Initial Shut-In 927 Circ Sub _____ T-Pulled 2250
 (E) Second Initial Flow 284 Hourly Standby _____ T-Out 0054
 (F) Second Final Flow 537 Mileage 15RT 23.25 Comments _____
 (G) Final Shut-In 877 Sampler _____
 (H) Final Hydrostatic 1542 Straddle _____ Ruined Shale Packer _____
 Shale Packer _____ Ruined Packer _____
 Extra Packer _____ Extra Copies _____

Initial Open 30
 Initial Shut-In 60
 Final Flow 60
 Final Shut-In 90
 Sub Total 1498.25
 Total 1498.25
 MP/DST Disc't _____

Approved By _____ Our Representative RAY SCHWAGER Thank you

Trilobite Testing Inc. shall not be liable for damaged of any kind of the property or personnel of the one for whom a test is made, or for any loss suffered or sustained, directly or indirectly, through the use of its equipment, or its statements or opinion concerning the results of any test, tools lost or damaged in the hole shall be paid for at cost by the party for whom the test is made.



TRILOBITE TESTING INC.

1515 Commerce Parkway • Hays, Kansas 67601

Test Ticket

NO. 58840

Well Name & No. Sack Trust "A" #1-24 Test No. 2 Date 8-9-14
 Company Cobalt Energy LLC Elevation 2047 KB 2038 GL
 Address 115 S. Belmont #12, PO Box 8037 Wichita, KS 67208
 Co. Rep / Geo. Mike Maune Rig Southwind rig 8
 Location: Sec. 24 Twp. 13^s Rge. 19^w Co. Ellis State Ks

Interval Tested 3362-3410 Zone Tested LKC C-0
 Anchor Length 48 Drill Pipe Run 3351 Mud Wt. 9.2
 Top Packer Depth 3357 Drill Collars Run - Vis 50
 Bottom Packer Depth 3362 Wt. Pipe Run - WL 12
 Total Depth 3410 Chlorides 10100 ppm System LCM TR

Blow Description IFP - WEAK TO STRONG IN 30 MIN
ISTIP - NO BLOW
FFP - WEAK TO STRONG IN 28 MIN
FSTIP - NO BLOW

Rec	Feet of	%gas	%oil	%water	%mud
<u>390</u>	<u>GIP</u>				
<u>25</u>	<u>CO</u>				
<u>85</u>	<u>MGO</u>	<u>10</u>	<u>55</u>		<u>35</u>
<u>62</u>	<u>OCMW</u>		<u>10</u>	<u>65</u>	<u>25</u>

Rec Total 172 BHT 112 Gravity 35 API RW .11 @ 75 ° F Chlorides 74000 ppm

(A) Initial Hydrostatic 1615 Test 1150 T-On Location 1135
 (B) First Initial Flow 39 Jars 250 T-Started 1230
 (C) First Final Flow 48 Safety Joint 75 T-Open 1440
 (D) Initial Shut-In 840 Circ Sub _____ T-Pulled 1840
 (E) Second Initial Flow 63 Hourly Standby _____ T-Out 2026
 (F) Second Final Flow 93 Mileage 15 RT 23.25 Comments _____
 (G) Final Shut-In 787 Sampler _____
 (H) Final Hydrostatic 1563 Straddle _____ Ruined Shale Packer _____
 Shale Packer _____ Ruined Packer _____
 Extra Packer _____ Extra Copies _____
 Extra Recorder _____

Initial Open 30
 Initial Shut-In 60
 Final Flow 60
 Final Shut-In 90

Sub Total 1498.25
 Total 1498.25
 MP/DST Disc't _____

Approved By _____ Our Representative RAY SCHWAGER *Thank you*

Trilobite Testing Inc. shall not be liable for damaged of any kind of the property or personnel of the one for whom a test is made, or for any loss suffered or sustained, directly or indirectly, through the use of its equipment, or its statements or opinion concerning the results of any test, tools lost or damaged in the hole shall be paid for at cost by the party for whom the test is made.



TRILOBITE TESTING INC.

1515 Commerce Parkway • Hays, Kansas 67601

Test Ticket

NO. 58841

Well Name & No. SACK TRUST "A" #1-24 Test No. 3 Date 8-10-14
 Company Cobalt Energy LLC Elevation 2047 KB 2038 GL
 Address 115 S. Belmont #12 PO Box 8037 Wichita, KS 67208
 Co. Rep / Geo. MIKE MAUNE Rig Southernwindrig 8
 Location: Sec. 24 Twp. 13^s Rge. 19^w Co. ELLIS State Ks

Interval Tested 3408-3440 Zone Tested LKC E-F
 Anchor Length 32 Drill Pipe Run 3410 Mud Wt. 9
 Top Packer Depth 3403 Drill Collars Run - Vis 50
 Bottom Packer Depth 3408 Wt. Pipe Run - WL 12
 Total Depth 3440 Chlorides 10100 ppm System LCM TR

Blow Description IFP - WEAK BLOW THRU-OUT 1/4" TO 2" BLOW
ISIP - NO BLOW
FFP - WEAK BLOW THRU-OUT, SURFACE TO 1" BLOW
FSIP - NO BLOW

Rec	Feet of	%gas	%oil	%water	%mud
<u>5</u>	<u>CO</u>				
<u>70</u>	<u>MW w/show of oil</u>		<u>80</u>	<u>20</u>	
Rec Total	<u>75</u>				

BHT III Gravity - API RW .15 @ 65 ° F Chlorides 53000 ppm
 (A) Initial Hydrostatic 1610 Test 1150 T-On Location 0340
 (B) First Initial Flow 37 Jars 250 T-Started 0355
 (C) First Final Flow 34 Safety Joint 75 T-Open 0610
 (D) Initial Shut-In 659 Circ Sub _____ T-Pulled 0010
 (E) Second Initial Flow 47 Hourly Standby _____ T-Out 0158
 (F) Second Final Flow 59 Mileage ISRT 23.25 Comments _____
 (G) Final Shut-In 643 Sampler _____
 (H) Final Hydrostatic 1600 Straddle _____ Ruined Shale Packer _____
 Shale Packer _____ Ruined Packer _____

Initial Open 30 Extra Packer _____ Extra Copies _____
 Initial Shut-In 60 Extra Recorder _____ Sub Total 0
 Final Flow 60 Day Standby _____ Total 1498.25
 Final Shut-In 90 Accessibility _____ MP/DST Disc't _____
 Sub Total 1498.25

Approved By _____ Our Representative RAY SCHWAGER Thank you

Trilobite Testing Inc. shall not be liable for damaged of any kind of the property or personnel of the one for whom a test is made, or for any loss suffered or sustained, directly or indirectly, through the use of its equipment, or its statements or opinion concerning the results of any test, tools lost or damaged in the hole shall be paid for at cost by the party for whom the test is made.



TRILOBITE TESTING INC.

1515 Commerce Parkway • Hays, Kansas 67601

Test Ticket

NO. 58730

4/10

Well Name & No. Sack Trust "A" #1-24 Test No. 4 Date 8-10-14
 Company Cobalt Energy LLC Elevation 2047 KB 2038 GL
 Address 115 S. Belmont #12 P.O. Box 8037 Wichita, KS 67208
 Co. Rep / Geo. Mike Maune Rig Southwind Rig 8
 Location: Sec. 24 Twp. 13s Rge. 19w Co. Ellis State KS

Interval Tested 3436-3460 Zone Tested LKL "G"
 Anchor Length 24' Drill Pipe Run 3414 Mud Wt. 9.1
 Top Packer Depth 3431 Drill Collars Run — Vis 48
 Bottom Packer Depth 3436 Wt. Pipe Run — WL 10.8
 Total Depth 3460 Chlorides 9,500 ppm System LCM Tr

Blow Description IF- BOB in 5 mhs
ISI- 7" Return
FF- BOB in 6 mhs
FSI- 8" Return

Rec	Feet of	%gas	%oil	%water	%mud
126	SOGWCM	10%	10%	30%	50%
63	SWOMCO	10%	50%	10%	30%
66	BCO	50%	50%		
0	GIP 1005'	100%			

Rec Total 255 BHT 113 Gravity 35 API RW 117 @ 64 °F Chlorides 19,000 ppm

(A) Initial Hydrostatic 1674 Test 1150 T-On Location 18.17
 (B) First Initial Flow 27 Jars 250 T-Started 18.18
 (C) First Final Flow 61 Safety Joint 75 T-Open 20:09
 (D) Initial Shut-In 720 Circ Sub _____ T-Pulled 00:09
 (E) Second Initial Flow 62 Hourly Standby _____ T-Out 02:15
 (F) Second Final Flow 120 Mileage 15 RT 23.25 Comments _____
 (G) Final Shut-In 712 Sampler _____
 (H) Final Hydrostatic 1620 Straddle _____ Ruined Shale Packer _____
 Shale Packer _____ Ruined Packer _____
 Extra Packer _____ Extra Copies _____
 Extra Recorder _____

Initial Open 30
 Initial Shut-In 60
 Final Flow 60
 Final Shut-In 90
 Sub Total 1498.25
 Total 1498.25
 MP/DST Disc't _____

Approved By _____ Our Representative Phil Lopez Thank You

Trilobite Testing Inc. shall not be liable for damaged of any kind of the property or personnel of the one for whom a test is made, or for any loss suffered or sustained, directly or indirectly, through the use of its equipment, or its statements or opinion concerning the results of any test, tools lost or damaged in the hole shall be paid for at cost by the party for whom the test is made.



TRILOBITE TESTING INC.

1515 Commerce Parkway • Hays, Kansas 67601

Test Ticket

NO. 58731

4/10

Well Name & No. Sack Trust "A" #1-24 Test No. 5 Date 8-11-14
 Company Cobalt Energy LLC Elevation 2047 KB 2038 GL
 Address 115 S. Belmont #12 P.O. Box 8037 Wichita, KS 67208
 Co. Rep / Geo. Mike Maune Rig Southwind Rig 8
 Location: Sec. 24 Twp. 13s Rge. 19w Co. Ellis State KS

Interval Tested 3470 - 3540 Zone Tested LKC "H-I-J"
 Anchor Length 70 Drill Pipe Run 3446 Mud Wt. 8.9
 Top Packer Depth 3465 Drill Collars Run — Vis 49
 Bottom Packer Depth 3470 Wt. Pipe Run — WL 13.6
 Total Depth 3540 Chlorides 9,700 ppm System LCM Tr

Blow Description IF- BOB in 4mths
ISI- 7' Return
FF- BOB in 9mths
FST- BOB Return in 18mths

Rec	Feet of	%gas	%oil	%water	%mud
<u>0</u>	<u>GIP-693'</u>	<u>100%</u>			
<u>113'</u>	<u>GCO</u>	<u>20%</u>	<u>80%</u>		
<u>96'</u>	<u>MGO</u>	<u>30%</u>	<u>50%</u>		<u>20%</u>
<u>315'</u>	<u>SWGMCO</u>	<u>20%</u>	<u>50%</u>	<u>10%</u>	<u>20%</u>

Rec Total 524 BHT 114 Gravity 31 API RW @ °F Chlorides — ppm

(A) Initial Hydrostatic 1739 Test 1150 T-On Location 15:13
 (B) First Initial Flow 57 Jars 250 T-Started 16:07
 (C) First Final Flow 137 Safety Joint 75 T-Open 19:11
 (D) Initial Shut-In 994 Circ Sub _____ T-Pulled 23:11
 (E) Second Initial Flow 151 Hourly Standby _____ T-Out 01:30
 (F) Second Final Flow 226 Mileage 15 RT 23.25 Comments _____
 (G) Final Shut-In 981 Sampler _____
 (H) Final Hydrostatic 1,656 Straddle _____ Ruined Shale Packer _____
 Shale Packer _____ Ruined Packer _____

Initial Open 30 Extra Packer _____ Extra Copies _____
 Initial Shut-In 60 Extra Recorder _____ Sub Total 0
 Final Flow 60 Day Standby _____ Total 1498.25
 Final Shut-In 90 Accessibility _____ MP/DST Disc't _____
 Sub Total 1498.25

Approved By _____ Our Representative Mike Maune Thank You.

Trilobite Testing Inc. shall not be liable for damaged of any kind of the property or personnel of the one for whom a test is made, or for any loss suffered or sustained, directly or indirectly, through the use of its equipment, or its statements or opinion concerning the results of any test, tools lost or damaged in the hole shall be paid for at cost by the party for whom the test is made.



TRILOBITE TESTING INC.

1515 Commerce Parkway • Hays, Kansas 67601

Test Ticket

NO. 58732

4/10

Well Name & No. Sack Trust "A" #1-24 Test No. 6 Date 8-12-14
 Company Cobalt Energy LLC Elevation 2047 KB 2038 GL
 Address 115 S. Belmont #12 P.O. Box 8037 Wichita, KS 67208
 Co. Rep / Geo. Mike Maurer Rig Southwind Rig 8
 Location: Sec. 24 Twp. 13s Rge. 19w Co. Ellis State KS

Interval Tested 3592-3703 Zone Tested Arbucke
 Anchor Length 111' Drill Pipe Run 3572 Mud Wt. 9.0
 Top Packer Depth 3587 Drill Collars Run — Vis 55
 Bottom Packer Depth 3592 Wt. Pipe Run — WL 10.0
 Total Depth 3703 Chlorides 8,400 ppm System LCM 1

Blow Description IT - Built to 1 3/8" Blow
ISI - No Return
FF - No Blow
FST - No Return

Rec	Feet of	%gas	%oil	%water	%mud
<u>20'</u>	<u>M, with oil spots</u>			<u>100</u>	
Rec	Feet of	%gas	%oil	%water	%mud
Rec	Feet of	%gas	%oil	%water	%mud
Rec	Feet of	%gas	%oil	%water	%mud
Rec	Feet of	%gas	%oil	%water	%mud

Rec Total 20' BHT 110 Gravity — API RW — °F Chlorides — ppm

(A) Initial Hydrostatic <u>1,929</u>	<input checked="" type="checkbox"/> Test <u>1150</u>	T-On Location <u>20:28</u>
(B) First Initial Flow <u>39</u>	<input checked="" type="checkbox"/> Jars <u>250</u>	T-Started <u>23:16</u>
(C) First Final Flow <u>74</u>	<input checked="" type="checkbox"/> Safety Joint <u>75</u>	T-Open <u>02:43</u>
(D) Initial Shut-In <u>900</u>	<input type="checkbox"/> Circ Sub	T-Pulled <u>05:13</u>
(E) Second Initial Flow <u>25</u>	<input checked="" type="checkbox"/> Hourly Standby	T-Out <u>06:56</u>
(F) Second Final Flow <u>129</u>	<input checked="" type="checkbox"/> Mileage <u>15 RT x 2</u>	Comments <u>Pulled right, went back to bottom with bit. Loaded tools 8-13-14 @ 16:20</u>
(G) Final Shut-In <u>627</u>	<input type="checkbox"/> Sampler <u>46.50</u>	<input type="checkbox"/> Ruined Shale Packer
(H) Final Hydrostatic <u>1,759</u>	<input type="checkbox"/> Straddle	<input type="checkbox"/> Ruined Packer
Initial Open <u>30</u>	<input type="checkbox"/> Shale Packer	<input type="checkbox"/> Extra Copies
Initial Shut-In <u>60</u>	<input type="checkbox"/> Extra Packer	Sub Total <u>0</u>
Final Flow <u>30</u>	<input type="checkbox"/> Extra Recorder	Total <u>1521.50</u>
Final Shut-In <u>30</u>	<input type="checkbox"/> Day Standby	MP/DST Disc't
	<input type="checkbox"/> Accessibility	
	Sub Total <u>1521.50</u>	

Approved By _____ Our Representative Phillip Gray Thank You

Trilobite Testing Inc. shall not be liable for damaged of any kind of the property or personnel of the one for whom a test is made, or for any loss suffered or sustained, directly or indirectly, through the use of its equipment, or its statements or opinion concerning the results of any test, tools lost or damaged in the hole shall be paid for at cost by the party for whom the test is made.