



**TRILOBITE  
TESTING, INC.**

# DRILL STEM TEST REPORT

Mid-Con Energy Operating Inc

**27-13s-21w Trego**

2431 E.61st ST  
Ste 850  
Tulsa Oklahoma 74136- 1236  
ATTN: Ryan Logsdon

**Bertha-Riedel #2-27**

Job Ticket: 47356 **DST#: 2**

Test Start: 2012.04.03 @ 15:25:22

## GENERAL INFORMATION:

Formation: **Marmaton-Congl**  
 Deviated: No Whipstock: ft (KB)  
 Time Tool Opened: 18:40:47  
 Time Test Ended: 00:12:17  
 Interval: **4008.00 ft (KB) To 4048.00 ft (KB) (TVD)**  
 Total Depth: 4048.00 ft (KB) (TVD)  
 Hole Diameter: 7.85 inches Hole Condition: Fair  
 Test Type: Conventional Bottom Hole (Reset)  
 Tester: Ray Schwager  
 Unit No: 42  
 Reference Elevations: 2349.00 ft (KB)  
 2339.00 ft (CF)  
 KB to GR/CF: 10.00 ft

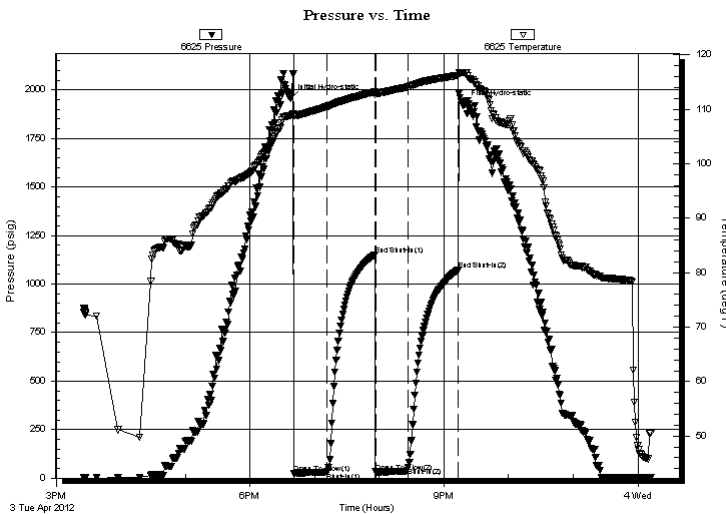
## Serial #: 6625

Inside

Press @ Run Depth: 54.57 psig @ 4014.00 ft (KB) Capacity: 8000.00 psig  
 Start Date: 2012.04.03 End Date: 2012.04.04 Last Calib.: 2012.04.04  
 Start Time: 15:25:22 End Time: 00:12:17 Time On Btm: 2012.04.03 @ 18:37:17  
 Time Off Btm: 2012.04.03 @ 21:18:16

TEST COMMENT: 30-IFP-surface bl Thru-out  
 45-ISIP-no bl  
 30-FFP-no bl  
 45-FSIP-no bl

## PRESSURE SUMMARY



| Time (Min.) | Pressure (psig) | Temp (deg F) | Annotation           |
|-------------|-----------------|--------------|----------------------|
| 0           | 1957.40         | 108.83       | Initial Hydro-static |
| 4           | 25.60           | 108.88       | Open To Flow (1)     |
| 34          | 29.80           | 110.41       | Shut-In(1)           |
| 79          | 1151.54         | 113.19       | End Shut-In(1)       |
| 79          | 32.54           | 112.72       | Open To Flow (2)     |
| 110         | 54.57           | 114.12       | Shut-In(2)           |
| 156         | 1071.07         | 116.19       | End Shut-In(2)       |
| 161         | 1925.04         | 116.69       | Final Hydro-static   |

## Recovery

| Length (ft) | Description   | Volume (bbl) |
|-------------|---------------|--------------|
| 20.00       | SOCM 1% O99%M | 0.10         |
|             |               |              |
|             |               |              |
|             |               |              |
|             |               |              |

## Gas Rates

| Choke (inches) | Pressure (psig) | Gas Rate (Mcf/d) |
|----------------|-----------------|------------------|
|                |                 |                  |

\* Recovery from multiple tests



**TRILOBITE  
TESTING, INC.**

# DRILL STEM TEST REPORT

**FLUID SUMMARY**

Mid-Con Energy Operating Inc  
2431 E.61st ST  
Ste 850  
Tulsa Oklahoma 74136- 1236  
ATTN: Ryan Logsdon

**27-13s-21w Trego**  
**Bertha-Riedel #2-27**  
Job Ticket: 47356      **DST#: 2**  
Test Start: 2012.04.03 @ 15:25:22

## Mud and Cushion Information

|                                  |                            |                 |         |
|----------------------------------|----------------------------|-----------------|---------|
| Mud Type: Gel Chem               | Cushion Type:              | Oil API:        | deg API |
| Mud Weight: 10.00 lb/gal         | Cushion Length: ft         | Water Salinity: | ppm     |
| Viscosity: 56.00 sec/qt          | Cushion Volume: bbl        |                 |         |
| Water Loss: 9.56 in <sup>3</sup> | Gas Cushion Type:          |                 |         |
| Resistivity: ohm.m               | Gas Cushion Pressure: psig |                 |         |
| Salinity: 5000.00 ppm            |                            |                 |         |
| Filter Cake: 1.00 inches         |                            |                 |         |

## Recovery Information

Recovery Table

| Length<br>ft | Description  | Volume<br>bbl |
|--------------|--------------|---------------|
| 20.00        | SOCM 1%O99%M | 0.098         |

Total Length: 20.00 ft      Total Volume: 0.098 bbl  
Num Fluid Samples: 0      Num Gas Bombs: 0      Serial #:  
Laboratory Name:      Laboratory Location:  
Recovery Comments:

