



DIAMOND TESTING, LLC
P.O. Box 157
HOISINGTON, KANSAS 67544
(620) 653-7550 • (800) 542-7313
STC/Stremel1dst4

Company Richlan Drilling Lease & Well No. Stremel No. 1
Elevation 1964 KB Formation Conglomerate/Arbuckle Effective Pay _____ Ft. Ticket No. J3298
Date 9-28-14 Sec. 18 Twp. 16S Range 16W County _____ Rush _____ State Kansas
Test Approved By Robert A. (Bob) Schreiber Diamond Representative John C. Riedl

Formation Test No. 4 Interval Tested from 3,475 ft. to 3,560 ft. Total Depth 3,560 ft.
Packer Depth 3,470 ft. Size 6 3/4 in. Packer Depth _____ ft. Size _____ in.
Packer Depth 3,475 ft. Size 6 3/4 in. Packer Depth _____ ft. Size _____ in.
Depth of Selective Zone Set _____ ft.

Top Recorder Depth (Inside) 3,478 ft. Recorder Number 30046 Cap. 6,000 psi.
Bottom Recorder Depth (Outside) 3,557 ft. Recorder Number 13498 Cap. 6,000 psi.
Below Straddle Recorder Depth _____ ft. Recorder Number _____ Cap. _____ psi.

Drilling Contractor Ninnescah Drilling, LLC - Rig 101 Drill Collar Length _____ ft I.D. _____ in.
Mud Type Chemical Viscosity 52 Weight Pipe Length _____ ft I.D. _____ in.
Weight 9.4 Water Loss 9.4 cc. Drill Pipe Length 3,455 ft I.D. 3 1/2 in.
Chlorides 5,200 P.P.M. Test Tool Length 20 ft Tool Size 3 1/2-IF in.
Jars: Make Sterling Serial Number Not Run Anchor Length 22' perf. w/63' drill pipe Size 4 1/2-FH in.
Did Well Flow? No Reversed Out No Surface Choke Size 1 in. Bottom Choke Size 5/8 in.
Main Hole Size 7 7/8 in. Tool Joint Size 4 1/2-XH in.

Blow: 1st Open: Strong blow increasing. Off bottom of bucket in 2 mins. No blow back during shut-in.

2nd Open: Strong blow increasing. Off bottom of bucket in 2 mins. No blow back during shut-in.

Recovered 180 ft. of oil specked, mud cut water = 2.561400 bbls. (Grind out: 80%-water; 20%-mud)

Recovered 620 ft. of water = 8.822600 bbls. (Chlorides: 26,000 Ppm)

Recovered 800 ft. of TOTAL FLUID = 11.384000 bbls.

Recovered _____ ft. of _____

Recovered _____ ft. of _____

Recovered _____ ft. of _____

Remarks Tool Sample Grind Out: 100%-water

Time Set Packer(s) 10:00 P.M. Time Started off Bottom 11:30 P.M. Maximum Temperature 110°
Initial Hydrostatic Pressure.....(A) 1705 P.S.I.
Initial Flow Period.....Minutes 15 (B) 97 P.S.I. to (C) 249 P.S.I.
Initial Closed In Period.....Minutes 30 (D) 1117 P.S.I.
Final Flow Period.....Minutes 15 (E) 259 P.S.I. to (F) 396 P.S.I.
Final Closed In Period.....Minutes 30 (G) 1096 P.S.I.
Final Hydrostatic Pressure.....(H) 1662 P.S.I.

Diamond Testing General Report

John Riedl
TESTER
CELL: 620-793-0550

General Information

Company Name	RICHLAN DRILLING	Job Number	J3298
Contact	RICK SCHREIBER	Representative	JOHN RIEDL
Well Name	STREMEL #1	Well Operator	RICHLAN DRILLING
Unique Well ID		Report Date	2014/09/29
Surface Location	S18/16S/16W	Prepared By	JOHN RIEDL
Field		Qualified By	BOB SCHREIBER

Test Information

Test Type	DST #4 CONVENTIONAL
Formation	CONG, ARBUCKLE
Well Fluid Type	
Test Purpose	

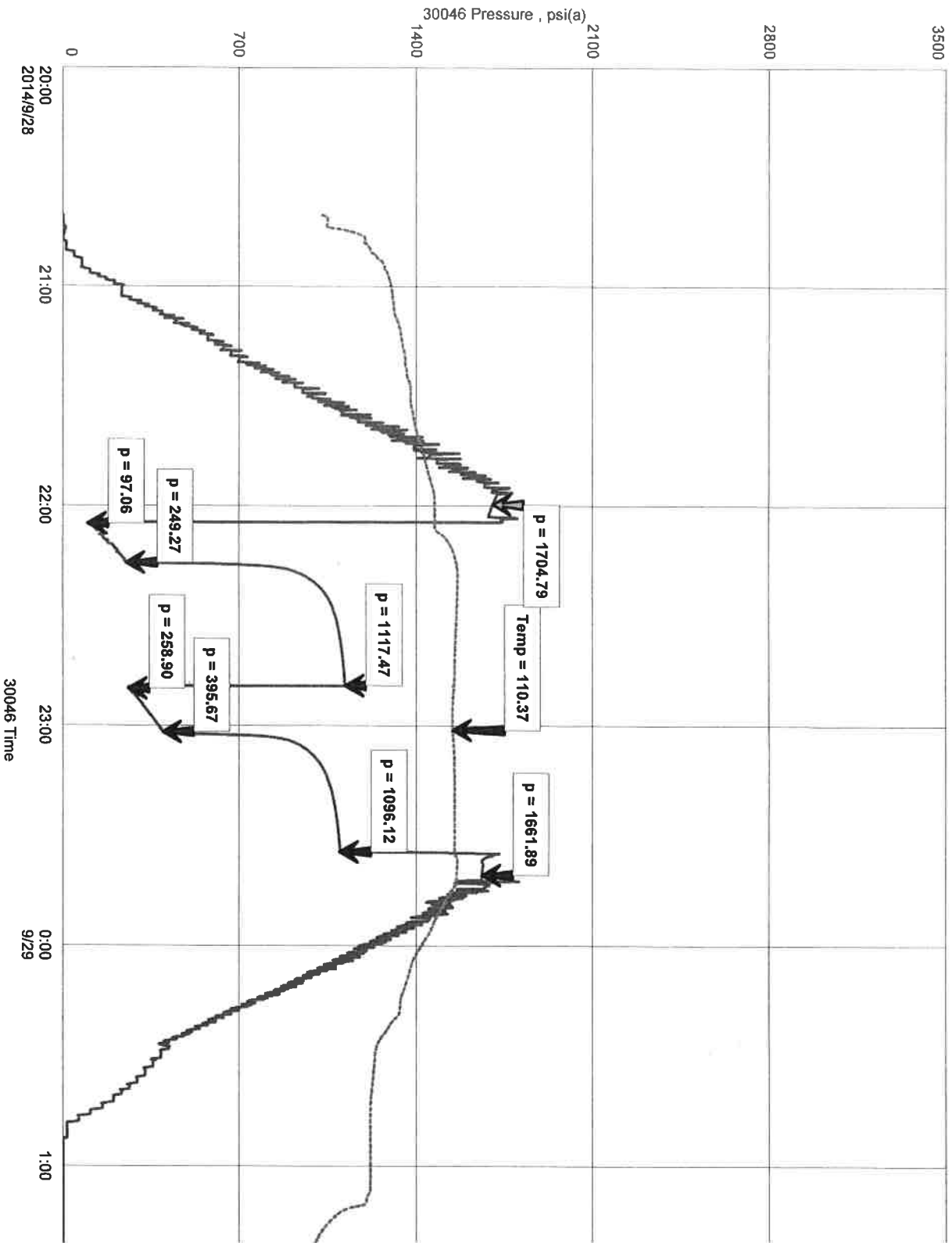
Start Test Date	2014/09/28	Start Test Time	20:40:00
Final Test Date	2014/09/29	Final Test Time	13:00:00

Test Recovery

RECOVERY: 180' OIL SPECKED MUD CUT WATER 80% WATER, 20% MUD
620' WATER CHLORIDES: 28,000 PPM
800' TOTAL FLUID

TOOL SAMPLE: 100% WATER

STREMEL #1



RICHMAN DRUG
STROMZ ~~1~~

DST 4
9/25/14

RFC 1389 D
DUST 420

