



DIAMOND TESTING, LLC
 P.O. Box 157
HOISINGTON, KANSAS 67544
 (620) 653-7550 • (800) 542-7313
 STC/Stremel1dst3

Company Richlan Drilling Lease & Well No. Stremel No. 1
 Elevation 1964 KB Formation Conglomerate/Arbuckle Effective Pay _____ Ft. Ticket No. J3297
 Date 9-28-14 Sec. 18 Twp. 16S Range 16W County Rush State Kansas
 Test Approved By Robert A. (Bob) Schreiber Diamond Representative John C. Riedl

Formation Test No. 3 Interval Tested from 3,475 ft. to 3,554 ft. Total Depth 3,554 ft.
 Packer Depth 3,470 ft. Size 6 3/4 in. Packer Depth _____ ft. Size _____ in.
 Packer Depth 3,475 ft. Size 6 3/4 in. Packer Depth _____ ft. Size _____ in.
 Depth of Selective Zone Set _____ ft.

Top Recorder Depth (Inside) 3,478 ft. Recorder Number 30046 Cap. 6,000 psi.
 Bottom Recorder Depth (Outside) 3,551 ft. Recorder Number 13498 Cap. 6,000 psi.
 Below Straddle Recorder Depth _____ ft. Recorder Number _____ Cap. _____ psi.

Drilling Contractor Ninnescah Drilling, LLC - Rig 101 Drill Collar Length _____ ft I.D. _____ in.
 Mud Type Chemical Viscosity 52 Weight Pipe Length _____ ft I.D. _____ in.
 Weight 9.4 Water Loss 9.4 cc. Drill Pipe Length 3,455 ft I.D. 3 1/2 in.
 Chlorides 5,200 P.P.M. Test Tool Length 20 ft Tool Size 3 1/2-IF in.
 Jars: Make Sterling Serial Number Not Run Anchor Length 16' perf. w/63' drill pipe Size 4 1/2-FH in.
 Did Well Flow? No Reversed Out No Surface Choke Size 1 in. Bottom Choke Size 5/8 in.
 Main Hole Size 7 7/8 in. Tool Joint Size 4 1/2-XH in.

Blow: 1st Open: Good blow increasing to 8 ins. No blow back during shut-in.
 2nd Open: Fair, 4 in. blow. No blow back during shut-in.

Recovered 35 ft. of gas cut oil = .498050 bbls. (Grind out: 15%-gas; 85%-oil)
 Recovered 60 ft. of mud & gas cut oil = .853800 bbls. (Grind out: 15%-gas; 55%-oil; 30%-mud)
 Recovered 95 ft. of TOTAL FLUID = 1.351850 bbls.
 Recovered _____ ft. of _____
 Recovered _____ ft. of _____
 Recovered _____ ft. of _____

Remarks Tool Sample Grind Out: 80%-oil; 20%-mud

Time Set Packer(s) 9:40 A.M. Time Started off Bottom 12:10 P.M. Maximum Temperature 110°
 Initial Hydrostatic Pressure.....(A) 1705 P.S.I.
 Initial Flow Period.....Minutes 30 (B) 24 P.S.I. to (C) 34 P.S.I.
 Initial Closed In Period.....Minutes 30 (D) 206 P.S.I.
 Final Flow Period.....Minutes 45 (E) 41 P.S.I. to (F) 51 P.S.I.
 Final Closed In Period.....Minutes 45 (G) 184 P.S.I.
 Final Hydrostatic Pressure.....(H) 1663 P.S.I.

Diamond Testing General Report

John Riedl
TESTER
CELL: 620-793-0550

General Information

Company Name	RICHLAN DRILLING	Job Number	J3297
Contact	RICK SCHREIBER	Representative	JOHN RIEDL
Well Name	STREMEL #1	Well Operator	RICHLAN DRILLING
Unique Well ID		Report Date	2014/09/28
Surface Location	S18/16S/16W	Prepared By	JOHN RIEDL
Field		Qualified By	BOB SCHREIBER

Test Information

Test Type	DST #3 CONVENTIONAL
Formation	CONG, ARBUCKLE
Well Fluid Type	
Test Purpose	

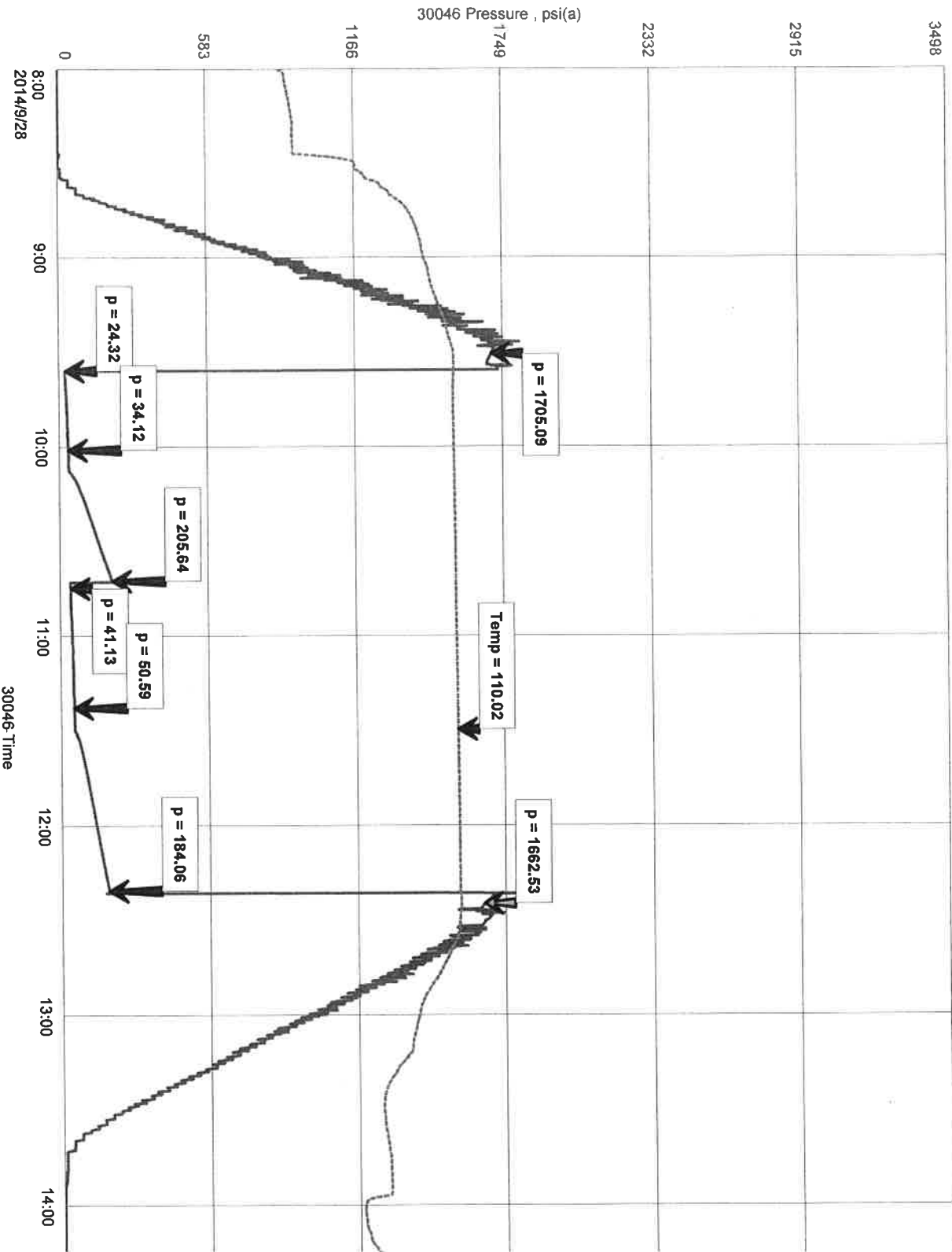
Start Test Date	2014/09/28	Start Test Time	08:00:00
Final Test Date	2014/09/28	Final Test Time	14:20:00

Test Recovery

RECOVERY: 35' GAS CUT OIL 15% GAS, 85% OIL
60' MUD+GAS CUT OIL 15% GAS, 55% OIL, 30% MUD
95' TOTAL FLUID

TOOL SAMPLE: 80% OIL, 20% MUD

STREMEL #1



RICKY LA W AREA DIST 3
ST. KUMOC #1 8/28/68

ASPC. B. 498.
SUBSIDIA

