

DIAMOND TESTING, LLC
P.O. Box 157
HOISINGTON, KANSAS 67544
(620) 653-7550 • (800) 542-7313
stoltenberg-boor1-17DST1

Company Bird Dog Oil, LLC Lease & Well No. Stoltenberg - Boor No. 1-17
Elevation 1880 EGL Formation Lansing/Kansas City "A-B" Effective Pay _____ Ft. Ticket No. RR073
Date 8-26-14 Sec. 17 Twp. 16S Range 10W County Ellsworth State Kansas
Test Approved By Adam Nighswonger Diamond Representative Ricky Ray

Formation Test No. 1 Interval Tested from 3,036 ft. to 3,087 ft. Total Depth 3,087 ft.
Packer Depth 3,031 ft. Size 6 3/4 in. Packer Depth _____ ft. Size _____ in.
Packer Depth 3,036 ft. Size 6 3/4 in. Packer Depth _____ ft. Size _____ in.
Depth of Selective Zone Set _____ ft.

Top Recorder Depth (Inside) 3,024 ft. Recorder Number 0062 Cap. 5,000 psi.
Bottom Recorder Depth (Outside) 3,074 ft. Recorder Number 5954 Cap. 5,000 psi.
Below Straddle Recorder Depth _____ ft. Recorder Number _____ Cap. _____ psi.

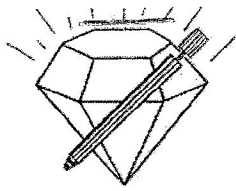
Drilling Contractor Southwind Drilling, Inc. - Rig 6 Drill Collar Length _____ ft I.D. _____ in.
Mud Type Chemical Viscosity 58 Weight Pipe Length _____ ft I.D. _____ in.
Weight 9.2 Water Loss 9.2 cc. Drill Pipe Length 3,009 ft I.D. 3 1/2 in.
Chlorides 6,300 P.P.M. Test Tool Length 27 ft Tool Size 3 1/2-IF in.
Jars: Make Sterling Serial Number Not Run Anchor Length 19' perf. w/ 32' drill pipe Size 4 1/2-FH in.
Did Well Flow? No Reversed Out No Surface Choke Size 1 in. Bottom Choke Size 5/8 in.
Main Hole Size 7 7/8 in. Tool Joint Size 4 1/2-XH in.

Blow: 1st Open: MISRUN - Due to fill or bridge!!!!

2nd Open: N/A

Recovered _____ ft. of _____
Recovered _____ ft. of _____
Recovered _____ ft. of _____
Recovered _____ ft. of _____
Recovered _____ ft. of _____
Recovered _____ ft. of _____
Remarks MISRUN!

Time Set Packer(s) _____ Time Started off Bottom _____ Maximum Temperature _____
Initial Hydrostatic Pressure.....(A) _____ P.S.I.
Initial Flow Period.....Minutes _____ (B) _____ P.S.I. to (C) _____ P.S.I.
Initial Closed In Period.....Minutes _____ (D) _____ P.S.I.
Final Flow Period.....Minutes _____ (E) _____ P.S.I. to (F) _____ P.S.I.
Final Closed In Period.....Minutes _____ (G) _____ P.S.I.
Final Hydrostatic Pressure.....(H) _____ P.S.I.



DIAMOND TESTING, LLC
P.O. Box 157
HOISINGTON, KANSAS 67544
(620) 653-7550 • (800) 542-7313
stoltenberg-boor1-17DST2

Company Bird Dog Oil, LLC Lease & Well No. Stoltenberg - Boor No. 1-17
Elevation 1880 EGL Formation Lansing/Kansas City "A-B" Effective Pay _____ Ft. Ticket No. RR074
Date 8-27-14 Sec. 17 Twp. 16S Range 10W County Ellsworth State Kansas
Test Approved By Adam Nighswonger Diamond Representative Ricky Ray

Formation Test No. 2 Interval Tested from 3,036 ft. to 3,087 ft. Total Depth 3,087 ft
Packer Depth 3,031 ft. Size 6 3/4 in. Packer Depth _____ ft. Size _____ in.
Packer Depth 3,036 ft. Size 6 3/4 in. Packer Depth _____ ft. Size _____ in.
Depth of Selective Zone Set _____ ft.

Top Recorder Depth (Inside) 3,024 ft. Recorder Number 0062 Cap. 5,000 psi.
Bottom Recorder Depth (Outside) 3,074 ft. Recorder Number 5954 Cap. 5,000 psi.
Below Straddle Recorder Depth _____ ft. Recorder Number _____ Cap. _____ psi.

Drilling Contractor Southwind Drilling, Inc. - Rig 6 Drill Collar Length _____ ft I.D. _____ in.
Mud Type Chemical Viscosity 58 Weight Pipe Length _____ ft I.D. _____ in.
Weight 9.2 Water Loss 9.2 cc. Drill Pipe Length 3,009 ft I.D. 3 1/2 in.
Chlorides 6,300 P.P.M. Test Tool Length 27 ft Tool Size 3 1/2-IF in.
Jars: Make Sterling Serial Number Not Run Anchor Length 19' perf. w/ 32' drill pipe Size 4 1/2-FH in.
Did Well Flow? No Reversed Out No Surface Choke Size 1 in. Bottom Choke Size 5/8 in.
Main Hole Size 7 7/8 in. Tool Joint Size 4 1/2-XH in.

Blow: 1st Open: Weak, surface blow increasing to 1/4 in. in 15 mins. No blow back during shut-in.
2nd Open: No blow. No blow back during shut-in.

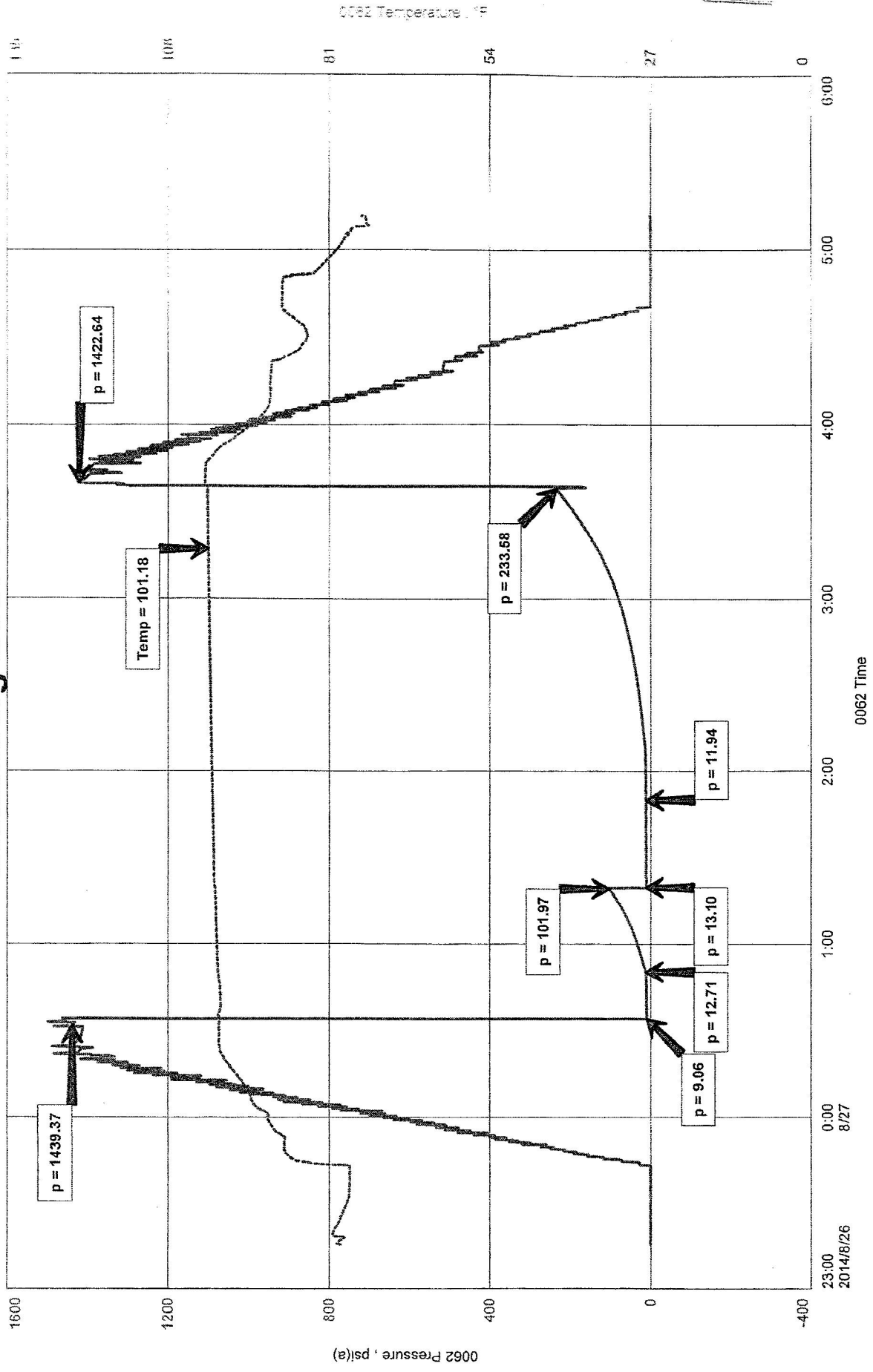
Recovered 5 ft. of mud = .071150 bbls. (Grind out: 100%-mud)
Recovered _____ ft. of _____
Recovered _____ ft. of _____
Recovered _____ ft. of _____
Recovered _____ ft. of _____
Recovered _____ ft. of _____
Remarks Tool Sample Grind Out: 100%-mud

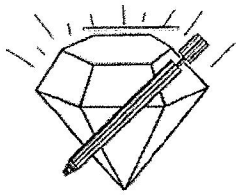
Time Set Packer(s) 12:35 A.M. Time Started off Bottom 3:35 A.M. Maximum Temperature 101°
Initial Hydrostatic Pressure.....(A) 1439 P.S.I.
Initial Flow Period.....Minutes 15 (B) 9 P.S.I. to (C) 13 P.S.I.
Initial Closed In Period.....Minutes 30 (D) 102 P.S.I.
Final Flow Period.....Minutes 45 (E) 13 P.S.I. to (F) 12 P.S.I.
Final Closed In Period.....Minutes 90 (G) 234 P.S.I.
Final Hydrostatic Pressure.....(H) 1423 P.S.I.

Bird Dog Oil LLC
 Dst 2 LKC "A-B" (3036-3087)
 Start Test Date: 2014/08/26
 Final Test Date: 2014/08/27

Stoltenberg Boor 1-17
 Formation: Dst 2 LKC "A-B" (3036-3087)
 Pool: Infill
 Job Number: RR07

Stoltenberg Boor 1-17





DIAMOND TESTING, LLC
 P.O. Box 157
HOISINGTON, KANSAS 67544
 (620) 653-7550 • (800) 542-7313
 stollenberg-boor1-17DST3

Company Bird Dog Oil, LLC Lease & Well No. Stollenberg - Boor No. 1-17
 Elevation 1880 EGL Formation Arbuckle Effective Pay _____ Ft. Ticket No. RR075
 Date 8-28-14 Sec. 17 Twp. 16S Range 10W County Ellsworth State Kansas
 Test Approved By Adam Nighswonger Diamond Representative Ricky Ray

Formation Test No. 3 Interval Tested from 3,310 ft. to 3,374 ft. Total Depth 3,374 ft.
 Packer Depth 3,305 ft. Size 6 3/4 in. Packer Depth _____ ft. Size _____ in.
 Packer Depth 3,310 ft. Size 6 3/4 in. Packer Depth _____ ft. Size _____ in.
 Depth of Selective Zone Set _____ ft.

Top Recorder Depth (Inside) 3,292 ft. Recorder Number 0062 Cap. 5,000 psi.
 Bottom Recorder Depth (Outside) 3,345 ft. Recorder Number 5954 Cap. 5,000 psi.
 Below Straddle Recorder Depth _____ ft. Recorder Number _____ Cap. _____ psi.

Drilling Contractor Southwind Drilling, Inc. - Rig 6 Drill Collar Length _____ ft I.D. _____ in.
 Mud Type Chemical Viscosity 68 Weight Pipe Length _____ ft I.D. _____ in.
 Weight 9.4 Water Loss 10.4 cc. Drill Pipe Length 3,277 ft I.D. 3 1/2 in.
 Chlorides 6,100 P.P.M. Test Tool Length 33 ft Tool Size 3 1/2-IF in.
 Jars: Make Sterling Serial Number 8 Anchor Length 33' perf. w/ 31' drill pipe Size 4 1/2-FH in.
 Did Well Flow? No Reversed Out No Surface Choke Size 1 in. Bottom Choke Size 5/8 in.
 Main Hole Size 7 7/8 in. Tool Joint Size 4 1/2-XH in.

Blow: 1st Open: Weak, surface blow increasing to 1/2 in. in 15 mins. No blow back during shut-in.

2nd Open: No blow. No blow back during shut-in.

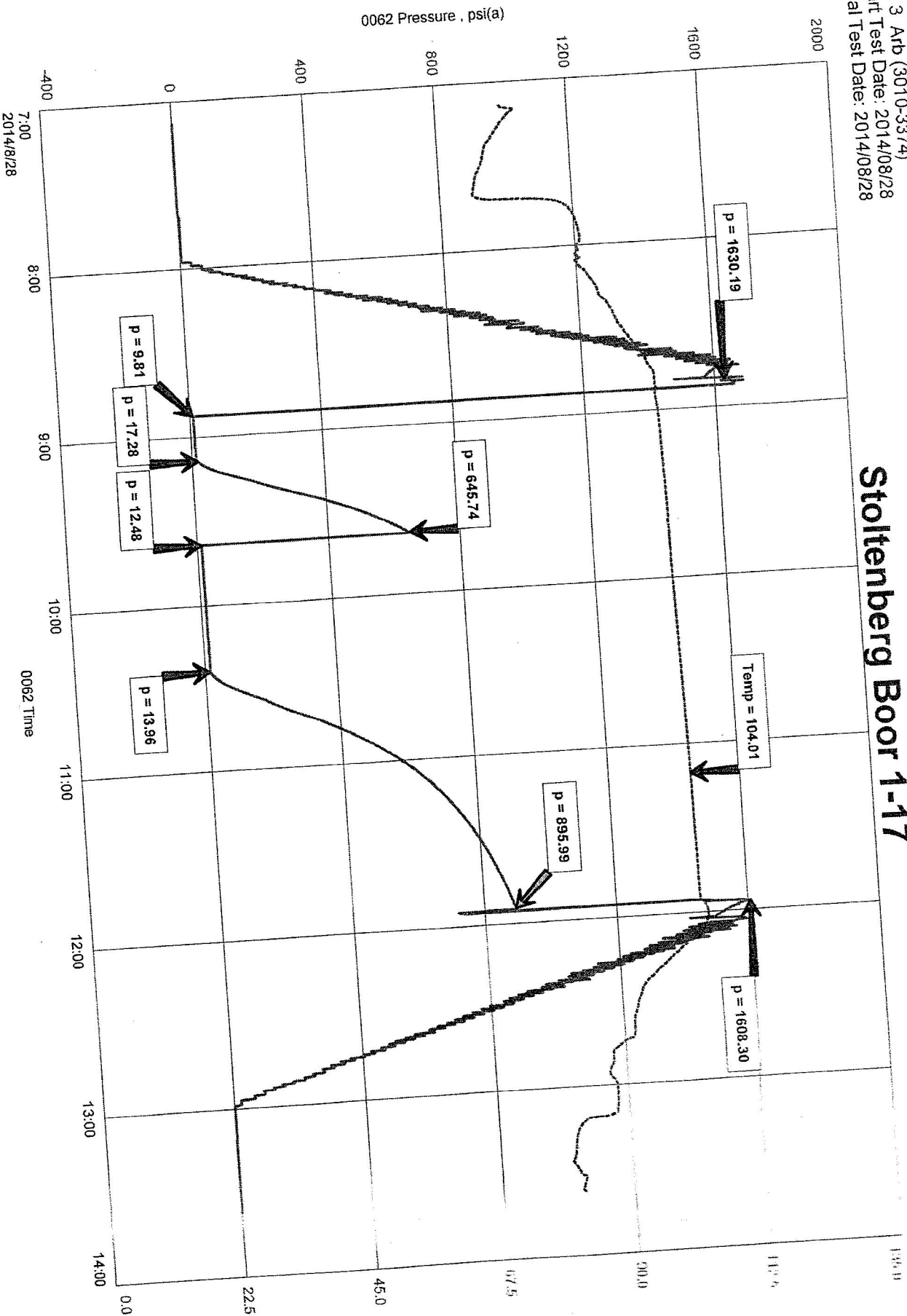
Recovered 10 ft. of mud = .142300 bbls. (Grind out: 100%-mud)
 Recovered _____ ft. of _____
 Recovered _____ ft. of _____
 Recovered _____ ft. of _____
 Recovered _____ ft. of _____
 Recovered _____ ft. of _____

Remarks Tool Sample Grind Out: 1%-oil; 99%-mud

Time Set Packer(s) 8:53 A.M. Time Started off Bottom 11:53 A.M. Maximum Temperature 104°
 Initial Hydrostatic Pressure.....(A) 1630 P.S.I.
 Initial Flow Period.....Minutes 15 (B) 10 P.S.I. to (C) 17 P.S.I.
 Initial Closed In Period.....Minutes 30 (D) 646 P.S.I.
 Final Flow Period.....Minutes 45 (E) 12 P.S.I. to (F) 14 P.S.I.
 Final Closed In Period.....Minutes 90 (G) 896 P.S.I.
 Final Hydrostatic Pressure.....(H) 1608 P.S.I.

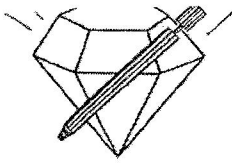
Bird Dog Oil LLC
 Dst 3 Arb (3010-3374)
 Start Test Date: 2014/08/28
 Final Test Date: 2014/08/28

Stoltenberg Boor 1-17



41-82-8 DATE 3 ON TEST MON RGE. 191 TWP. 71 SEC. 17-17 ON WELL AND LEASE CTR. 110 God pr

Formation: DST 3 Arb (3374)
 Pool: Little
 Job Number: 1830



DIAMOND TESTING, LLC
P.O. Box 157
HOISINGTON, KANSAS 67544
(620) 653-7550 • (800) 542-7313
stoltenberg-boor1-17DST4

Company Bird Dog Oil, LLC Lease & Well No. Stoltenberg - Boor No. 1-17
Elevation 1880 EGL Formation Arbuckle Effective Pay _____ Ft. Ticket No. RR071
Date 8-28-14 Sec. 17 Twp. 16S Range 10W County Ellsworth State Kansas
Test Approved By Adam Nighswonger Diamond Representative Ricky Ray

Formation Test No. 4 Interval Tested from 3,374 ft. to 3,385 ft. Total Depth 3,385 ft.
Packer Depth 3,369 ft. Size 6 3/4 in. Packer Depth _____ ft. Size _____ in.
Packer Depth 3,374 ft. Size 6 3/4 in. Packer Depth _____ ft. Size _____ in.
Depth of Selective Zone Set _____ ft.

Top Recorder Depth (Inside) 3,356 ft. Recorder Number 0062 Cap. 5,000 psi
Bottom Recorder Depth (Outside) 3,366 ft. Recorder Number 5954 Cap. 5,000 psi
Below Straddle Recorder Depth _____ ft. Recorder Number _____ Cap. _____ psi

Drilling Contractor Southwind Drilling, Inc. - Rig 6 Drill Collar Length _____ ft I.D. _____ in.
Mud Type Chemical Viscosity 68 Weight Pipe Length _____ ft I.D. _____ in.
Weight 9.4 Water Loss 10.4 cc. Drill Pipe Length 3,341 ft I.D. 3 1/2 in.
Chlorides 6,100 P.P.M. Test Tool Length 33 ft Tool Size 3 1/2-IF in.
Jars: Make Sterling Serial Number 8 Anchor Length 11 ft. Size 4 1/2-FH in.
Did Well Flow? No Reversed Out No Surface Choke Size 1 in. Bottom Choke Size 5/8 in.
Main Hole Size 7 7/8 in. Tool Joint Size 4 1/2-XH in.

Blow: 1st Open: Weak, 1/4 in. blow increasing to 5 ins. in 15 mins. No blow back during shut-in.
2nd Open: Weak, surface blow increasing to 11 1/4 ins. in 45 mins. No blow back during shut-in.

Recovered 10 ft. of oil = .142300 bbls. (Grind out: 100%-oil) Gravity: 40 @ 60°
Recovered 129 ft. of oil & mud cut water = 1.835670 bbls. (Grind out: 6%-oil; 86%-water; 8%-mud) Chlorides: 33,000 Ppm PH: 7.0 RW: .30 @ 68°
Recovered 139 ft. of TOTAL FLUID = 1.977970 bbls.
Recovered _____ ft. of _____
Recovered _____ ft. of _____
Recovered _____ ft. of _____
Remarks Tool Sample Grind Out: 1%-gas; 20%-oil; 57%-water; 22%-mud

Time Set Packer(s) 10:36 P.M. Time Started off Bottom 1:36 A.M. Maximum Temperature 107°
Initial Hydrostatic Pressure.....(A) 1659 P.S.I.
Initial Flow Period.....Minutes 15 (B) 10 P.S.I. to (C) 32 P.S.I.
Initial Closed In Period.....Minutes 30 (D) 998 P.S.I.
Final Flow Period.....Minutes 45 (E) 33 P.S.I. to (F) 77 P.S.I.
Final Closed In Period.....Minutes 90 (G) 939 P.S.I.
Final Hydrostatic Pressure.....(H) 1631 P.S.I.

Bird Dog Oil LLC
 Dist 4 Arb (3374-3385)
 Start Test Date: 2014/08/28
 Final Test Date: 2014/08/29

Stoltenberg Boor 1-17
 Formation: Dist 4 Arb (3374-3385)
 Pool: Initial
 Job Number: RR076

Stoltenberg Boor 1-17

