



Geologist's Report

Company: Webco Oil Company Inc.
Lease: Kaufman #W-1
Field: Kraft-Prusa
Location: SE-NW-SE-SW (663 FSL & 1810 FWL)
Sec: 36 Twsp: 15S Rge: 12W
County: Russell State: Kansas
GL: 1869 KB: 1878

Contractor: Southwind Drilling rig #2
Spud: 3/10/14 Comp: 3/16/14
RTD: 3365' LTD: None
Mud Up: 2600' Type Mud: Chemical/Displaced

Samples Saved From: 2700' to RTD
Drilling Time Kept From: 2700' to RTD
Samples Examined From: 2700' to RTD
Geological Supervision From: 2700' to RTD
Geologist on Well: Clint Musgrove & Kurt Talbott

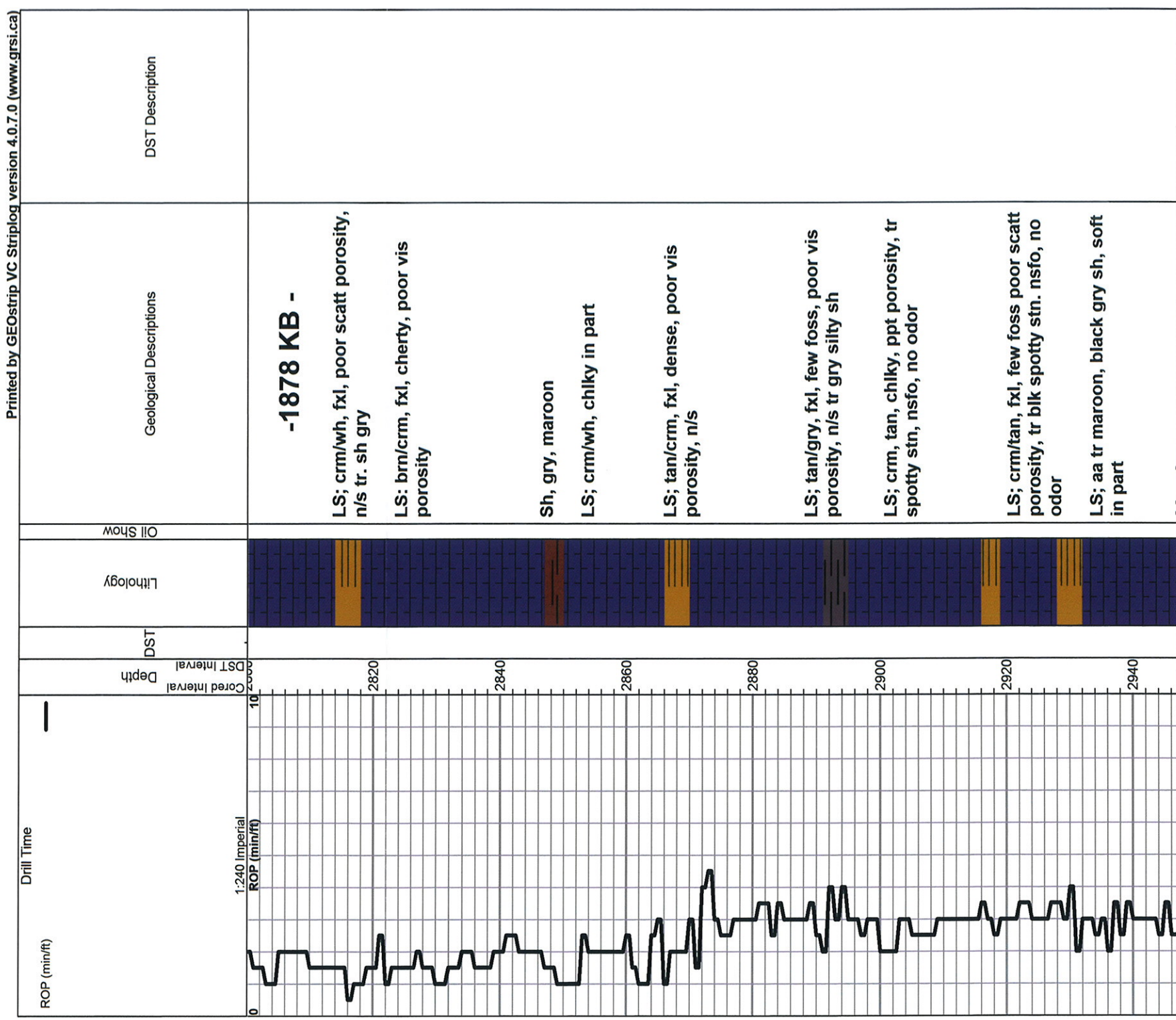
Surface Casing: **8 5/8" @ 473'**

Production: **None**

Logs: **By Nabors: None**



OTHER SYMBOLS



Heebner 2946.0 (-1069.0)

Black carb sh

LS; crm/tan, fxl, dense poor scatt porosity, tr blk stn, nsfo
LS; tan/brn, fxl, dense cherty, poor porosity, nsfo, tr blk stn

Douglas 2976.0 (-1098.0)

Sh gry maroon, black

Sand; gry/grn, fine grained, poor porosity, friable, mica

Sh; gry/grm soft

AA

AA

Brown Lime 3039.0 (-1161.0)

LS; tan, buff, fxl, foss, dense, cherty in part

Lansing 3052.0 (-1175.0)

LS; crm/wh/tan, fxl, ool foss, fair good oom porosity,, lt brn gold brn stn, tr fair sfo, faint odor, chlky

LS; tan/gry, fxl, foss, ool, dense, poor scatt porosity, cherty in part

LS; crm/tan, fxl, ool, scatt iner xln to sub oom porosity, no vis show, chlky

LS; gry/tan, fxl, ool, foss, dense, poor vis porosity, cherty

LS; crm/tan, fxl, ool/foss, poor vis porosity, boney chert, wh/crm

Sh. gry soft

AA

LS- wh/crm, fxl, ool, fair oom porosity, no vis shows, no odor

LS; crm/tan, fxl, ool, scatt oom, porosity, chalky in part, boney wh chert

I S.tan/huff fxl dense poor vis

DST #1 3053-3080
30-30-30-30

Blow: weak 1/2 inch
2nd Opening: weak 1 inch

Recovery:

15' SLOCM(5%O, 95% M)

Pressures:

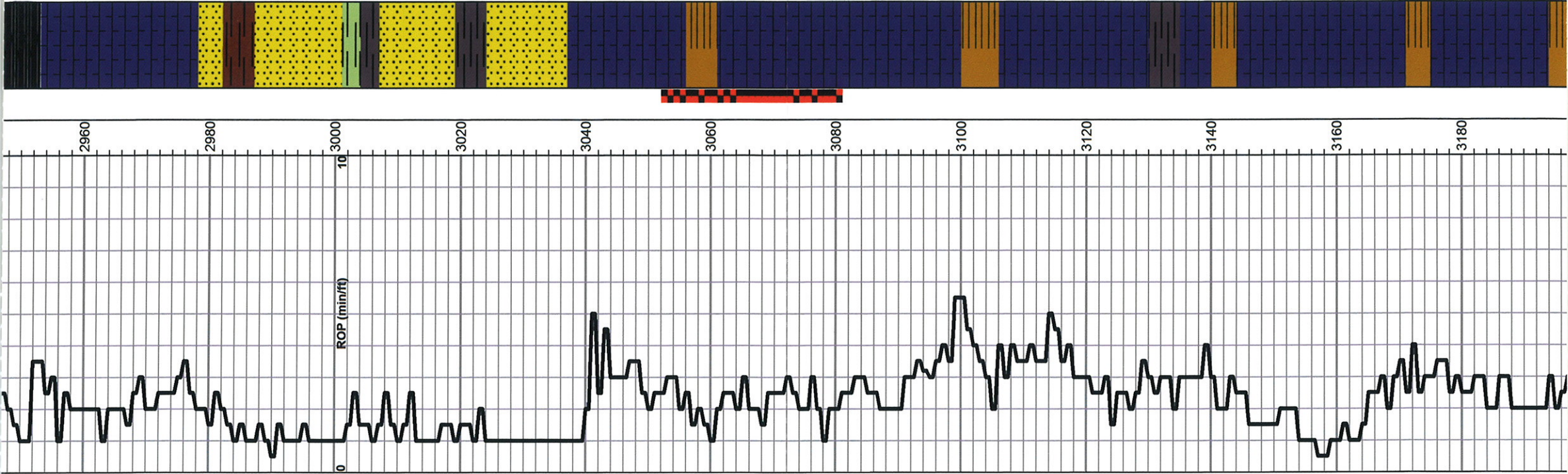
ISIP: 80 psi

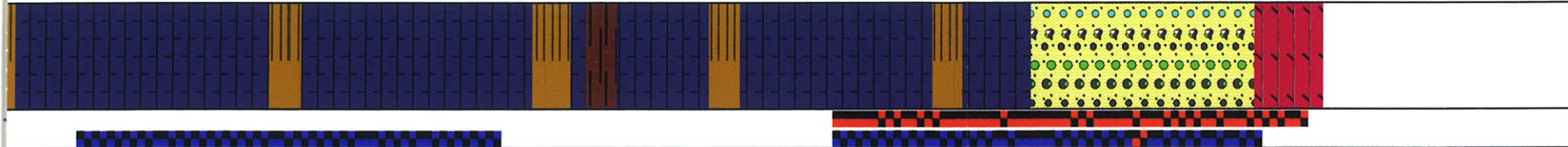
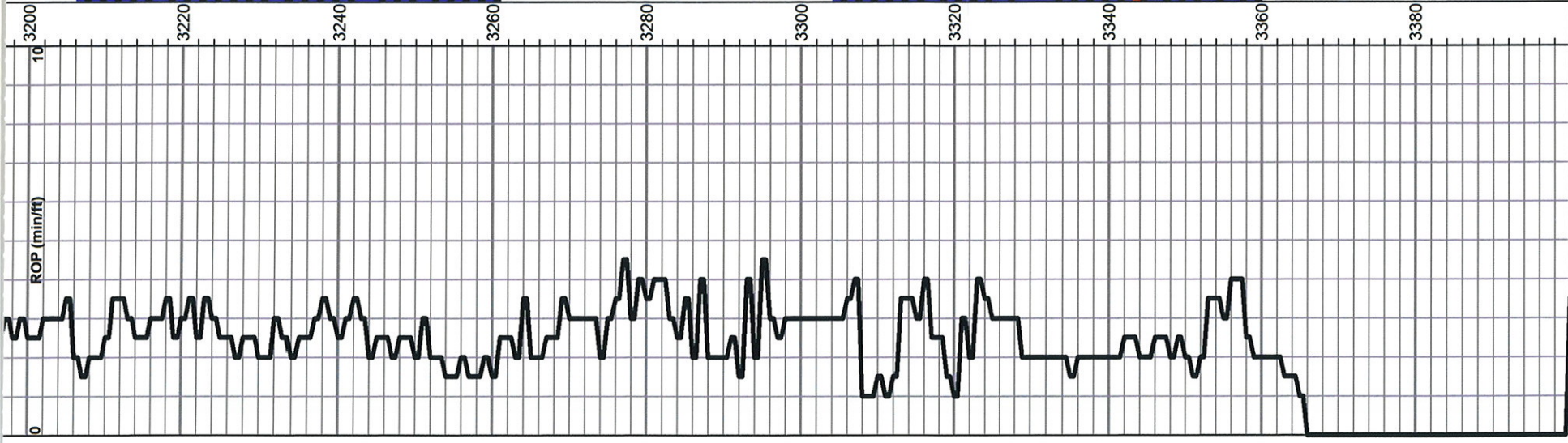
FSIP: 73 psi

IFP: 13-15 psi

FFP: 11-17 psi

HSH: 1447-1427 psi





porosity, cherty in part

AA

LS- wh/crm, fxl, ool, foss, poor vis porosity, chlky

AA

LS- crm/tan, fxl, ool, poor/fair ppt to inter xln porosity, golden brn stn, sfo fair odor

LS- tan/gry, fxl, dense, poor vis porosity

LS; crm, fxl, poor vis porosity dense

Sh; gry/red

LS; crm/gry, fxl, scatt porosity, n/s

LS; gry, fxl, cherty, tr pry, poor vis porosity

BKC 3307.0 (-1430.0)

LS; gry, fxl, poor vis porosity dense

LS: gry/crm, fxl, dense, n/s

Cong 3328.0 (-1450.0)

VC; ch

VC, cherty sh, poor vis porosity

VC, cherty sh, few chalky pieces

Arbuckle 3356.0 (-1478.0)

Dol; wh/crm, med xln, scatt porosity, ft blk stn, sfo w/broken, good odor

RTD 3365.0 (-1487.0)

DST #2 3205-3260
30-30-30-30
 Blow: weak 1/2 inch
 2nd Opening: very weak dead in 10 min
 Recovery:
 12' Drilling Mud
 Pressures:
 ISIP: 66 psi
 FSIP: 51 psi
 IFP: 13-16 psi
 FFP: 17-21 psi
 HSH: 1546-1540 psi

DST #3 3304-3360
30-30-45-60
 Blow: weak 1/4 inch
 2nd Opening: very weak 1/4 inch
 Recovery:
 75' Drilling Mud (7% 93%M)
 Pressures:
 ISIP: 1106 psi
 FSIP: 1109 psi
 IFP: 14-27 psi
 FFP: 31-46 psi
 HSH: 1401-1574 psi

DST #4 3304-3365
30-30-45-60
 Blow: good 7in
 2nd Opening: strong 9 in
 Recovery:
 150' MW (10%M 90% W)
 Pressures:
 ISIP: 1103 psi
 FSIP: 1107 psi
 IFP: 14-41 psi
 FFP: 46-92 psi
 HSH: 1602-1593 psi