



DRILL STEM TEST REPORT

Prepared For: **Landmark Resources Inc.**

1616 Voss Rd. STE 600
Houston TX 77057

ATTN: Brad Rine

Janzen #3-7

7-17s-33w Scott,KS

Start Date: 2014.10.17 @ 16:56:15

End Date: 2014.10.18 @ 02:13:30

Job Ticket #: 59170 DST #: 1

Trilobite Testing, Inc
1515 Commerce Parkway Hays, KS 67601
ph: 785-625-4778 fax: 785-625-5620

Printed: 2014.10.22 @ 16:30:23



**TRILOBITE
TESTING, INC**

DRILL STEM TEST REPORT

Landmark Resources Inc.

7-17s-33w Scott,KS

1616 Voss Rd. STE 600
Houston TX 77057

Janzen #3-7

Job Ticket: 59170

DST#: 1

ATTN: Brad Rine

Test Start: 2014.10.17 @ 16:56:15

GENERAL INFORMATION:

Formation: **Marmaton**

Deviated: No Whipstock: ft (KB)

Time Tool Opened: 19:57:15

Time Test Ended: 02:13:30

Test Type: Conventional Bottom Hole (Initial)

Tester: Mike Roberts

Unit No: 65

Interval: 4425.00 ft (KB) To 4458.00 ft (KB) (TVD)

Reference Elevations: 3089.00 ft (KB)

Total Depth: 4458.00 ft (KB) (TVD)

3079.00 ft (CF)

Hole Diameter: 7.88 inches Hole Condition: Fair

KB to GR/CF: 10.00 ft

Serial #: 8846 Inside

Press@RunDepth: 75.97 psig @ 4453.00 ft (KB)

Capacity: 8000.00 psig

Start Date: 2014.10.17

End Date: 2014.10.18

Last Calib.: 2014.10.18

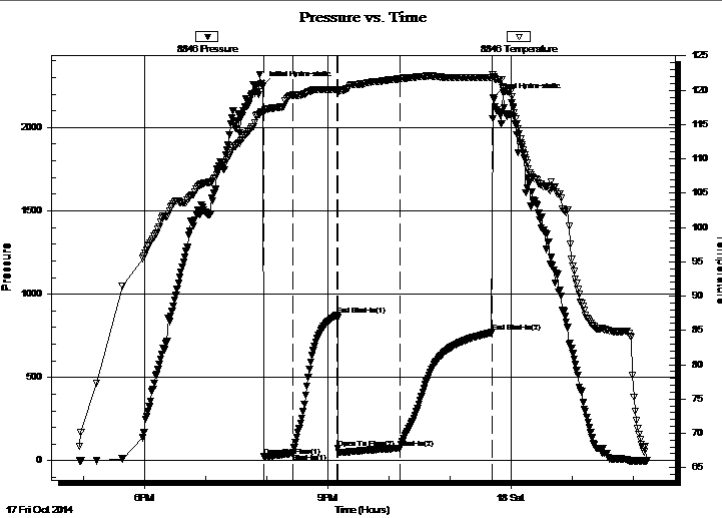
Start Time: 16:56:15

End Time: 02:13:30

Time On Btm: 2014.10.17 @ 19:56:15

Time Off Btm: 2014.10.17 @ 23:42:45

TEST COMMENT: IF: Built to 9" blow
IS: No return blow
FF: BOB in 35 min.
FS: No return blow



PRESSURE SUMMARY

Time (Min.)	Pressure (psig)	Temp (deg F)	Annotation
0	2249.86	116.68	Initial Hydro-static
1	24.42	116.93	Open To Flow (1)
29	44.05	119.26	Shut-In(1)
73	875.46	120.10	End Shut-In(1)
74	76.51	119.76	Open To Flow (2)
135	75.97	121.66	Shut-In(2)
225	770.34	121.87	End Shut-In(2)
227	2181.35	122.02	Final Hydro-static

Recovery

Length (ft)	Description	Volume (bbl)
62.00	free oil	0.87
62.00	mco 20% m 80% o	0.87

Gas Rates

	Choke (inches)	Pressure (psig)	Gas Rate (MMcf/d)



**TRILOBITE
TESTING, INC**

DRILL STEM TEST REPORT

Landmark Resources Inc.

7-17s-33w Scott,KS

1616 Voss Rd. STE 600
Houston TX 77057

Janzen #3-7

Job Ticket: 59170

DST#: 1

ATTN: Brad Rine

Test Start: 2014.10.17 @ 16:56:15

GENERAL INFORMATION:

Formation: **Marmaton**

Deviated: No Whipstock: ft (KB)

Time Tool Opened: 19:57:15

Time Test Ended: 02:13:30

Test Type: Conventional Bottom Hole (Initial)

Tester: Mike Roberts

Unit No: 65

Interval: 4425.00 ft (KB) To 4458.00 ft (KB) (TVD)

Reference Elevations: 3089.00 ft (KB)

Total Depth: 4458.00 ft (KB) (TVD)

3079.00 ft (CF)

Hole Diameter: 7.88 inches Hole Condition: Fair

KB to GR/CF: 10.00 ft

Serial #: 8737 Outside

Press@RunDepth: psig @ 4453.00 ft (KB)

Capacity: 8000.00 psig

Start Date: 2014.10.17 End Date: 2014.10.18

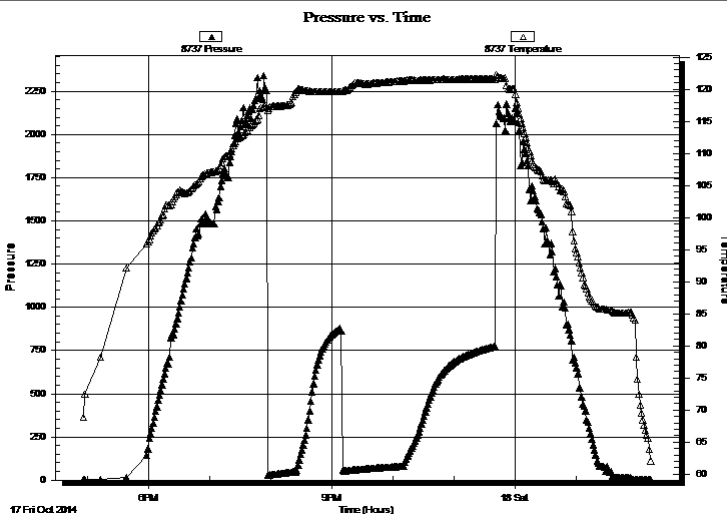
Last Calib.: 2014.10.18

Start Time: 16:56:15 End Time: 02:13:45

Time On Btm:

Time Off Btm:

TEST COMMENT: IF: Built to 9" blow
IS: No return blow
FF: BOB in 35 min.
FS: No return blow



PRESSURE SUMMARY

Time (Min.)	Pressure (psig)	Temp (deg F)	Annotation

Recovery

Length (ft)	Description	Volume (bbl)
62.00	free oil	0.87
62.00	mco 20% m 80% o	0.87

Gas Rates

Choke (inches)	Pressure (psig)	Gas Rate (MMcf/d)



**TRILOBITE
TESTING, INC.**

DRILL STEM TEST REPORT

TOOL DIAGRAM

Landmark Resources Inc.

7-17s-33w Scott,KS

1616 Voss Rd. STE 600
Houston TX 77057

Janzen #3-7

Job Ticket: 59170

DST#: 1

ATTN: Brad Rine

Test Start: 2014.10.17 @ 16:56:15

Tool Information

Drill Pipe:	Length: 4411.00 ft	Diameter: 3.80 inches	Volume: 61.87 bbl	Tool Weight: 1500.00 lb
Heavy Wt. Pipe:	Length: 0.00 ft	Diameter: 0.00 inches	Volume: 0.00 bbl	Weight set on Packer: 25000.00 lb
Drill Collar:	Length: 0.00 ft	Diameter: 0.00 inches	Volume: 0.00 bbl	Weight to Pull Loose: 90000.00 lb
			<u>Total Volume: 61.87 bbl</u>	Tool Chased 0.00 ft
Drill Pipe Above KB:	10.00 ft			String Weight: Initial 76000.00 lb
Depth to Top Packer:	4425.00 ft			Final 77000.00 lb
Depth to Bottom Packer:	ft			
Interval between Packers:	33.00 ft			
Tool Length:	57.00 ft			
Number of Packers:	2	Diameter: 6.75 inches		

Tool Comments:

Tool Description	Length (ft)	Serial No.	Position	Depth (ft)	Accum. Lengths
------------------	-------------	------------	----------	------------	----------------

Change Over Sub	1.00			4402.00	
Shut In Tool	5.00			4407.00	
Hydraulic tool	5.00			4412.00	
Jars	5.00			4417.00	
Safety Joint	3.00			4420.00	
Packer	5.00			4425.00	24.00 Bottom Of Top Packer
Packer - Shale	0.00			4425.00	
Stubb	1.00			4426.00	
Perforations	27.00			4453.00	
Recorder	0.00	8846	Inside	4453.00	
Recorder	0.00	8737	Outside	4453.00	
Bullnose	5.00			4458.00	33.00 Anchor Tool

Total Tool Length: 57.00



**TRILOBITE
TESTING, INC**

DRILL STEM TEST REPORT

FLUID SUMMARY

Landmark Resources Inc.

7-17s-33w Scott,KS

1616 Voss Rd. STE 600
Houston TX 77057

Janzen #3-7

Job Ticket: 59170

DST#: 1

ATTN: Brad Rine

Test Start: 2014.10.17 @ 16:56:15

Mud and Cushion Information

Mud Type: Gel Chem

Cushion Type:

Oil API:

32 deg API

Mud Weight: 9.00 lb/gal

Cushion Length:

ft

Water Salinity:

0 ppm

Viscosity: 53.00 sec/qt

Cushion Volume:

bbl

Water Loss: 8.74 in³

Gas Cushion Type:

Resistivity: 0.00 ohm.m

Gas Cushion Pressure:

psig

Salinity: 6000.00 ppm

Filter Cake: 1.00 inches

Recovery Information

Recovery Table

Length ft	Description	Volume bbl
62.00	free oil	0.870
62.00	mco 20%m 80%o	0.870

Total Length: 124.00 ft Total Volume: 1.740 bbl

Num Fluid Samples: 0

Num Gas Bombs: 0

Serial #:

Laboratory Name:

Laboratory Location:

Recovery Comments: API= 32 @ 60

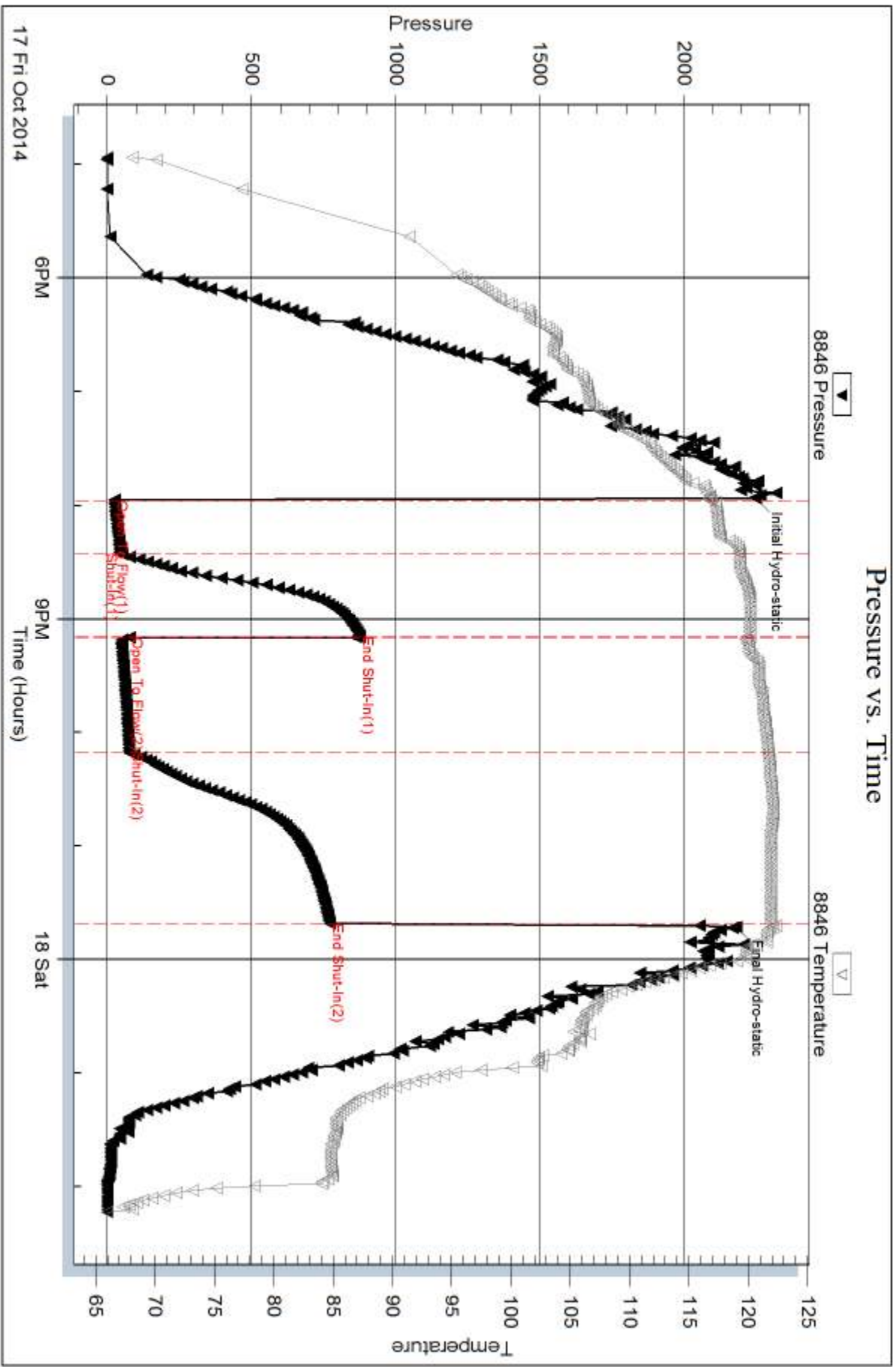
Serial #: 8846

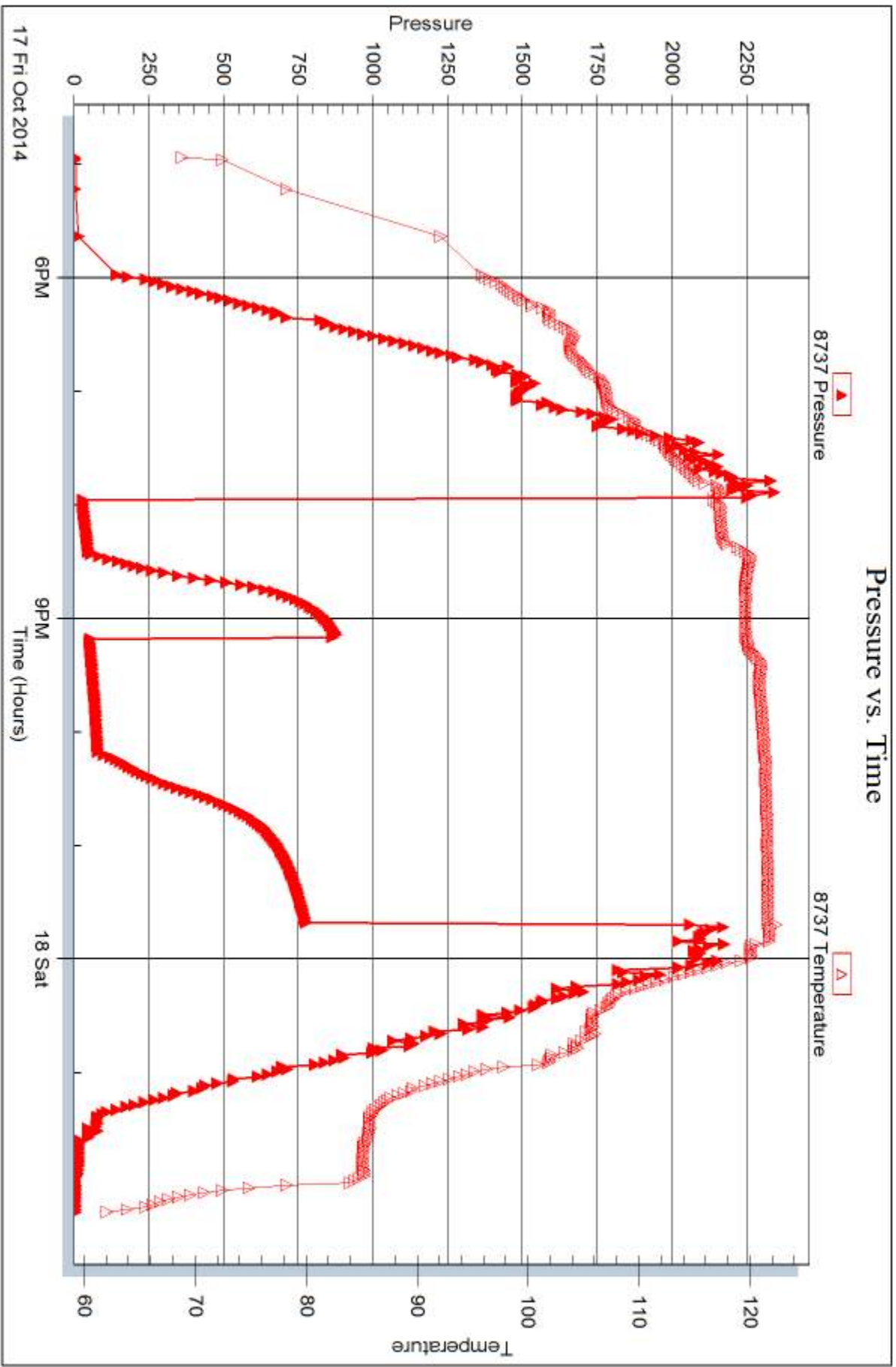
Inside

Landmark Resources Inc.

Janzen #3-7

DST Test Number: 1







DRILL STEM TEST REPORT

Prepared For: **Landmark Resources Inc.**

1616 Voss Rd. STE 600
Houston TX 77057

ATTN: Brad Rine

Janzen #3-7

7-17s-33w Scott,KS

Start Date: 2014.10.18 @ 13:10:15

End Date: 2014.10.18 @ 20:54:45

Job Ticket #: 59171 DST #: 2

Trilobite Testing, Inc
1515 Commerce Parkway Hays, KS 67601
ph: 785-625-4778 fax: 785-625-5620

Printed: 2014.10.22 @ 16:30:02



TRILOBITE TESTING, INC.

DRILL STEM TEST REPORT

Landmark Resources Inc.

7-17s-33w Scott,KS

1616 Voss Rd. STE 600
Houston TX 77057

Janzen #3-7

Job Ticket: 59171

DST#: 2

ATTN: Brad Rine

Test Start: 2014.10.18 @ 13:10:15

GENERAL INFORMATION:

Formation: **Altamont**

Deviated: No Whipstock: ft (KB)

Time Tool Opened: 15:52:30

Time Test Ended: 20:54:45

Test Type: Conventional Bottom Hole (Reset)

Tester: Mike Roberts

Unit No: 65

Interval: 4458.00 ft (KB) To 4500.00 ft (KB) (TVD)

Reference Elevations: 3089.00 ft (KB)

Total Depth: 4500.00 ft (KB) (TVD)

3079.00 ft (CF)

Hole Diameter: 7.88 inches Hole Condition: Fair

KB to GR/CF: 10.00 ft

Serial #: 8846 Inside

Press@RunDepth: 24.32 psig @ 4462.00 ft (KB)

Capacity: 8000.00 psig

Start Date: 2014.10.18 End Date: 2014.10.18

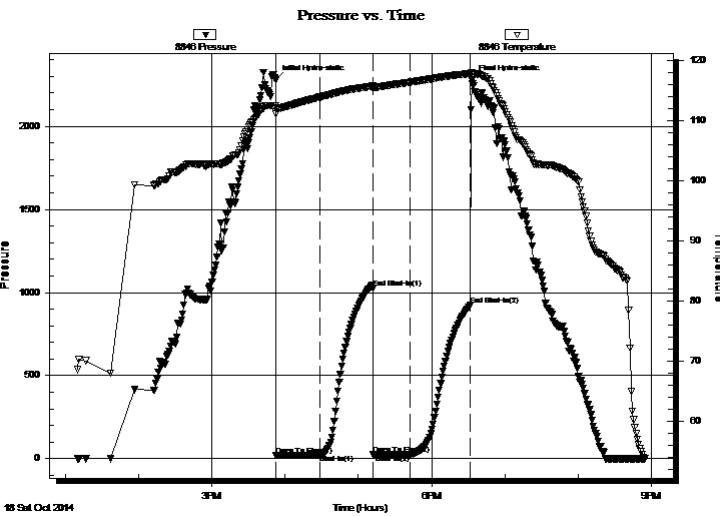
Last Calib.: 2014.10.18

Start Time: 13:10:15 End Time: 20:54:45

Time On Btm: 2014.10.18 @ 15:52:15

Time Off Btm: 2014.10.18 @ 18:32:45

TEST COMMENT: IF: Built to 1/8" blow
IS: No return blow
FF: No blow
FS: No return blow



PRESSURE SUMMARY

Time (Min.)	Pressure (psig)	Temp (deg F)	Annotation
0	2279.55	112.42	Initial Hydro-static
1	19.97	111.09	Open To Flow (1)
36	24.05	113.86	Shut-In(1)
80	1025.21	115.69	End Shut-In(1)
80	24.23	115.22	Open To Flow (2)
110	24.32	116.35	Shut-In(2)
160	922.88	117.79	End Shut-In(2)
161	2278.91	117.91	Final Hydro-static

Recovery

Length (ft)	Description	Volume (bbl)
20.00	mud w ith oil spots in tool	0.28

* Recovery from multiple tests

Gas Rates

Choke (inches)	Pressure (psig)	Gas Rate (MMcf/d)



TRILOBITE TESTING, INC

DRILL STEM TEST REPORT

Landmark Resources Inc.

7-17s-33w Scott,KS

1616 Voss Rd. STE 600
Houston TX 77057

Janzen #3-7

Job Ticket: 59171

DST#: 2

ATTN: Brad Rine

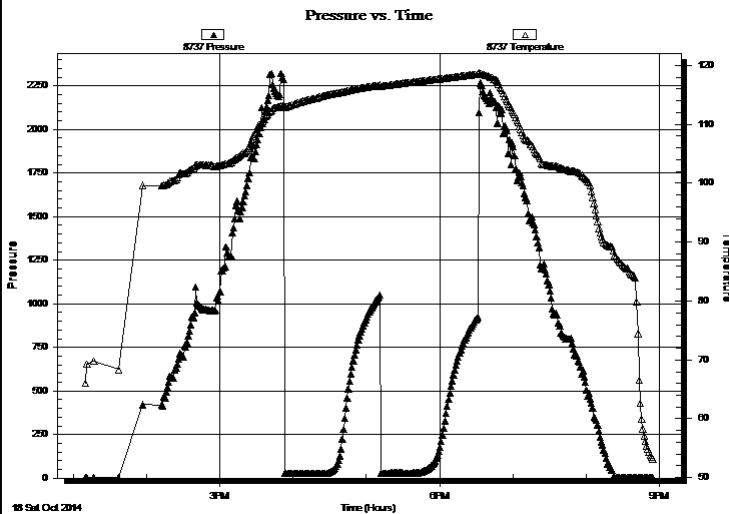
Test Start: 2014.10.18 @ 13:10:15

GENERAL INFORMATION:

Formation: Altamont			
Deviated: No Whipstock:	ft (KB)	Test Type: Conventional Bottom Hole (Reset)	
Time Tool Opened: 15:52:30		Tester: Mike Roberts	
Time Test Ended: 20:54:45		Unit No: 65	
Interval: 4458.00 ft (KB) To 4500.00 ft (KB) (TVD)		Reference Elevations: 3089.00 ft (KB)	
Total Depth: 4500.00 ft (KB) (TVD)		3079.00 ft (CF)	
Hole Diameter: 7.88 inches	Hole Condition: Fair	KB to GR/CF: 10.00 ft	

Serial #: 8737	Outside		
Press@RunDepth: psig @ 4462.00 ft (KB)	Capacity: 8000.00 psig		
Start Date: 2014.10.18	End Date: 2014.10.18	Last Calib.: 2014.10.18	
Start Time: 13:10:15	End Time: 20:54:45	Time On Btm:	
		Time Off Btm:	

TEST COMMENT: IF: Built to 1/8" blow
IS: No return blow
FF: No blow
FS: No return blow



PRESSURE SUMMARY

Time (Min.)	Pressure (psig)	Temp (deg F)	Annotation

Recovery

Length (ft)	Description	Volume (bbl)
20.00	mud with oil spots in tool	0.28

* Recovery from multiple tests

Gas Rates

Choke (inches)	Pressure (psig)	Gas Rate (MMcf/d)



**TRILOBITE
TESTING, INC**

DRILL STEM TEST REPORT

TOOL DIAGRAM

Landmark Resources Inc.

7-17s-33w Scott,KS

1616 Voss Rd. STE 600
Houston TX 77057

Janzen #3-7

Job Ticket: 59171

DST#: 2

ATTN: Brad Rine

Test Start: 2014.10.18 @ 13:10:15

Tool Information

Drill Pipe:	Length: 4439.00 ft	Diameter: 3.80 inches	Volume: 62.27 bbl	Tool Weight: 1500.00 lb
Heavy Wt. Pipe:	Length: 0.00 ft	Diameter: 0.00 inches	Volume: 0.00 bbl	Weight set on Packer: 25000.00 lb
Drill Collar:	Length: 0.00 ft	Diameter: 0.00 inches	Volume: 0.00 bbl	Weight to Pull Loose: 90000.00 lb
			<u>Total Volume: 62.27 bbl</u>	Tool Chased 0.00 ft
Drill Pipe Above KB:	9.00 ft			String Weight: Initial 70000.00 lb
Depth to Top Packer:	4458.00 ft			Final 70000.00 lb
Depth to Bottom Packer:	ft			
Interval between Packers:	42.00 ft			
Tool Length:	70.00 ft			
Number of Packers:	2	Diameter: 6.75 inches		

Tool Comments:

Tool Description

Tool Description	Length (ft)	Serial No.	Position	Depth (ft)	Accum. Lengths
Change Over Sub	1.00			4431.00	
Shut In Tool	5.00			4436.00	
Hydraulic tool	5.00			4441.00	
Jars	5.00			4446.00	
Safety Joint	3.00			4449.00	
Packer	5.00			4454.00	28.00 Bottom Of Top Packer
Packer	4.00			4458.00	
Stubb	1.00			4459.00	
Perforations	3.00			4462.00	
Recorder	0.00	8846	Inside	4462.00	
Recorder	0.00	8737	Outside	4462.00	
Change Over Sub	1.00			4463.00	
Blank Spacing	31.00			4494.00	
Change Over Sub	1.00			4495.00	
Bullnose	5.00			4500.00	42.00 Bottom Packers & Anchor

Total Tool Length: 70.00



**TRILOBITE
TESTING, INC**

DRILL STEM TEST REPORT

FLUID SUMMARY

Landmark Resources Inc.

7-17s-33w Scott,KS

1616 Voss Rd. STE 600
Houston TX 77057

Janzen #3-7

Job Ticket: 59171

DST#: 2

ATTN: Brad Rine

Test Start: 2014.10.18 @ 13:10:15

Mud and Cushion Information

Mud Type: Gel Chem

Cushion Type:

Oil API:

0 deg API

Mud Weight: 9.00 lb/gal

Cushion Length:

ft

Water Salinity:

0 ppm

Viscosity: 67.00 sec/qt

Cushion Volume:

bbbl

Water Loss: 10.34 in³

Gas Cushion Type:

Resistivity: 0.00 ohm.m

Gas Cushion Pressure:

psig

Salinity: 8100.00 ppm

Filter Cake: 1.00 inches

Recovery Information

Recovery Table

Length ft	Description	Volume bbl
20.00	mud w ith oil spots in tool	0.281

Total Length: 20.00 ft Total Volume: 0.281 bbl

Num Fluid Samples: 0

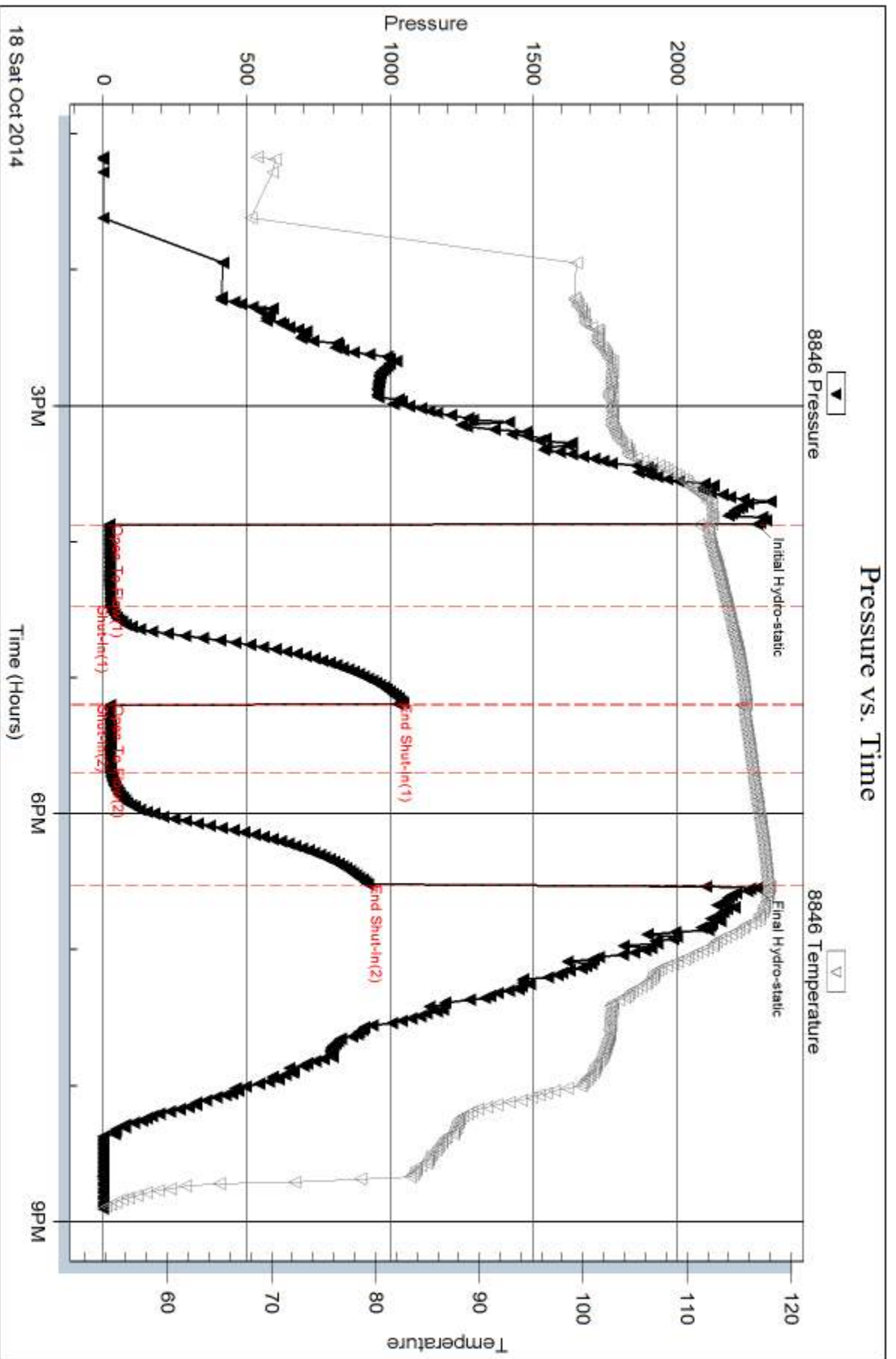
Num Gas Bombs: 0

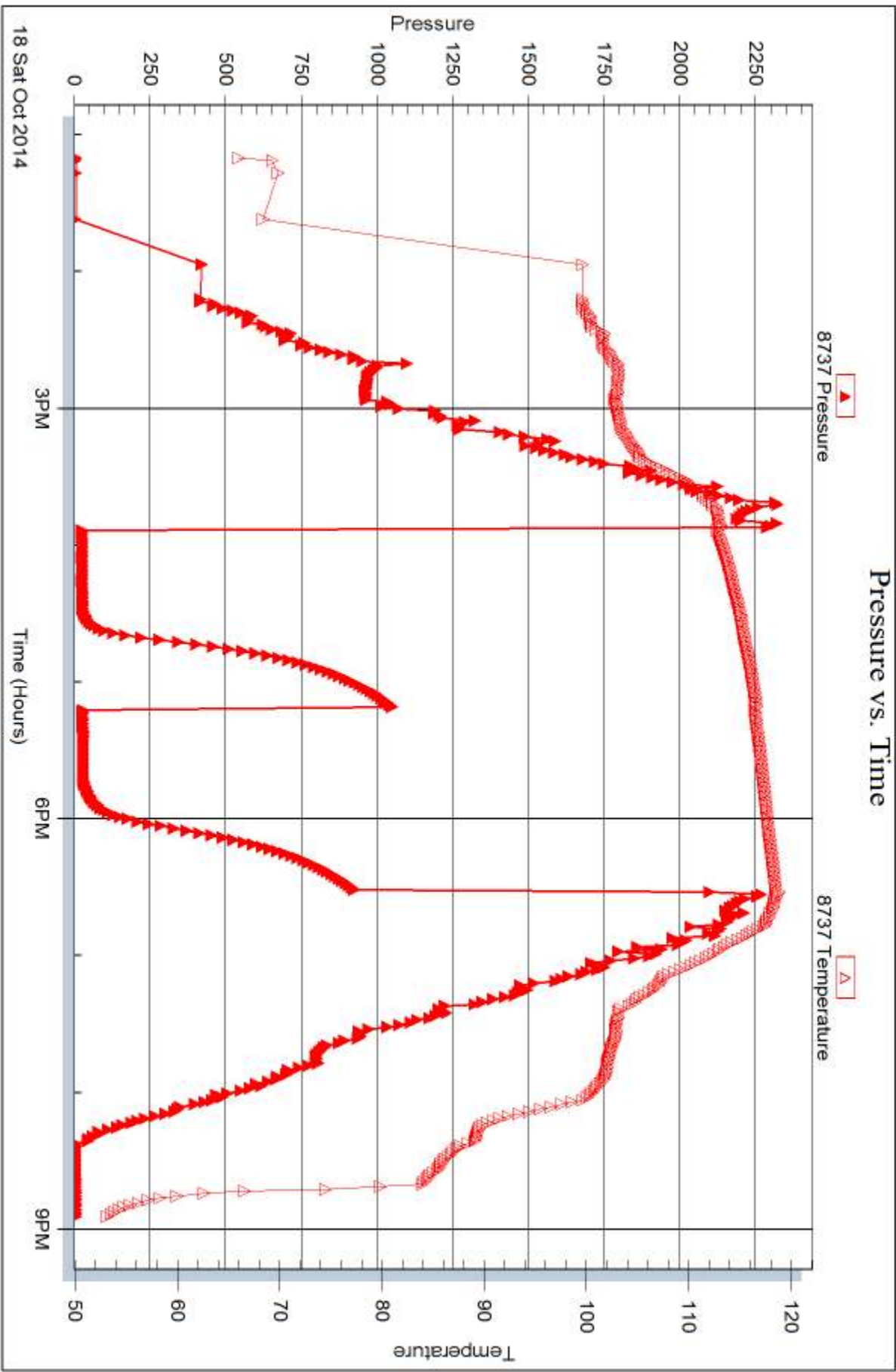
Serial #:

Laboratory Name:

Laboratory Location:

Recovery Comments:







DRILL STEM TEST REPORT

Prepared For: **Landmark Resources Inc.**

1616 Voss Rd. STE 600
Houston TX 77057

ATTN: Brad Rine

Janzen #3-7

7-17s-33w Scott,KS

Start Date: 2014.10.19 @ 18:10:15

End Date: 2014.10.20 @ 02:38:45

Job Ticket #: 59172 DST #: 3

Trilobite Testing, Inc
1515 Commerce Parkway Hays, KS 67601
ph: 785-625-4778 fax: 785-625-5620

Printed: 2014.10.22 @ 16:29:40



**TRILOBITE
TESTING, INC**

DRILL STEM TEST REPORT

Landmark Resources Inc.

7-17s-33w Scott,KS

1616 Voss Rd. STE 600
Houston TX 77057

Janzen #3-7

Job Ticket: 59172

DST#: 3

ATTN: Brad Rine

Test Start: 2014.10.19 @ 18:10:15

GENERAL INFORMATION:

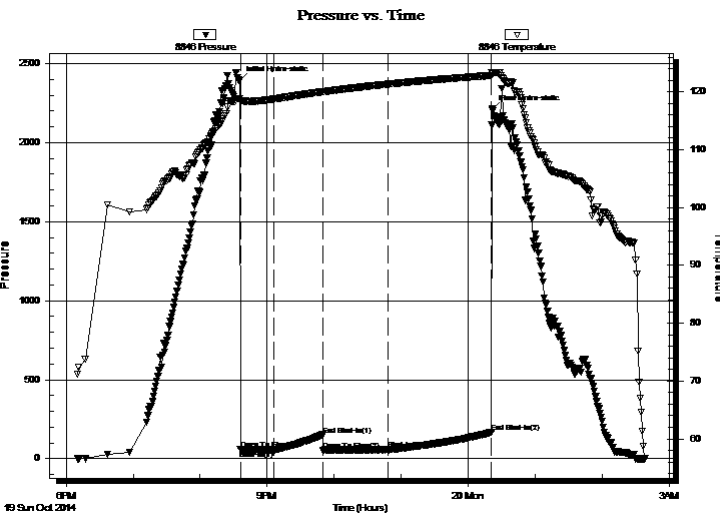
Formation: **Pawnee - Ft.Scott**
 Deviated: No Whipstock: ft (KB)
 Time Tool Opened: 20:36:00
 Time Test Ended: 02:38:45
 Interval: **4509.00 ft (KB) To 4610.00 ft (KB) (TVD)**
 Total Depth: 4610.00 ft (KB) (TVD)
 Hole Diameter: 7.88 inches Hole Condition: Fair
 Test Type: Conventional Bottom Hole (Reset)
 Tester: Mike Roberts
 Unit No: 65
 Reference Elevations: 3089.00 ft (KB)
 3079.00 ft (CF)
 KB to GR/CF: 10.00 ft

Serial #: 8846

Inside

Press@RunDepth: 58.47 psig @ 4515.00 ft (KB) Capacity: 8000.00 psig
 Start Date: 2014.10.19 End Date: 2014.10.20 Last Calib.: 2014.10.20
 Start Time: 18:10:15 End Time: 02:38:45 Time On Btm: 2014.10.19 @ 20:35:15
 Time Off Btm: 2014.10.20 @ 00:21:45

TEST COMMENT: IF: Built to 1/2" blow
 IS: No return blow
 FF: Built to 3" blow
 FS: No return blow



PRESSURE SUMMARY

Time (Min.)	Pressure (psig)	Temp (deg F)	Annotation
0	2392.99	118.85	Initial Hydro-static
1	58.38	118.53	Open To Flow (1)
31	55.31	118.76	Shut-In(1)
75	152.11	120.02	End Shut-In(1)
75	52.26	120.01	Open To Flow (2)
134	58.47	121.33	Shut-In(2)
226	167.38	122.83	End Shut-In(2)
227	2210.70	123.21	Final Hydro-static

Recovery

Length (ft)	Description	Volume (bbl)
15.00	mud 100% m (thick mud)	0.21

* Recovery from multiple tests

Gas Rates

	Choke (inches)	Pressure (psig)	Gas Rate (MMcf/d)



DRILL STEM TEST REPORT

Landmark Resources Inc.
1616 Voss Rd. STE 600
Houston TX 77057
ATTN: Brad Rine

7-17s-33w Scott,KS

Janzen #3-7

Job Ticket: 59172

DST#: 3

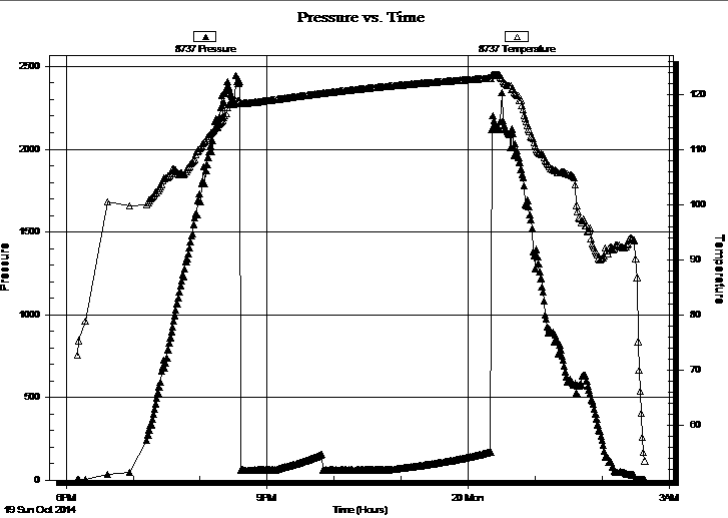
Test Start: 2014.10.19 @ 18:10:15

GENERAL INFORMATION:

Formation:	Pawnee - Ft.Scott		
Deviated:	No Whipstock:	ft (KB)	Test Type: Conventional Bottom Hole (Reset)
Time Tool Opened:	20:36:00		Tester: Mike Roberts
Time Test Ended:	02:38:45		Unit No: 65
Interval:	4509.00 ft (KB) To 4610.00 ft (KB) (TVD)		Reference Elevations: 3089.00 ft (KB)
Total Depth:	4610.00 ft (KB) (TVD)		3079.00 ft (CF)
Hole Diameter:	7.88 inches	Hole Condition: Fair	KB to GR/CF: 10.00 ft

Serial #: 8737	Outside				
Press@RunDepth:	psig @	4515.00 ft (KB)	Capacity:	8000.00 psig	
Start Date:	2014.10.19	End Date:	2014.10.20	Last Calib.:	2014.10.20
Start Time:	18:10:15	End Time:	02:38:45	Time On Btm:	
				Time Off Btm:	

TEST COMMENT: IF:Built to 1/2" blow
IS:No return blow
FF:Built to 3" blow
FS:No return blow



PRESSURE SUMMARY			
Time (Min.)	Pressure (psig)	Temp (deg F)	Annotation

Recovery		
Length (ft)	Description	Volume (bbl)
15.00	mud 100% m (thick mud)	0.21

* Recovery from multiple tests

Gas Rates			
	Choke (inches)	Pressure (psig)	Gas Rate (MMcf/d)



**TRILOBITE
TESTING, INC.**

DRILL STEM TEST REPORT

TOOL DIAGRAM

Landmark Resources Inc.

7-17s-33w Scott,KS

1616 Voss Rd. STE 600
Houston TX 77057

Janzen #3-7

Job Ticket: 59172

DST#: 3

ATTN: Brad Rine

Test Start: 2014.10.19 @ 18:10:15

Tool Information

Drill Pipe:	Length: 4501.00 ft	Diameter: 3.80 inches	Volume: 63.14 bbl	Tool Weight: 1500.00 lb
Heavy Wt. Pipe:	Length: 0.00 ft	Diameter: 0.00 inches	Volume: 0.00 bbl	Weight set on Packer: 25000.00 lb
Drill Collar:	Length: 0.00 ft	Diameter: 0.00 inches	Volume: 0.00 bbl	Weight to Pull Loose: 90000.00 lb
			<u>Total Volume: 63.14 bbl</u>	Tool Chased 0.00 ft
Drill Pipe Above KB:	20.00 ft			String Weight: Initial 80000.00 lb
Depth to Top Packer:	4509.00 ft			Final 81000.00 lb
Depth to Bottom Packer:	ft			
Interval between Packers:	101.00 ft			
Tool Length:	129.00 ft			
Number of Packers:	2	Diameter: 6.75 inches		

Tool Comments:

Tool Description

Tool Description	Length (ft)	Serial No.	Position	Depth (ft)	Accum. Lengths
Change Over Sub	1.00			4482.00	
Shut In Tool	5.00			4487.00	
Hydraulic tool	5.00			4492.00	
Jars	5.00			4497.00	
Safety Joint	3.00			4500.00	
Packer	5.00			4505.00	28.00 Bottom Of Top Packer
Packer	4.00			4509.00	
Stubb	1.00			4510.00	
Perforations	5.00			4515.00	
Recorder	0.00	8846	Inside	4515.00	
Recorder	0.00	8737	Outside	4515.00	
Change Over Sub	1.00			4516.00	
Blank Spacing	63.00			4579.00	
Change Over Sub	1.00			4580.00	
Perforations	25.00			4605.00	
Bullnose	5.00			4610.00	101.00 Bottom Packers & Anchor
Total Tool Length:	129.00				



**TRILOBITE
TESTING, INC**

DRILL STEM TEST REPORT

FLUID SUMMARY

Landmark Resources Inc.

7-17s-33w Scott,KS

1616 Voss Rd. STE 600
Houston TX 77057

Janzen #3-7

Job Ticket: 59172

DST#: 3

ATTN: Brad Rine

Test Start: 2014.10.19 @ 18:10:15

Mud and Cushion Information

Mud Type: Gel Chem

Cushion Type:

Oil API:

0 deg API

Mud Weight: 9.00 lb/gal

Cushion Length:

ft

Water Salinity:

0 ppm

Viscosity: 60.00 sec/qt

Cushion Volume:

bbbl

Water Loss: 10.26 in³

Gas Cushion Type:

Resistivity: 0.00 ohm.m

Gas Cushion Pressure:

psig

Salinity: 8500.00 ppm

Filter Cake: 1.00 inches

Recovery Information

Recovery Table

Length ft	Description	Volume bbl
15.00	mud 100%m (thick mud)	0.210

Total Length: 15.00 ft Total Volume: 0.210 bbl

Num Fluid Samples: 0

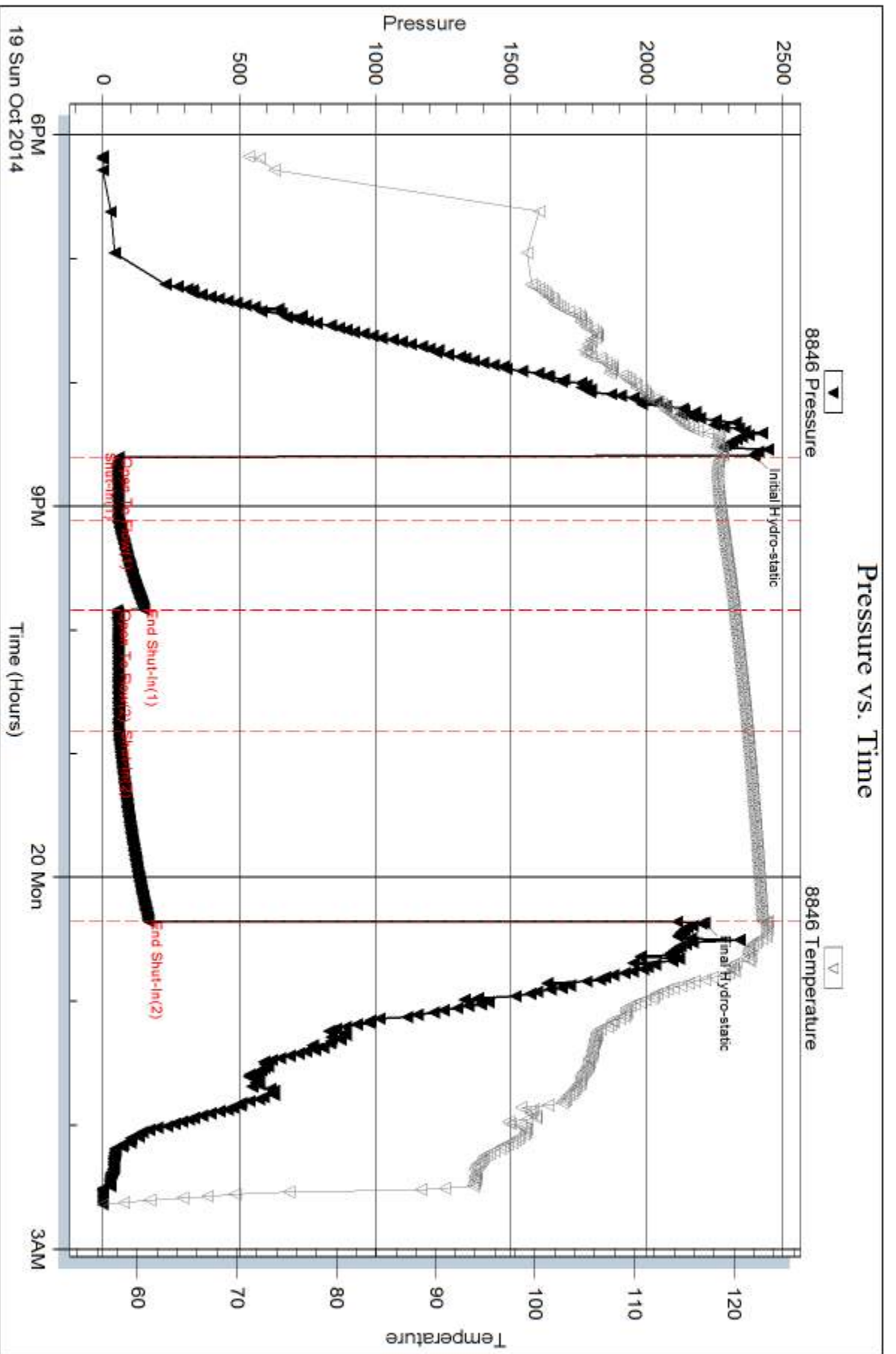
Num Gas Bombs: 0

Serial #:

Laboratory Name:

Laboratory Location:

Recovery Comments:

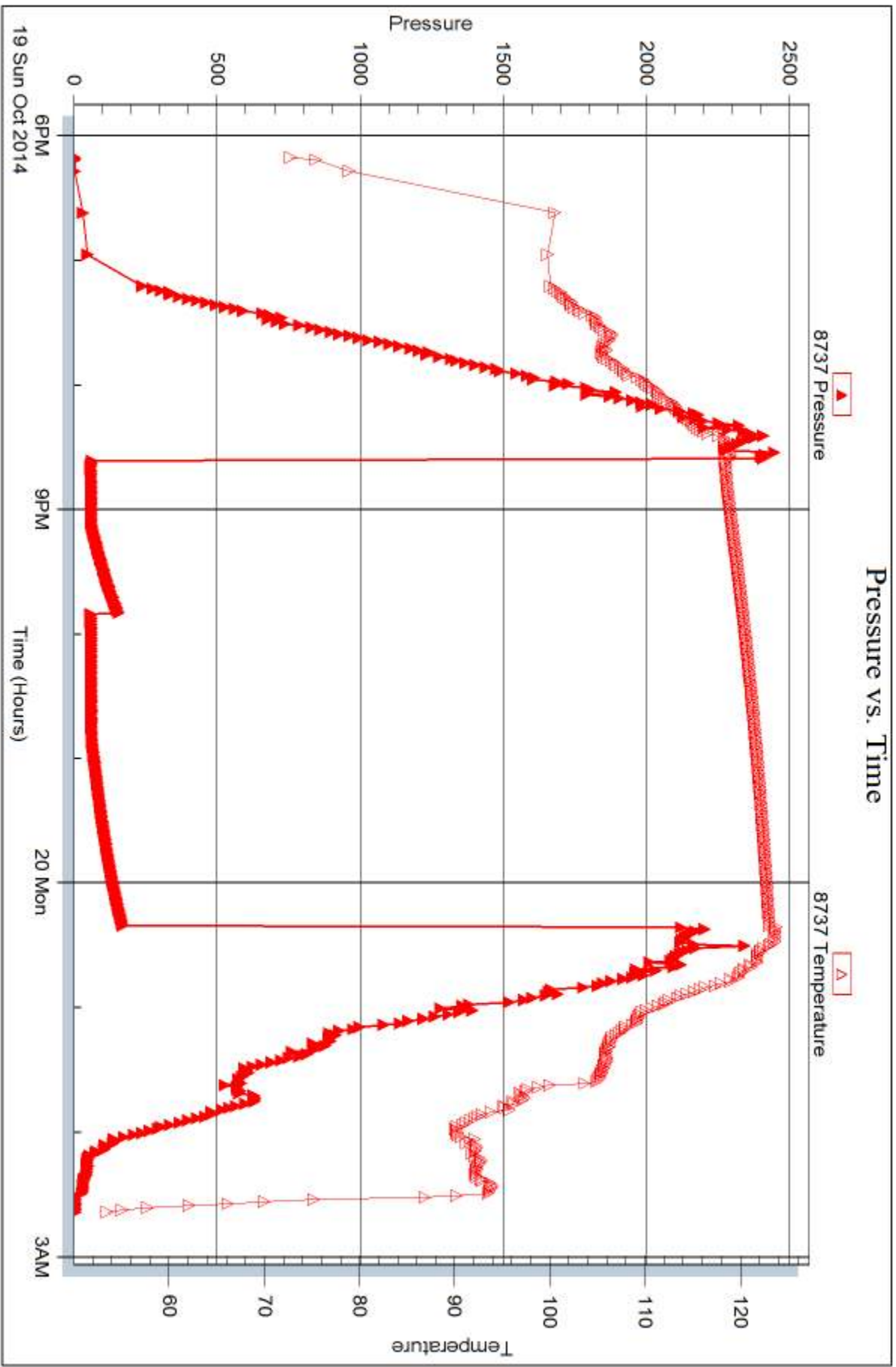


Serial #: 8737

Outside Landmark Resources Inc.

Janzen #3-7

DST Test Number: 3





DRILL STEM TEST REPORT

Prepared For: **Landmark Resources Inc.**

1616 Voss Rd. STE 600
Houston TX 77057

ATTN: Brad Rine

Janzen #3-7

7-17s-33w Scott,KS

Start Date: 2014.10.20 @ 19:42:15

End Date: 2014.10.21 @ 02:47:30

Job Ticket #: 59173 DST #: 4

Trilobite Testing, Inc
1515 Commerce Parkway Hays, KS 67601
ph: 785-625-4778 fax: 785-625-5620

Printed: 2014.10.22 @ 16:28:50



TRILOBITE TESTING, INC

DRILL STEM TEST REPORT

Landmark Resources Inc.

7-17s-33w Scott,KS

1616 Voss Rd. STE 600
Houston TX 77057

Janzen #3-7

Job Ticket: 59173

DST#: 4

ATTN: Brad Rine

Test Start: 2014.10.20 @ 19:42:15

GENERAL INFORMATION:

Formation: **Johnson**

Deviated: No Whipstock: ft (KB)

Time Tool Opened: 22:03:00

Time Test Ended: 02:47:30

Test Type: Conventional Bottom Hole (Reset)

Tester: Mike Roberts

Unit No: 65

Interval: 4614.00 ft (KB) To 4715.00 ft (KB) (TVD)

Reference Elevations: 3089.00 ft (KB)

Total Depth: 4715.00 ft (KB) (TVD)

3079.00 ft (CF)

Hole Diameter: 7.88 inches Hole Condition: Fair

KB to GR/CF: 10.00 ft

Serial #: 8846

Inside

Press@RunDepth: 72.04 psig @ 4620.00 ft (KB)

Capacity: 8000.00 psig

Start Date: 2014.10.20

End Date:

2014.10.21

Last Calib.: 2014.10.21

Start Time: 19:42:15

End Time:

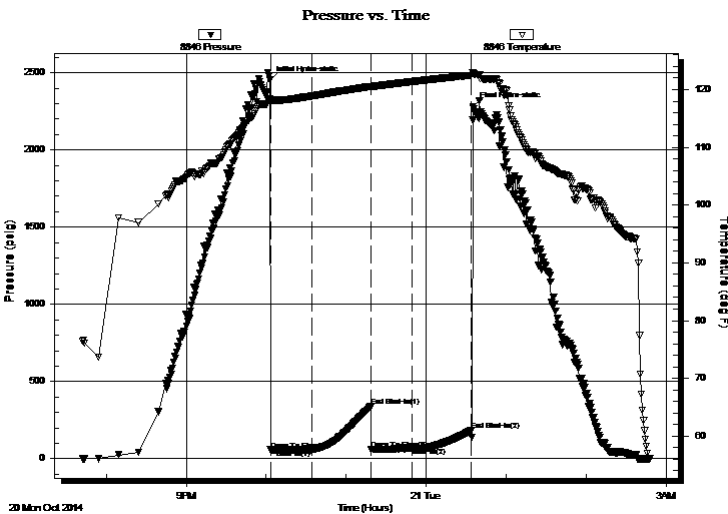
02:47:30

Time On Btm: 2014.10.20 @ 22:02:45

Time Off Btm: 2014.10.21 @ 00:35:00

TEST COMMENT: IF: Built to 1" blow
IS: No return blow
FF: No blow
FS: No return blow

PRESSURE SUMMARY



Time (Min.)	Pressure (psig)	Temp (deg F)	Annotation
0	2451.33	118.49	Initial Hydro-static
1	58.02	117.75	Open To Flow (1)
31	58.51	118.87	Shut-In(1)
76	338.44	120.54	End Shut-In(1)
76	59.39	120.44	Open To Flow (2)
107	72.04	121.37	Shut-In(2)
151	183.84	122.47	End Shut-In(2)
153	2278.79	122.87	Final Hydro-static

Recovery

Length (ft)	Description	Volume (bbl)
5.00	mud 100%m	0.07

* Recovery from multiple tests

Gas Rates

Choke (inches)	Pressure (psig)	Gas Rate (MMcf/d)



TRILOBITE TESTING, INC

DRILL STEM TEST REPORT

Landmark Resources Inc.

7-17s-33w Scott,KS

1616 Voss Rd. STE 600
Houston TX 77057

Janzen #3-7

Job Ticket: 59173

DST#: 4

ATTN: Brad Rine

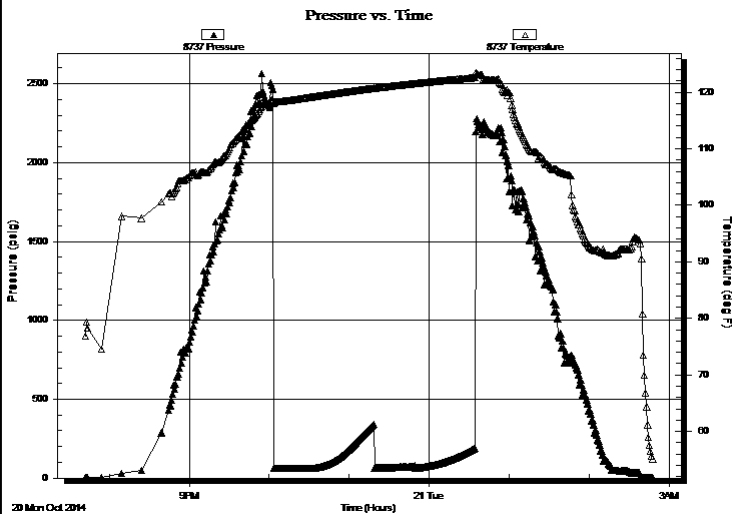
Test Start: 2014.10.20 @ 19:42:15

GENERAL INFORMATION:

Formation: **Johnson**
 Deviated: No Whipstock: ft (KB)
 Time Tool Opened: 22:03:00
 Time Test Ended: 02:47:30
 Interval: **4614.00 ft (KB) To 4715.00 ft (KB) (TVD)**
 Total Depth: 4715.00 ft (KB) (TVD)
 Hole Diameter: 7.88 inches Hole Condition: Fair
 Test Type: Conventional Bottom Hole (Reset)
 Tester: Mike Roberts
 Unit No: 65
 Reference Elevations: 3089.00 ft (KB)
 3079.00 ft (CF)
 KB to GR/CF: 10.00 ft

Serial #: 8737 **Outside**
 Press@RunDepth: psig @ 4620.00 ft (KB) Capacity: 8000.00 psig
 Start Date: 2014.10.20 End Date: 2014.10.21 Last Calib.: 2014.10.21
 Start Time: 19:42:15 End Time: 02:47:30 Time On Btm:
 Time Off Btm:

TEST COMMENT: IF: Built to 1" blow
 IS: No return blow
 FF: No blow
 FS: No return blow



PRESSURE SUMMARY

Time (Min.)	Pressure (psig)	Temp (deg F)	Annotation

Recovery

Length (ft)	Description	Volume (bbl)
5.00	mud 100% m	0.07

* Recovery from multiple tests

Gas Rates

Choke (inches)	Pressure (psig)	Gas Rate (MMcf/d)



**TRILOBITE
TESTING, INC**

DRILL STEM TEST REPORT

TOOL DIAGRAM

Landmark Resources Inc.

7-17s-33w Scott,KS

1616 Voss Rd. STE 600
Houston TX 77057

Janzen #3-7

Job Ticket: 59173

DST#: 4

ATTN: Brad Rine

Test Start: 2014.10.20 @ 19:42:15

Tool Information

Drill Pipe:	Length: 4596.00 ft	Diameter: 3.80 inches	Volume: 64.47 bbl	Tool Weight: 1500.00 lb
Heavy Wt. Pipe:	Length: 0.00 ft	Diameter: 0.00 inches	Volume: 0.00 bbl	Weight set on Packer: 25000.00 lb
Drill Collar:	Length: 0.00 ft	Diameter: 0.00 inches	Volume: 0.00 bbl	Weight to Pull Loose: 90000.00 lb
			<u>Total Volume: 64.47 bbl</u>	Tool Chased 0.00 ft
Drill Pipe Above KB:	10.00 ft			String Weight: Initial 75000.00 lb
Depth to Top Packer:	4614.00 ft			Final 75000.00 lb
Depth to Bottom Packer:	ft			
Interval between Packers:	101.00 ft			
Tool Length:	129.00 ft			
Number of Packers:	2	Diameter: 6.75 inches		

Tool Comments:

Tool Description

Tool Description	Length (ft)	Serial No.	Position	Depth (ft)	Accum. Lengths
Change Over Sub	1.00			4587.00	
Shut In Tool	5.00			4592.00	
Hydraulic tool	5.00			4597.00	
Jars	5.00			4602.00	
Safety Joint	3.00			4605.00	
Packer	5.00			4610.00	28.00 Bottom Of Top Packer
Packer	4.00			4614.00	
Stubb	1.00			4615.00	
Perforations	5.00			4620.00	
Recorder	0.00	8846	Inside	4620.00	
Recorder	0.00	8737	Outside	4620.00	
Change Over Sub	1.00			4621.00	
Blank Spacing	63.00			4684.00	
Change Over Sub	1.00			4685.00	
Perforations	25.00			4710.00	
Bullnose	5.00			4715.00	101.00 Bottom Packers & Anchor
Total Tool Length:	129.00				



**TRILOBITE
TESTING, INC**

DRILL STEM TEST REPORT

FLUID SUMMARY

Landmark Resources Inc.

7-17s-33w Scott,KS

1616 Voss Rd. STE 600
Houston TX 77057

Janzen #3-7

Job Ticket: 59173

DST#: 4

ATTN: Brad Rine

Test Start: 2014.10.20 @ 19:42:15

Mud and Cushion Information

Mud Type: Gel Chem

Cushion Type:

Oil API:

0 deg API

Mud Weight: 9.00 lb/gal

Cushion Length:

ft

Water Salinity:

0 ppm

Viscosity: 65.00 sec/qt

Cushion Volume:

bbbl

Water Loss: 10.78 in³

Gas Cushion Type:

Resistivity: 0.00 ohm.m

Gas Cushion Pressure:

psig

Salinity: 9300.00 ppm

Filter Cake: 1.00 inches

Recovery Information

Recovery Table

Length ft	Description	Volume bbl
5.00	mud 100%m	0.070

Total Length: 5.00 ft Total Volume: 0.070 bbl

Num Fluid Samples: 0

Num Gas Bombs: 0

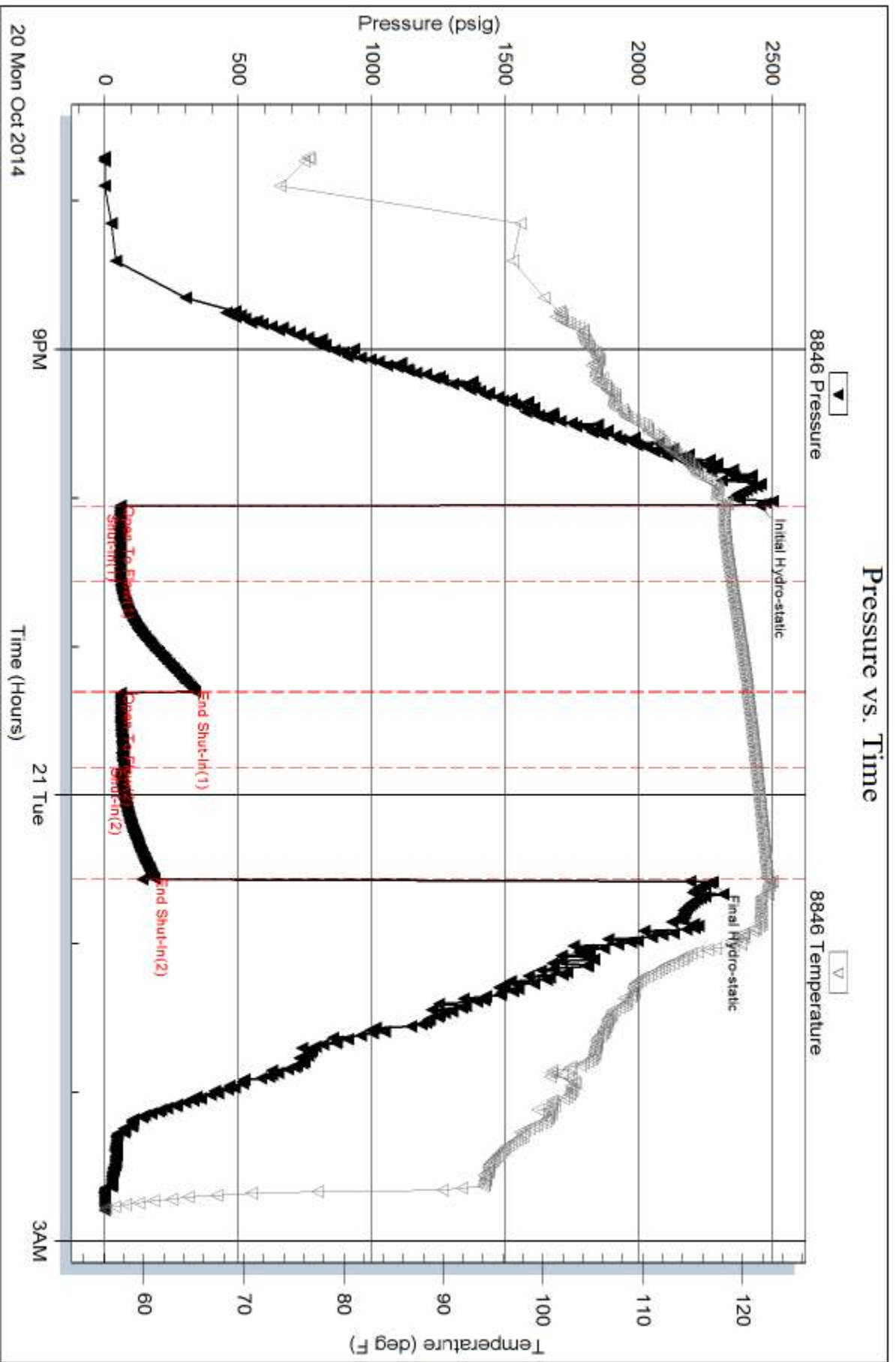
Serial #:

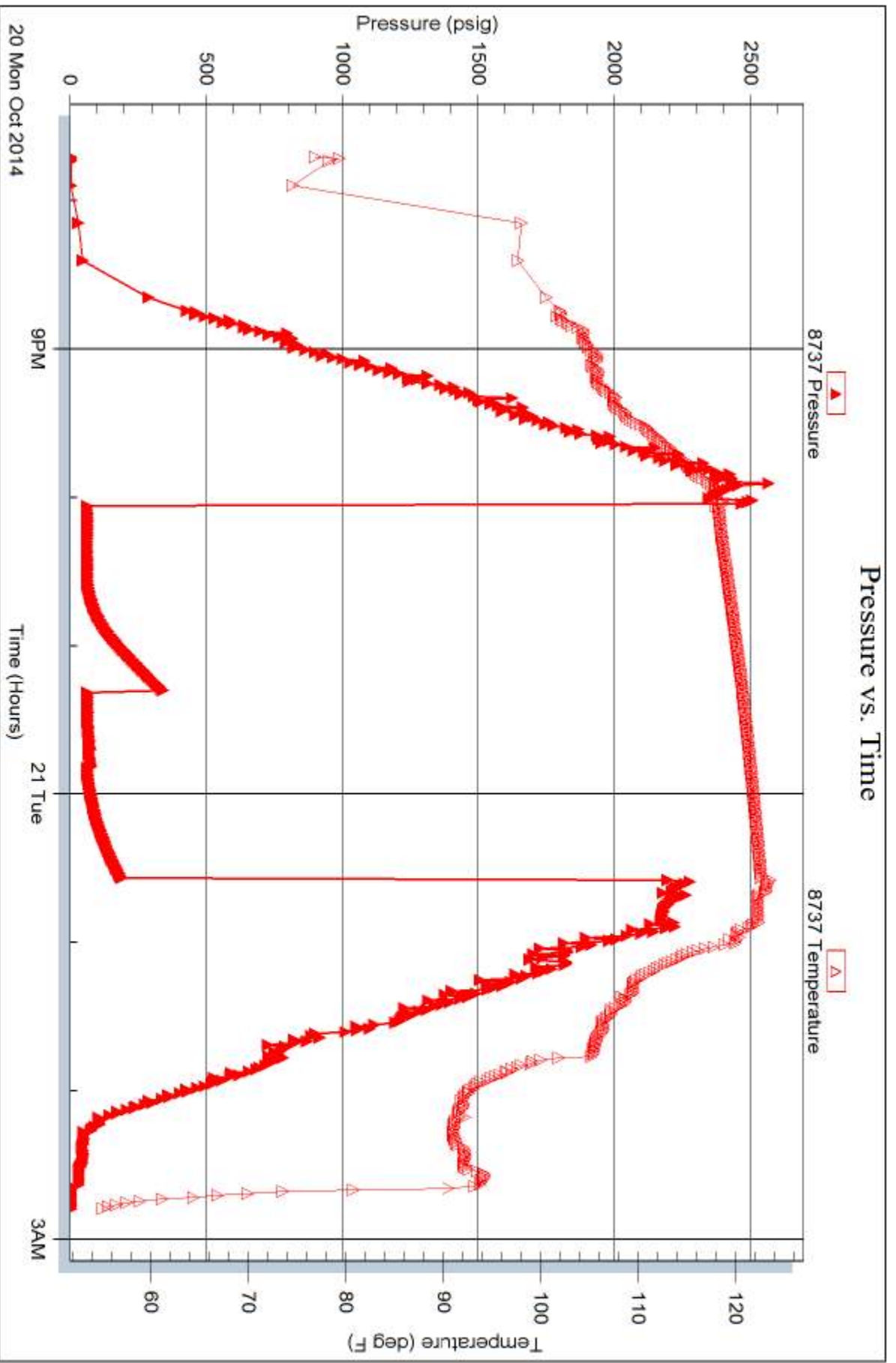
Laboratory Name:

Laboratory Location:

Recovery Comments:

Pressure vs. Time







TRILOBITE TESTING INC.

1515 Commerce Parkway • Hays, Kansas 67601

Test Ticket

NO. 59170

4/10

Well Name & No. Janzen 3-7 Test No. 1 Date 10-17-14
 Company Landmark Resources Inc. Elevation 3089 KB 3079 GL
 Address 1616 Voss Rd STE 600 Houston TX 77057
 Co. Rep / Geo. Brad Rine Rig Val Rig 1
 Location: Sec. 7 Twp. 17S Rge 33W Co. SCOTT State KS

Interval Tested 4425-4458 Zone Tested Marmaton
 Anchor Length 33 Drill Pipe Run 4411 Mud Wt. 9.3
 Top Packer Depth 4420 Drill Collars Run ∅ Vis 53
 Bottom Packer Depth 4425 Wt. Pipe Run ∅ WL 8.8
 Total Depth 4458 Chlorides 6000 ppm System LCM 1

Blow Description IF: Built to 9" Blow
IS: No Return Blow
FF: BOB IN 35 Min
FS: No Return Blow

Rec	Feet of	%gas	%oil	%water	%mud
<u>62</u>	<u>Free Ort</u>		<u>100</u>		
<u>62</u>	<u>MCO</u>		<u>80</u>	<u>20</u>	
Rec Total	<u>124</u> BHT <u>125</u>	Gravity <u>32</u>	API RW <u>—</u>	@ <u>—</u> °F	Chlorides <u>—</u> ppm

(A) Initial Hydrostatic	<u>2249</u>	<input checked="" type="checkbox"/> Test	<u>1250.00</u>	T-On Location	<u>14:50</u>
(B) First Initial Flow	<u>24</u>	<input checked="" type="checkbox"/> Jars	<u>250.00</u>	T-Started	<u>16:56</u>
(C) First Final Flow	<u>44</u>	<input checked="" type="checkbox"/> Safety Joint	<u>75.00</u>	T-Open	<u>19:55</u>
(D) Initial Shut-In	<u>875</u>	<input checked="" type="checkbox"/> Circ Sub	<u>NC</u>	T-Pulled	<u>23:40</u>
(E) Second Initial Flow	<u>74</u>	<input type="checkbox"/> Hourly Standby		T-Out	<u>02:13</u>
(F) Second Final Flow	<u>75</u>	<input checked="" type="checkbox"/> Mileage	<u>40 RT = 62.00</u>	Comments	
(G) Final Shut-In	<u>770</u>	<input type="checkbox"/> Sampler			
(H) Final Hydrostatic	<u>2181</u>	<input type="checkbox"/> Straddle			

<input checked="" type="checkbox"/> Shale Packer	<u>250.00</u>	<input type="checkbox"/> Ruined Shale Packer	
<input type="checkbox"/> Extra Packer		<input type="checkbox"/> Ruined Packer	
<input type="checkbox"/> Extra Recorder		<input type="checkbox"/> Extra Copies	
<input type="checkbox"/> Day Standby		Sub Total	<u>0</u>
<input type="checkbox"/> Accessibility		Total	<u>1887</u>
Sub Total	<u>\$1887.00/-</u>	MP/DST Disc't	

Approved By Brad Rine Our Representative Mike Roberts

Trilobite Testing Inc. shall not be liable for damaged of any kind of the property or personnel of the one for whom a test is made, or for any loss suffered or sustained, directly or indirectly, through the use of its equipment, or its statements or opinion concerning the results of any test, tools lost or damaged in the hole shall be paid for at cost by the party for whom the test is made.



TRILOBITE TESTING INC.

1515 Commerce Parkway • Hays, Kansas 67601

Test Ticket

NO. 59171

Well Name & No. Janzen 3-7 Test No. 2 Date 10-18-14
 Company Landmark Resources Inc. Elevation 3089 KB 3079 GL
 Address 1614 VOSS Rd STE 600 Houston TX 77057
 Co. Rep / Geo. Brad Rine Rig Val#1
 Location: Sec. 7 Twp. 17S Rge. 33W Co. SCOTT State _____

Interval Tested 4458-4500 Zone Tested Allamont
 Anchor Length 42 Drill Pipe Run 4439 Mud Wt. 9.3
 Top Packer Depth 4453 Drill Collars Run Ø Vis 67
 Bottom Packer Depth 4458 Wt. Pipe Run Ø WL 10.4
 Total Depth 4500 Chlorides 8100 ppm System LCM 1

Blow Description IF: Built to 1/8" Blow
IS: No Return Blow
FF: No Blow
FS: No Return Blow

Rec	Feet of	%gas	%oil	%water	%mud
<u>20</u>	<u>MUD with oil spots in tool</u>			<u>100</u>	
Rec	Feet of	%gas	%oil	%water	%mud
Rec	Feet of	%gas	%oil	%water	%mud
Rec	Feet of	%gas	%oil	%water	%mud

Rec Total 20 BHT 117 Gravity _____ API RW _____ @ _____ °F Chlorides _____ ppm

(A) Initial Hydrostatic <u>2279</u>	<input checked="" type="checkbox"/> Test <u>1250.00</u>	T-On Location <u>13:00</u>
(B) First Initial Flow <u>19</u>	<input checked="" type="checkbox"/> Jars <u>250.00</u>	T-Started <u>13:10</u>
(C) First Final Flow <u>24</u>	<input checked="" type="checkbox"/> Safety Joint <u>75.00</u>	T-Open <u>15:52</u>
(D) Initial Shut-In <u>1025</u>	<input checked="" type="checkbox"/> Circ Sub <u>NC</u>	T-Pulled <u>18:27</u>
(E) Second Initial Flow <u>24</u>	<input type="checkbox"/> Hourly Standby _____	T-Out <u>20:54</u>
(F) Second Final Flow <u>24</u>	<input checked="" type="checkbox"/> Mileage <u>40 RT 62.00</u>	Comments _____
(G) Final Shut-In <u>922</u>	<input type="checkbox"/> Sampler _____	<input type="checkbox"/> Ruined Shale Packer _____
(H) Final Hydrostatic <u>2278</u>	<input type="checkbox"/> Straddle _____	<input type="checkbox"/> Ruined Packer _____

Initial Open 30
 Initial Shut-In 45
 Final Flow 30
 Final Shut-In 45

Sub Total 0
 Total 1637
 MP/DST Disc't _____

Sub Total \$1637.00

Approved By Brad Rine Our Representative Mike Rolt

Trilobite Testing Inc. shall not be liable for damaged of any kind of the property or personnel of the one for whom a test is made, or for any loss suffered or sustained, directly or indirectly, through the use of its equipment, or its statements or opinion concerning the results of any test, tools lost or damaged in the hole shall be paid for at cost by the party for whom the test is made.



TRILOBITE TESTING INC.

1515 Commerce Parkway • Hays, Kansas 67601

Test Ticket

NO. 59172

Well Name & No. Janzen 3-7 Test No. 3 Date 10-19-14
 Company Landmark Resources Inc Elevation 3089 KB 3079 GL
 Address 1616 VOSS Rd STE 600 Houston TX 77057
 Co. Rep / Geo. Brad Rive Rig Val #1
 Location: Sec. 7 Twp. 17S Rge. 33W Co. SCOTT State KS

Interval Tested 4509-4610 Zone Tested Pawnee-Myrick station Ft. Scott
 Anchor Length 101 Drill Pipe Run 4501 Mud Wt. 9.3
 Top Packer Depth 4504 Drill Collars Run Ø Vis 60
 Bottom Packer Depth 4509 Wt. Pipe Run Ø WL 10.3
 Total Depth 4610 Chlorides 8500 ppm System LCM 1

Blow Description IF: Built to 1/2" Blow
IS: No Return Blow
FF: Built to 3" Blow
FS: No Return Blow

Rec	Feet of	%gas	%oil	%water	%mud
<u>15</u>	<u>MUD (thick mud)</u>			<u>100</u>	
Rec	Feet of	%gas	%oil	%water	%mud
Rec	Feet of	%gas	%oil	%water	%mud
Rec	Feet of	%gas	%oil	%water	%mud
Rec	Feet of	%gas	%oil	%water	%mud

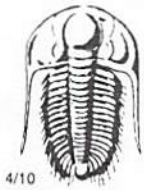
Rec Total 15 BHT 122 Gravity — API RW — @ — °F Chlorides — ppm

(A) Initial Hydrostatic — Test 1250.00 T-On Location 16:30
 (B) First Initial Flow — Jars 250.00 T-Started 18:10
 (C) First Final Flow — Safety Joint 75.00 T-Open 20:35
 (D) Initial Shut-In — Circ Sub NL T-Pulled 00:20
 (E) Second Initial Flow — Hourly Standby — T-Out 02:38
 (F) Second Final Flow — Mileage 40 RT 62.00 Comments —
 (G) Final Shut-In — Sampler —
 (H) Final Hydrostatic — Straddle — Ruined Shale Packer —
 Shale Packer — Ruined Packer —
 Extra Packer — Extra Copies —
 Extra Recorder —

Initial Open 30
 Initial Shut-In 45
 Final Flow 60
 Final Shut-In 90
 Sub Total 0
 Total 1637
 MP/DST Disc't —

Sub Total \$1637.00/-
 Approved By Brad Rive Our Representative Mike Roberts

TriLOBITE Testing Inc. shall not be liable for damaged of any kind of the property or personnel of the one for whom a test is made, or for any loss suffered or sustained, directly or indirectly, through the use of its equipment, or its statements or opinion concerning the results of any test, tools lost or damaged in the hole shall be paid for at cost by the party for whom the test is made.



TRILOBITE TESTING INC.

1515 Commerce Parkway • Hays, Kansas 67601

Test Ticket

NO. 59173

Well Name & No. Janzen 3-7 Test No. 4 Date 10-20-14
 Company Landmark Resources Inc Elevation 3089 KB 3079 GL
 Address 1614 Voss Rd STE 600 Houston TX 77057
 Co. Rep / Geo. Brad Rine Rig Val #1
 Location: Sec. 7 Twp. 17S Rge. 33W Co. SCOTT State KS

Interval Tested 4614-4715 Zone Tested Johnson
 Anchor Length 101 Drill Pipe Run 4596 Mud Wt. 9.2
 Top Packer Depth 4610 Drill Collars Run 0 Vis 65
 Bottom Packer Depth 4614 Wt. Pipe Run 0 WL 10.8
 Total Depth 4715 Chlorides 9300 ppm System LCM 1

Blow Description IF: Built to 14 Blow
IS: NO Return Blow
FF: NO Blow
FS: NO Return Blow

Rec	Feet of	%gas	%oil	%water	%mud
<u>5</u>	<u>MUD</u>			<u>100</u>	
Rec	Feet of	%gas	%oil	%water	%mud
Rec	Feet of	%gas	%oil	%water	%mud
Rec	Feet of	%gas	%oil	%water	%mud
Rec	Feet of	%gas	%oil	%water	%mud

Rec Total 5 BHT 122 Gravity — API RW — @ — ° F Chlorides — ppm

(A) Initial Hydrostatic <u>2451</u>	<input checked="" type="checkbox"/> Test <u>1250.00</u>	T-On Location <u>18:45</u>
(B) First Initial Flow <u>58</u>	<input checked="" type="checkbox"/> Jars <u>250.00</u>	T-Started <u>19:42</u>
(C) First Final Flow <u>58</u>	<input checked="" type="checkbox"/> Safety Joint <u>75.00</u>	T-Open <u>22:02</u>
(D) Initial Shut-In <u>338</u>	<input checked="" type="checkbox"/> Circ Sub <u>100</u>	T-Pulled <u>00:32</u>
(E) Second Initial Flow <u>59</u>	<input type="checkbox"/> Hourly Standby	T-Out <u>02:47</u>
(F) Second Final Flow <u>72</u>	<input checked="" type="checkbox"/> Mileage <u>40 RT 62.0%</u>	Comments <u>Loaded -</u>
(G) Final Shut-In <u>183</u>	<input type="checkbox"/> Sampler <u>62</u>	<u>tools 08:30</u>
(H) Final Hydrostatic <u>2278</u>	<input type="checkbox"/> Straddle	<u>on 22nd</u>

Initial Open <u>30</u>	<input type="checkbox"/> Shale Packer	<input type="checkbox"/> Ruined Shale Packer
Initial Shut-In <u>45</u>	<input type="checkbox"/> Shale Packer	<input type="checkbox"/> Ruined Packer
Final Flow <u>30</u>	<input type="checkbox"/> Extra Packer	<input type="checkbox"/> Extra Copies
Final Shut-In <u>45</u>	<input type="checkbox"/> Extra Recorder	Sub Total <u>0</u>
	<input type="checkbox"/> Day Standby <u>1699</u>	Total <u>1699</u>
	<input type="checkbox"/> Accessibility	MP/DST Disc't
	Sub Total <u>\$1637.00</u>	

Approved By Brad Rine Our Representative Mike Pelt

Trilobite Testing Inc. shall not be liable for damaged of any kind of the property or personnel of the one for whom a test is made, or for any loss suffered or sustained, directly or indirectly, through the use of its equipment, or its statements or opinion concerning the results of any test, tools lost or damaged in the hole shall be paid for at cost by the party for whom the test is made.