



**TRILOBITE  
TESTING, INC**

# DRILL STEM TEST REPORT

Herman L. Loeb LLC  
 P.O.Box 838  
 Lawrenceville, IL 62439  
 ATTN: Jon Christensen

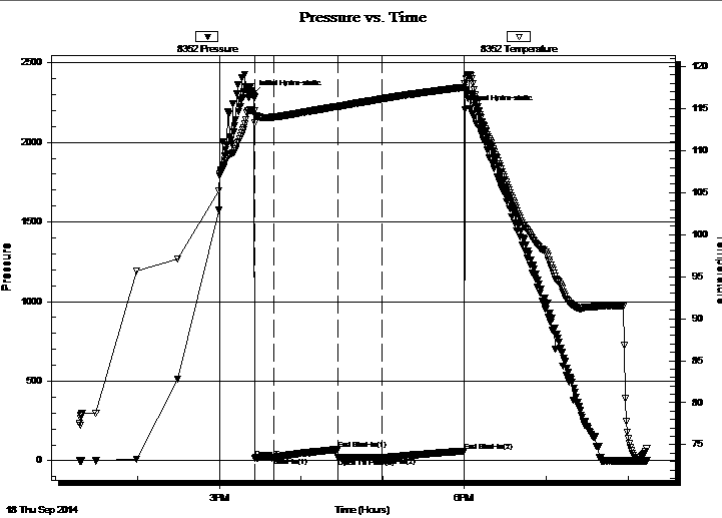
**15-28s-19w Kiowa Ks.**  
**Joy Station #1-15**  
 Job Ticket: 57853 **DST#: 2**  
 Test Start: 2014.09.18 @ 13:17:23

## GENERAL INFORMATION:

Formation: **Cherokee**  
 Deviated: No Whipstock: ft (KB)  
 Test Type: Conventional Bottom Hole (Reset)  
 Time Tool Opened: 15:26:08 Tester: Gary Pevoteaux  
 Time Test Ended: 20:14:08 Unit No: 56  
 Interval: **4840.00 ft (KB) To 4872.00 ft (KB) (TVD)** Reference Elevations: 2287.00 ft (KB)  
 Total Depth: 4872.00 ft (KB) (TVD) 2274.00 ft (CF)  
 Hole Diameter: 7.88 inches Hole Condition: Fair KB to GR/CF: 13.00 ft

**Serial #: 8352 Outside**  
 Press@RunDepth: 19.31 psig @ 4841.00 ft (KB) Capacity: 8000.00 psig  
 Start Date: 2014.09.18 End Date: 2014.09.18 Last Calib.: 2014.09.18  
 Start Time: 13:17:28 End Time: 20:14:07 Time On Btm: 2014.09.18 @ 15:24:38  
 Time Off Btm: 2014.09.18 @ 18:00:08

TEST COMMENT: IF:Weak blow . 1/2".  
 IS:No low .  
 FF:Weak blow . 3/4 - 1".  
 FS:No blow .



## PRESSURE SUMMARY

Time (Min.)	Pressure (psig)	Temp (deg F)	Annotation
0	2299.44	114.75	Initial Hydro-static
2	16.95	113.27	Open To Flow (1)
15	20.45	113.98	Shut-In(1)
63	70.88	115.26	End Shut-In(1)
63	17.91	115.22	Open To Flow (2)
95	19.31	116.15	Shut-In(2)
155	60.57	117.51	End Shut-In(2)
156	2206.22	117.93	Final Hydro-static

## Recovery

Length (ft)	Description	Volume (bbl)
10.00	Drig.mud	0.05
0.00	80 ft.of GIP	0.00

\* Recovery from multiple tests

## Gas Rates

Choke (inches)	Pressure (psig)	Gas Rate (Mcf/d)



**TRILOBITE  
TESTING, INC**

# DRILL STEM TEST REPORT

## FLUID SUMMARY

Herman L. Loeb LLC  
P.O.Box 838  
Lawrenceville, IL 62439  
ATTN: Jon Christensen

**15-28s-19w Kiowa Ks.**  
**Joy Station #1-15**  
Job Ticket: 57853      **DST#: 2**  
Test Start: 2014.09.18 @ 13:17:23

### Mud and Cushion Information

Mud Type: Gel Chem	Cushion Type:	Oil API:	deg API
Mud Weight: 9.00 lb/gal	Cushion Length: ft	Water Salinity:	4000 ppm
Viscosity: 75.00 sec/qt	Cushion Volume: bbl		
Water Loss: 8.79 in <sup>3</sup>	Gas Cushion Type:		
Resistivity: 0.00 ohm.m	Gas Cushion Pressure: psig		
Salinity: 4000.00 ppm			
Filter Cake: 0.20 inches			

### Recovery Information

Recovery Table

Length ft	Description	Volume bbl
10.00	Drig.mud	0.049
0.00	80 ft.of GIP	0.000

Total Length: 10.00 ft      Total Volume: 0.049 bbl  
 Num Fluid Samples: 0      Num Gas Bombs: 0      Serial #: none  
 Laboratory Name:      Laboratory Location:  
 Recovery Comments:

