



DRILL STEM TEST REPORT

Prepared For: **Downing-Nelson Oil Co. Inc**

P.O. Box 1019
Hays, KS 67601

ATTN: Ron Nelson

Albers BB Unit #1-11

11-17s-22w Ness,KS

Start Date: 2014.09.21 @ 17:53:00

End Date: 2014.09.22 @ 01:34:30

Job Ticket #: 58745 DST #: 1

Trilobite Testing, Inc
1515 Commerce Parkway Hays, KS 67601
ph: 785-625-4778 fax: 785-625-5620

Printed: 2014.09.24 @ 09:35:26



**TRILOBITE
TESTING, INC**

DRILL STEM TEST REPORT

Dow ning-Nelson Oil Co. Inc

11-17s-22w Ness,KS

P.O. Box 1019
Hays, KS 67601

Albers BB Unit #1-11

ATTN: Ron Nelson

Job Ticket: 58745

DST#: 1

Test Start: 2014.09.21 @ 17:53:00

GENERAL INFORMATION:

Formation: **Fort Scott**

Deviated: No Whipstock: ft (KB)

Time Tool Opened: 21:34:30

Time Test Ended: 01:34:30

Test Type: Conventional Bottom Hole (Initial)

Tester: Phillip Gage

Unit No: 70

Interval: 4246.00 ft (KB) To 4300.00 ft (KB) (TVD)

Reference Elevations: 2364.00 ft (KB)

Total Depth: 4300.00 ft (KB) (TVD)

2356.00 ft (CF)

Hole Diameter: 7.88 inches Hole Condition: Fair

KB to GR/CF: 8.00 ft

Serial #: 8700 Outside

Press@RunDepth: 45.75 psig @ 4247.00 ft (KB)

Capacity: 8000.00 psig

Start Date: 2014.09.21

End Date:

2014.09.22

Last Calib.:

2014.09.22

Start Time: 17:53:05

End Time:

01:34:29

Time On Btm:

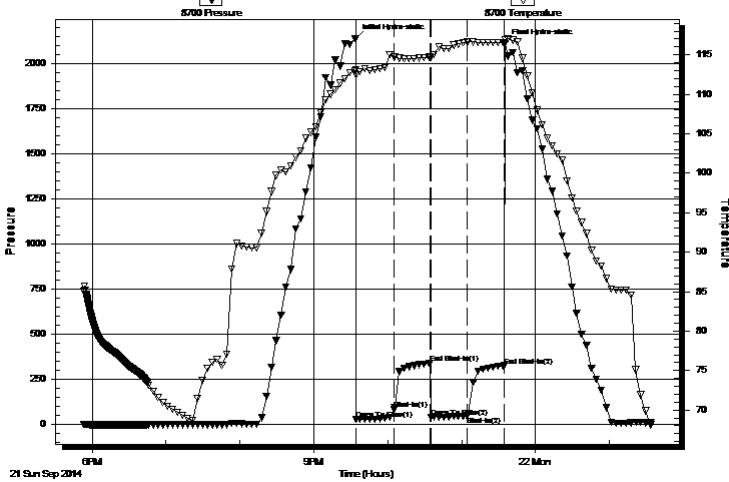
2014.09.21 @ 21:34:00

Time Off Btm:

2014.09.21 @ 23:35:30

TEST COMMENT: 30-IF-Built to 1 3/4"
30-ISI-No Return
30-FF-No Blow, Flushed Tool, Weak Surface Blow, Built to 1/4"
30-FSI-No Return

Pressure vs. Time



PRESSURE SUMMARY

Time (Min.)	Pressure (psig)	Temp (deg F)	Annotation
0	2142.03	113.11	Initial Hydro-static
1	28.77	112.52	Open To Flow (1)
31	81.55	114.78	Shut-In(1)
60	339.54	114.71	End Shut-In(1)
61	41.00	114.68	Open To Flow (2)
91	45.75	116.66	Shut-In(2)
121	325.70	116.56	End Shut-In(2)
122	2114.37	116.97	Final Hydro-static

Recovery

Length (ft)	Description	Volume (bbl)
63.00	M, w ith oil spots, 100% m	0.60

Gas Rates

	Choke (inches)	Pressure (psig)	Gas Rate (Mcf/d)



**TRILOBITE
TESTING, INC**

DRILL STEM TEST REPORT

TOOL DIAGRAM

Dow ning-Nelson Oil Co. Inc

11-17s-22w Ness,KS

P.O. Box 1019
Hays, KS 67601

Albers BB Unit #1-11

Job Ticket: 58745

DST#: 1

ATTN: Ron Nelson

Test Start: 2014.09.21 @ 17:53:00

Tool Information

Drill Pipe:	Length: 4214.00 ft	Diameter: 3.80 inches	Volume: 59.11 bbl	Tool Weight: 2000.00 lb
Heavy Wt. Pipe:	Length: 0.00 ft	Diameter: 2.75 inches	Volume: 0.00 bbl	Weight set on Packer: 25000.00 lb
Drill Collar:	Length: 31.00 ft	Diameter: 2.25 inches	Volume: 0.15 bbl	Weight to Pull Loose: 80000.00 lb
			<u>Total Volume: 59.26 bbl</u>	Tool Chased 0.00 ft
Drill Pipe Above KB:	20.00 ft			String Weight: Initial 60000.00 lb
Depth to Top Packer:	4246.00 ft			Final 60000.00 lb
Depth to Bottom Packer:	ft			
Interval between Packers:	54.00 ft			
Tool Length:	75.00 ft			
Number of Packers:	2	Diameter: 6.75 inches		

Tool Comments:

Tool Description

Tool Description	Length (ft)	Serial No.	Position	Depth (ft)	Accum. Lengths
Change Over Sub	1.00			4226.00	
Shut In Tool	5.00			4231.00	
Hydraulic tool	5.00			4236.00	
Packer	5.00			4241.00	21.00 Bottom Of Top Packer
Packer	5.00			4246.00	
Stubb	1.00			4247.00	
Recorder	0.00	8018	Inside	4247.00	
Recorder	0.00	8700	Outside	4247.00	
Perforations	17.00			4264.00	
Change Over Sub	1.00			4265.00	
Drill Pipe	31.00			4296.00	
Change Over Sub	1.00			4297.00	
Bullnose	3.00			4300.00	54.00 Bottom Packers & Anchor

Total Tool Length: 75.00



**TRILOBITE
TESTING, INC**

DRILL STEM TEST REPORT

FLUID SUMMARY

Downing-Nelson Oil Co. Inc

11-17s-22w Ness, KS

P.O. Box 1019
Hays, KS 67601

Albers BB Unit #1-11

Job Ticket: 58745

DST#: 1

ATTN: Ron Nelson

Test Start: 2014.09.21 @ 17:53:00

Mud and Cushion Information

Mud Type: Gel Chem

Cushion Type:

Oil API:

deg API

Mud Weight: 9.00 lb/gal

Cushion Length:

ft

Water Salinity:

ppm

Viscosity: 52.00 sec/qt

Cushion Volume:

bbbl

Water Loss: 8.78 in³

Gas Cushion Type:

Resistivity: ohm.m

Gas Cushion Pressure:

psig

Salinity: 4000.00 ppm

Filter Cake: 1.00 inches

Recovery Information

Recovery Table

Length ft	Description	Volume bbl
63.00	M, with oil spots, 100% m	0.601

Total Length: 63.00 ft Total Volume: 0.601 bbl

Num Fluid Samples: 0

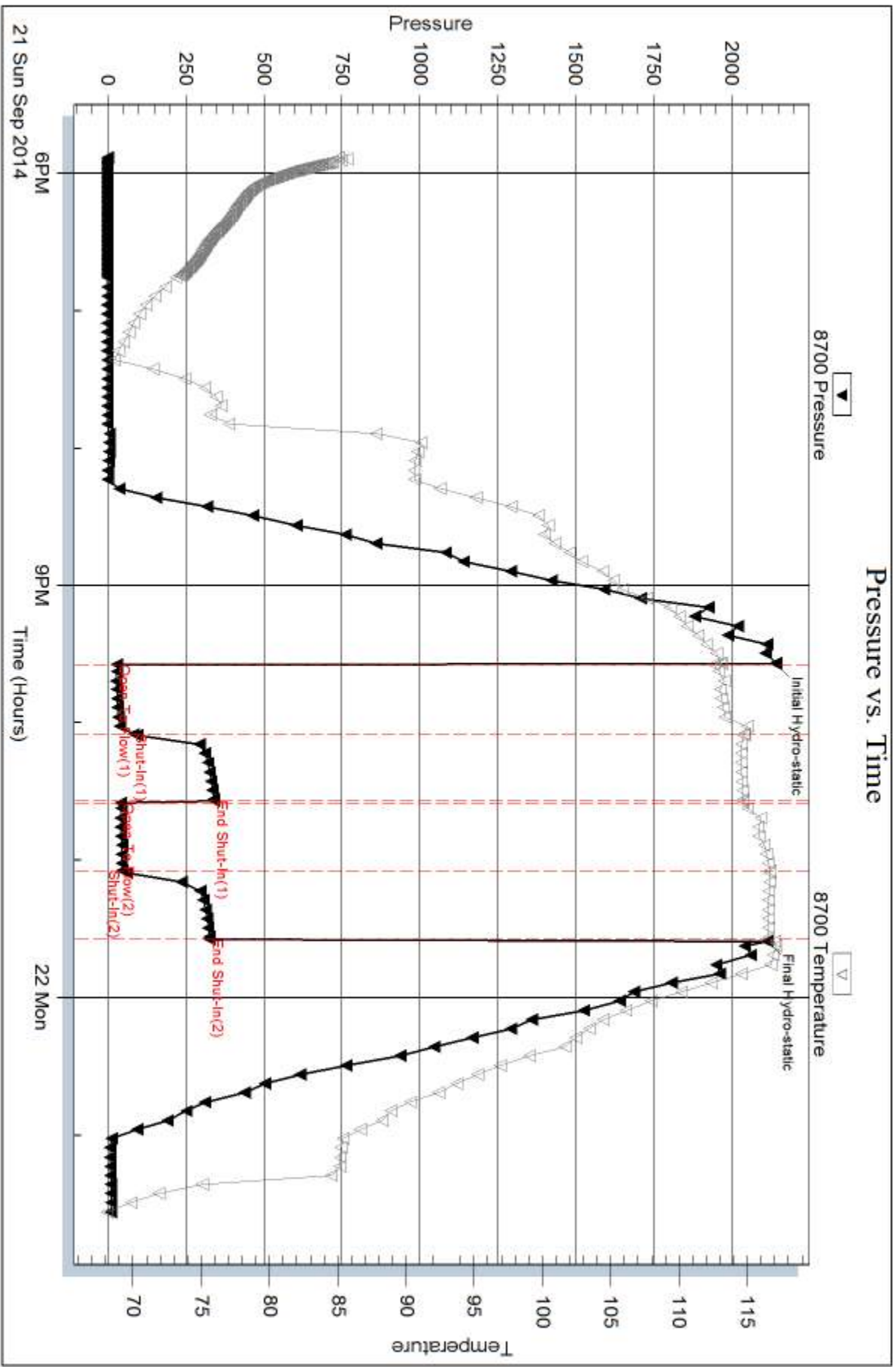
Num Gas Bombs: 0

Serial #:

Laboratory Name:

Laboratory Location:

Recovery Comments:



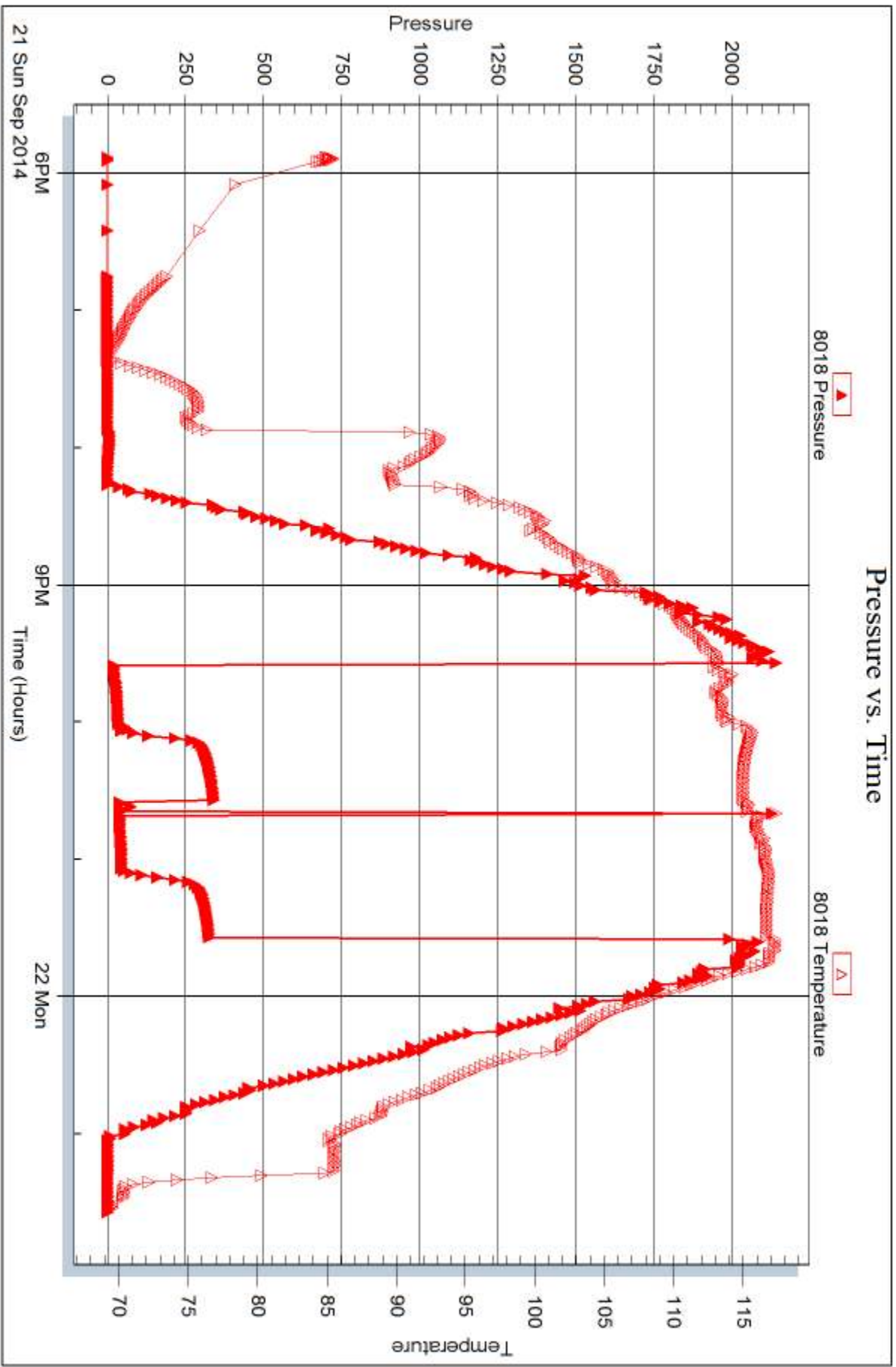
Serial #: 8018

Inside

Dow nrg-Nelson Oil Co. Inc

Abers BB Unit #1-11

DST Test Number: 1



Trilobite Testing, Inc

Ref. No: 58745

Printed: 2014.09.24 @ 09:35:27



DRILL STEM TEST REPORT

Prepared For: **Downing-Nelson Oil Co. Inc**

P.O. Box 1019
Hays, KS 67601

ATTN: Ron Nelson

Albers BB Unit #1-11

11-17s-22w Ness,KS

Start Date: 2014.09.22 @ 11:35:00

End Date: 2014.09.22 @ 19:53:30

Job Ticket #: 58746 DST #: 2

Trilobite Testing, Inc
1515 Commerce Parkway Hays, KS 67601
ph: 785-625-4778 fax: 785-625-5620

Printed: 2014.09.24 @ 09:35:06



**TRILOBITE
TESTING, INC**

DRILL STEM TEST REPORT

Dow ning-Nelson Oil Co. Inc

11-17s-22w Ness,KS

P.O. Box 1019
Hays, KS 67601

Albers BB Unit #1-11

ATTN: Ron Nelson

Job Ticket: 58746

DST#: 2

Test Start: 2014.09.22 @ 11:35:00

GENERAL INFORMATION:

Formation: **Miss**

Deviated: No Whipstock: ft (KB)

Time Tool Opened: 14:32:30

Time Test Ended: 19:53:30

Test Type: Conventional Bottom Hole (Reset)

Tester: Phillip Gage

Unit No: 70

Interval: 4285.00 ft (KB) To 4385.00 ft (KB) (TVD)

Reference Elevations: 2364.00 ft (KB)

Total Depth: 4385.00 ft (KB) (TVD)

2356.00 ft (CF)

Hole Diameter: 7.88 inches Hole Condition: Fair

KB to GR/CF: 8.00 ft

Serial #: 8700 Outside

Press@RunDepth: 111.25 psig @ 4286.00 ft (KB)

Capacity: 8000.00 psig

Start Date: 2014.09.22

End Date: 2014.09.22

Last Calib.: 2014.09.22

Start Time: 11:35:05

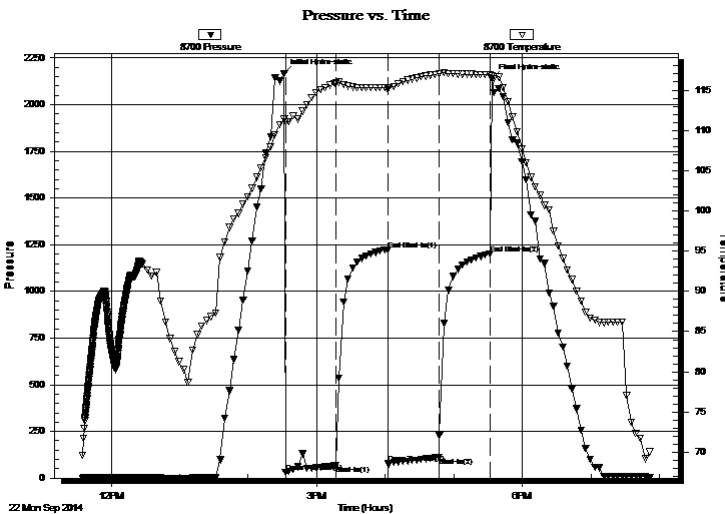
End Time: 19:53:29

Time On Btm: 2014.09.22 @ 14:31:30

Time Off Btm: 2014.09.22 @ 17:33:30

TEST COMMENT: 45-IF-Built to 9"
45-ISI-No Return
45-FF-Built to 6 1/2"
45-FSI-No Return

PRESSURE SUMMARY



Time (Min.)	Pressure (psig)	Temp (deg F)	Annotation
0	2168.33	111.39	Initial Hydro-static
1	32.03	111.06	Open To Flow (1)
46	69.11	115.88	Shut-In(1)
91	1222.53	115.33	End Shut-In(1)
91	77.54	115.08	Open To Flow (2)
136	111.25	117.02	Shut-In(2)
181	1201.68	116.88	End Shut-In(2)
182	2140.55	116.78	Final Hydro-static

Recovery

Length (ft)	Description	Volume (bbl)
126.00	V SOWCM, 1%o, 9%w, 90% m	1.49
63.00	V SOCM, 1%o, 99% m	0.88
15.00	O, 100%o	0.21

* Recovery from multiple tests

Gas Rates

Choke (inches)	Pressure (psig)	Gas Rate (Mcf/d)



**TRILOBITE
TESTING, INC**

DRILL STEM TEST REPORT

TOOL DIAGRAM

Dow ning-Nelson Oil Co. Inc

11-17s-22w Ness,KS

P.O. Box 1019
Hays, KS 67601

Albers BB Unit #1-11

Job Ticket: 58746

DST#: 2

ATTN: Ron Nelson

Test Start: 2014.09.22 @ 11:35:00

Tool Information

Drill Pipe:	Length: 4246.00 ft	Diameter: 3.80 inches	Volume: 59.56 bbl	Tool Weight: 2000.00 lb
Heavy Wt. Pipe:	Length: 0.00 ft	Diameter: 2.75 inches	Volume: 0.00 bbl	Weight set on Packer: 25000.00 lb
Drill Collar:	Length: 31.00 ft	Diameter: 2.25 inches	Volume: 0.15 bbl	Weight to Pull Loose: 64000.00 lb
			<u>Total Volume: 59.71 bbl</u>	Tool Chased 0.00 ft
Drill Pipe Above KB:	13.00 ft			String Weight: Initial 60000.00 lb
Depth to Top Packer:	4285.00 ft			Final 62000.00 lb
Depth to Bottom Packer:	ft			
Interval between Packers:	100.00 ft			
Tool Length:	121.00 ft			
Number of Packers:	2	Diameter: 6.75 inches		

Tool Comments:

Tool Description

Tool Description	Length (ft)	Serial No.	Position	Depth (ft)	Accum. Lengths
Change Over Sub	1.00			4265.00	
Shut In Tool	5.00			4270.00	
Hydraulic tool	5.00			4275.00	
Packer	5.00			4280.00	21.00 Bottom Of Top Packer
Packer	5.00			4285.00	
Stubb	1.00			4286.00	
Recorder	0.00	8018	Inside	4286.00	
Recorder	0.00	8700	Outside	4286.00	
Perforations	31.00			4317.00	
Change Over Sub	1.00			4318.00	
Drill Pipe	63.00			4381.00	
Change Over Sub	1.00			4382.00	
Bullnose	3.00			4385.00	100.00 Bottom Packers & Anchor

Total Tool Length: 121.00



**TRILOBITE
TESTING, INC**

DRILL STEM TEST REPORT

FLUID SUMMARY

Downing-Nelson Oil Co. Inc

11-17s-22w Ness,KS

P.O. Box 1019
Hays, KS 67601

Albers BB Unit #1-11

Job Ticket: 58746

DST#: 2

ATTN: Ron Nelson

Test Start: 2014.09.22 @ 11:35:00

Mud and Cushion Information

Mud Type: Gel Chem

Cushion Type:

Oil API:

40 deg API

Mud Weight: 9.00 lb/gal

Cushion Length:

ft

Water Salinity:

ppm

Viscosity: 52.00 sec/qt

Cushion Volume:

bbbl

Water Loss: 8.78 in³

Gas Cushion Type:

Resistivity: ohm.m

Gas Cushion Pressure:

psig

Salinity: 4000.00 ppm

Filter Cake: 1.00 inches

Recovery Information

Recovery Table

Length ft	Description	Volume bbbl
126.00	VSOWCM, 1%o, 9%w, 90%m	1.485
63.00	VSOCM, 1%o, 99%m	0.884
15.00	O, 100%o	0.210

Total Length: 204.00 ft Total Volume: 2.579 bbl

Num Fluid Samples: 0

Num Gas Bombs: 0

Serial #:

Laboratory Name:

Laboratory Location:

Recovery Comments:

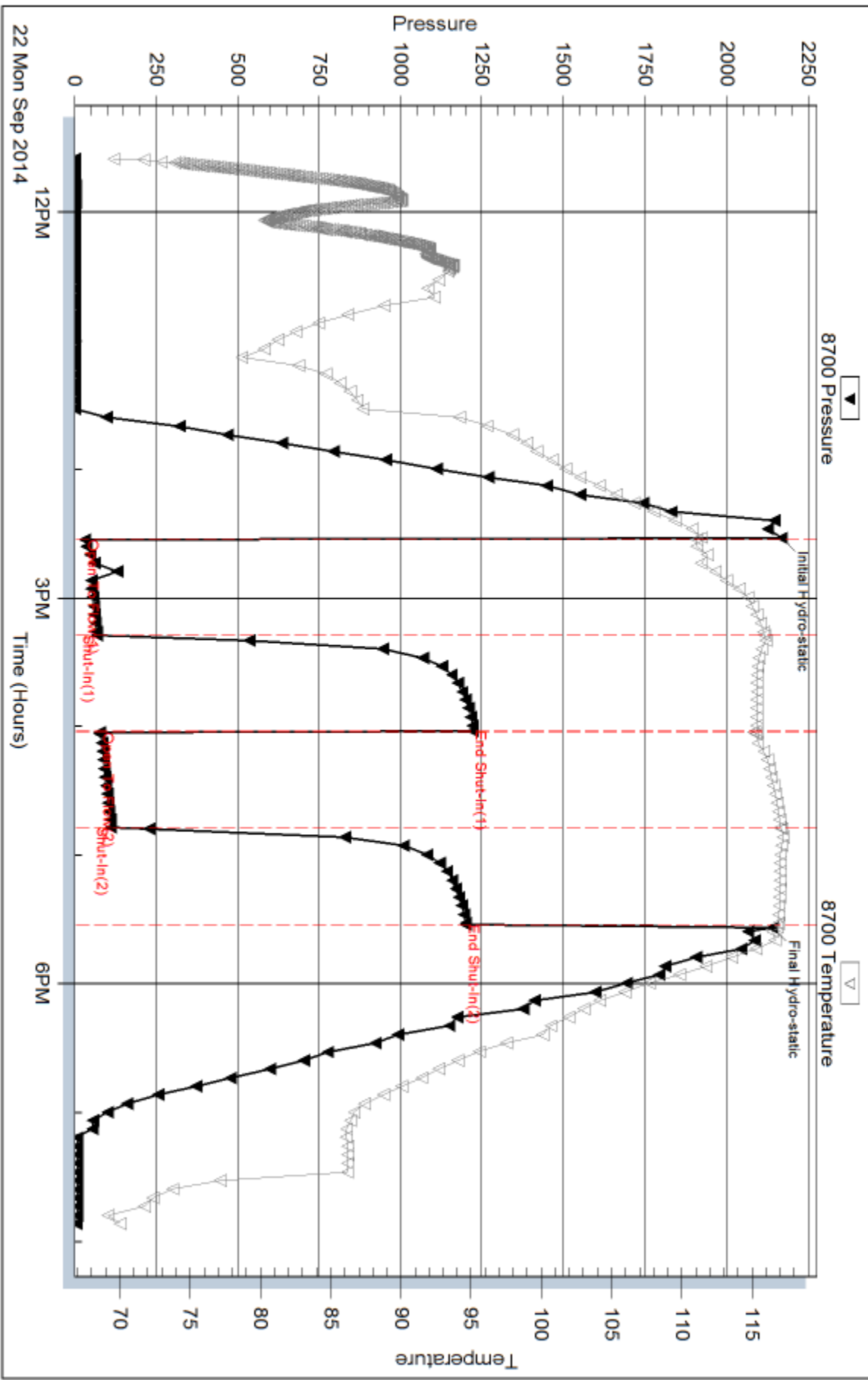
Serial #: 8700

Outside Dow nging-Nelson Oil Co. Inc

Albers BB Unit #1-11

DST Test Number: 2

Pressure vs. Time



Tribble Testing, Inc

Ref. No: 58746

Printed: 2014.09.24 @ 09:35:07

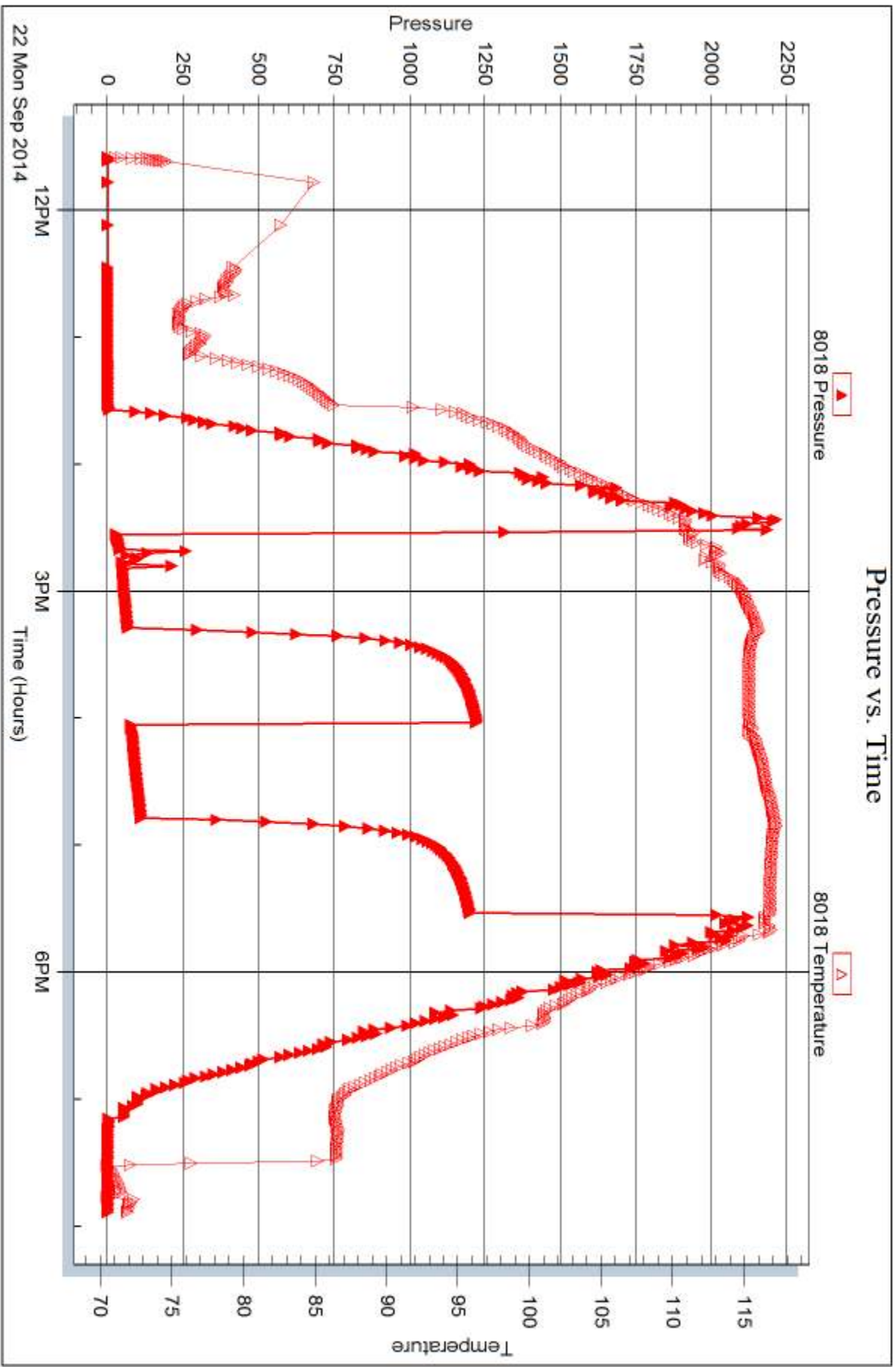
Serial #: 8018

Inside

Dow nrg-Nelson Oil Co. Inc

Abers BB Unit #1-11

DST Test Number: 2



Tribble Testing, Inc

Ref. No: 58746

Printed: 2014.09.24 @ 09:35:07



DRILL STEM TEST REPORT

Prepared For: **Downing-Nelson Oil Co. Inc**

P.O. Box 1019
Hays, KS 67601

ATTN: Ron Nelson

Albers BB Unit #1-11

11-17s-22w Ness,KS

Start Date: 2014.09.23 @ 00:12:00

End Date: 2014.09.23 @ 04:07:30

Job Ticket #: 58747 DST #: 3

Trilobite Testing, Inc
1515 Commerce Parkway Hays, KS 67601
ph: 785-625-4778 fax: 785-625-5620

Printed: 2014.09.24 @ 09:34:45



**TRILOBITE
TESTING, INC**

DRILL STEM TEST REPORT

TOOL DIAGRAM

Dow ning-Nelson Oil Co. Inc

11-17s-22w Ness,KS

P.O. Box 1019
Hays, KS 67601

Albers BB Unit #1-11

Job Ticket: 58747

DST#: 3

ATTN: Ron Nelson

Test Start: 2014.09.23 @ 00:12:00

Tool Information

Drill Pipe:	Length: 4341.00 ft	Diameter: 3.80 inches	Volume: 60.89 bbl	Tool Weight:	2000.00 lb
Heavy Wt. Pipe:	Length: 0.00 ft	Diameter: 2.75 inches	Volume: 0.00 bbl	Weight set on Packer:	25000.00 lb
Drill Collar:	Length: 31.00 ft	Diameter: 2.25 inches	Volume: 0.15 bbl	Weight to Pull Loose:	lb
			<u>Total Volume: 61.04 bbl</u>	Tool Chased	0.00 ft
Drill Pipe Above KB:	10.00 ft			String Weight: Initial	lb
Depth to Top Packer:	4383.00 ft			Final	lb
Depth to Bottom Packer:	ft				
Interval between Packers:	12.00 ft				
Tool Length:	33.00 ft				
Number of Packers:	2	Diameter: 6.75 inches			

Tool Comments:

Tool Description

Tool Description	Length (ft)	Serial No.	Position	Depth (ft)	Accum. Lengths
Change Over Sub	1.00			4363.00	
Shut In Tool	5.00			4368.00	
Hydraulic tool	5.00			4373.00	
Packer	5.00			4378.00	21.00 Bottom Of Top Packer
Packer	5.00			4383.00	
Stubb	1.00			4384.00	
Recorder	0.00	8018	Inside	4384.00	
Recorder	0.00	8700	Outside	4384.00	
Perforations	8.00			4392.00	
Bullnose	3.00			4395.00	12.00 Bottom Packers & Anchor
Total Tool Length:	33.00				



**TRILOBITE
TESTING, INC**

DRILL STEM TEST REPORT

FLUID SUMMARY

Downing-Nelson Oil Co. Inc

11-17s-22w Ness,KS

P.O. Box 1019
Hays, KS 67601

Albers BB Unit #1-11

Job Ticket: 58747

DST#: 3

ATTN: Ron Nelson

Test Start: 2014.09.23 @ 00:12:00

Mud and Cushion Information

Mud Type: Gel Chem

Cushion Type:

Oil API:

deg API

Mud Weight: 9.00 lb/gal

Cushion Length:

ft

Water Salinity:

ppm

Viscosity: 51.00 sec/qt

Cushion Volume:

bbbl

Water Loss: 8.78 in³

Gas Cushion Type:

Resistivity: ohm.m

Gas Cushion Pressure:

psig

Salinity: 4500.00 ppm

Filter Cake: 1.00 inches

Recovery Information

Recovery Table

Length ft	Description	Volume bbl

Total Length: ft

Total Volume: bbl

Num Fluid Samples: 0

Num Gas Bombs: 0

Serial #:

Laboratory Name:

Laboratory Location:

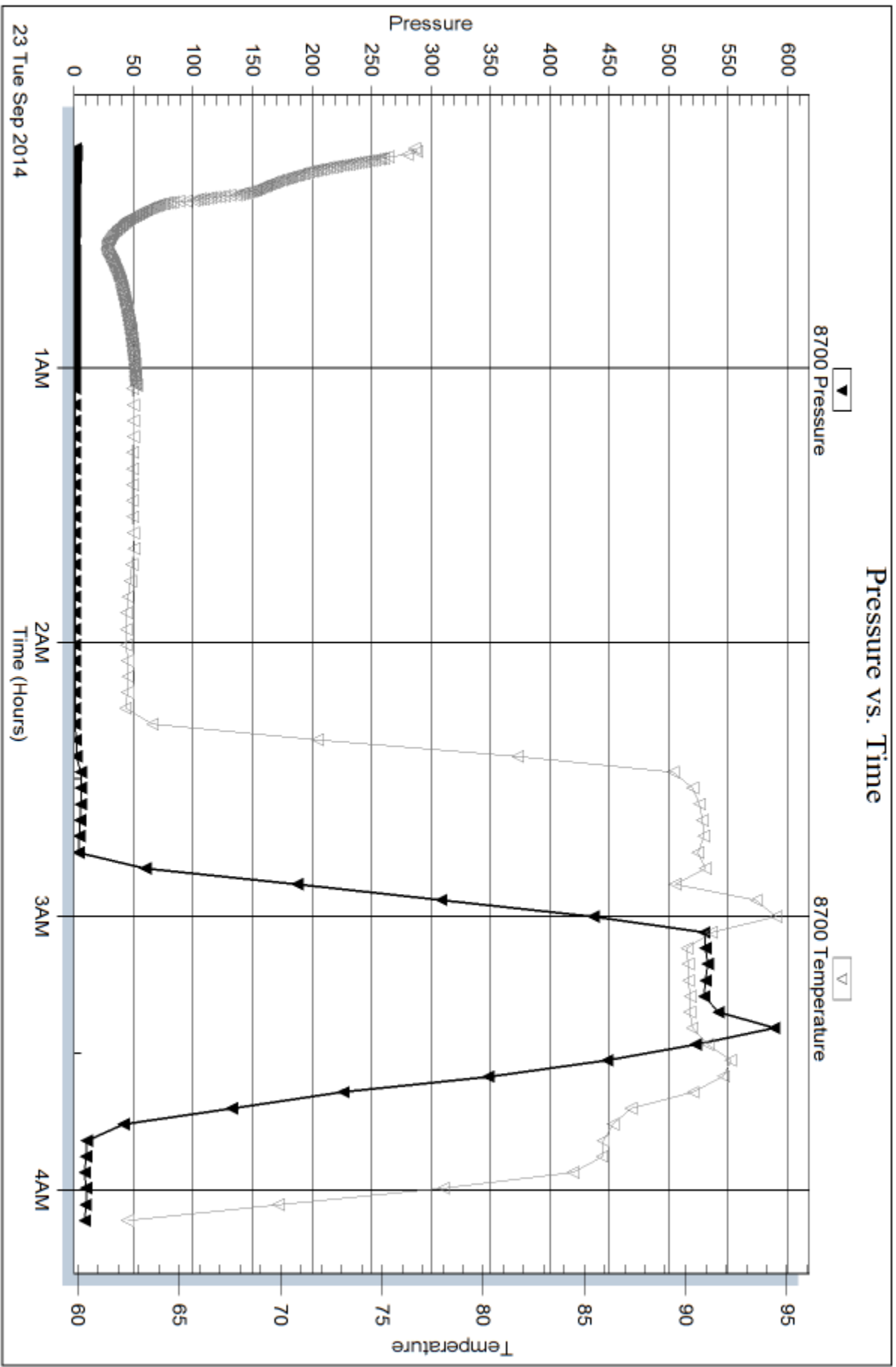
Recovery Comments:

Serial #: 8700

Outside Downing-Nelson Oil Co. Inc

Albers BB Unit #1-11

DST Test Number: 3

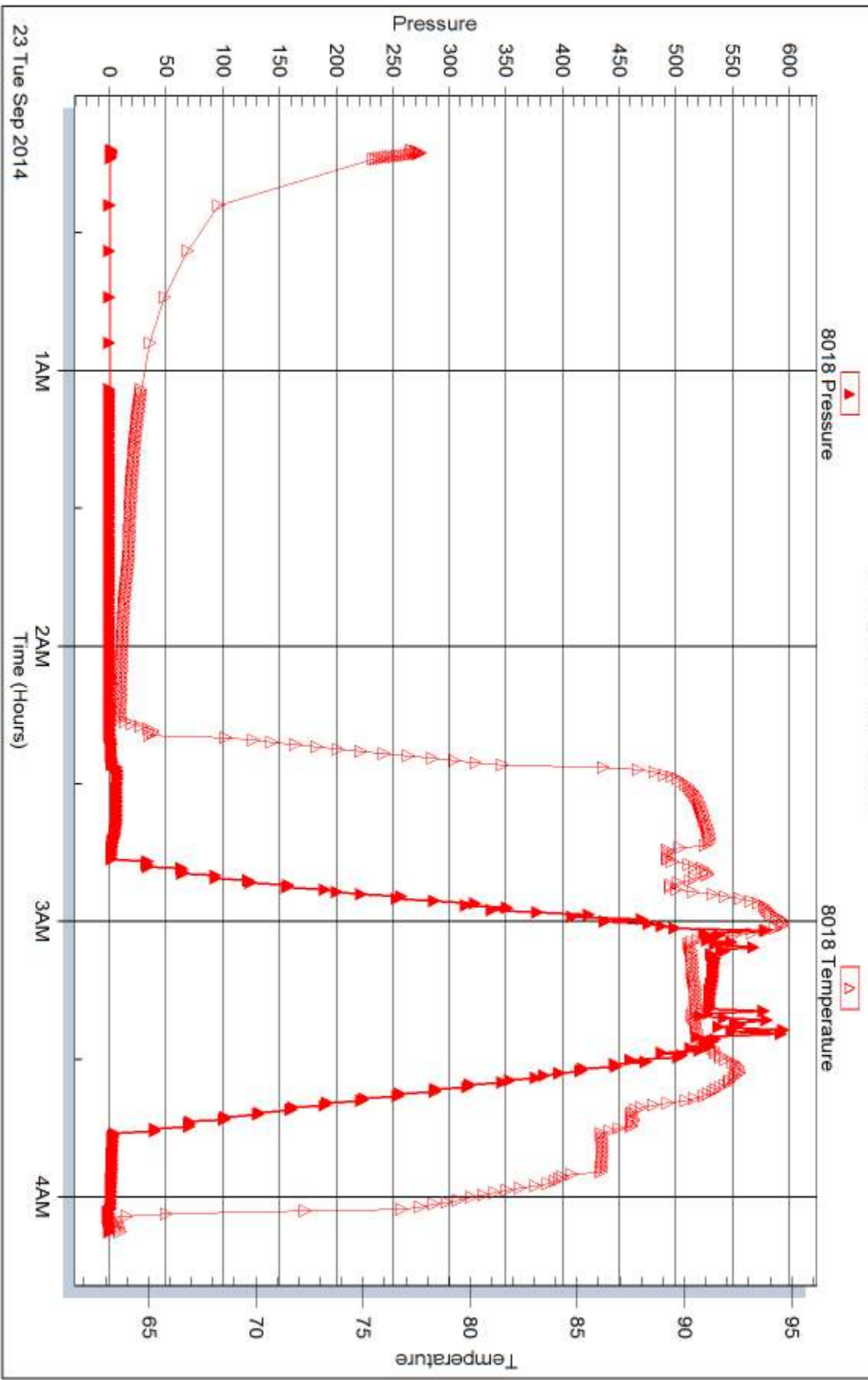


Triobite Testing, Inc

Ref. No: 58747

Printed: 2014.09.24 @ 09:34:46

Pressure vs. Time





DRILL STEM TEST REPORT

Prepared For: **Downing-Nelson Oil Co. Inc**

P.O. Box 1019
Hays, KS 67601

ATTN: Ron Nelson

Albers BB Unit #1-11

11-17s-22w Ness,KS

Start Date: 2014.09.23 @ 06:10:00

End Date: 2014.09.23 @ 14:00:30

Job Ticket #: 58749 DST #: 4

Trilobite Testing, Inc
1515 Commerce Parkway Hays, KS 67601
ph: 785-625-4778 fax: 785-625-5620

Printed: 2014.09.24 @ 09:34:06



TRILOBITE TESTING, INC

DRILL STEM TEST REPORT

Dow ning-Nelson Oil Co. Inc

11-17s-22w Ness,KS

P.O. Box 1019
Hays, KS 67601

Albers BB Unit #1-11

ATTN: Ron Nelson

Job Ticket: 58749

DST#: 4

Test Start: 2014.09.23 @ 06:10:00

GENERAL INFORMATION:

Formation: **Miss**

Deviated: No Whipstock: ft (KB)

Time Tool Opened: 08:34:00

Time Test Ended: 14:00:30

Test Type: Conventional Bottom Hole (Reset)

Tester: Phillip Gage

Unit No: 70

Interval: 4286.00 ft (KB) To 4395.00 ft (KB) (TVD)

Reference Elevations: 2364.00 ft (KB)

Total Depth: 4395.00 ft (KB) (TVD)

2356.00 ft (CF)

Hole Diameter: 7.88 inches Hole Condition: Fair

KB to GR/CF: 8.00 ft

Serial #: 8700 Outside

Press@RunDepth: 195.22 psig @ 4287.00 ft (KB)

Capacity: 8000.00 psig

Start Date: 2014.09.23

End Date:

2014.09.23

Last Calib.:

2014.09.23

Start Time: 06:10:05

End Time:

14:00:29

Time On Btm:

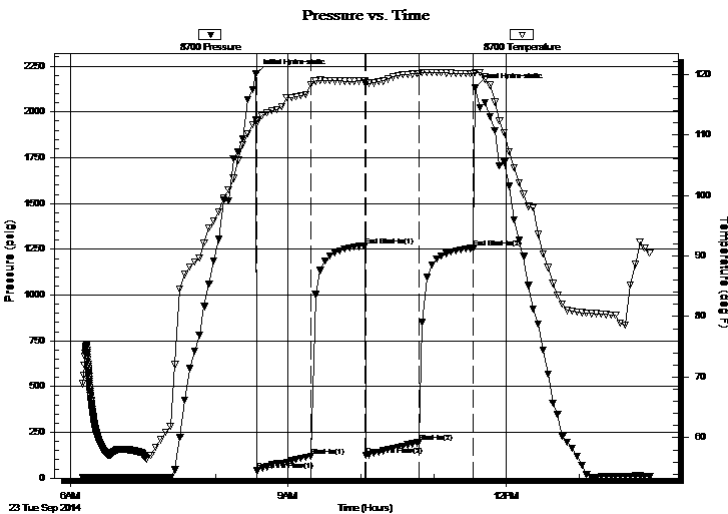
2014.09.23 @ 08:33:30

Time Off Btm:

2014.09.23 @ 11:34:30

TEST COMMENT: 45-IF-BOB in 27 mins.
45-ISI-No Return
45-FF-BOB in 34 mins.
45-FSI-No Return

PRESSURE SUMMARY



Time (Min.)	Pressure (psig)	Temp (deg F)	Annotation
0	2210.89	112.52	Initial Hydro-static
1	43.08	111.84	Open To Flow (1)
45	119.18	118.30	Shut-In(1)
90	1269.59	118.87	End Shut-In(1)
91	124.58	118.54	Open To Flow (2)
135	195.22	120.05	Shut-In(2)
180	1257.84	120.09	End Shut-In(2)
181	2130.23	120.29	Final Hydro-static

Recovery

Length (ft)	Description	Volume (bbl)
63.00	MW, 50%w, 50%w	0.60
126.00	WM, 30%w, 70%w	1.77
126.00	VSWCM, w ith oil spots, 5%w, 95%w	1.77
63.00	VSOCM, 1%o, 99%w	0.88
5.00	VSOCM, 5%o, 95%w	0.07

Gas Rates

Choke (inches)	Pressure (psig)	Gas Rate (Mcf/d)

* Recovery from multiple tests



**TRILOBITE
TESTING, INC**

DRILL STEM TEST REPORT

TOOL DIAGRAM

Dow ning-Nelson Oil Co. Inc

11-17s-22w Ness,KS

P.O. Box 1019
Hays, KS 67601

Albers BB Unit #1-11

Job Ticket: 58749

DST#: 4

ATTN: Ron Nelson

Test Start: 2014.09.23 @ 06:10:00

Tool Information

Drill Pipe:	Length: 4246.00 ft	Diameter: 3.80 inches	Volume: 59.56 bbl	Tool Weight:	2000.00 lb
Heavy Wt. Pipe:	Length: 0.00 ft	Diameter: 2.75 inches	Volume: 0.00 bbl	Weight set on Packer:	25000.00 lb
Drill Collar:	Length: 31.00 ft	Diameter: 2.25 inches	Volume: 0.15 bbl	Weight to Pull Loose:	66000.00 lb
			<u>Total Volume: 59.71 bbl</u>	Tool Chased	0.00 ft
Drill Pipe Above KB:	12.00 ft			String Weight: Initial	60000.00 lb
Depth to Top Packer:	4286.00 ft			Final	62000.00 lb
Depth to Bottom Packer:	ft				
Interval between Packers:	109.00 ft				
Tool Length:	130.00 ft				
Number of Packers:	2	Diameter: 6.75 inches			

Tool Comments:

Tool Description

Tool Description	Length (ft)	Serial No.	Position	Depth (ft)	Accum. Lengths
Change Over Sub	1.00			4266.00	
Shut In Tool	5.00			4271.00	
Hydraulic tool	5.00			4276.00	
Packer	5.00			4281.00	21.00 Bottom Of Top Packer
Packer	5.00			4286.00	
Stubb	1.00			4287.00	
Recorder	0.00	8018	Inside	4287.00	
Recorder	0.00	8700	Outside	4287.00	
Perforations	5.00			4292.00	
Change Over Sub	1.00			4293.00	
Drill Pipe	63.00			4356.00	
Change Over Sub	1.00			4357.00	
Perforations	35.00			4392.00	
Bullnose	3.00			4395.00	109.00 Bottom Packers & Anchor

Total Tool Length: 130.00



**TRILOBITE
TESTING, INC**

DRILL STEM TEST REPORT

FLUID SUMMARY

Downing-Nelson Oil Co. Inc

11-17s-22w Ness,KS

P.O. Box 1019
Hays, KS 67601

Albers BB Unit #1-11

Job Ticket: 58749

DST#: 4

ATTN: Ron Nelson

Test Start: 2014.09.23 @ 06:10:00

Mud and Cushion Information

Mud Type: Gel Chem

Cushion Type:

Oil API:

deg API

Mud Weight: 9.00 lb/gal

Cushion Length:

ft

Water Salinity:

30000 ppm

Viscosity: 51.00 sec/qt

Cushion Volume:

bbf

Water Loss: 8.78 in³

Gas Cushion Type:

Resistivity: ohm.m

Gas Cushion Pressure:

psig

Salinity: 4500.00 ppm

Filter Cake: 1.00 inches

Recovery Information

Recovery Table

Length ft	Description	Volume bbf
63.00	MW, 50% <i>m</i> , 50% <i>w</i>	0.601
126.00	WM, 30% <i>w</i> , 70% <i>m</i>	1.767
126.00	VSWCM, with oil spots, 5% <i>w</i> , 95% <i>m</i>	1.767
63.00	VSOCM, 1% <i>o</i> , 99% <i>m</i>	0.884
5.00	VSOCM, 5% <i>o</i> , 95% <i>m</i>	0.070

Total Length: 383.00 ft Total Volume: 5.089 bbf

Num Fluid Samples: 0

Num Gas Bombs: 0

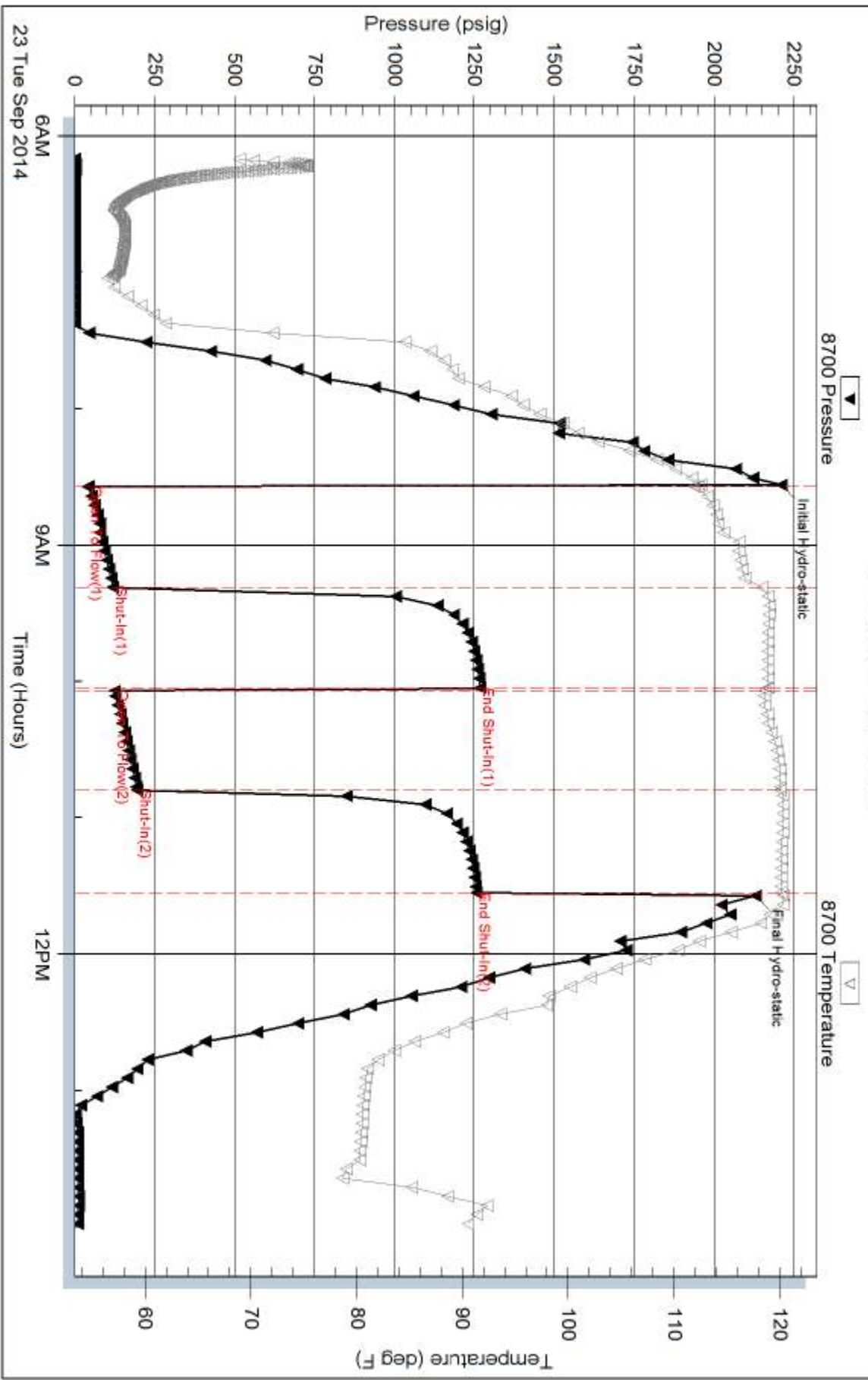
Serial #:

Laboratory Name:

Laboratory Location:

Recovery Comments: .22 @ 80 degrees = 30,000 Salinity

Pressure vs. Time



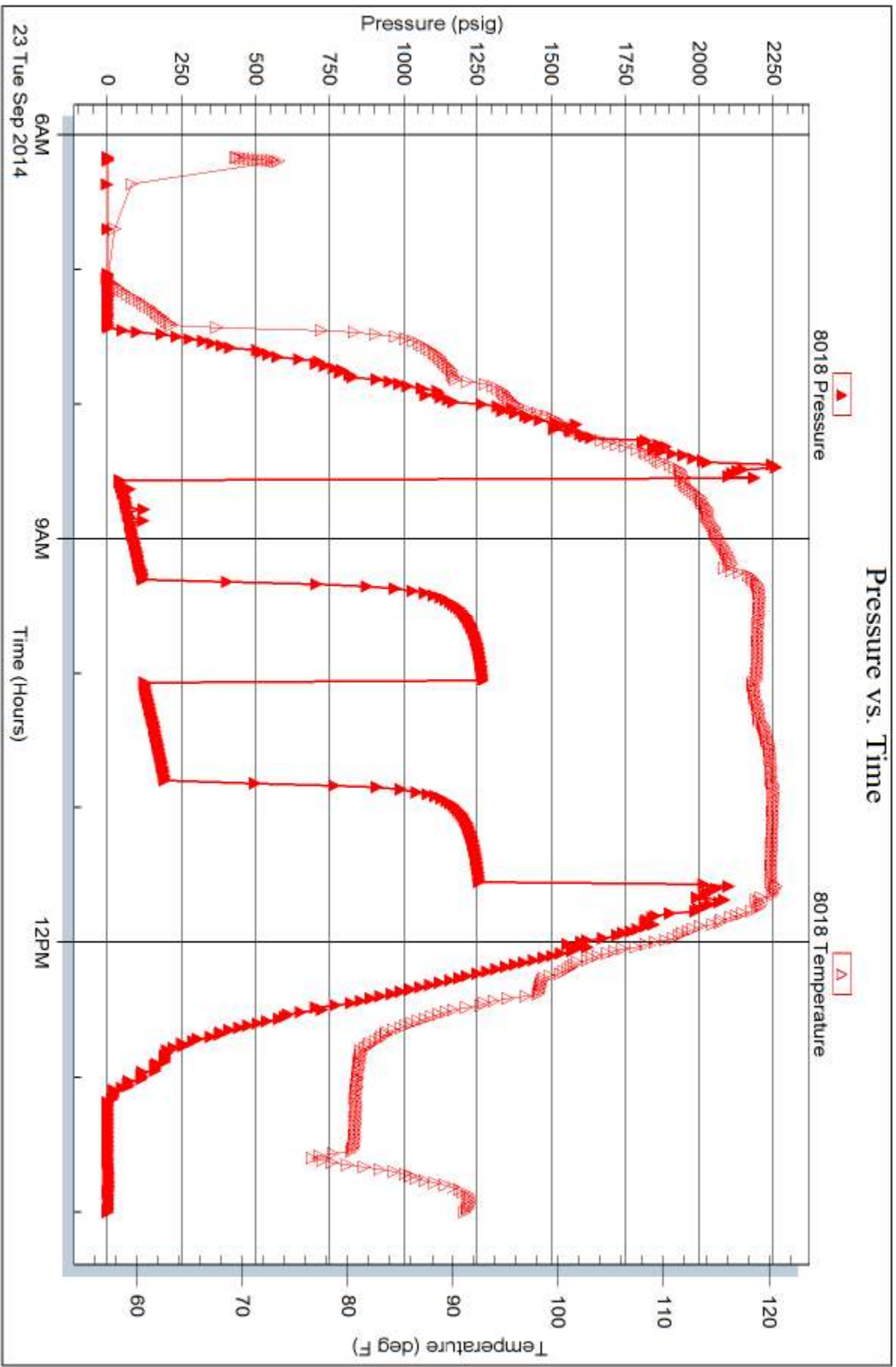
Serial #: 8018

Inside

Dow n/g-Nelson Oil Co. Inc

Abers BB Unit #1-11

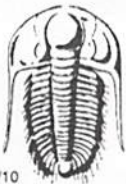
DST Test Number: 4



Trilobite Testing, Inc

Ref. No: 58749

Printed: 2014.09.24 @ 09:34:07



TRILOBITE TESTING INC.

1515 Commerce Parkway • Hays, Kansas 67601

Test Ticket

NO. 58745

4/10

Well Name & No. Albers BB Unit #1-11 Test No. 1 Date 9-21-14
 Company Downing-Nelson Oil Co. Inc. Elevation 2364 KB 2356 GL
 Address P.O. Box 1019 Hays, KS 67601
 Co. Rep / Geo. Ron Nelson Rig Discovery Rig 3
 Location: Sec. 11 Twp. 17s Rge. 22w Co. Ness State KS

Interval Tested 4246-4300 Zone Tested Fort Scott
 Anchor Length 54' Drill Pipe Run 4214 Mud Wt. 9.2
 Top Packer Depth 4241 Drill Collars Run 31 Vis 52
 Bottom Packer Depth 4246 Wt. Pipe Run 0 WL 8.8
 Total Depth 4300 Chlorides 4,000 ppm System LCM 1#

Blow Description IF Bunt to 13/4"
ISE No Return
FF No Blow, Flushed Tool, Weak Surface Blow, Bunt to 1/4"
ISE No Return

Rec	Feet of	%gas	%oil	%water	%mud
<u>63'</u>	<u>M₂ with oil spots</u>				<u>100</u>
Rec	Feet of	%gas	%oil	%water	%mud
Rec	Feet of	%gas	%oil	%water	%mud
Rec	Feet of	%gas	%oil	%water	%mud
Rec	Feet of	%gas	%oil	%water	%mud

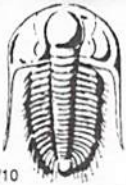
Rec Total 63' BHT 116 Gravity _____ API RW _____ @ _____ °F Chlorides _____ ppm

(A) Initial Hydrostatic 2,142 Test 1250 T-On Location 16:10
 (B) First Initial Flow 28 Jars _____ T-Started 17:53
 (C) First Final Flow 81 Safety Joint _____ T-Open 21:35
 (D) Initial Shut-In 339 Circ Sub _____ T-Pulled 23:35
 (E) Second Initial Flow 41 Hourly Standby _____ T-Out 01:35
 (F) Second Final Flow 45 Mileage 94 RT 145.70 Comments _____
 (G) Final Shut-In 325 Sampler _____
 (H) Final Hydrostatic 2,114 Straddle _____ Ruined Shale Packer _____

Initial Open 30 Extra Packer _____ Extra Copies _____
 Initial Shut-In 30 Extra Recorder _____ Sub Total 0
 Final Flow 30 Day Standby _____ Total 1395.70
 Final Shut-In 30 Accessibility _____ MP/DST Disc't _____
 Sub Total 1395.70

Approved By _____ Our Representative Mike George Thank You!

Trilobite Testing Inc. shall not be liable for damaged of any kind of the property or personnel of the one for whom a test is made, or for any loss suffered or sustained, directly or indirectly, through the use of its equipment, or its statements or opinion concerning the results of any test, tools lost or damaged in the hole shall be paid for at cost by the party for whom the test is made.



TRILOBITE TESTING INC.

1515 Commerce Parkway • Hays, Kansas 67601

Test Ticket

NO. 58746

4/10

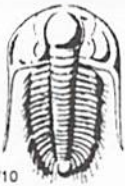
Well Name & No. Albers BB Unit #1-11 Test No. 2 Date 9-22-14
 Company Downing Nelson Oil Co. Inc. Elevation 2364 KB 2356 GL
 Address P.O. BOX 1014 Hays, KS 67601
 Co. Rep / Geo. Ron Nelson Rig Discovery Rig 3
 Location: Sec. 11 Twp. 17s Rge. 22w Co. Ness State KS

Interval Tested 4285-4385 Zone Tested Miss.
 Anchor Length 100' Drill Pipe Run 4246 Mud Wt. 9.2
 Top Packer Depth 4280 Drill Collars Run 31 Vis 52
 Bottom Packer Depth 4285 Wt. Pipe Run 0 WL 8.8
 Total Depth 4385 Chlorides 4,000 ppm System LCM 1#
 Blow Description IF- Buds to 9"
ISI- No Return,
FF- Buds to 6 1/2"
FSI- No Return.

Rec	Feet of	%gas	%oil	%water	%mud
<u>126'</u>	<u>VSOWCM</u>		<u>1</u>	<u>9</u>	<u>90</u>
<u>63'</u>	<u>VSOCM</u>		<u>1</u>		<u>99</u>
<u>15'</u>	<u>0</u>		<u>100</u>		

Rec Total 204 BHT 116 Gravity 40 API RW @ °F Chlorides _____ ppm
 (A) Initial Hydrostatic 2168 Test 1250 T-On Location 11:33
 (B) First Initial Flow 32 Jars _____ T-Started 11:35
 (C) First Final Flow 64 Safety Joint _____ T-Open 14:32
 (D) Initial Shut-In 1,222 Circ Sub _____ T-Pulled 17:32
 (E) Second Initial Flow 77 Hourly Standby _____ T-Out 19:54
 (F) Second Final Flow 111 Mileage 94 RT 145.70 Comments _____
 (G) Final Shut-In 1,201 Sampler _____
 (H) Final Hydrostatic 2,140 Straddle _____ Ruined Shale Packer _____
 Shale Packer _____ Ruined Packer _____
 Initial Open 45 Extra Packer _____ Extra Copies _____
 Initial Shut-In 45 Extra Recorder _____ Sub Total 0
 Final Flow 45 Day Standby _____ Total 1395.70
 Final Shut-In 45 Accessibility _____ MP/DST Disc't _____
 Sub Total 1395.70

Approved By _____ Our Representative Philp Hoge Thank You!
 Trilobite Testing Inc. shall not be liable for damaged of any kind of the property or personnel of the one for whom a test is made, or for any loss suffered or sustained, directly or indirectly, through the use of its equipment, or its statements or opinion concerning the results of any test, tools lost or damaged in the hole shall be paid for at cost by the party for whom the test is made.



TRILOBITE TESTING INC.

1515 Commerce Parkway • Hays, Kansas 67601

Test Ticket

NO. 58747

4/10

Well Name & No. Albers BB Unit #1-11 Test No. 3 Date 9-23-14
 Company Downing Nelson Oil Co. Inc Elevation 2364 KB 2356 GL
 Address P.O. Box 1019 Hays, KS 67601
 Co. Rep / Geo. Ron Nelson Rig Discovery Rig 3
 Location: Sec. 11 Twp. 17s Rge. 22w Co. Ness State KS

Interval Tested 4383-4395 Zone Tested Miss
 Anchor Length 12' Drill Pipe Run 4341 Mud Wt. 9.4
 Top Packer Depth 4378 Drill Collars Run 31 Vis 51
 Bottom Packer Depth 4383 Wt. Pipe Run 0 WL 8.8
 Total Depth 4395 Chlorides 4500 ppm System LCM 2#

Blow Description IF-
ISI MIS RUN
FF-
FSI

Rec	Feet of	%gas	%oil	%water	%mud

Rec Total _____ BHT _____ Gravity _____ API RW _____ @ _____ °F Chlorides _____ ppm

(A) Initial Hydrostatic _____ Test 1050 T-On Location 00:08
 (B) First Initial Flow _____ Jars _____ T-Started 00:12
 (C) First Final Flow _____ Safety Joint _____ T-Open N/A
 (D) Initial Shut-In _____ Circ Sub _____ T-Pulled 03:27
 (E) Second Initial Flow _____ Hourly Standby _____ T-Out 04:08
 (F) Second Final Flow _____ Mileage 94 RT 145.70 Comments Mis Run, Hit
 (G) Final Shut-In _____ Sampler _____ Bridge at 1150'
 (H) Final Hydrostatic _____ Straddle _____ Ruined Shale Packer _____
 Shale Packer _____ Ruined Packer _____
 Extra Packer _____ Extra Copies _____
 Initial Open _____ Extra Recorder _____ Sub Total 0
 Initial Shut-In _____ Day Standby _____ Total 1195.70
 Final Flow _____ Accessibility _____ MP/DST Disc't _____
 Final Shut-In _____ Sub Total 1195.70

Approved By _____ Our Representative Phil Leg Thank You
 Trilobite Testing Inc. shall not be liable for damaged of any kind of the property or personnel of the one for whom a test is made, or for any loss suffered or sustained, directly or indirectly, through the use of its equipment, or its statements or opinion concerning the results of any test, tools lost or damaged in the hole shall be paid for at cost by the party for whom the test is made.



TRILOBITE TESTING INC.

1515 Commerce Parkway • Hays, Kansas 67601

Test Ticket

NO. 58749

4/10

Well Name & No. Albers BB Unit #1-11 Test No. 4 Date 9-23-14
 Company Downing-Nelson Oil Co. Inc. Elevation 2364 KB 2356 GL
 Address P.O. Box 1019 Hays, KS 67601
 Co. Rep / Geo. Ron Nelson Rig Discovery Rig 3
 Location: Sec. 11 Twp. 17s Rge. 22w Co. Ness State KS

Interval Tested 4286-4395 Zone Tested Miss
 Anchor Length 109' Drill Pipe Run 4246 Mud Wt. 9.4
 Top Packer Depth 4281 Drill Collars Run 31 Vis 51
 Bottom Packer Depth 4286 Wt. Pipe Run 0 WL 8.8
 Total Depth 4395 Chlorides 4,500 ppm System LCM 1#
 Blow Description IF- BOB in 27 mins
ISI- No Return
FF- BOB in 34 mins
FSI- No Return

Rec	Feet of	%gas	%oil	%water	%mud
63'	MW			50%	50%
126'	WM			30%	70%
126'	VSW com, oil spots			5%	95%
63'	V50 com		1%		99%
51'	V50 com		5%		95%

Rec Total 383 BHT 120 Gravity ~ API RW 22 @ 80° F Chlorides 30,000 ppm
 (A) Initial Hydrostatic 2,210 Test 1250 T-On Location 00:08
 (B) First Initial Flow 43 Jars _____ T-Started 06:10
 (C) First Final Flow 119 Safety Joint _____ T-Open 08:34
 (D) Initial Shut-In 1269 Circ Sub _____ T-Pulled 11:34
 (E) Second Initial Flow 124 Hourly Standby _____ T-Out 14:01
 (F) Second Final Flow 195 Mileage 947.2 145.70 Comments _____
 (G) Final Shut-In 1,257 Sampler _____
 (H) Final Hydrostatic 2,130 Straddle _____ Ruined Shale Packer _____
 Shale Packer _____ Ruined Packer _____
 Extra Packer _____ Extra Copies _____
 Initial Open 45 Extra Recorder _____ Sub Total 0
 Initial Shut-In 45 Day Standby _____ Total 1395.70
 Final Flow 45 Accessibility _____ MP/DST Disc't _____
 Final Shut-In 45 Sub Total 1395.70

Approved By _____ Our Representative Phil Ly Thank You!
 Trilobite Testing Inc. shall not be liable for damaged of any kind of the property or personnel of the one for whom a test is made, or for any loss suffered or sustained, directly or indirectly, through the use of its equipment, or its statements or opinion concerning the results of any test, tools lost or damaged in the hole shall be paid for at cost by the party for whom the test is made.