



**TRILOBITE
TESTING, INC.**

DRILL STEM TEST REPORT

Cholla Production, LLC

Sec. 12-11s-23w Trego, KS

10390 Bradford Rd
Suite 201
Littleton, CO 80127
ATTN: Justin Carter/Emily

Patterson #2-12

Job Ticket: 58750

DST#: 1

Test Start: 2014.09.27 @ 22:10:00

GENERAL INFORMATION:

Formation: **LKC "A-B"**

Deviated: No Whipstock: ft (KB)

Time Tool Opened: 01:26:00

Time Test Ended: 07:24:00

Test Type: Conventional Bottom Hole (Initial)

Tester: Phillip Gage

Unit No: 62

Interval: 3508.00 ft (KB) To 3562.00 ft (KB) (TVD)

Reference Elevations: 2244.00 ft (KB)

Total Depth: 3562.00 ft (KB) (TVD)

2239.00 ft (CF)

Hole Diameter: 7.88 inches Hole Condition: Fair

KB to GR/CF: 5.00 ft

Serial #: 8655 Outside

Press @ Run Depth: 265.54 psig @ 3509.00 ft (KB)

Capacity: 8000.00 psig

Start Date: 2014.09.27

End Date:

2014.09.28

Last Calib.:

2014.09.28

Start Time: 22:10:01

End Time:

07:24:00

Time On Btm:

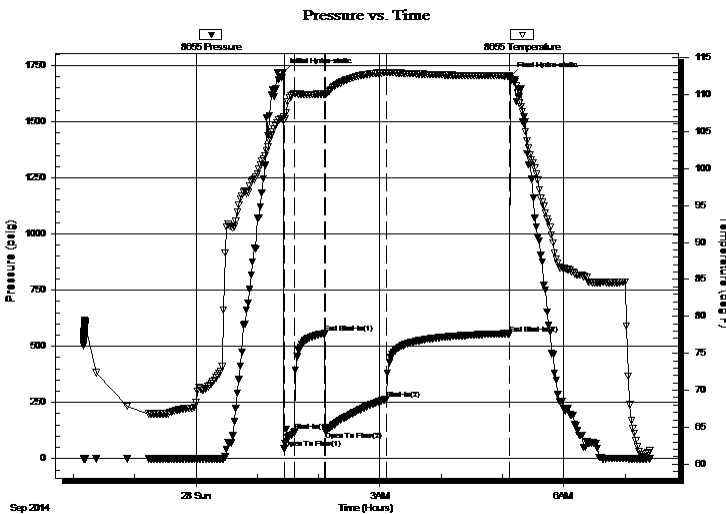
2014.09.28 @ 01:25:30

Time Off Btm:

2014.09.28 @ 05:07:30

TEST COMMENT: 10-IF-BOB in 9 mins.
30-ISI-No Return.
60-FF-BOB in 11 mins.
120-FSI-3" Return, died back to 1"

PRESSURE SUMMARY



Time (Min.)	Pressure (psig)	Temp (deg F)	Annotation
0	1717.87	107.04	Initial Hydro-static
1	44.32	106.51	Open To Flow (1)
11	122.22	110.14	Shut-In(1)
41	557.02	110.07	End Shut-In(1)
41	123.16	110.07	Open To Flow (2)
101	265.54	112.98	Shut-In(2)
221	553.67	112.52	End Shut-In(2)
222	1701.71	112.18	Final Hydro-static

Recovery

Length (ft)	Description	Volume (bbl)
315.00	MCW, 25% m, 75% w, with oil spots	3.33
126.00	V SOWCM, 5% o, 25% w, 70% m	1.77
30.00	O, 100% o	0.42
0.00	GIP-126' 100% g	0.00

Gas Rates

	Choke (inches)	Pressure (psig)	Gas Rate (Mcf/d)



**TRILOBITE
TESTING, INC.**

DRILL STEM TEST REPORT

Cholla Production, LLC

Sec. 12-11s-23w Trego, KS

10390 Bradford Rd
Suite 201
Littleton, CO 80127
ATTN: Justin Carter/Emily

Patterson #2-12

Job Ticket: 58750

DST#: 1

Test Start: 2014.09.27 @ 22:10:00

GENERAL INFORMATION:

Formation: **LKC "A-B"**

Deviated: **No Whipstock:** ft (KB)

Time Tool Opened: 01:26:00

Time Test Ended: 07:24:00

Test Type: **Conventional Bottom Hole (Initial)**

Tester: **Phillip Gage**

Unit No: **62**

Interval: 3508.00 ft (KB) To 3562.00 ft (KB) (TVD)

Reference Elevations: **2244.00 ft (KB)**

Total Depth: **3562.00 ft (KB) (TVD)**

2239.00 ft (CF)

Hole Diameter: **7.88 inches** Hole Condition: **Fair**

KB to GR/CF: **5.00 ft**

Serial #: 8651 Inside

Press @ Run Depth: psig @ **3509.00 ft (KB)**

Capacity: **8000.00 psig**

Start Date: **2014.09.27**

End Date: **2014.09.28**

Last Calib.: **2014.09.28**

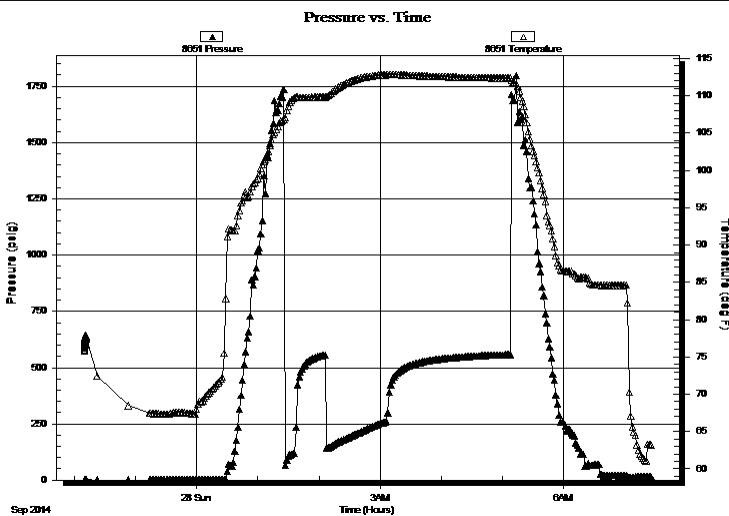
Start Time: **22:10:01**

End Time: **07:25:30**

Time On Btm:

Time Off Btm:

TEST COMMENT: 10-IF-BOB in 9 mins.
30-ISI-No Return.
60-FF-BOB in 11 mins.
120-FSI-3" Return, died back to 1"



PRESSURE SUMMARY

Time (Min.)	Pressure (psig)	Temp (deg F)	Annotation

Recovery

Length (ft)	Description	Volume (bbl)
315.00	MCW, 25% m, 75% w, with oil spots	3.33
126.00	V SOWCM, 5% o, 25% w, 70% m	1.77
30.00	O, 100% o	0.42
0.00	GIP-126' 100% g	0.00

Gas Rates

Choke (inches)	Pressure (psig)	Gas Rate (Mcf/d)



**TRILOBITE
TESTING, INC.**

DRILL STEM TEST REPORT

FLUID SUMMARY

Cholla Production, LLC

Sec. 12-11s-23w Trego, KS

10390 Bradford Rd
Suite 201
Littleton, CO 80127
ATTN: Justin Carter/Emily

Patterson #2-12

Job Ticket: 58750

DST#: 1

Test Start: 2014.09.27 @ 22:10:00

Mud and Cushion Information

Mud Type: Gel Chem
Mud Weight: 9.00 lb/gal
Viscosity: 59.00 sec/qt
Water Loss: 6.00 in³
Resistivity: ohm.m
Salinity: 700.00 ppm
Filter Cake: 2.00 inches

Cushion Type:
Cushion Length: ft
Cushion Volume: bbl
Gas Cushion Type:
Gas Cushion Pressure: psig

Oil API: 38 deg API
Water Salinity: 98000 ppm

Recovery Information

Recovery Table

Length ft	Description	Volume bbl
315.00	MCW, 25% <i>m</i> , 75% <i>w</i> , with oil spots	3.325
126.00	VSOWCM, 5% <i>o</i> , 25% <i>w</i> , 70% <i>m</i>	1.767
30.00	O, 100% <i>o</i>	0.421
0.00	GIP-126' 100% <i>g</i>	0.000

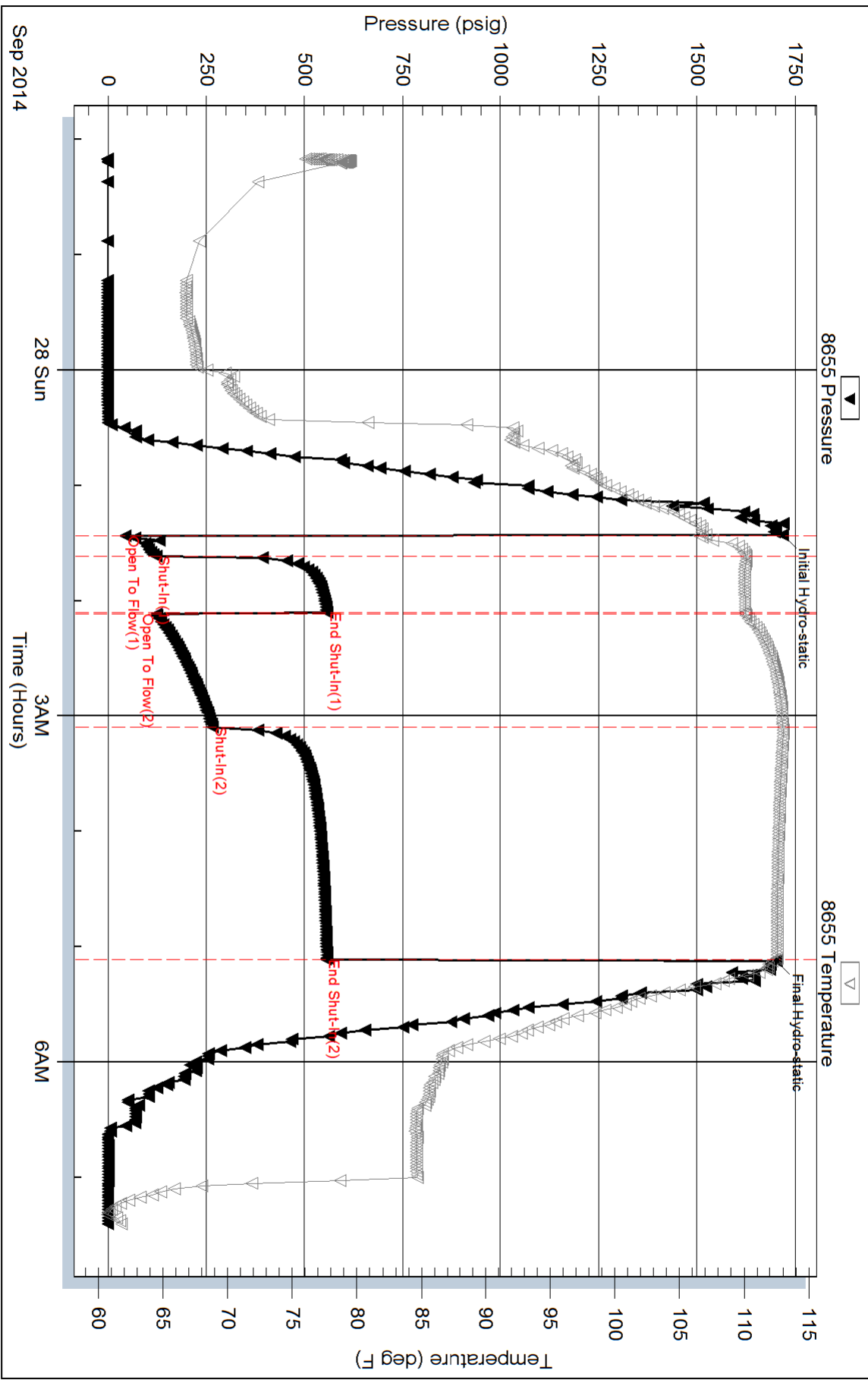
Total Length: 471.00 ft Total Volume: 5.513 bbl

Num Fluid Samples: 0 Num Gas Bombs: 0 Serial #:

Laboratory Name: Laboratory Location:

Recovery Comments: .100 @ 59 degrees = 98000 Salinity

Pressure vs. Time



Serial #: 8651

Inside

Cholla Production, LLC

Patterson #2-12

DST Test Number: 1

