



**TRILOBITE  
TESTING, INC.**

# DRILL STEM TEST REPORT

Vincent Oil Corporation  
155 N. Market STE 700  
Wichita, Ks. 67202  
ATTN: Jim Hall

**32-29s-24w Ford Co., Ks.**

**Marfam #3-32**

Job Ticket: 56552

**DST#: 4**

Test Start: 2014.07.18 @ 17:40:00

## GENERAL INFORMATION:

Formation: **Mississippi**

Deviated: No Whipstock: 0.00 ft (KB)

Time Tool Opened: 19:47:45

Time Test Ended: 23:19:00

Test Type: Conventional Bottom Hole (Reset)

Tester: Cornelio Landa III

Unit No: 67

**Interval: 5380.00 ft (KB) To 5467.00 ft (KB) (TVD)**

Reference Elevations: 2585.00 ft (KB)

Total Depth: 5467.00 ft (KB) (TVD)

2573.00 ft (CF)

Hole Diameter: 7.88 inches Hole Condition: Fair

KB to GR/CF: 12.00 ft

**Serial #: 8968 Outside**

Press @ RunDepth: 26.07 psig @ 5384.00 ft (KB)

Capacity: 8000.00 psig

Start Date: 2014.07.18

End Date:

2014.07.18

Last Calib.:

2014.07.18

Start Time: 17:40:05

End Time:

23:18:59

Time On Btm:

2014.07.18 @ 19:47:30

Time Off Btm:

2014.07.18 @ 21:04:30

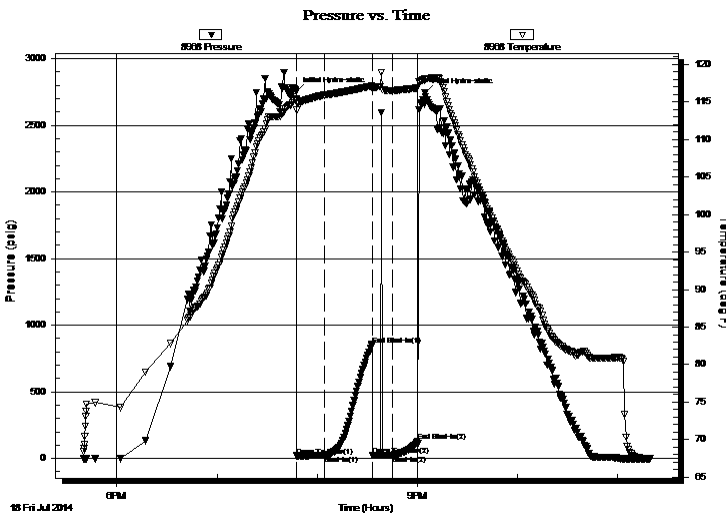
TEST COMMENT: IF: Weak surface blow -Died in 3 1/2 min.

IS: No return

FF: No blow -flushed tool-Good surge-Weak surface blow -Died in 3 1/2 min.

FS: No return

## PRESSURE SUMMARY



Time (Min.)	Pressure (psig)	Temp (deg F)	Annotation
0	2752.04	115.39	Initial Hydro-static
1	19.67	113.90	Open To Flow (1)
17	22.17	115.91	Shut-In(1)
46	854.64	117.10	End Shut-In(1)
46	22.78	116.75	Open To Flow (2)
58	26.07	116.50	Shut-In(2)
73	126.99	116.87	End Shut-In(2)
77	2744.08	118.03	Final Hydro-static

## Recovery

Length (ft)	Description	Volume (bbl)
10.00	Mud w /Trace of oil 100m	0.14

\* Recovery from multiple tests

## Gas Rates

Choke (inches)	Pressure (psig)	Gas Rate (Mcf/d)



**TRILOBITE  
TESTING, INC.**

# DRILL STEM TEST REPORT

**FLUID SUMMARY**

Vincent Oil Corporation

**32-29s-24w Ford Co., Ks.**

155 N. Market STE 700  
Wichita, Ks. 67202

**Marfam #3-32**

Job Ticket: 56552

**DST#: 4**

ATTN: Jim Hall

Test Start: 2014.07.18 @ 17:40:00

## Mud and Cushion Information

Mud Type: Gel Chem

Cushion Type:

Oil API:

deg API

Mud Weight: 9.00 lb/gal

Cushion Length:

ft

Water Salinity:

ppm

Viscosity: 55.00 sec/qt

Cushion Volume:

bbbl

Water Loss: 9.57 in<sup>3</sup>

Gas Cushion Type:

Resistivity: 0.00 ohm.m

Gas Cushion Pressure:

psig

Salinity: 9200.00 ppm

Filter Cake: 1.00 inches

## Recovery Information

Recovery Table

Length ft	Description	Volume bbl
10.00	Mud w/Trace of oil 100m	0.140

Total Length: 10.00 ft      Total Volume: 0.140 bbl

Num Fluid Samples: 0

Num Gas Bombs: 0

Serial #:

Laboratory Name:

Laboratory Location:

Recovery Comments:

