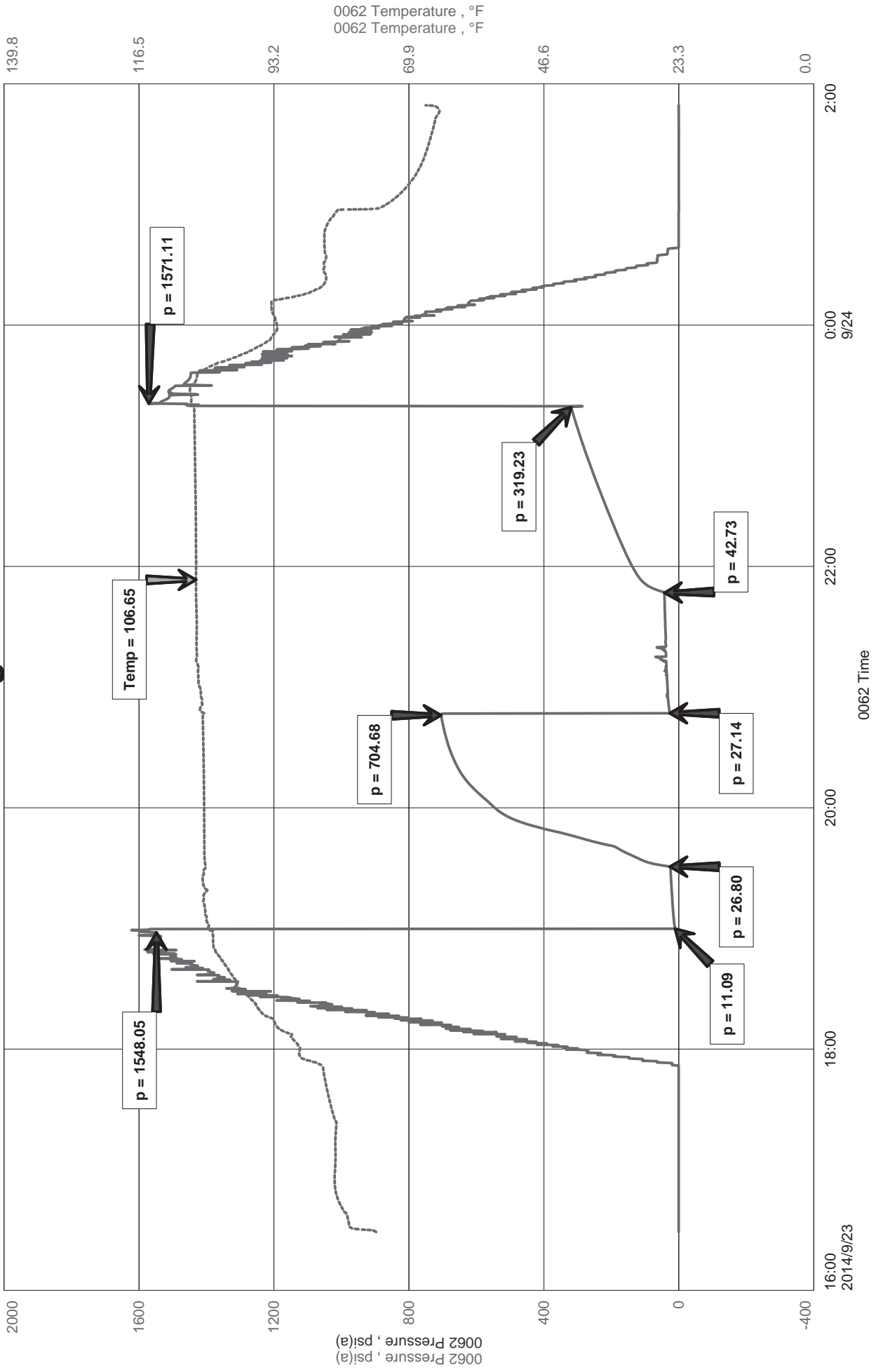


Trans Pacific Corporation
Dst 1 Lan (3161-3248)
Start Test Date: 2014/09/23
Final Test Date: 2014/09/24

Ludwig A 1-32
Formation: Dst 1 Lan (3161-3248)
Pool: Pool ext
Job Number: RR090

Ludwig 1-32





Diamond Testing LLC
 P.O. Box 157
 HoisingtonKS 67544

Ricky Ray - Tester
(620) 617-7261

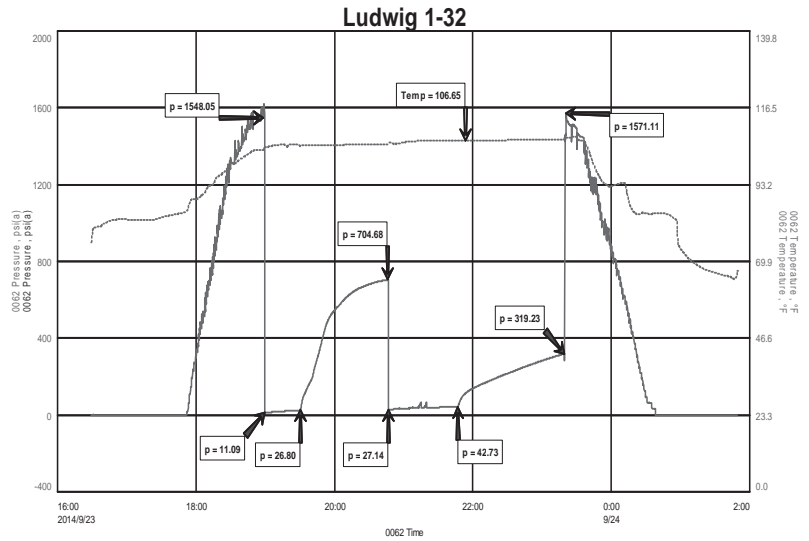
Wellsite Report

General Information

Company Name	Trans Pacific Corporation
Contact	Beth A Isern
Well Operator	Trans Pacific Corporation
Well Name	Ludwig A 1-32
Surface Location	Sec: 32-16s-13w (Barton County)
Field	Trapp
Well Type	Vertical
Pool	Pool ext
Test Purpose (AEUB)	Initial Test
Qualified By	Alex Chapin
Gauge Name	0062

Test Information

Job Number	RR090
Test Type	Drill Stem Test
Well Fluid Type	01 Oil
Formation	Dst 1 Lan (3161-3248)
Start Test Date	2014/09/23 YYYY/MM/DD
Start Test Time	16:29:00 HH:mm:ss
Final Test Date	2014/09/24 YYYY/MM/DD
Final Test Time	01:48:00 HH:mm:ss



Test Results

Recovery:

65' M 100% M

Tool Sample: 100% m



DIAMOND TESTING
P.O. Box 157
HOISINGTON, KANSAS 67544
(800) 542-7313
DRILL-STEM TEST TICKET
FILE: Ludwig A 1-32

TIME ON: 14:29 Sep 23
TIME OFF: 01:48 Sep 24

Company Trans Pacific Corporation Lease & Well No. Ludwig 1-32
Contractor Southwind Drilling Charge to Trans Pacific Corporation
Elevation 1941 Est Formation _____ Lan Effective Pay _____ Ft. Ticket No. RR090
Date 09/23/2014 Sec. 32 Twp. _____ 16 S Range _____ 13 W County _____ Barton State KANSAS
Test Approved By Alexn Chapin Diamond Representative RICKY RAY

Formation Test No. 1 Interval Tested from 3161 ft. to 3248 ft. Total Depth 3248 ft.
Packer Depth 3156 ft. Size 6 3/4 in. Packer depth _____ ft. Size 6 3/4 in.
Packer Depth 3161 ft. Size 6 3/4 in. Packer depth _____ ft. Size 6 3/4 in.

Depth of Selective Zone Set _____
Top Recorder Depth (Inside) 3151 ft. Recorder Number 0062 Cap. 5000 P.S.I.
Bottom Recorder Depth (Outside) 3229 ft. Recorder Number 5954 Cap. 5000 P.S.I.
Below Straddle Recorder Depth _____ ft. Recorder Number _____ Cap. _____ P.S.I.

Mud Type CHEMICAL Viscosity 52 Drill Collar Length 0 ft. I.D. 2 1/4 in.
Weight 9.4 Water Loss 8.8 cc. Weight Pipe Length 0 ft. I.D. 2 7/8 in.
Chlorides 4700 P.P.M. Drill Pipe Length 3138 ft. I.D. 3 1/2 in.
Jars: Make STERLING Serial Number na Test Tool Length 23 ft. Tool Size 3 1/2-IF in.
Did Well Flow? NA Reversed Out NA Anchor Length 87(24P) ft. Size 4 1/2-FH in.
Main Hole Size 7 7/8 Tool Joint Size 4 1/2 xh in. Surface Choke Size 1 in. Bottom Choke Size 5/8 in.

Blow: 1st Open: WSB Built to 3 1/4 inches in 30 mins NOBB
2nd Open: NO Blow Built to 1 3/4 inches in 60 mins NOBB

Recovered 65 ft. of M 100 % M
Recovered _____ ft. of _____
Recovered _____ ft. of _____
Recovered _____ ft. of _____

Recovered _____ ft. of _____	Price Job
Recovered _____ ft. of _____	Other Charges
Remarks: Tool Sample: <u>100 % M</u>	Insurance
	Total

Time Set Packer(s) 7:00PM A.M. P.M. Time Started Off Bottom 11:15PM A.M. P.M. Maximum Temperature 107

Initial Hydrostatic Pressure..... (A) 1548 P.S.I.
Initial Flow Period..... Minutes 30 (B) 11 P.S.I. to (C) 27 P.S.I.
Initial Closed In Period..... Minutes 75 (D) 705 P.S.I.
Final Flow Period..... Minutes 60 (E) 27 P.S.I. to (F) 43 P.S.I.
Final Closed In Period..... Minutes 90 (G) 319 P.S.I.
Final Hydrostatic Pressure..... (H) 1571 P.S.I.

Diamond Testing shall not be liable for damages of any kind to the property or personnel of the one for whom a test is made or for any loss suffered or sustained, directly or indirectly, through the use of its equipment, or its statement or opinion concerning the result of any test. Tools lost or damaged in the hole shall be paid for at cost by the party for whom the test is made.