

**TRILOBITE
TESTING, INC.**

DRILL STEM TEST REPORT

Red Oak Energy Inc.
7701 E Kellogg Dr STE 710
Wichita KS 67207
ATTN: Pat Deenihan

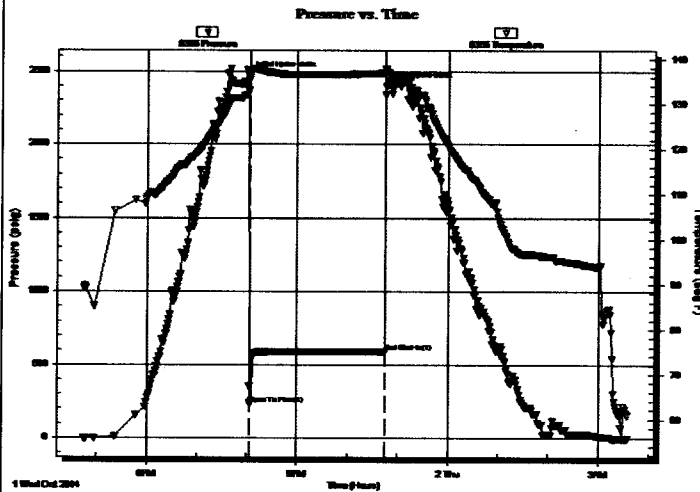
1 15s 41w Wallace, KS
Smith HF Unit #1
Job Ticket: 57441 **DST#: 1**
Test Start: 2014.10.01 @ 16:45:00

GENERAL INFORMATION:

Formation: **Morrow**
Deviated: No Whipstock: 0.00 ft (KB)
Time Tool Opened: 20:03:00
Time Test Ended: 03:34:00
Test Type: Conventional Bottom Hole (Initial)
Tester: Bradley Walter
Unit No: 69
Interval: **4898.00 ft (KB) To 4953.00 ft (KB) (TVD)**
Reference Elevations: 3728.00 ft (KB)
Total Depth: 4953.00 ft (KB) (TVD) 3714.00 ft (CF)
Hole Diameter: 7.88 inches Hole Condition: Good KB to GR/CF: 14.00 ft

Serial #: 8365 Inside
Press@RunDepth: 587.03 psig @ 4899.00 ft (KB) Capacity: 8000.00 psig
Start Date: 2014.10.01 End Date: 2014.10.02 Last Calib.: 2014.10.02
Start Time: 16:45:05 End Time: 03:34:00 Time On Btm: 2014.10.01 @ 20:01:45
Time Off Btm: 2014.10.01 @ 22:46:00

TEST COMMENT: IF: Tool slid 15 feet and took on mud - 8" blow, receded and died.
IS: No return.
FF: No blow.
FSI: No return.



PRESSURE SUMMARY

Time (Min.)	Pressure (psig)	Temp (deg F)	Annotation
0	2470.47	133.10	Initial Hydro-static
2	231.94	135.92	Open To Flow (1)
163	587.03	136.95	End Shut-In(1)
165	2399.80	137.48	Final Hydro-static

Recovery

Length (ft)	Description	Volume (bbl)
330.00	Mud 100m (thick coagulated)	1.62

Gas Rates

Choke (inches)	Pressure (psig)	Gas Rate (Mcf/d)