



## DRILL STEM TEST REPORT

Prepared For: **McCoy Petroleum Corporation**

9342 E Central  
Wichita, KS 67206

ATTN: Zach Wiele

### **MTPRC 'A' #3-27**

#### **27-30s-19w Kiowa,KS**

Start Date: 2014.08.20 @ 06:29:19

End Date: 2014.08.20 @ 16:12:04

Job Ticket #: 54133                      DST #: 1

Trilobite Testing, Inc  
1515 Commerce Parkway Hays, KS 67601  
ph: 785-625-4778 fax: 785-625-5620

Printed: 2014.08.22 @ 14:20:52



**TRILOBITE TESTING, INC**

# DRILL STEM TEST REPORT

McCoy Petroleum Corporation

**27-30s-19w Kiowa,KS**

9342 E Central  
Wichita, KS 67206

**MTPRC 'A' #3-27**

Job Ticket: 54133

**DST#: 1**

ATTN: Zach Wiele

Test Start: 2014.08.20 @ 06:29:19

## GENERAL INFORMATION:

Formation: **Mississippi**

Deviated: No Whipstock: ft (KB)

Time Tool Opened: 08:47:34

Time Test Ended: 16:12:04

Test Type: Conventional Bottom Hole (Initial)

Tester: Matt Smith

Unit No: 53

**Interval: 5086.00 ft (KB) To 5131.00 ft (KB) (TVD)**

Reference Elevations: 2251.00 ft (KB)

Total Depth: 5131.00 ft (KB) (TVD)

2238.00 ft (CF)

Hole Diameter: 7.88 inches Hole Condition: Fair

KB to GR/CF: 13.00 ft

**Serial #: 6773 Inside**

Press@RunDepth: 55.33 psig @ 5087.00 ft (KB)

Capacity: 8000.00 psig

Start Date: 2014.08.20

End Date:

2014.08.20

Last Calib.:

2014.08.20

Start Time: 06:29:24

End Time:

16:12:04

Time On Btm:

2014.08.20 @ 08:44:34

Time Off Btm:

2014.08.20 @ 13:24:34

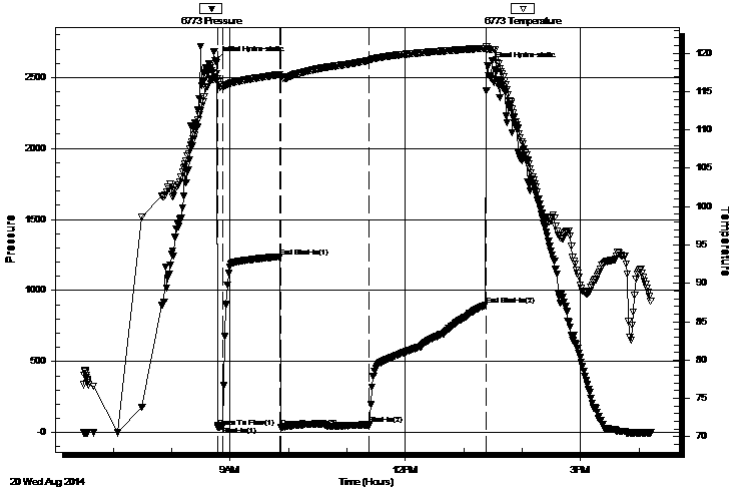
TEST COMMENT: IF: Strong blow . B.O.B. in 30 secs.

IS: No blow .

FF: Strong blow .B.O.B. in 10 secs. G.T.S. in 40 mins. Gauged gas. See gas report.

FS: No blow .

Pressure vs. Time



## PRESSURE SUMMARY

Time (Min.)	Pressure (psig)	Temp (deg F)	Annotation
0	2615.94	117.37	Initial Hydro-static
3	38.74	116.29	Open To Flow (1)
8	45.01	115.64	Shut-In(1)
67	1238.70	117.23	End Shut-In(1)
68	34.03	116.97	Open To Flow (2)
159	55.33	119.06	Shut-In(2)
278	897.80	120.65	End Shut-In(2)
280	2579.45	120.53	Final Hydro-static

## Recovery

Length (ft)	Description	Volume (bbl)
60.00	GOWCM 6%g 1%o 1%w 92%m	0.30
20.00	Drig Mud 100%m w/trc o trc w	0.10
0.00	G.I.P. G.T.S. 100%g	0.00

## Gas Rates

	Choke (inches)	Pressure (psig)	Gas Rate (Mcf/d)
First Gas Rate	0.25	2.00	26.02
Last Gas Rate	0.25	3.00	27.60
Max. Gas Rate	0.25	3.00	27.60



**TRILOBITE TESTING, INC**

# DRILL STEM TEST REPORT

McCoy Petroleum Corporation

**27-30s-19w Kiowa, KS**

9342 E Central  
Wichita, KS 67206

**MTPRC 'A' #3-27**

ATTN: Zach Wiele

Job Ticket: 54133 **DST#: 1**

Test Start: 2014.08.20 @ 06:29:19

## GENERAL INFORMATION:

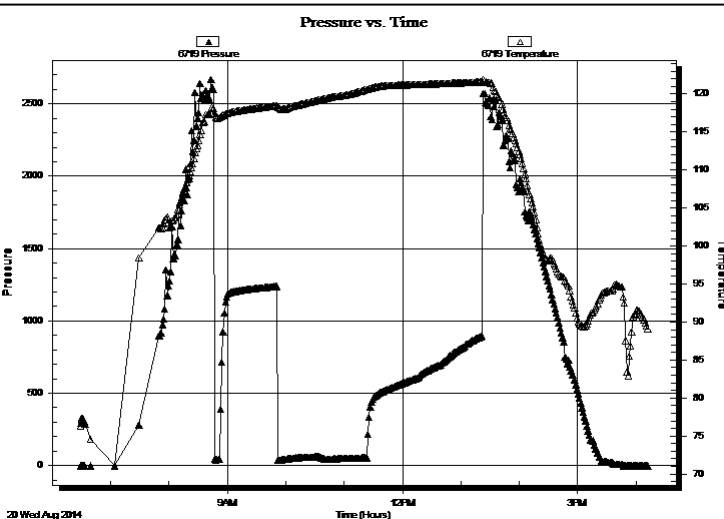
Formation: **Mississippi**  
 Deviated: No Whipstock: ft (KB)  
 Time Tool Opened: 08:47:34  
 Time Test Ended: 16:12:04  
 Interval: **5086.00 ft (KB) To 5131.00 ft (KB) (TVD)**  
 Total Depth: 5131.00 ft (KB) (TVD)  
 Hole Diameter: 7.88 inches  
 Hole Condition: Fair  
 Test Type: Conventional Bottom Hole (Initial)  
 Tester: Matt Smith  
 Unit No: 53  
 Reference Elevations: 2251.00 ft (KB)  
 2238.00 ft (CF)  
 KB to GR/CF: 13.00 ft

**Serial #: 6719**

**Outside**

Press@RunDepth: psig @ 5087.00 ft (KB)  
 Start Date: 2014.08.20 End Date: 2014.08.20 Capacity: 8000.00 psig  
 Start Time: 06:29:13 End Time: 16:11:53 Last Calib.: 2014.08.20  
 Time On Btm:  
 Time Off Btm:

**TEST COMMENT:** IF: Strong blow . B.O.B. in 30 secs.  
 IS!: No blow .  
 FF: Strong blow .B.O.B. in 10 secs. G.T.S. in 40 mins. Gauged gas. See gas report.  
 FS!: No blow .



## PRESSURE SUMMARY

Time (Min.)	Pressure (psig)	Temp (deg F)	Annotation

## Recovery

Length (ft)	Description	Volume (bbl)
60.00	GOWCM 6%g 1%o 1%w 92%m	0.30
20.00	Drig Mud 100% m w /trc o trc w	0.10
0.00	G.I.P. G.T.S. 100%g	0.00

## Gas Rates

	Choke (inches)	Pressure (psig)	Gas Rate (Mcf/d)
First Gas Rate	0.25	2.00	26.02
Last Gas Rate	0.25	3.00	27.60
Max. Gas Rate	0.25	3.00	27.60



**TRILOBITE  
TESTING, INC**

# DRILL STEM TEST REPORT

**TOOL DIAGRAM**

McCoy Petroleum Corporation

**27-30s-19w Kiowa,KS**

9342 E Central  
Wichita, KS 67206

**MTPRC 'A' #3-27**

Job Ticket: 54133

**DST#: 1**

ATTN: Zach Wiele

Test Start: 2014.08.20 @ 06:29:19

## Tool Information

Drill Pipe:	Length: 4777.00 ft	Diameter: 3.80 inches	Volume: 67.01 bbl	Tool Weight: 2400.00 lb
Heavy Wt. Pipe:	Length: 0.00 ft	Diameter: 0.00 inches	Volume: 0.00 bbl	Weight set on Packer: 20000.00 lb
Drill Collar:	Length: 300.00 ft	Diameter: 2.25 inches	Volume: 1.48 bbl	Weight to Pull Loose: 92000.00 lb
			<u>Total Volume: 68.49 bbl</u>	Tool Chased 0.00 ft
Drill Pipe Above KB:	19.00 ft			String Weight: Initial 86000.00 lb
Depth to Top Packer:	5086.00 ft			Final 87000.00 lb
Depth to Bottom Packer:	ft			
Interval between Packers:	45.00 ft			
Tool Length:	73.00 ft			
Number of Packers:	2	Diameter: 6.75 inches		

Tool Comments:

## Tool Description

Tool Description	Length (ft)	Serial No.	Position	Depth (ft)	Accum. Lengths
Change Over Sub	1.00			5059.00	
Shut In Tool	5.00			5064.00	
Hydraulic tool	5.00			5069.00	
Jars	5.00			5074.00	
Safety Joint	3.00			5077.00	
Packer	4.00			5081.00	28.00 Bottom Of Top Packer
Packer	5.00			5086.00	
Stubb	1.00			5087.00	
Recorder	0.00	6719	Outside	5087.00	
Recorder	0.00	6773	Inside	5087.00	
Perforations	1.00			5088.00	
Change Over Sub	1.00			5089.00	
Blank Spacing	32.00			5121.00	
Change Over Sub	1.00			5122.00	
Perforations	6.00			5128.00	
Bullnose	3.00			5131.00	45.00 Bottom Packers & Anchor
<b>Total Tool Length:</b>	<b>73.00</b>				



**TRILOBITE  
TESTING, INC**

# DRILL STEM TEST REPORT

**FLUID SUMMARY**

McCoy Petroleum Corporation

**27-30s-19w Kiowa,KS**

9342 E Central  
Wichita, KS 67206

**MTPRC 'A' #3-27**

Job Ticket: 54133

**DST#: 1**

ATTN: Zach Wiele

Test Start: 2014.08.20 @ 06:29:19

## Mud and Cushion Information

Mud Type: Gel Chem

Cushion Type:

Oil API:

deg API

Mud Weight: 9.00 lb/gal

Cushion Length:

ft

Water Salinity:

8000 ppm

Viscosity: 53.00 sec/qt

Cushion Volume:

bbf

Water Loss: 9.19 in<sup>3</sup>

Gas Cushion Type:

Resistivity: 0.00 ohm.m

Gas Cushion Pressure:

psig

Salinity: 8000.00 ppm

Filter Cake: 0.20 inches

## Recovery Information

Recovery Table

Length ft	Description	Volume bbf
60.00	GOWCM 6%g 1%o 1%w 92%m	0.295
20.00	Drig Mud 100%m w /trc o trc w	0.098
0.00	G.I.P. G.T.S. 100%g	0.000

Total Length: 80.00 ft

Total Volume: 0.393 bbf

Num Fluid Samples: 1

Num Gas Bombs: 1

Serial #: MAS Pratt

Laboratory Name: Caraway

Laboratory Location: Liberal, KS

Recovery Comments:

Serial #: 6773

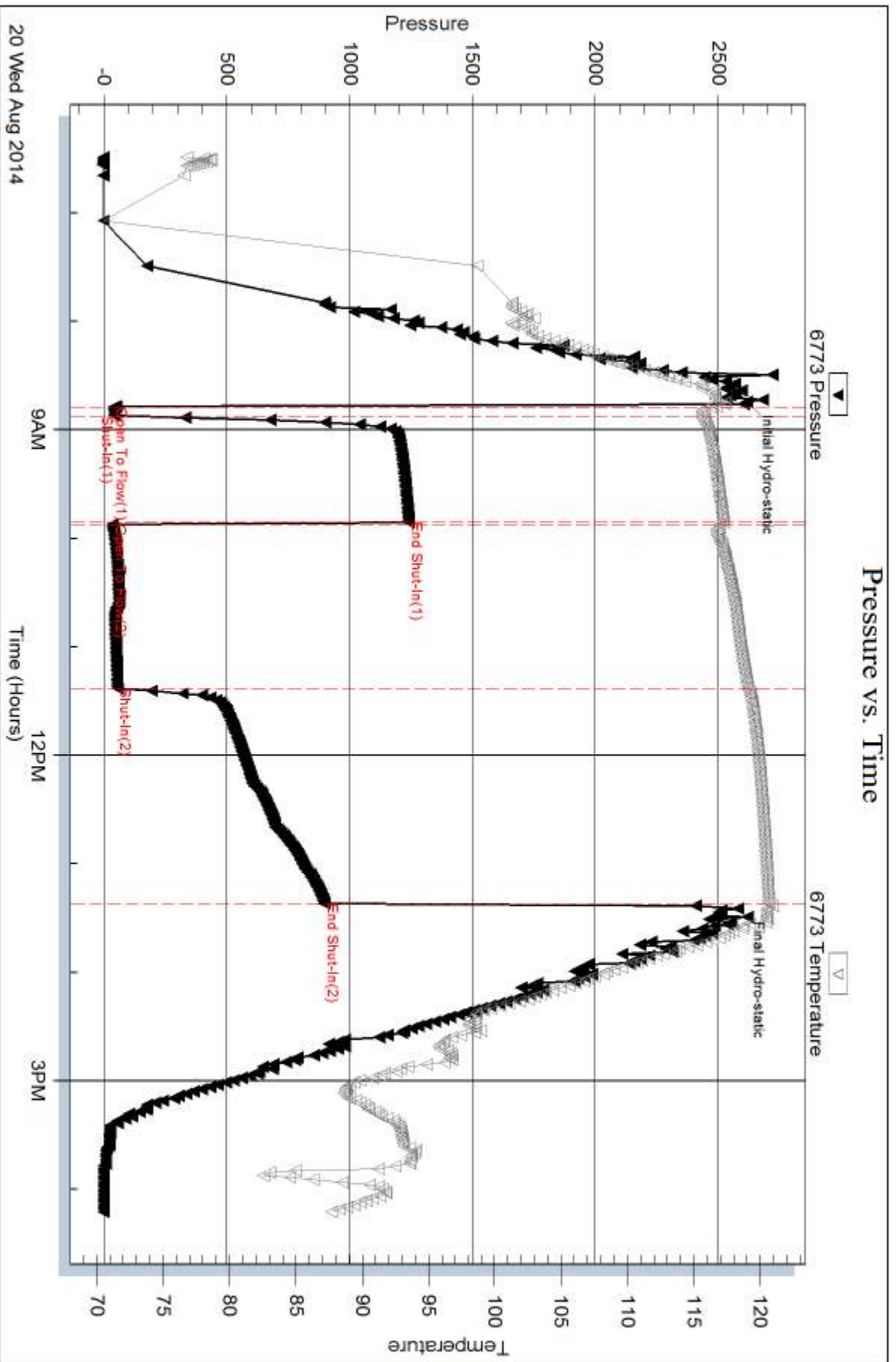
Inside

McCoy Petroleum Corporation

MTRC 'A' #3-27

DST Test Number: 1

### Pressure vs. Time



Trilobite Testing, Inc

Ref. No: 54133

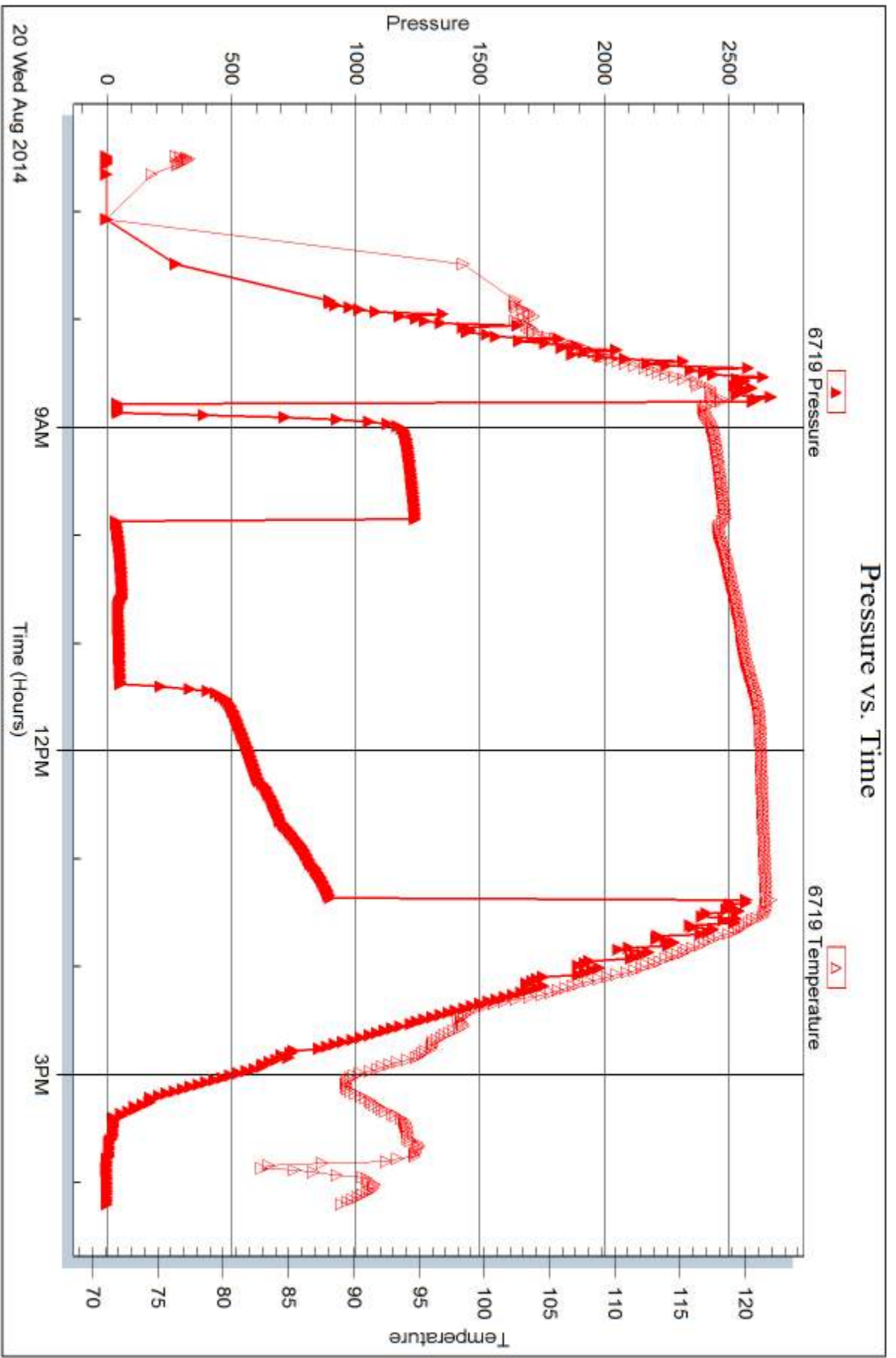
Printed: 2014.08.22 @ 14:20:55

Serial #: 6719

Outside McCoy Petroleum Corporation

MTRC 'A' #3-27

DST Test Number: 1



Trilobite Testing, Inc

Ref. No: 54133

Printed: 2014.08.22 @ 14:20:55



## DRILL STEM TEST REPORT

Prepared For: **McCoy Petroleum Corporation**

9342 E Central  
Wichita, KS 67206

ATTN: Zach Wiele

### **MTPRC 'A' #3-27**

#### **27-30s-19w Kiowa,KS**

Start Date: 2014.08.21 @ 00:06:59

End Date: 2014.08.21 @ 08:43:29

Job Ticket #: 54134                      DST #: 2

Trilobite Testing, Inc  
1515 Commerce Parkway Hays, KS 67601  
ph: 785-625-4778 fax: 785-625-5620

Printed: 2014.08.22 @ 14:11:28





**TRILOBITE  
TESTING, INC**

# DRILL STEM TEST REPORT

McCoy Petroleum Corporation

**27-30s-19w Kiowa,KS**

9342 E Central  
Wichita, KS 67206

**MTPRC 'A' #3-27**

Job Ticket: 54134

**DST#: 2**

ATTN: Zach Wiele

Test Start: 2014.08.21 @ 00:06:59

## GENERAL INFORMATION:

Formation: **Mississippi**

Deviated: No Whipstock: ft (KB)

Time Tool Opened: 03:10:14

Time Test Ended: 08:43:29

Test Type: Conventional Bottom Hole (Reset)

Tester: Matt Smith

Unit No: 53

**Interval: 5131.00 ft (KB) To 5146.00 ft (KB) (TVD)**

Reference Elevations: 2251.00 ft (KB)

Total Depth: 5146.00 ft (KB) (TVD)

2238.00 ft (CF)

Hole Diameter: 7.88 inches Hole Condition: Fair

KB to GR/CF: 13.00 ft

**Serial #: 6773**

**Inside**

Press@RunDepth: 25.38 psig @ 5132.00 ft (KB)

Capacity: 8000.00 psig

Start Date: 2014.08.21

End Date:

2014.08.21

Last Calib.:

2014.08.21

Start Time: 00:07:04

End Time:

08:43:29

Time On Btm:

2014.08.21 @ 03:03:44

Time Off Btm:

2014.08.21 @ 06:20:44

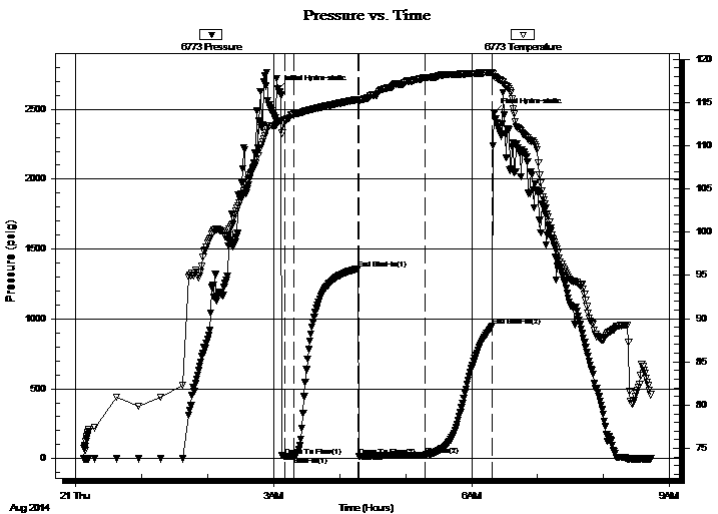
TEST COMMENT: IF: Weak blow . Surf., - 1/4".

IS: No blow .

FF: No blow .

FS: No blow .

## PRESSURE SUMMARY



Time (Min.)	Pressure (psig)	Temp (deg F)	Annotation
0	2644.53	112.69	Initial Hydro-static
7	14.53	112.95	Open To Flow (1)
15	16.35	113.65	Shut-In(1)
73	1359.48	115.35	End Shut-In(1)
74	17.62	115.14	Open To Flow (2)
134	25.38	117.87	Shut-In(2)
195	948.32	118.48	End Shut-In(2)
197	2478.71	118.01	Final Hydro-static

## Recovery

Length (ft)	Description	Volume (bbl)
10.00	Drig Mud 100%m	0.05

\* Recovery from multiple tests

## Gas Rates

Choke (inches)	Pressure (psig)	Gas Rate (Mcf/d)



**TRILOBITE  
TESTING, INC**

**DRILL STEM TEST REPORT**

McCoy Petroleum Corporation

**27-30s-19w Kiowa,KS**

9342 E Central  
Wichita, KS 67206

**MTPRC 'A' #3-27**

ATTN: Zach Wiele

Job Ticket: 54134

**DST#: 2**

Test Start: 2014.08.21 @ 00:06:59

**GENERAL INFORMATION:**

Formation: **Mississippi**

Deviated: No Whipstock: ft (KB)

Time Tool Opened: 03:10:14

Time Test Ended: 08:43:29

Test Type: Conventional Bottom Hole (Reset)

Tester: Matt Smith

Unit No: 53

**Interval: 5131.00 ft (KB) To 5146.00 ft (KB) (TVD)**

Reference Elevations: 2251.00 ft (KB)

Total Depth: 5146.00 ft (KB) (TVD)

2238.00 ft (CF)

Hole Diameter: 7.88 inches Hole Condition: Fair

KB to GR/CF: 13.00 ft

**Serial #: 6719**

**Outside**

Press@RunDepth: psig @ 5132.00 ft (KB)

Capacity: 8000.00 psig

Start Date: 2014.08.21

End Date: 2014.08.21

Last Calib.: 2014.08.21

Start Time: 00:06:55

End Time: 08:43:05

Time On Btm:

Time Off Btm:

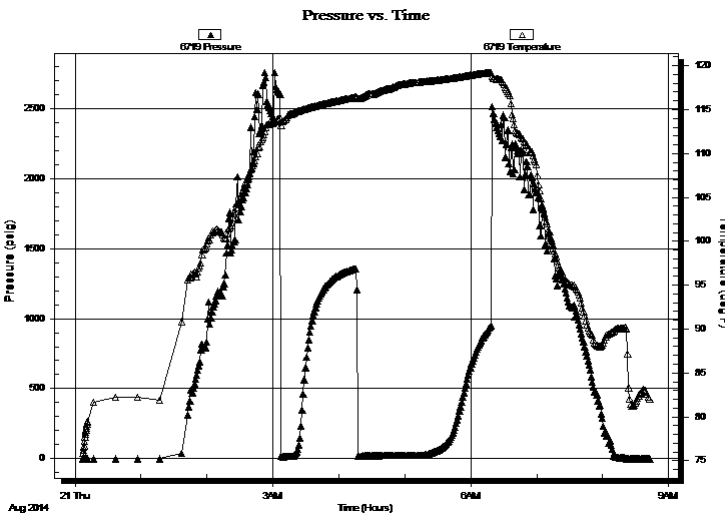
TEST COMMENT: IF: Weak blow . Surf., - 1/4".

IS: No blow .

FF: No blow .

FS: No blow .

**PRESSURE SUMMARY**



Time (Min.)	Pressure (psig)	Temp (deg F)	Annotation

**Recovery**

Length (ft)	Description	Volume (bbl)
10.00	Drig Mud 100%m	0.05

**Gas Rates**

	Choke (inches)	Pressure (psig)	Gas Rate (Mcf/d)

\* Recovery from multiple tests



**TRILOBITE  
TESTING, INC**

# DRILL STEM TEST REPORT

**TOOL DIAGRAM**

McCoy Petroleum Corporation

**27-30s-19w Kiowa,KS**

9342 E Central  
Wichita, KS 67206

**MTPRC 'A' #3-27**

Job Ticket: 54134

**DST#: 2**

ATTN: Zach Wiele

Test Start: 2014.08.21 @ 00:06:59

## Tool Information

Drill Pipe:	Length: 4809.00 ft	Diameter: 3.80 inches	Volume: 67.46 bbl	Tool Weight:	2400.00 lb
Heavy Wt. Pipe:	Length: 0.00 ft	Diameter: 0.00 inches	Volume: 0.00 bbl	Weight set on Packer:	24000.00 lb
Drill Collar:	Length: 300.00 ft	Diameter: 2.25 inches	Volume: 1.48 bbl	Weight to Pull Loose:	98000.00 lb
			<u>Total Volume: 68.94 bbl</u>	Tool Chased	0.00 ft
Drill Pipe Above KB:	6.00 ft			String Weight: Initial	88000.00 lb
Depth to Top Packer:	5131.00 ft			Final	88000.00 lb
Depth to Bottom Packer:	ft				
Interval between Packers:	15.00 ft				
Tool Length:	43.00 ft				
Number of Packers:	2	Diameter: 6.75 inches			

Tool Comments:

## Tool Description

Tool Description	Length (ft)	Serial No.	Position	Depth (ft)	Accum. Lengths
Change Over Sub	1.00			5104.00	
Shut In Tool	5.00			5109.00	
Hydraulic tool	5.00			5114.00	
Jars	5.00			5119.00	
Safety Joint	3.00			5122.00	
Packer	4.00			5126.00	28.00 Bottom Of Top Packer
Packer	5.00			5131.00	
Stubb	1.00			5132.00	
Recorder	0.00	6719	Outside	5132.00	
Recorder	0.00	6773	Inside	5132.00	
Perforations	11.00			5143.00	
Bullnose	3.00			5146.00	15.00 Bottom Packers & Anchor

**Total Tool Length: 43.00**



**TRILOBITE  
TESTING, INC**

# DRILL STEM TEST REPORT

**FLUID SUMMARY**

McCoy Petroleum Corporation

**27-30s-19w Kiowa,KS**

9342 E Central  
Wichita, KS 67206

**MTPRC 'A' #3-27**

Job Ticket: 54134

**DST#: 2**

ATTN: Zach Wiele

Test Start: 2014.08.21 @ 00:06:59

## Mud and Cushion Information

Mud Type: Gel Chem

Cushion Type:

Oil API:

deg API

Mud Weight: 9.00 lb/gal

Cushion Length:

ft

Water Salinity:

8000 ppm

Viscosity: 53.00 sec/qt

Cushion Volume:

bbf

Water Loss: 9.18 in<sup>3</sup>

Gas Cushion Type:

Resistivity: 0.00 ohm.m

Gas Cushion Pressure:

psig

Salinity: 8000.00 ppm

Filter Cake: 0.20 inches

## Recovery Information

Recovery Table

Length ft	Description	Volume bbf
10.00	Drig Mud 100%m	0.049

Total Length: 10.00 ft      Total Volume: 0.049 bbf

Num Fluid Samples: 0

Num Gas Bombs: 0

Serial #: none

Laboratory Name:

Laboratory Location:

Recovery Comments:

Serial #: 6773

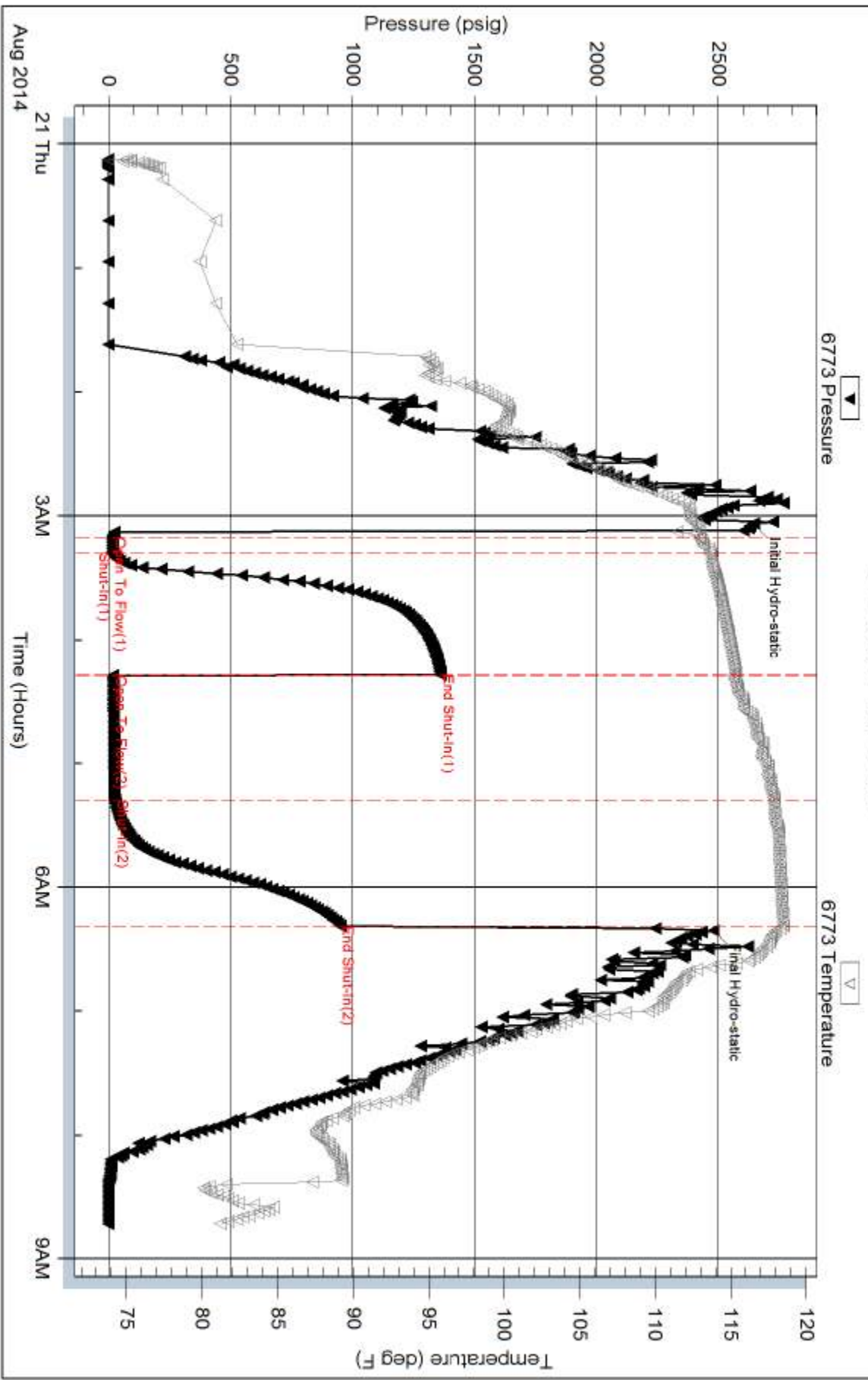
Inside

McCoy Petroleum Corporation

MTRC 'A' #3-27

DST Test Number: 2

### Pressure vs. Time

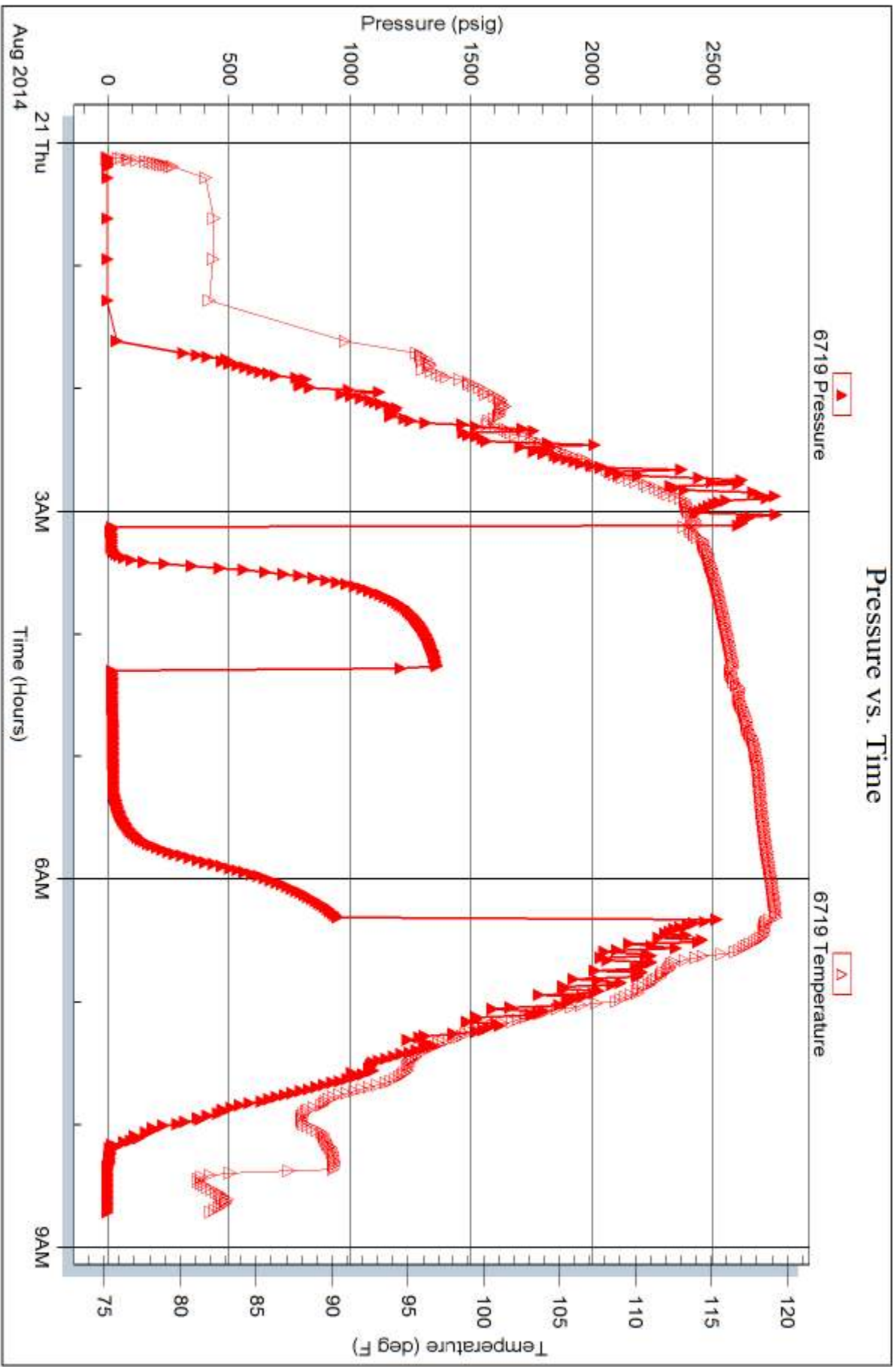


Serial #: 6719

Outside McCoy Petroleum Corporation

MTRC 'A' #3-27

DST Test Number: 2





# TRILOBITE TESTING INC.

1515 Commerce Parkway • Hays, Kansas 67601

## Test Ticket

NO. 54133

Well Name & No. MTPRC 'A' # 3-27 Test No. 1 Date 8/20/14  
 Company McCoy Petroleum Corporation Elevation 2252 KB 2238 GL  
 Address 9342 E Central Wichita, KS. 67206  
 Co. Rep / Geo. Zach Wiele (316) 209-0175 Rig Steering Drlg Rig # 5  
 Location: Sec. 27 Twp. 30s Rge. 19w Co. Kiowa State KS.

Interval Tested 5086 - 5131 Zone Tested Mississippi  
 Anchor Length 45' Drill Pipe Run 4,777 Mud Wt. 9.3  
 Top Packer Depth 5081 Drill Collars Run 300 Vis 53  
 Bottom Packer Depth 5086 Wt. Pipe Run 2 WL 9.2  
 Total Depth 5131 Chlorides 8,000 ppm System LCM 4#

Blow Description IF: Strong blow. B.O.B in 30 secs.

ISI: No blow.

FF: Strong blow. B.O.B in 10 secs. G.T.S. in 40 mins. Gauged GAS. See GAS Report.

FSI: No blow.

Rec	Feet of	%gas	%oil	%water	%mud
<u>G.T.S.</u>	<u>G.I.P. (G.T.S.)</u>	<u>100%</u>			
<u>20'</u>	<u>Drlg mud Trc/w &amp; Trc/o</u>				<u>100%</u>
<u>60'</u>	<u>G.O.W.C.M</u>	<u>6%</u>	<u>1%</u>	<u>1%</u>	<u>(92) 92%</u>
Rec	Feet of	%gas	%oil	%water	%mud
Rec	Feet of	%gas	%oil	%water	%mud

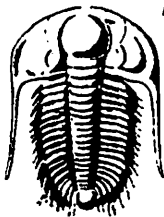
Rec Total 80' BHT 121° Gravity N.A. API RW N.C. @ — °F Chlorides 8,000 ppm

(A) Initial Hydrostatic 2616  Test 1350 T-On Location 0615  
 (B) First Initial Flow 39  Jars 250 T-Started 0629  
 (C) First Final Flow 45  Safety Joint 75 T-Open 0847  
 (D) Initial Shut-In 1239  Circ Sub \_\_\_\_\_ T-Pulled 1324  
 (E) Second Initial Flow 34  Hourly Standby \_\_\_\_\_ T-Out 1612  
 (F) Second Final Flow 55  Mileage 1037 159.65 Comments \_\_\_\_\_  
 (G) Final Shut-In 898  Sampler \_\_\_\_\_  
 (H) Final Hydrostatic 2579  Straddle \_\_\_\_\_

Initial Open 5  Ruined Shale Packer \_\_\_\_\_  
 Initial Shut-In 60  Ruined Packer \_\_\_\_\_  
 Final Flow 90  Extra Copies \_\_\_\_\_  
 Final Shut-In 120  Extra Recorder \_\_\_\_\_ Sub Total 0  
 Day Standby \_\_\_\_\_ Total 1834.65  
 Accessibility \_\_\_\_\_ MP/DST Disc't \_\_\_\_\_  
 Sub Total 1834.65

Approved By \_\_\_\_\_ Our Representative [Signature]

Trilobite Testing Inc. shall not be liable for damaged of any kind of the property or personnel of the one for whom a test is made, or for any loss suffered or sustained, directly or indirectly, through the use of its equipment, or its statements or opinion concerning the results of any test, tools lost or damaged in the hole shall be paid for at cost by the party for whom the test is made.



# TRILOBITE TESTING INC.

P.O. Box 362 • Hays, Kansas 67601 • (785) 625-4778

## GAS VOLUME REPORT

McCoy Petr. Corp. OPERATOR

Steering #5

MTPRC 'A' # 3-27

8/20/14

WELL NAME AND NO.

DST NO. 1

IF: 1 <sup>st</sup> Flow				FF: 2 <sup>nd</sup> Flow (90mins) MERLA GAUGE				
Min.	Ins. of Water PSIG	Orifice Size	CFID	Min.	Ins. of Water PSIG	Orifice Size	mCFD	Atm's 2000
X				40	G.T.S.			
				50	2 <sup>#</sup> psi	1/4"	24.5	26.0
				60	2 1/2 <sup>#</sup> psi	1/4"	25.2	26.8
				70	3 <sup>#</sup> psi	1/4"	25.9	27.6
				80	3 <sup>#</sup> psi	1/4"	25.9	27.6
				90	3 <sup>#</sup> psi	1/4"	25.9	27.6

\* Remarks:

Didn't carry 15<sup>#</sup> psi.

*Matthew J. Smith*





# TRILOBITE TESTING INC.

1515 Commerce Parkway • Hays, Kansas 67601

## Test Ticket

NO. 54134

Well Name & No. MTPRC 'A' # 3-27 Test No. 2 Date 8/20/14  
 Company McCoy Petroleum Corporation Elevation 2251 KB 2238 GL  
 Address 9342 E Central Wichita, KS. 67206  
 Co. Rep / Geo. Zach Wroble Rig Skelling Delg Rig # 5  
 Location: Sec. 27 Twp. 30s Rge. 19w Co. Krowa State KS.

Interval Tested 5131 - 5146 Zone Tested Mississippi  
 Anchor Length 15' Drill Pipe Run 4,809' Mud Wt. 9.3  
 Top Packer Depth 5126 Drill Collars Run 300 Vis 53  
 Bottom Packer Depth 5131 Wt. Pipe Run Q WL 9.2  
 Total Depth 5146 Chlorides 8,000 ppm System LCM 4<sup>th</sup>

Blow Description IF! Weak blow. Surfs, ~ 1/4".  
ISI: No blow.  
FF: No blow.  
FSI: No blow.

Rec	Feet of	%gas	%oil	%water	%mud
<u>10</u>	<u>Delg mud</u>				<u>100%</u>
Rec	Feet of	%gas	%oil	%water	%mud
Rec	Feet of	%gas	%oil	%water	%mud
Rec	Feet of	%gas	%oil	%water	%mud
Rec	Feet of	%gas	%oil	%water	%mud

Rec Total 10' BHT 118° Gravity N.A. API RW N.C @ — °F Chlorides 8,000 ppm

(A) Initial Hydrostatic <u>2645</u>	<input checked="" type="checkbox"/> Test <u>1350</u>	T-On Location <u>2339</u>
(B) First Initial Flow <u>15</u>	<input checked="" type="checkbox"/> Jars <u>250</u>	T-Started <u>0006</u>
(C) First Final Flow <u>16</u>	<input checked="" type="checkbox"/> Safety Joint <u>75</u>	T-Open <u>0310</u>
(D) Initial Shut-In <u>1359</u>	<input type="checkbox"/> Circ Sub	T-Pulled <u>0620</u>
(E) Second Initial Flow <u>18</u>	<input type="checkbox"/> Hourly Standby	T-Out <u>0843</u>
(F) Second Final Flow <u>25</u>	<input checked="" type="checkbox"/> Mileage <u>1034</u> → <u>159.65</u>	Comments
(G) Final Shut-In <u>948</u>	<input type="checkbox"/> Sampler	
(H) Final Hydrostatic <u>2478</u>	<input type="checkbox"/> Straddle	<input type="checkbox"/> Ruined Shale Packer

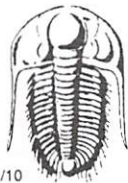
Initial Open 5  
 Initial Shut-In 60  
 Final Flow 60  
 Final Shut-In 60

Shale Packer  
 Extra Packer  
 Extra Recorder  
 Day Standby  
 Accessibility

Sub Total 1834.65  
 Total 1834.65  
 MP/DST Disc't

Approved By \_\_\_\_\_ Our Representative [Signature]

Trilobite Testing Inc. shall not be liable for damaged of any kind of the property or personnel of the one for whom a test is made, or for any loss suffered or sustained, directly or indirectly, through the use of its equipment, or its statements or opinion concerning the results of any test, tools lost or damaged in the hole shall be paid for at cost by the party for whom the test is made.



# TRILOBITE TESTING INC.

1515 Commerce Parkway • Hays, Kansas 67601

## Test Ticket

NO. 54135

4/10

Well Name & No.	MTPRC 'A' # 3-27		Test No.	—		Date	8/20/14	
Company	McCoy Petroleum Corporation		Elevation	2251		KB	2238 GL	
Address	9342 E Central WICHITA, KS. 67206							
Co. Rep / Geo.	Zack Wiele		Rig	Sterling Rig #5				
Location: Sec.	27	Twp.	30 S	Rge.	19 W	Co.	KOWA State KS.	

Interval Tested	Zone Tested		
Anchor Length	Drill Pipe Run	Mud Wt.	
Top Packer Depth	Drill Collars Run	Vis	
Bottom Packer Depth	Wt. Pipe Run	WL	
Total Depth	Chlorides	ppm System	LCM
Blow Description			

Rec	Feet of	%gas	%oil	%water	%mud

Rec Total	BHT	Gravity	API RW	@	° F	Chlorides	ppm
(A) Initial Hydrostatic	<input type="checkbox"/>	Test	T-On Location				
(B) First Initial Flow	<input type="checkbox"/>	Jars	T-Started				
(C) First Final Flow	<input type="checkbox"/>	Safety Joint	T-Open				
(D) Initial Shut-In	<input type="checkbox"/>	Circ Sub	T-Pulled				
(E) Second Initial Flow	<input type="checkbox"/>	Hourly Standby	T-Out				
(F) Second Final Flow	<input checked="" type="checkbox"/>	Mileage	1030 →		Comments * adjusted KB + GL		
(G) Final Shut-In	<input type="checkbox"/>	Sampler	159.65		on this test they had wrong #5 in dog house		
(H) Final Hydrostatic	<input type="checkbox"/>	Straddle			<input type="checkbox"/> Ruined Shale Packer		
Initial Open	<input type="checkbox"/>	Shale Packer			<input type="checkbox"/> Ruined Packer		
Initial Shut-In	<input type="checkbox"/>	Extra Packer			<input type="checkbox"/> Extra Copies		
Final Flow	<input type="checkbox"/>	Extra Recorder			Sub Total 0		
Final Shut-In	<input type="checkbox"/>	Day Standby			Total 159.65		
	<input type="checkbox"/>	Accessibility			MP/DST Disc't		
		Sub Total	159.65				

Approved By \_\_\_\_\_

Our Representative Matthew A. Smith

Trilobite Testing Inc. shall not be liable for damaged of any kind of the property or personnel of the one for whom a test is made, or for any loss suffered or sustained, directly or indirectly, through the use of its equipment, or its statements or opinion concerning the results of any test, tools lost or damaged in the hole shall be paid for at cost by the party for whom the test is made.