



## DRILL STEM TEST REPORT

Prepared For: **Carmen Schmitt Inc**

PO Box 47  
Great Bend, KS 67530-0047

ATTN: Brad Rine

### **Dible #1-8**

### **8-7s-31w Thomas,KS**

Start Date: 2014.11.05 @ 04:50:32

End Date: 2014.11.05 @ 10:30:47

Job Ticket #: 59702                      DST #: 1

Trilobite Testing, Inc  
1515 Commerce Parkway Hays, KS 67601  
ph: 785-625-4778 fax: 785-625-5620

Printed: 2014.11.08 @ 10:48:12



**TRILOBITE  
TESTING, INC**

# DRILL STEM TEST REPORT

Carmen Schmitt Inc  
 PO Box 47  
 Great Bend, KS 67530-0047  
 ATTN: Brad Rine

**8-7s-31w Thomas,KS**  
**Dible #1-8**  
 Job Ticket: 59702      **DST#: 1**  
 Test Start: 2014.11.05 @ 04:50:32

## GENERAL INFORMATION:

Formation: **Ft Scott, Cherokee L**  
 Deviated: No Whipstock: ft (KB)  
 Time Tool Opened: 07:16:47  
 Time Test Ended: 10:30:47  
 Interval: **4387.00 ft (KB) To 4459.00 ft (KB) (TVD)**  
 Total Depth: 4459.00 ft (KB) (TVD)  
 Hole Diameter: 7.88 inches Hole Condition: Fair  
 Test Type: Conventional Bottom Hole (Initial)  
 Tester: Shane McBride  
 Unit No: 55  
 Reference Elevations: 2998.00 ft (KB)  
 2987.00 ft (CF)  
 KB to GR/CF: 11.00 ft

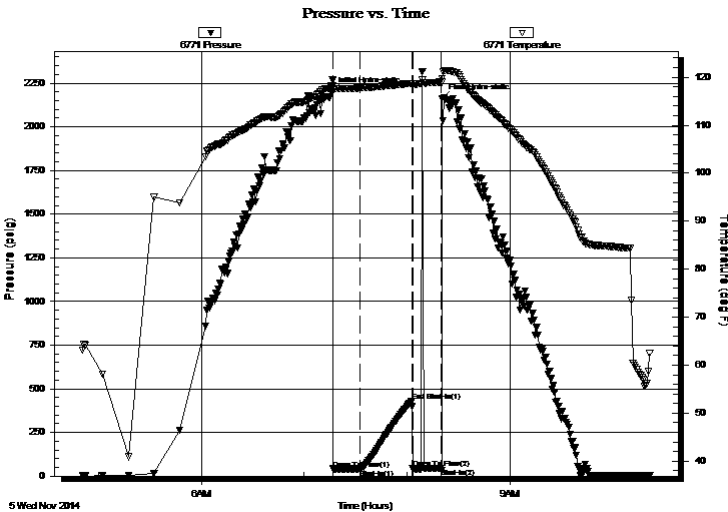
## Serial #: 6771

Inside

Press@RunDepth: 41.29 psig @ 4388.00 ft (KB) Capacity: 8000.00 psig  
 Start Date: 2014.11.05 End Date: 2014.11.05 Last Calib.: 2014.11.05  
 Start Time: 04:50:32 End Time: 10:21:47 Time On Btm: 2014.11.05 @ 07:16:02  
 Time Off Btm: 2014.11.05 @ 08:20:32

TEST COMMENT: Slid tool 8' to bottom 1 1/2" in blow, Bled off mud blow, No blow  
 No return  
 No blow, Flush tool after 5 min, good surge, No blow  
 pulled tool after 15 min on final flow

## PRESSURE SUMMARY



Time (Min.)	Pressure (psig)	Temp (deg F)	Annotation
0	2201.64	117.90	Initial Hydro-static
1	41.21	117.07	Open To Flow (1)
17	41.29	117.74	Shut-In(1)
47	431.14	118.72	End Shut-In(1)
48	42.33	118.58	Open To Flow (2)
64	45.00	118.99	Shut-In(2)
65	2161.19	119.78	Final Hydro-static

## Recovery

Length (ft)	Description	Volume (bbl)
10.00	mud 100% m	0.05

## Gas Rates

Choke (inches)	Pressure (psig)	Gas Rate (Mcf/d)





**TRILOBITE  
TESTING, INC**

# DRILL STEM TEST REPORT

**TOOL DIAGRAM**

Carmen Schmitt Inc

**8-7s-31w Thomas,KS**

PO Box 47  
Great Bend, KS 67530-0047

**Dible #1-8**

Job Ticket: 59702

**DST#: 1**

ATTN: Brad Rine

Test Start: 2014.11.05 @ 04:50:32

## Tool Information

Drill Pipe:	Length: 4137.00 ft	Diameter: 3.80 inches	Volume: 58.03 bbl	Tool Weight:	2500.00 lb
Heavy Wt. Pipe:	Length: 0.00 ft	Diameter: 0.00 inches	Volume: 0.00 bbl	Weight set on Packer:	25000.00 lb
Drill Collar:	Length: 234.00 ft	Diameter: 2.25 inches	Volume: 1.15 bbl	Weight to Pull Loose:	85000.00 lb
			<u>Total Volume: 59.18 bbl</u>	Tool Chased	0.00 ft
Drill Pipe Above KB:	12.00 ft			String Weight: Initial	68000.00 lb
Depth to Top Packer:	4387.00 ft			Final	68000.00 lb
Depth to Bottom Packer:	ft				
Interval between Packers:	72.00 ft				
Tool Length:	100.00 ft				
Number of Packers:	2	Diameter: 6.75 inches			

Tool Comments:

## Tool Description

Tool Description	Length (ft)	Serial No.	Position	Depth (ft)	Accum. Lengths
Change Over Sub	1.00			4360.00	
Shut In Tool	5.00			4365.00	
Hydraulic tool	5.00			4370.00	
Jars	5.00			4375.00	
Safety Joint	3.00			4378.00	
Packer	5.00			4383.00	28.00 Bottom Of Top Packer
Packer	4.00			4387.00	
Stubb	1.00			4388.00	
Recorder	0.00	6771	Inside	4388.00	
Recorder	0.00	8844	Outside	4388.00	
Perforations	32.00			4420.00	
Change Over Sub	1.00			4421.00	
Drill Pipe	32.00			4453.00	
Change Over Sub	1.00			4454.00	
Bullnose	5.00			4459.00	72.00 Bottom Packers & Anchor

**Total Tool Length: 100.00**



**TRILOBITE  
TESTING, INC**

# DRILL STEM TEST REPORT

**FLUID SUMMARY**

Carmen Schmitt Inc  
PO Box 47  
Great Bend, KS 67530-0047  
ATTN: Brad Rine

**8-7s-31w Thomas,KS**  
**Dible #1-8**  
Job Ticket: 59702      **DST#: 1**  
Test Start: 2014.11.05 @ 04:50:32

## Mud and Cushion Information

Mud Type: Gel Chem	Cushion Type:	Oil API:	0 deg API
Mud Weight: 9.00 lb/gal	Cushion Length: ft	Water Salinity:	0 ppm
Viscosity: 52.00 sec/qt	Cushion Volume: bbl		
Water Loss: 6.39 in <sup>3</sup>	Gas Cushion Type:		
Resistivity: 0.00 ohm.m	Gas Cushion Pressure: psig		
Salinity: 1500.00 ppm			
Filter Cake: 1.00 inches			

## Recovery Information

Recovery Table

Length ft	Description	Volume bbl
10.00	mud 100%m	0.049

Total Length: 10.00 ft      Total Volume: 0.049 bbl  
Num Fluid Samples: 0      Num Gas Bombs: 0      Serial #:  
Laboratory Name:      Laboratory Location:  
Recovery Comments:

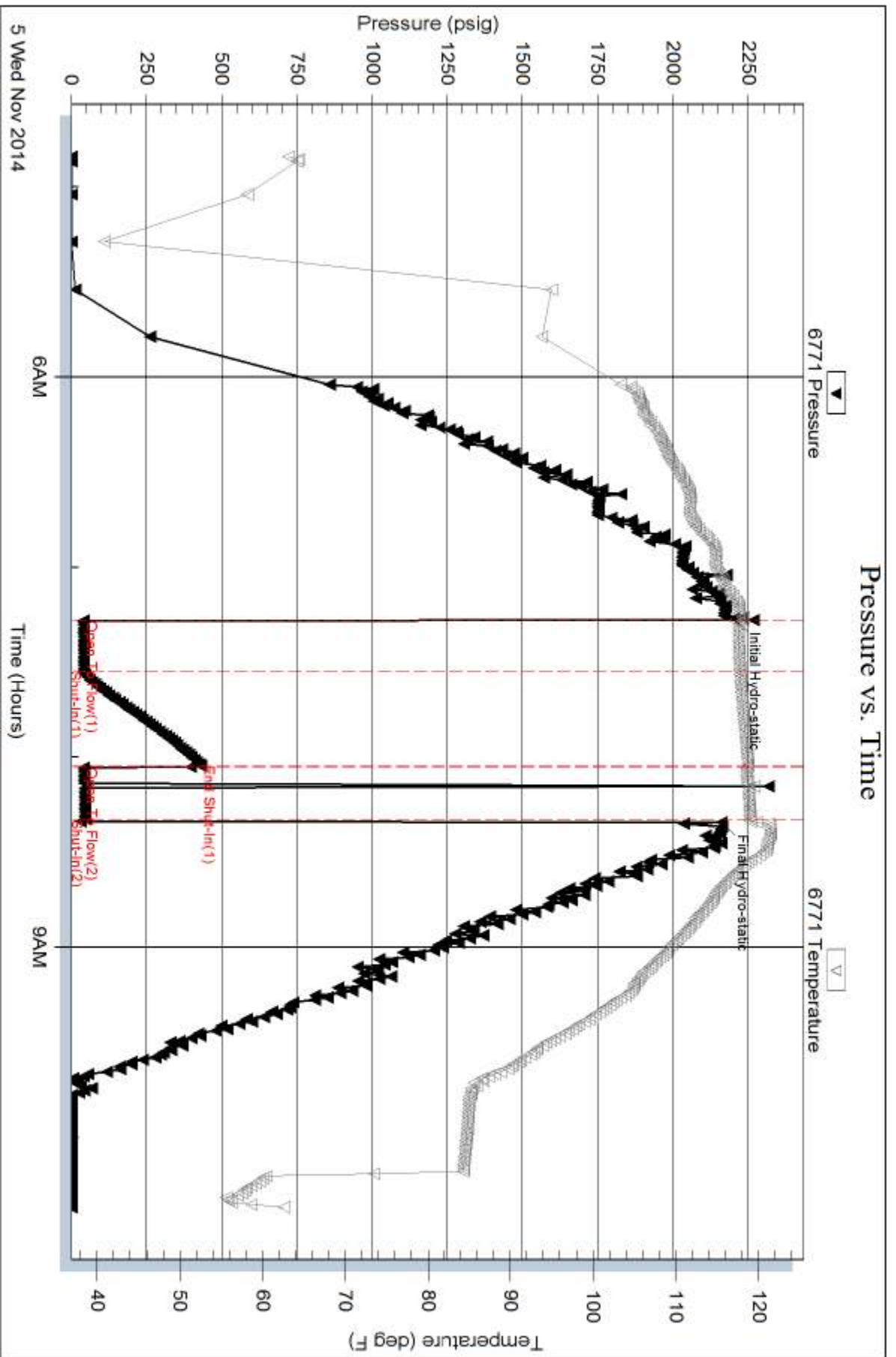
Serial #: 6771

Inside

Carmen Schmitt Inc

Dible #1-8

DST Test Number: 1

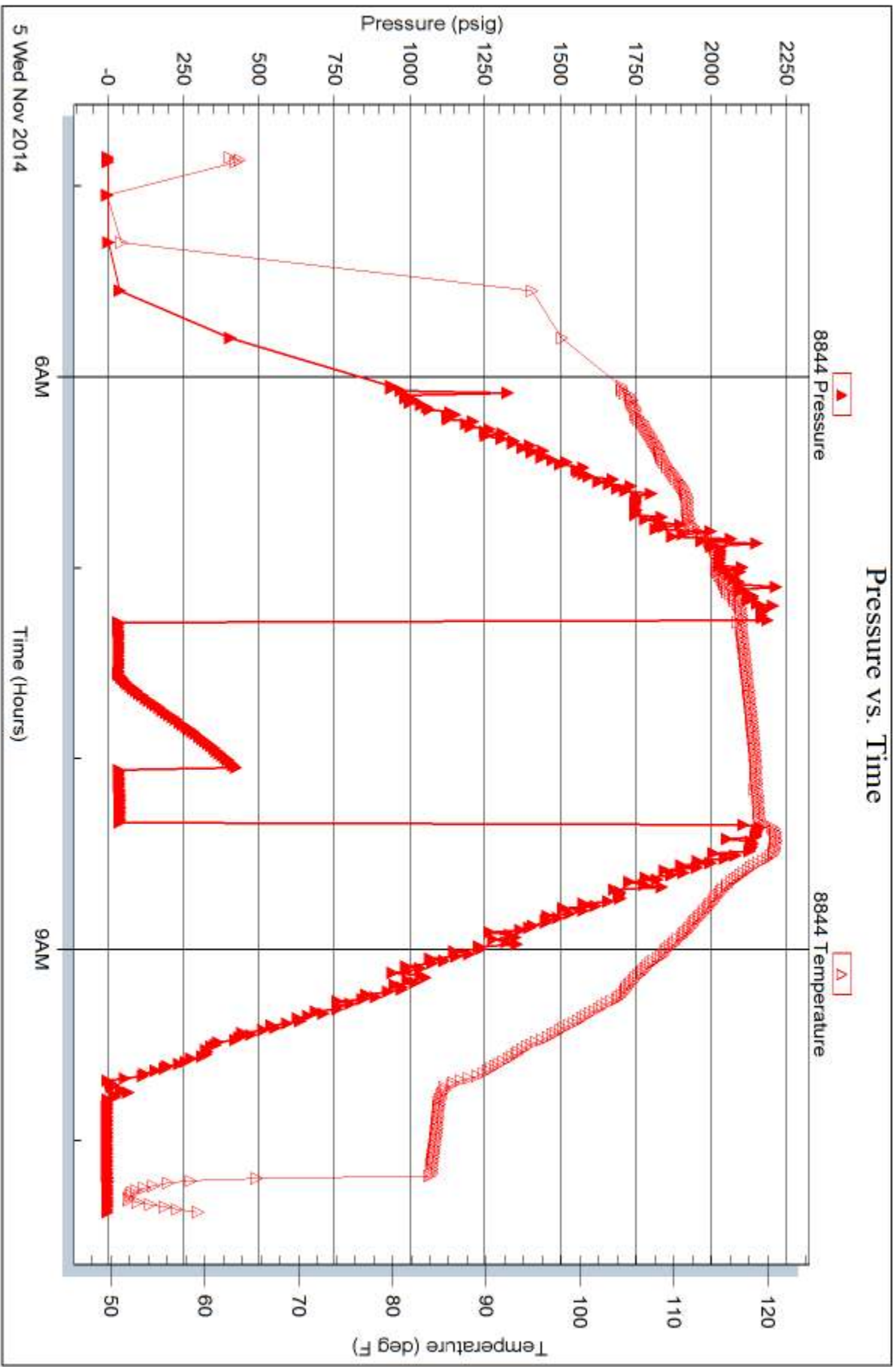


Serial #: 8844

Outside Carmen Schnitt Inc

Dible #1-8

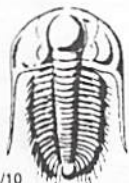
DST Test Number: 1



Triobite Testing, Inc

Ref. No: 59702

Printed: 2014.11.08 @ 10:48:14



# TRILOBITE TESTING INC.

1515 Commerce Parkway • Hays, Kansas 67601

## Test Ticket

NO. 59702

Well Name & No. Dible # 1-8 Test No. #1 Date 11/5/14  
 Company Carmen Schmitt Inc. Elevation 2998 KB 2987 GL  
 Address P.O. Box 47 Great Bend, Ks 67530-0047  
 Co. Rep / Geo. Brad Rine Rig Mud Log #22  
 Location: Sec. 8 Twp. 75 Rge. 3W Co. Thomas State Ks

Interval Tested 4387 4459 Zone Tested Ft. Scott, Cherokee ls  
 Anchor Length 72 Drill Pipe Run 4137 Mud Wt. 9.2  
 Top Packer Depth 4382 Drill Collars Run 234' Vis 52  
 Bottom Packer Depth 4387 Wt. Pipe Run --- WL 6.4  
 Total Depth 4459 Chlorides 1500 ppm System LCM #3

Blow Description Slide tool 8' to bottom 1 1/2" blow/Bled off mud blow, No blow, I.S.I.: No return  
F.F.: No blow, Flush Tool After 5min, good Surge, No blow  
E.S.I.: Pull Tool After 15min on Final Flow

Rec	Feet of	%gas	%oil	%water	%mud
<u>10'</u>	<u>mud</u>				<u>100%</u>
Rec	Feet of	%gas	%oil	%water	%mud
Rec	Feet of	%gas	%oil	%water	%mud
Rec	Feet of	%gas	%oil	%water	%mud
Rec	Feet of	%gas	%oil	%water	%mud

Rec Total 10' BHT 121° Gravity --- API RW --- @ --- F Chlorides --- ppm  
 (A) Initial Hydrostatic 2201  Test 1250 T-On Location 04:20  
 (B) First Initial Flow 41  Jars 250 T-Started 04:50  
 (C) First Final Flow 41  Safety Joint 75 T-Open 07:19  
 (D) Initial Shut-In 431  Circ Sub N/C T-Pulled 08:19  
 (E) Second Initial Flow 42  Hourly Standby T-Out 10:30  
 (F) Second Final Flow 45  Mileage 144 N 75rt 116.25 Comments  
 (G) Final Shut-In ---  Sampler  
 (H) Final Hydrostatic 2161  Straddle  Ruined Shale Packer  
 Shale Packer  Ruined Packer  
 Extra Packer  Extra Copies

Initial Open 15  
 Initial Shut-In 30  
 Final Flow 15  
 Final Shut-In ---  
 Sub Total 1691.25  
 Total 1691.25  
 MP/DST Disc't ---

Approved By Brad Rine Our Representative [Signature]

Trilobite Testing Inc. shall not be liable for damaged of any kind of the property or personnel of the one for whom a test is made, or for any loss suffered or sustained, directly or indirectly, through the use of its equipment, or its statements or opinion concerning the results of any test, tools lost or damaged in the hole shall be paid for at cost by the party for whom the test is made.





# TRILOBITE TESTING INC.

1515 Commerce Parkway • Hays, Kansas 67601

## Test Ticket

NO. 59703

4/10

Well Name & No. Dible #18 Test No. \_\_\_\_\_ Date 11/6/14  
 Company Carmen Schutte Inc Elevation \_\_\_\_\_ KB \_\_\_\_\_ GL \_\_\_\_\_  
 Address P.O. Box 47 Great Bend KS 67530-0047  
 Co. Rep / Geo. \_\_\_\_\_ Rig \_\_\_\_\_  
 Location: Sec. \_\_\_\_\_ Twp. \_\_\_\_\_ Rge. \_\_\_\_\_ Co. \_\_\_\_\_ State \_\_\_\_\_

Interval Tested \_\_\_\_\_ Zone Tested \_\_\_\_\_  
 Anchor Length \_\_\_\_\_ Drill Pipe Run \_\_\_\_\_ Mud Wt. \_\_\_\_\_  
 Top Packer Depth \_\_\_\_\_ Drill Collars Run \_\_\_\_\_ Vis \_\_\_\_\_  
 Bottom Packer Depth \_\_\_\_\_ Wt. Pipe Run \_\_\_\_\_ WL \_\_\_\_\_  
 Total Depth \_\_\_\_\_ Chlorides \_\_\_\_\_ ppm System \_\_\_\_\_ LCM \_\_\_\_\_

Blow Description Geo Called @ 10:00 am. Released me to pickup tools finished last test @ 10:30 am. on the 11/5/14

Rec	Feet of	%gas	%oil	%water	%mud
Rec	Feet of	%gas	%oil	%water	%mud
Rec	Feet of	%gas	%oil	%water	%mud
Rec	Feet of	%gas	%oil	%water	%mud
Rec	Feet of	%gas	%oil	%water	%mud

Rec Total \_\_\_\_\_ BHT \_\_\_\_\_ Gravity \_\_\_\_\_ API RW \_\_\_\_\_ @ \_\_\_\_\_ °F Chlorides \_\_\_\_\_ ppm

(A) Initial Hydrostatic \_\_\_\_\_  Test \_\_\_\_\_ T-On Location \_\_\_\_\_  
 (B) First Initial Flow \_\_\_\_\_  Jars \_\_\_\_\_ T-Started \_\_\_\_\_  
 (C) First Final Flow \_\_\_\_\_  Safety Joint \_\_\_\_\_ T-Open \_\_\_\_\_  
 (D) Initial Shut-In \_\_\_\_\_  Circ Sub \_\_\_\_\_ T-Pulled \_\_\_\_\_  
 (E) Second Initial Flow \_\_\_\_\_  Hourly Standby \_\_\_\_\_ T-Out \_\_\_\_\_  
 (F) Second Final Flow \_\_\_\_\_  Mileage 144 RT 116.25 Comments \_\_\_\_\_  
 (G) Final Shut-In \_\_\_\_\_  Sampler \_\_\_\_\_  
 (H) Final Hydrostatic \_\_\_\_\_  Straddle \_\_\_\_\_  Ruined Shale Packer \_\_\_\_\_  
 Shale Packer \_\_\_\_\_  Ruined Packer \_\_\_\_\_

Initial Open \_\_\_\_\_  Extra Packer \_\_\_\_\_  Extra Copies \_\_\_\_\_  
 Initial Shut-In \_\_\_\_\_  Extra Recorder \_\_\_\_\_ Sub Total 0  
 Final Flow \_\_\_\_\_  Day Standby \_\_\_\_\_ Total 116.25  
 Final Shut-In \_\_\_\_\_  Accessibility \_\_\_\_\_ MP/DST Disc't \_\_\_\_\_  
 Sub Total 116.25

Approved By \_\_\_\_\_ Our Representative [Signature]  
 Trilobite Testing Inc. shall not be liable for damaged of any kind of the property or personnel of the one for whom a test is made, or for any loss suffered or sustained, directly or indirectly, through the use of its equipment, or its statements or opinion concerning the results of any test, tools lost or damaged in the hole shall be paid for at cost by the party for whom the test is made.