



TRILOBITE TESTING, INC.

DRILL STEM TEST REPORT

Vincent Oil Corporation

8-28S-23W Ford

155 N Market Ste 700
Wichita, KS 67202

Zimmerman 2-8

ATTN: Tom Dudgeon

Job Ticket: 51817

DST#: 3

Test Start: 2014.07.29 @ 23:28:19

GENERAL INFORMATION:

Formation: **Mississippi**

Deviated: No Whipstock: ft (KB)

Time Tool Opened: 02:32:49

Time Test Ended: 09:23:49

Test Type: Conventional Bottom Hole (Reset)

Tester: Leal Cason

Unit No: 74

Interval: 5099.00 ft (KB) To 5111.00 ft (KB) (TVD)

Reference Elevations: 2493.00 ft (KB)

Total Depth: 5111.00 ft (KB) (TVD)

2482.00 ft (CF)

Hole Diameter: 7.88 inches Hole Condition: Good

KB to GR/CF: 11.00 ft

Serial #: 6798

Inside

Press@RunDepth: 169.86 psig @ 5100.00 ft (KB)

Capacity: 8000.00 psig

Start Date: 2014.07.29

End Date:

2014.07.30

Last Calib.:

2014.07.30

Start Time: 23:28:20

End Time:

09:23:49

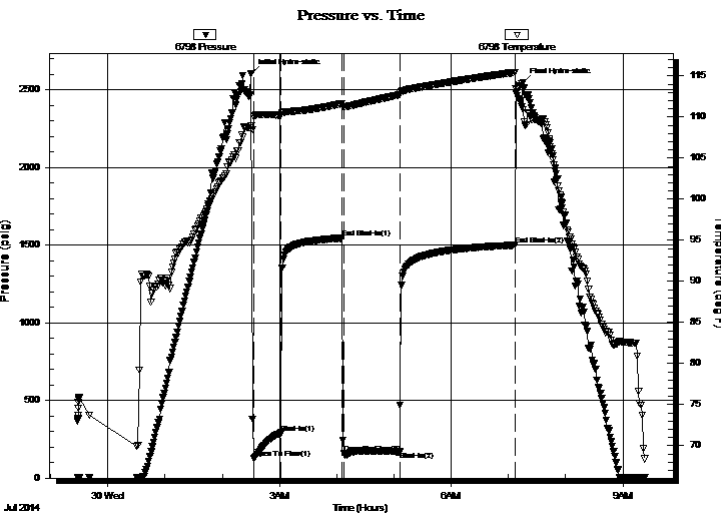
Time On Btm:

2014.07.30 @ 02:30:19

Time Off Btm:

2014.07.30 @ 07:15:19

TEST COMMENT: IF: Strong Blow , BOB in 10 seconds, GTS in 6 minutes, Gauged & Caught Sample
IS: Would Not Bleed Off
FF: Strong Blow , BOB & GTS immediate, Gauged Gas
FSI: No Blow Back



PRESSURE SUMMARY

Time (Min.)	Pressure (psig)	Temp (deg F)	Annotation
0	2605.86	108.95	Initial Hydro-static
3	128.53	110.05	Open To Flow (1)
32	291.38	110.24	Shut-In(1)
96	1545.25	111.65	End Shut-In(1)
98	158.00	111.29	Open To Flow (2)
156	169.86	112.71	Shut-In(2)
277	1499.61	115.44	End Shut-In(2)
285	2546.58	110.95	Final Hydro-static

Recovery

Length (ft)	Description	Volume (bbl)
0.00	GTS	0.00
30.00	GCM 5%G 95%M	0.42

* Recovery from multiple tests

Gas Rates

	Choke (inches)	Pressure (psig)	Gas Rate (Mcf/d)
First Gas Rate	0.25	100.00	181.49
Last Gas Rate	0.50	66.00	542.35
Max. Gas Rate	0.25	200.00	340.13



**TRILOBITE
TESTING, INC**

DRILL STEM TEST REPORT

FLUID SUMMARY

Vincent Oil Corporation

8-28S-23W Ford

155 N Market Ste 700
Wichita, KS 67202

Zimmerman 2-8

Job Ticket: 51817

DST#: 3

ATTN: Tom Dudgeon

Test Start: 2014.07.29 @ 23:28:19

Mud and Cushion Information

Mud Type: Gel Chem

Cushion Type:

Oil API:

deg API

Mud Weight: 9.00 lb/gal

Cushion Length:

ft

Water Salinity:

ppm

Viscosity: 50.00 sec/qt

Cushion Volume:

bbbl

Water Loss: 8.78 in³

Gas Cushion Type:

Resistivity: ohm.m

Gas Cushion Pressure:

psig

Salinity: 7000.00 ppm

Filter Cake: 0.02 inches

Recovery Information

Recovery Table

Length ft	Description	Volume bbl
0.00	GTS	0.000
30.00	GCM 5%G 95%M	0.421

Total Length: 30.00 ft Total Volume: 0.421 bbl

Num Fluid Samples: 0

Num Gas Bombs: 0

Serial #:

Laboratory Name:

Laboratory Location:

Recovery Comments:



**TRILOBITE
TESTING, INC.**

DRILL STEM TEST REPORT

GAS RATES

Vincent Oil Corporation

8-28S-23W Ford

155 N Market Ste 700
Wichita, KS 67202

Zimmerman 2-8

Job Ticket: 51817

DST#: 3

ATTN: Tom Dudgeon

Test Start: 2014.07.29 @ 23:28:19

Gas Rates Information

Temperature: 59 (deg F)
Relative Density: 0.65
Z Factor: 0.8

Gas Rates Table

Flow Period	Elapsed Time	Choke (inches)	Pressure (psig)	Gas Rate (Mcf/d)
1	10	0.25	100.00	181.49
1	20	0.25	175.00	300.46
1	30	0.25	200.00	340.13
2	10	0.50	58.00	488.39
2	20	0.50	66.00	542.35
2	30	0.50	68.00	555.85
2	40	0.50	66.00	542.35
2	50	0.50	66.00	542.35
2	60	0.50	66.00	542.35

