



DRILL STEM TEST REPORT

Prepared For: **McCoy Petro. Corp.**

9342 E. Central
Wichita, KS 67206-2573

ATTN: Evan Stone

Yohn 'A' #2-26

26-30s-19w Kiowa,KS

Start Date: 2014.09.17 @ 13:49:42

End Date: 2014.09.17 @ 23:07:42

Job Ticket #: 59909 DST #: 1

Trilobite Testing, Inc
1515 Commerce Parkway Hays, KS 67601
ph: 785-625-4778 fax: 785-625-5620

Printed: 2014.09.19 @ 08:40:11



TRILOBITE TESTING, INC

DRILL STEM TEST REPORT

McCoy Petro. Corp.
 9342 E. Central
 Wichita, KS 67206-2573
 ATTN: Evan Stone

26-30s-19w Kiowa,KS
Yohn 'A' #2-26
 Job Ticket: 59909 **DST#: 1**
 Test Start: 2014.09.17 @ 13:49:42

GENERAL INFORMATION:

Formation: **Miss.**
 Deviated: No Whipstock: ft (KB)
 Time Tool Opened: 16:08:12
 Time Test Ended: 23:07:42
 Interval: **5075.00 ft (KB) To 5125.00 ft (KB) (TVD)**
 Total Depth: 5125.00 ft (KB) (TVD)
 Hole Diameter: 7.88 inches Hole Condition: Fair
 Test Type: Conventional Bottom Hole (Initial)
 Tester: Ryan Reynolds
 Unit No: 68
 Reference Elevations: 2235.00 ft (KB)
 2226.00 ft (CF)
 KB to GR/CF: 9.00 ft

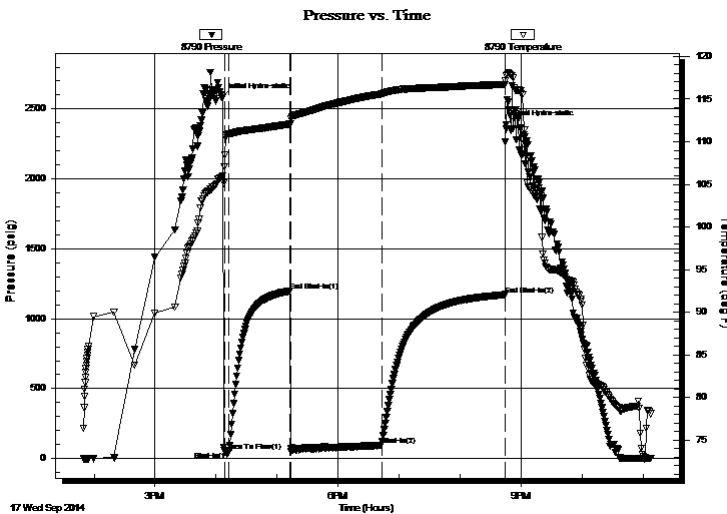
Serial #: 8790

Inside

Press@RunDepth: 93.60 psig @ 5082.00 ft (KB) Capacity: 8000.00 psig
 Start Date: 2014.09.17 End Date: 2014.09.17 Last Calib.: 2014.09.17
 Start Time: 13:49:47 End Time: 23:07:42 Time On Btm: 2014.09.17 @ 16:05:27
 Time Off Btm: 2014.09.17 @ 20:45:12

TEST COMMENT: 5 IF: Strong blow . BOB @ 1min.
 60 ISI: No blow
 90 FF: Strong blow . BOB immed. GTS @ 45min. TSTM.
 120 FSI: Weak BB. 1/2" - dead @ 75min.

PRESSURE SUMMARY



Time (Min.)	Pressure (psig)	Temp (deg F)	Annotation
0	2583.34	105.89	Initial Hydro-static
3	54.95	107.09	Open To Flow (1)
8	50.25	110.92	Shut-In(1)
68	1198.15	112.08	End Shut-In(1)
69	53.36	112.73	Open To Flow (2)
158	93.60	115.60	Shut-In(2)
279	1172.20	116.73	End Shut-In(2)
280	2389.20	117.77	Final Hydro-static

Recovery

Length (ft)	Description	Volume (bbl)
60.00	OWGCM 5%o, 8%w, 17%g, 70%m	0.30
175.00	VSLI OWGCM trc%o, 1%w, 9%g, 90%m	1.02

Gas Rates

	Choke (inches)	Pressure (psig)	Gas Rate (Mcf/d)



TRILOBITE TESTING, INC.

DRILL STEM TEST REPORT

McCoy Petro. Corp.

26-30s-19w Kiowa,KS

9342 E. Central
Wichita, KS 67206-2573

Yohn 'A' #2-26

Job Ticket: 59909

DST#: 1

ATTN: Evan Stone

Test Start: 2014.09.17 @ 13:49:42

GENERAL INFORMATION:

Formation: **Miss.**

Deviated: No Whipstock: ft (KB)

Time Tool Opened: 16:08:12

Time Test Ended: 23:07:42

Test Type: Conventional Bottom Hole (Initial)

Tester: Ryan Reynolds

Unit No: 68

Interval: 5075.00 ft (KB) To 5125.00 ft (KB) (TVD)

Reference Elevations: 2235.00 ft (KB)

Total Depth: 5125.00 ft (KB) (TVD)

2226.00 ft (CF)

Hole Diameter: 7.88 inches Hole Condition: Fair

KB to GR/CF: 9.00 ft

Serial #: 8792 Outside

Press@RunDepth: psig @ 5082.00 ft (KB)

Capacity: 8000.00 psig

Start Date: 2014.09.17 End Date: 2014.09.17

Last Calib.: 2014.09.17

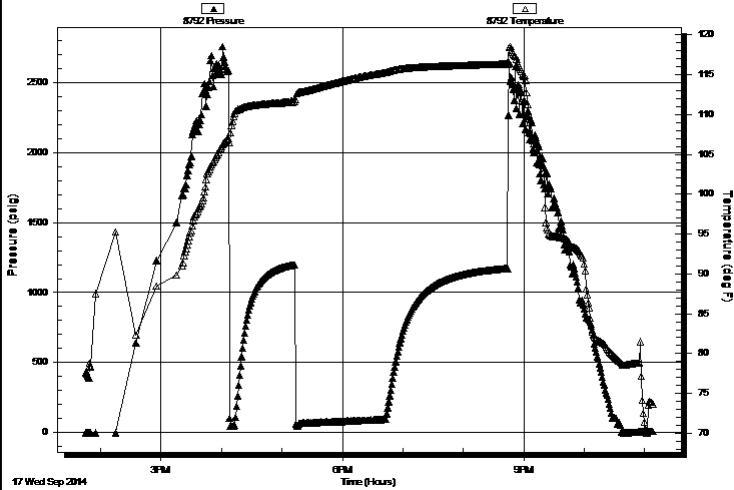
Start Time: 13:45:08 End Time: 23:08:18

Time On Btm:

Time Off Btm:

TEST COMMENT: 5 IF: Strong blow . BOB @ 1min.
60 ISI: No blow
90 FF: Strong blow . BOB immed. GTS @ 45min. TSTM.
120 FSI: Weak BB. 1/2" - dead @ 75min.

Pressure vs. Time



PRESSURE SUMMARY

Time (Min.)	Pressure (psig)	Temp (deg F)	Annotation

Recovery

Length (ft)	Description	Volume (bbl)
60.00	OWGCM 5%o, 8%w, 17%g, 70%m	0.30
175.00	VSLI OWGCM trc%o, 1%w, 9%g, 90%m	1.02

Gas Rates

Choke (inches)	Pressure (psig)	Gas Rate (Mcf/d)



**TRILOBITE
TESTING, INC**

DRILL STEM TEST REPORT

TOOL DIAGRAM

McCoy Petro. Corp.

26-30s-19w Kiowa,KS

9342 E. Central
Wichita, KS 67206-2573

Yohn 'A' #2-26

Job Ticket: 59909

DST#: 1

ATTN: Evan Stone

Test Start: 2014.09.17 @ 13:49:42

Tool Information

Drill Pipe:	Length: 4843.00 ft	Diameter: 3.80 inches	Volume: 67.93 bbl	Tool Weight: 2400.00 lb
Heavy Wt. Pipe:	Length: 0.00 ft	Diameter: inches	Volume: 0.00 bbl	Weight set on Packer: 20000.00 lb
Drill Collar:	Length: 218.00 ft	Diameter: 2.25 inches	Volume: 1.07 bbl	Weight to Pull Loose: 125000.0 lb
			<u>Total Volume: 69.00 bbl</u>	Tool Chased 0.00 ft
Drill Pipe Above KB:	13.00 ft			String Weight: Initial 80000.00 lb
Depth to Top Packer:	5075.00 ft			Final 88000.00 lb
Depth to Bottom Packer:	ft			
Interval between Packers:	50.00 ft			
Tool Length:	77.00 ft			
Number of Packers:	2	Diameter: 6.75 inches		

Tool Comments:

Tool Description

Tool Description	Length (ft)	Serial No.	Position	Depth (ft)	Accum. Lengths
Change Over Sub	1.00			5049.00	
Shut In Tool	5.00			5054.00	
Hydraulic tool	5.00			5059.00	
Jars	5.00			5064.00	
Safety Joint	2.00			5066.00	
Packer	5.00			5071.00	27.00 Bottom Of Top Packer
Packer	4.00			5075.00	
Stubb	1.00			5076.00	
Perforations	5.00			5081.00	
Change Over Sub	1.00			5082.00	
Recorder	0.00	8790	Inside	5082.00	
Recorder	0.00	8792	Outside	5082.00	
Drill Pipe	32.00			5114.00	
Change Over Sub	1.00			5115.00	
Perforations	7.00			5122.00	
Bullnose	3.00			5125.00	50.00 Bottom Packers & Anchor
Total Tool Length:	77.00				



**TRILOBITE
TESTING, INC**

DRILL STEM TEST REPORT

FLUID SUMMARY

McCoy Petro. Corp.

26-30s-19w Kiowa,KS

9342 E. Central
Wichita, KS 67206-2573

Yohn 'A' #2-26

Job Ticket: 59909

DST#: 1

ATTN: Evan Stone

Test Start: 2014.09.17 @ 13:49:42

Mud and Cushion Information

Mud Type: Gel Chem

Cushion Type:

Oil API:

deg API

Mud Weight: 9.00 lb/gal

Cushion Length:

ft

Water Salinity:

96000 ppm

Viscosity: 51.00 sec/qt

Cushion Volume:

bbf

Water Loss: 11.18 in³

Gas Cushion Type:

Resistivity: ohm.m

Gas Cushion Pressure:

psig

Salinity: 9500.00 ppm

Filter Cake: 0.04 inches

Recovery Information

Recovery Table

Length ft	Description	Volume bbf
60.00	OWGCM 5%o, 8%w, 17%g, 70%m	0.295
175.00	VSLI OWGCM trc%o, 1%w, 9%g, 90%m	1.015

Total Length: 235.00 ft

Total Volume: 1.310 bbf

Num Fluid Samples: 0

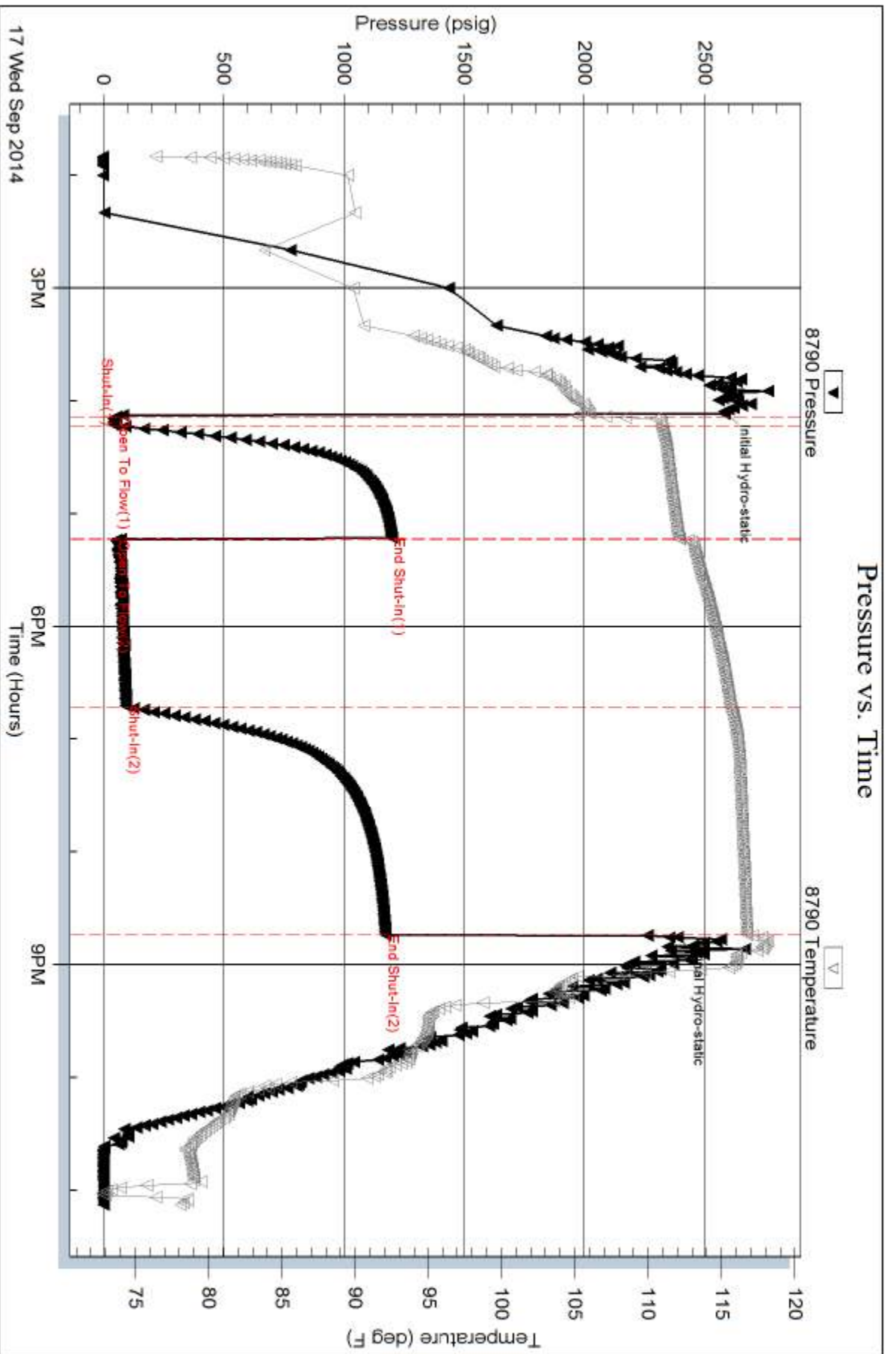
Num Gas Bombs: 0

Serial #: none

Laboratory Name:

Laboratory Location:

Recovery Comments:

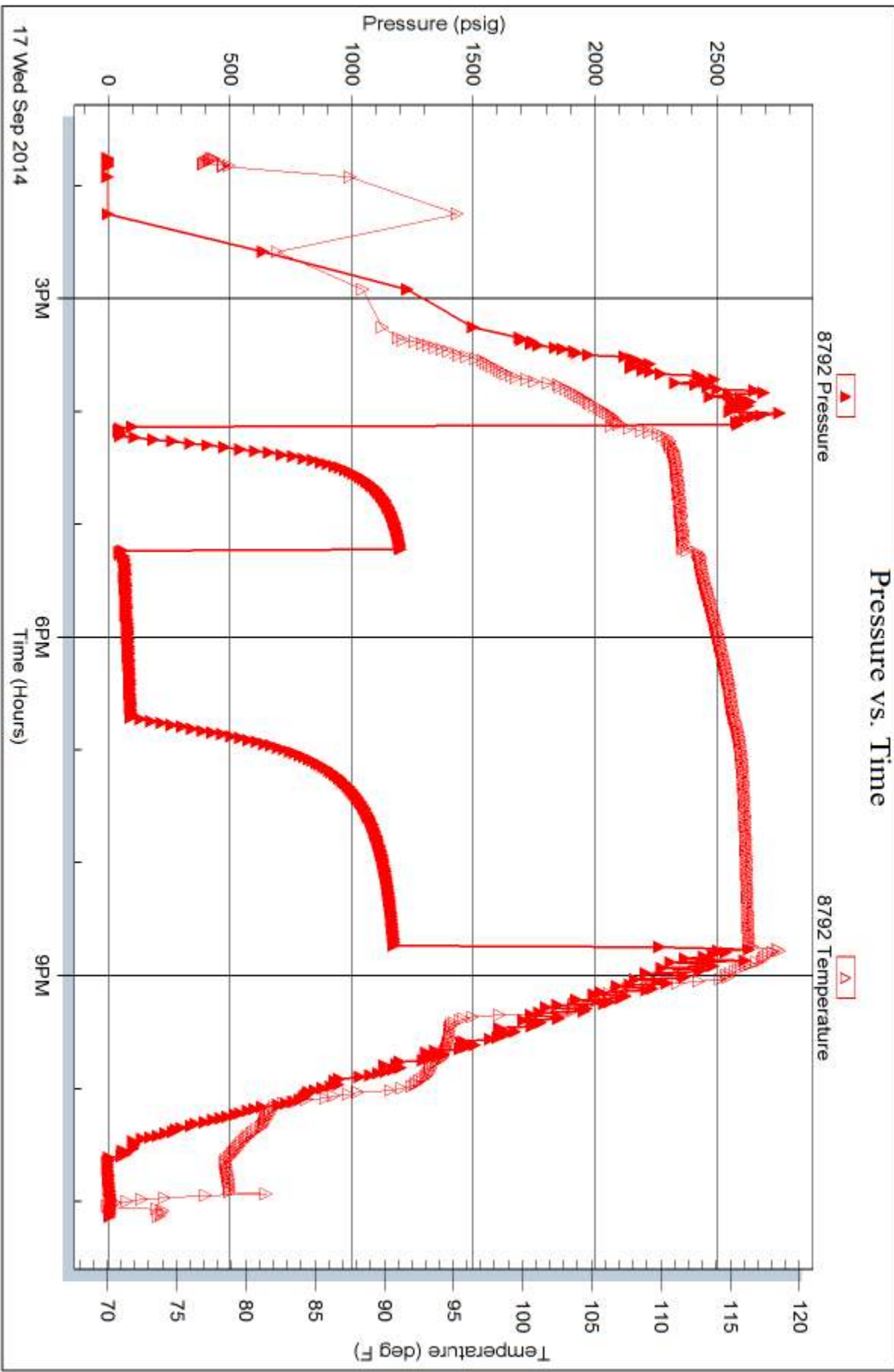


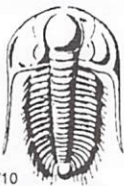
Serial #: 8792

Outside McCoy Petro. Corp.

Yohn 'A' #2-26

DST Test Number: 1





TRILOBITE TESTING INC.

1515 Commerce Parkway • Hays, Kansas 67601

Test Ticket

NO. 59909

4/10

Well Name & No. Yohn "A" 2-26 Test No. 1 Date 9-17-14
 Company McCoy Petro. Corp. Elevation 2235 KB 2226 GL
 Address 9342 E. Central Wichita, KS 67206-2573
 Co. Rep / Geo. Evan Stone Rig SDC#4
 Location: Sec. 26 Twp. 30s Rge. 19w Co. Kiowa State KS

Interval Tested 5075-5125 Zone Tested Miss.
 Anchor Length 50 Drill Pipe Run 4843 Mud Wt. 9.4
 Top Packer Depth 5070 Drill Collars Run 218 Vis 51
 Bottom Packer Depth 5075 Wt. Pipe Run Ø WL 11.2
 Total Depth 5125 Chlorides 9500 ppm System LCM 4#

Blow Description IF: Strong blow. BOB @ 1 min. JST: No blow
FF: Strong blow. BOB immed. GTS @ 45 min. JSTM
FST: Weak BB. 1/2" - Dead @ 75 min.

Rec	Feet of	%gas	%oil	%water	%mud
<u>175</u>	<u>VSLI OGM</u>	<u>9</u>	<u>Tr</u>	<u>1</u>	<u>90</u>
<u>60</u>	<u>OWGM</u>	<u>17</u>	<u>5</u>	<u>8</u>	<u>70</u>
Rec	Feet of	%gas	%oil	%water	%mud
Rec	Feet of	%gas	%oil	%water	%mud

Rec Total 235 BHT 117 Gravity N/C API RW 0.65 @ 85 °F Chlorides 9600 ppm
 (A) Initial Hydrostatic 2583 Test 1350 T-On Location 1300
 (B) First Initial Flow 55 Jars 250 T-Started 1349
 (C) First Final Flow 50 Safety Joint 75 T-Open 1608
 (D) Initial Shut-In 1198 Circ Sub _____ T-Pulled 2043
 (E) Second Initial Flow 53 Hourly Standby _____ T-Out 2308
 (F) Second Final Flow 94 Mileage 116 179.80 Comments _____
 (G) Final Shut-In 1172 Sampler _____
 (H) Final Hydrostatic 2389 Straddle _____
 Ruined Shale Packer _____

Initial Open 5 Shale Packer _____
 Initial Shut-In 60 Extra Packer _____
 Final Flow 90 Extra Recorder _____
 Final Shut-In 120 Day Standby _____
 Sub Total 1854.80 Accessibility _____
 Total 1854.80 Ruined Packer _____
 MP/DST Disc't _____ Extra Copies _____
 Sub Total 1854.80 Ruined Packer _____

Approved By [Signature] Our Representative Ryan Reynolds
 Trilobite Testing Inc. shall not be liable for damaged of any kind of the property or personnel of the one for whom a test is made, or for any loss suffered or sustained, directly or indirectly, through the use of its equipment, or its statements or opinion concerning the results of any test, tools lost or damaged in the hole shall be paid for at cost by the party for whom the test is made.