



**TRILOBITE  
TESTING, INC**

# DRILL STEM TEST REPORT

Sam Gary Jr. Associates Inc

**1-4S-36W Rawlins KS**

1515 Wynkoop STE 700  
Denver Co 80202

**Fisher Cattle Co#1-1**

Job Ticket: 58291

**DST#: 1**

ATTN: Clayton Camozzi

Test Start: 2014.08.09 @ 20:26:00

## GENERAL INFORMATION:

Formation: **LKC "B - D"**

Deviated: No Whipstock: ft (KB)

Time Tool Opened: 23:38:30

Time Test Ended: 05:55:40

Test Type: Conventional Bottom Hole (Initial)

Tester: Ryan Nichols

Unit No: 78

**Interval: 4196.00 ft (KB) To 4250.00 ft (KB) (TVD)**

Reference Elevations: 3267.00 ft (KB)

Total Depth: 4250.00 ft (KB) (TVD)

3262.00 ft (CF)

Hole Diameter: 7.88 inches Hole Condition: Good

KB to GR/CF: 5.00 ft

**Serial #: 6752**

**Inside**

Press@RunDepth: 1159.50 psig @ 4197.00 ft (KB)

Capacity: 8000.00 psig

Start Date: 2014.08.09

End Date:

2014.08.10

Last Calib.: 2014.08.10

Start Time: 20:26:01

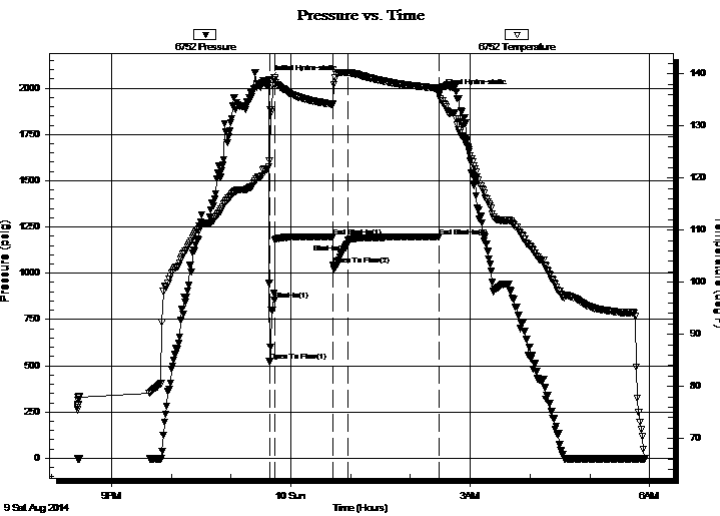
End Time:

05:55:40

Time On Btm: 2014.08.09 @ 23:38:00

Time Off Btm: 2014.08.10 @ 02:28:50

**TEST COMMENT:** 5 IF - BoB @ 1 min  
60 ISI - No return  
15 FF - BoB @ 1 min  
90 FSI - No return



## PRESSURE SUMMARY

Time (Min.)	Pressure (psig)	Temp (deg F)	Annotation
0	2047.13	122.14	Initial Hydro-static
1	522.56	123.33	Open To Flow (1)
6	855.63	139.21	Shut-In(1)
65	1197.05	134.18	End Shut-In(1)
65	1046.72	134.23	Open To Flow (2)
79	1159.50	140.21	Shut-In(2)
171	1196.18	137.21	End Shut-In(2)
171	1972.29	135.93	Final Hydro-static

## Recovery

Length (ft)	Description	Volume (bbl)
62.00	WCM - 30%W - 70%M	0.30
1699.00	MCW - 5%M - 95%W	22.70
650.00	MCW - 50%M - 50%W	9.12

## Gas Rates

	Choke (inches)	Pressure (psig)	Gas Rate (Mcf/d)



**TRILOBITE  
TESTING, INC.**

# DRILL STEM TEST REPORT

Sam Gary Jr. Associates Inc

**1-4S-36W Rawlins KS**

1515 Wynkoop STE 700  
Denver Co 80202

**Fisher Cattle Co#1-1**

Job Ticket: 58291

**DST#: 1**

ATTN: Clayton Camozzi

Test Start: 2014.08.09 @ 20:26:00

## GENERAL INFORMATION:

Formation: **LKC "B - D"**

Deviated: No Whipstock: ft (KB)

Time Tool Opened: 23:38:30

Time Test Ended: 05:55:40

Test Type: Conventional Bottom Hole (Initial)

Tester: Ryan Nichols

Unit No: 78

**Interval: 4196.00 ft (KB) To 4250.00 ft (KB) (TVD)**

Total Depth: 4250.00 ft (KB) (TVD)

Hole Diameter: 7.88 inches Hole Condition: Good

Reference Elevations: 3267.00 ft (KB)

3262.00 ft (CF)

KB to GR/CF: 5.00 ft

**Serial #: 8734 Fluid**

Press@RunDepth: psig @ 4163.00 ft (KB)

Start Date: 2014.08.09

End Date:

2014.08.10

Capacity: 8000.00 psig

Last Calib.:

2014.08.10

Start Time: 20:26:01

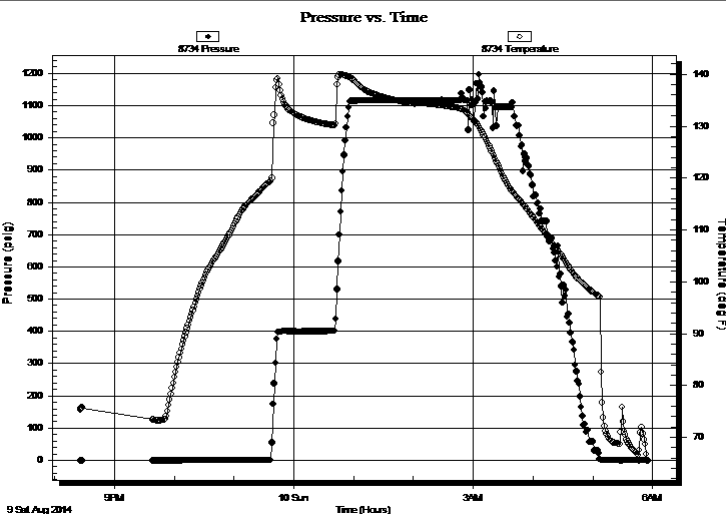
End Time:

05:55:40

Time On Btm:

Time Off Btm:

TEST COMMENT: 5 IF - BoB @ 1 min  
60 ISI - No return  
15 FF - BoB @ 1 min  
90 FSI - No return



## PRESSURE SUMMARY

Time (Min.)	Pressure (psig)	Temp (deg F)	Annotation

## Recovery

Length (ft)	Description	Volume (bbl)
62.00	WCM - 30%W - 70%M	0.30
1699.00	MCW - 5%M - 95%W	22.70
650.00	MCW - 50%M - 50%W	9.12

## Gas Rates

	Choke (inches)	Pressure (psig)	Gas Rate (Mcf/d)



**TRILOBITE  
TESTING, INC**

# DRILL STEM TEST REPORT

**FLUID SUMMARY**

Sam Gary Jr. Associates Inc

**1-4S-36W Rawlins KS**

1515 Wynkoop STE 700  
Denver Co 80202

**Fisher Cattle Co#1-1**

Job Ticket: 58291

**DST#: 1**

ATTN: Clayton Camozzi

Test Start: 2014.08.09 @ 20:26:00

## Mud and Cushion Information

Mud Type: Gel Chem  
Mud Weight: 9.00 lb/gal  
Viscosity: 60.00 sec/qt  
Water Loss: 6.80 in<sup>3</sup>  
Resistivity: ohm.m  
Salinity: 1500.00 ppm  
Filter Cake: 2.00 inches

Cushion Type:  
Cushion Length: ft  
Cushion Volume: bbl  
Gas Cushion Type:  
Gas Cushion Pressure: psig

Oil API: deg API  
Water Salinity: 42000 ppm

## Recovery Information

Recovery Table

Length ft	Description	Volume bbl
62.00	WCM - 30%W - 70%M	0.305
1699.00	MCW - 5%M - 95%W	22.703
650.00	MCW - 50%M - 50%W	9.118

Total Length: 2411.00 ft      Total Volume: 32.126 bbl

Num Fluid Samples: 0

Num Gas Bombs: 0

Serial #:

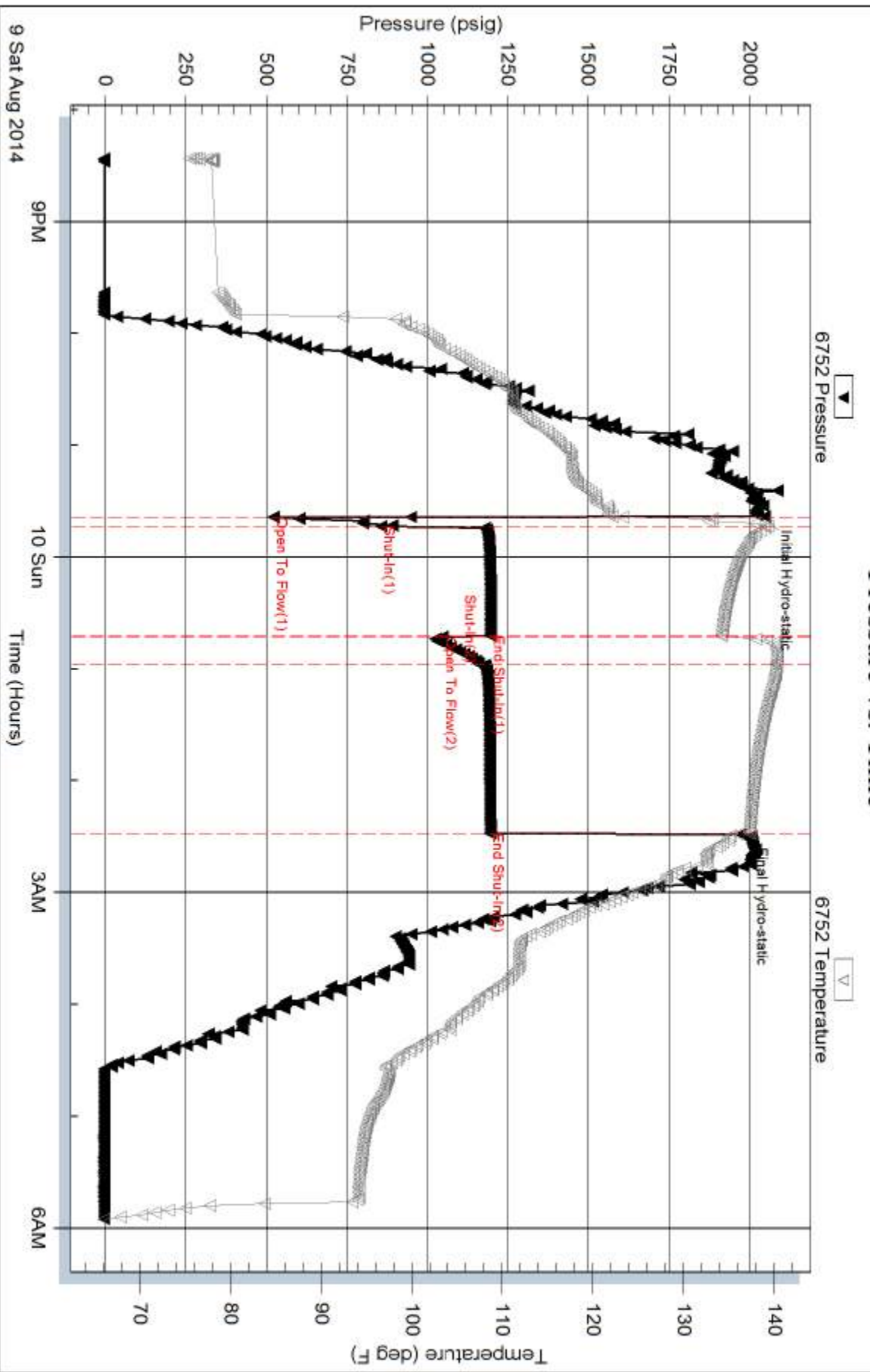
Laboratory Name:

Laboratory Location:

Recovery Comments: RW = .198 @ 65 DEG F

OS = 100ml M - 1900ml W 2000ml Total

### Pressure vs. Time



Serial #: 8734

Fluid

Sam Gary Jr. Associates Inc

Fisher Cattle Co#1-1

DST Test Number: 1

