



DRILL STEM TEST REPORT

Prepared For: **American Warrior**
PO Box 399
Garden City KS 67846

ATTN: Wyatt Urban

Hoelsner #1-10

10-18s-10w Rice,KS

Start Date: 2014.09.08 @ 20:06:00

End Date: 2014.09.09 @ 09:05:56

Job Ticket #: 60315 DST #: 1

Trilobite Testing, Inc
1515 Commerce Parkway Hays, KS 67601
ph: 785-625-4778 fax: 785-625-5620

Printed: 2014.09.12 @ 11:19:45

American Warrior
10-18s-10w Rice,KS
Hoelsner #1-10
DST # 1
LKC H-J
2014.09.08



**TRILOBITE
TESTING, INC**

DRILL STEM TEST REPORT

American Warrior
PO Box 399
Garden City KS 67846
ATTN: Wyatt Urban

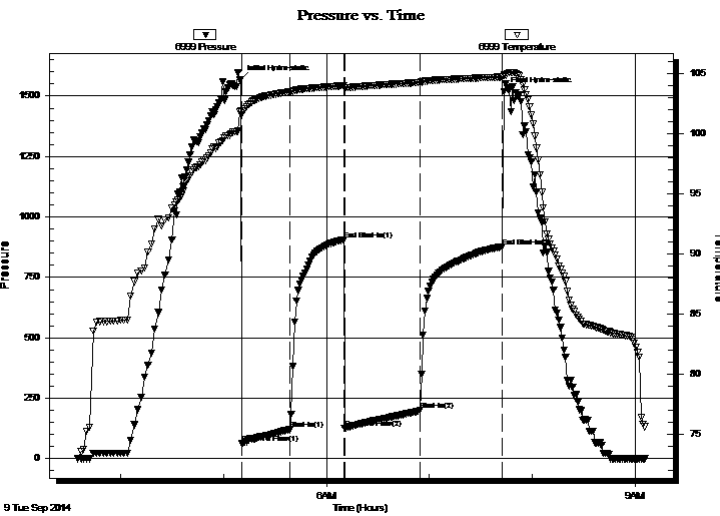
10-18s-10w Rice, KS
Hoelscher #1-10
Job Ticket: 60315 **DST#: 1**
Test Start: 2014.09.08 @ 20:06:00

GENERAL INFORMATION:

Formation: **LKC H-J**
Deviated: No Whipstock: ft (KB)
Time Tool Opened: 05:10:26
Time Test Ended: 09:05:56
Interval: **3105.00 ft (KB) To 3185.00 ft (KB) (TVD)**
Total Depth: 3185.00 ft (KB) (TVD)
Hole Diameter: 7.88 inches Hole Condition: Fair
Test Type: Conventional Bottom Hole (Initial)
Tester: Dustin Ellis
Unit No: 3315
Reference Elevations: 1797.00 ft (KB)
1787.00 ft (CF)
KB to GR/CF: 10.00 ft

Serial #: 6999 Outside
Press@RunDepth: 199.55 psig @ 3180.19 ft (KB) Capacity: 5000.00 psig
Start Date: 2014.09.09 End Date: 2014.09.09 Last Calib.: 2014.09.09
Start Time: 03:34:55 End Time: 09:05:56 Time On Btm: 2014.09.09 @ 05:09:56
Time Off Btm: 2014.09.09 @ 07:43:26

TEST COMMENT: IFP 30 Fair building blow built to the bottom of a 5 gallon bucket of water in 12 minutes.
ISI 30 No blow back
FFP 45 Fair building blow built to bottom bucket in 18 minutes.
FSI45 No blow back



PRESSURE SUMMARY

Time (Min.)	Pressure (psig)	Temp (deg F)	Annotation
0	1568.48	101.93	Initial Hydro-static
1	61.74	101.58	Open To Flow (1)
29	120.18	103.50	Shut-In(1)
60	903.88	104.01	End Shut-In(1)
61	125.69	103.89	Open To Flow (2)
105	199.55	104.29	Shut-In(2)
153	877.19	104.75	End Shut-In(2)
154	1517.80	104.90	Final Hydro-static

Recovery

Length (ft)	Description	Volume (bbl)
120.00	Oil cut mud Oil 3% Mud 97%	1.68
2.00	Clean oil 100%	0.03
180.00	Muddy w ater 90%w ater 10% mud	2.52

Gas Rates

	Choke (inches)	Pressure (psig)	Gas Rate (Mcf/d)



TRILOBITE TESTING, INC

DRILL STEM TEST REPORT

American Warrior
 PO Box 399
 Garden City KS 67846
 ATTN: Wyatt Urban

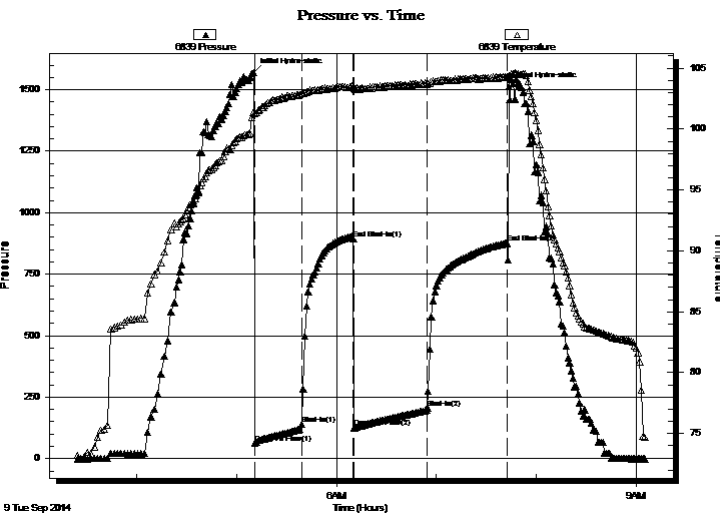
10-18s-10w Rice, KS
Hoelscher #1-10
 Job Ticket: 60315 **DST#: 1**
 Test Start: 2014.09.08 @ 20:06:00

GENERAL INFORMATION:

Formation: **LKC H-J**
 Deviated: No Whipstock: ft (KB)
 Time Tool Opened: 05:10:26
 Time Test Ended: 09:05:56
 Interval: **3105.00 ft (KB) To 3185.00 ft (KB) (TVD)**
 Total Depth: 3185.00 ft (KB) (TVD)
 Hole Diameter: 7.88 inches Hole Condition: Fair
 Test Type: Conventional Bottom Hole (Initial)
 Tester: Dustin Ellis
 Unit No: 3315
 Reference Elevations: 1797.00 ft (KB)
 1787.00 ft (CF)
 KB to GR/CF: 10.00 ft

Serial #: 6839 Inside
 Press@RunDepth: 876.39 psig @ 3180.19 ft (KB) Capacity: 5000.00 psig
 Start Date: 2014.09.09 End Date: 2014.09.09 Last Calib.: 2014.09.09
 Start Time: 03:24:30 End Time: 09:05:30 Time On Btm: 2014.09.09 @ 05:10:00
 Time Off Btm: 2014.09.09 @ 07:43:30

TEST COMMENT: IFP 30 Fair building blow built to the bottom of a 5 gallon bucket of water in 12 minutes.
 ISI 30 No blow back
 FFP 45 Fair building blow built to bottom bucket in 18 minutes.
 FSI45 No blow back



PRESSURE SUMMARY

Time (Min.)	Pressure (psig)	Temp (deg F)	Annotation
0	1570.30	101.38	Initial Hydro-static
1	63.53	101.30	Open To Flow (1)
29	138.48	102.95	Shut-In(1)
61	893.62	103.46	End Shut-In(1)
61	125.40	103.37	Open To Flow (2)
105	206.78	103.81	Shut-In(2)
153	876.39	104.32	End Shut-In(2)
154	1511.72	104.37	Final Hydro-static

Recovery

Length (ft)	Description	Volume (bbl)
120.00	Oil cut mud Oil 3% Mud 97%	1.68
2.00	Clean oil 100%	0.03
180.00	Muddy water 90% water 10% mud	2.52

Gas Rates

	Choke (inches)	Pressure (psig)	Gas Rate (Mcf/d)



**TRILOBITE
TESTING, INC**

DRILL STEM TEST REPORT

TOOL DIAGRAM

American Warrior

10-18s-10w Rice,KS

PO Box 399
Garden City KS 67846

Hoelscher #1-10

Job Ticket: 60315

DST#: 1

ATTN: Wyatt Urban

Test Start: 2014.09.08 @ 20:06:00

Tool Information

Drill Pipe:	Length: 3094.00 ft	Diameter: 3.80 inches	Volume: 43.40 bbl	Tool Weight:	2000.00 lb
Heavy Wt. Pipe:	Length: 0.00 ft	Diameter: 0.00 inches	Volume: 0.00 bbl	Weight set on Packer:	20000.00 lb
Drill Collar:	Length: 0.00 ft	Diameter: 2.25 inches	Volume: 0.00 bbl	Weight to Pull Loose:	52000.00 lb
			<u>Total Volume: 43.40 bbl</u>	Tool Chased	3.00 ft
Drill Pipe Above KB:	17.00 ft			String Weight: Initial	45000.00 lb
Depth to Top Packer:	3105.00 ft			Final	47000.00 lb
Depth to Bottom Packer:	ft				
Interval between Packers:	80.19 ft				
Tool Length:	108.19 ft				
Number of Packers:	2	Diameter: 6.75 inches			
Tool Comments:					

Tool Description	Length (ft)	Serial No.	Position	Depth (ft)	Accum. Lengths
------------------	-------------	------------	----------	------------	----------------

Shut In Tool	5.00			3082.00	
Hydraulic tool	5.00			3087.00	
Jars	6.00			3093.00	
Safety Joint	2.00			3095.00	
Top Packer	5.00			3100.00	
Packer	5.00			3105.00	28.00 Bottom Of Top Packer
Anchor	6.00			3111.00	
Change Over Sub	0.00			3111.00	
Drill Pipe	63.19			3174.19	
Change Over Sub	0.00			3174.19	
Anchor	6.00			3180.19	
Recorder	0.00	6839	Inside	3180.19	
Recorder	0.00	6999	Outside	3180.19	
Bull Plug	5.00			3185.19	80.19 Anchor Tool

Total Tool Length: 108.19



**TRILOBITE
TESTING, INC**

DRILL STEM TEST REPORT

FLUID SUMMARY

American Warrior

10-18s-10w Rice,KS

PO Box 399
Garden City KS 67846

Hoelscher #1-10

Job Ticket: 60315

DST#: 1

ATTN: Wyatt Urban

Test Start: 2014.09.08 @ 20:06:00

Mud and Cushion Information

Mud Type: Gel Chem

Cushion Type:

Oil API:

deg API

Mud Weight: 9.00 lb/gal

Cushion Length:

ft

Water Salinity:

19000 ppm

Viscosity: 6.30 sec/qt

Cushion Volume:

bbbl

Water Loss: 7.97 in³

Gas Cushion Type:

Resistivity: ohm.m

Gas Cushion Pressure:

psig

Salinity: 4700.00 ppm

Filter Cake: 1.00 inches

Recovery Information

Recovery Table

Length ft	Description	Volume bbl
120.00	Oil cut mud Oil 3% Mud 97%	1.683
2.00	Clean oil 100%	0.028
180.00	Muddy w ater 90%w ater 10%mud	2.525

Total Length: 302.00 ft Total Volume: 4.236 bbl

Num Fluid Samples: 0

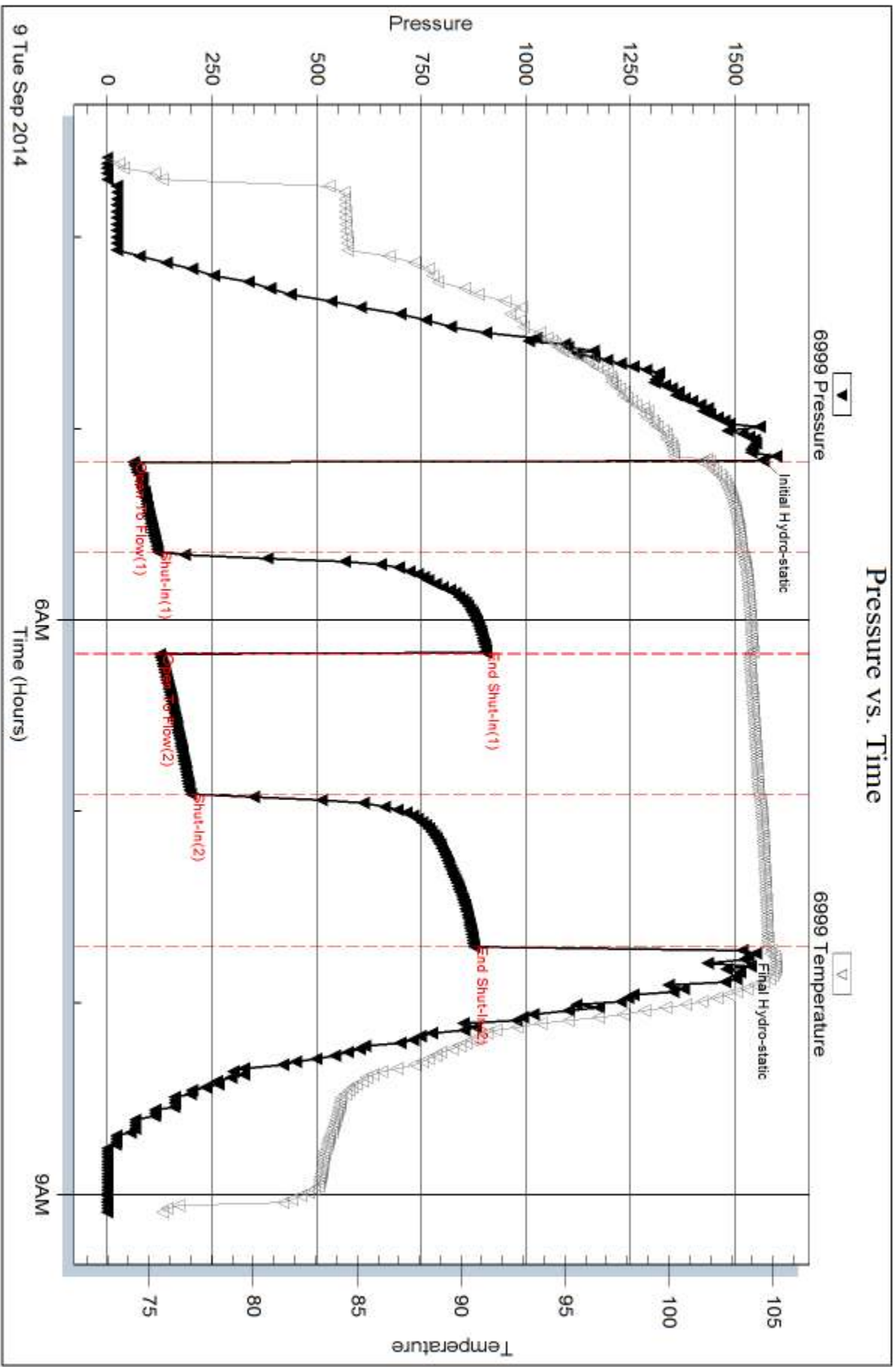
Num Gas Bombs: 0

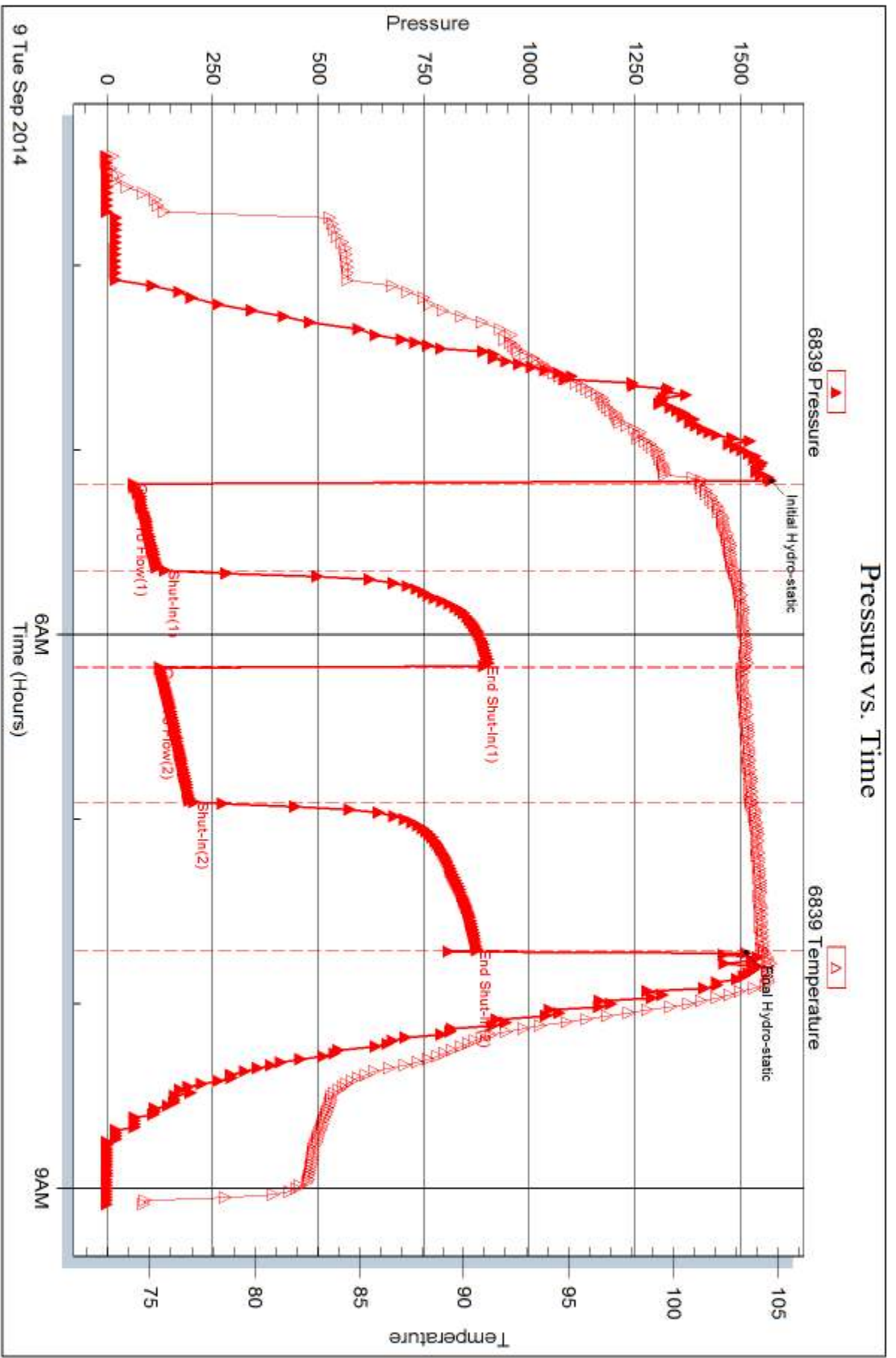
Serial #:

Laboratory Name:

Laboratory Location:

Recovery Comments:







DRILL STEM TEST REPORT

Prepared For: **American Warrior**

PO Box 399
Garden City KS 67846

ATTN: Wyatt Urban

Hoelsner #1-10

10-18s-10w Rice,KS

Start Date: 2014.09.09 @ 08:10:00

End Date:

Job Ticket #: 60316 DST #: 2

Trilobite Testing, Inc
1515 Commerce Parkway Hays, KS 67601
ph: 785-625-4778 fax: 785-625-5620

Printed: 2014.09.12 @ 11:18:47



TRILOBITE TESTING, INC

DRILL STEM TEST REPORT

American Warrior
 PO Box 399
 Garden City KS 67846
 ATTN: Wyatt Urban

10-18s-10w Rice, KS
Hoelscher #1-10
 Job Ticket: 60316 **DST#: 2**
 Test Start: 2014.09.09 @ 08:10:00

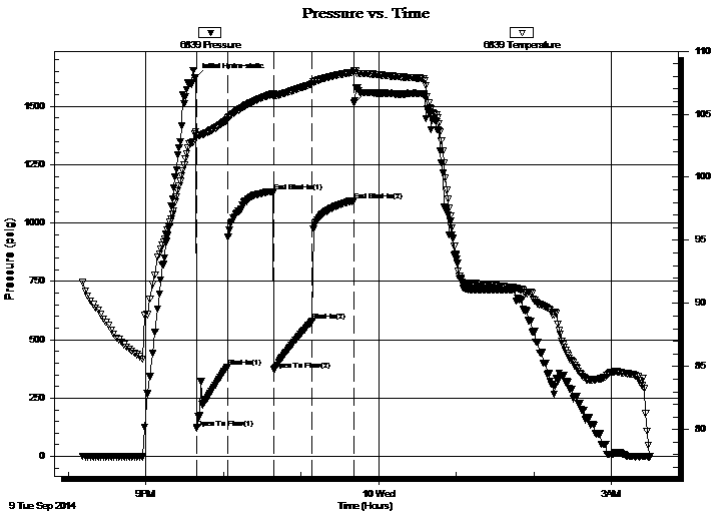
GENERAL INFORMATION:

Formation: **Arbuckle**
 Deviated: No Whipstock: ft (KB)
 Time Tool Opened:
 Time Test Ended:
Interval: 3207.00 ft (KB) To 3280.00 ft (KB) (TVD)
 Total Depth: 3280.00 ft (KB) (TVD)
 Hole Diameter: 7.88 inches Hole Condition: Fair
 Test Type: Conventional Bottom Hole (Initial)
 Tester: Dustin Ellis
 Unit No: 3315
 Reference Elevations: 1797.00 ft (KB)
 1787.00 ft (CF)
 KB to GR/CF: 10.00 ft

Serial #: 6839 Inside
 Press@RunDepth: 579.69 psig @ 3274.19 ft (KB) Capacity: 5000.00 psig
 Start Date: 2014.09.09 End Date: 2014.09.10 Last Calib.: 2014.09.10
 Start Time: 20:11:00 End Time: 03:30:00 Time On Btm: 2014.09.09 @ 21:38:30
 Time Off Btm: 2014.09.09 @ 23:41:00

TEST COMMENT: IFP 30 BOB in 2 min
 ISI 30 No blow back
 FFP 30 BOB in 2 1/2 min
 FSI 30 No blow back

PRESSURE SUMMARY



Time (Min.)	Pressure (psig)	Temp (deg F)	Annotation
0	1623.01	103.59	Initial Hydro-static
1	119.36	103.25	Open To Flow (1)
25	383.54	104.55	Shut-In(1)
60	1135.14	106.61	End Shut-In(1)
61	371.63	106.42	Open To Flow (2)
90	579.69	107.40	Shut-In(2)
122	1095.45	108.32	End Shut-In(2)
123	1513.32	108.47	Final Hydro-static

Recovery

Length (ft)	Description	Volume (bbl)
1071.00	Clean oil 100%	15.02
252.00	Oil cut mud 98%oil 2%mud	3.53

Gas Rates

	Choke (inches)	Pressure (psig)	Gas Rate (Mcf/d)



**TRILOBITE
TESTING, INC**

DRILL STEM TEST REPORT

American Warrior
PO Box 399
Garden City KS 67846
ATTN: Wyatt Urban

10-18s-10w Rice, KS
Hoelscher #1-10
Job Ticket: 60316 **DST#: 2**
Test Start: 2014.09.09 @ 08:10:00

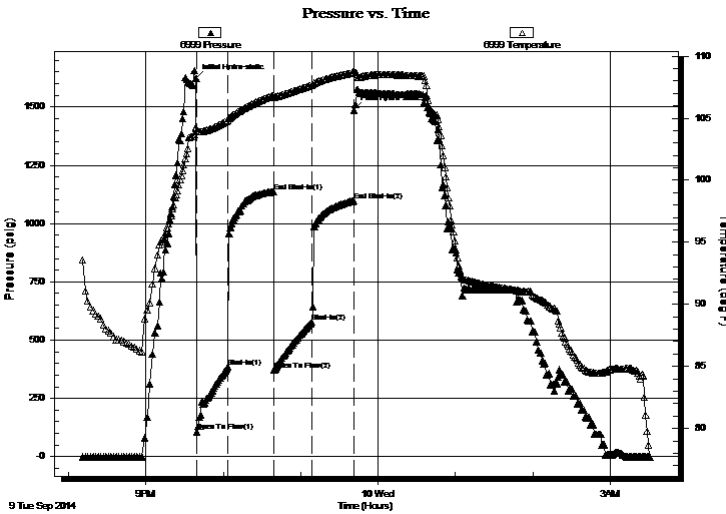
GENERAL INFORMATION:

Formation: **Arbuckle**
Deviated: No Whipstock: ft (KB)
Time Tool Opened:
Time Test Ended:
Interval: 3207.00 ft (KB) To 3280.00 ft (KB) (TVD)
Total Depth: 3280.00 ft (KB) (TVD)
Hole Diameter: 7.88 inches Hole Condition: Fair
Test Type: Conventional Bottom Hole (Initial)
Tester: Dustin Ellis
Unit No: 3315
Reference Elevations: 1797.00 ft (KB)
1787.00 ft (CF)
KB to GR/CF: 10.00 ft

Serial #: 6999 Outside
Press@RunDepth: 1096.97 psig @ 3274.19 ft (KB) Capacity: 5000.00 psig
Start Date: 2014.09.09 End Date: 2014.09.10 Last Calib.: 2014.09.10
Start Time: 20:11:00 End Time: 03:31:00 Time On Btm: 2014.09.09 @ 21:39:00
Time Off Btm: 2014.09.09 @ 23:41:30

TEST COMMENT: IFP 30 BOB in 2 min
ISI 30 No blow back
FFP 30 BOB in 2 1/2 min
FSI 30 No blow back

PRESSURE SUMMARY



Time (Min.)	Pressure (psig)	Temp (deg F)	Annotation
0	1621.14	104.24	Initial Hydro-static
1	107.61	103.93	Open To Flow (1)
25	385.90	104.83	Shut-In(1)
60	1135.74	106.85	End Shut-In(1)
61	371.63	106.64	Open To Flow (2)
90	577.84	107.67	Shut-In(2)
122	1096.97	108.66	End Shut-In(2)
123	1486.51	108.85	Final Hydro-static

Recovery

Length (ft)	Description	Volume (bbl)
1071.00	Clean oil 100%	15.02
252.00	Oil cut mud 98%oil 2%mud	3.53

Gas Rates

	Choke (inches)	Pressure (psig)	Gas Rate (Mcf/d)



**TRILOBITE
TESTING, INC**

DRILL STEM TEST REPORT

TOOL DIAGRAM

American Warrior

10-18s-10w Rice,KS

PO Box 399
Garden City KS 67846

Hoelscher #1-10

Job Ticket: 60316

DST#: 2

ATTN: Wyatt Urban

Test Start: 2014.09.09 @ 08:10:00

Tool Information

Drill Pipe:	Length: 3188.00 ft	Diameter: 3.80 inches	Volume: 44.72 bbl	Tool Weight:	2000.00 lb
Heavy Wt. Pipe:	Length: 0.00 ft	Diameter: 0.00 inches	Volume: 0.00 bbl	Weight set on Packer:	20000.00 lb
Drill Collar:	Length: 0.00 ft	Diameter: 0.00 inches	Volume: 0.00 bbl	Weight to Pull Loose:	57000.00 lb
			<u>Total Volume: 44.72 bbl</u>	Tool Chased	0.00 ft
Drill Pipe Above KB:	9.00 ft			String Weight: Initial	50000.00 lb
Depth to Top Packer:	3207.00 ft			Final	53000.00 lb
Depth to Bottom Packer:	ft				
Interval between Packers:	72.19 ft				
Tool Length:	100.19 ft				
Number of Packers:	2	Diameter: 6.75 inches			

Tool Comments:

Tool Description

Tool Description	Length (ft)	Serial No.	Position	Depth (ft)	Accum. Lengths
Shut In Tool	5.00			3184.00	
Hydraulic tool	5.00			3189.00	
Jars	6.00			3195.00	
Safety Joint	2.00			3197.00	
Top Packer	5.00			3202.00	
Packer	5.00			3207.00	28.00 Bottom Of Top Packer
Anchor	6.00			3213.00	
Change Over Sub	0.75			3213.75	
Drill Pipe	31.69			3245.44	
Change Over Sub	0.75			3246.19	
Anchor	28.00			3274.19	
Recorder	0.00	6839	Inside	3274.19	
Recorder	0.00	6999	Outside	3274.19	
Bull Plug	5.00			3279.19	72.19 Anchor Tool

Total Tool Length: 100.19



**TRILOBITE
TESTING, INC**

DRILL STEM TEST REPORT

FLUID SUMMARY

American Warrior

10-18s-10w Rice,KS

PO Box 399
Garden City KS 67846

Hoelsher #1-10

Job Ticket: 60316

DST#: 2

ATTN: Wyatt Urban

Test Start: 2014.09.09 @ 08:10:00

Mud and Cushion Information

Mud Type: Gel Chem

Cushion Type:

Oil API:

39 deg API

Mud Weight: 9.00 lb/gal

Cushion Length:

ft

Water Salinity:

ppm

Viscosity: 68.00 sec/qt

Cushion Volume:

dbl

Water Loss: 8.78 in³

Gas Cushion Type:

Resistivity: ohm.m

Gas Cushion Pressure:

psig

Salinity: 6200.00 ppm

Filter Cake: 1.00 inches

Recovery Information

Recovery Table

Length ft	Description	Volume dbl
1071.00	Clean oil 100%	15.023
252.00	Oil cut mud 98%oil 2%mud	3.535

Total Length: 1323.00 ft Total Volume: 18.558 dbl

Num Fluid Samples: 0

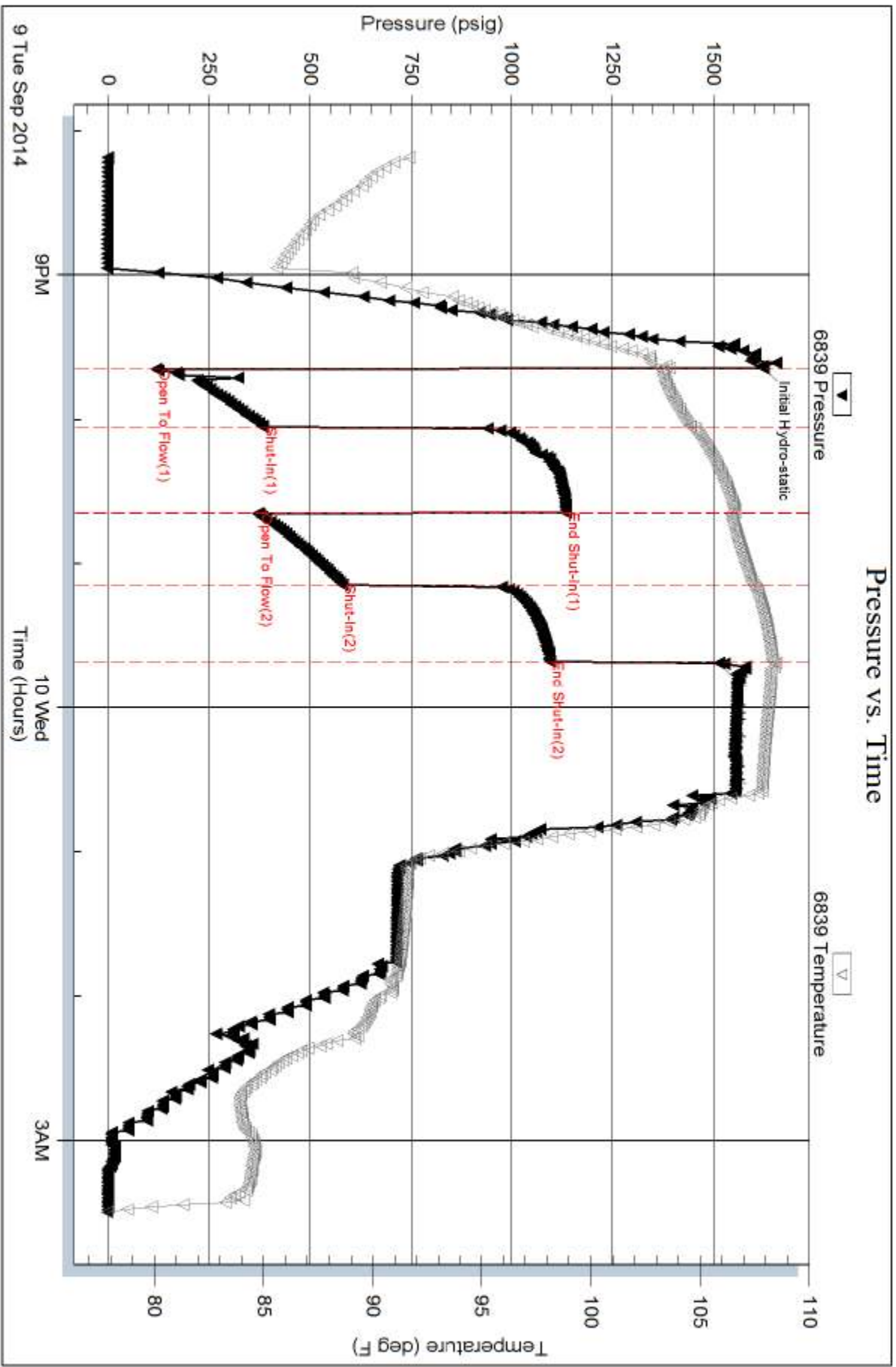
Num Gas Bombs: 0

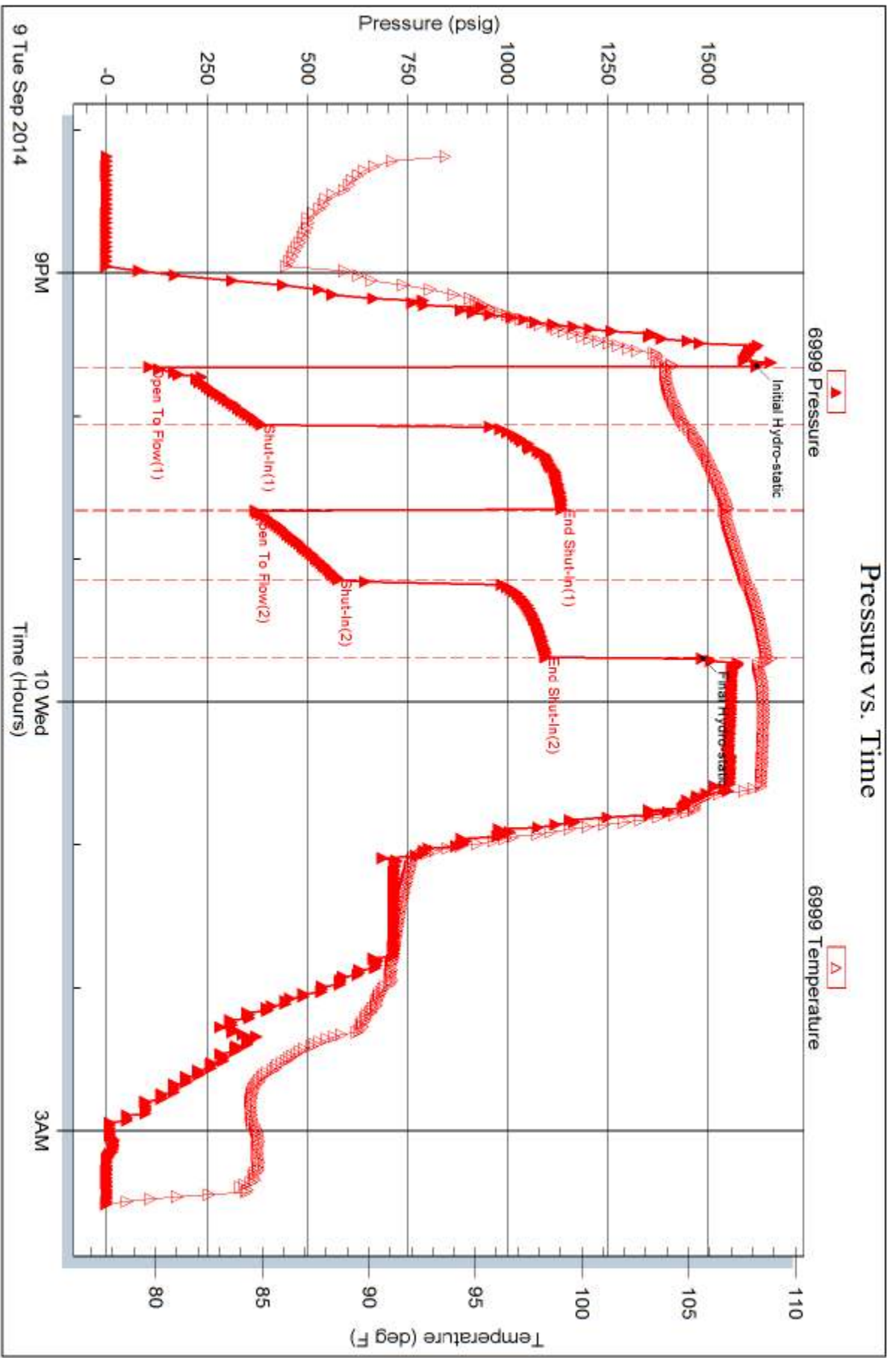
Serial #:

Laboratory Name:

Laboratory Location:

Recovery Comments:







TRILOBITE TESTING INC.

1515 Commerce Parkway • Hays, Kansas 67601

Test Ticket

NO. 60315

Well Name & No. Hoelscher 1-10 Test No. 1 Date 9-9-14
 Company American Warrior Elevation 1297 KB 1787 GL
 Address 3118 Cummings RD Garden city Kansas 67846
 Co. Rep / Geo. Wyatt Rig Duke 8
 Location: Sec. 10 Twp. 18 Rge. 10W Co. Rice State KS

Interval Tested 3105 - 3185 Zone Tested hanging H-I-J
 Anchor Length 80 Drill Pipe Run 3094 Mud Wt. 9.1
 Top Packer Depth 3100 Drill Collars Run 512.160 Vis 6.3
 Bottom Packer Depth 3105 Wt. Pipe Run 20,000 WL 8.6
 Total Depth 3185 Chlorides 4700 ppm System LCM

Blow Description 1st open - Fair building blow built to bottom bucket in 20 min
1st shut in - No blow back.
2nd open - Fair building blow built to bottom bucket 18 minutes
2nd shut in - No blow back.

Rec	Feet of	%gas	%oil	%water	%mud
<u>120</u>	<u>oil cut mud</u>	<u>3</u>		<u>97</u>	
<u>182</u>	<u>clean o.i</u>	<u>100</u>			
<u>180</u>	<u>muddy water</u>			<u>90</u>	<u>10</u>

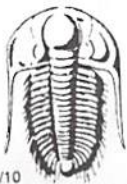
Rec Total 302 BHT — Gravity — API RW — @ — °F Chlorides 19000 ppm

(A) Initial Hydrostatic 1568 Test Bottom hole 1150 T-On Location 9:00pm
 (B) First Initial Flow 61 Jars Yes 250 T-Started 3:30am
 (C) First Final Flow 120 Safety Joint Yes 75 T-Open 4:50am
 (D) Initial Shut-In 903 Circ Sub none T-Pulled 7:20am
 (E) Second Initial Flow 125 Hourly Standby ? wait 1.5 150 T-Out —
 (F) Second Final Flow 199 Mileage 70 miles road 108.50 Comments Drawworks brake
 (G) Final Shut-In 877 Sampler — down - pulled tight
 (H) Final Hydrostatic 1517 Straddle — waited !!!

Ruined Shale Packer —
 Ruined Packer —
 Extra Copies —
 Initial Open 30
 Initial Shut-In 30
 Final Flow 45
 Final Shut-In 45
 Extra Recorder none
 Day Standby wait
 Accessibility —
 Sub Total 1983.50
 Total — 1983.50
 MP/DST Disc't —

Approved By — Our Representative Dustin Ellis

Trilobite Testing Inc. shall not be liable for damaged of any kind of the property or personnel of the one for whom a test is made, or for any loss suffered or sustained, directly or indirectly, through the use of its equipment, or its statements or opinion concerning the results of any test, tools lost or damaged in the hole shall be paid for at cost by the party for whom the test is made.



TRILOBITE TESTING INC.

1515 Commerce Parkway • Hays, Kansas 67601

Test Ticket

NO. 60316

Well Name & No. Hoelsher 1-10 Test No. 2 Date 9-9-14
 Company American Warrior Elevation 1797 KB 1707 GL
 Address 3118 Cummings RD Garden city Kansas 67846
 Co. Rep / Geo. Wyatt Urband Rig Duke 8
 Location: Sec. 10 Twp. 18s Rge. 10w Co. Rice State KS

Interval Tested 3207 - 3280 Zone Tested Arbuckle
 Anchor Length 72 Drill Pipe Run 3188 Mud Wt. 9.4
 Top Packer Depth 3202 Drill Collars Run 0 Vis 60
 Bottom Packer Depth 3207 Wt. Pipe Run 20,000 WL 8.8
 Total Depth 3280 Chlorides 6200 ppm System LCM 0

Blow Description 1st open - strong building blow built to bottom bucket 2m.
1st shut-in - No blow back.
2nd open - strong blow built to the bottom of a 5 gallon bucket of water 2.5m.
2nd shut-in - No blow back.

Rec	Feet of	%gas	%oil	%water	%mud
<u>1071</u>	<u>clean oil</u>	<u>100</u>			
<u>252</u>	<u>oil cut mud</u>	<u>98</u>		<u>2</u>	

Rec Total 1323 BHT _____ Gravity 39 API RW _____ @ _____ °F Chlorides _____ ppm

(A) Initial Hydrostatic 1623 Test bottom hole 1150 T-On Location _____
 (B) First Initial Flow 119 Jars yes 250 T-Started 8:10pm
 (C) First Final Flow 383 Safety Joint yes 75 T-Open 9:45pm
 (D) Initial Shut-In 1135 Circ Sub _____ T-Pulled 11:45pm
 (E) Second Initial Flow 371 Hourly Standby _____ T-Out 4:00am
 (F) Second Final Flow 579 Mileage 80 108.50 Comments: waited for storm - lightning
 (G) Final Shut-In 1095 Sampler now
 (H) Final Hydrostatic 1513 Straddle none

Shale Packer yes 250 Ruined Shale Packer _____
 Extra Packer yes Ruined Packer _____
 Extra Recorder _____ Extra Copies _____
 Day Standby _____ Sub Total _____ 0
 Accessibility _____ Total _____ 1833.50
 Sub Total 1833.50 MP/DST Disc't _____

Approved By _____ Our Representative Dustin Ellis
 Trilobite Testing Inc. shall not be liable for damaged of any kind of the property or personnel of the one for whom a test is made, or for any loss suffered or sustained, directly or indirectly, through the use of its equipment, or its statements or opinion concerning the results of any test, tools lost or damaged in the hole shall be paid for at cost by the party for whom the test is made.