



## DRILL STEM TEST REPORT

Prepared For: **TDI**

1310 Bison Rd  
Hays, KS 67601

ATTN: Herb Deines

### **Zamecnik #1**

### **8-11S-11W Russell,KS**

Start Date: 2014.11.12 @ 15:29:08

End Date: 2014.11.12 @ 22:30:38

Job Ticket #: 58408                      DST #: 1

Trilobite Testing, Inc  
1515 Commerce Parkway Hays, KS 67601  
ph: 785-625-4778 fax: 785-625-5620

Printed: 2014.11.17 @ 13:53:05

TDI  
8-11S-11W Russell,KS  
Zamecnik #1  
DST # 1  
KC "D-G"  
2014.11.12



**TRILOBITE  
TESTING, INC**

# DRILL STEM TEST REPORT

TDI  
1310 Bison Rd  
Hays, KS 67601  
ATTN: Herb Deines

**8-11S-11W Russell, KS**  
**Zamecnik #1**  
Job Ticket: 58408 **DST#: 1**  
Test Start: 2014.11.12 @ 15:29:08

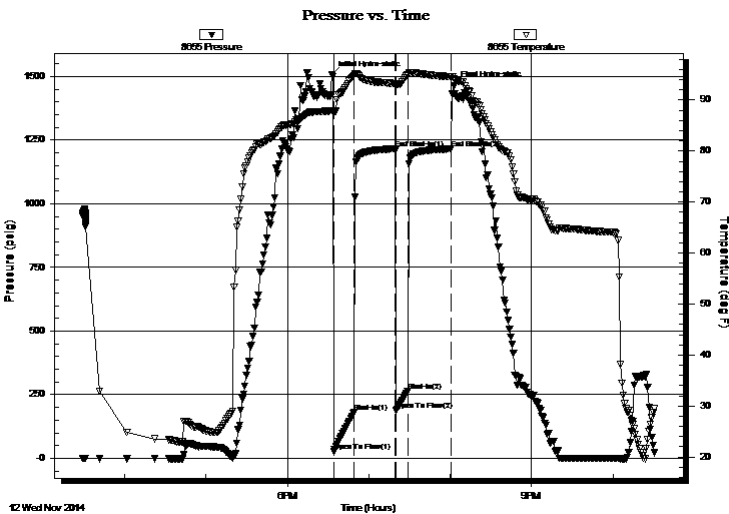
## GENERAL INFORMATION:

Formation: **KC "D-G"**  
 Deviated: No Whipstock: ft (KB)  
 Test Type: Conventional Bottom Hole (Initial)  
 Time Tool Opened: 18:34:08 Tester: Brannan Lonsdale  
 Time Test Ended: 22:30:38 Unit No: 62  
 Interval: **2922.00 ft (KB) To 2988.00 ft (KB) (TVD)** Reference Elevations: 1627.00 ft (KB)  
 Total Depth: 2988.00 ft (KB) (TVD) 1617.00 ft (CF)  
 Hole Diameter: 7.88 inches Hole Condition: Fair KB to GR/CF: 10.00 ft

**Serial #: 8655 Outside**  
 Press@RunDepth: 264.88 psig @ 2923.00 ft (KB) Capacity: 8000.00 psig  
 Start Date: 2014.11.12 End Date: 2014.11.12 Last Calib.: 2014.11.12  
 Start Time: 15:29:09 End Time: 22:30:38 Time On Btm: 2014.11.12 @ 18:32:38  
 Time Off Btm: 2014.11.12 @ 20:02:38

TEST COMMENT: 15- IF- BOB 2 1/2 mins  
 30- IS- No blow  
 10- FF- BOB 3 1/2 mins  
 30- FS- No blow

## PRESSURE SUMMARY



Time (Min.)	Pressure (psig)	Temp (deg F)	Annotation
0	1505.18	87.89	Initial Hydro-static
2	28.75	87.30	Open To Flow (1)
17	180.68	94.77	Shut-In(1)
47	1216.29	93.24	End Shut-In(1)
48	187.81	92.98	Open To Flow (2)
56	264.88	94.99	Shut-In(2)
88	1215.80	94.57	End Shut-In(2)
90	1462.94	94.11	Final Hydro-static

## Recovery

Length (ft)	Description	Volume (bbl)
530.00	WM, 30%W 70%M	7.24

## Gas Rates

Choke (inches)	Pressure (psig)	Gas Rate (Mcf/d)



**TRILOBITE  
TESTING, INC**

# DRILL STEM TEST REPORT

TDI  
1310 Bison Rd  
Hays, KS 67601  
ATTN: Herb Deines

8-11S-11W Russell, KS  
**Zamecnik #1**  
Job Ticket: 58408 **DST#: 1**  
Test Start: 2014.11.12 @ 15:29:08

## GENERAL INFORMATION:

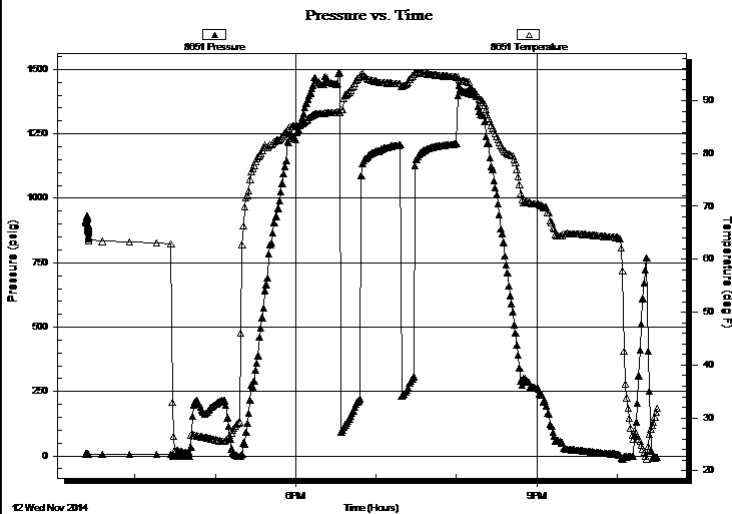
Formation: **KC "D-G"**  
 Deviated: No Whipstock: ft (KB)  
 Test Type: Conventional Bottom Hole (Initial)  
 Time Tool Opened: 18:34:08 Tester: Brannan Lonsdale  
 Time Test Ended: 22:30:38 Unit No: 62  
**Interval: 2922.00 ft (KB) To 2988.00 ft (KB) (TVD)**  
 Reference Elevations: 1627.00 ft (KB)  
 Total Depth: 2988.00 ft (KB) (TVD) 1617.00 ft (CF)  
 Hole Diameter: 7.88 inches Hole Condition: Fair KB to GR/CF: 10.00 ft

## Serial #: 8651

Inside

Press@RunDepth: psig @ 2923.00 ft (KB) Capacity: 8000.00 psig  
 Start Date: 2014.11.12 End Date: 2014.11.12 Last Calib.: 2014.11.12  
 Start Time: 15:23:29 End Time: 22:30:28 Time On Btm:  
 Time Off Btm:

TEST COMMENT: 15- IF- BOB 2 1/2 mins  
 30- IS- No blow  
 10- FF- BOB 3 1/2 mins  
 30- FS- No blow



## PRESSURE SUMMARY

Time (Min.)	Pressure (psig)	Temp (deg F)	Annotation

## Recovery

Length (ft)	Description	Volume (bbl)
530.00	WM, 30%W 70%M	7.24

## Gas Rates

	Choke (inches)	Pressure (psig)	Gas Rate (Mcf/d)



**TRILOBITE  
TESTING, INC**

# DRILL STEM TEST REPORT

**TOOL DIAGRAM**

TDI  
1310 Bison Rd  
Hays, KS 67601  
ATTN: Herb Deines

**8-11S-11W Russell,KS**  
**Zamecnik #1**  
Job Ticket: 58408 **DST#: 1**  
Test Start: 2014.11.12 @ 15:29:08

**Tool Information**

Drill Pipe:	Length: 2925.00 ft	Diameter: 3.75 inches	Volume: 39.96 bbl	Tool Weight: 2000.00 lb
Heavy Wt. Pipe:	Length: ft	Diameter: inches	Volume: - bbl	Weight set on Packer: 25000.00 lb
Drill Collar:	Length: 0.00 ft	Diameter: 2.25 inches	Volume: 0.00 bbl	Weight to Pull Loose: 32000.00 lb
			<u>Total Volume: - bbl</u>	Tool Chased 0.00 ft
Drill Pipe Above KB:	23.00 ft			String Weight: Initial 27000.00 lb
Depth to Top Packer:	2922.00 ft			Final 28000.00 lb
Depth to Bottom Packer:	ft			
Interval between Packers:	66.00 ft			
Tool Length:	86.00 ft			
Number of Packers:	2	Diameter: 6.75 inches		

Tool Comments:

<b>Tool Description</b>	<b>Length (ft)</b>	<b>Serial No.</b>	<b>Position</b>	<b>Depth (ft)</b>	<b>Accum. Lengths</b>
-------------------------	--------------------	-------------------	-----------------	-------------------	-----------------------

Change Over Sub	1.00			2903.00	
Shut In Tool	5.00			2908.00	
Hydraulic tool	5.00			2913.00	
Packer	5.00			2918.00	20.00 Bottom Of Top Packer
Packer	4.00			2922.00	
Stubb	1.00			2923.00	
Recorder	0.00	8651	Inside	2923.00	
Recorder	0.00	8655	Outside	2923.00	
Perforations	28.00			2951.00	
Change Over Sub	1.00			2952.00	
Drill Pipe	32.00			2984.00	
Change Over Sub	1.00			2985.00	
Bullnose	3.00			2988.00	66.00 Bottom Packers & Anchor

**Total Tool Length: 86.00**



**TRILOBITE  
TESTING, INC**

# DRILL STEM TEST REPORT

## FLUID SUMMARY

TDI  
1310 Bison Rd  
Hays, KS 67601  
ATTN: Herb Deines

**8-11S-11W Russell, KS**  
**Zamecnik #1**  
Job Ticket: 58408  
Test Start: 2014.11.12 @ 15:29:08

**DST#: 1**

### Mud and Cushion Information

Mud Type: Gel Chem	Cushion Type:	Oil API:	deg API
Mud Weight: 10.00 lb/gal	Cushion Length: ft	Water Salinity:	95000 ppm
Viscosity: 48.00 sec/qt	Cushion Volume: bbl		
Water Loss: 7.59 in <sup>3</sup>	Gas Cushion Type:		
Resistivity: ohm.m	Gas Cushion Pressure: psig		
Salinity: 7200.00 ppm			
Filter Cake: inches			

### Recovery Information

Recovery Table

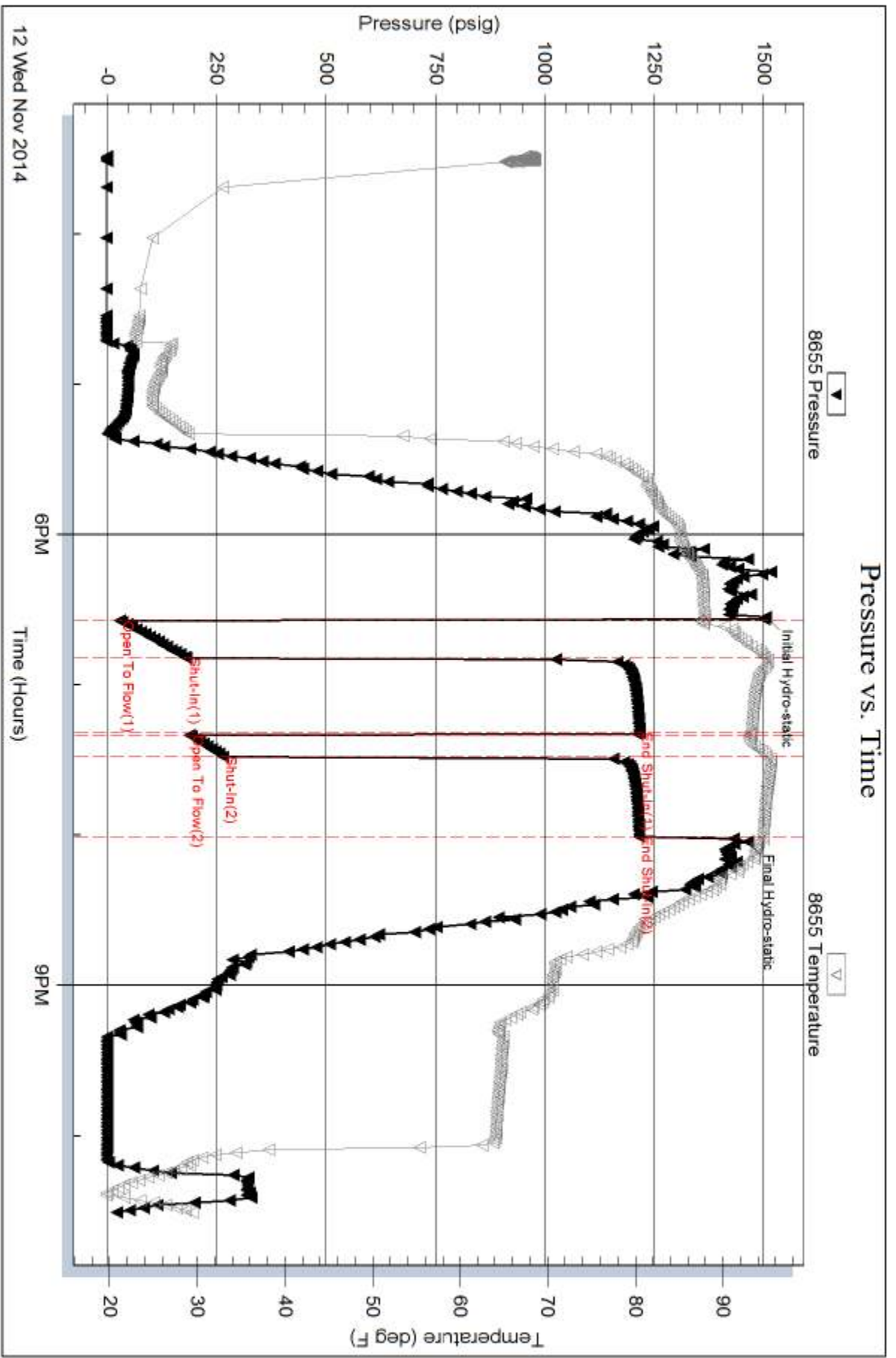
Length ft	Description	Volume bbl
530.00	WM, 30%W 70%M	7.240

Total Length: 530.00 ft      Total Volume: 7.240 bbl

Num Fluid Samples: 0      Num Gas Bombs: 0      Serial #:

Laboratory Name:      Laboratory Location:

Recovery Comments:

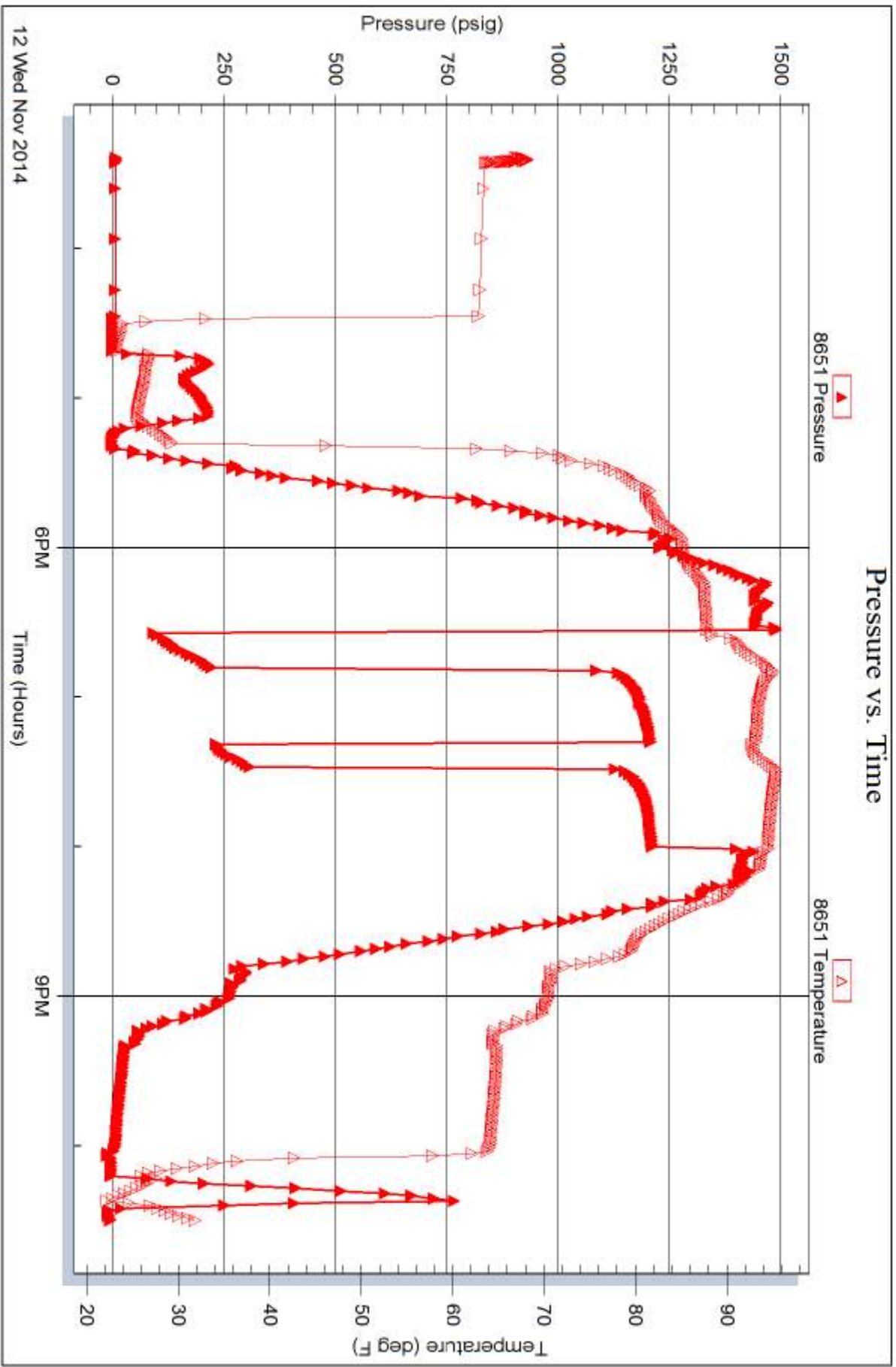


Serial #: 8651

Inside TDI

Zamecnik #1

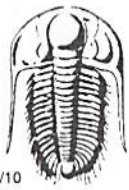
DST Test Number: 1



Trilobite Testing, Inc

Ref. No: 58408

Printed: 2014.11.17 @ 13:53:07



# TRILOBITE TESTING INC.

1515 Commerce Parkway • Hays, Kansas 67601

## Test Ticket

NO. **58408**

4/10

Well Name & No. Zamechik #1 Test No. 1 Date 11/12/14  
 Company TDI Elevation 1627 KB 1617 GL  
 Address 1310 Bison Rd. Hays, KS 67601  
 Co. Rep / Geo. Herb Demes Rig Southwind #1  
 Location: Sec. 8 Twp. 11 S Rge. 11 W Co. Russell State KS

Interval Tested 2922-2988 Zone Tested KC "D-G"  
 Anchor Length 66' Drill Pipe Run 2925 Mud Wt. 9.6  
 Top Packer Depth 2917 Drill Collars Run — Vis 48  
 Bottom Packer Depth 2922 Wt. Pipe Run — WL 7.6  
 Total Depth 2988 Chlorides 7,200 ppm System LCM 1#  
 Blow Description IF - BOB 2 1/2 hrs  
ISI - No How  
FF - BOB 3 1/2 mins  
FSD - No How

Rec	Feet of	%gas	%oil	%water	%mud
<u>530</u>	<u>WM</u>			<u>30</u>	<u>70</u>
Rec	Feet of	%gas	%oil	%water	%mud
Rec	Feet of	%gas	%oil	%water	%mud
Rec	Feet of	%gas	%oil	%water	%mud

Rec Total 530' BHT 95° Gravity — API RW .14 @ 35° F Chlorides 95,000 ppm  
 (A) Initial Hydrostatic 1505  Test 1150 T-On Location 1455  
 (B) First Initial Flow 29  Jars — T-Started 1529  
 (C) First Final Flow 181  Safety Joint — T-Open 1835  
 (D) Initial Shut-In 1216  Circ Sub — T-Pulled 2000  
 (E) Second Initial Flow 188  Hourly Standby — T-Out 2232  
 (F) Second Final Flow 265  Mileage 142 RT x 2 Comments Loaded tools  
 (G) Final Shut-In 1216  Sampler 117rt 181.35+181.35 1/15 @ 1400  
 (H) Final Hydrostatic 1463  Straddle —  Ruined Shale Packer —  
 Shale Packer —  Ruined Packer —  
 Extra Packer —  Extra Copies —  
 Extra Recorder — Sub Total 1600  
 Day Standby 2.5d 3.5h Total 3112.70  
 Accessibility — MP/DST Disc't —  
 Sub Total 1512.70

Approved By \_\_\_\_\_ Our Representative Brannon Lonsdale

Trilobite Testing Inc. shall not be liable for damaged of any kind of the property or personnel of the one for whom a test is made, or for any loss suffered or sustained, directly or indirectly, through the use of its equipment, or its statements or opinion concerning the results of any test, tools lost or damaged in the hole shall be paid for at cost by the party for whom the test is made.