



TRILOBITE TESTING, INC

DRILL STEM TEST REPORT

Bennett & Schulte Oil Co

13 13s 16w Ellis

P.O. Box 329
Russell KS 67665-0329

Hoffman # 3

ATTN: Bob Hopkins

Job Ticket: 60613

DST#: 1

Test Start: 2014.11.03 @ 13:28:00

GENERAL INFORMATION:

Formation: **LKC "A - D"**
 Deviated: No Whipstock: ft (KB)
 Time Tool Opened: 15:08:45
 Time Test Ended: 18:38:00

Test Type: Conventional Bottom Hole (Initial)

Tester: Jim Svaty

Unit No: 76

Interval: **3117.00 ft (KB) To 3192.00 ft (KB) (TVD)**

Total Depth: 3192.00 ft (KB) (TVD)

Hole Diameter: 7.88 inches Hole Condition: Fair

Reference Elevations: 1964.00 ft (KB)

1958.00 ft (CF)

KB to GR/CF: 6.00 ft

Serial #: 8289

Inside

Press@RunDepth: 55.03 psig @ 3124.00 ft (KB)

Start Date: 2014.11.03 End Date: 2014.11.03

Start Time: 13:28:00 End Time: 18:38:00

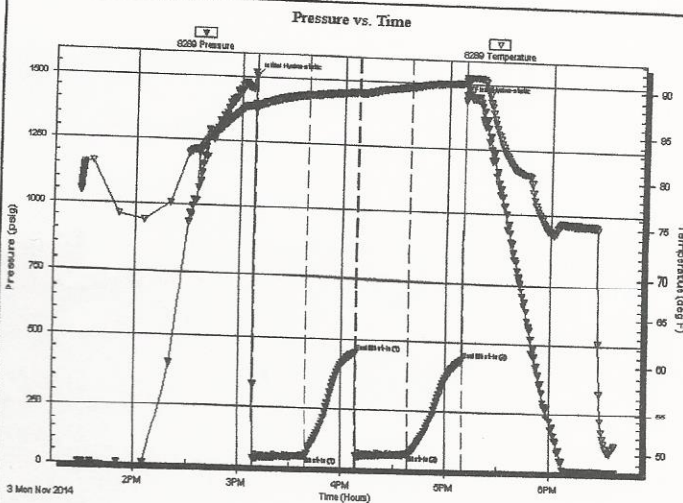
Capacity: 8000.00 psig

Last Calib.: 2014.11.03

Time On Btrr: 2014.11.03 @ 15:08:15

Time Off Btrr: 2014.11.03 @ 17:09:45

TEST COMMENT: 30-IFP- BOB in 21min.
 30-ISIP- No Blow
 30-FFP- Surface Blow Building to 9in.
 30-FSIP- No Blow



PRESSURE SUMMARY

Time (Min.)	Pressure (psig)	Temp (deg F)	Annotation
0	1507.67	87.55	Initial Hydro-static
1	29.18	87.16	Open To Flow (1)
31	41.94	88.69	Shut-In(1)
60	454.28	89.15	End Shut-In(1)
61	46.11	89.05	Open To Flow (2)
00	55.03	89.91	Shut-In(2)
122	435.41	90.53	End Shut-In(2)
122	1438.93	91.19	Final Hydro-static

Recovery

Length (ft)	Description	Volume (bbl)
85.00	GOCM 5%g 5%o 90%m	1.19
0.00	300 GIP	0.00

Gas Rates

	Choke (inches)	Pressure (psig)	Gas Rate (Mcf/d)

Serial #: 8289

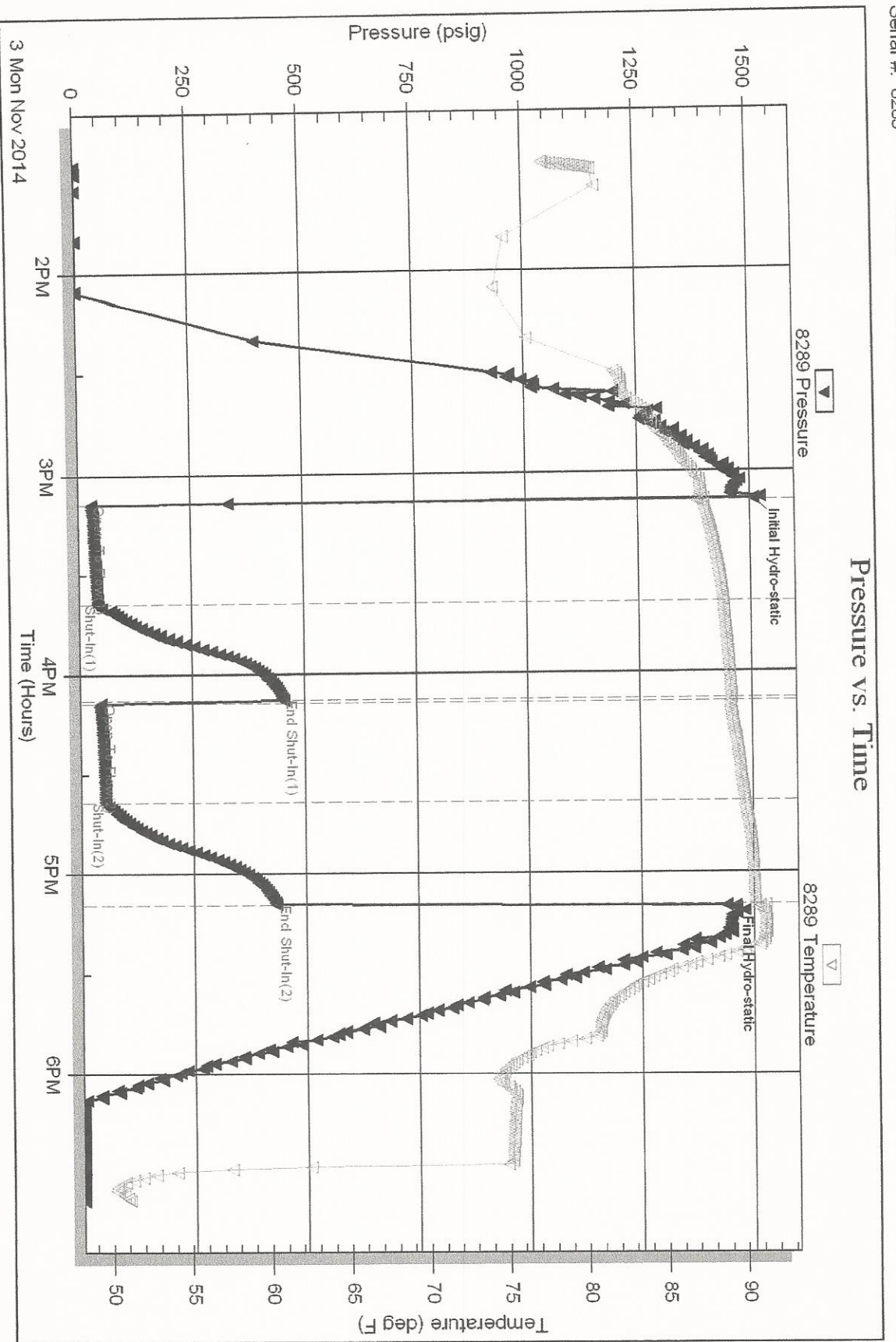
Inside

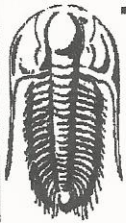
Bennett & Schulte Oil Co

Hoffman # 3

DST Test Number: 1

Pressure vs. Time





TRILOBITE TESTING, INC

DRILL STEM TEST REPORT

Bennett & Schulte Oil Co
 P.O. Box 329
 Russell KS 67665-0329
 ATTN: Bob Hopkins

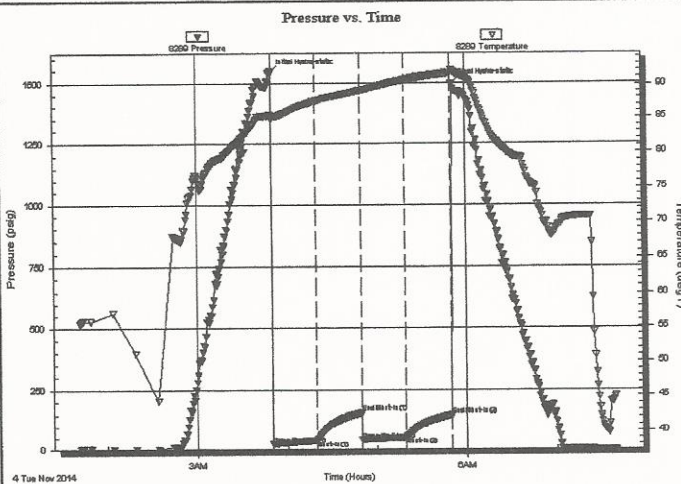
13 13s 16w Ellis
Hoffman # 3
 Job Ticket: 60614 **DST#: 2**
 Test Start: 2014.11.04 @ 01:42:00

GENERAL INFORMATION:

Formation: **LKC " F & G "**
 Deviated: **No Whipstock:** ft (KB)
 Time Tool Opened: 03:50:30
 Time Test Ended: 07:40:00
 Interval: **3196.00 ft (KB) To 3236.00 ft (KB) (TVD)**
 Total Depth: **3236.00 ft (KB) (TVD)**
 Hole Diameter: **7.88 inches** Hole Condition: Fair
 Test Type: **Conventional Bottom Hole (Reset)**
 Tester: **Jim Svaty**
 Unit No: **76**
 Reference Elevations: **1966.00 ft (KB)**
1958.00 ft (CF)
 KB to GR/CF: **8.00 ft**

Serial #: 8289 **Inside**
 Press@RunDepth: **51.18 psig @ 3200.00 ft (KB)** Capacity: **8000.00 psig**
 Start Date: **2014.11.04** End Date: **2014.11.04** Last Calib.: **2014.11.04**
 Start Time: **01:42:00** End Time: **07:40:00** Time On Btm: **2014.11.04 @ 03:50:00**
 Time Off Btm: **2014.11.04 @ 05:51:00**

TEST COMMENT: 30-IFP- BOB in 14min.
 30-ISIP- No Blow
 30-FFP- Surface Blow Building to 1 1/2in. In 12min.
 30-FSIP- No Blow



PRESSURE SUMMARY

Time (Min.)	Pressure (psig)	Temp (deg F)	Annotation
0	1544.52	85.50	Initial Hydro-static
1	22.12	85.17	Open To Flow (1)
30	39.36	87.54	Shut-In(1)
60	154.65	89.08	End Shut-In(1)
60	40.92	89.07	Open To Flow (2)
90	51.18	90.61	Shut-In(2)
121	146.22	91.57	End Shut-In(2)
121	1496.57	92.00	Final Hydro-static

Recovery

Length (ft)	Description	Volume (bbl)
65.00	MCW 45% m 55% w	0.91
10.00	OCM 5% o 95% m	0.14

* Recovery from multiple tests

Gas Rates

	Choke (inches)	Pressure (psig)	Gas Rate (Mcf/d)

Serial #: 8289

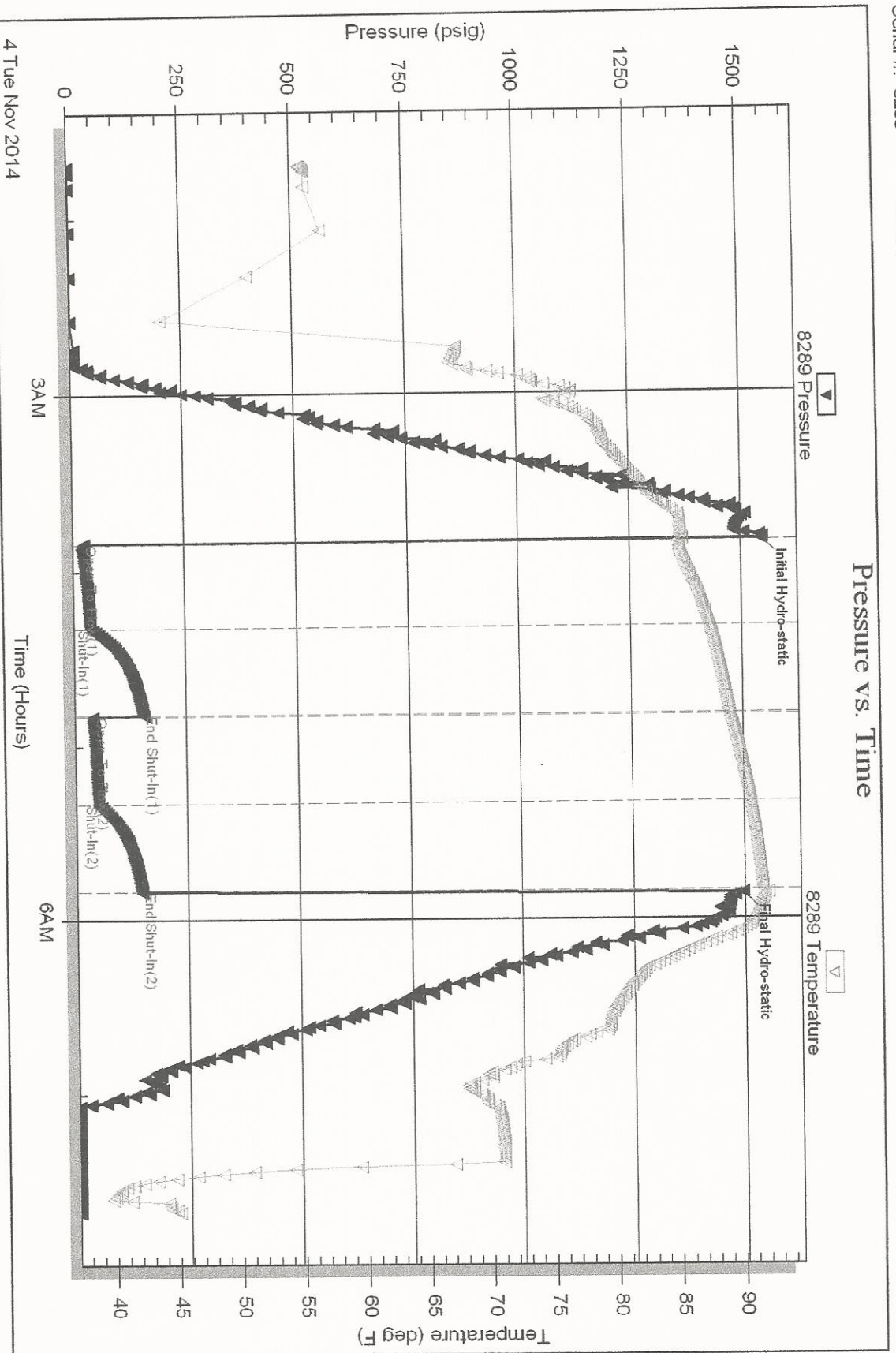
Inside

Bennett & Schulte Oil Co

Hoffman # 3

DST Test Number: 2

Pressure vs. Time



Triobite Testing, Inc

Ref. No: 60614

Printed: 2014.11.04 @ 07:46:16