



DRILL STEM TEST REPORT

Prepared For: **American Warrior, Inc.**

PO Box 399
Garden City, KS 67846

ATTN: Clint Musgrove

Donald #1-11

11-18s-10w Rice,KS.

Start Date: 2014.10.01 @ 00:01:40

End Date: 2014.10.01 @ 05:15:40

Job Ticket #: 59910 DST #: 1

Trilobite Testing, Inc
1515 Commerce Parkway Hays, KS 67601
ph: 785-625-4778 fax: 785-625-5620

Printed: 2014.10.03 @ 10:26:05



**TRILOBITE
TESTING, INC**

DRILL STEM TEST REPORT

American Warrior, Inc.

11-18s-10w Rice, KS.

PO Box 399
Garden City, KS 67846

Donald #1-11

Job Ticket: 59910

DST#: 1

ATTN: Clint Musgrove

Test Start: 2014.10.01 @ 00:01:40

GENERAL INFORMATION:

Formation: **Arbuckle**

Deviated: No Whipstock: ft (KB)

Time Tool Opened: 01:25:55

Time Test Ended: 05:15:40

Test Type: Conventional Bottom Hole (Initial)

Tester: Ryan Reynolds

Unit No: 68

Interval: 3190.00 ft (KB) To 3275.00 ft (KB) (TVD)

Reference Elevations: 1753.00 ft (KB)

Total Depth: 3275.00 ft (KB) (TVD)

1745.00 ft (CF)

Hole Diameter: 7.88 inches Hole Condition: Fair

KB to GR/CF: 8.00 ft

Serial #: 8790 Inside

Press@RunDepth: 76.77 psig @ 3193.00 ft (KB)

Capacity: 8000.00 psig

Start Date: 2014.10.01

End Date:

2014.10.01

Last Calib.: 2014.10.01

Start Time: 00:01:45

End Time:

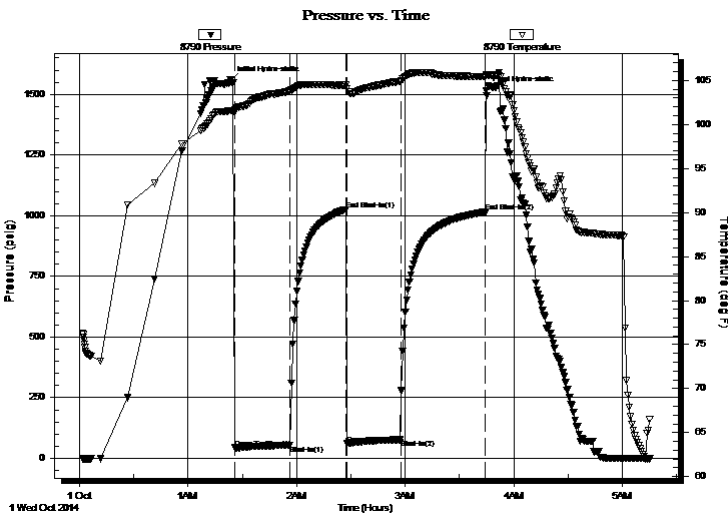
05:15:39

Time On Btm: 2014.10.01 @ 01:23:25

Time Off Btm: 2014.10.01 @ 03:44:55

TEST COMMENT: IF: Weak blow . surf. - 1"
IS: No blow
FF: Weak blow . surf. - 1"
FS: No blow

PRESSURE SUMMARY



Time (Min.)	Pressure (psig)	Temp (deg F)	Annotation
0	1558.77	101.58	Initial Hydro-static
3	41.86	101.64	Open To Flow (1)
33	53.91	103.79	Shut-In(1)
64	1026.25	104.45	End Shut-In(1)
65	59.60	104.04	Open To Flow (2)
94	76.77	104.88	Shut-In(2)
141	1015.53	105.42	End Shut-In(2)
142	1515.56	105.61	Final Hydro-static

Recovery

Length (ft)	Description	Volume (bbl)
90.00	OCM 40%o, 60%m	1.26
50.00	Clean Oil	0.70

Gas Rates

	Choke (inches)	Pressure (psig)	Gas Rate (m ³ /d)



**TRILOBITE
TESTING, INC**

DRILL STEM TEST REPORT

TOOL DIAGRAM

American Warrior, Inc.

11-18s-10w Rice, KS.

PO Box 399
Garden City, KS 67846

Donald #1-11

Job Ticket: 59910

DST#: 1

ATTN: Clint Musgrove

Test Start: 2014.10.01 @ 00:01:40

Tool Information

Drill Pipe:	Length: 3190.00 ft	Diameter: 3.80 inches	Volume: 44.75 bbl	Tool Weight: 2000.00 lb
Heavy Wt. Pipe:	Length: 0.00 ft	Diameter: inches	Volume: 0.00 bbl	Weight set on Packer: 20000.00 lb
Drill Collar:	Length: 0.00 ft	Diameter: 2.25 inches	Volume: 0.00 bbl	Weight to Pull Loose: 52000.00 lb
			<u>Total Volume: 44.75 bbl</u>	Tool Chased 6.00 ft
Drill Pipe Above KB:	20.00 ft			String Weight: Initial 45000.00 lb
Depth to Top Packer:	3190.00 ft			Final 47000.00 lb
Depth to Bottom Packer:	ft			
Interval between Packers:	85.00 ft			
Tool Length:	105.00 ft			
Number of Packers:	2	Diameter: 6.75 inches		

Tool Comments:

Tool Description

Tool Description	Length (ft)	Serial No.	Position	Depth (ft)	Accum. Lengths
Change Over Sub	1.00			3171.00	
Shut In Tool	5.00			3176.00	
Hydraulic tool	5.00			3181.00	
Packer	5.00			3186.00	20.00 Bottom Of Top Packer
Packer	4.00			3190.00	
Stubb	1.00			3191.00	
Perforations	1.00			3192.00	
Change Over Sub	1.00			3193.00	
Recorder	0.00	8790	Inside	3193.00	
Recorder	0.00	8792	Outside	3193.00	
Drill Pipe	63.00			3256.00	
Change Over Sub	1.00			3257.00	
Perforations	15.00			3272.00	
Bullnose	3.00			3275.00	85.00 Bottom Packers & Anchor

Total Tool Length: 105.00



**TRILOBITE
TESTING, INC**

DRILL STEM TEST REPORT

FLUID SUMMARY

American Warrior, Inc.

11-18s-10w Rice, KS.

PO Box 399
Garden City, KS 67846

Donald #1-11

Job Ticket: 59910

DST#: 1

ATTN: Clint Musgrove

Test Start: 2014.10.01 @ 00:01:40

Mud and Cushion Information

Mud Type: Gel Chem

Cushion Type:

Oil API:

deg API

Mud Weight: 9.00 lb/gal

Cushion Length:

ft

Water Salinity:

3200 ppm

Viscosity: 49.00 sec/qt

Cushion Volume:

bbbl

Water Loss: 8.39 in³

Gas Cushion Type:

Resistivity: ohm.m

Gas Cushion Pressure:

psig

Salinity: 3200.00 ppm

Filter Cake: 0.04 inches

Recovery Information

Recovery Table

Length ft	Description	Volume bbl
90.00	OCM 40%o, 60%m	1.262
50.00	Clean Oil	0.701

Total Length: 140.00 ft

Total Volume: 1.963 bbl

Num Fluid Samples: 0

Num Gas Bombs: 0

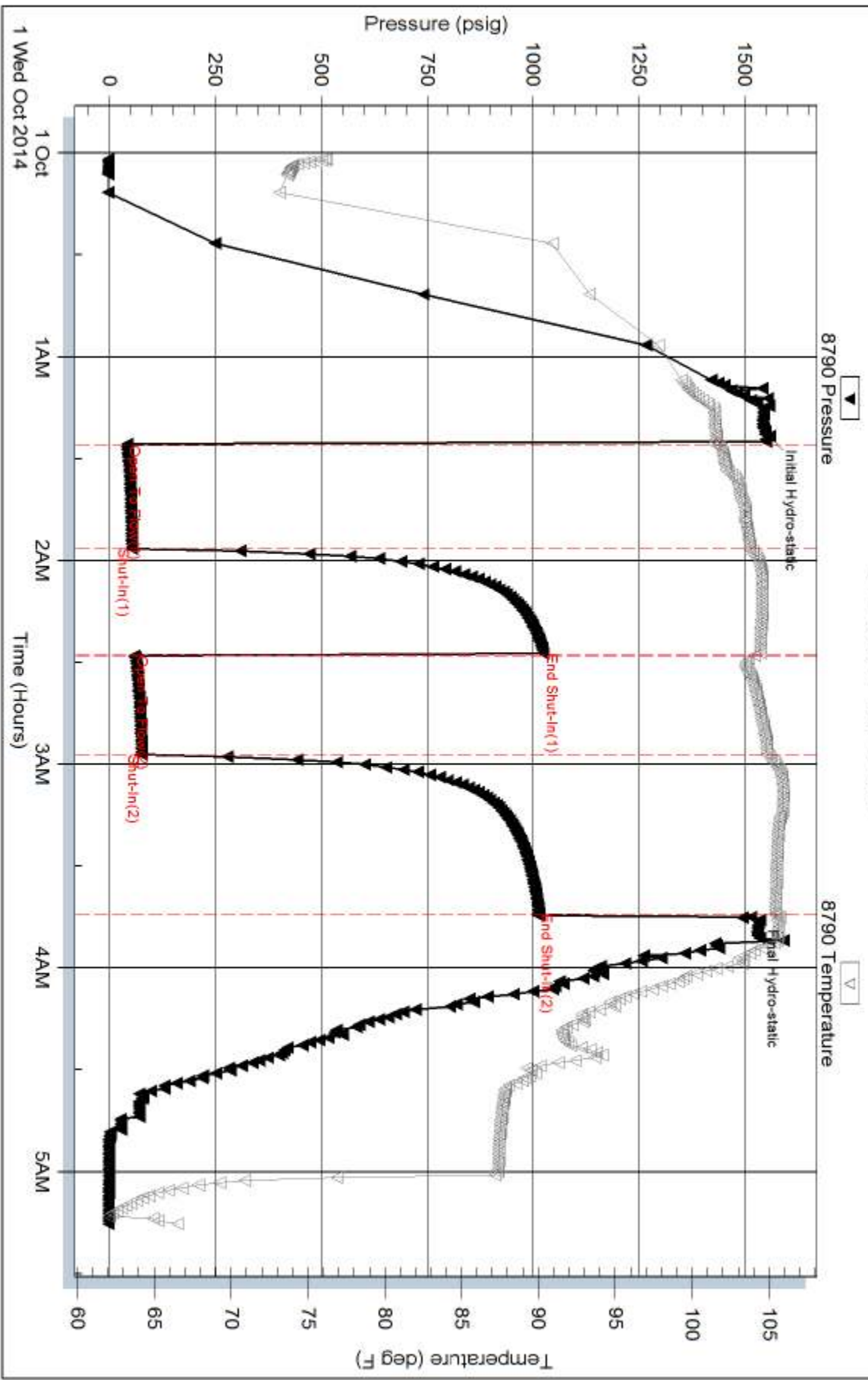
Serial #: none

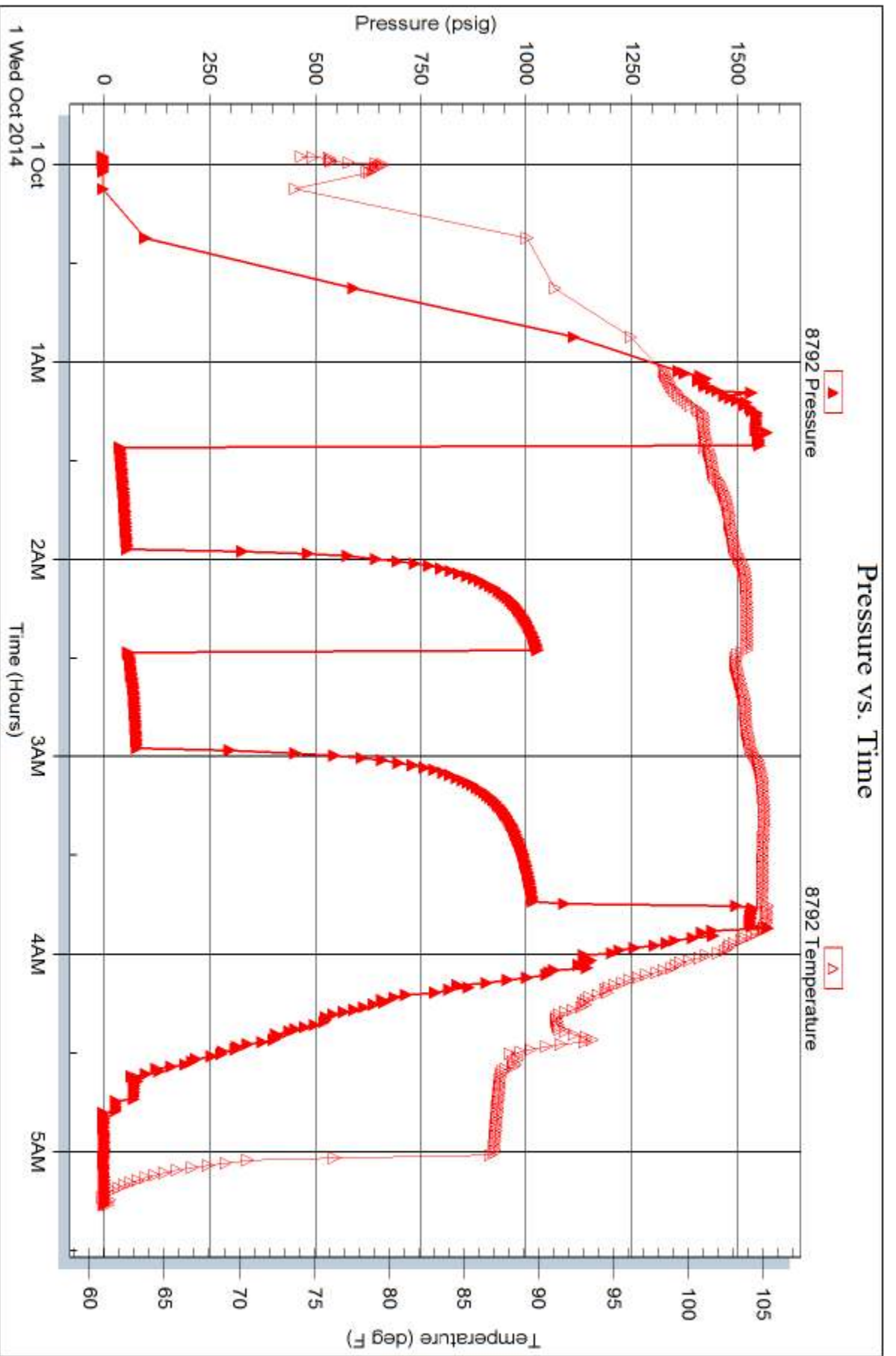
Laboratory Name:

Laboratory Location:

Recovery Comments:

Pressure vs. Time







TRILOBITE TESTING INC.

1515 Commerce Parkway • Hays, Kansas 67601

Test Ticket

NO. 59910

4/10

Well Name & No. Donald 1-11 Test No. 1 Date 9.30.14
 Company American Warrior, Inc. Elevation 1753 KB 1745 GL
 Address 3118 Cummines Rd. Garden City, KS 67846
 Co. Rep / Geo. Clint Musgrave Rig Duke 8
 Location: Sec. 11 Twp. 18s Rge. 10w Co. Rice State KS

Interval Tested 3190-3275 Zone Tested Arbuckle
 Anchor Length 85' Drill Pipe Run 3190 Mud Wt. 9.3
 Top Packer Depth 3185 Drill Collars Run Ø Vis 49
 Bottom Packer Depth 3190 Wt. Pipe Run Ø WL 8.4
 Total Depth 3275 Chlorides 3200 ppm System LCM Ø
 Blow Description IF: Weak blow, surf. - 1" IST: No blow
FF: Weak blow, surf. - 1" FSI: No blow

Rec	Feet of	%gas	%oil	%water	%mud
<u>50</u>	<u>Clean Oil</u>				
<u>90</u>	<u>OCM</u>		<u>40</u>		<u>60</u>

Rec Total 140 BHT 105 Gravity 38 API RW N/C @ N/C °F Chlorides 3200 ppm
 (A) Initial Hydrostatic 1559 Test 1150 T-On Location 2230
 (B) First Initial Flow 42 Jars _____ T-Started 0002
 (C) First Final Flow 54 Safety Joint _____ T-Open 0126
 (D) Initial Shut-In 1026 Circ Sub _____ T-Pulled 0342
 (E) Second Initial Flow 60 Hourly Standby _____ T-Out 0516
 (F) Second Final Flow 77 Mileage 150 56rt 86.80 Comments _____
 (G) Final Shut-In 1016 Sampler _____
 (H) Final Hydrostatic 1516 Straddle _____ Ruined Shale Packer _____
 Shale Packer _____ Ruined Packer _____
 Extra Packer _____ Extra Copies _____
 Initial Open 30 Extra Recorder _____ Sub Total 0
 Initial Shut-In 30 Day Standby _____ Total 1236.80
 Final Flow 30 Accessibility _____ MP/DST Disc't _____
 Final Shut-In 45 Sub Total 1236.80

Approved By _____

Our Representative Ryan Reynolds

Trilobite Testing Inc. shall not be liable for damaged of any kind of the property or personnel of the one for whom a test is made, or for any loss suffered or sustained, directly or indirectly, through the use of its equipment, or its statements or opinion concerning the results of any test, tools lost or damaged in the hole shall be paid for at cost by the party for whom the test is made.