



**TRILOBITE TESTING, INC.**

# DRILL STEM TEST REPORT

Shakespeare Oil Company, Inc.

**22-17s-33w Scott Co, KS**

202 West Street  
Salem IL, 62881

**Herron #1-22**

Job Ticket: 57297

**DST#: 1**

ATTN: Mac Armstrong

Test Start: 2014.11.11 @ 03:15:00

## GENERAL INFORMATION:

Formation: **Lansing 'A,B,C'**

Deviated: No Whipstock: ft (KB)

Time Tool Opened: 06:10:30

Time Test Ended: 11:24:00

Test Type: Conventional Bottom Hole (Initial)

Tester: Jace McKinney

Unit No: 75

**Interval: 3946.00 ft (KB) To 3972.00 ft (KB) (TVD)**

Reference Elevations: 2957.00 ft (KB)

Total Depth: 3972.00 ft (KB) (TVD)

2945.00 ft (CF)

Hole Diameter: 7.88 inches Hole Condition: Poor

KB to GR/CF: 12.00 ft

**Serial #: 8675**

**Inside**

Press@RunDepth: 730.76 psig @ 3953.00 ft (KB)

Capacity: 8000.00 psig

Start Date: 2014.11.11

End Date:

2014.11.11

Last Calib.:

2014.11.11

Start Time: 03:15:15

End Time:

11:24:00

Time On Btm:

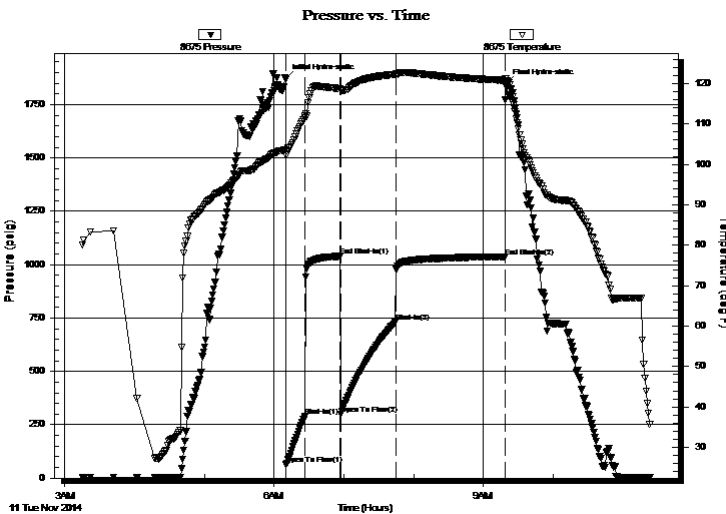
2014.11.11 @ 06:10:15

Time Off Btm:

2014.11.11 @ 09:20:00

**TEST COMMENT:** B.O.B. in 2 1/2 min.  
Bled off for 5 min, No return blow  
B.O.B. in 3 min.  
Bled off for 5 min, No return blow

## PRESSURE SUMMARY



Time (Min.)	Pressure (psig)	Temp (deg F)	Annotation
0	1869.52	103.61	Initial Hydro-static
1	65.05	102.31	Open To Flow (1)
17	289.94	111.93	Shut-In(1)
47	1039.29	118.72	End Shut-In(1)
47	300.78	118.45	Open To Flow (2)
95	730.76	122.26	Shut-In(2)
189	1037.62	120.82	End Shut-In(2)
190	1847.62	120.69	Final Hydro-static

## Recovery

Length (ft)	Description	Volume (bbl)
191.00	w cm 20%W 80%M	2.68
315.00	w cm 50%W 50%M	4.42
189.00	mcw 20%M 80%W	2.65
1070.00	100%W	15.01

## Gas Rates

	Choke (inches)	Pressure (psig)	Gas Rate (Mcf/d)



**TRILOBITE  
TESTING, INC**

# DRILL STEM TEST REPORT

**FLUID SUMMARY**

Shakespeare Oil Company, Inc.

**22-17s-33w Scott Co, KS**

202 West Street  
Salem IL, 62881

**Herron #1-22**

Job Ticket: 57297

**DST#: 1**

ATTN: Mac Armstrong

Test Start: 2014.11.11 @ 03:15:00

## Mud and Cushion Information

Mud Type: Gel Chem

Cushion Type:

Oil API:

deg API

Mud Weight: 9.00 lb/gal

Cushion Length:

ft

Water Salinity:

34000 ppm

Viscosity: 54.00 sec/qt

Cushion Volume:

bbbl

Water Loss: 7.19 in<sup>3</sup>

Gas Cushion Type:

Resistivity: ohm.m

Gas Cushion Pressure:

psig

Salinity: 2100.00 ppm

Filter Cake: 1.00 inches

## Recovery Information

Recovery Table

Length ft	Description	Volume bbbl
191.00	w cm 20%W 80%M	2.679
315.00	w cm 50%W 50%M	4.419
189.00	mcw 20%M 80%W	2.651
1070.00	100%W	15.009

Total Length: 1765.00 ft      Total Volume: 24.758 bbl

Num Fluid Samples: 0

Num Gas Bombs: 0

Serial #:

Laboratory Name:

Laboratory Location:

Recovery Comments: RW: .60 @ 20 F

### Pressure vs. Time

