



**TRILOBITE
TESTING, INC.**

DRILL STEM TEST REPORT

Shelby Resources, LLC.

15/18s/14w/Barton

2717 Canal BLVD
Suite C
Hays Ks, 67601
ATTN: Jeremy Schwartz

Wondra-Stoss #1-15

Job Ticket: 60407 **DST#: 1**

Test Start: 2014.11.16 @ 11:40:00

GENERAL INFORMATION:

Formation: **Lansing "A-B"**

Deviated: No Whipstock: ft (KB)

Time Tool Opened: 12:57:30

Time Test Ended: 18:45:00

Test Type: Conventional Bottom Hole (Initial)

Tester: Shane Konzem

Unit No: S#/30/Great Bend

Interval: 3179.00 ft (KB) To 3222.00 ft (KB) (TVD)

Reference Elevations: 3222.00 ft (KB)

Total Depth: 3222.00 ft (KB) (TVD)

3179.00 ft (CF)

Hole Diameter: 7.88 inches Hole Condition: Fair

KB to GR/CF: 43.00 ft

Serial #: 6806 Inside

Press @ Run Depth: 125.26 psig @ 3218.00 ft (KB)

Capacity: 8000.00 psig

Start Date: 2014.11.16

End Date: 2014.11.16

Last Calib.: 2014.11.16

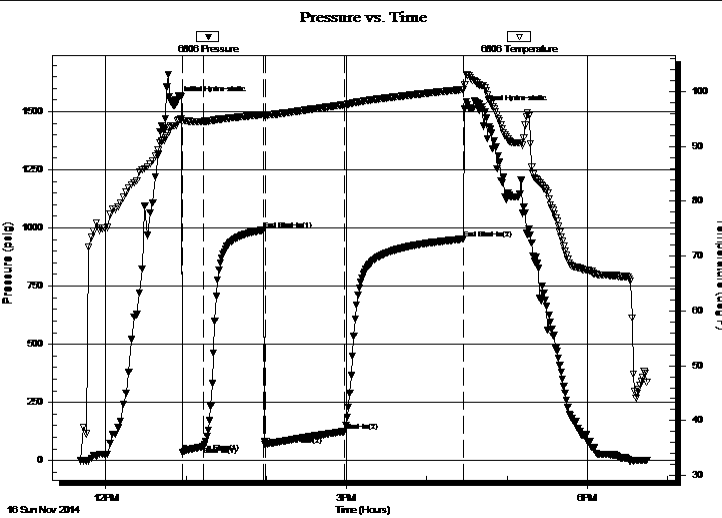
Start Time: 11:41:00

End Time: 18:45:00

Time On Btm: 2014.11.16 @ 12:53:30

Time Off Btm: 2014.11.16 @ 16:39:00

TEST COMMENT: 1st Open/ 15 Minutes. Fair blow built to 10 inches into bucket of water.
1st shut In/ 45 Minutes. Weak surface blow back.
2nd Open/ 60 Minutes. Good blow built to bottom of 5 gallon bucket in 17 minutes and 20 seconds.
2nd Shut In/ 90 Minutes. Weak surface blow back.



PRESSURE SUMMARY

Time (Min.)	Pressure (psig)	Temp (deg F)	Annotation
0	1548.00	94.64	Initial Hydro-static
4	37.27	94.74	Open To Flow (1)
19	60.26	94.60	Shut-In(1)
64	991.28	95.86	End Shut-In(1)
66	67.50	95.71	Open To Flow (2)
125	125.26	97.64	Shut-In(2)
214	952.81	100.41	End Shut-In(2)
226	1506.48	101.24	Final Hydro-static

Recovery

Length (ft)	Description	Volume (bbl)
0.00	63 feet Gas in pipe.	0.00
189.00	Gas, oil, mud cut w ater	0.93
0.00	2.5% gas 2.5% Oil 25% Mud 70% w ater	0.00
63.00	Muddy w ater	0.31
0.00	15% mud, 85% w ater	0.00
0.00	Resist recov. .21 at 40 degrees	0.00

Gas Rates

	Choke (inches)	Pressure (psig)	Gas Rate (Mcf/d)



**TRILOBITE
TESTING, INC.**

DRILL STEM TEST REPORT

Shelby Resources, LLC.
2717 Canal BLVD
Suite C
Hays Ks, 67601
ATTN: Jeremy Schwartz

15/18s/14w/Barton

Wondra-Stoss #1-15

Job Ticket: 60407

DST#: 1

Test Start: 2014.11.16 @ 11:40:00

GENERAL INFORMATION:

Formation: **Lansing "A-B"**

Deviated: No Whipstock: ft (KB)

Time Tool Opened: 12:57:30

Time Test Ended: 18:45:00

Test Type: Conventional Bottom Hole (Initial)

Tester: Shane Konzem

Unit No: S#/30/Great Bend

Interval: 3179.00 ft (KB) To 3222.00 ft (KB) (TVD)

Reference Elevations: 3222.00 ft (KB)

Total Depth: 3222.00 ft (KB) (TVD)

3179.00 ft (CF)

Hole Diameter: 7.88 inches Hole Condition: Fair

KB to GR/CF: 43.00 ft

Serial #: 8159 Outside

Press @ Run Depth: 953.83 psig @ 3219.00 ft (KB)

Capacity: 8000.00 psig

Start Date: 2014.11.16

End Date: 2014.11.16

Last Calib.: 2014.11.16

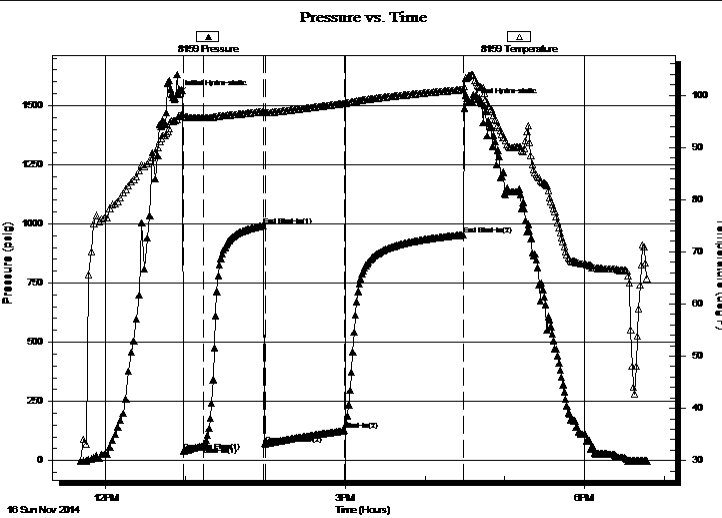
Start Time: 11:41:00

End Time: 18:46:30

Time On Btm: 2014.11.16 @ 12:54:30

Time Off Btm: 2014.11.16 @ 16:33:00

TEST COMMENT: 1st Open/ 15 Minutes. Fair blow built to 10 inches into bucket of water.
1st shut In/ 45 Minutes. Weak surface blow back.
2nd Open/ 60 Minutes. Good blow built to bottom of 5 gallon bucket in 17 minutes and 20 seconds.
2nd Shut In/ 90 Minutes. Weak surface blow back.



PRESSURE SUMMARY

Time (Min.)	Pressure (psig)	Temp (deg F)	Annotation
0	1548.10	95.97	Initial Hydro-static
4	38.44	95.92	Open To Flow (1)
19	61.38	95.65	Shut-In(1)
64	992.29	96.86	End Shut-In(1)
66	69.50	96.63	Open To Flow (2)
125	127.68	98.41	Shut-In(2)
214	953.83	101.07	End Shut-In(2)
219	1511.46	103.70	Final Hydro-static

Recovery

Length (ft)	Description	Volume (bbl)
0.00	63 feet Gas in pipe.	0.00
189.00	Gas, oil, mud cut w ater	0.93
0.00	2.5% gas 2.5% Oil 25% Mud 70% w ater	0.00
63.00	Muddy w ater	0.31
0.00	15% mud, 85% w ater	0.00
0.00	Resist recov. .21 at 40 degrees	0.00

Gas Rates

Choke (inches)	Pressure (psig)	Gas Rate (Mcf/d)



**TRILOBITE
TESTING, INC.**

DRILL STEM TEST REPORT

FLUID SUMMARY

Shelby Resources, LLC.

15/18s/14w/Barton

2717 Canal BLVD

Wondra-Stoss #1-15

Suite C

Job Ticket: 60407

DST#: 1

Hays Ks, 67601

ATTN: Jeremy Schwartz

Test Start: 2014.11.16 @ 11:40:00

Mud and Cushion Information

Mud Type: Gel Chem

Cushion Type:

Oil API:

deg API

Mud Weight: 9.00 lb/gal

Cushion Length:

ft

Water Salinity:

26000 ppm

Viscosity: 58.00 sec/qt

Cushion Volume:

bbbl

Water Loss: 7.99 in³

Gas Cushion Type:

Resistivity: ohm.m

Gas Cushion Pressure:

psig

Salinity: 4700.00 ppm

Filter Cake: 2.00 inches

Recovery Information

Recovery Table

Length ft	Description	Volume bbl
0.00	63 feet Gas in pipe.	0.000
189.00	Gas, oil, mud cut w ater	0.929
0.00	2.5% gas 2.5% Oil 25% Mud 70% w ater	0.000
63.00	Muddy w ater	0.310
0.00	15% mud, 85% w ater	0.000
0.00	Resist recov. .21 at 40 degrees	0.000

Total Length: 252.00 ft

Total Volume: 1.239 bbl

Num Fluid Samples: 0

Num Gas Bombs: 0

Serial #:

Laboratory Name:

Laboratory Location:

Recovery Comments:

