



**TRILOBITE TESTING, INC**

# DRILL STEM TEST REPORT

Shelby Resources, LLC.

**15/18s/14w/Barton**

2717 Canal BLVD  
Suite C  
Hays Ks, 67601  
ATTN: Jeremy Schwartz

**Wondra-Stoss #1-15**

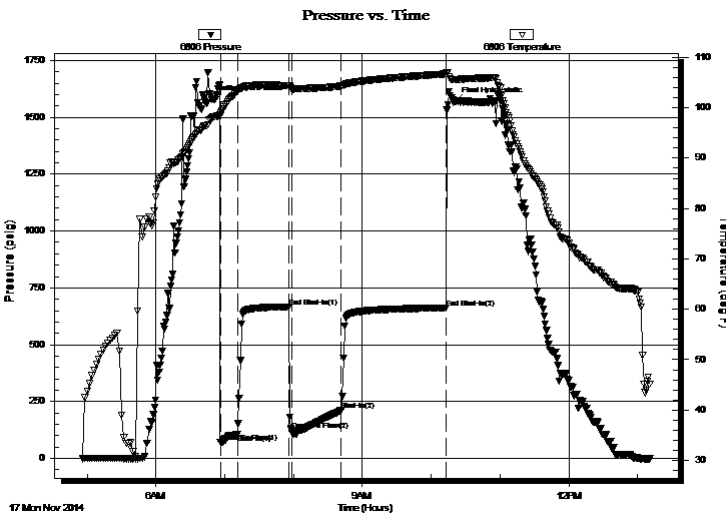
Job Ticket: 60408 **DST#: 2**  
Test Start: 2014.11.17 @ 04:55:00

## GENERAL INFORMATION:

Formation: **Lansing "H"**  
 Deviated: No Whipstock: ft (KB)  
 Time Tool Opened: 06:56:00  
 Time Test Ended: 13:11:00  
 Interval: **3305.00 ft (KB) To 3330.00 ft (KB) (TVD)**  
 Total Depth: 3330.00 ft (KB) (TVD)  
 Hole Diameter: 7.88 inches Hole Condition: Fair  
 Test Type: Conventional Bottom Hole (Initial)  
 Tester: Shane Konzem  
 Unit No: S3/30/Great Bend  
 Reference Elevations: 3222.00 ft (KB)  
 3179.00 ft (CF)  
 KB to GR/CF: 43.00 ft

**Serial #: 6806 Inside**  
 Press@RunDepth: 212.31 psig @ 3326.00 ft (KB) Capacity: 8000.00 psig  
 Start Date: 2014.11.17 End Date: 2014.11.17 Last Calib.: 2014.11.17  
 Start Time: 04:56:00 End Time: 13:11:00 Time On Btm: 2014.11.17 @ 06:50:30  
 Time Off Btm: 2014.11.17 @ 10:20:30

**TEST COMMENT:** 1st Open/ 15 Minutes. Strong blow built to bottom of 5 gallon bucket in 1 minutes.  
 1st Shut In/ 45 Minutes. Blow back built to 6 inches into deisel.  
 2nd Open/ 45 Minutes. Strong blow built to bottom of 5 gallon bucket in 1 minutes. Gas to surface in 15 minutes. Gas w as unmeasurable.



## PRESSURE SUMMARY

Time (Min.)	Pressure (psig)	Temp (deg F)	Annotation
0	1578.89	98.19	Initial Hydro-static
6	70.16	98.41	Open To Flow (1)
21	107.34	103.25	Shut-In(1)
66	667.56	104.43	End Shut-In(1)
68	124.14	103.82	Open To Flow (2)
111	212.31	104.30	Shut-In(2)
203	662.19	106.71	End Shut-In(2)
210	1567.71	105.56	Final Hydro-static

## Recovery

Length (ft)	Description	Volume (bbl)
640.00	100% Clean gassy oil	4.79

## Gas Rates

	Choke (inches)	Pressure (psig)	Gas Rate (Mcf/d)



**TRILOBITE  
TESTING, INC**

# DRILL STEM TEST REPORT

## FLUID SUMMARY

Shelby Resources, LLC.

**15/18s/14w/Barton**

2717 Canal BLVD  
Suite C  
Hays Ks, 67601  
ATTN: Jeremy Schwartz

**Wondra-Stoss #1-15**

Job Ticket: 60408

**DST#: 2**

Test Start: 2014.11.17 @ 04:55:00

### Mud and Cushion Information

Mud Type: Gel Chem

Cushion Type:

Oil API:

40 deg API

Mud Weight: 9.00 lb/gal

Cushion Length:

ft

Water Salinity:

ppm

Viscosity: 58.00 sec/qt

Cushion Volume:

bbbl

Water Loss: 7.99 in<sup>3</sup>

Gas Cushion Type:

Resistivity: ohm.m

Gas Cushion Pressure:

psig

Salinity: 4700.00 ppm

Filter Cake: 2.00 inches

### Recovery Information

Recovery Table

Length ft	Description	Volume bbl
640.00	100% Clean gassy oil	4.790

Total Length: 640.00 ft      Total Volume: 4.790 bbl

Num Fluid Samples: 0

Num Gas Bombs: 0

Serial #:

Laboratory Name:

Laboratory Location:

Recovery Comments:

