



**TRILOBITE
TESTING, INC**

DRILL STEM TEST REPORT

Shelby Resources, LLC.

15/18s/14w/Barton

2717 Canal BLVD
Suite C
Hays Ks, 67601
ATTN: Jeremy Schwartz

Wondra-Stoss #1-15

Job Ticket: 60411 **DST#: 5**
Test Start: 2014.11.19 @ 05:10:00

GENERAL INFORMATION:

Formation: **Arbuckle**
 Deviated: No Whipstock: ft (KB)
 Time Tool Opened: 07:20:30
 Time Test Ended: 12:30:30
 Interval: **3428.00 ft (KB) To 3435.00 ft (KB) (TVD)**
 Total Depth: 3435.00 ft (KB) (TVD)
 Hole Diameter: 7.88 inches Hole Condition: Good
 Test Type: Conventional Bottom Hole (Initial)
 Tester: Shane Konzem
 Unit No: S3/30/Great Bend
 Reference Elevations: 3222.00 ft (KB)
 3179.00 ft (CF)
 KB to GR/CF: 43.00 ft

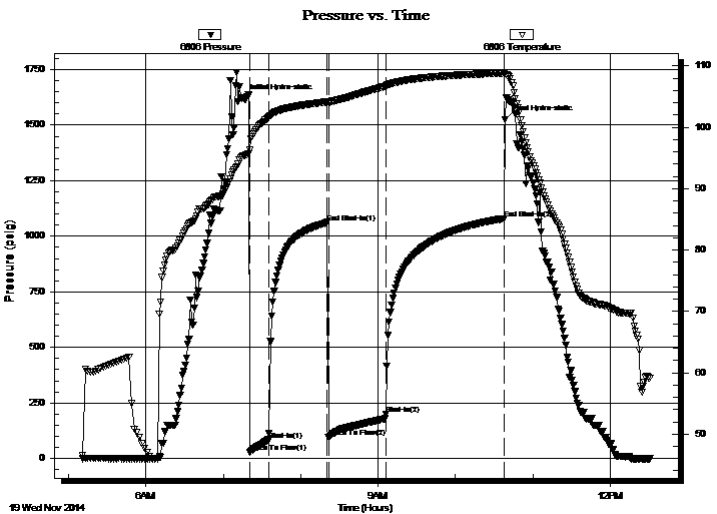
Serial #: 6806

Inside

Press@RunDepth: 200.03 psig @ 3431.00 ft (KB) Capacity: 8000.00 psig
 Start Date: 2014.11.19 End Date: 2014.11.19 Last Calib.: 2014.11.19
 Start Time: 05:11:00 End Time: 12:30:30 Time On Btm: 2014.11.19 @ 07:15:30
 Time Off Btm: 2014.11.19 @ 10:38:30

TEST COMMENT: 1st Open/ 15 Minutes. Good blow built to bottom of 5 gallon bucket in 10 minutes.
 1st Shut In/ 45 Minutes. Weak surface blow back.
 2nd Open/ 45 Minutes. Good blow built to bottom of 5 gallon bucket in 13 minutes.
 2nd Shut In/ 90 Minutes. Weak surface blow back.

PRESSURE SUMMARY



Time (Min.)	Pressure (psig)	Temp (deg F)	Annotation
0	1618.87	95.32	Initial Hydro-static
5	27.53	96.27	Open To Flow (1)
20	84.61	101.58	Shut-In(1)
65	1061.89	104.14	End Shut-In(1)
66	94.96	104.02	Open To Flow (2)
111	200.03	106.71	Shut-In(2)
202	1079.65	108.83	End Shut-In(2)
203	1524.43	108.95	Final Hydro-static

Recovery

Length (ft)	Description	Volume (bbl)
472.00	100% Clean Oil	3.90
63.00	Muddy cut oil	0.88
0.00	20% mud, 80% oil	0.00

Gas Rates

	Choke (inches)	Pressure (psig)	Gas Rate (Mcf/d)



**TRILOBITE
TESTING, INC**

DRILL STEM TEST REPORT

FLUID SUMMARY

Shelby Resources, LLC.

15/18s/14w/Barton

2717 Canal BLVD
Suite C
Hays Ks, 67601
ATTN: Jeremy Schwartz

Wondra-Stoss #1-15

Job Ticket: 60411

DST#: 5

Test Start: 2014.11.19 @ 05:10:00

Mud and Cushion Information

Mud Type: Gel Chem
Mud Weight: 9.00 lb/gal
Viscosity: 49.00 sec/qt
Water Loss: 7.20 in³
Resistivity: ohm.m
Salinity: 4400.00 ppm
Filter Cake: 2.00 inches

Cushion Type:
Cushion Length: ft
Cushion Volume: bbl
Gas Cushion Type:
Gas Cushion Pressure: psig

Oil API: 41 deg API
Water Salinity: ppm

Recovery Information

Recovery Table

Length ft	Description	Volume bbl
472.00	100% Clean Oil	3.902
63.00	Muddy cut oil	0.884
0.00	20% mud, 80% oil	0.000

Total Length: 535.00 ft Total Volume: 4.786 bbl

Num Fluid Samples: 0

Num Gas Bombs: 0

Serial #:

Laboratory Name:

Laboratory Location:

Recovery Comments:

