



DRILL STEM TEST REPORT

Prepared For: **Shelby Resources, LLC.**

2717 Canal BLVD
Suite C
Hays Ks, 67601

ATTN: Jeremy Schwartz

Wondra-Stoss #1-15

15/18s/14w/Barton

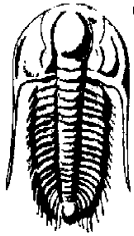
Start Date: 2014.11.19 @ 21:10:00

End Date: 2014.11.20 @ 05:54:30

Job Ticket #: 60412 DST #: 6

Trilobite Testing, Inc
1515 Commerce Parkway Hays, KS 67601
ph: 785-625-4778 fax: 785-625-5620

Printed: 2014.11.20 @ 07:08:56



**TRILOBITE
TESTING, INC.**

DRILL STEM TEST REPORT

TOOL DIAGRAM

Shelby Resources, LLC.

15/18s/14w/Barton

2717 Canal BLVD

Wondra-Stoss #1-15

Suite C

Job Ticket: 60412

DST#: 6

Hays Ks, 67601

ATTN: Jeremy Schwartz

Test Start: 2014.11.19 @ 21:10:00

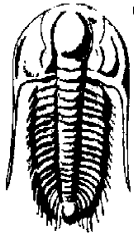
Tool Information

Drill Pipe:	Length: 3123.00 ft	Diameter: 3.80 inches	Volume: 43.81 bbl	Tool Weight: 2000.00 lb
Heavy Wt. Pipe:	Length: 298.51 ft	Diameter: 0.00 inches	Volume: 0.00 bbl	Weight set on Packer: 20000.00 lb
Drill Collar:	Length: 0.00 ft	Diameter: 2.25 inches	Volume: 0.00 bbl	Weight to Pull Loose: 78000.00 lb
			<u>Total Volume: 43.81 bbl</u>	Tool Chased 0.00 ft
Drill Pipe Above KB:	9.51 ft			String Weight: Initial 68000.00 lb
Depth to Top Packer:	3435.00 ft			Final 71000.00 lb
Depth to Bottom Packer:	ft			
Interval between Packers:	9.00 ft			
Tool Length:	32.00 ft			
Number of Packers:	1	Diameter: 6.75 inches		

Tool Comments:

Tool Description

Tool Description	Length (ft)	Serial No.	Position	Depth (ft)	Accum. Lengths
Shut-In Tool	5.00			3417.00	
Hydraulic tool	5.00			3422.00	
Jars	6.00			3428.00	
Safety Joint	2.00			3430.00	
Packer	5.00			3435.00	23.00 Bottom Of Top Packer
Anchor	4.00			3439.00	
Recorder	1.00	6806	Inside	3440.00	
Recorder	1.00	8159	Outside	3441.00	
Bull Plug	3.00			3444.00	9.00 Anchor Tool
Total Tool Length:	32.00				



**TRILOBITE
TESTING, INC.**

DRILL STEM TEST REPORT

FLUID SUMMARY

Shelby Resources, LLC.

15/18s/14w/Barton

2717 Canal BLVD

Wondra-Stoss #1-15

Suite C

Job Ticket: 60412

DST#: 6

Hays Ks, 67601

ATTN: Jeremy Schwartz

Test Start: 2014.11.19 @ 21:10:00

Mud and Cushion Information

Mud Type: Gel Chem

Cushion Type:

Oil API:

41 deg API

Mud Weight: 9.00 lb/gal

Cushion Length:

ft

Water Salinity:

33000 ppm

Viscosity: 68.00 sec/qt

Cushion Volume:

bbbl

Water Loss: 8.00 in³

Gas Cushion Type:

Resistivity: ohm.m

Gas Cushion Pressure:

psig

Salinity: 4600.00 ppm

Filter Cake: 2.00 inches

Recovery Information

Recovery Table

Length ft	Description	Volume bbl
0.00	189 feet gas in pipe.	0.000
30.00	100% Clean Oil	0.000
63.00	Mud, Oil, cut Water	0.000
0.00	20% mud, 30% Oil, 50% water	0.000
1607.00	Reversed out of pipe	19.659
0.00	resist recov. .22 at 40 degrees	0.000

Total Length: 1700.00 ft

Total Volume: 19.659 bbl

Num Fluid Samples: 0

Num Gas Bombs: 0

Serial #:

Laboratory Name:

Laboratory Location:

Recovery Comments:

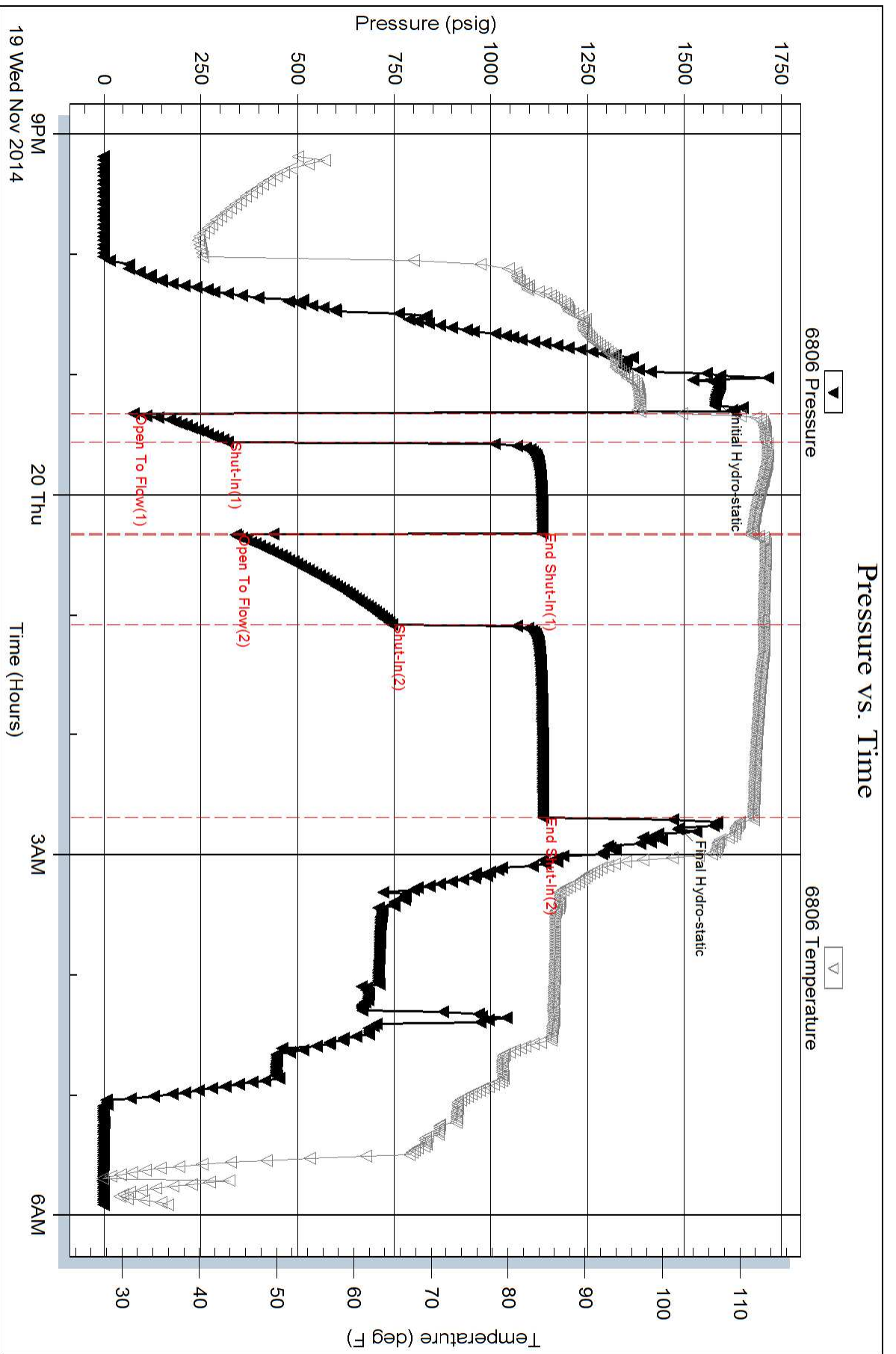
Serial #: 6806

Inside

Shelby Resources, LLC.

Wondra-Stoss #1-15

DST Test Number: 6



Pressure vs. Time

