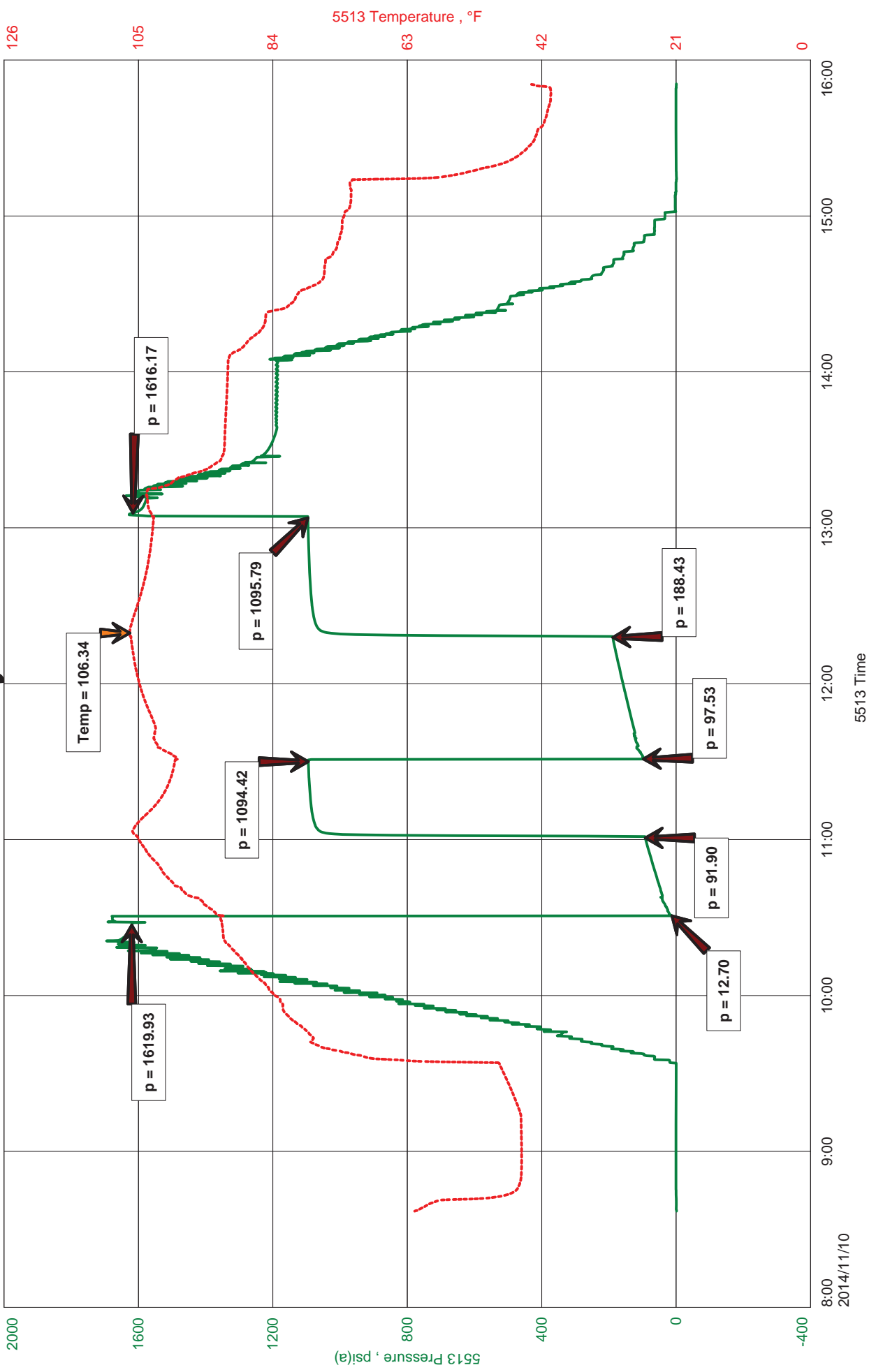


RJM
DST #3 Arbuckle 3338-3382
Start Test Date: 2014/11/10
Final Test Date: 2014/11/10

Patsy #1
Formation: Arbuckle
Pool: Wildcat
Job Number: K199

Patsy #1





JASON MCLEMORE

CELL # 620-617-0527

General Information

Company Name	RJM	Chris Hoffman	Job Number	K199
Contact		Patsy #1	Representative	Jason McLemore
Well Name		DST #3 Arbuckle 3338-3382	Well Operator	RJM
Unique Well ID		12-16s-13w-Barton	Prepared By	Jason McLemore
Surface Location		Wildcat	Qualified By	Wyatt Urban
Field		Vertical	Test Unit	6
Well Type				

Test Information

Test Type	Drill Stem Test	Representative	Jason McLemore
Formation	Arbuckle	Well Operator	RJM
Well Fluid Type	01 Oil	Report Date	2014/11/10
Test Purpose (AEUB)	Initial Test	Prepared By	Jason McLemore
Start Test Date	2014/11/10	Start Test Time	08:37:00
Final Test Date	2014/11/10	Final Test Time	15:52:00

Test Results

RECOVERED:

350	Free Oil
85	Mud Cut Oil, 60% Oil, 40% Mud
435	TOTAL FLUID

GRAVITY: 38



DIAMOND TESTING
P.O. Box 157
HOISINGTON, KANSAS 67544
(800) 542-7313
DRILL-STEM TEST TICKET
FILE: patsy1dst3

TIME ON: 8:37 AM
TIME OFF: 3:52 PM

Company RJM Lease & Well No. Patsy #1
Contractor Southwind #2 Charge to RJM
Elevation KB 1927 Formation Arbuckle Effective Pay _____ Ft. Ticket No. K199
Date 11-10-14 Sec. 12 Twp. 16 S Range 13 W County Barton State KANSAS
Test Approved By Wyatt Diamond Representative Jason McLemore

Formation Test No. 3 Interval Tested from 3338 ft. to 3382 ft. Total Depth 3382 ft.
Packer Depth 3333 ft. Size 6 3/4 in. Packer depth _____ ft. Size 6 3/4 in.
Packer Depth 3338 ft. Size 6 3/4 in. Packer depth _____ ft. Size 6 3/4 in.

Depth of Selective Zone Set _____

Top Recorder Depth (Inside) 3319 ft. Recorder Number 5513 Cap. 5000 P.S.I.
Bottom Recorder Depth (Outside) 3320 ft. Recorder Number 5588 Cap. 6000 P.S.I.
Below Straddle Recorder Depth _____ ft. Recorder Number _____ Cap. _____ P.S.I.

Mud Type Chemical Viscosity 51 Drill Collar Length 0 ft. I.D. 2 1/4 in.
Weight 9.3 Water Loss 9.6 cc. Weight Pipe Length 0 ft. I.D. 2 7/8 in.
Chlorides 8000 P.P.M. Drill Pipe Length 3305 ft. I.D. 3 1/2 in.
Jars: Make STERLING Serial Number 6 Test Tool Length 33 ft. Tool Size 3 1/2-IF in.
Did Well Flow? No Reversed Out No Anchor Length 44 ft. Size 4 1/2-FH in.
Main Hole Size 7 7/8 Tool Joint Size 4 1/2 XH in. 31' DP In Anchor Surface Choke Size 1 in. Bottom Choke Size 5/8 in.

Blow: 1st Open: Fair Blow, BOB in 9 Min., Blowback Built to 1/2"
2nd Open: Fair Blow, BOB in 13 Min., No Blowback

Recovered 350 ft. of Free Oil
Recovered 85 ft. of Mud Cut Oil, 60% Oil, 40% Mud
Recovered 435 ft. of TOTAL FLUID

Recovered _____ ft. of _____	Price Job
Recovered _____ ft. of <u>GRAVITY: 38</u>	Other Charges
Recovered _____ ft. of _____	Insurance
Remarks: _____	Total

Time Set Packer(s) 10:33 AM A.M. P.M. Time Started Off Bottom 1:03 PM A.M. P.M. Maximum Temperature 106

Initial Hydrostatic Pressure..... (A) 1620 P.S.I.
Initial Flow Period..... Minutes 30 (B) 13 P.S.I. to (C) 92 P.S.I.
Initial Closed In Period..... Minutes 30 (D) 1094 P.S.I.
Final Flow Period..... Minutes 45 (E) 98 P.S.I. to (F) 188 P.S.I.
Final Closed In Period..... Minutes 45 (G) 1096 P.S.I.
Final Hydrostatic Pressure..... (H) 1616 P.S.I.

Diamond Testing shall not be liable for damages of any kind to the property or personnel of the one for whom a test is made or for any loss suffered or sustained, directly or indirectly, through the use of its equipment, or its statement or opinion concerning the result of any test. Tools lost or damaged in the hole shall be paid for at cost by the party for whom the test is made.