



DRILL STEM TEST REPORT

Prepared For: **American Warrior Inc.**

PO Box 399
Garden City, KS 67846

ATTN: Wyatt Urban

Hoelscher Unit #1-11

11-18s-10w Rice,KS

Start Date: 2014.10.28 @ 22:11:00

End Date: 2014.10.29 @ 04:57:30

Job Ticket #: 60390 DST #: 1

Trilobite Testing, Inc
1515 Commerce Parkway Hays, KS 67601
ph: 785-625-4778 fax: 785-625-5620

Printed: 2014.10.30 @ 13:54:04



TRILOBITE TESTING, INC

DRILL STEM TEST REPORT

American Warrior Inc.
 PO Box 399
 Garden City, KS 67846
 ATTN: Wyatt Urban

11-18s-10w Rice, KS
Hoelscher Unit #1-11
 Job Ticket: 60390 **DST#: 1**
 Test Start: 2014.10.28 @ 22:11:00

GENERAL INFORMATION:

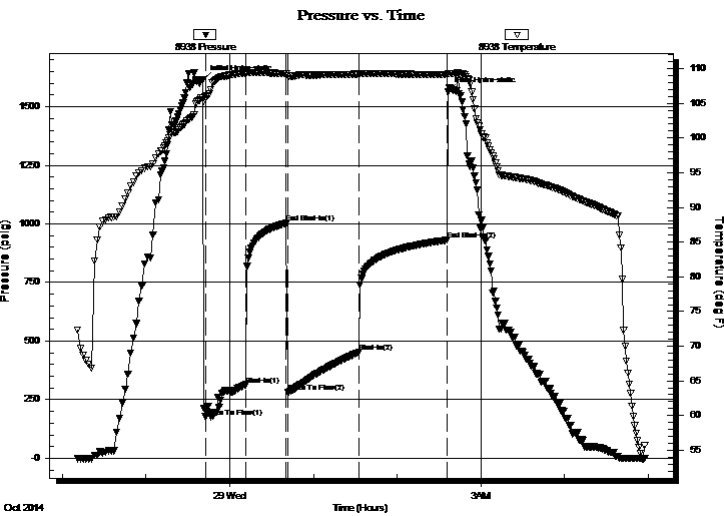
Formation: **Arbuckle**
 Deviated: No Whipstock: ft (KB)
 Time Tool Opened: 23:42:30
 Time Test Ended: 04:57:30
 Interval: **3194.00 ft (KB) To 3280.00 ft (KB) (TVD)**
 Total Depth: 3280.00 ft (KB) (TVD)
 Hole Diameter: inches Hole Condition: Poor
 Test Type: Conventional Bottom Hole (Initial)
 Tester: Gene Budig
 Unit No: S4
 Reference Elevations: 1780.00 ft (KB)
 1772.00 ft (CF)
 KB to GR/CF: 8.00 ft

Serial #: 8938

Outside

Press@RunDepth: 453.03 psig @ 3277.27 ft (KB) Capacity: 8000.00 psig
 Start Date: 2014.10.28 End Date: 2014.10.29 Last Calib.: 2014.10.28
 Start Time: 22:11:00 End Time: 04:57:30 Time On Btm: 2014.10.28 @ 23:41:00
 Time Off Btm: 2014.10.29 @ 02:36:30

TEST COMMENT: 1st Opening 30 Minutes Fair blow bob in 9 minutes
 2nd Opening 45 minutes Fair blow 606 in 6 minutes



PRESSURE SUMMARY

Time (Min.)	Pressure (psig)	Temp (deg F)	Annotation
0	1616.99	105.86	Initial Hydro-static
2	177.41	105.88	Open To Flow (1)
31	314.11	109.30	Shut-In(1)
60	1002.93	109.26	End Shut-In(1)
61	280.75	109.01	Open To Flow (2)
112	453.03	109.21	Shut-In(2)
175	930.96	109.09	End Shut-In(2)
176	1562.53	109.25	Final Hydro-static

Recovery

Length (ft)	Description	Volume (bbl)
600.00	GCO 10% Gas 90% Oil	8.42
135.00	GMCO 3% Gas 63% Oil 34% Mud	1.89
125.00	HMCO 56% Oil 44% Mud	1.75
125.00	SGHOCM 2% Gas 38% Oil 60% Mud	1.75
125.00	SGOCM 2% Gas 38% Oil 60% Mud	1.75
125.00	VHOCM 2% Gas 53% Mud 45% Oil	1.75

Gas Rates

	Choke (inches)	Pressure (psig)	Gas Rate (Mcf/d)



**TRILOBITE
TESTING, INC**

DRILL STEM TEST REPORT

American Warrior Inc.
PO Box 399
Garden City, KS 67846
ATTN: Wyatt Urban

11-18s-10w Rice, KS
Hoelscher Unit #1-11
Job Ticket: 60390 **DST#: 1**
Test Start: 2014.10.28 @ 22:11:00

GENERAL INFORMATION:

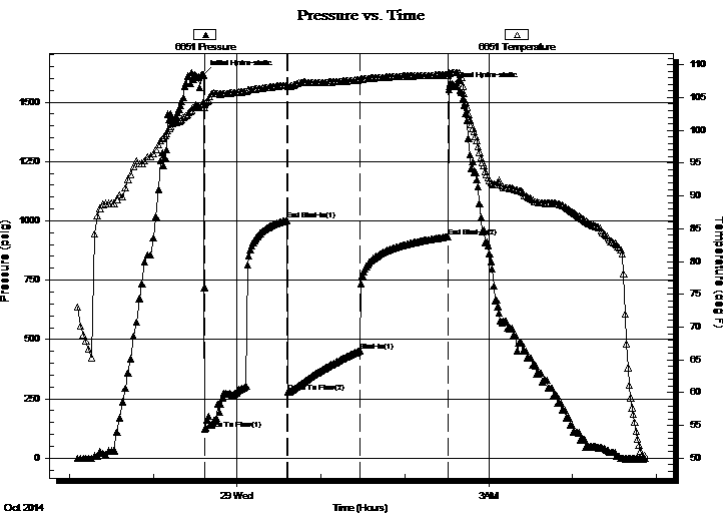
Formation: **Arbuckle**
Deviated: No Whipstock: ft (KB)
Time Tool Opened: 23:42:30
Time Test Ended: 04:57:30
Test Type: Conventional Bottom Hole (Initial)
Tester: Gene Budig
Unit No: S4
Interval: **3194.00 ft (KB) To 3280.00 ft (KB) (TVD)**
Reference Elevations: 1780.00 ft (KB)
Total Depth: 3280.00 ft (KB) (TVD) 1772.00 ft (CF)
Hole Diameter: inches Hole Condition: Poor KB to GR/CF: 8.00 ft

Serial #: 6651

Inside

Press@RunDepth: 933.06 psig @ 3276.27 ft (KB) Capacity: 8000.00 psig
Start Date: 2014.10.28 End Date: 2014.10.29 Last Calib.: 2014.10.28
Start Time: 22:06:00 End Time: 04:52:00 Time On Btm: 2014.10.28 @ 23:36:00
Time Off Btm: 2014.10.29 @ 02:32:00

TEST COMMENT: 1st Opening 30 Minutes Fair blow bob in 9 minutes
2nd Opening 45 minutes Fair blow 606 in 6 minutes



PRESSURE SUMMARY

Time (Min.)	Pressure (psig)	Temp (deg F)	Annotation
0	1615.00	104.14	Initial Hydro-static
1	122.42	104.01	Open To Flow (1)
60	1002.61	106.87	End Shut-In(1)
61	277.78	106.66	Open To Flow (2)
112	452.91	107.68	Shut-In(1)
175	933.06	108.44	End Shut-In(2)
176	1565.75	108.64	Final Hydro-static

Recovery

Length (ft)	Description	Volume (bbl)
600.00	GCO 10% Gas 90% Oil	8.42
135.00	GMCO 3% Gas 63% Oil 34% Mud	1.89
125.00	HMCO 56% Oil 44% Mud	1.75
125.00	SGHOCM 2% Gas 38% Oil 60% Mud	1.75
125.00	SGOCM 2% Gas 38% Oil 60% Mud	1.75
125.00	VHOCM 2% Gas 53% Mud 45% Oil	1.75

Gas Rates

	Choke (inches)	Pressure (psig)	Gas Rate (Mcf/d)



**TRILOBITE
TESTING, INC**

DRILL STEM TEST REPORT

TOOL DIAGRAM

American Warrior Inc.

11-18s-10w Rice,KS

PO Box 399
Garden City, KS 67846

Hoelscher Unit #1-11

Job Ticket: 60390

DST#: 1

ATTN: Wyatt Urban

Test Start: 2014.10.28 @ 22:11:00

Tool Information

Drill Pipe:	Length: 3192.00 ft	Diameter: 3.80 inches	Volume: 44.78 bbl	Tool Weight: 2000.00 lb
Heavy Wt. Pipe:	Length: 0.00 ft	Diameter: 0.00 inches	Volume: 0.00 bbl	Weight set on Packer: 20000.00 lb
Drill Collar:	Length: 0.00 ft	Diameter: 0.00 inches	Volume: 0.00 bbl	Weight to Pull Loose: 86000.00 lb
			<u>Total Volume: 44.78 bbl</u>	Tool Chased 10.00 ft
Drill Pipe Above KB:	26.00 ft			String Weight: Initial 45000.00 lb
Depth to Top Packer:	3194.00 ft			Final 50000.00 lb
Depth to Bottom Packer:	ft			
Interval between Packers:	86.27 ft			
Tool Length:	114.27 ft			
Number of Packers:	2	Diameter: 6.75 inches		

Tool Comments:

Tool Description

Tool Description	Length (ft)	Serial No.	Position	Depth (ft)	Accum. Lengths
Shut-In Tool	5.00			3171.00	
Hydraulic Tool	5.00			3176.00	
Jars	6.00			3182.00	
Safety Joint	2.00			3184.00	
Top Packer	5.00			3189.00	
Packer	5.00			3194.00	28.00 Bottom Of Top Packer
Anchor	10.00			3204.00	
Change Over Sub	0.75			3204.75	
Drill Pipe	63.77			3268.52	
Change Over Sub	0.75			3269.27	
Anchor	6.00			3275.27	
Recorder	1.00	6651	Inside	3276.27	
Recorder	1.00	8938	Outside	3277.27	
Bull Plug	3.00			3280.27	86.27 Anchor Tool

Total Tool Length: 114.27



**TRILOBITE
TESTING, INC**

DRILL STEM TEST REPORT

FLUID SUMMARY

American Warrior Inc.

11-18s-10w Rice,KS

PO Box 399
Garden City, KS 67846

Hoelscher Unit #1-11

Job Ticket: 60390

DST#: 1

ATTN: Wyatt Urban

Test Start: 2014.10.28 @ 22:11:00

Mud and Cushion Information

Mud Type: Gel Chem

Cushion Type:

Oil API:

deg API

Mud Weight: 9.00 lb/gal

Cushion Length:

ft

Water Salinity:

ppm

Viscosity: 52.00 sec/qt

Cushion Volume:

bbbl

Water Loss: 8.76 in³

Gas Cushion Type:

Resistivity: ohm.m

Gas Cushion Pressure:

psig

Salinity: 3400.00 ppm

Filter Cake: inches

Recovery Information

Recovery Table

Length ft	Description	Volume bbl
600.00	GCO 10% Gas 90%Oil	8.416
135.00	GMCO 3% Gas 63%Oil 34%Mud	1.894
125.00	HMCO 56%Oil 44%Mud	1.753
125.00	SGHOCM 2%Gas38%Oil 60%Mud	1.753
125.00	SGOCM 2%Gas 38%Oil 60%Mud	1.753
125.00	VHOCM 2%Gas 53%Mud45%Oil	1.753

Total Length: 1235.00 ft

Total Volume: 17.322 bbl

Num Fluid Samples: 0

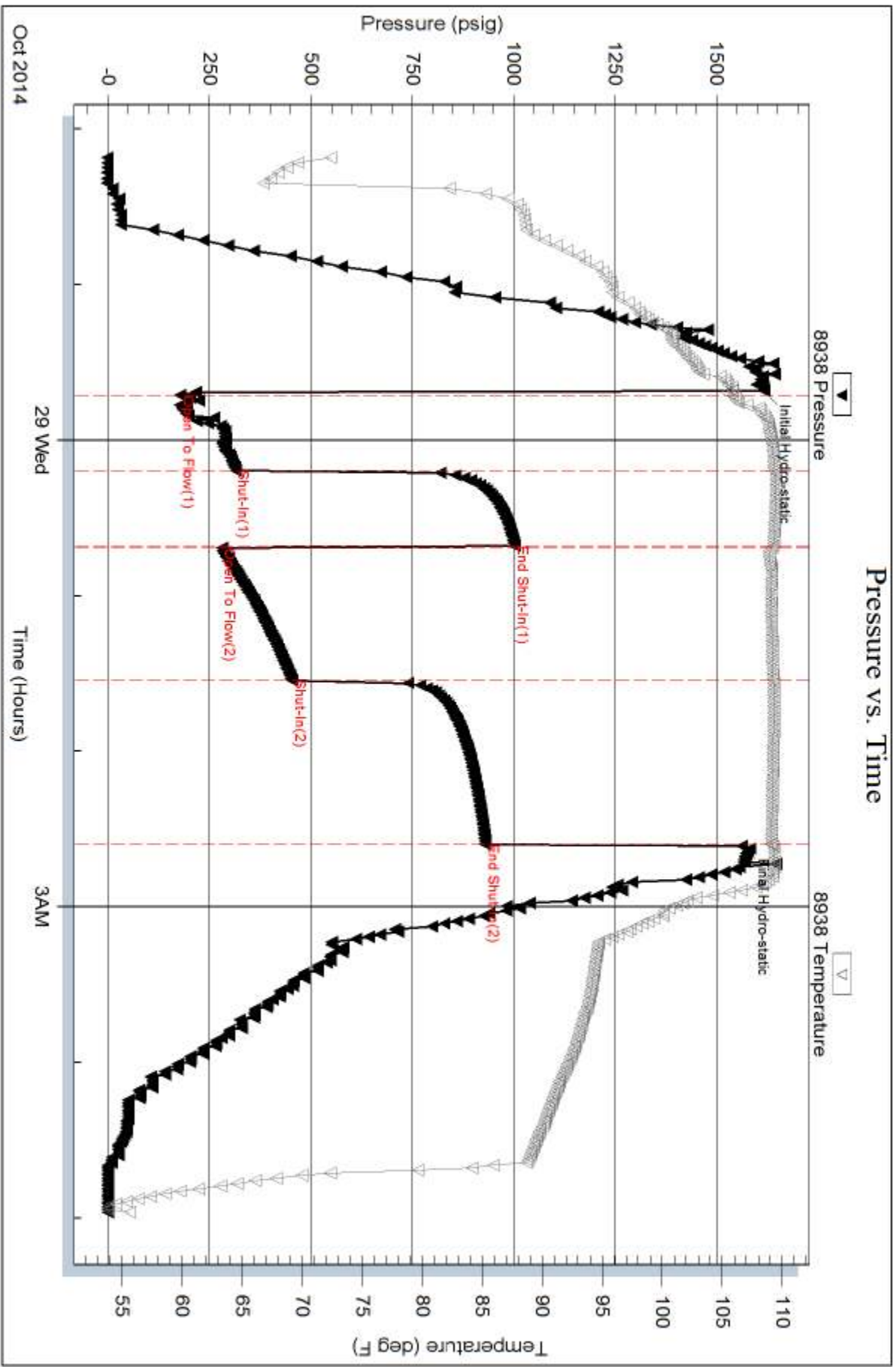
Num Gas Bombs: 0

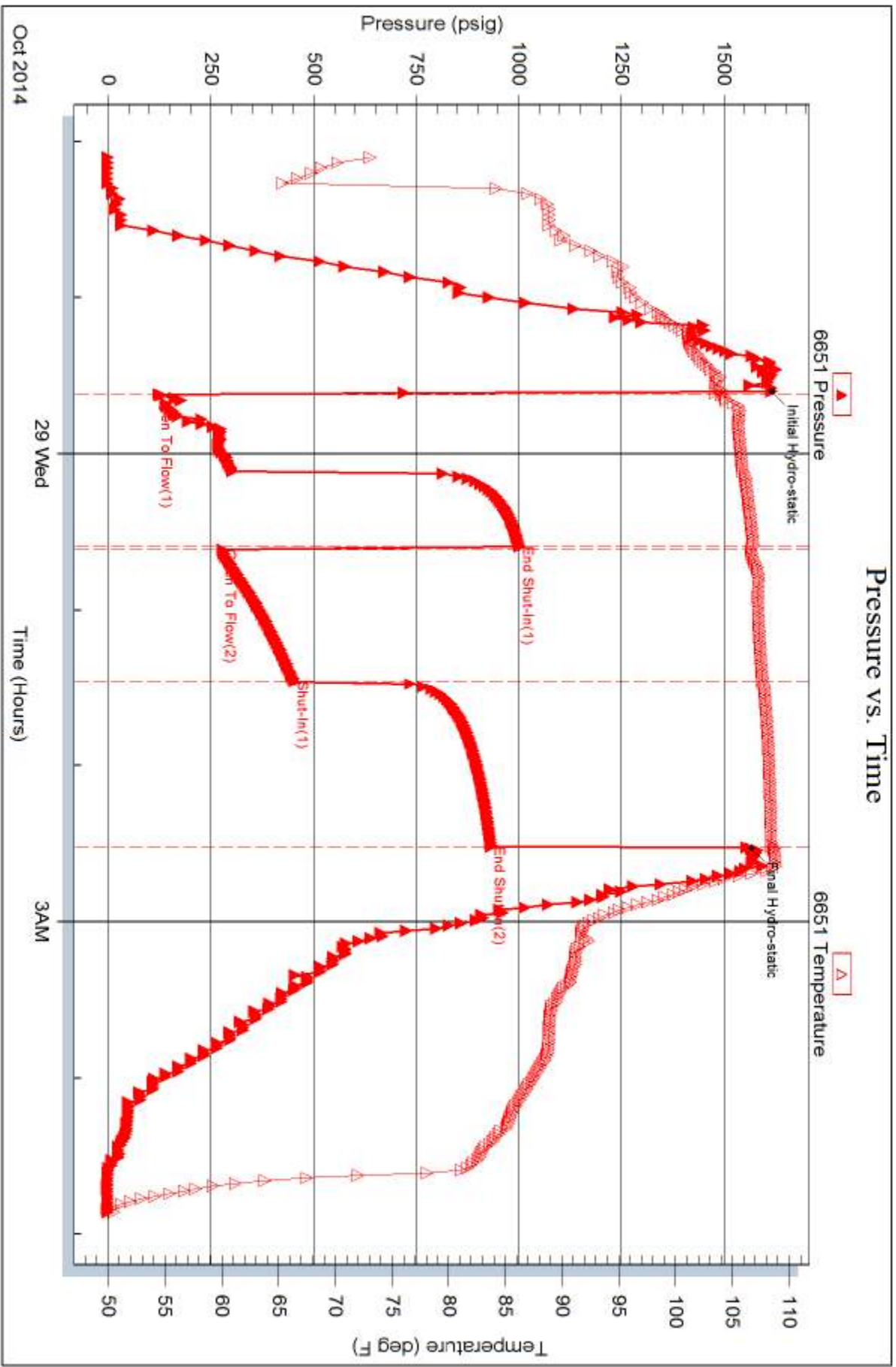
Serial #:

Laboratory Name:

Laboratory Location:

Recovery Comments:







TRILOBITE TESTING INC.

1515 Commerce Parkway • Hays, Kansas 67601

Test Ticket

NO. 60390

Well Name & No. Horsched Unit #1-11 Test No. 1 Date 10-27-2014
 Company AMERICAN WARRIOR INC Elevation 1780 KB 1772 GL
 Address 3118 Cummings Road Road P.O. Box 398 - Garden City Kansas 67846
 Co. Rep / Geo. WYATT URBAN Rig Duke Drilling #8
 Location: Sec. 11 Twp. 18W Rge. 10 Co. RICE State KANSAS

Interva Tested 3194-3280 Zone Tested ARBUCKLE
 Anchor Length 86 Drill Pipe Run 3167 Mud Wt. 9.3
 Top Packer Depth 3189 Drill Collars Run none Vis 52
 Bottom Packer Depth 3194 Wt. Pipe Run none WL 8.8
 Total Depth 3260 Chlorides 3400 ppm System LCM 0
 Blow Description 1st OPEN fair blow bob in 9 minutes
2nd OPEN fair blow bob in 6 minutes

Gravity 41 corrected

Rec	Feet of	10% gas	90 %oil	0 %water	0 %mud
600	CLEAN OIL				
138	VHOCM	3% gas	63 %oil	34 %water	340 %mud
125	VHOCM	0% gas	56 %oil	44 %water	440 %mud
125	VHOCM	2% gas	38 %oil	60 %water	60 %mud
125	VHOCM	2% gas	53 %oil	46 %water	40 %mud

Rec Total 1110 BHT 108 Gravity 41 API RW @ _____ °F Chlorides _____ ppm

(A) Initial Hydrostatic 1615
 (B) First Initial Flow 122
 (C) First Final Flow 302
 (D) Initial Shut-In 1002
 (E) Second Initial Flow 277
 (F) Second Final Flow 452
 (G) Final Shut-In 933
 (H) Final Hydrostatic _____

Test 1150
 Jars 250
 Safety Joint 75
 Circ Sub _____
 Hourly Standby _____
 Mileage 60 93
 Sampler _____
 Straddle _____
 Shale Packer _____
 Extra Packer _____
 Extra Recorder _____
 Day Standby _____
 Accessibility _____
 Sub Total 1568

T-On Location 9:45 P.M.
 T-Started 10:05 P.M.
 T-Open 11:40 P.M.
 T-Pulled 2:25 A.M.
 T-Out 4:58

Comments _____
 Ruined Shale Packer _____
 Ruined Packer _____
 Extra Copies _____
 Sub Total 0
 Total 1568
 MP/DST Disc't _____

Initial Open 30
 Initial Shut-In 30
 Final Flow 45
 Final Shut-In 60

Our Representative Dave Budy
 for damaged of any kind of the property or personnel of the one for whom a test is made, or for any loss suffered or sustained, directly or indirectly, through the use of its results of any test, tools lost or damaged in the hole shall be paid for at cost by the party for whom the test is made.