



**TRILOBITE TESTING, INC**

# DRILL STEM TEST REPORT

Woolsey Oper. Co. LLC.  
 125 N. Market Ste 1000  
 Wichita, KS 67202-1729  
 ATTN: Bill Klaver

**10-32s-12w Barber Co., KS**  
**Cunningham 7**  
 Job Ticket: 59924      **DST#: 1**  
 Test Start: 2014.11.07 @ 20:42:00

## GENERAL INFORMATION:

Formation: **Viola**  
 Deviated: No Whipstock: 0.00 ft (KB)  
 Time Tool Opened: 00:47:00  
 Time Test Ended: 05:35:00  
 Interval: **4481.00 ft (KB) To 4615.00 ft (KB) (TVD)**  
 Total Depth: 4615.00 ft (KB) (TVD)  
 Hole Diameter: 7.88 inches Hole Condition: Fair  
 Test Type: Conventional Bottom Hole (Initial)  
 Tester: Ryan Reynolds  
 Unit No: 68  
 Reference Elevations: 1524.00 ft (KB)  
 1512.00 ft (CF)  
 KB to GR/CF: 12.00 ft

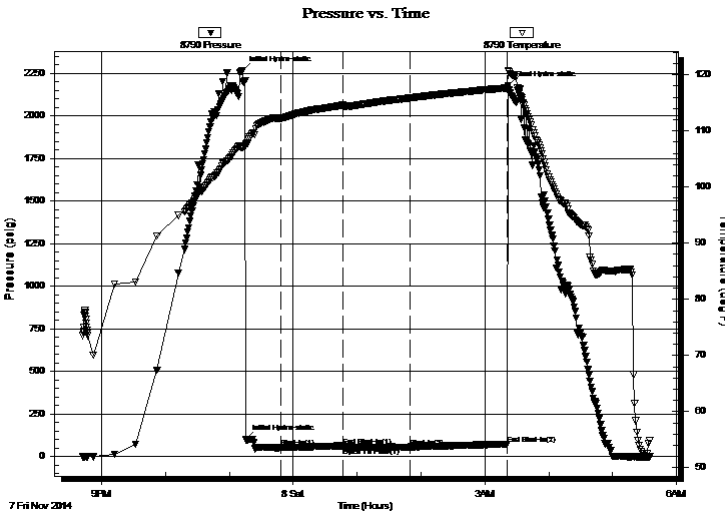
## Serial #: 8790

Inside

Press@RunDepth: 55.78 psig @ 4488.00 ft (KB)      Capacity: 8000.00 psig  
 Start Date: 2014.11.07      End Date: 2014.11.08      Last Calib.: 2014.11.08  
 Start Time: 20:42:05      End Time: 05:35:00      Time On Btm: 2014.11.07 @ 23:12:15  
 Time Off Btm: 2014.11.08 @ 03:21:45

TEST COMMENT: IF: Strong blow . BOB @ 9min.  
 IS: No blow  
 FF: Weak blow . surf. - 2"  
 FS: No blow

## PRESSURE SUMMARY



Time (Min.)	Pressure (psig)	Temp (deg F)	Annotation
0	2266.05	107.05	Initial Hydro-static
4	98.11	107.44	Initial Hydro-static
36	51.93	112.27	Shut-In(1)
94	62.12	114.56	End Shut-In(1)
95	52.63	114.51	Open To Flow (1)
158	55.78	115.86	Shut-In(2)
249	72.36	117.62	End Shut-In(2)
250	2176.20	120.78	Final Hydro-static

## Recovery

Length (ft)	Description	Volume (bbl)
90.00	Drig mud 100% m	0.44

## Gas Rates

	Choke (inches)	Pressure (psig)	Gas Rate (m <sup>3</sup> /d)



**TRILOBITE  
TESTING, INC**

# DRILL STEM TEST REPORT

**FLUID SUMMARY**

Woolsey Oper. Co. LLC.

**10-32s-12w Barber Co., KS**

125 N. Market Ste 1000  
Wichita, KS 67202-1729

**Cunningham 7**

Job Ticket: 59924

**DST#: 1**

ATTN: Bill Klaver

Test Start: 2014.11.07 @ 20:42:00

## Mud and Cushion Information

Mud Type: Gel Chem

Cushion Type:

Oil API:

deg API

Mud Weight: 9.00 lb/gal

Cushion Length:

ft

Water Salinity:

6000 ppm

Viscosity: 68.00 sec/qt

Cushion Volume:

bbbl

Water Loss: 8.79 in<sup>3</sup>

Gas Cushion Type:

Resistivity: ohm.m

Gas Cushion Pressure:

psig

Salinity: 6000.00 ppm

Filter Cake: 0.05 inches

## Recovery Information

Recovery Table

Length ft	Description	Volume bbl
90.00	Drig mud 100%m	0.443

Total Length: 90.00 ft      Total Volume: 0.443 bbl

Num Fluid Samples: 0

Num Gas Bombs: 0

Serial #: none

Laboratory Name:

Laboratory Location:

Recovery Comments:

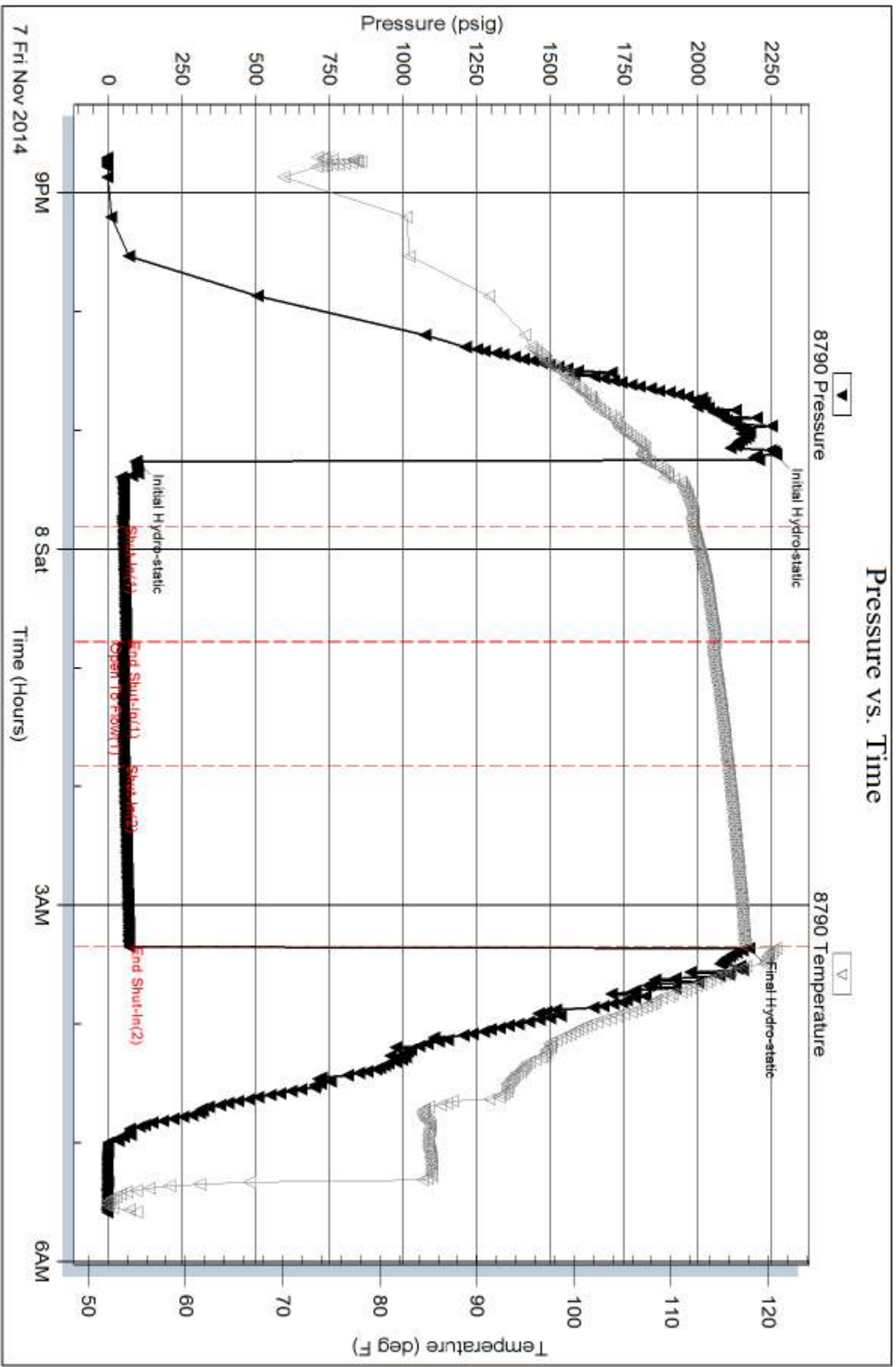
Serial #: 8790

Inside

Woodsey Oper. Co. LLC.

Cunningham 7

DST Test Number: 1



Trilobite Testing, Inc

Ref. No: 59924

Printed: 2014.11.08 @ 12:09:15