



DRILL STEM TEST REPORT

Prepared For: **Murfin Drlg, Co., Inc.**

250 N. Water, STE 300
Wichita, KS 67202

ATTN: Robert Hendrix

Kacirek Trust #2-5

5-2s-36w Rawlins,KS

Start Date: 2014.09.22 @ 14:16:00

End Date: 2014.09.22 @ 21:52:30

Job Ticket #: 60768 DST #: 1

Trilobite Testing, Inc
1515 Commerce Parkway Hays, KS 67601
ph: 785-625-4778 fax: 785-625-5620

Printed: 2014.10.01 @ 15:56:48



**TRILOBITE
TESTING, INC**

DRILL STEM TEST REPORT

Murfin Drlg, Co., Inc.

5-2s-36w Rawlins,KS

250 N. Water, STE 300
Wichita, KS 67202

Kacirek Trust #2-5

Job Ticket: 60768

DST#: 1

ATTN: Robert Hendrix

Test Start: 2014.09.22 @ 14:16:00

GENERAL INFORMATION:

Formation: **Stotler**

Deviated: No Whipstock: ft (KB)

Time Tool Opened: 16:52:30

Time Test Ended: 21:52:30

Test Type: Conventional Bottom Hole (Initial)

Tester: Brandon Quintana

Unit No: 48

Interval: 3884.00 ft (KB) To 3949.00 ft (KB) (TVD)

Reference Elevations: 3241.00 ft (KB)

Total Depth: 3949.00 ft (KB) (TVD)

3230.00 ft (CF)

Hole Diameter: 7.88 inches Hole Condition: Fair

KB to GR/CF: 11.00 ft

Serial #: 8647 Inside

Press@RunDepth: 45.50 psig @ 3885.00 ft (KB)

Capacity: 8000.00 psig

Start Date: 2014.09.22

End Date:

2014.09.22

Last Calib.:

2014.09.22

Start Time: 14:16:01

End Time:

21:52:30

Time On Btm:

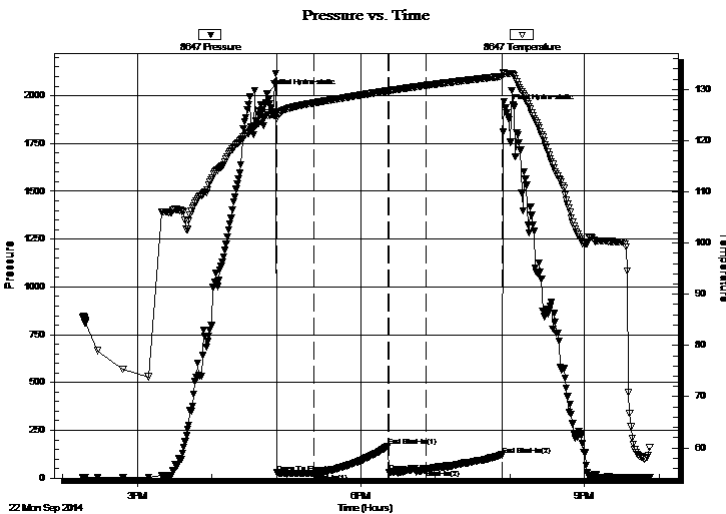
2014.09.22 @ 16:44:30

Time Off Btm:

2014.09.22 @ 19:56:30

TEST COMMENT: 30 - IF - Opened w/ surface blow , didn't build
60 - ISI - No Return
30 - FF - No Blow
60 - FSI - No Return

PRESSURE SUMMARY



Time (Min.)	Pressure (psig)	Temp (deg F)	Annotation
0	2011.98	125.39	Initial Hydro-static
8	27.77	124.27	Open To Flow (1)
38	25.81	127.37	Shut-In(1)
97	166.89	129.72	End Shut-In(1)
98	30.91	129.69	Open To Flow (2)
128	45.50	130.78	Shut-In(2)
189	121.71	132.55	End Shut-In(2)
192	1934.44	133.12	Final Hydro-static

Recovery

Length (ft)	Description	Volume (bbl)
2.00	100% mud	0.01

Gas Rates

	Choke (inches)	Pressure (psig)	Gas Rate (Mcf/d)



**TRILOBITE
TESTING, INC**

DRILL STEM TEST REPORT

TOOL DIAGRAM

Murfin Drlg, Co., Inc.

5-2s-36w Rawlins,KS

250 N. Water, STE 300
Wichita, KS 67202

Kacirek Trust #2-5

Job Ticket: 60768

DST#: 1

ATTN: Robert Hendrix

Test Start: 2014.09.22 @ 14:16:00

Tool Information

Drill Pipe:	Length: 3655.00 ft	Diameter: 3.80 inches	Volume: 51.27 bbl	Tool Weight: 2500.00 lb
Heavy Wt. Pipe:	Length: ft	Diameter: inches	Volume: - bbl	Weight set on Packer: 25000.00 lb
Drill Collar:	Length: 207.34 ft	Diameter: 2.25 inches	Volume: 1.02 bbl	Weight to Pull Loose: 85000.00 lb
			<u>Total Volume: - bbl</u>	Tool Chased 0.00 ft
Drill Pipe Above KB:	6.34 ft			String Weight: Initial 78000.00 lb
Depth to Top Packer:	3884.00 ft			Final 78000.00 lb
Depth to Bottom Packer:	ft			
Interval between Packers:	65.00 ft			
Tool Length:	93.00 ft			
Number of Packers:	2	Diameter: 6.75 inches		

Tool Comments:

Tool Description	Length (ft)	Serial No.	Position	Depth (ft)	Accum. Lengths
------------------	-------------	------------	----------	------------	----------------

Change Over Sub	1.00			3857.00	
Shut In Tool	5.00			3862.00	
Hydraulic tool	5.00		Inside	3867.00	
Jars	5.00			3872.00	
Safety Joint	3.00			3875.00	
Packer	5.00			3880.00	28.00 Bottom Of Top Packer
Packer	4.00			3884.00	
Stubb	1.00			3885.00	
Recorder	0.00	8647	Inside	3885.00	
Recorder	0.00	8372	Outside	3885.00	
Perforations	27.00			3912.00	
Change Over Sub	1.00			3913.00	
Drill Pipe	32.00			3945.00	
Change Over Sub	1.00			3946.00	
Bullnose	3.00			3949.00	65.00 Bottom Packers & Anchor

Total Tool Length: 93.00



**TRILOBITE
TESTING, INC**

DRILL STEM TEST REPORT

FLUID SUMMARY

Murfin Drlg, Co., Inc.

5-2s-36w Rawlins,KS

250 N. Water, STE 300
Wichita, KS 67202

Kacirek Trust #2-5

Job Ticket: 60768

DST#: 1

ATTN: Robert Hendrix

Test Start: 2014.09.22 @ 14:16:00

Mud and Cushion Information

Mud Type: Gel Chem

Cushion Type:

Oil API:

deg API

Mud Weight: 9.00 lb/gal

Cushion Length:

ft

Water Salinity:

ppm

Viscosity: 76.00 sec/qt

Cushion Volume:

bbbl

Water Loss: 9.17 in³

Gas Cushion Type:

Resistivity: 0.00 ohm.m

Gas Cushion Pressure:

psig

Salinity: 600.00 ppm

Filter Cake: 4.00 inches

Recovery Information

Recovery Table

Length ft	Description	Volume bbl
2.00	100% mud	0.010

Total Length: 2.00 ft Total Volume: 0.010 bbl

Num Fluid Samples: 0

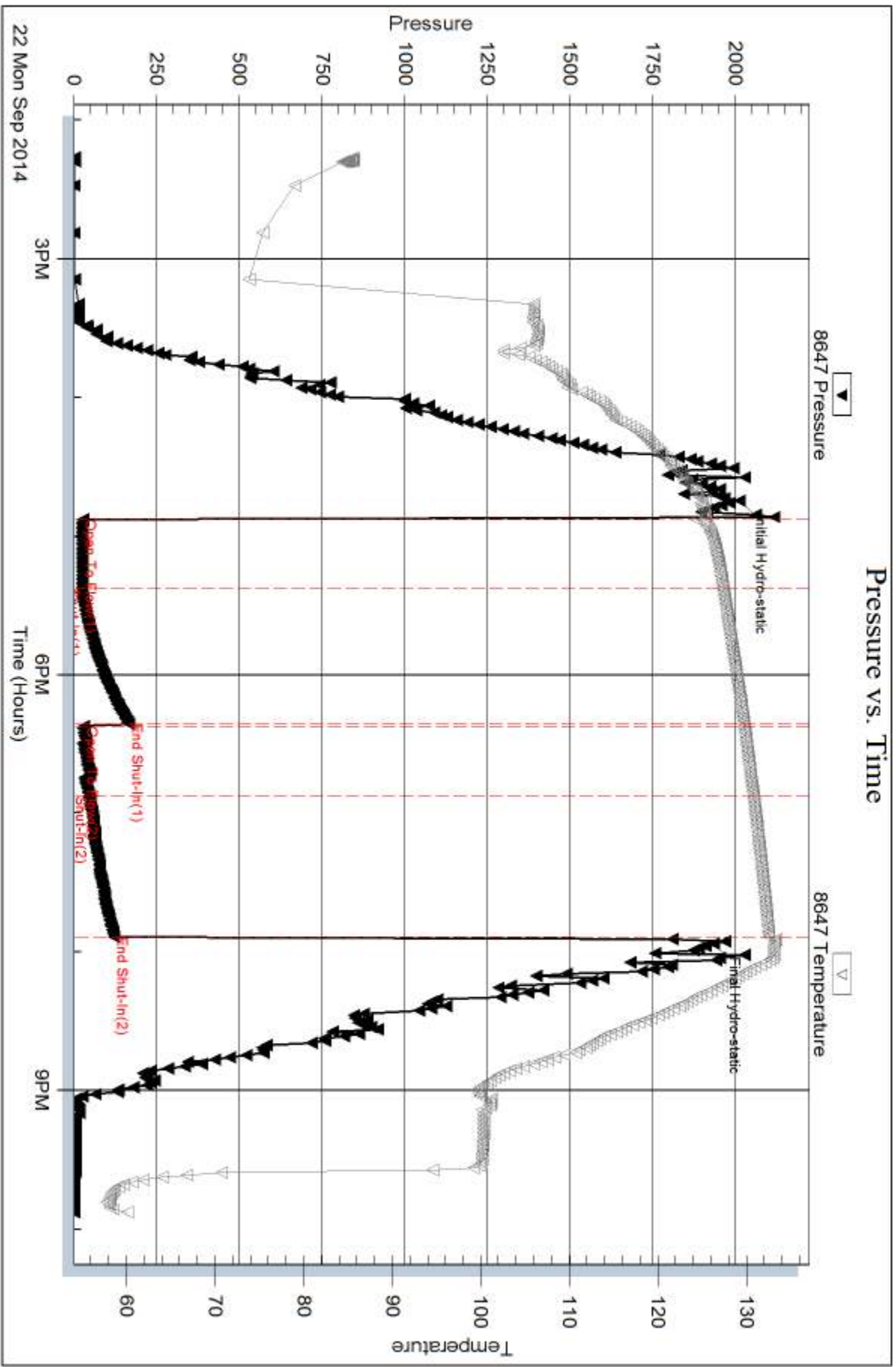
Num Gas Bombs: 0

Serial #:

Laboratory Name:

Laboratory Location:

Recovery Comments:

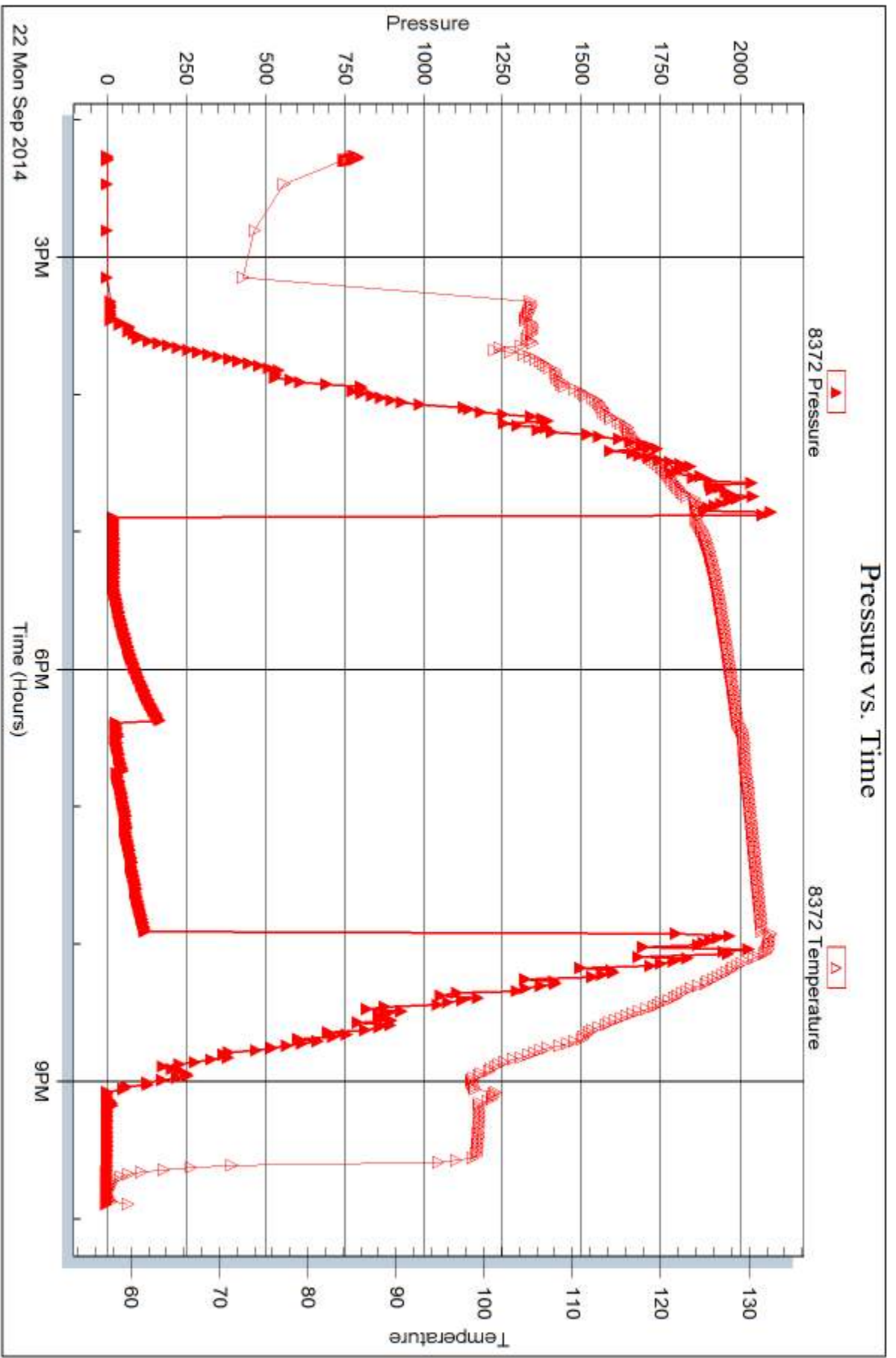


Serial #: 8372

Outside Murfin Drfg. Co., Inc.

Kacirek Trust #2-5

DST Test Number: 1



Trilobite Testing, Inc

Ref. No: 60768

Printed: 2014, 10.01 @ 15:56:50



DRILL STEM TEST REPORT

Prepared For: **Murfin Drlg, Co., Inc.**

250 N. Water, STE 300
Wichita, KS 67202

ATTN: Robert Hendrix

Kacirek Trust #2-5

5-2s-36w Rawlins,KS

Start Date: 2014.09.23 @ 12:46:00

End Date: 2014.09.23 @ 21:31:30

Job Ticket #: 60769 DST #: 2

Trilobite Testing, Inc
1515 Commerce Parkway Hays, KS 67601
ph: 785-625-4778 fax: 785-625-5620

Printed: 2014.10.01 @ 15:56:27



**TRILOBITE
TESTING, INC**

DRILL STEM TEST REPORT

Murfin Drlg, Co., Inc.

5-2s-36w Rawlins,KS

250 N. Water, STE 300
Wichita, KS 67202

Kacirek Trust #2-5

ATTN: Robert Hendrix

Job Ticket: 60769

DST#: 2

Test Start: 2014.09.23 @ 12:46:00

GENERAL INFORMATION:

Formation: **Oread**

Deviated: No Whipstock: ft (KB)

Time Tool Opened: 14:43:30

Time Test Ended: 21:31:30

Test Type: Conventional Bottom Hole (Initial)

Tester: Brandon Quintana

Unit No: 48

Interval: 4033.00 ft (KB) To 4087.00 ft (KB) (TVD)

Reference Elevations: 3241.00 ft (KB)

Total Depth: 4087.00 ft (KB) (TVD)

3230.00 ft (CF)

Hole Diameter: 7.88 inches Hole Condition: Fair

KB to GR/CF: 11.00 ft

Serial #: 8647

Inside

Press@RunDepth: 341.73 psig @ 4034.00 ft (KB)

Capacity: 8000.00 psig

Start Date: 2014.09.23

End Date: 2014.09.23

Last Calib.: 2014.09.23

Start Time: 12:46:01

End Time: 21:31:30

Time On Btm: 2014.09.23 @ 14:40:30

Time Off Btm: 2014.09.23 @ 18:52:30

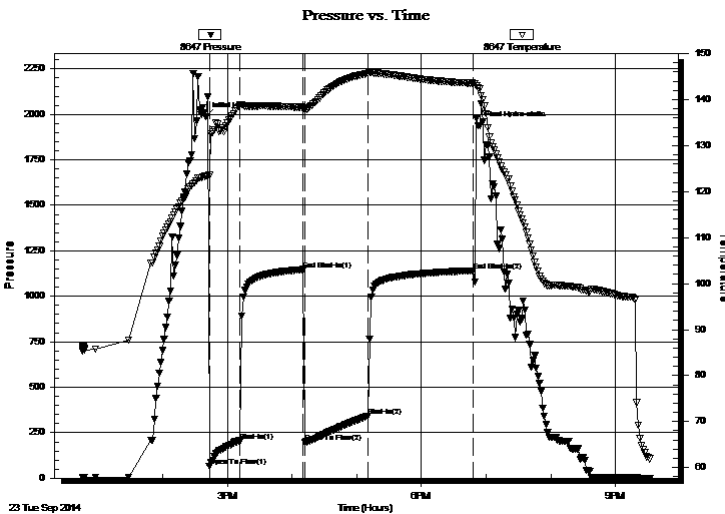
TEST COMMENT: 30 - IF - Opened w/ surface blow , built to B.o.B in 13 min.

60 - ISI - No Return

60 - FF - Blow built to B.o.B in 15 min.

90 - FSI - Return built to 3

PRESSURE SUMMARY



Time (Min.)	Pressure (psig)	Temp (deg F)	Annotation
0	1985.53	123.44	Initial Hydro-static
3	64.81	123.53	Open To Flow (1)
32	204.53	138.93	Shut-In(1)
90	1146.69	138.33	End Shut-In(1)
92	197.81	137.88	Open To Flow (2)
150	341.73	145.72	Shut-In(2)
248	1140.95	143.56	End Shut-In(2)
252	1936.18	142.55	Final Hydro-static

Recovery

Length (ft)	Description	Volume (bbl)
180.00	MW 90%w , 10%m	0.89
184.00	WOCM 75%w , 20%m, 5%o	2.33
248.00	OCM 80%m, 20%o	3.48
90.00	100%CO	1.26

Gas Rates

	Choke (inches)	Pressure (psig)	Gas Rate (Mcf/d)



**TRILOBITE
TESTING, INC**

DRILL STEM TEST REPORT

TOOL DIAGRAM

Murfin Drlg, Co., Inc.

5-2s-36w Rawlins,KS

250 N. Water, STE 300
Wichita, KS 67202

Kacirek Trust #2-5

Job Ticket: 60769

DST#: 2

ATTN: Robert Hendrix

Test Start: 2014.09.23 @ 12:46:00

Tool Information

Drill Pipe:	Length: 3814.00 ft	Diameter: 3.80 inches	Volume: 53.50 bbl	Tool Weight: 2500.00 lb
Heavy Wt. Pipe:	Length: 0.00 ft	Diameter: inches	Volume: 0.00 bbl	Weight set on Packer: 25000.00 lb
Drill Collar:	Length: 207.34 ft	Diameter: 2.25 inches	Volume: 1.02 bbl	Weight to Pull Loose: 90000.00 lb
			<u>Total Volume: 54.52 bbl</u>	Tool Chased 0.00 ft
Drill Pipe Above KB:	16.34 ft			String Weight: Initial 84000.00 lb
Depth to Top Packer:	4033.00 ft			Final 86000.00 lb
Depth to Bottom Packer:	ft			
Interval between Packers:	54.00 ft			
Tool Length:	82.00 ft			
Number of Packers:	2	Diameter: 6.75 inches		

Tool Comments:

Tool Description

Tool Description	Length (ft)	Serial No.	Position	Depth (ft)	Accum. Lengths
Change Over Sub	1.00			4006.00	
Shut In Tool	5.00			4011.00	
Hydraulic tool	5.00		Inside	4016.00	
Jars	5.00			4021.00	
Safety Joint	3.00			4024.00	
Packer	5.00			4029.00	28.00 Bottom Of Top Packer
Packer	4.00			4033.00	
Stubb	1.00			4034.00	
Recorder	0.00	8647	Inside	4034.00	
Recorder	0.00	8372	Outside	4034.00	
Perforations	16.00			4050.00	
Change Over Sub	1.00			4051.00	
Drill Pipe	32.00			4083.00	
Change Over Sub	1.00			4084.00	
Bullnose	3.00			4087.00	54.00 Bottom Packers & Anchor

Total Tool Length: 82.00



**TRILOBITE
TESTING, INC**

DRILL STEM TEST REPORT

FLUID SUMMARY

Murfin Drlg, Co., Inc.

5-2s-36w Rawlins,KS

250 N. Water, STE 300
Wichita, KS 67202

Kacirek Trust #2-5

Job Ticket: 60769

DST#: 2

ATTN: Robert Hendrix

Test Start: 2014.09.23 @ 12:46:00

Mud and Cushion Information

Mud Type: Gel Chem

Cushion Type:

Oil API:

deg API

Mud Weight: 9.00 lb/gal

Cushion Length:

ft

Water Salinity:

ppm

Viscosity: 76.00 sec/qt

Cushion Volume:

bbbl

Water Loss: 9.17 in³

Gas Cushion Type:

Resistivity: 0.00 ohm.m

Gas Cushion Pressure:

psig

Salinity: 600.00 ppm

Filter Cake: 4.00 inches

Recovery Information

Recovery Table

Length ft	Description	Volume bbbl
180.00	MW 90%w , 10%m	0.885
184.00	WOCM 75%w , 20%m, 5%o	2.332
248.00	OCM 80%m, 20%o	3.479
90.00	100%CO	1.262

Total Length: 702.00 ft Total Volume: 7.958 bbl

Num Fluid Samples: 0

Num Gas Bombs: 0

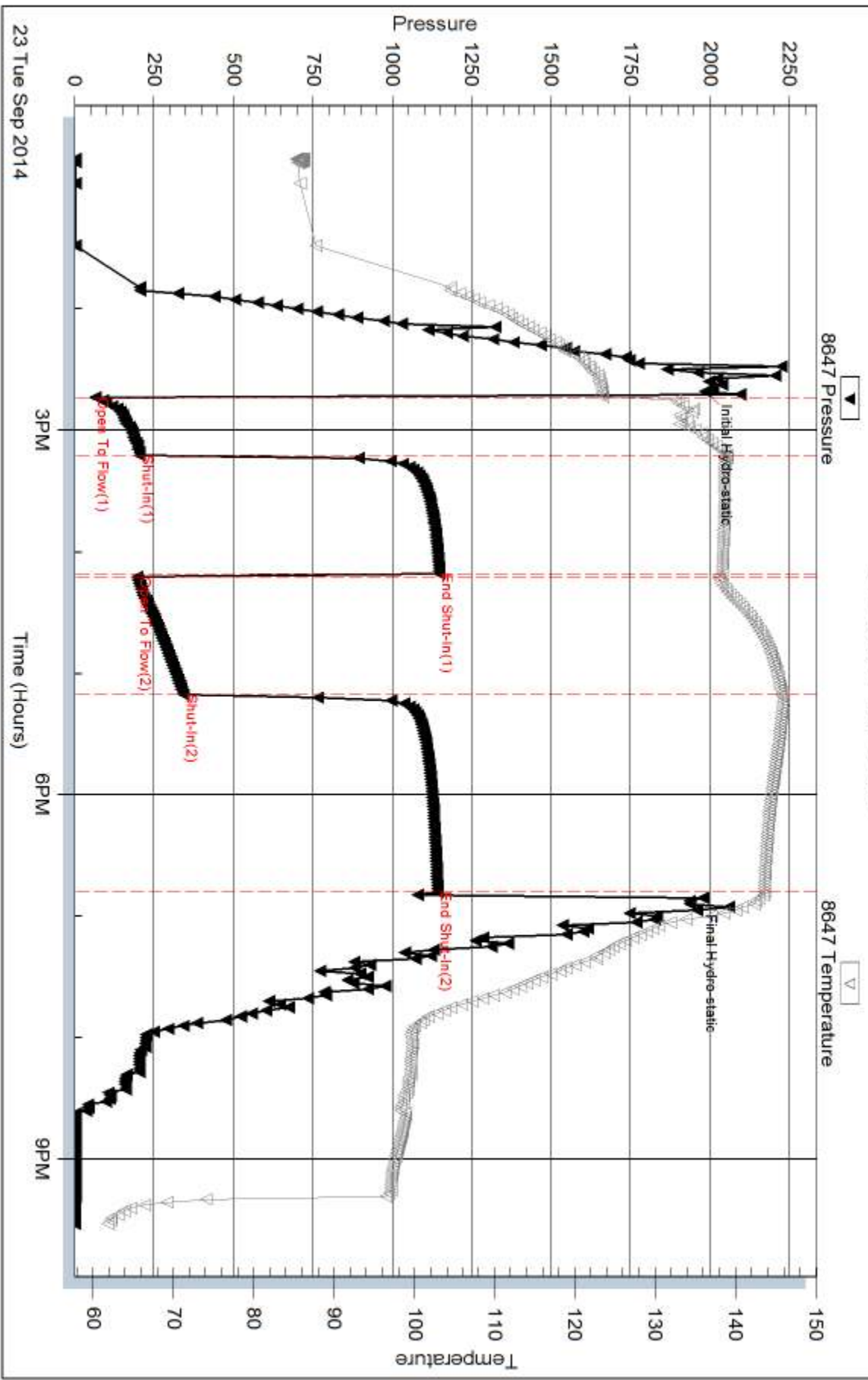
Serial #:

Laboratory Name:

Laboratory Location:

Recovery Comments: Couldn't get a gravity do to oil being w ay to thick

Pressure vs. Time

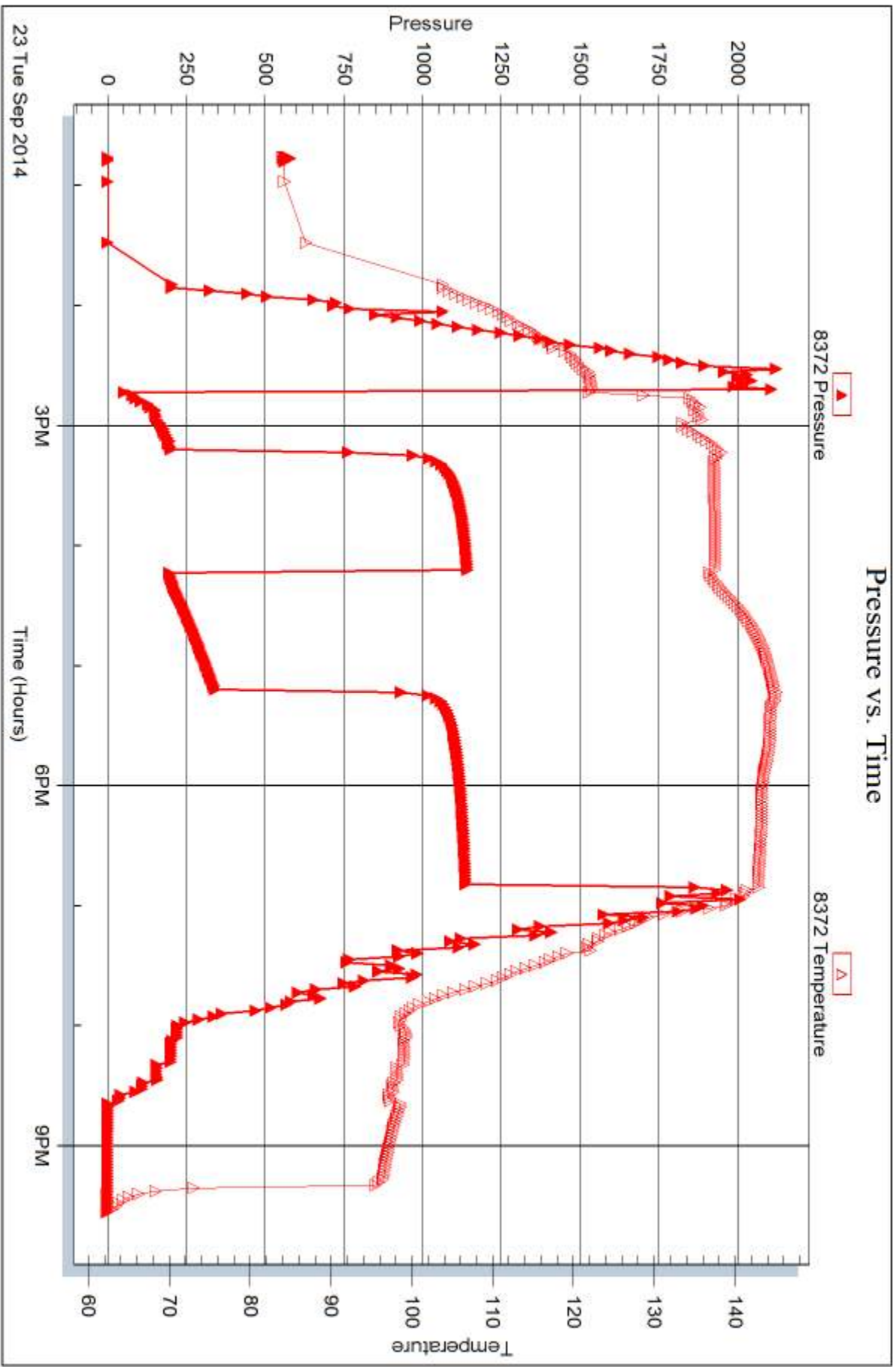


Serial #: 8372

Outside Murfin Dtg. Co., Inc.

Kacirek Trust #2-5

DST Test Number: 2



Triobite Testing, Inc

Ref. No: 60769

Printed: 2014, 10.01 @ 15:56:29



DRILL STEM TEST REPORT

Prepared For: **Murfin Drlg, Co., Inc.**

250 N. Water, STE 300
Wichita, KS 67202

ATTN: Robert Hendrix

Kacirek Trust #2-5

5-2s-36w Rawlins,KS

Start Date: 2014.09.24 @ 12:34:00

End Date: 2014.09.24 @ 20:58:30

Job Ticket #: 60770 DST #: 3

Trilobite Testing, Inc
1515 Commerce Parkway Hays, KS 67601
ph: 785-625-4778 fax: 785-625-5620

Printed: 2014.10.01 @ 15:56:02

Murfin Drlg, Co., Inc.

5-2s-36w Rawlins,KS

Kacirek Trust #2-5

DST # 3

Lansing

2014.09.24



**TRILOBITE
TESTING, INC**

DRILL STEM TEST REPORT

Murfin Drlg, Co., Inc.

5-2s-36w Rawlins,KS

250 N. Water, STE 300
Wichita, KS 67202

Kacirek Trust #2-5

Job Ticket: 60770

DST#: 3

ATTN: Robert Hendrix

Test Start: 2014.09.24 @ 12:34:00

GENERAL INFORMATION:

Formation: **Lansing**

Deviated: No Whipstock: ft (KB)

Time Tool Opened: 14:48:00

Time Test Ended: 20:58:30

Test Type: Conventional Bottom Hole (Initial)

Tester: Brandon Quintana

Unit No: 48

Interval: 4110.00 ft (KB) To 4200.00 ft (KB) (TVD)

Reference Elevations: 3241.00 ft (KB)

Total Depth: 4200.00 ft (KB) (TVD)

3230.00 ft (CF)

Hole Diameter: 7.88 inches Hole Condition: Fair

KB to GR/CF: 11.00 ft

Serial #: 8647

Inside

Press@RunDepth: 80.68 psig @ 4111.00 ft (KB)

Capacity: 8000.00 psig

Start Date: 2014.09.24

End Date:

2014.09.24

Last Calib.:

2014.09.24

Start Time: 12:34:01

End Time:

20:58:30

Time On Btm:

2014.09.24 @ 14:40:30

Time Off Btm:

2014.09.24 @ 18:54:00

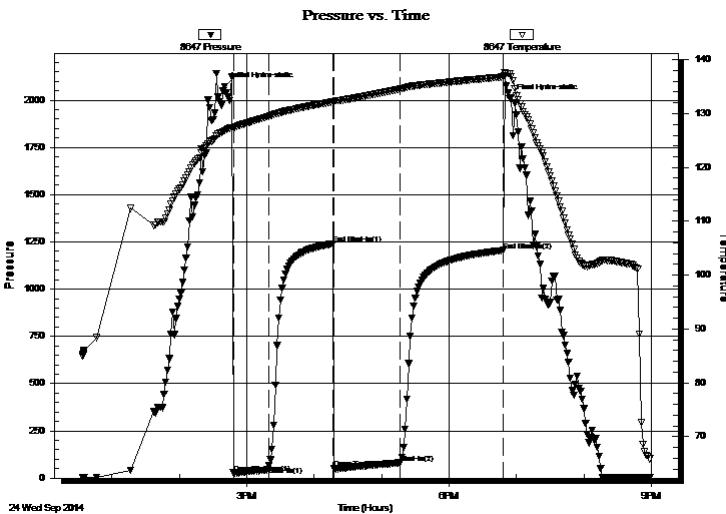
TEST COMMENT: 30 - IF - Opened w/ surface blow , built to 3 3/4"

60 - ISI - No Return

60 - FF - Blow built to B.o.B in 55 min.

90 - FSI - No Return

PRESSURE SUMMARY



Time (Min.)	Pressure (psig)	Temp (deg F)	Annotation
0	2070.27	126.83	Initial Hydro-static
8	28.01	127.35	Open To Flow (1)
39	64.58	129.49	Shut-In(1)
96	1239.66	132.19	End Shut-In(1)
98	50.31	132.28	Open To Flow (2)
156	80.68	134.56	Shut-In(2)
248	1204.68	136.82	End Shut-In(2)
254	2008.10	137.45	Final Hydro-static

Recovery

Length (ft)	Description	Volume (bbl)
80.00	GOCM 40% m, 30% o, 30% g	0.39
100.00	100% CO	0.49

Gas Rates

	Choke (inches)	Pressure (psig)	Gas Rate (Mcf/d)



**TRILOBITE
TESTING, INC**

DRILL STEM TEST REPORT

TOOL DIAGRAM

Murfin Drlg, Co., Inc.

5-2s-36w Rawlins,KS

250 N. Water, STE 300
Wichita, KS 67202

Kacirek Trust #2-5

Job Ticket: 60770

DST#: 3

ATTN: Robert Hendrix

Test Start: 2014.09.24 @ 12:34:00

Tool Information

Drill Pipe:	Length: 3907.00 ft	Diameter: 3.80 inches	Volume: 54.80 bbl	Tool Weight: 2500.00 lb
Heavy Wt. Pipe:	Length: 0.00 ft	Diameter: inches	Volume: 0.00 bbl	Weight set on Packer: 25000.00 lb
Drill Collar:	Length: 207.34 ft	Diameter: 2.25 inches	Volume: 1.02 bbl	Weight to Pull Loose: 90000.00 lb
			<u>Total Volume: 55.82 bbl</u>	Tool Chased 0.00 ft
Drill Pipe Above KB:	32.34 ft			String Weight: Initial 84000.00 lb
Depth to Top Packer:	4110.00 ft			Final 85000.00 lb
Depth to Bottom Packer:	ft			
Interval between Packers:	90.00 ft			
Tool Length:	118.00 ft			
Number of Packers:	2	Diameter: 6.75 inches		

Tool Comments:

Tool Description

Tool Description	Length (ft)	Serial No.	Position	Depth (ft)	Accum. Lengths
Change Over Sub	1.00			4083.00	
Shut In Tool	5.00			4088.00	
Hydraulic tool	5.00		Inside	4093.00	
Jars	5.00			4098.00	
Safety Joint	3.00			4101.00	
Packer	5.00			4106.00	28.00 Bottom Of Top Packer
Packer	4.00			4110.00	
Stubb	1.00			4111.00	
Recorder	0.00	8647	Inside	4111.00	
Recorder	0.00	8372	Outside	4111.00	
Perforations	22.00			4133.00	
Change Over Sub	1.00			4134.00	
Drill Pipe	62.00			4196.00	
Change Over Sub	1.00			4197.00	
Bullnose	3.00			4200.00	90.00 Bottom Packers & Anchor

Total Tool Length: 118.00



**TRILOBITE
TESTING, INC**

DRILL STEM TEST REPORT

FLUID SUMMARY

Murfin Drlg, Co., Inc.

5-2s-36w Rawlins,KS

250 N. Water, STE 300
Wichita, KS 67202

Kacirek Trust #2-5

Job Ticket: 60770

DST#: 3

ATTN: Robert Hendrix

Test Start: 2014.09.24 @ 12:34:00

Mud and Cushion Information

Mud Type: Gel Chem

Cushion Type:

Oil API:

deg API

Mud Weight: 9.00 lb/gal

Cushion Length:

ft

Water Salinity:

ppm

Viscosity: 90.00 sec/qt

Cushion Volume:

bbbl

Water Loss: 6.78 in³

Gas Cushion Type:

Resistivity: 0.00 ohm.m

Gas Cushion Pressure:

psig

Salinity: 600.00 ppm

Filter Cake: 2.00 inches

Recovery Information

Recovery Table

Length ft	Description	Volume bbl
80.00	GOCM 40%m, 30%o, 30%g	0.393
100.00	100%CO	0.492

Total Length: 180.00 ft Total Volume: 0.885 bbl

Num Fluid Samples: 0

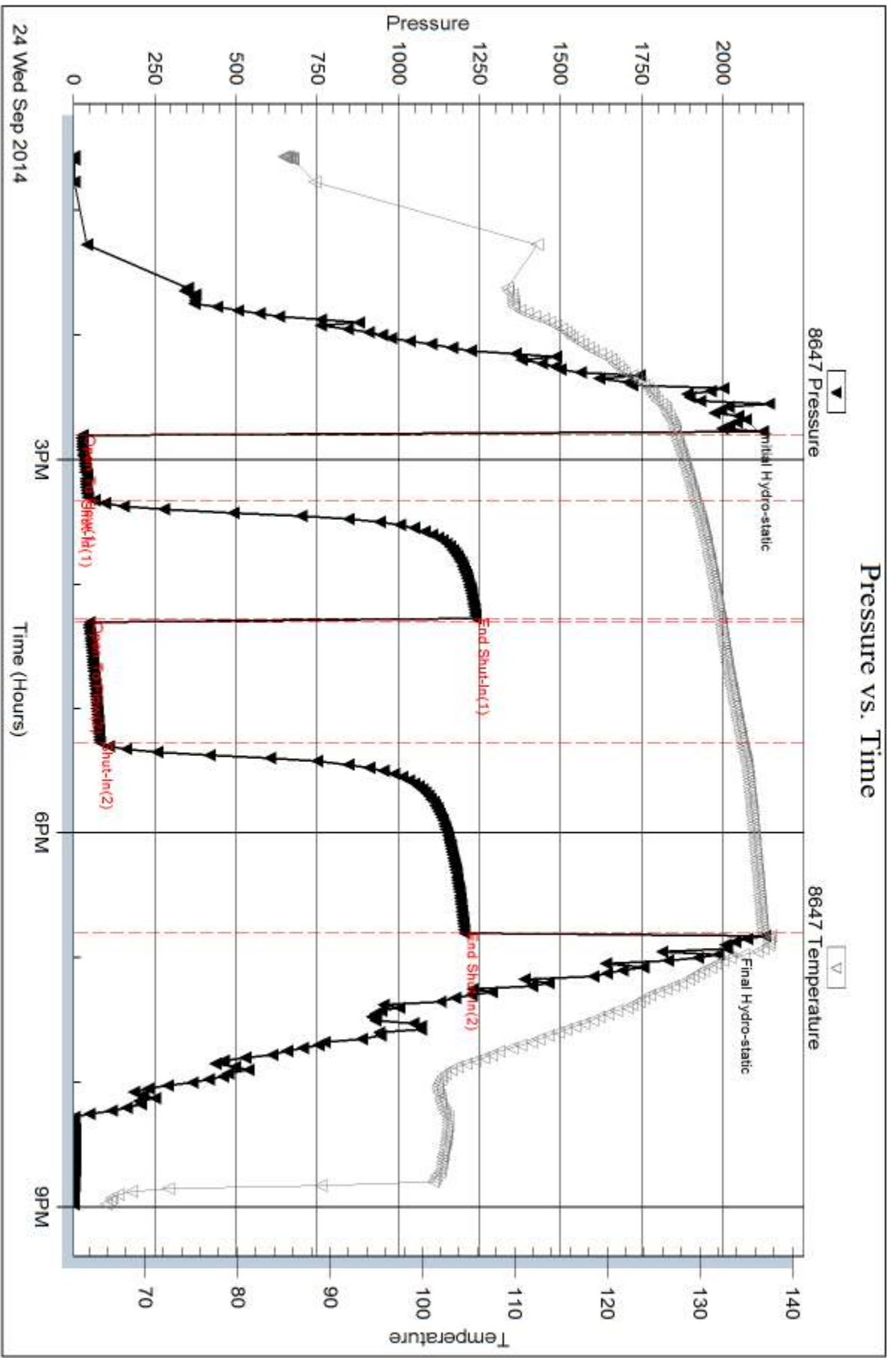
Num Gas Bombs: 0

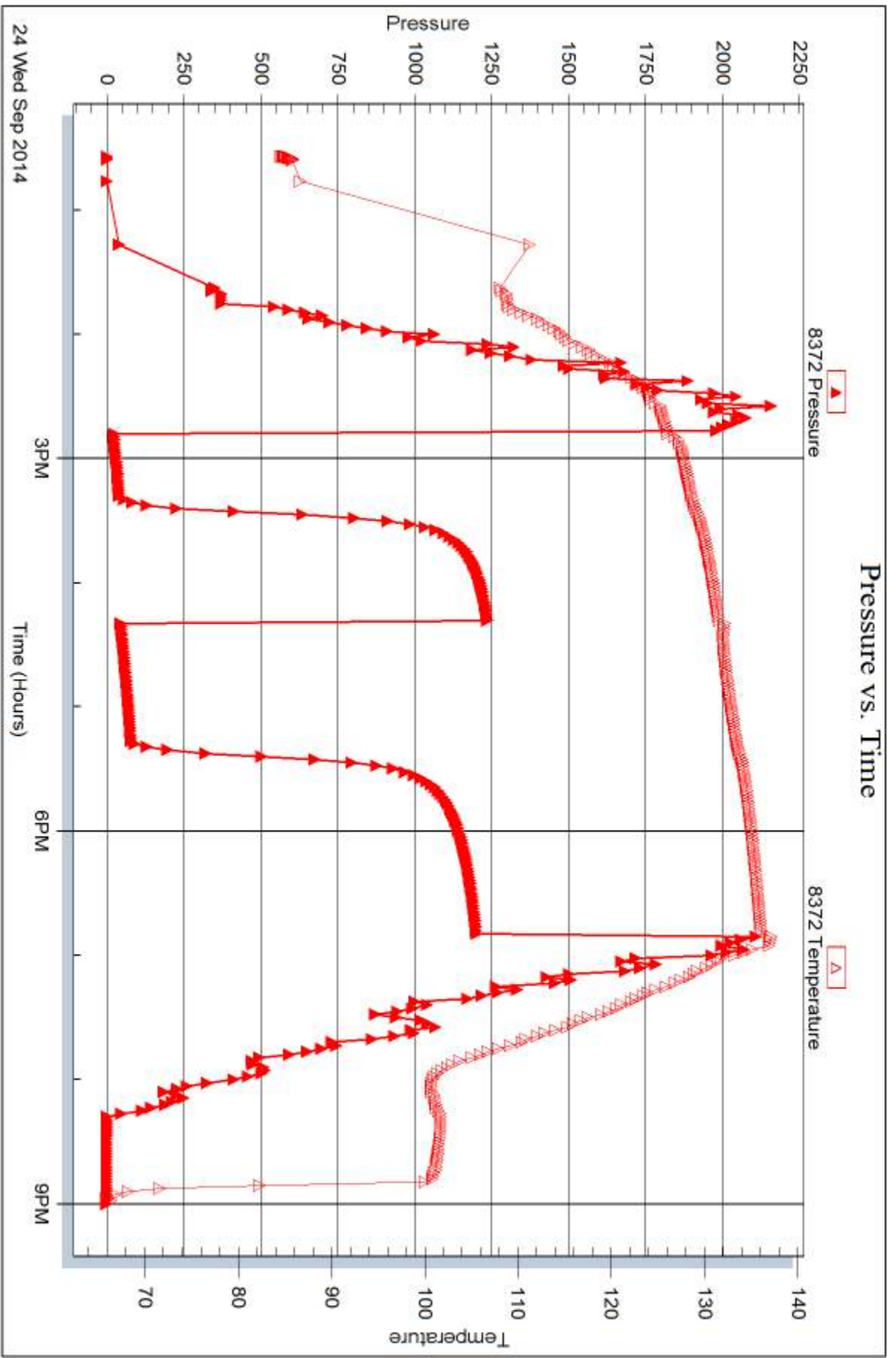
Serial #:

Laboratory Name:

Laboratory Location:

Recovery Comments: Gravity = 35 @ 82 Corrected = 37







DRILL STEM TEST REPORT

Prepared For: **Murfin Drlg, Co., Inc.**

250 N. Water, STE 300
Wichita, KS 67202

ATTN: Robert Hendrix

Kacirek Trust #2-5

5-2s-36w Rawlins,KS

Start Date: 2014.09.25 @ 05:21:00

End Date: 2014.09.25 @ 12:43:30

Job Ticket #: 60771 DST #: 4

Trilobite Testing, Inc
1515 Commerce Parkway Hays, KS 67601
ph: 785-625-4778 fax: 785-625-5620

Printed: 2014.10.01 @ 15:55:37



TRILOBITE TESTING, INC

DRILL STEM TEST REPORT

Murfin Drlg, Co., Inc.
 250 N. Water, STE 300
 Wichita, KS 67202
 ATTN: Robert Hendrix

5-2s-36w Rawlins,KS
Kacirek Trust #2-5
 Job Ticket: 60771 **DST#: 4**
 Test Start: 2014.09.25 @ 05:21:00

GENERAL INFORMATION:

Formation: **LKC "D"**
 Deviated: No Whipstock: ft (KB)
 Time Tool Opened: 07:33:30
 Time Test Ended: 12:43:30
 Interval: **4189.00 ft (KB) To 4240.00 ft (KB) (TVD)**
 Total Depth: 4240.00 ft (KB) (TVD)
 Hole Diameter: 7.88 inches Hole Condition: Fair
 Test Type: Conventional Bottom Hole (Initial)
 Tester: Brandon Quintana
 Unit No: 48
 Reference Elevations: 3241.00 ft (KB)
 3230.00 ft (CF)
 KB to GR/CF: 11.00 ft

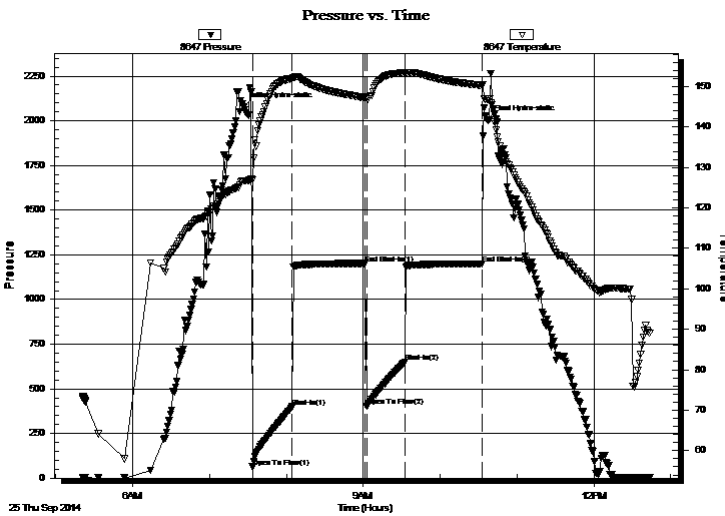
Serial #: 8647

Inside

Press@RunDepth: 649.85 psig @ 4190.00 ft (KB) Capacity: 8000.00 psig
 Start Date: 2014.09.25 End Date: 2014.09.25 Last Calib.: 2014.09.25
 Start Time: 05:21:01 End Time: 12:43:30 Time On Btm: 2014.09.25 @ 07:26:30
 Time Off Btm: 2014.09.25 @ 10:36:30

TEST COMMENT: 30 - IF - Opened w/ surface blow , built to B.o.B in 5 min.
 60 - ISI - No Return
 30 - FF - Blow built to B.o.B in 5 min
 60 - FSI - No Return

PRESSURE SUMMARY



Time (Min.)	Pressure (psig)	Temp (deg F)	Annotation
0	2077.03	126.66	Initial Hydro-static
7	62.72	126.99	Open To Flow (1)
38	399.66	151.95	Shut-In(1)
95	1201.69	147.25	End Shut-In(1)
96	403.38	146.94	Open To Flow (2)
126	649.85	153.43	Shut-In(2)
186	1200.42	150.25	End Shut-In(2)
190	2006.52	146.87	Final Hydro-static

Recovery

Length (ft)	Description	Volume (bbl)
798.00	MW 87%w , 13%m	9.31
578.00	MW 50%w , 50%m	8.11

Gas Rates

Choke (inches)	Pressure (psig)	Gas Rate (Mcf/d)



**TRILOBITE
TESTING, INC**

DRILL STEM TEST REPORT

TOOL DIAGRAM

Murfin Drlg, Co., Inc.

5-2s-36w Rawlins,KS

250 N. Water, STE 300
Wichita, KS 67202

Kacirek Trust #2-5

Job Ticket: 60771

DST#: 4

ATTN: Robert Hendrix

Test Start: 2014.09.25 @ 05:21:00

Tool Information

Drill Pipe:	Length: 3971.00 ft	Diameter: 3.80 inches	Volume: 55.70 bbl	Tool Weight: 2500.00 lb
Heavy Wt. Pipe:	Length: ft	Diameter: inches	Volume: - bbl	Weight set on Packer: 25000.00 lb
Drill Collar:	Length: 207.34 ft	Diameter: 2.25 inches	Volume: 1.02 bbl	Weight to Pull Loose: 100000.0 lb
			<u>Total Volume: - bbl</u>	Tool Chased 0.00 ft
Drill Pipe Above KB:	17.34 ft			String Weight: Initial 84000.00 lb
Depth to Top Packer:	4189.00 ft			Final 90000.00 lb
Depth to Bottom Packer:	ft			
Interval between Packers:	51.00 ft			
Tool Length:	79.00 ft			
Number of Packers:	2	Diameter: 6.75 inches		

Tool Comments:

Tool Description

Tool Description	Length (ft)	Serial No.	Position	Depth (ft)	Accum. Lengths
Change Over Sub	1.00			4162.00	
Shut In Tool	5.00			4167.00	
Hydraulic tool	5.00		Inside	4172.00	
Jars	5.00			4177.00	
Safety Joint	3.00			4180.00	
Packer	5.00			4185.00	28.00 Bottom Of Top Packer
Packer	4.00			4189.00	
Stubb	1.00			4190.00	
Recorder	0.00	8647	Inside	4190.00	
Recorder	0.00	8372	Outside	4190.00	
Perforations	13.00			4203.00	
Change Over Sub	1.00			4204.00	
Drill Pipe	32.00			4236.00	
Change Over Sub	1.00			4237.00	
Bullnose	3.00			4240.00	51.00 Bottom Packers & Anchor

Total Tool Length: 79.00



**TRILOBITE
TESTING, INC**

DRILL STEM TEST REPORT

FLUID SUMMARY

Murfin Drlg, Co., Inc.

5-2s-36w Rawlins,KS

250 N. Water, STE 300
Wichita, KS 67202

Kacirek Trust #2-5

Job Ticket: 60771

DST#: 4

ATTN: Robert Hendrix

Test Start: 2014.09.25 @ 05:21:00

Mud and Cushion Information

Mud Type: Gel Chem

Cushion Type:

Oil API:

deg API

Mud Weight: 9.00 lb/gal

Cushion Length:

ft

Water Salinity:

ppm

Viscosity: 63.00 sec/qt

Cushion Volume:

bbl

Water Loss: 7.58 in³

Gas Cushion Type:

Resistivity: 0.00 ohm.m

Gas Cushion Pressure:

psig

Salinity: 700.00 ppm

Filter Cake: 2.00 inches

Recovery Information

Recovery Table

Length ft	Description	Volume bbl
798.00	MW 87%w , 13%m	9.305
578.00	MW 50%w , 50%m	8.108

Total Length: 1376.00 ft Total Volume: 17.413 bbl

Num Fluid Samples: 0

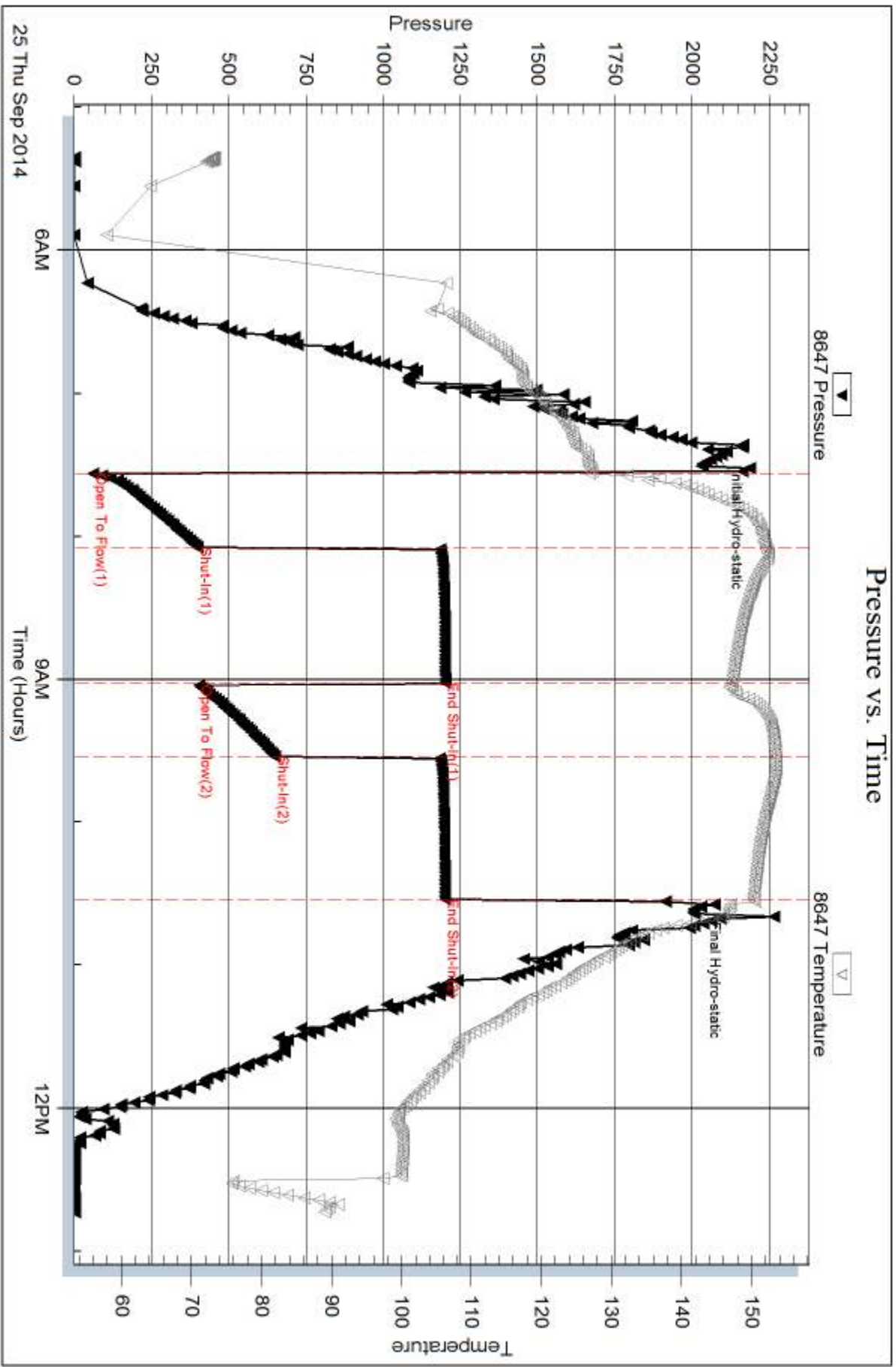
Num Gas Bombs: 0

Serial #:

Laboratory Name:

Laboratory Location:

Recovery Comments: RW .143 @ 82F Chlorides 32000ppm

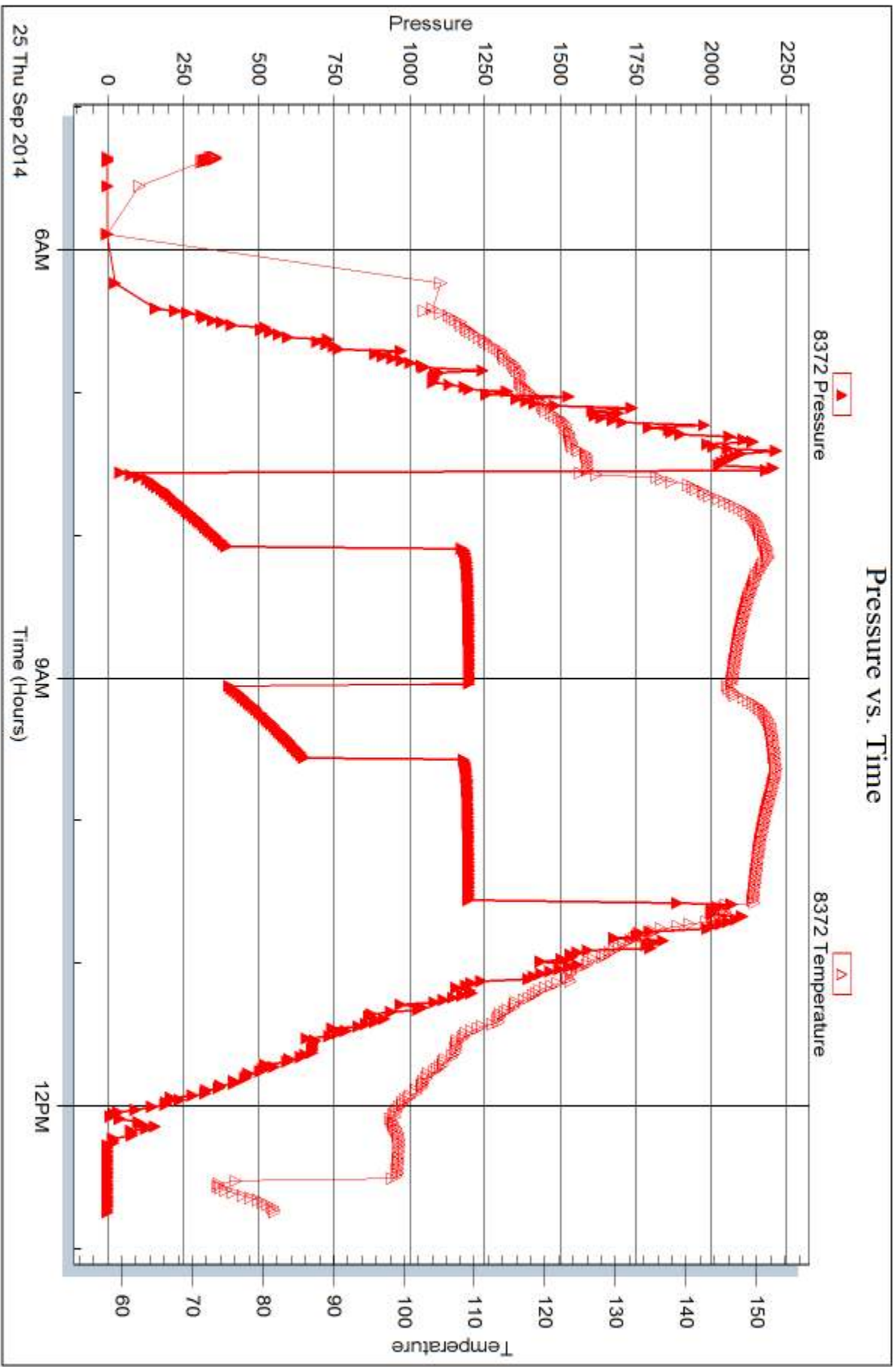


Serial #: 8372

Outside Murfin Dtg. Co., Inc.

Kacirek Trust #2-5

DST Test Number: 4



Triobite Testing, Inc

Ref. No: 60771

Printed: 2014, 10.01 @ 15:55:39



DRILL STEM TEST REPORT

Prepared For: **Murfin Drlg, Co., Inc.**

250 N. Water, STE 300
Wichita, KS 67202

ATTN: Robert Hendrix

Kacirek Trust #2-5

5-2s-36w Rawlins,KS

Start Date: 2014.09.25 @ 23:17:00

End Date: 2014.09.26 @ 07:27:00

Job Ticket #: 60772 DST #: 5

Trilobite Testing, Inc
1515 Commerce Parkway Hays, KS 67601
ph: 785-625-4778 fax: 785-625-5620

Printed: 2014.10.01 @ 15:55:16



**TRILOBITE
TESTING, INC**

DRILL STEM TEST REPORT

Murfin Drlg, Co., Inc.

5-2s-36w Rawlins,KS

250 N. Water, STE 300
Wichita, KS 67202

Kacirek Trust #2-5

Job Ticket: 60772

DST#: 5

ATTN: Robert Hendrix

Test Start: 2014.09.25 @ 23:17:00

GENERAL INFORMATION:

Formation: **LKC "G"**

Deviated: No Whipstock: ft (KB)

Time Tool Opened: 01:41:30

Time Test Ended: 07:27:00

Test Type: Conventional Bottom Hole (Initial)

Tester: Brandon Quintana

Unit No: 48

Interval: 4253.00 ft (KB) To 4310.00 ft (KB) (TVD)

Reference Elevations: 3241.00 ft (KB)

Total Depth: 4310.00 ft (KB) (TVD)

3230.00 ft (CF)

Hole Diameter: 7.88 inches Hole Condition: Fair

KB to GR/CF: 11.00 ft

Serial #: 8647

Inside

Press@RunDepth: 562.14 psig @ 4254.00 ft (KB)

Capacity: 8000.00 psig

Start Date: 2014.09.25

End Date:

2014.09.26

Last Calib.:

2014.09.26

Start Time: 23:17:01

End Time:

07:27:00

Time On Btm:

2014.09.26 @ 01:36:30

Time Off Btm:

2014.09.26 @ 04:47:30

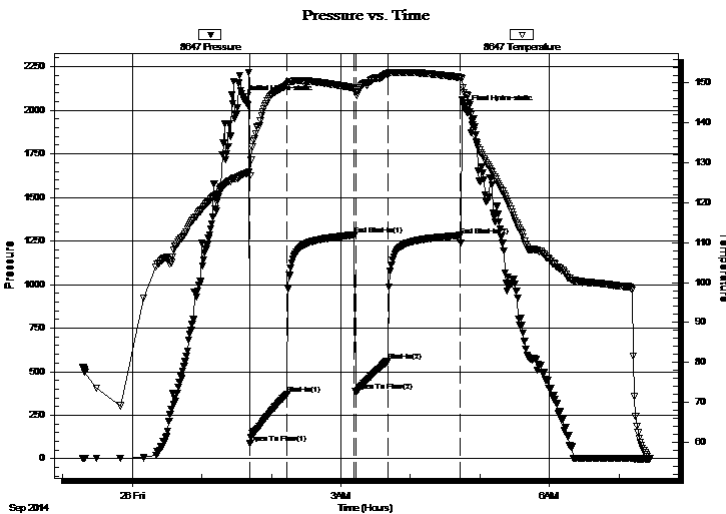
TEST COMMENT: 30 - IF - Opened w/ surface blow , built to B.o.B in 3 min.

60 - ISI - Return built to 10 1/2"

30 - FF - Blow built to B.o.B in 5 min.

60 - FSI - Return built to 1/2"

PRESSURE SUMMARY



Time (Min.)	Pressure (psig)	Temp (deg F)	Annotation
0	2061.85	127.23	Initial Hydro-static
5	89.80	126.79	Open To Flow (1)
37	372.60	149.46	Shut-In(1)
95	1286.50	148.78	End Shut-In(1)
96	385.30	147.86	Open To Flow (2)
124	562.14	152.37	Shut-In(2)
186	1282.11	151.42	End Shut-In(2)
191	2002.33	147.14	Final Hydro-static

Recovery

Length (ft)	Description	Volume (bbl)
240.00	GMCO 70%o, 20%m, 10%g	1.48
868.00	GO 85%o, 15%g	12.18
253.00	100%FO	3.55

Gas Rates

	Choke (inches)	Pressure (psig)	Gas Rate (Mcf/d)



**TRILOBITE
TESTING, INC**

DRILL STEM TEST REPORT

TOOL DIAGRAM

Murfin Drlg, Co., Inc.

5-2s-36w Rawlins,KS

250 N. Water, STE 300
Wichita, KS 67202

Kacirek Trust #2-5

Job Ticket: 60772

DST#: 5

ATTN: Robert Hendrix

Test Start: 2014.09.25 @ 23:17:00

Tool Information

Drill Pipe:	Length: 4033.00 ft	Diameter: 3.80 inches	Volume: 56.57 bbl	Tool Weight: 2500.00 lb
Heavy Wt. Pipe:	Length: ft	Diameter: inches	Volume: - bbl	Weight set on Packer: 25000.00 lb
Drill Collar:	Length: 207.34 ft	Diameter: 2.25 inches	Volume: 1.02 bbl	Weight to Pull Loose: 95000.00 lb
			<u>Total Volume: - bbl</u>	Tool Chased 0.00 ft
Drill Pipe Above KB:	15.34 ft			String Weight: Initial 84000.00 lb
Depth to Top Packer:	4253.00 ft			Final 88000.00 lb
Depth to Bottom Packer:	ft			
Interval between Packers:	57.00 ft			
Tool Length:	85.00 ft			
Number of Packers:	2	Diameter: 6.75 inches		

Tool Comments:

Tool Description

Tool Description	Length (ft)	Serial No.	Position	Depth (ft)	Accum. Lengths
Change Over Sub	1.00			4226.00	
Shut In Tool	5.00			4231.00	
Hydraulic tool	5.00		Inside	4236.00	
Jars	5.00			4241.00	
Safety Joint	3.00			4244.00	
Packer	5.00			4249.00	28.00 Bottom Of Top Packer
Packer	4.00			4253.00	
Stubb	1.00			4254.00	
Recorder	0.00	8647	Inside	4254.00	
Recorder	0.00	8372	Outside	4254.00	
Perforations	19.00			4273.00	
Change Over Sub	1.00			4274.00	
Drill Pipe	32.00			4306.00	
Change Over Sub	1.00			4307.00	
Bullnose	3.00			4310.00	57.00 Bottom Packers & Anchor

Total Tool Length: 85.00



**TRILOBITE
TESTING, INC**

DRILL STEM TEST REPORT

FLUID SUMMARY

Murfin Drlg, Co., Inc.

5-2s-36w Rawlins,KS

250 N. Water, STE 300
Wichita, KS 67202

Kacirek Trust #2-5

Job Ticket: 60772

DST#: 5

ATTN: Robert Hendrix

Test Start: 2014.09.25 @ 23:17:00

Mud and Cushion Information

Mud Type: Gel Chem

Cushion Type:

Oil API:

deg API

Mud Weight: 9.00 lb/gal

Cushion Length:

ft

Water Salinity:

ppm

Viscosity: 67.00 sec/qt

Cushion Volume:

bbbl

Water Loss: 7.19 in³

Gas Cushion Type:

Resistivity: 0.00 ohm.m

Gas Cushion Pressure:

psig

Salinity: 800.00 ppm

Filter Cake: 2.00 inches

Recovery Information

Recovery Table

Length ft	Description	Volume bbl
240.00	GMCO 70%o, 20%m, 10%g	1.478
868.00	GO 85%o, 15%g	12.176
253.00	100%FO	3.549

Total Length: 1361.00 ft Total Volume: 17.203 bbl

Num Fluid Samples: 0

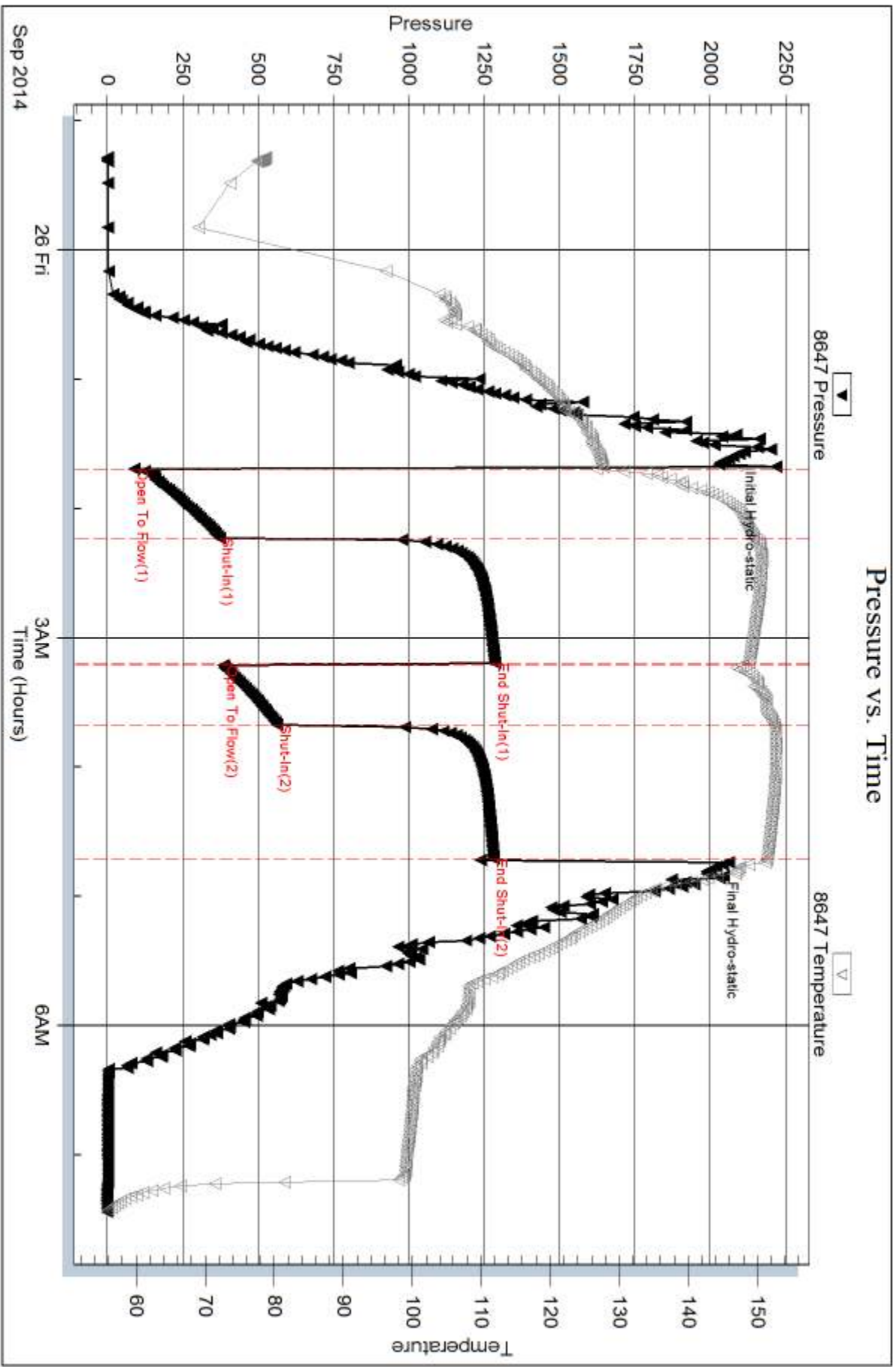
Num Gas Bombs: 0

Serial #:

Laboratory Name:

Laboratory Location:

Recovery Comments: Gravity 31 @ 80 Corrected = 33

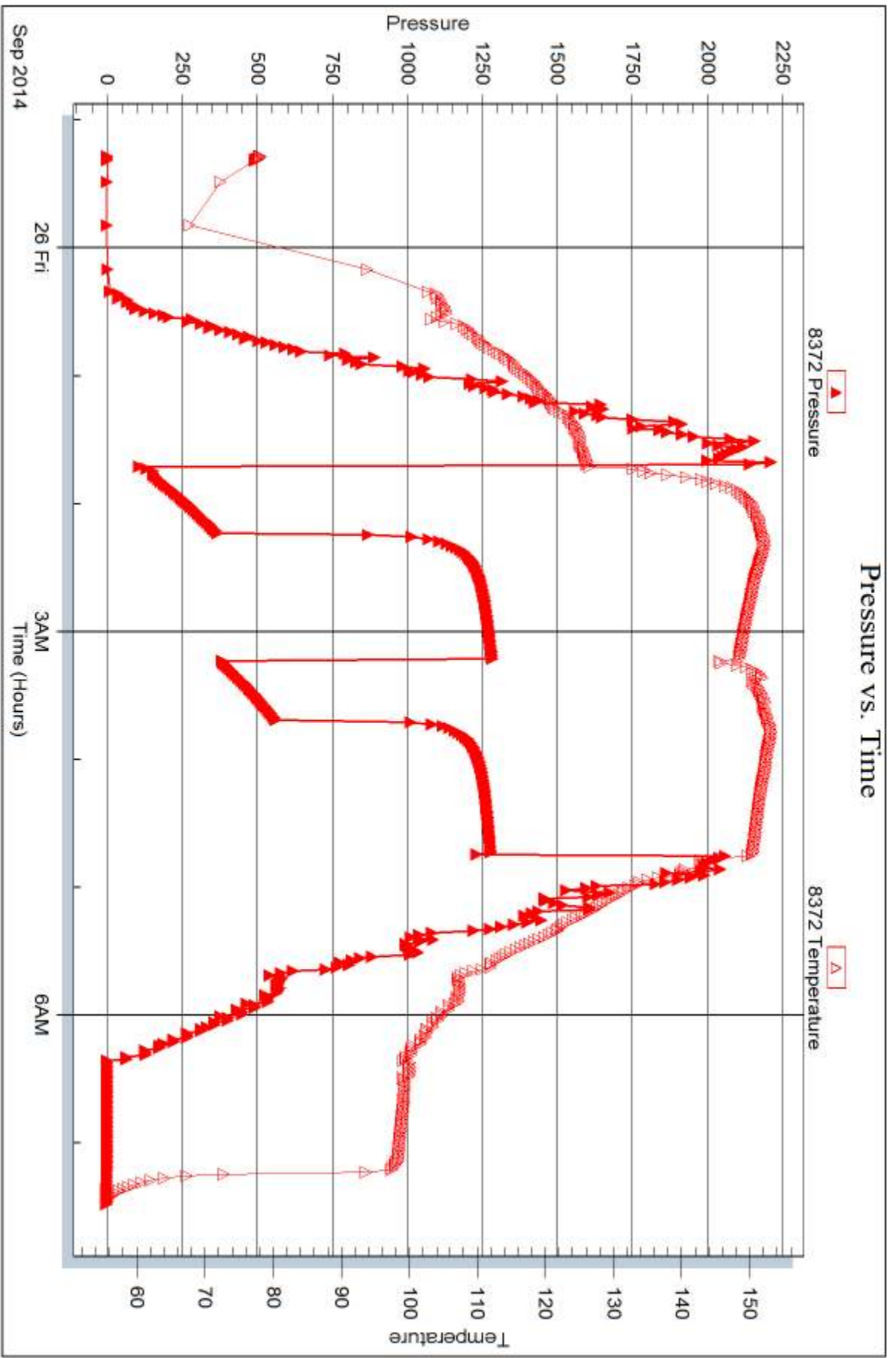


Serial #: 8372

Outside Murfin Dtg. Co., Inc.

Kacirek Trust #2-5

DST Test Number: 5



Trilobite Testing, Inc

Ref. No: 60772

Printed: 2014, 10.01 @ 15:55:17



DRILL STEM TEST REPORT

Prepared For: **Murfin Drlg, Co., Inc.**

250 N. Water, STE 300
Wichita, KS 67202

ATTN: Robert Hendrix

Kacirek Trust #2-5

5-2s-36w Rawlins,KS

Start Date: 2014.09.26 @ 19:26:00

End Date: 2014.09.26 @ 23:54:30

Job Ticket #: 60773 DST #: 6

Trilobite Testing, Inc
1515 Commerce Parkway Hays, KS 67601
ph: 785-625-4778 fax: 785-625-5620

Printed: 2014.10.01 @ 15:54:47

Murfin Drlg, Co., Inc.

5-2s-36w Rawlins,KS

Kacirek Trust #2-5

DST # 6

LKC "H,I,J"

2014.09.26



**TRILOBITE
TESTING, INC**

DRILL STEM TEST REPORT

TOOL DIAGRAM

Murfin Drlg, Co., Inc.

5-2s-36w Rawlins,KS

250 N. Water, STE 300
Wichita, KS 67202

Kacirek Trust #2-5

Job Ticket: 60773

DST#: 6

ATTN: Robert Hendrix

Test Start: 2014.09.26 @ 19:26:00

Tool Information

Drill Pipe:	Length: 4097.00 ft	Diameter: 3.80 inches	Volume: 57.47 bbl	Tool Weight: 2500.00 lb
Heavy Wt. Pipe:	Length: 0.00 ft	Diameter: inches	Volume: 0.00 bbl	Weight set on Packer: 25000.00 lb
Drill Collar:	Length: 207.34 ft	Diameter: 2.25 inches	Volume: 1.02 bbl	Weight to Pull Loose: 95000.00 lb
			<u>Total Volume: 58.49 bbl</u>	Tool Chased 0.00 ft
Drill Pipe Above KB:	24.34 ft			String Weight: Initial 84000.00 lb
Depth to Top Packer:	4308.00 ft			Final 84000.00 lb
Depth to Bottom Packer:	ft			
Interval between Packers:	76.00 ft			
Tool Length:	104.00 ft			
Number of Packers:	2	Diameter: 6.75 inches		

Tool Comments:

Tool Description

Length (ft) Serial No. Position Depth (ft) Accum. Lengths

Tool Description	Length (ft)	Serial No.	Position	Depth (ft)	Accum. Lengths
Change Over Sub	1.00			4281.00	
Shut In Tool	5.00			4286.00	
Hydraulic tool	5.00		Inside	4291.00	
Jars	5.00			4296.00	
Safety Joint	3.00			4299.00	
Packer	5.00			4304.00	28.00 Bottom Of Top Packer
Packer	4.00			4308.00	
Stubb	1.00			4309.00	
Recorder	0.00	8647	Inside	4309.00	
Recorder	0.00	8372	Outside	4309.00	
Perforations	7.00			4316.00	
Change Over Sub	1.00			4317.00	
Drill Pipe	63.00			4380.00	
Change Over Sub	1.00			4381.00	
Bullnose	3.00			4384.00	76.00 Bottom Packers & Anchor

Total Tool Length: 104.00



**TRILOBITE
TESTING, INC**

DRILL STEM TEST REPORT

FLUID SUMMARY

Murfin Drlg, Co., Inc.

5-2s-36w Rawlins,KS

250 N. Water, STE 300
Wichita, KS 67202

Kacirek Trust #2-5

Job Ticket: 60773

DST#: 6

ATTN: Robert Hendrix

Test Start: 2014.09.26 @ 19:26:00

Mud and Cushion Information

Mud Type: Gel Chem

Cushion Type:

Oil API:

deg API

Mud Weight: 9.00 lb/gal

Cushion Length:

ft

Water Salinity:

ppm

Viscosity: 73.00 sec/qt

Cushion Volume:

bbbl

Water Loss: 7.59 in³

Gas Cushion Type:

Resistivity: 0.00 ohm.m

Gas Cushion Pressure:

psig

Salinity: 700.00 ppm

Filter Cake: 2.00 inches

Recovery Information

Recovery Table

Length ft	Description	Volume bbl
70.00	100% mud w / oil in tool	0.344

Total Length: 70.00 ft Total Volume: 0.344 bbl

Num Fluid Samples: 0

Num Gas Bombs: 0

Serial #:

Laboratory Name:

Laboratory Location:

Recovery Comments: Misrun

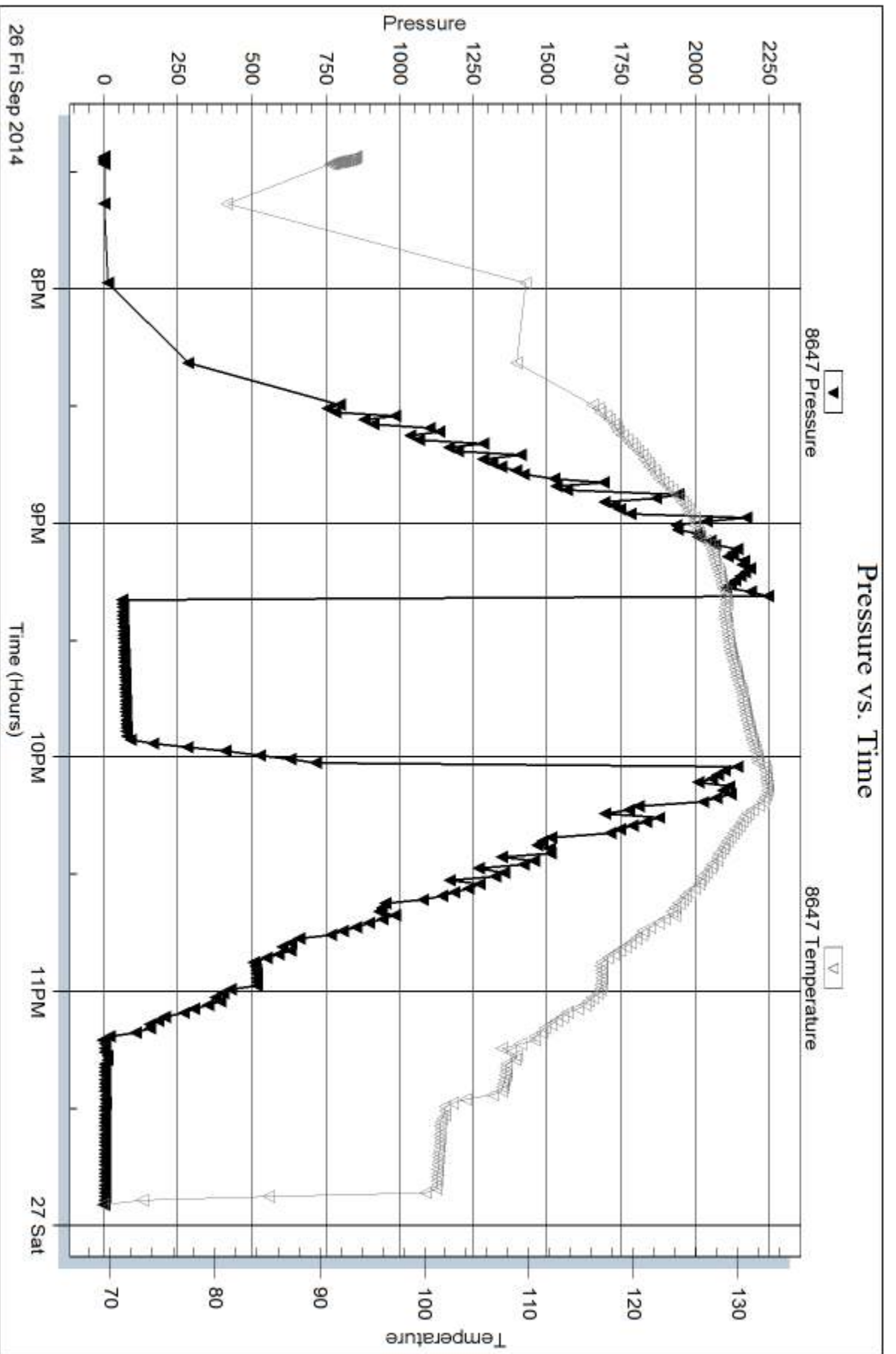
Serial #: 8647

Inside

Murfin Dtg. Co., Inc.

Kacirek Trust #2-5

DST Test Number: 6



Trilobite Testing, Inc

Ref. No: 60773

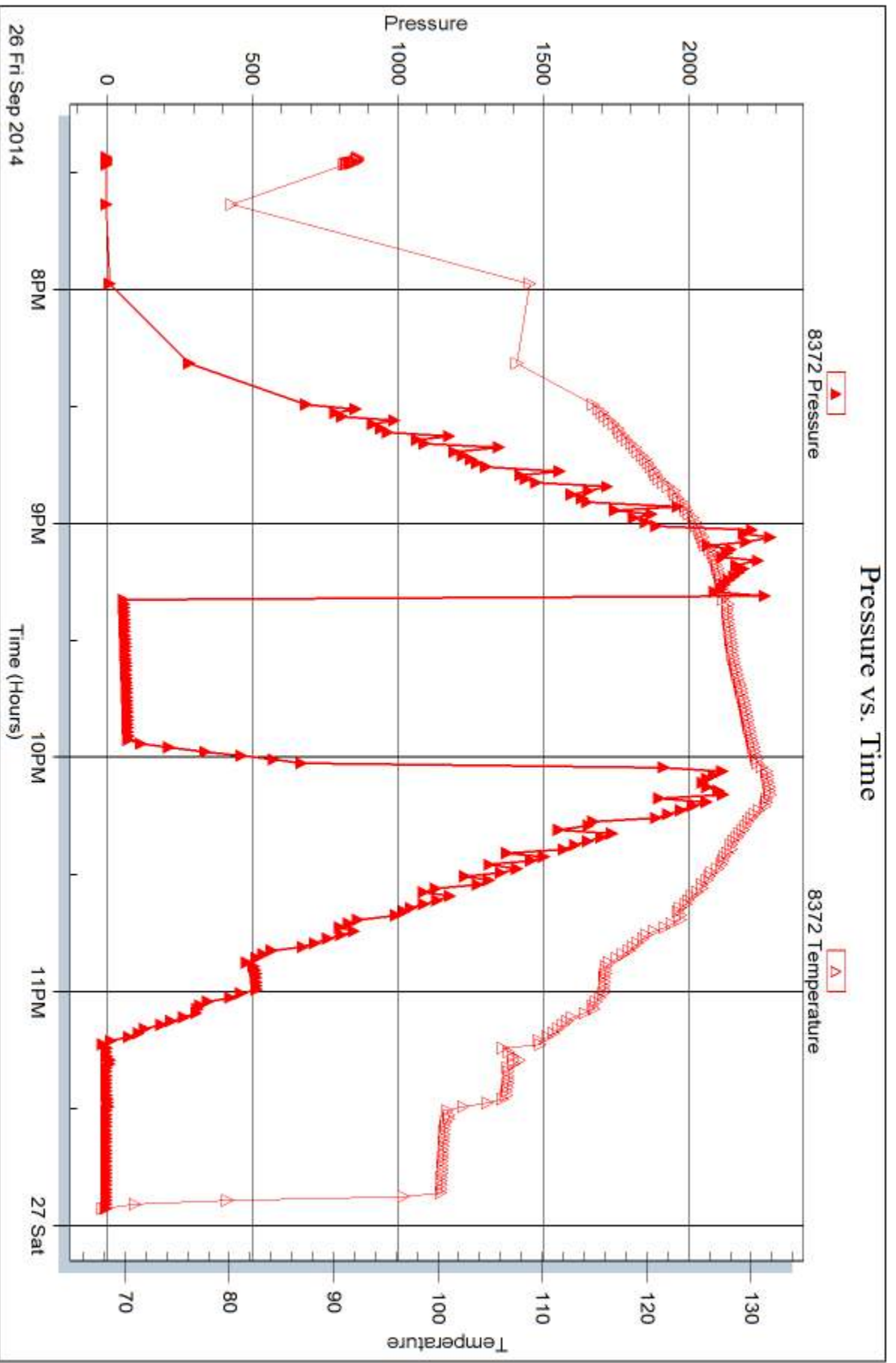
Printed: 2014, 10, 01 @ 15:54:48

Serial #: 8372

Outside Murfin Dtg. Co., Inc.

Kacirek Trust #2-5

DST Test Number: 6



Trilobite Testing, Inc

Ref. No: 60773

Printed: 2014, 10, 01 @ 15:54:48



DRILL STEM TEST REPORT

Prepared For: **Murfin Drlg, Co., Inc.**

250 N. Water, STE 300
Wichita, KS 67202

ATTN: Robert Hendrix

Kacirek Trust #2-5

5-2s-36w Rawlins,KS

Start Date: 2014.09.27 @ 12:17:00

End Date: 2014.09.28 @ 04:52:30

Job Ticket #: 60774 DST #: 7

Trilobite Testing, Inc
1515 Commerce Parkway Hays, KS 67601
ph: 785-625-4778 fax: 785-625-5620

Printed: 2014.10.01 @ 15:53:51

Murfin Drlg, Co., Inc.
5-2s-36w Rawlins,KS
Kacirek Trust #2-5
DST # 7
LKC "H,I,J"
2014.09.27



TRILOBITE TESTING, INC

DRILL STEM TEST REPORT

Murfin Drlg, Co., Inc.
 250 N. Water, STE 300
 Wichita, KS 67202
 ATTN: Robert Hendrix

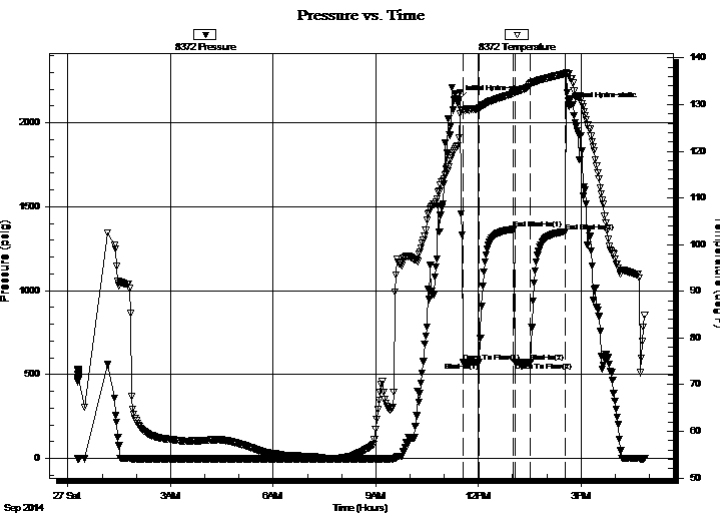
5-2s-36w Rawlins,KS
Kacirek Trust #2-5
 Job Ticket: 60774 **DST#: 7**
 Test Start: 2014.09.27 @ 12:17:00

GENERAL INFORMATION:

Formation: **LKC "H,I,J"**
 Deviated: No Whipstock: ft (KB)
 Time Tool Opened: 23:33:30
 Time Test Ended: 04:52:30
 Interval: **4326.00 ft (KB) To 4384.00 ft (KB) (TVD)**
 Total Depth: 4384.00 ft (KB) (TVD)
 Hole Diameter: 7.88 inches Hole Condition: Fair
 Test Type: Conventional Bottom Hole (Initial)
 Tester: Brandon Quintana
 Unit No: 48
 Reference Elevations: 3241.00 ft (KB)
 3230.00 ft (CF)
 KB to GR/CF: 11.00 ft

Serial #: 8372 Outside
 Press@RunDepth: 575.97 psig @ 4327.00 ft (KB) Capacity: 8000.00 psig
 Start Date: 2014.09.27 End Date: 2014.09.27 Last Calib.: 2014.09.27
 Start Time: 00:17:01 End Time: 16:52:30 Time On Btm: 2014.09.27 @ 11:25:30
 Time Off Btm: 2014.09.27 @ 14:39:30

TEST COMMENT: 30 - IF - Opened w/ surface blow , did not build
 60 - ISI - No Return
 30 - FF - No Blow MISRUN
 60 - FSI - No Return



PRESSURE SUMMARY			
Time (Min.)	Pressure (psig)	Temp (deg F)	Annotation
0	2139.17	122.92	Initial Hydro-static
8	575.53	128.71	Open To Flow (1)
36	575.79	129.23	Shut-In(1)
96	1365.62	132.36	End Shut-In(1)
98	575.80	132.53	Open To Flow (2)
126	575.97	134.41	Shut-In(2)
186	1351.60	136.60	End Shut-In(2)
194	2097.23	136.67	Final Hydro-static

Recovery		
Length (ft)	Description	Volume (bbl)
1056.00	100% mud	12.92

Gas Rates			
	Choke (inches)	Pressure (psig)	Gas Rate (Mcf/d)



**TRILOBITE
TESTING, INC**

DRILL STEM TEST REPORT

TOOL DIAGRAM

Murfin Drlg, Co., Inc.

5-2s-36w Rawlins,KS

250 N. Water, STE 300
Wichita, KS 67202

Kacirek Trust #2-5

Job Ticket: 60774

DST#: 7

ATTN: Robert Hendrix

Test Start: 2014.09.27 @ 12:17:00

Tool Information

Drill Pipe:	Length: 4122.00 ft	Diameter: 3.80 inches	Volume: 57.82 bbl	Tool Weight: 2500.00 lb
Heavy Wt. Pipe:	Length: ft	Diameter: inches	Volume: - bbl	Weight set on Packer: 25000.00 lb
Drill Collar:	Length: 207.34 ft	Diameter: 2.25 inches	Volume: 1.02 bbl	Weight to Pull Loose: 100000.0 lb
			<u>Total Volume: - bbl</u>	Tool Chased 0.00 ft
Drill Pipe Above KB:	31.34 ft			String Weight: Initial 84000.00 lb
Depth to Top Packer:	4326.00 ft			Final 90000.00 lb
Depth to Bottom Packer:	ft			
Interval between Packers:	58.00 ft			
Tool Length:	86.00 ft			
Number of Packers:	2	Diameter: 6.75 inches		

Tool Comments:

Tool Description

Tool Description	Length (ft)	Serial No.	Position	Depth (ft)	Accum. Lengths
Change Over Sub	1.00			4299.00	
Shut In Tool	5.00			4304.00	
Hydraulic tool	5.00		Inside	4309.00	
Jars	5.00			4314.00	
Safety Joint	3.00			4317.00	
Packer	5.00			4322.00	28.00 Bottom Of Top Packer
Packer	4.00			4326.00	
Stubb	1.00			4327.00	
Recorder	0.00	8647	Inside	4327.00	
Recorder	0.00	8372	Outside	4327.00	
Perforations	20.00			4347.00	
Change Over Sub	1.00			4348.00	
Drill Pipe	32.00			4380.00	
Change Over Sub	1.00			4381.00	
Bullnose	3.00			4384.00	58.00 Bottom Packers & Anchor

Total Tool Length: 86.00



**TRILOBITE
TESTING, INC**

DRILL STEM TEST REPORT

FLUID SUMMARY

Murfin Drlg, Co., Inc.

5-2s-36w Rawlins,KS

250 N. Water, STE 300
Wichita, KS 67202

Kacirek Trust #2-5

Job Ticket: 60774

DST#: 7

ATTN: Robert Hendrix

Test Start: 2014.09.27 @ 12:17:00

Mud and Cushion Information

Mud Type: Gel Chem

Cushion Type:

Oil API:

deg API

Mud Weight: 9.00 lb/gal

Cushion Length:

ft

Water Salinity:

ppm

Viscosity: 73.00 sec/qt

Cushion Volume:

bbl

Water Loss: 7.59 in³

Gas Cushion Type:

Resistivity: 0.00 ohm.m

Gas Cushion Pressure:

psig

Salinity: 700.00 ppm

Filter Cake: 2.00 inches

Recovery Information

Recovery Table

Length ft	Description	Volume bbl
1056.00	100%mud	12.924

Total Length: 1056.00 ft Total Volume: 12.924 bbl

Num Fluid Samples: 0

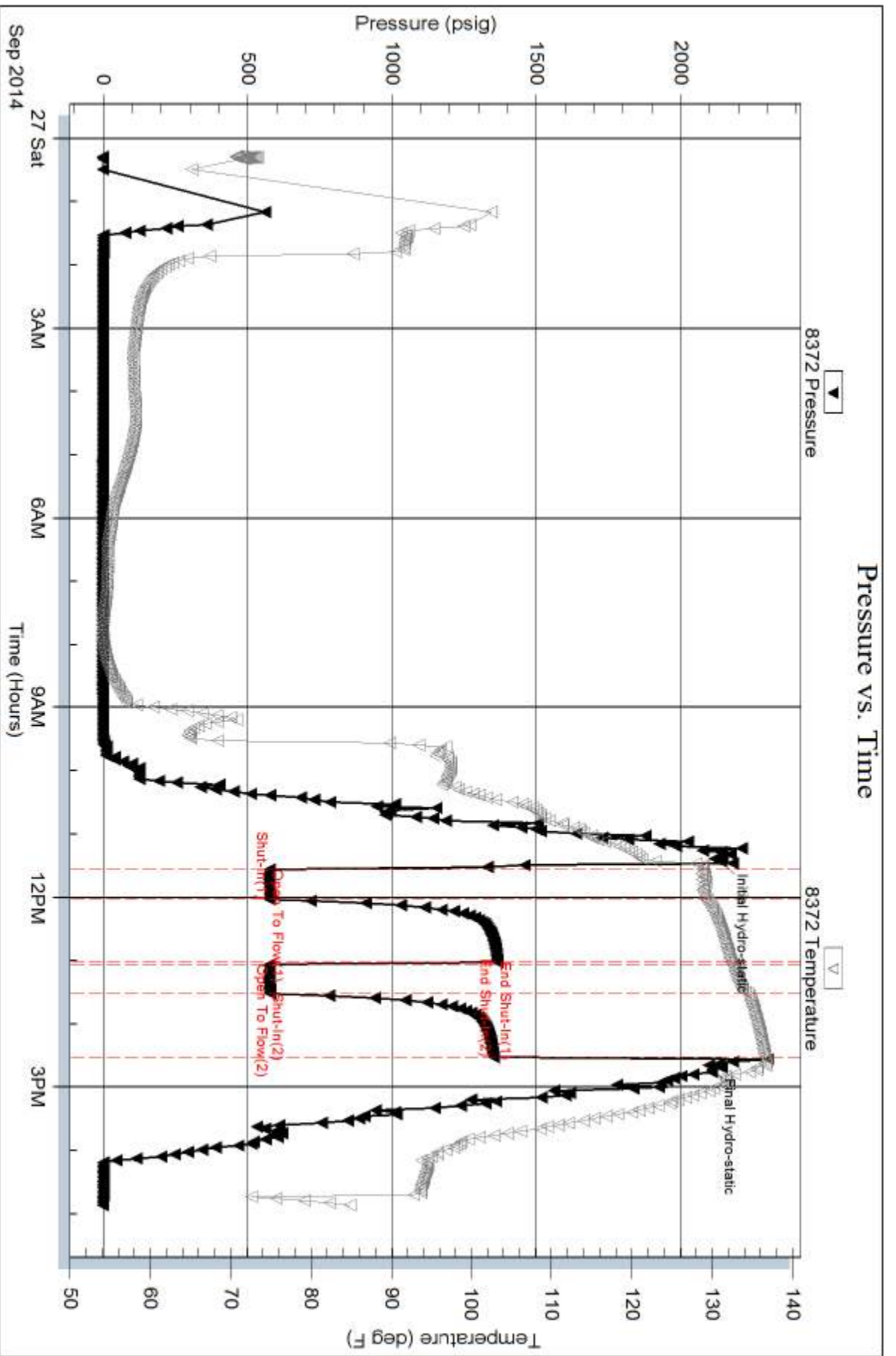
Num Gas Bombs: 0

Serial #:

Laboratory Name:

Laboratory Location:

Recovery Comments: MISRUN



Serial #: 8647

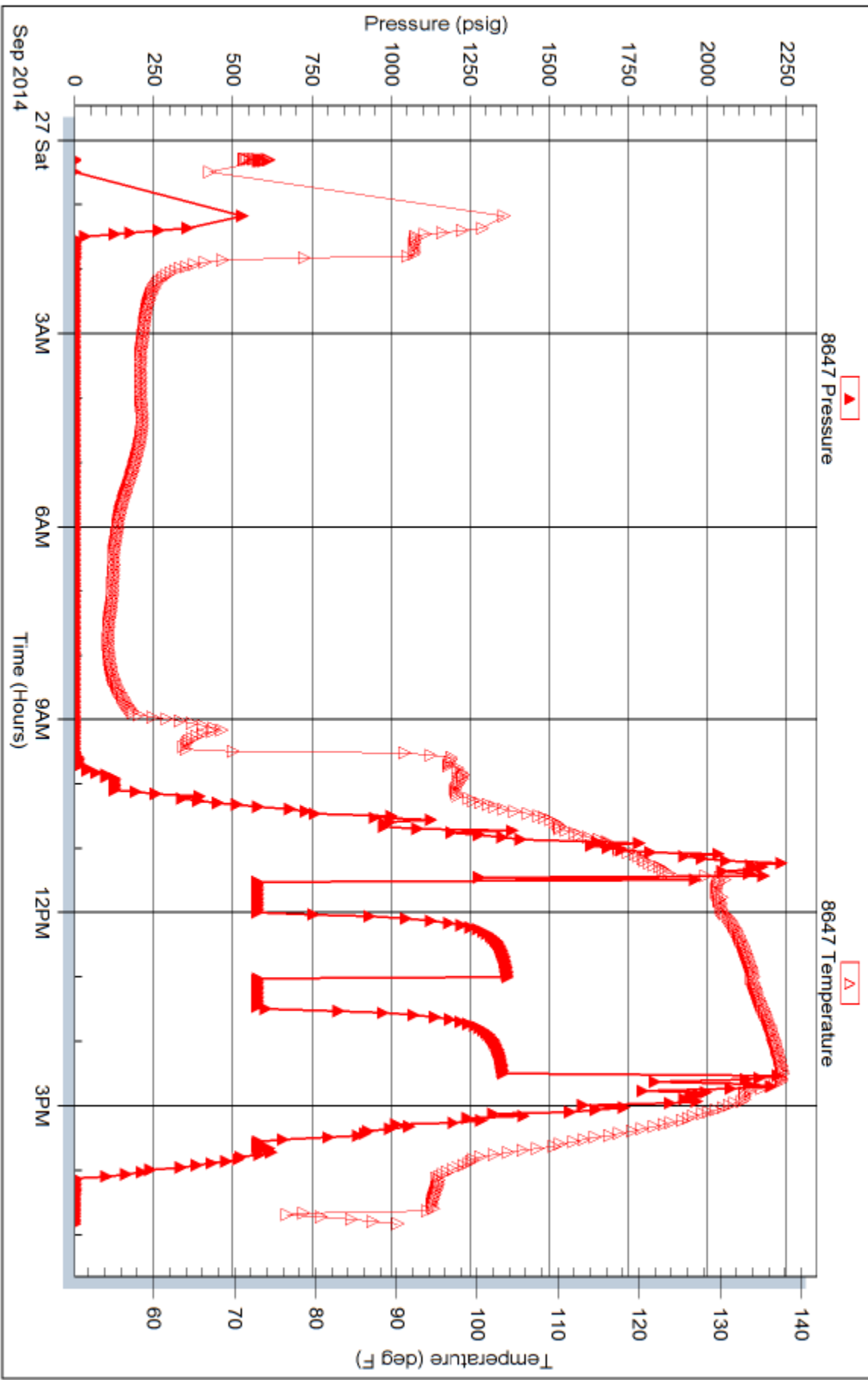
Inside

Murfin Dtg. Co., Inc.

Kacirek Trust #2-5

DST Test Number: 7

Pressure vs. Time



Trilobite Testing, Inc

Ref. No: 60774

Printed: 2014.10.01 @ 15:53:53



TRILOBITE TESTING INC.

1515 Commerce Parkway • Hays, Kansas 67601

Test Ticket

NO. **60768**

Well Name & No. Kacirek Trust #2-5 Test No. 1 Date 9-22-14
 Company Murfin Drilling Co., Inc. Elevation 3241 KB 3230 GL
 Address 250 N. Water, STE 300 Wichita, KS 67202
 Co. Rep / Geo. Robert Hendrix Rig Murfin #2
 Location: Sec. 5 Twp. 2S Rge. 36W Co. Rawlins State KS

Interval Tested 3884-3949 Zone Tested Stotler
 Anchor Length 65' Drill Pipe Run 3655 Mud Wt. 9.2
 Top Packer Depth 3879 Drill Collars Run 207.34 Vis 76
 Bottom Packer Depth 3884 Wt. Pipe Run - WL 9.2
 Total Depth 3949 Chlorides 600 ppm System LCM 8

Blow Description IF-Opened w/ surface blow, didn't build
ISI- No Return
FF- No Blow
FSI- No Return

Rec	Feet of	%gas	%oil	%water	%mud
<u>2</u>	<u>Mud</u>			<u>100</u>	
Rec	Feet of	%gas	%oil	%water	%mud
Rec	Feet of	%gas	%oil	%water	%mud
Rec	Feet of	%gas	%oil	%water	%mud
Rec	Feet of	%gas	%oil	%water	%mud

Rec Total 2 BHT 133 Gravity _____ API RW _____ @ _____ °F Chlorides _____ ppm

(A) Initial Hydrostatic 2011 Test 1150 T-On Location 1:52 PM
 (B) First Initial Flow 27 Jars 250 T-Started 2:16 PM
 (C) First Final Flow 25 Safety Joint 75 T-Open 4:54 PM
 (D) Initial Shut-In 166 Circ Sub _____ T-Pulled 7:54 PM
 (E) Second Initial Flow 30 Hourly Standby _____ T-Out 9:54 PM
 (F) Second Final Flow 45 Mileage 110 R.T. 170.50 Comments _____
 (G) Final Shut-In 121 Sampler _____
 (H) Final Hydrostatic 1934 Straddle _____ Ruined Shale Packer _____
 Shale Packer _____ Ruined Packer _____
 Extra Packer _____ Extra Copies _____
 Initial Open 30 Extra Recorder _____ Sub Total 0
 Initial Shut-In 60 Day Standby _____ Total 1645.50
 Final Flow 30 Accessibility _____ MP/DST Disc't _____
 Final Shut-In 60 Sub Total 1645.50

Approved By [Signature] Our Representative Bud Oit

Trilobite Testing Inc. shall not be liable for damaged of any kind of the property or personnel of the one for whom a test is made, or for any loss suffered or sustained, directly or indirectly, through the use of its equipment, or its statements or opinion concerning the results of any test, tools lost or damaged in the hole shall be paid for at cost by the party for whom the test is made.



TRILOBITE TESTING INC.

1515 Commerce Parkway • Hays, Kansas 67601

Test Ticket

NO. **60769**

Well Name & No. Kacirek Trust #2-5 Test No. 2 Date 9-23-14
 Company Murfin Drlg. Co., Inc. Elevation 3241 KB 3230 GL
 Address 250 N. Water, STE 300 Wichita, KS 67202
 Co. Rep / Geo. Robert Hendrix Rig Murfin #2
 Location: Sec. 5 Twp. 2S Rge. 36W Co. Rawlins State KS

Interval Tested 4033 - 4087 Zone Tested Oread
 Anchor Length 54' Drill Pipe Run 3814 Mud Wt. 9.2
 Top Packer Depth 4028 Drill Collars Run 207.34 Vis 76
 Bottom Packer Depth 4033 Wt. Pipe Run — WL 9.2
 Total Depth 4087 Chlorides 600 ppm System LCM 8
 Blow Description IF - Opened w/ surface blow, built to B.o.B in 13 min.
ISI - No Return
FF Blow built to B.o.B in 15 min.
FSI - Return built to 3 in.

Rec	Feet of	%gas	%oil	%water	%mud
<u>90</u>	<u>oil</u>		<u>100</u>		
<u>248</u>	<u>OCM</u>		<u>20</u>		<u>80</u>
<u>184</u>	<u>WOCM</u>		<u>5</u>	<u>75</u>	<u>20</u>
<u>180</u>	<u>MW</u>			<u>90</u>	<u>10</u>

Rec Total 702 BHT _____ Gravity N/A API RW 116 @ 85 °F Chlorides 43000 ppm

(A) Initial Hydrostatic 1985 Test 1250 T-On Location 12:35 PM
 (B) First Initial Flow 64 Jars 250 T-Started 12:46 PM
 (C) First Final Flow 204 Safety Joint 75 T-Open 2:44 PM
 (D) Initial Shut-In 1146 Circ Sub _____ T-Pulled 6:44 PM
 (E) Second Initial Flow 197 Hourly Standby _____ T-Out 9:34 PM
 (F) Second Final Flow 341 Mileage 110 R.T. 170.50 Comments _____
 (G) Final Shut-In 1140 Sampler _____
 (H) Final Hydrostatic 1936 Straddle _____ Ruined Shale Packer _____
 Shale Packer _____ Ruined Packer _____
 Extra Packer _____ Extra Copies _____
 Extra Recorder _____ Sub Total 0
 Day Standby _____ Total 1745.50
 Accessibility _____ MP/DST Disc't _____
 Sub Total 1745.50

Approved By R. D. [Signature] Our Representative B. [Signature]
 Trilobite Testing Inc. shall not be liable for damaged of any kind of the property or personnel of the one for whom a test is made, or for any loss suffered or sustained, directly or indirectly, through the use of its equipment, or its statements or opinion concerning the results of any test, tools lost or damaged in the hole shall be paid for at cost by the party for whom the test is made.



TRILOBITE TESTING INC.

1515 Commerce Parkway • Hays, Kansas 67601

Test Ticket

NO. **60770**

Well Name & No. Kacirek Trust #2-5 Test No. 3 Date 9-24-14
 Company Murfin Drlg. Co., Inc. Elevation 3241 KB 3230 GL
 Address 250 N. Water, STE 300 Wichita, KS 67202
 Co. Rep / Geo. Robert Hendrix Rig Murfin #2
 Location: Sec. 5 Twp. 25 Rge. 36w Co. Rawlins State KS

Interval Tested 4110 - 4200 Zone Tested Lansing
 Anchor Length 90' Drill Pipe Run 3907 Mud Wt. 9.1
 Top Packer Depth 4105 Drill Collars Run 207.34 Vis 90
 Bottom Packer Depth 4110 Wt. Pipe Run — WL 6.8
 Total Depth 4200 Chlorides 600 ppm System LCM 8

Blow Description IF - Opened w/ surface blow, built to 3 3/4"
ISI - No Return
FF - Blow built to B.O.B in 55 min.
FSI - No Return

Rec	Feet of	%gas	%oil	%water	%mud
<u>100</u>	<u>Co</u>		<u>100</u>		
<u>80</u>	<u>60cm</u>	<u>30%</u>	<u>30</u>		<u>40</u>

Rec Total 180 BHT 136 Gravity 37 API RW @ °F Chlorides ppm

(A) Initial Hydrostatic <u>2070</u>	<input checked="" type="checkbox"/> Test <u>1250</u>	T-On Location <u>12:24 PM</u>
(B) First Initial Flow <u>28</u>	<input checked="" type="checkbox"/> Jars <u>250</u>	T-Started <u>12:34 PM</u>
(C) First Final Flow <u>64</u>	<input checked="" type="checkbox"/> Safety Joint <u>75</u>	T-Open <u>2:49 PM</u>
(D) Initial Shut-In <u>1239</u>	<input type="checkbox"/> Circ Sub	T-Pulled <u>6:49 PM</u>
(E) Second Initial Flow <u>50</u>	<input type="checkbox"/> Hourly Standby	T-Out <u>9:01 PM</u>
(F) Second Final Flow <u>86</u>	<input checked="" type="checkbox"/> Mileage <u>110 R.T 170.50</u>	Comments
(G) Final Shut-In <u>1204</u>	<input type="checkbox"/> Sampler	
(H) Final Hydrostatic <u>2008</u>	<input type="checkbox"/> Straddle	<input type="checkbox"/> Ruined Shale Packer

Initial Open 30
 Initial Shut-In 60
 Final Flow 60
 Final Shut-In 90

Shale Packer
 Extra Packer
 Extra Recorder
 Day Standby
 Accessibility

Sub Total 1745.50

Sub Total 1745.50

Approved By R.D. Wiley Our Representative Burd QT

Trilobite Testing Inc. shall not be liable for damaged of any kind of the property or personnel of the one for whom a test is made, or for any loss suffered or sustained, directly or indirectly, through the use of its equipment, or its statements or opinion concerning the results of any test, tools lost or damaged in the hole shall be paid for at cost by the party for whom the test is made.



TRILOBITE TESTING INC.

1515 Commerce Parkway • Hays, Kansas 67601

Test Ticket

NO. **60771**

Well Name & No. Kacirek Trust #2-5 Test No. 4 Date 9-25-14
 Company Murfin Drilg. Co., Inc. Elevation 3241 KB 3230 GL
 Address 250 N. Water, STE 300 Wichita, KS 67202
 Co. Rep / Geo. Robert Hendrix Rig Murfin #2
 Location: Sec. 5 Twp. 2S Rge. 36W Co. Rawlins State KS

Interval Tested 4189-4240 Zone Tested LKC "D"
 Anchor Length 51' Drill Pipe Run 3971 Mud Wt. 9.3
 Top Packer Depth 4184 Drill Collars Run 207.34 Vis 63
 Bottom Packer Depth 4189 Wt. Pipe Run — WL 7.6
 Total Depth 4240 Chlorides 700 ppm System LCM 10

Blow Description IF- Opened w/ surface blow, built to B.O.B in 5 min
ISI- No Return
FF- Blow built to B.O.B in 5 min.
FSI- No Return

Rec	Feet of	oil in tool	%gas	%oil	%water	%mud
<u>578</u>	<u>MW</u>	<u>oil in tool</u>			<u>50%</u>	<u>50%</u>
<u>798</u>	<u>MW</u>				<u>87%</u>	<u>13%</u>

Rec Total 1376 BHT 150 Gravity — API RW .143 @ 82 °F Chlorides 32,000 ppm

(A) Initial Hydrostatic 2077 Test 1250 T-On Location 4:50 AM
 (B) First Initial Flow 62 Jars 250 T-Started 5:21 AM
 (C) First Final Flow 319 Safety Joint 75 T-Open 7:35 AM
 (D) Initial Shut-In 1201 Circ Sub — T-Pulled 10:35 AM
 (E) Second Initial Flow 403 Hourly Standby — T-Out 12:41 PM
 (F) Second Final Flow 649 Mileage 110 R.T. 170.50 Comments —
 (G) Final Shut-In 1200 Sampler —
 (H) Final Hydrostatic 2006 Straddle — Ruined Shale Packer —
 Shale Packer — Ruined Packer —
 Extra Packer — Extra Copies —
 Extra Recorder — Sub Total 0
 Day Standby — Total 1745.50
 Accessibility — MP/DST Disc't —
 Sub Total 1745.50

Approved By [Signature] Our Representative Bruce Oit

Trilobite Testing Inc. shall not be liable for damaged or any kind of the property or personnel of the one for whom a test is made, or for any loss suffered or sustained, directly or indirectly, through the use of its equipment, or its statements or opinion concerning the results of any test, tools lost or damaged in the hole shall be paid for at cost by the party for whom the test is made.



TRILOBITE TESTING INC.

1515 Commerce Parkway • Hays, Kansas 67601

Test Ticket

NO. **60772**

4/10

Well Name & No. Kacirek^{Trust} #2-5 Test No. 5 Date 9-25-14
 Company Murfin Drlg. Co., Inc. Elevation 3241 KB 3230 GL
 Address 250 N. Water, STE 300 Wichita, KS 67202
 Co. Rep / Geo. Robert Hendrix Rig Murfin #2
 Location: Sec. 5 Twp. 2S Rge. 36w Co. Rawlins State KS

Interval Tested 4253-4310 Zone Tested LKC "G"
 Anchor Length 57' Drill Pipe Run 4033 Mud Wt. 9.3
 Top Packer Depth 4248 Drill Collars Run 207.34 Vis 67
 Bottom Packer Depth 4253 Wt. Pipe Run — WL 7.2
 Total Depth 4310 Chlorides 800 ppm System LCM 10

Blow Description IF-Opened w/ surface blow. built to B.o.B in 3 min.
ISI- Return built to 10 1/2"
FF- Blow built to B.o.B in 5 min.
FSI- Return built to 1/2"

Rec	Feet of	%gas	%oil	%water	%mud
<u>253</u>	<u>EO</u>		<u>100</u>		
<u>868</u>	<u>60</u>	<u>15</u>	<u>85</u>		
<u>240</u>	<u>GMCO</u>	<u>10</u>	<u>70</u>		<u>20</u>
Rec	Feet of	%gas	%oil	%water	%mud
Rec	Feet of	%gas	%oil	%water	%mud

Rec Total 1361 BHT 151 Gravity 33 API RW @ °F Chlorides ppm

(A) Initial Hydrostatic 2061 Test 1250 T-On Location 10:56 PM
 (B) First Initial Flow 89 Jars 250 T-Started 11:17 PM
 (C) First Final Flow 372 Safety Joint 75 T-Open 1:43 AM
 (D) Initial Shut-In 1286 Circ Sub _____ T-Pulled 4:43 AM
 (E) Second Initial Flow 385 Hourly Standby _____ T-Out 7:29 AM
 (F) Second Final Flow 562 Mileage 110 R.T. 170.50 Comments _____
 (G) Final Shut-In 1282 Sampler _____
 (H) Final Hydrostatic 2062 Straddle _____ Ruined Shale Packer _____
 Shale Packer _____ Ruined Packer _____
 Extra Packer _____ Extra Copies _____
 Extra Recorder _____ Sub Total 0
 Day Standby _____ Total 1745.50
 Accessibility _____ MP/DST Disc't _____

Initial Open 30
 Initial Shut-In 60
 Final Flow 30
 Final Shut-In 60

Sub Total 1745.50

Approved By

RKD. Riley

Our Representative

Brad Pitt

Trilobite Testing Inc. shall not be liable for damaged of any kind of the property or personnel of the one for whom a test is made, or for any loss suffered or sustained, directly or indirectly, through the use of its equipment, or its statements or opinion concerning the results of any test, tools lost or damaged in the hole shall be paid for at cost by the party for whom the test is made.



TRILOBITE TESTING INC.

1515 Commerce Parkway • Hays, Kansas 67601

Test Ticket

NO. 60773

Well Name & No. Kacirek Trust #2-S Test No. 6 Date 9-26-14
 Company Murfin Drlg. Co., Inc. Elevation 3241 KB 3230 GL
 Address 250 N. Water, STE 300 Wichita, KS 67202
 Co. Rep / Geo. Robert Hendrix Rig Murfin #2
 Location: Sec. 5 Twp. 2S Rge. 36W Co. Rawlins State KS

Interval Tested 4308-4384 Zone Tested LKC "H.I.J"
 Anchor Length 76' Drill Pipe Run 4097 Mud Wt. 9.2
 Top Packer Depth 4303 Drill Collars Run 207.34 Vis 73
 Bottom Packer Depth 4308 Wt. Pipe Run — WL 7.6
 Total Depth 4384 Chlorides 700 ppm System LCM 8

Blow Description IF-
ISI-
FF-
FSI-

MIS RUN

Rec	Feet of	%gas	%oil	%water	%mud
<u>70</u>	<u>Mud w/ oil in tool</u>				<u>100%</u>
Rec	Feet of	%gas	%oil	%water	%mud
Rec	Feet of	%gas	%oil	%water	%mud
Rec	Feet of	%gas	%oil	%water	%mud
Rec	Feet of	%gas	%oil	%water	%mud

Rec Total 70 BHT _____ Gravity _____ API RW _____ @ _____ °F Chlorides _____ ppm

(A) Initial Hydrostatic Test 1050 T-On Location 6:57 PM
 (B) First Initial Flow Jars 250 T-Started 7:26 PM
 (C) First Final Flow Safety Joint 75 T-Open ~~10:06 PM~~
 (D) Initial Shut-In Circ Sub _____ T-Pulled 10:06 PM
 (E) Second Initial Flow Hourly Standby _____ T-Out 11:56 PM
 (F) Second Final Flow Mileage 110 R.T. 170.50 Comments _____
 (G) Final Shut-In Sampler _____
 (H) Final Hydrostatic Straddle _____

Initial Open 30 Ruined Shale Packer _____
 Initial Shut-In 60 Ruined Packer 320
 Final Flow — Extra Copies _____
 Final Shut-In — Extra Recorder _____ Sub Total 0
 Day Standby _____ Total 1865.50
 Accessibility _____ MP/DST Disc't _____
 Sub Total 1545.50

Approved By _____ Our Representative Burditt

Trilobite Testing Inc. shall not be liable for damaged of any kind of the property or personnel of the one for whom a test is made, or for any loss suffered or sustained, directly or indirectly, through the use of its equipment, or its statements or opinion concerning the results of any test, tools lost or damaged in the hole shall be paid for at cost by the party for whom the test is made.



TRILOBITE TESTING INC.

1515 Commerce Parkway • Hays, Kansas 67601

Test Ticket

NO. **60774**

Well Name & No. Kacirek Trust #2-5 Test No. 7 Date 9-26-14
 Company Murfin Drilg. Co., Inc. Elevation 3241 KB 3230 GL
 Address 250 N. Water, STE 350 Wichita, KS 67202
 Co. Rep / Geo. Robert Hendrix Rig Murfin #2
 Location: Sec. 5 Twp. 2s Rge. 36w Co. Rawlins State KS

Interval Tested 4326-4384 Zone Tested LKC "H,I,J"
 Anchor Length 58' Drill Pipe Run 4122 Mud Wt. 9.2
 Top Packer Depth 4321 Drill Collars Run 207.34 Vis 73
 Bottom Packer Depth 4326 Wt. Pipe Run - WL 7.6
 Total Depth 4384 Chlorides 700 ppm System LCM 8

Blow Description IF-Opened w/ surface blow, did not build
ISI- No Return
FF- No Blow
FSI- No Return

MIS RUN

Rec	Feet of	%gas	%oil	%water	%mud
<u>1056</u>	<u>Mud</u>			<u>100</u>	
Rec	Feet of	%gas	%oil	%water	%mud
Rec	Feet of	%gas	%oil	%water	%mud
Rec	Feet of	%gas	%oil	%water	%mud
Rec	Feet of	%gas	%oil	%water	%mud

Rec Total _____ BHT 136 Gravity _____ API RW _____ @ _____ °F Chlorides _____ ppm

(A) Initial Hydrostatic 2139 Test 1050 T-On Location 6:57 PM
 (B) First Initial Flow 575 Jars 250 T-Started 12:17 AM
 (C) First Final Flow 575 Safety Joint 75 T-Open 11:33 AM
 (D) Initial Shut-In 1365 Circ Sub _____ T-Pulled 2:33 PM
 (E) Second Initial Flow 575 Hourly Standby _____ T-Out 4:50 PM
 (F) Second Final Flow 575 Mileage 10. R.T. Comments _____
 (G) Final Shut-In 1351 Sampler _____
 (H) Final Hydrostatic 2097 Straddle _____ Ruined Shale Packer _____
 Shale Packer _____ Ruined Packer _____
 Extra Packer _____ Extra Copies _____
 Extra Recorder _____ Sub Total 0
 Day Standby _____ Total 1375
 Accessibility _____ MP/DST Disc't _____
 Sub Total 1375

Approved By [Signature]

Our Representative Bud Q.T.