



TRILOBITE TESTING, INC.

DRILL STEM TEST REPORT

Samuel Gary Jr. & Associates

35/3s/36w Rawlins KS

1515 Wynkoop STE 700
Denver, CO 80202

Fisher Cattle #2-35

Job Ticket: 60069

DST#: 3

ATTN: Chris Mitchell

Test Start: 2014.09.07 @ 09:21:00

GENERAL INFORMATION:

Formation: **LKC "C - D"**

Deviated: No Whipstock: ft (KB)

Time Tool Opened: 12:11:45

Time Test Ended: 18:46:00

Test Type: Conventional Bottom Hole (Reset)

Tester: James Winder

Unit No: 57

Interval: 4185.00 ft (KB) To 4240.00 ft (KB) (TVD)

Reference Elevations: 3257.00 ft (KB)

Total Depth: 4240.00 ft (KB) (TVD)

3252.00 ft (CF)

Hole Diameter: 7.88 inches Hole Condition: Fair

KB to GR/CF: 5.00 ft

Serial #: 8791

Inside

Press@RunDepth: 1107.13 psig @ 4186.00 ft (KB)

Capacity: 8000.00 psig

Start Date: 2014.09.07

End Date:

2014.09.07

Last Calib.:

2014.09.07

Start Time:

09:21:05

End Time:

18:46:00

Time On Btm:

2014.09.07 @ 12:10:45

Time Off Btm:

2014.09.07 @ 15:09:45

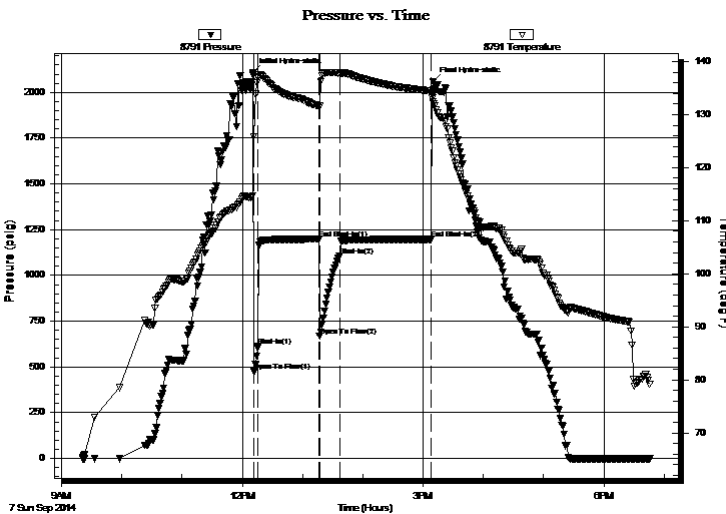
TEST COMMENT: 5 - IF: Blow built to BOB (11") in 45 seconds

60 - IS: Blow back built to 1 1/4"

20 - FF: Blow built to BOB in 45 seconds

90 - FS: No blow back

PRESSURE SUMMARY



Time (Min.)	Pressure (psig)	Temp (deg F)	Annotation
0	2109.20	114.69	Initial Hydro-static
1	474.80	125.82	Open To Flow (1)
5	613.95	137.06	Shut-In(1)
66	1197.56	131.63	End Shut-In(1)
66	666.72	131.59	Open To Flow (2)
86	1107.13	137.79	Shut-In(2)
178	1197.47	134.42	End Shut-In(2)
179	2056.68	132.41	Final Hydro-static

Recovery

Length (ft)	Description	Volume (bbl)
1895.00	Water w/slight trace oil 97%w, 3%m	24.89
470.00	MW w/trace oil 54%w, 46%m	6.59

Gas Rates

	Choke (inches)	Pressure (psig)	Gas Rate (Mcf/d)

* Recovery from multiple tests



**TRILOBITE
TESTING, INC**

DRILL STEM TEST REPORT

FLUID SUMMARY

Samuel Gary Jr. & Associates

35/3s/36w Rawlins KS

1515 Wynkoop STE 700
Denver, CO 80202

Fisher Cattle #2-35

Job Ticket: 60069

DST#: 3

ATTN: Chris Mitchell

Test Start: 2014.09.07 @ 09:21:00

Mud and Cushion Information

Mud Type: Gel Chem
Mud Weight: 9.00 lb/gal
Viscosity: 61.00 sec/qt
Water Loss: 9.35 in³
Resistivity: ohm.m
Salinity: 1000.00 ppm
Filter Cake: 1.00 inches

Cushion Type:
Cushion Length: ft
Cushion Volume: bbl
Gas Cushion Type:
Gas Cushion Pressure: psig

Oil API: deg API
Water Salinity: ppm

Recovery Information

Recovery Table

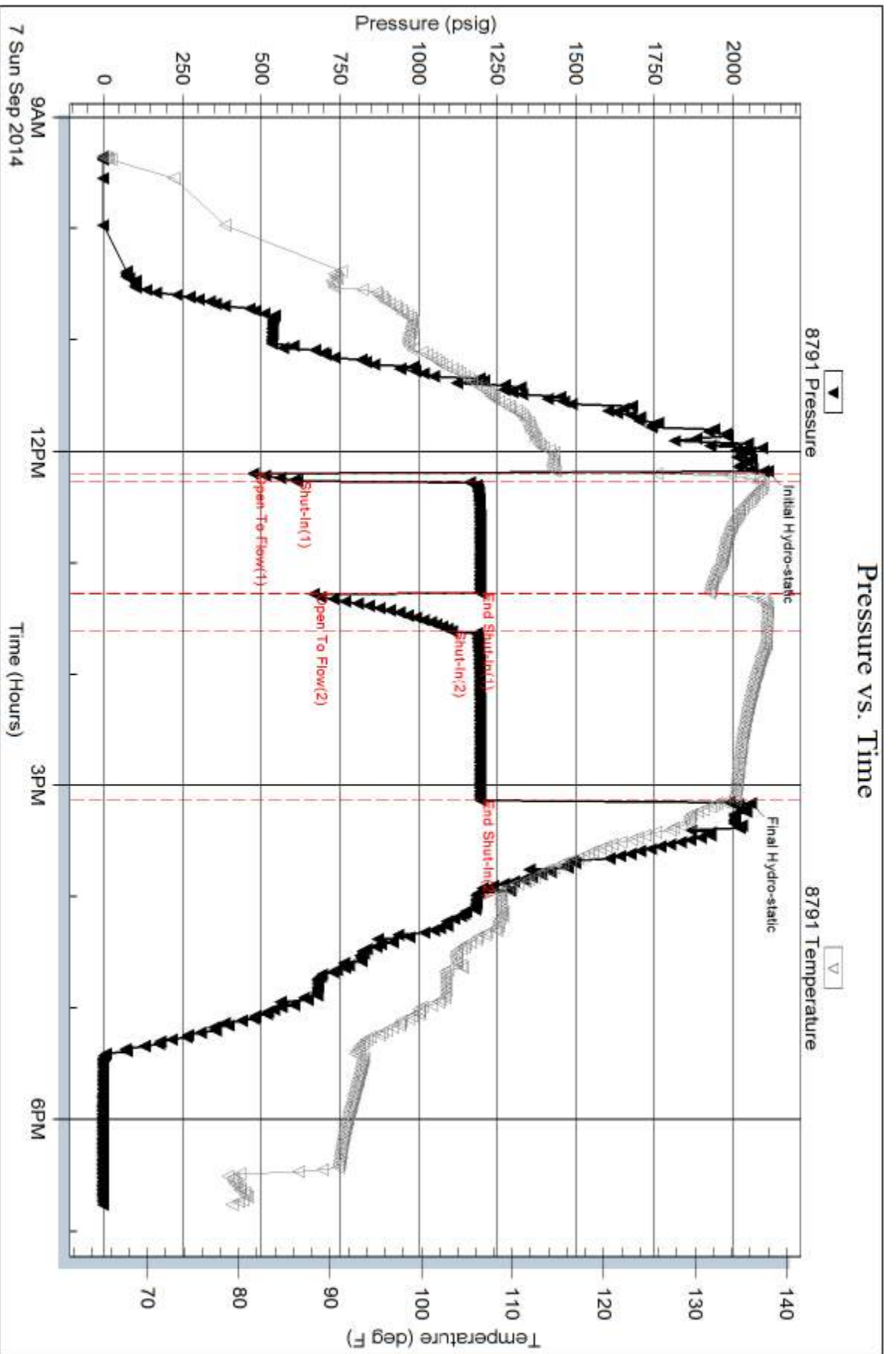
Length ft	Description	Volume bbl
1895.00	Water w /slight trace oil 97%w , 3%m	24.887
470.00	MW w /trace oil 54%w , 46%m	6.593

Total Length: 2365.00 ft Total Volume: 31.480 bbl

Num Fluid Samples: 0 Num Gas Bombs: 0 Serial #:

Laboratory Name: Laboratory Location:

Recovery Comments: RW = .152 ohms @ 78.4 deg F Chlorides = 45,000 ppm
Sampler = 110 PSI, 2500 mL Water 99%w , 1%m
Fluids had H2S smell but low enough no readings on any meters



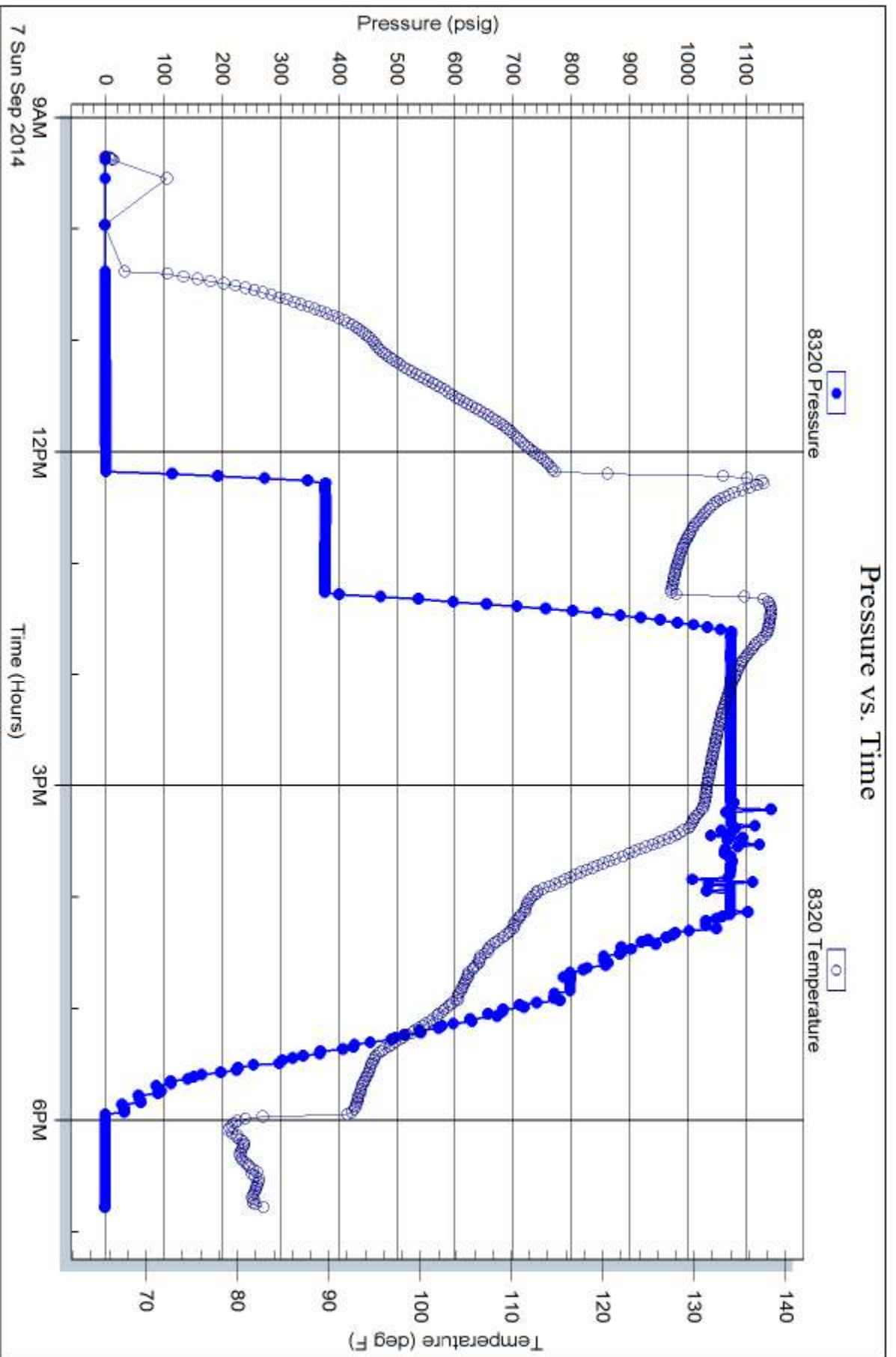
Serial #: 8320

Fluid

Samuel Gary Jr. & Associates

Fisher Cattle #2-35

DST Test Number: 3



Trilobite Testing, Inc

Ref. No: 60069

Printed: 2014.09.08 @ 08:55:59