



**TRILOBITE
TESTING, INC**

DRILL STEM TEST REPORT

Samuel Gary Jr. & Associates

35/3s/36w Rawlins KS

1515 Wynkoop STE 700
Denver, CO 80202

Fisher Cattle #2-35

Job Ticket: 60072

DST#: 6

ATTN: Chris Mitchell

Test Start: 2014.09.10 @ 17:45:00

GENERAL INFORMATION:

Formation: **Lower Pawnee**

Deviated: No Whipstock: ft (KB)

Time Tool Opened: 20:05:30

Time Test Ended: 02:14:45

Test Type: Conventional Bottom Hole (Reset)

Tester: James Winder

Unit No: 57

Interval: 4568.00 ft (KB) To 4598.00 ft (KB) (TVD)

Reference Elevations: 3257.00 ft (KB)

Total Depth: 4598.00 ft (KB) (TVD)

3252.00 ft (CF)

Hole Diameter: 7.88 inches Hole Condition: Fair

KB to GR/CF: 5.00 ft

Serial #: 8791 Inside

Press@RunDepth: 17.34 psig @ 4569.00 ft (KB)

Capacity: 8000.00 psig

Start Date: 2014.09.10

End Date:

2014.09.11

Last Calib.: 2014.09.11

Start Time: 17:45:05

End Time:

02:14:44

Time On Btm: 2014.09.10 @ 20:05:15

Time Off Btm: 2014.09.10 @ 23:48:45

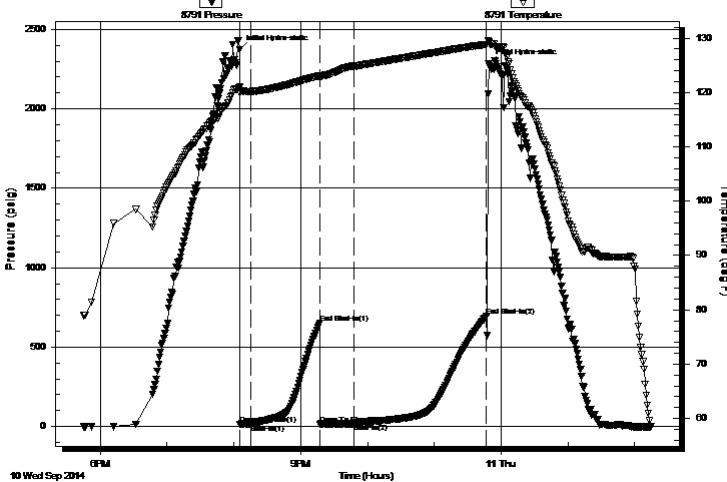
TEST COMMENT: 10 - IF: Blow built to 1/2"

60 - ISI: No blow back

30 - FF: No blow

120 - FSI: No blow back

Pressure vs. Time



PRESSURE SUMMARY

Time (Min.)	Pressure (psig)	Temp (deg F)	Annotation
0	2373.65	120.98	Initial Hydro-static
1	13.35	119.91	Open To Flow (1)
10	16.44	120.20	Shut-In(1)
72	651.10	123.12	End Shut-In(1)
72	15.18	122.78	Open To Flow (2)
103	17.34	124.84	Shut-In(2)
222	694.87	128.87	End Shut-In(2)
224	2284.90	129.31	Final Hydro-static

Recovery

Length (ft)	Description	Volume (bbl)
3.00	Mud 100%	0.01

Gas Rates

Choke (inches)	Pressure (psig)	Gas Rate (Mcf/d)

* Recovery from multiple tests



**TRILOBITE
TESTING, INC**

DRILL STEM TEST REPORT

FLUID SUMMARY

Samuel Gary Jr. & Associates

35/3s/36w Rawlins KS

1515 Wynkoop STE 700
Denver, CO 80202

Fisher Cattle #2-35

Job Ticket: 60072

DST#: 6

ATTN: Chris Mitchell

Test Start: 2014.09.10 @ 17:45:00

Mud and Cushion Information

Mud Type: Gel Chem

Cushion Type:

Oil API:

deg API

Mud Weight: 9.00 lb/gal

Cushion Length:

ft

Water Salinity:

ppm

Viscosity: 72.00 sec/qt

Cushion Volume:

bbbl

Water Loss: 7.99 in³

Gas Cushion Type:

Resistivity: ohm.m

Gas Cushion Pressure:

psig

Salinity: 750.00 ppm

Filter Cake: 1.00 inches

Recovery Information

Recovery Table

Length ft	Description	Volume bbl
3.00	Mud 100%	0.015

Total Length: 3.00 ft Total Volume: 0.015 bbl

Num Fluid Samples: 0

Num Gas Bombs: 0

Serial #:

Laboratory Name:

Laboratory Location:

Recovery Comments: Sampler = 100 PSI, 2500 mL Mud 100%

Serial #: 8791

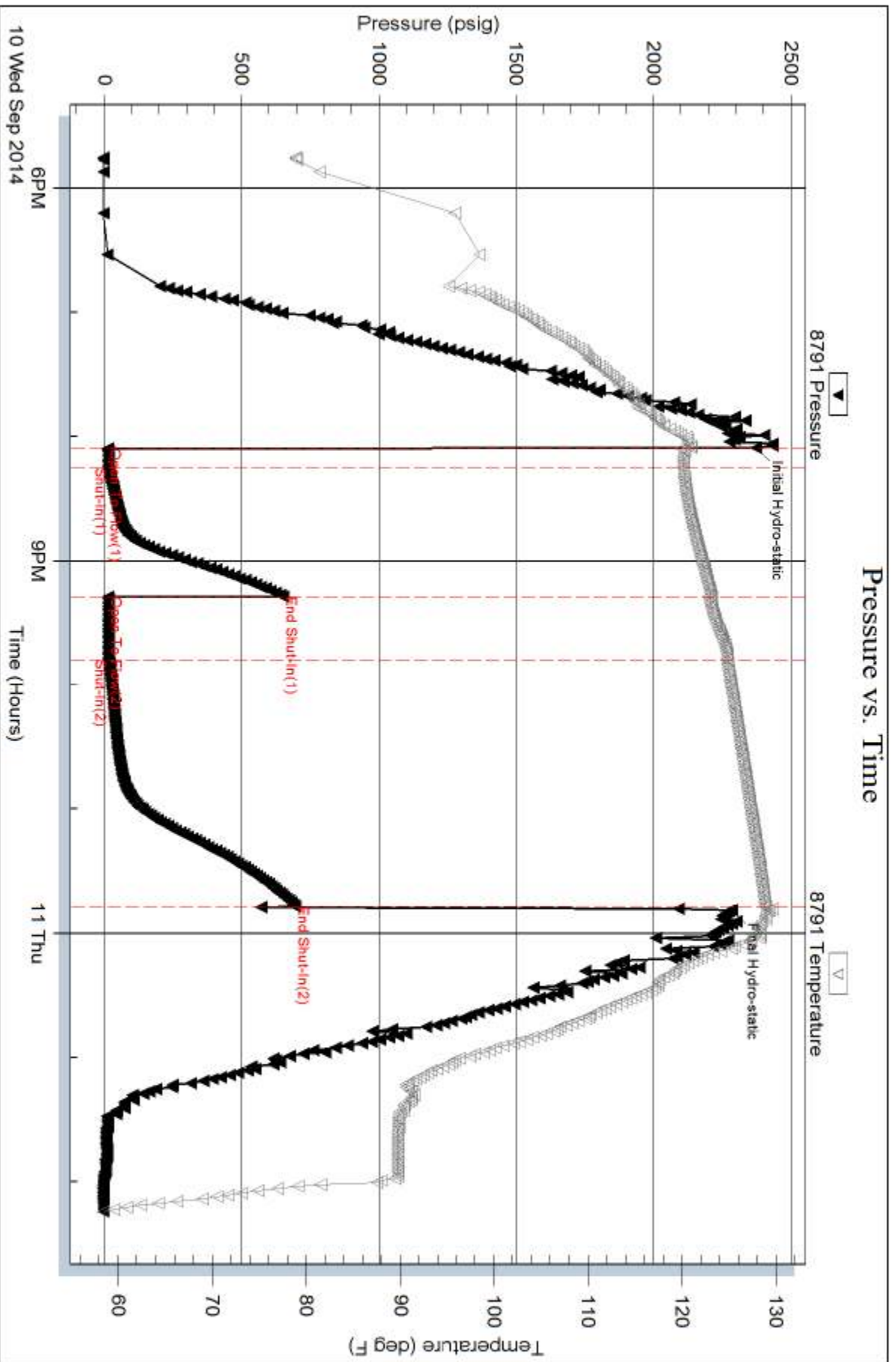
Inside

Samuel Gary Jr. & Associates

Fisher Cattle #2-35

DST Test Number: 6

Pressure vs. Time



Trilobite Testing, Inc

Ref. No: 60072

Printed: 2014.09.11 @ 06:52:49

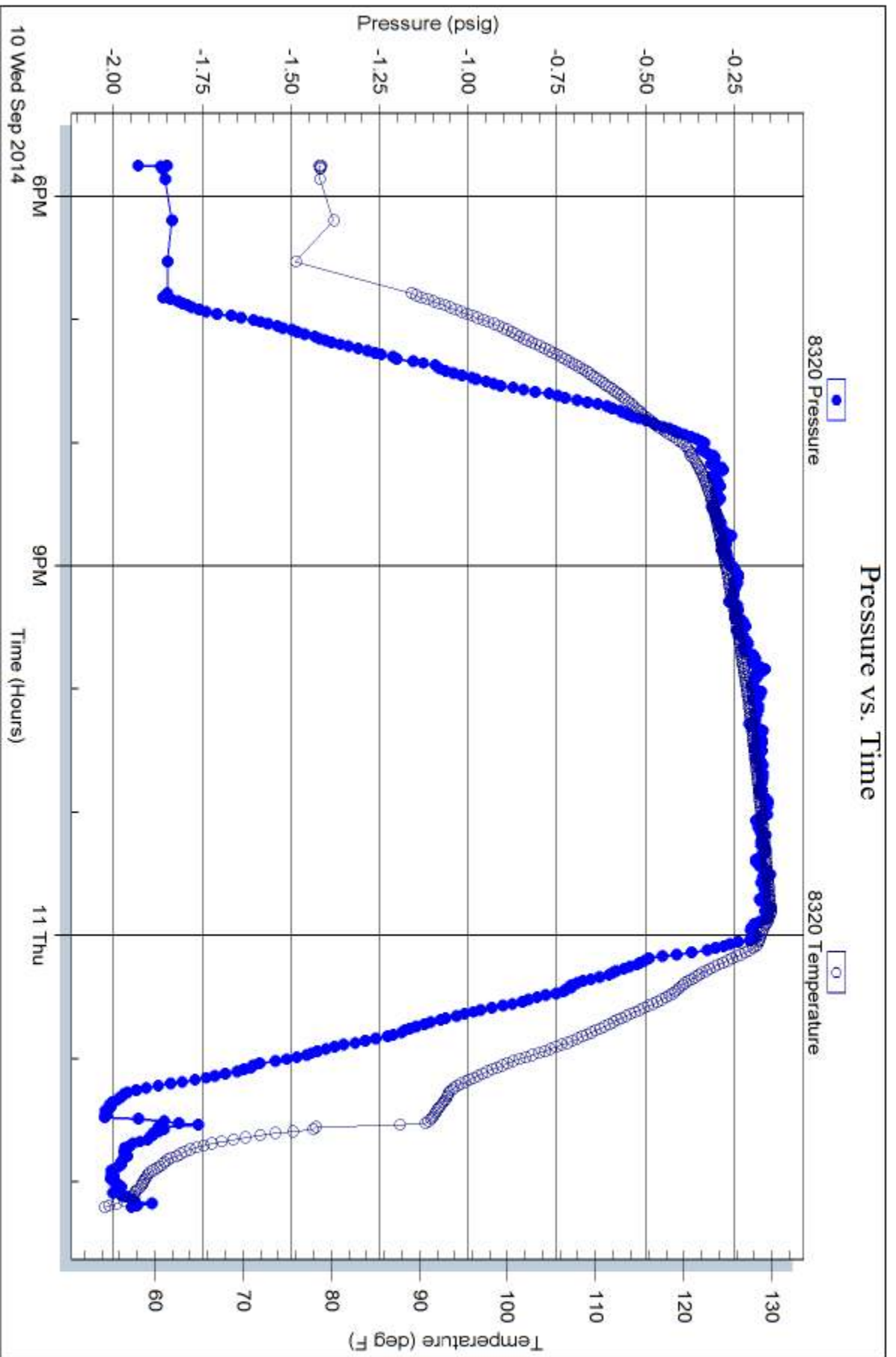
Serial #: 8320

Fluid

Samuel Gary Jr. & Associates

Fisher Cattle #2-35

DST Test Number: 6



Trilobite Testing, Inc

Ref. No: 60072

Printed: 2014.09.11 @ 06:52:49