



TRILOBITE TESTING, INC

DRILL STEM TEST REPORT

Berexco LLC
 2020 N. Bramblewood
 Wichita, KS 67206
 ATTN: Ed Grieves

3-29s-33w-Haskell, CO KS

Dennis Uhit #4-3

Job Ticket: 56565 **DST#: 1**
 Test Start: 2014.09.05 @ 02:22:00

GENERAL INFORMATION:

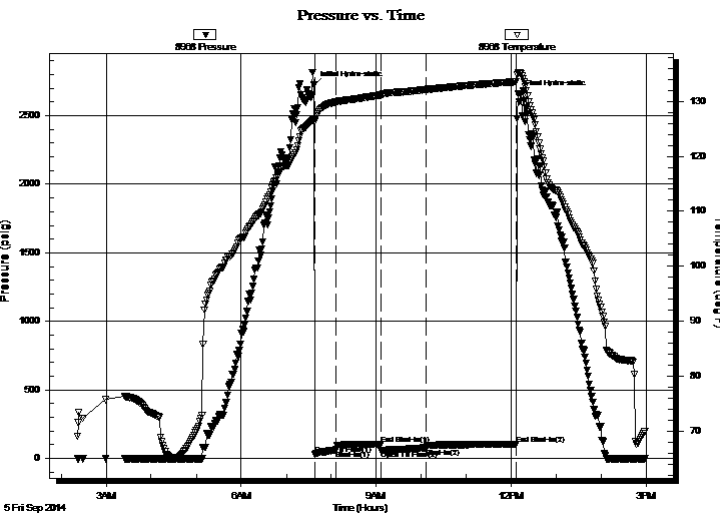
Formation: **Morrow**
 Deviated: No Whipstock: ft (KB)
 Time Tool Opened: 07:37:45
 Time Test Ended: 14:57:15
 Interval: **5388.00 ft (KB) To 5432.00 ft (KB) (TVD)**
 Total Depth: 5432.00 ft (KB) (TVD)
 Hole Diameter: 7.88 inches Hole Condition:
 Test Type: Conventional Bottom Hole (Initial)
 Tester: Cornelio Landa III
 Unit No: 67
 Reference Elevations: 2968.00 ft (KB)
 2955.00 ft (CF)
 KB to GR/CF: 13.00 ft

Serial #: 8968

Outside

Press@RunDepth: 77.83 psig @ 5391.00 ft (KB) Capacity: 8000.00 psig
 Start Date: 2014.09.05 End Date: 2014.09.05 Last Calib.: 2014.09.05
 Start Time: 02:22:05 End Time: 14:57:15 Time On Btm: 2014.09.05 @ 07:36:15
 Time Off Btm: 2014.09.05 @ 12:09:00

TEST COMMENT: IF: B.o.b. in 45 seconds-G.T.S. in 14 min.-Gauged gas-SEE GAS RATES
 IS: Bled off in 6 min.-No return
 FF: B.o.b. in 30 seconds & G.T.S.-Gauged gas-SEE GAS RATES
 FS: Bled off in 7 min.-Weak surface blow back-Died 1 1/2 hrs. into shut-in



PRESSURE SUMMARY

Time (Min.)	Pressure (psig)	Temp (deg F)	Annotation
0	2722.29	126.66	Initial Hydro-static
2	31.92	126.34	Open To Flow (1)
31	63.10	129.92	Shut-In(1)
90	103.16	131.15	End Shut-In(1)
91	57.04	131.12	Open To Flow (2)
151	77.83	132.17	Shut-In(2)
271	101.57	133.59	End Shut-In(2)
273	2657.70	135.28	Final Hydro-static

Recovery

Length (ft)	Description	Volume (bbl)
94.00	Gm 5g 95m	0.46
0.00	G.T.S.	0.00

Gas Rates

	Choke (inches)	Pressure (psig)	Gas Rate (Mcf/d)
First Gas Rate	0.25	6.00	32.36
Last Gas Rate	0.25	16.00	48.23
Max. Gas Rate	0.25	16.00	48.23



**TRILOBITE
TESTING, INC**

DRILL STEM TEST REPORT

FLUID SUMMARY

Berexco LLC

3-29s-33w-Haskell, CO KS

2020 N. Bramblewood
Wichita, KS 67206

Dennis Uhit #4-3

Job Ticket: 56565

DST#: 1

ATTN: Ed Grieves

Test Start: 2014.09.05 @ 02:22:00

Mud and Cushion Information

Mud Type: Gel Chem

Cushion Type:

Oil API:

deg API

Mud Weight: 9.00 lb/gal

Cushion Length:

ft

Water Salinity:

ppm

Viscosity: 54.00 sec/qt

Cushion Volume:

bbbl

Water Loss: 9.18 in³

Gas Cushion Type:

Resistivity: 0.00 ohm.m

Gas Cushion Pressure:

psig

Salinity: 1100.00 ppm

Filter Cake: 1.00 inches

Recovery Information

Recovery Table

Length ft	Description	Volume bbl
94.00	Gm 5g 95m	0.462
0.00	G.T.S.	0.000

Total Length: 94.00 ft Total Volume: 0.462 bbl

Num Fluid Samples: 0

Num Gas Bombs: 0

Serial #:

Laboratory Name:

Laboratory Location:

Recovery Comments:

