



**TRILOBITE
TESTING, INC**

DRILL STEM TEST REPORT

Woolsey Operating Co.
125 N. Market, Ste. 1000
Wichita KS.67202
ATTN: Bill Klaver

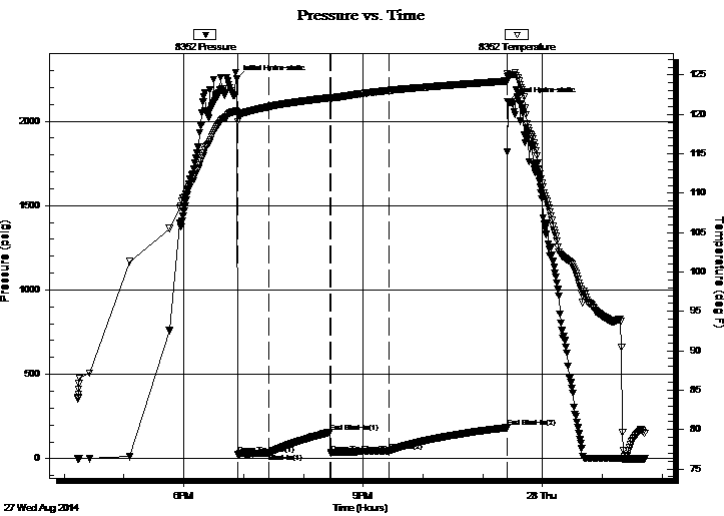
11-34s-11w Barber Ks.
Tucker B GU#6
Job Ticket: 54248 **DST#: 1**
Test Start: 2014.08.27 @ 16:13:29

GENERAL INFORMATION:

Formation: **Miss.**
Deviated: No Whipstock: ft (KB)
Time Tool Opened: 18:54:14
Time Test Ended: 01:42:59
Interval: **4515.00 ft (KB) To 4625.00 ft (KB) (TVD)**
Total Depth: 4625.00 ft (KB) (TVD)
Hole Diameter: 7.88 inches Hole Condition: Fair
Test Type: Conventional Bottom Hole (Initial)
Tester: Gary Pevoteaux
Unit No: 56
Reference Elevations: 1404.00 ft (KB)
1392.00 ft (CF)
KB to GR/CF: 12.00 ft

Serial #: 8352 Outside
Press@RunDepth: 44.46 psig @ 4516.00 ft (KB) Capacity: 8000.00 psig
Start Date: 2014.08.27 End Date: 2014.08.28 Last Calib.: 2014.08.28
Start Time: 16:13:34 End Time: 01:42:59 Time On Btm: 2014.08.27 @ 18:52:59
Time Off Btm: 2014.08.27 @ 23:24:59

TEST COMMENT: IF:Weak blow . Increase to 4".
IS:No blow .
FF:Weak blow . Slow increase to 4".
FS:No blow .



PRESSURE SUMMARY

Time (Min.)	Pressure (psig)	Temp (deg F)	Annotation
0	2250.28	120.37	Initial Hydro-static
2	24.22	119.07	Open To Flow (1)
33	33.05	120.98	Shut-In(1)
94	157.13	122.12	End Shut-In(1)
95	33.13	122.05	Open To Flow (2)
153	44.46	123.03	Shut-In(2)
271	183.56	124.23	End Shut-In(2)
272	2117.73	124.78	Final Hydro-static

Recovery

Length (ft)	Description	Volume (bbl)
40.00	GCM w o specs 7%g 93%m	0.20
0.00	165 ft.of GIP	0.00

Gas Rates

Choke (inches)	Pressure (psig)	Gas Rate (Mcf/d)



**TRILOBITE
TESTING, INC**

DRILL STEM TEST REPORT

FLUID SUMMARY

Woolsey Operating Co.

11-34s-11w Barber Ks.

125 N. Market, Ste. 1000
Wichita KS.67202

Tucker B GU#6

Job Ticket: 54248

DST#: 1

ATTN: Bill Klaver

Test Start: 2014.08.27 @ 16:13:29

Mud and Cushion Information

Mud Type: Gel Chem

Cushion Type:

Oil API:

deg API

Mud Weight: 9.00 lb/gal

Cushion Length:

ft

Water Salinity:

6000 ppm

Viscosity: 63.00 sec/qt

Cushion Volume:

bbbl

Water Loss: 9.19 in³

Gas Cushion Type:

Resistivity: 0.00 ohm.m

Gas Cushion Pressure:

psig

Salinity: 6000.00 ppm

Filter Cake: 0.20 inches

Recovery Information

Recovery Table

Length ft	Description	Volume bbbl
40.00	GCM w o specs 7%g 93%m	0.197
0.00	165 ft.of GIP	0.000

Total Length: 40.00 ft Total Volume: 0.197 bbl

Num Fluid Samples: 0

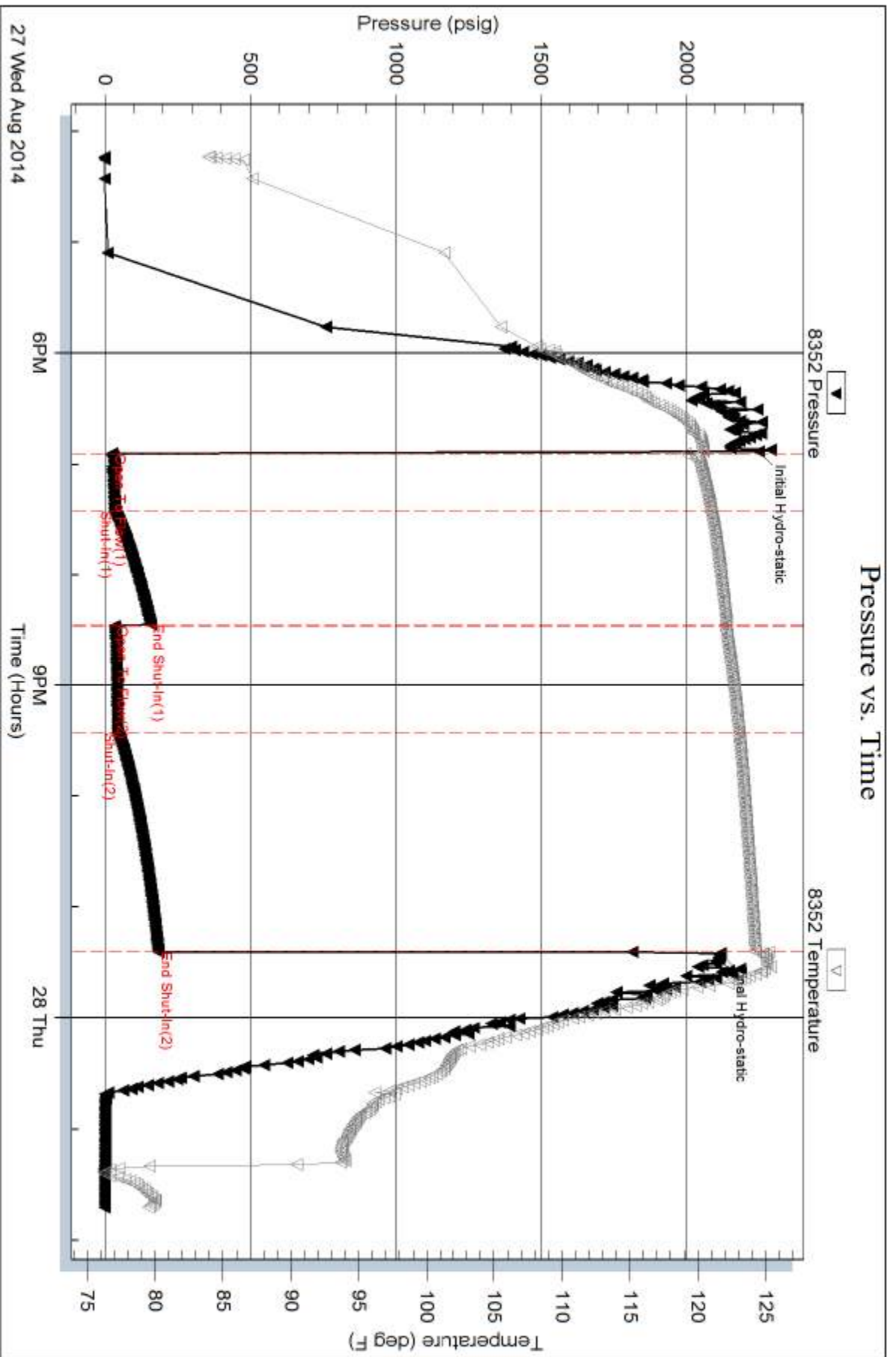
Num Gas Bombs: 0

Serial #: none

Laboratory Name:

Laboratory Location:

Recovery Comments:



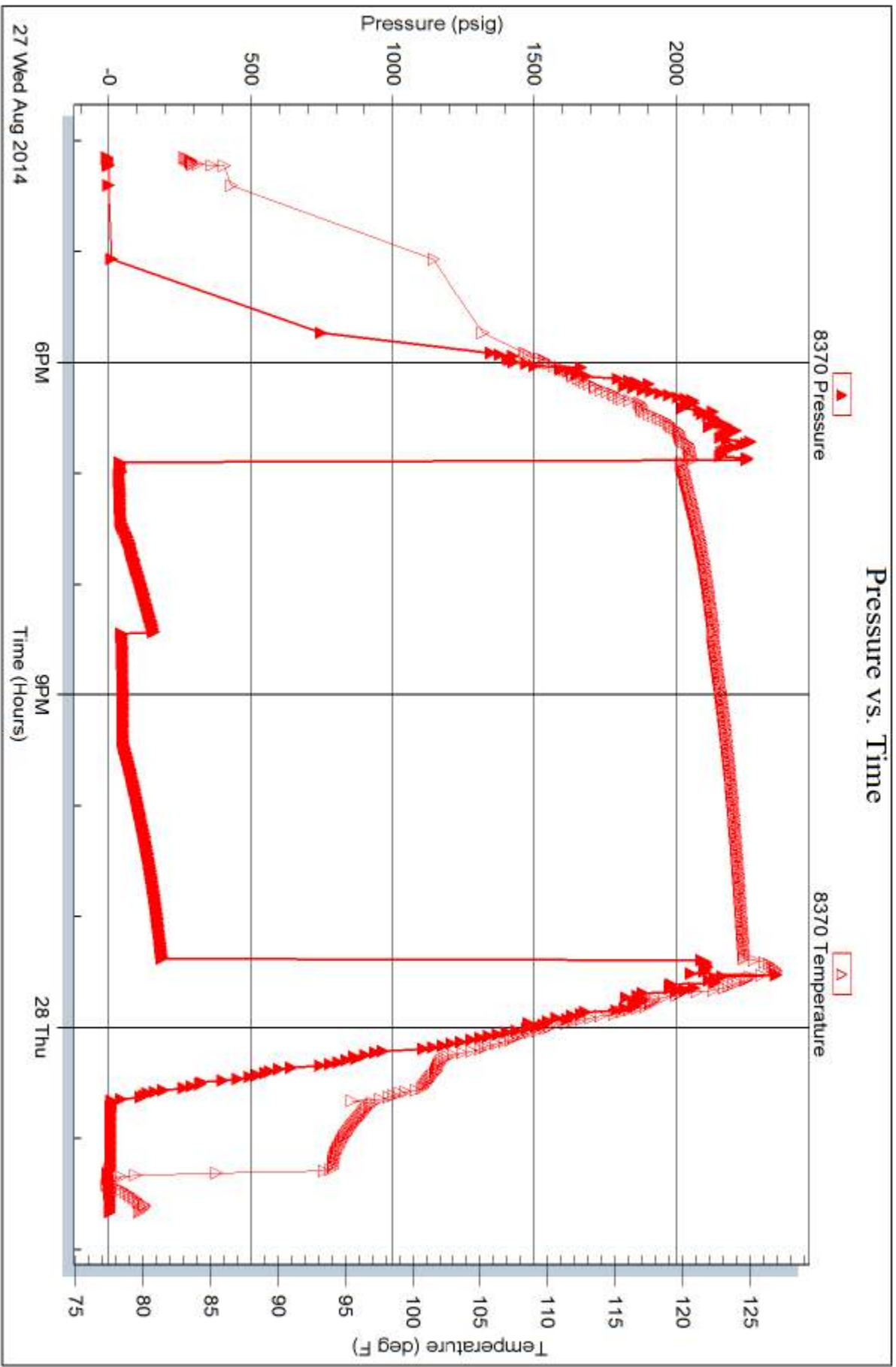
Serial #: 8370

Inside

Woodsey Operating Co.

Tucker B GU#6

DST Test Number: 1



Trilobite Testing, Inc

Ref. No: 54248

Printed: 2014.08.28 @ 08:27:51