



**TRILOBITE
TESTING, INC**

DRILL STEM TEST REPORT

Berexco LLC

10 1S 37W Cheyenne KS

2020 Bramblewood
Wichita KS 67206

Deyle 1-10

Job Ticket: 60165

DST#: 3

ATTN: Pete Vollmer

Test Start: 2014.09.23 @ 16:45:00

GENERAL INFORMATION:

Formation: **LKC "E"**

Deviated: No Whipstock: ft (KB)

Time Tool Opened: 19:19:00

Time Test Ended: 01:06:00

Test Type: Conventional Bottom Hole (Reset)

Tester: Robert Zodrow

Unit No: 49

Interval: 4234.00 ft (KB) To 4296.00 ft (KB) (TVD)

Reference Elevations: 3123.00 ft (KB)

Total Depth: 4296.00 ft (KB) (TVD)

3110.00 ft (CF)

Hole Diameter: 7.88 inches Hole Condition: Fair

KB to GR/CF: 13.00 ft

Serial #: 6769 Outside

Press@RunDepth: 30.70 psig @ 4235.00 ft (KB)

Capacity: 8000.00 psig

Start Date: 2014.09.23

End Date:

2014.09.24

Last Calib.:

2014.09.24

Start Time: 16:45:05

End Time:

01:05:59

Time On Btm:

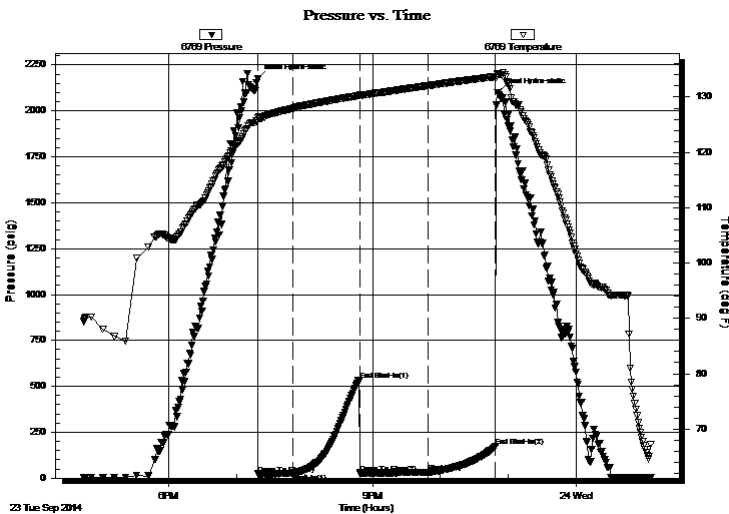
2014.09.23 @ 19:18:30

Time Off Btm:

2014.09.23 @ 22:50:30

TEST COMMENT: 30-IF- Blow built to 1/4" died in 26 mins
60-ISI- No return
60-FF- No blow
60-FSI- No return

PRESSURE SUMMARY



Time (Min.)	Pressure (psig)	Temp (deg F)	Annotation
0	2173.23	125.74	Initial Hydro-static
1	22.46	126.27	Open To Flow (1)
31	25.32	127.97	Shut-In(1)
90	535.35	130.26	End Shut-In(1)
91	27.72	130.38	Open To Flow (2)
151	30.70	132.05	Shut-In(2)
210	173.43	133.71	End Shut-In(2)
212	2097.66	134.21	Final Hydro-static

Recovery

Length (ft)	Description	Volume (bbl)
5.00	mud with oil spots 100%m	0.02

Gas Rates

	Choke (inches)	Pressure (psig)	Gas Rate (Mcf/d)

* Recovery from multiple tests



**TRILOBITE
TESTING, INC**

DRILL STEM TEST REPORT

FLUID SUMMARY

Berexco LLC

10 1S 37W Cheyenne KS

2020 Bramblewood
Wichita KS 67206

Deyle 1-10

Job Ticket: 60165

DST#: 3

ATTN: Pete Vollmer

Test Start: 2014.09.23 @ 16:45:00

Mud and Cushion Information

Mud Type: Gel Chem

Cushion Type:

Oil API:

deg API

Mud Weight: 9.00 lb/gal

Cushion Length:

ft

Water Salinity:

ppm

Viscosity: 90.00 sec/qt

Cushion Volume:

bbbl

Water Loss: 6.80 in³

Gas Cushion Type:

Resistivity: ohm.m

Gas Cushion Pressure:

psig

Salinity: 700.00 ppm

Filter Cake: 2.00 inches

Recovery Information

Recovery Table

Length ft	Description	Volume bbl
5.00	mud w ith oil spots 100%m	0.025

Total Length: 5.00 ft Total Volume: 0.025 bbl

Num Fluid Samples: 0

Num Gas Bombs: 0

Serial #:

Laboratory Name:

Laboratory Location:

Recovery Comments:

