



DRILL STEM TEST REPORT

Prepared For: **American Warrior Inc**

PO Box 399
Garden City KS 67846

ATTN: Jason T Alm

GS #1-33

33 18s 21w Ness,KS

Start Date: 2014.09.06 @ 00:21:00

End Date: 2014.09.06 @ 07:41:00

Job Ticket #: 56137 DST #: 1

Trilobite Testing, Inc
1515 Commerce Parkway Hays, KS 67601
ph: 785-625-4778 fax: 785-625-5620

Printed: 2014.09.08 @ 16:45:50



**TRILOBITE
TESTING, INC**

DRILL STEM TEST REPORT

American Warrior Inc
PO Box 399
Garden City KS 67846
ATTN: Jason T Alm

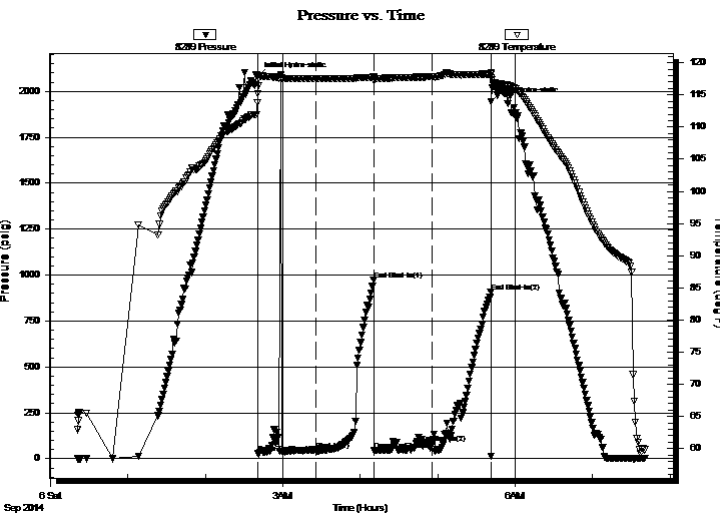
33 18s 21w Ness,KS
GS #1-33
Job Ticket: 56137 **DST#: 1**
Test Start: 2014.09.06 @ 00:21:00

GENERAL INFORMATION:

Formation: **Mississippian**
Deviated: No Whipstock: ft (KB)
Time Tool Opened: 02:40:45
Time Test Ended: 07:41:00
Interval: **4206.00 ft (KB) To 4212.00 ft (KB) (TVD)**
Total Depth: 4212.00 ft (KB) (TVD)
Hole Diameter: 7.88 inches Hole Condition: Fair
Test Type: Conventional Bottom Hole (Initial)
Tester: Jim Svaty
Unit No: 76
Reference Elevations: 2120.00 ft (KB)
2112.00 ft (CF)
KB to GR/CF: 8.00 ft

Serial #: 8289 Outside
Press@RunDepth: 81.68 psig @ 4207.00 ft (KB) Capacity: 8000.00 psig
Start Date: 2014.09.06 End Date: 2014.09.06 Last Calib.: 2014.09.06
Start Time: 00:21:02 End Time: 07:41:00 Time On Btm: 2014.09.06 @ 02:40:15
Time Off Btm: 2014.09.06 @ 05:41:30

TEST COMMENT: 45-IFP- 3/4". Blow in 2 min. Died Back in 11 min. Flushed in 17 min. No Blow
45-ISIP- No Blow
45-FFP- No Blow
45-FSIP- No Blow



PRESSURE SUMMARY

Time (Min.)	Pressure (psig)	Temp (deg F)	Annotation
0	2079.68	113.80	Initial Hydro-static
1	29.00	115.21	Open To Flow (1)
46	47.54	117.51	Shut-In(1)
90	974.80	117.76	End Shut-In(1)
91	44.62	117.18	Open To Flow (2)
136	81.68	117.84	Shut-In(2)
181	906.51	118.26	End Shut-In(2)
182	1945.65	118.50	Final Hydro-static

Recovery

Length (ft)	Description	Volume (bbl)
5.00	OSM 100%	0.02

Gas Rates

	Choke (inches)	Pressure (psig)	Gas Rate (Mcf/d)



TRILOBITE TESTING, INC

DRILL STEM TEST REPORT

American Warrior Inc
 PO Box 399
 Garden City KS 67846
 ATTN: Jason T Alm

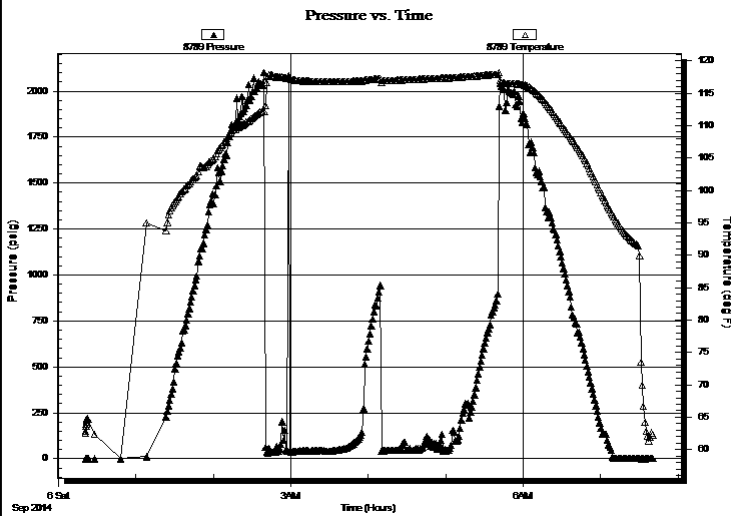
33 18s 21w Ness, KS
GS #1-33
 Job Ticket: 56137 **DST#: 1**
 Test Start: 2014.09.06 @ 00:21:00

GENERAL INFORMATION:

Formation: **Mississippian**
 Deviated: No Whipstock: ft (KB)
 Time Tool Opened: 02:40:45
 Time Test Ended: 07:41:00
 Interval: **4206.00 ft (KB) To 4212.00 ft (KB) (TVD)**
 Total Depth: 4212.00 ft (KB) (TVD)
 Hole Diameter: 7.88 inches Hole Condition: Fair
 Test Type: Conventional Bottom Hole (Initial)
 Tester: Jim Svaty
 Unit No: 76
 Reference Elevations: 2120.00 ft (KB)
 2112.00 ft (CF)
 KB to GR/CF: 8.00 ft

Serial #: 8789 Inside
 Press@RunDepth: psig @ 4207.00 ft (KB) Capacity: 8000.00 psig
 Start Date: 2014.09.06 End Date: 2014.09.06 Last Calib.: 2014.09.06
 Start Time: 00:21:02 End Time: 07:40:45 Time On Btm:
 Time Off Btm:

TEST COMMENT: 45-IFP- 3/4". Blow in 2 min. Died Back in 11 min. Flushed in 17 min. No Blow
 45-ISIP- No Blow
 45-FFP- No Blow
 45-FSIP- No Blow



PRESSURE SUMMARY

Time (Min.)	Pressure (psig)	Temp (deg F)	Annotation

Recovery

Length (ft)	Description	Volume (bbl)
5.00	OSM 100%	0.02

Gas Rates

	Choke (inches)	Pressure (psig)	Gas Rate (Mcf/d)



**TRILOBITE
TESTING, INC**

DRILL STEM TEST REPORT

TOOL DIAGRAM

American Warrior Inc
PO Box 399
Garden City KS 67846
ATTN: Jason T Alm

33 18s 21w Ness,KS
GS #1-33
Job Ticket: 56137 **DST#: 1**
Test Start: 2014.09.06 @ 00:21:00

Tool Information

Drill Pipe:	Length: 4153.00 ft	Diameter: 3.80 inches	Volume: 58.26 bbl	Tool Weight:	2500.00 lb
Heavy Wt. Pipe:	Length: 0.00 ft	Diameter: 2.75 inches	Volume: 0.00 bbl	Weight set on Packer:	25000.00 lb
Drill Collar:	Length: 31.00 ft	Diameter: 2.25 inches	Volume: 0.15 bbl	Weight to Pull Loose:	75000.00 lb
			<u>Total Volume: 58.41 bbl</u>	Tool Chased	0.00 ft
Drill Pipe Above KB:	6.00 ft			String Weight: Initial	60000.00 lb
Depth to Top Packer:	4206.00 ft			Final	60000.00 lb
Depth to Bottom Packer:	ft				
Interval between Packers:	6.00 ft				
Tool Length:	34.00 ft				
Number of Packers:	2	Diameter: 6.75 inches			

Tool Comments:

Tool Description

Length (ft) Serial No. Position Depth (ft) Accum. Lengths

Tool Description	Length (ft)	Serial No.	Position	Depth (ft)	Accum. Lengths
Change Over Sub	1.00			4179.00	
Shut In Tool	5.00			4184.00	
Hydraulic tool	5.00			4189.00	
Jars	5.00			4194.00	
Safety Joint	2.00			4196.00	
Packer	5.00			4201.00	28.00 Bottom Of Top Packer
Packer	5.00			4206.00	
Stubb	1.00			4207.00	
Recorder	0.00	8789	Inside	4207.00	
Recorder	0.00	8289	Outside	4207.00	
Perforations	2.00			4209.00	
Bullnose	3.00			4212.00	6.00 Bottom Packers & Anchor

Total Tool Length: 34.00



**TRILOBITE
TESTING, INC**

DRILL STEM TEST REPORT

FLUID SUMMARY

American Warrior Inc
PO Box 399
Garden City KS 67846
ATTN: Jason T Alm

33 18s 21w Ness,KS
GS #1-33
Job Ticket: 56137 **DST#: 1**
Test Start: 2014.09.06 @ 00:21:00

Mud and Cushion Information

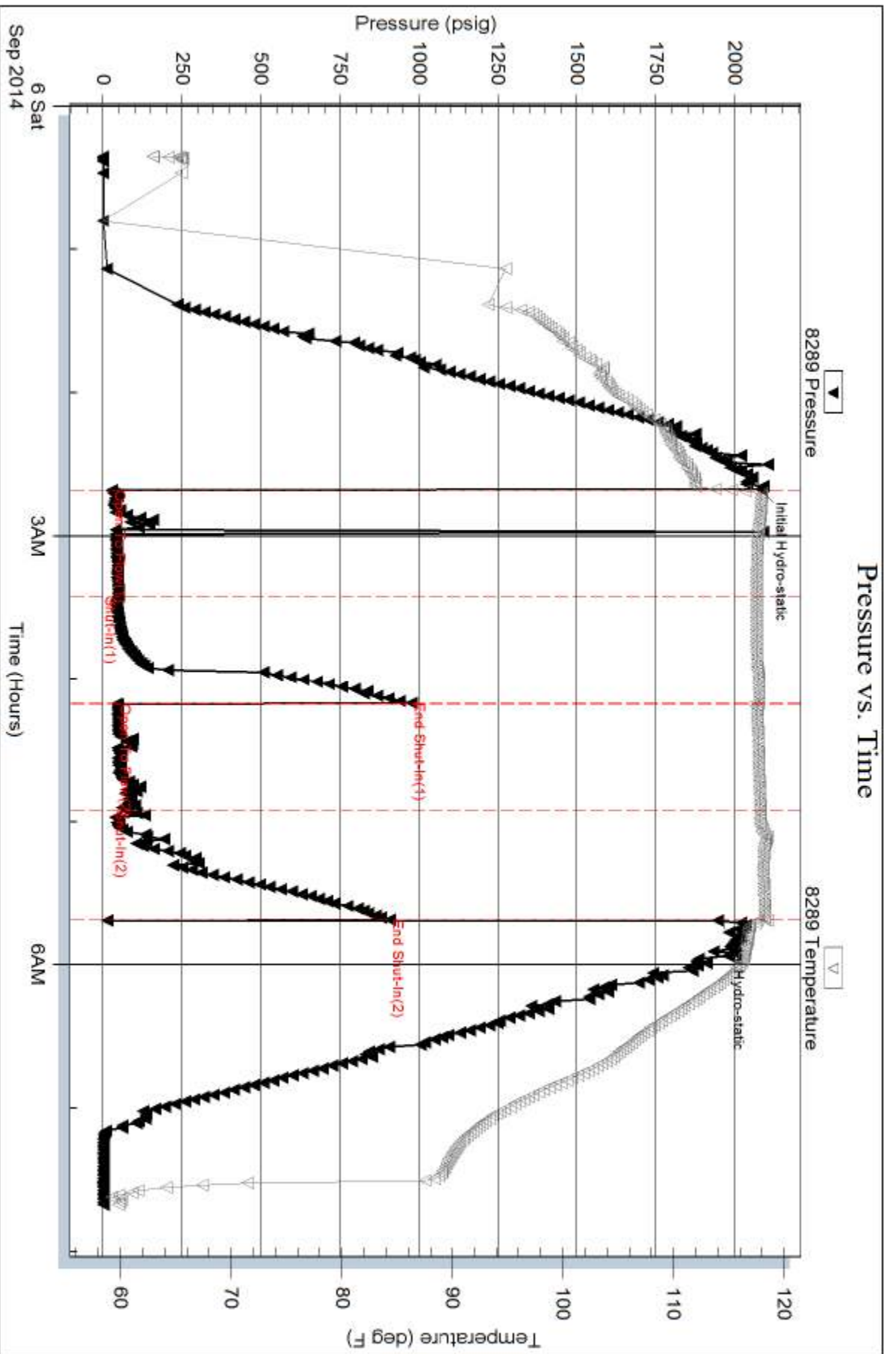
Mud Type: Gel Chem	Cushion Type:	Oil API:	deg API
Mud Weight: 9.00 lb/gal	Cushion Length: ft	Water Salinity:	ppm
Viscosity: 52.00 sec/qt	Cushion Volume: bbl		
Water Loss: 6.79 in ³	Gas Cushion Type:		
Resistivity: ohm.m	Gas Cushion Pressure: psig		
Salinity: 4300.00 ppm			
Filter Cake: 1.00 inches			

Recovery Information

Recovery Table

Length ft	Description	Volume bbl
5.00	OSM 100%	0.025

Total Length: 5.00 ft Total Volume: 0.025 bbl
Num Fluid Samples: 0 Num Gas Bombs: 0 Serial #:
Laboratory Name: Laboratory Location:
Recovery Comments:



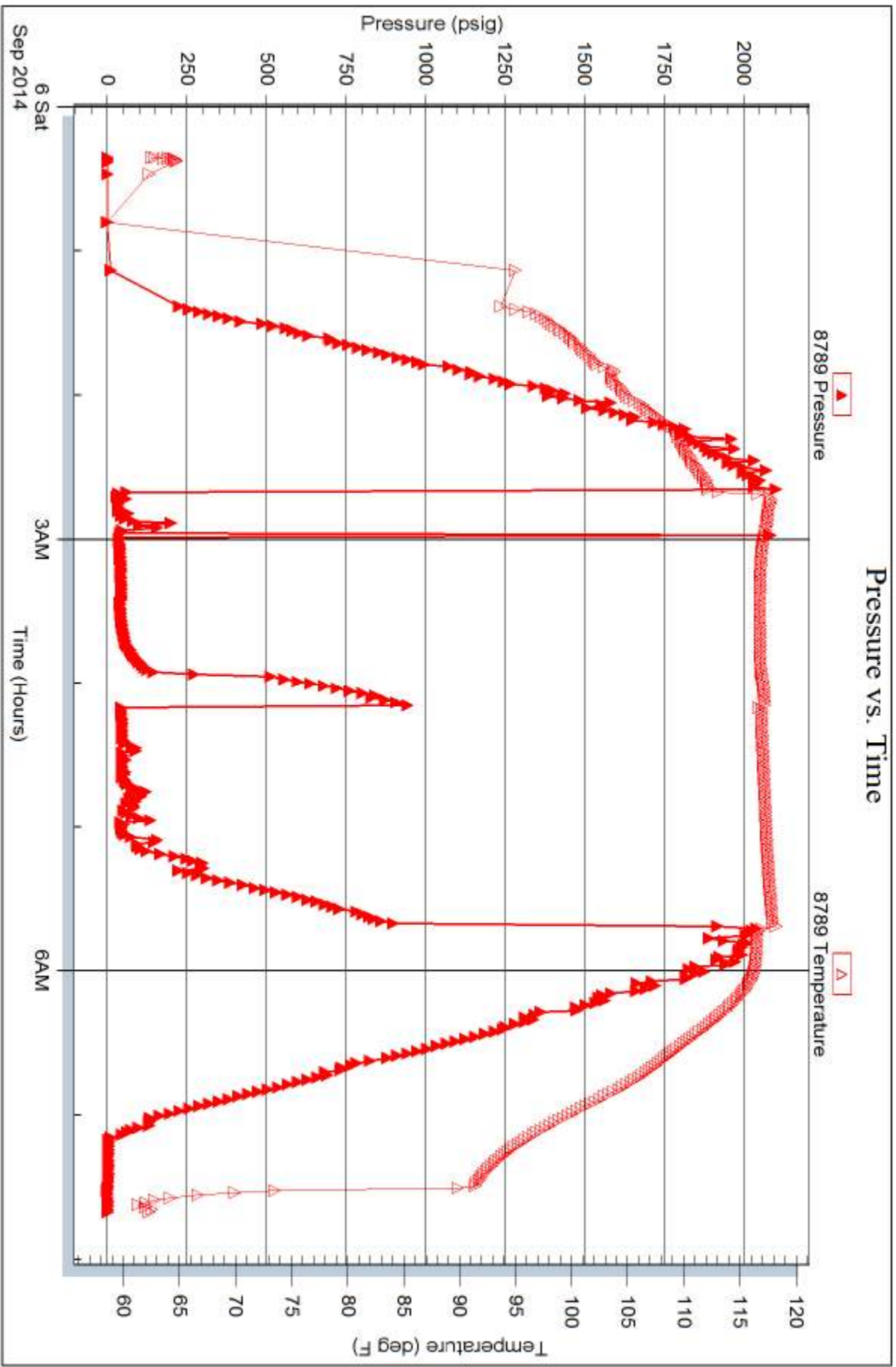
Serial #: 8789

Inside

American Warrior Inc

GS #1-33

DST Test Number: 1



Trilobite Testing, Inc

Ref. No: 56137

Printed: 2014.09.08 @ 16:45:51



TRILOBITE TESTING INC.

1515 Commerce Parkway • Hays, Kansas 67601

Test Ticket

NO. 56137

Well Name & No. AS 1-33 Test No. 1 Date 9-5-14
 Company American Warrior Inc. Elevation 2120 KB 2112 GL
 Address 3118 Cummings Rd Box 399 Garden City KS 67846
 Co. Rep / Geo. JASON T. Alm Rig Discovery #3
 Location: Sec. 33 Twp. 18^s Rge. 21^w Co. Ness State KS

Interval Tested 4206-4212 Zone Tested Miss
 Anchor Length 6 Drill Pipe Run 4153 Mud Wt. 9.3
 Top Packer Depth 4201 Drill Collars Run 31 Vis 52
 Bottom Packer Depth 4206 Wt. Pipe Run 0 WL 6.8
 Total Depth 4212 Chlorides 4300 ppm System LCM 1

Blow Description IFP- 3/4 in Blowir 2min Died Back 11min Flushed 17min. No Blow
ISIP- No Blow
FFP- No Blow
FSIP- No Blow

Rec	Feet of	%gas	%oil	%water	%mud
<u>5</u>	<u>05m</u>			<u>100</u>	
Rec	Feet of	%gas	%oil	%water	%mud
Rec	Feet of	%gas	%oil	%water	%mud
Rec	Feet of	%gas	%oil	%water	%mud
Rec	Feet of	%gas	%oil	%water	%mud

Rec Total 5 BHT 118 Gravity _____ API RW _____ @ _____ °F Chlorides _____ ppm

(A) Initial Hydrostatic 2079 Test 1250 T-On Location 21:01
 (B) First Initial Flow 29 Jars 250 T-Started 00:21
 (C) First Final Flow 47 Safety Joint 75 T-Open 02:41
 (D) Initial Shut-In 974 Circ Sub _____ T-Pulled 05:41
 (E) Second Initial Flow 44 Hourly Standby _____ T-Out 07:41
 (F) Second Final Flow 81 Mileage 116 RT 179.80 Comments _____
 (G) Final Shut-In 906 Sampler _____
 (H) Final Hydrostatic 1945 Straddle _____ Ruined Shale Packer _____

Initial Open 45 Shale Packer _____ Ruined Packer _____
 Initial Shut-In 45 Extra Packer _____ Extra Copies _____
 Final Flow 45 Extra Recorder _____ Sub Total 0
 Final Shut-In 45 Day Standby _____ Total 1754.80
 Accessibility _____ MP/DST Disc't _____
 Sub Total 1754.80

Approved By _____ Our Representative [Signature]

Trilobite Testing Inc. shall not be liable for damaged of any kind of the property or personnel of the one for whom a test is made, or for any loss suffered or sustained, directly or indirectly, through the use of its equipment, or its statements or opinion concerning the results of any test, tools lost or damaged in the hole shall be paid for at cost by the party for whom the test is made.