



**TRILOBITE TESTING, INC**

# DRILL STEM TEST REPORT

Stelbar Oil Corp  
 1625 N Waterfront Pkwy  
 Wichita, KS 67206  
 ATTN: Dave Goldak

**12-17s-33w Scott Ks**  
**Ellis 1-12**  
 Job Ticket: 59048 **DST#: 1**  
 Test Start: 2014.10.22 @ 07:04:15

## GENERAL INFORMATION:

Formation: **LKC B**  
 Deviated: No Whipstock: ft (KB)  
 Test Type: Conventional Bottom Hole (Initial)  
 Time Tool Opened: 08:35:05 Tester: Brandon Turley  
 Time Test Ended: 14:16:35 Unit No: 60  
 Interval: **3980.00 ft (KB) To 4005.00 ft (KB) (TVD)** Reference Elevations: 2977.00 ft (KB)  
 Total Depth: 4005.00 ft (KB) (TVD) 2972.00 ft (CF)  
 Hole Diameter: 7.88 inches Hole Condition: Good KB to GR/CF: 5.00 ft

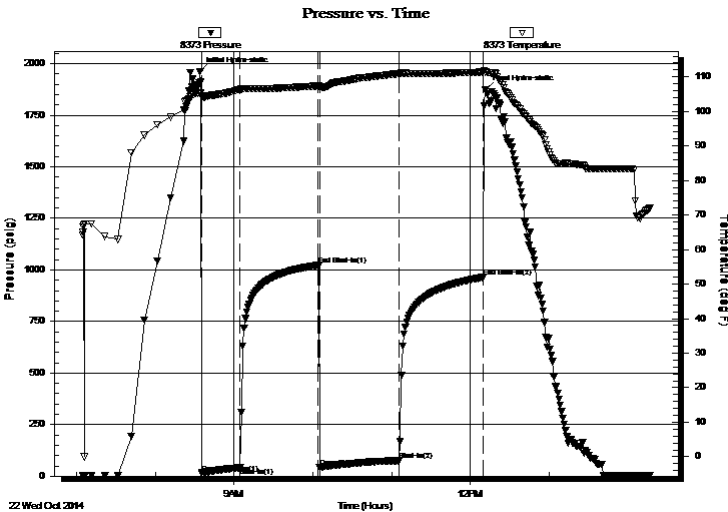
## Serial #: 8373

Inside

Press@RunDepth: 75.06 psig @ 3981.00 ft (KB) Capacity: 8000.00 psig  
 Start Date: 2014.10.22 End Date: 2014.10.22 Last Calib.: 2014.10.22  
 Start Time: 07:04:40 End Time: 14:16:35 Time On Btm: 2014.10.22 @ 08:34:05  
 Time Off Btm: 2014.10.22 @ 12:11:35

TEST COMMENT: IF: 1/4 blow built to 2 1/2 in 30 min.  
 IS: No return.  
 FF: Surface blow built to 1 in 60 min.  
 FS: No return.

## PRESSURE SUMMARY



| Time (Min.) | Pressure (psig) | Temp (deg F) | Annotation           |
|-------------|-----------------|--------------|----------------------|
| 0           | 1963.18         | 105.27       | Initial Hydro-static |
| 1           | 15.10           | 104.40       | Open To Flow (1)     |
| 31          | 41.75           | 106.20       | Shut-In(1)           |
| 90          | 1022.46         | 107.35       | End Shut-In(1)       |
| 91          | 43.48           | 106.99       | Open To Flow (2)     |
| 152         | 75.06           | 110.92       | Shut-In(2)           |
| 216         | 964.00          | 111.39       | End Shut-In(2)       |
| 218         | 1875.07         | 111.33       | Final Hydro-static   |

## Recovery

| Length (ft) | Description    | Volume (bbl) |
|-------------|----------------|--------------|
| 60.00       | mcw 70%w 30%m  | 0.30         |
| 70.00       | w cm 10%w 90%m | 0.43         |
| 1.00        | free oil 100%o | 0.01         |
|             |                |              |
|             |                |              |

## Gas Rates

|  | Choke (inches) | Pressure (psig) | Gas Rate (Mcf/d) |
|--|----------------|-----------------|------------------|
|  |                |                 |                  |



**TRILOBITE  
TESTING, INC**

# DRILL STEM TEST REPORT

## FLUID SUMMARY

Stelbar Oil Corp

**12-17s-33w Scott Ks**

1625 N Waterfront Pkwy  
Wichita, KS 67206

**Ellis 1-12**

Job Ticket: 59048

**DST#: 1**

ATTN: Dave Goldak

Test Start: 2014.10.22 @ 07:04:15

### Mud and Cushion Information

Mud Type: Gel Chem

Cushion Type:

Oil API:

0 deg API

Mud Weight: 9.00 lb/gal

Cushion Length:

ft

Water Salinity:

27000 ppm

Viscosity: 54.00 sec/qt

Cushion Volume:

bbbl

Water Loss: 7.99 in<sup>3</sup>

Gas Cushion Type:

Resistivity: 0.00 ohm.m

Gas Cushion Pressure:

psig

Salinity: 4000.00 ppm

Filter Cake: 1.00 inches

### Recovery Information

Recovery Table

| Length<br>ft | Description    | Volume<br>bbbl |
|--------------|----------------|----------------|
| 60.00        | mcw 70%w 30%m  | 0.295          |
| 70.00        | w cm 10%w 90%m | 0.426          |
| 1.00         | free oil 100%o | 0.014          |

Total Length: 131.00 ft      Total Volume: 0.735 bbl

Num Fluid Samples: 0

Num Gas Bombs: 0

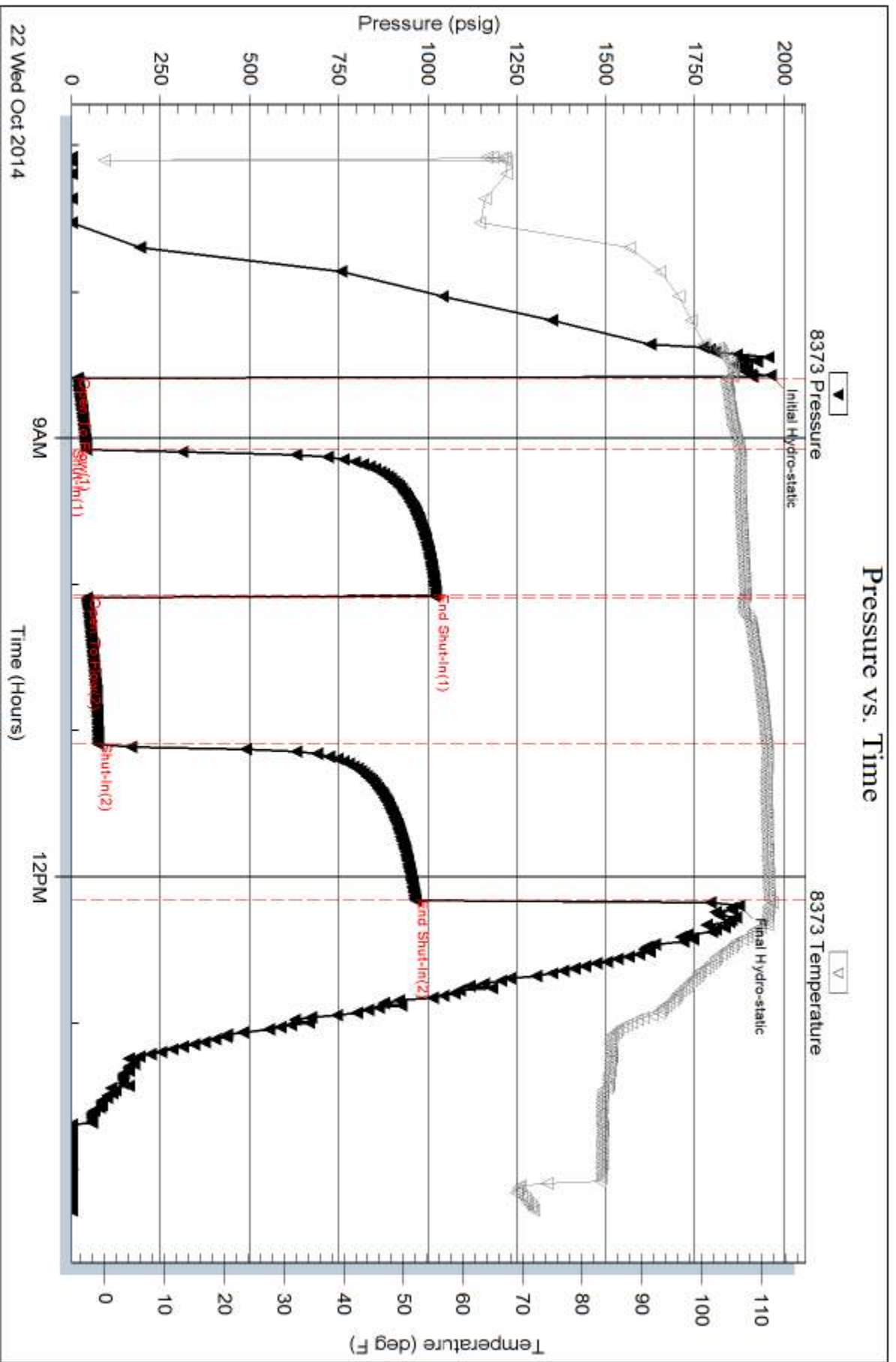
Serial #:

Laboratory Name:

Laboratory Location:

Recovery Comments: .24@75=27000

### Pressure vs. Time



22 Wed Oct 2014