



TRILOBITE TESTING, INC.

DRILL STEM TEST REPORT

Chaco Energy Company

21-13s-32w Logan county

P.O. Box. 1587
Denver Co, 80201

Scheetz 5-21

Job Ticket: 57487

DST#: 1

ATTN: Austin G.

Test Start: 2014.10.25 @ 05:00:00

GENERAL INFORMATION:

Formation: **Lansing**

Deviated: No Whipstock: 0.00 ft (KB)

Time Tool Opened: 07:49:00

Time Test Ended: 13:03:30

Test Type: Conventional Bottom Hole (Initial)

Tester: Justin Harris

Unit No: 58

Interval: 4000.00 ft (KB) To 4047.00 ft (KB) (TVD)

Reference Elevations: 3023.00 ft (KB)

Total Depth: 4047.00 ft (KB) (TVD)

3011.00 ft (CF)

Hole Diameter: 7.88 inches Hole Condition: Poor

KB to GR/CF: 12.00 ft

Serial #: 6625 Outside

Press @ Run Depth: 131.99 psig @ 4034.00 ft (KB)

Capacity: 8000.00 psig

Start Date: 2014.10.25

End Date: 2014.10.25

Last Calib.: 2014.10.25

Start Time: 05:00:01

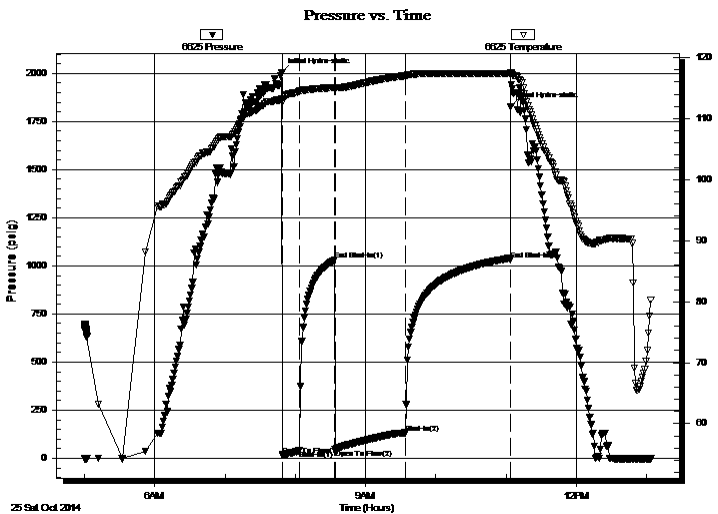
End Time: 13:03:30

Time On Btm: 2014.10.25 @ 07:48:30

Time Off Btm: 2014.10.25 @ 11:04:00

TEST COMMENT: 15: Weak surface blow build to 1 3/4".
30: No Return.
60: Weak surface blow.
90: No Return.

PRESSURE SUMMARY



Time (Min.)	Pressure (psig)	Temp (deg F)	Annotation
0	2005.19	113.27	Initial Hydro-static
1	16.84	112.66	Open To Flow (1)
15	40.37	114.50	Shut-In(1)
45	1030.05	115.09	End Shut-In(1)
46	45.94	114.98	Open To Flow (2)
106	131.99	117.02	Shut-In(2)
195	1033.33	117.38	End Shut-In(2)
196	1828.77	117.58	Final Hydro-static

Recovery

Length (ft)	Description	Volume (bbl)
250.00	mcw 15% m 85% w with oil spots	1.23
15.00	mcw 10% m 90% w with oil spots	0.21

Gas Rates

Choke (inches)	Pressure (psig)	Gas Rate (Mcf/d)



**TRILOBITE
TESTING, INC.**

DRILL STEM TEST REPORT

FLUID SUMMARY

Chaco Energy Company

21-13s-32w Logan county

P.O. Box. 1587
Denver Co, 80201

Scheetz 5-21

Job Ticket: 57487

DST#: 1

ATTN: Austin G.

Test Start: 2014.10.25 @ 05:00:00

Mud and Cushion Information

Mud Type: Gel Chem

Cushion Type:

Oil API:

0 deg API

Mud Weight: 9.00 lb/gal

Cushion Length:

ft

Water Salinity:

40000 ppm

Viscosity: 52.00 sec/qt

Cushion Volume:

bbbl

Water Loss: 8.78 in³

Gas Cushion Type:

Resistivity: ohm.m

Gas Cushion Pressure:

psig

Salinity: 4000.00 ppm

Filter Cake: 1.00 inches

Recovery Information

Recovery Table

Length ft	Description	Volume bbl
250.00	mcw 15%m 85%w with oil spots	1.229
15.00	mcw 10%m 90%w with oil spots	0.210

Total Length: 265.00 ft Total Volume: 1.439 bbl

Num Fluid Samples: 0

Num Gas Bombs: 0

Serial #:

Laboratory Name:

Laboratory Location:

Recovery Comments: API RW .15 @ 86 F Chlorides 40000

