



TRILOBITE TESTING, INC

DRILL STEM TEST REPORT

Woolsey Operating Co. LLC

12-35s-12w Barber Ks.

125 N. Market, Ste. 1000
Wichita Ks. 67202

Sternberger B#3

Job Ticket: 57855

DST#: 1

ATTN: Bill Klaver

Test Start: 2014.09.23 @ 14:46:34

GENERAL INFORMATION:

Formation: **Miss.**

Deviated: No Whipstock: ft (KB)

Time Tool Opened: 16:41:19

Time Test Ended: 23:21:49

Test Type: Conventional Bottom Hole (Initial)

Tester: Gary Pevoteaux

Unit No: 56

Interval: 4684.00 ft (KB) To 4836.00 ft (KB) (TVD)

Reference Elevations: 1361.00 ft (KB)

Total Depth: 4836.00 ft (KB) (TVD)

1349.00 ft (CF)

Hole Diameter: 7.88 inches Hole Condition: Poor

KB to GR/CF: 12.00 ft

Serial #: 8352 Outside

Press@RunDepth: 78.46 psig @ 4685.00 ft (KB)

Capacity: 8000.00 psig

Start Date: 2014.09.23

End Date:

2014.09.23

Last Calib.:

2014.09.23

Start Time: 14:46:39

End Time:

23:21:49

Time On Btm:

2014.09.23 @ 16:40:04

Time Off Btm:

2014.09.23 @ 21:10:49

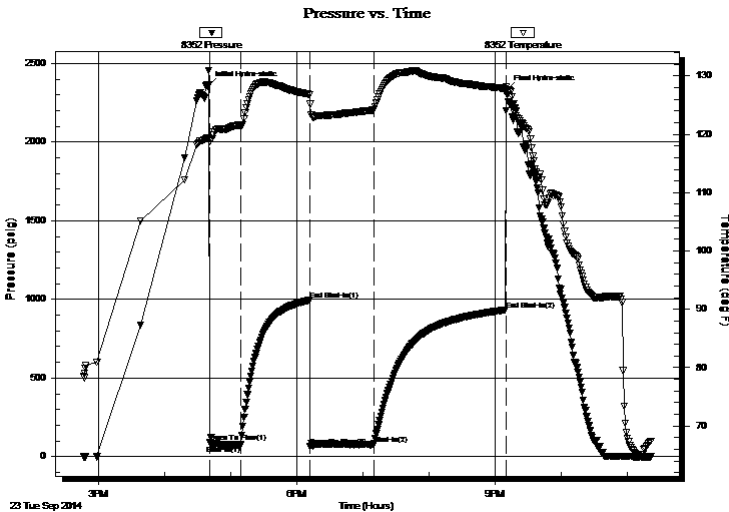
TEST COMMENT: IF: Strong blow. B.O.B in 1 1/2 mins. GTS in 23 mins. (see gas flow report)

IS: No blow.

FF: Strong blow. (see gas flow report)

FS: No blow.

PRESSURE SUMMARY



Time (Min.)	Pressure (psig)	Temp (deg F)	Annotation
0	2362.44	119.46	Initial Hydro-static
2	93.56	118.81	Open To Flow (1)
30	74.97	121.57	Shut-In(1)
92	995.28	126.83	End Shut-In(1)
93	66.25	125.18	Open To Flow (2)
150	78.46	124.18	Shut-In(2)
270	934.00	127.86	End Shut-In(2)
271	2336.03	126.82	Final Hydro-static

Recovery

Length (ft)	Description	Volume (bbl)
124.00	GCM/w o specs 7%g 93%m	0.61
92.00	GCM/w o specs 12%g 88%m	0.73

Gas Rates

	Choke (inches)	Pressure (psig)	Gas Rate (Mcf/d)
First Gas Rate	0.25	3.50	28.40
Last Gas Rate	0.25	3.00	27.60
Max. Gas Rate	0.25	8.00	35.54



**TRILOBITE
TESTING, INC**

DRILL STEM TEST REPORT

FLUID SUMMARY

Woolsey Operating Co. LLC

12-35s-12w Barber Ks.

125 N. Market, Ste. 1000
Wichita Ks. 67202

Sternberger B#3

Job Ticket: 57855

DST#: 1

ATTN: Bill Klaver

Test Start: 2014.09.23 @ 14:46:34

Mud and Cushion Information

Mud Type: Gel Chem

Cushion Type:

Oil API:

deg API

Mud Weight: 9.00 lb/gal

Cushion Length:

ft

Water Salinity:

4000 ppm

Viscosity: 57.00 sec/qt

Cushion Volume:

bbbl

Water Loss: 8.99 in³

Gas Cushion Type:

Resistivity: 0.00 ohm.m

Gas Cushion Pressure:

psig

Salinity: 4000.00 ppm

Filter Cake: 0.20 inches

Recovery Information

Recovery Table

Length ft	Description	Volume bbbl
124.00	GCM /w o specs 7%g 93%m	0.610
92.00	GCM /w o specs 12%g 88%m	0.726

Total Length: 216.00 ft

Total Volume: 1.336 bbl

Num Fluid Samples: 0

Num Gas Bombs: 1

Serial #: gp-1

Laboratory Name: Caraway

Laboratory Location: Liberal, KS

Recovery Comments:



**TRILOBITE
TESTING, INC.**

DRILL STEM TEST REPORT

GAS RATES

Woolsey Operating Co. LLC

12-35s-12w Barber Ks.

125 N. Market, Ste. 1000
Wichita Ks. 67202

Sternberger B#3

Job Ticket: 57855

DST#: 1

ATTN: Bill Klaver

Test Start: 2014.09.23 @ 14:46:34

Gas Rates Information

Temperature: 59 (deg F)
Relative Density: 0.65
Z Factor: 0.8

Gas Rates Table

Flow Period	Elapsed Time	Choke (inches)	Pressure (psig)	Gas Rate (Mcf/d)
1	30	0.25	3.50	28.40
2	10	0.25	8.00	35.54
2	20	0.25	6.00	32.36
2	30	0.25	5.00	30.78
2	40	0.25	4.00	29.19
2	50	0.25	4.00	29.19
2	60	0.25	3.00	27.60

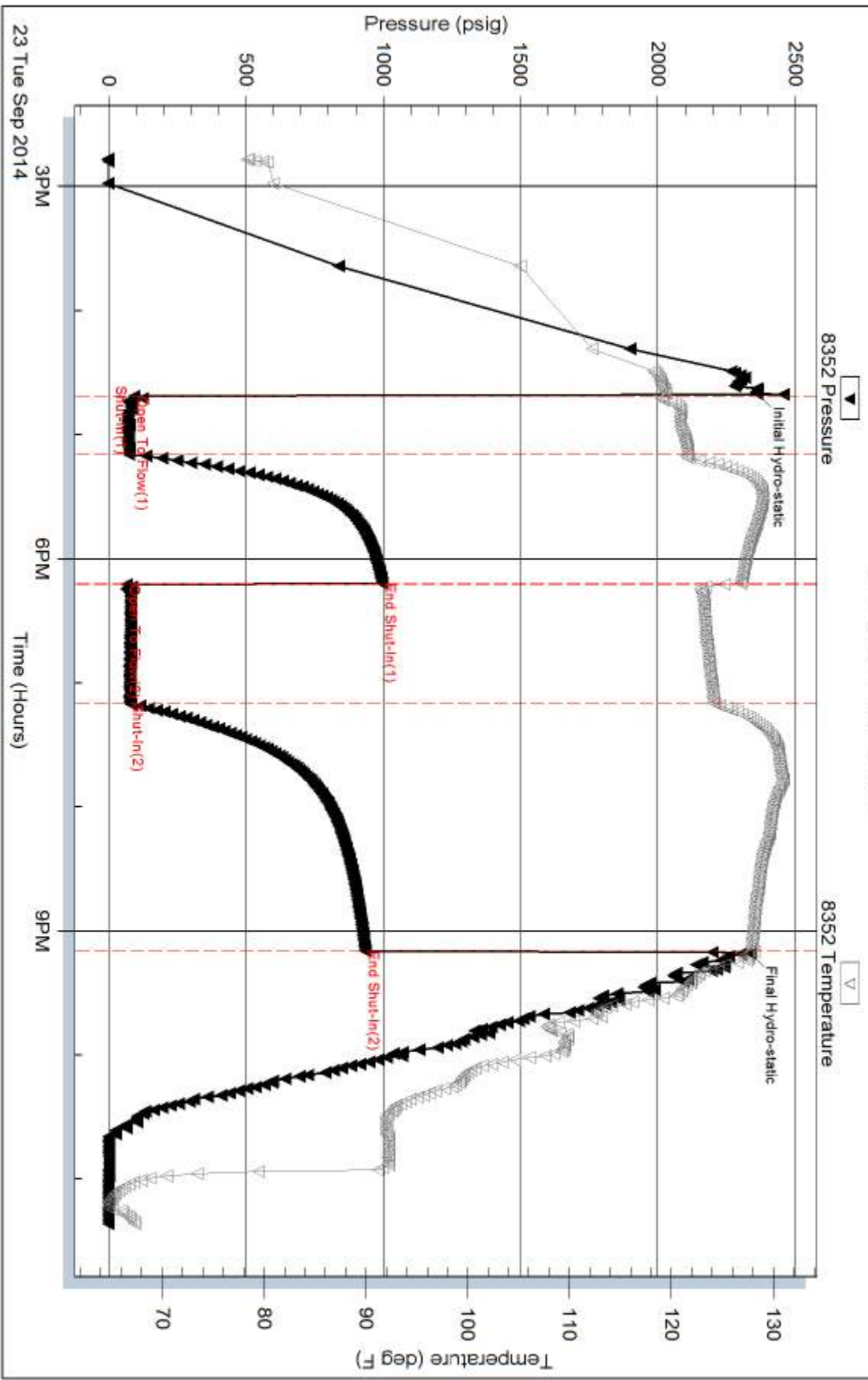
Serial #: 8352

Outside Woodsey Operating Co. LLC

Semberger B#3

DST Test Number: 1

Pressure vs. Time



Triobite Testing, Inc

Ref. No: 57855

Printed: 2014.09.24 @ 08:01:17