



**TRILOBITE  
TESTING, INC**

## DRILL STEM TEST REPORT

CG Oil Inc  
2550 Airbase Rd  
Victoria KS 67671  
  
ATTN: Roger Fisher

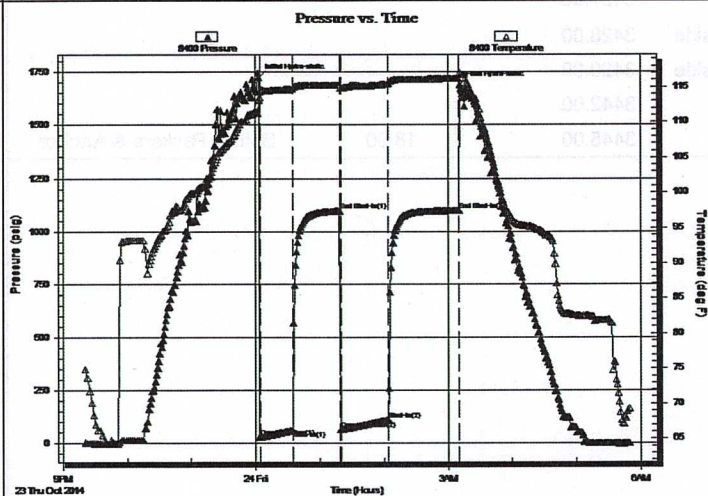
**28-16s-13w Barton,KS**  
  
**JMR #3**  
Job Ticket: 61876      **DST#: 1**  
Test Start: 2014.10.23 @ 21:20:00

### GENERAL INFORMATION:

Formation: **Arbuckle**  
Deviated: No      Whipstock:      ft (KB)  
Time Tool Opened: 00:03:30  
Time Test Ended: 05:48:30  
  
Interval: **3427.00 ft (KB) To 3445.00 ft (KB) (TVD)**  
Total Depth: 3445.00 ft (KB) (TVD)  
Hole Diameter: 7.88 inches      Hole Condition: Fair  
  
Test Type: Conventional Bottom Hole (Initial)  
Tester: Jared Scheck  
Unit No: S5  
  
Reference Elevations: 1986.00 ft (KB)  
1977.00 ft (CF)  
KB to GR/CF: 9.00 ft

**Serial #: 8400      Outside**  
Press@RunDepth: 1097.43 psig @ 3429.00 ft (KB)      Capacity: 5000.00 psig  
Start Date: 2014.10.23      End Date: 2014.10.24      Last Calib.: 2014.10.24  
Start Time: 21:21:00      End Time: 05:49:30      Time On Btm: 2014.10.24 @ 00:03:00  
Time Off Btm: 2014.10.24 @ 03:11:30

**TEST COMMENT:** IFP-30 Minutes-Fair blow built bottom of bucket in 30 minutes  
ISIP-45 Minutes-Very weak blow back  
FFP-45 Minutes-Fair blow built bottom of bucket in 41 minutes  
FSIP-60 Minutes-Very weak surface blow



### PRESSURE SUMMARY

Time (Min.)	Pressure (psig)	Temp (deg F)	Annotation
0	1725.68	113.07	Initial Hydro-static
1	28.18	113.53	Open To Flow (1)
32	57.85	114.67	Shut-In(1)
76	1096.07	115.23	End Shut-In(1)
77	62.14	114.82	Open To Flow (2)
121	109.08	115.42	Shut-In(2)
188	1097.43	116.22	End Shut-In(2)
189	1688.41	117.04	Final Hydro-static

### Recovery

Length (ft)	Description	Volume (bbl)
120.00	OW 5%oil 95%w ater	1.68
90.00	GCO 5%gas 95%oil	1.26

### Gas Rates

	Choke (inches)	Pressure (psig)	Gas Rate (Mcf/d)