



## DRILL STEM TEST REPORT

Prepared For: **Oolite Energy Corp.**

P.O. Box 9389  
Amarillo, TX 79105

ATTN: Austin Garner

### **Stoltzfus #4-3**

#### **3-34s-29w Meade,KS**

Start Date: 2014.10.09 @ 00:03:00

End Date: 2014.10.09 @ 15:27:00

Job Ticket #: 56570                      DST #: 1

Trilobite Testing, Inc  
1515 Commerce Parkway Hays, KS 67601  
ph: 785-625-4778 fax: 785-625-5620

Printed: 2014.10.14 @ 10:00:58



**TRILOBITE  
TESTING, INC**

# DRILL STEM TEST REPORT

Oolite Energy Corp.

**3-34s-29w Meade, KS**

P.O. Box 9389  
Amarillo, TX 79105

**Stoltzfus #4-3**

Job Ticket: 56570

**DST#: 1**

ATTN: Austin Garner

Test Start: 2014.10.09 @ 00:03:00

## GENERAL INFORMATION:

Formation: **Novinger**

Deviated: No Whipstock: ft (KB)

Time Tool Opened: 05:44:15

Time Test Ended: 15:27:00

Test Type: Conventional Bottom Hole (Initial)

Tester: Cornelio Landa III

Unit No: 67

**Interval: 5255.00 ft (KB) To 5300.00 ft (KB) (TVD)**

Reference Elevations: 2514.00 ft (KB)

Total Depth: 5300.00 ft (KB) (TVD)

2501.00 ft (CF)

Hole Diameter: 7.88 inches Hole Condition: Good

KB to GR/CF: 13.00 ft

**Serial #: 8968 Outside**

Press@RunDepth: 463.06 psig @ 5257.00 ft (KB)

Capacity: 8000.00 psig

Start Date: 2014.10.09

End Date:

2014.10.09

Last Calib.:

2014.10.09

Start Time: 00:03:05

End Time:

15:27:00

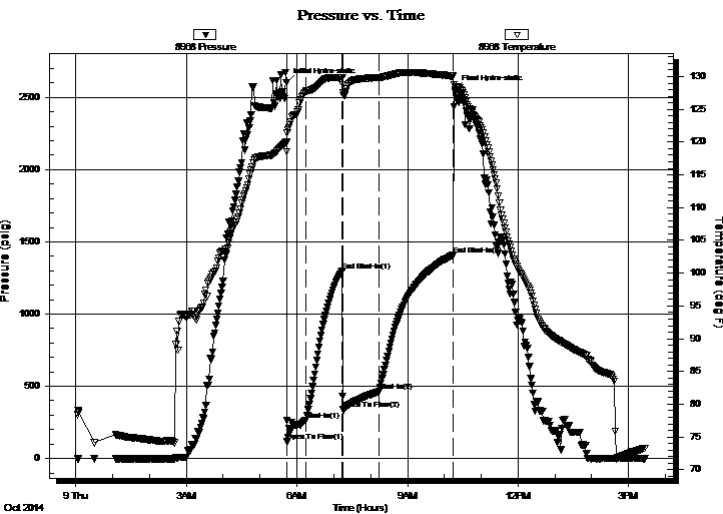
Time On Btm:

2014.10.09 @ 05:43:00

Time Off Btm:

2014.10.09 @ 10:17:45

**TEST COMMENT:** IF: BOB in 45 seconds  
IS: Bled off in 5 min.-BOB in 31 min.  
FF: BOB Immediately  
FS: Bled off in 3 min.- BOB in 30 mins.



## PRESSURE SUMMARY

Time (Min.)	Pressure (psig)	Temp (deg F)	Annotation
0	2601.86	119.99	Initial Hydro-static
2	115.93	121.46	Open To Flow (1)
32	265.31	127.78	Shut-In(1)
91	1298.28	129.83	End Shut-In(1)
92	338.11	127.58	Open To Flow (2)
151	463.06	129.86	Shut-In(2)
272	1409.85	130.05	End Shut-In(2)
275	2553.48	128.47	Final Hydro-static

## Recovery

Length (ft)	Description	Volume (bbl)
542.00	Gw 4g 96w	4.38
282.00	Ocm & G 15o 35m 50g	3.96
188.00	G & Ocm 10g 10o 80m	2.64
0.00	GIP=1472	0.00

## Gas Rates

	Choke (inches)	Pressure (psig)	Gas Rate (Mcf/d)



**TRILOBITE  
TESTING, INC**

## DRILL STEM TEST REPORT

Oolite Energy Corp.

**3-34s-29w Meade, KS**

P.O. Box 9389  
Amarillo, TX 79105

**Stoltzfus #4-3**

Job Ticket: 56570

**DST#: 1**

ATTN: Austin Garner

Test Start: 2014.10.09 @ 00:03:00

### GENERAL INFORMATION:

Formation: **Novinger**

Deviated: No Whipstock: ft (KB)

Time Tool Opened: 05:44:15

Time Test Ended: 15:27:00

Test Type: Conventional Bottom Hole (Initial)

Tester: Cornelio Landa III

Unit No: 67

**Interval: 5255.00 ft (KB) To 5300.00 ft (KB) (TVD)**

Total Depth: 5300.00 ft (KB) (TVD)

Hole Diameter: 7.88 inches Hole Condition: Good

Reference Elevations: 2514.00 ft (KB)

2501.00 ft (CF)

KB to GR/CF: 13.00 ft

**Serial #: 8969 Inside**

Press@RunDepth: psig @ 5257.00 ft (KB)

Start Date: 2014.10.09

End Date:

2014.10.09

Start Time: 00:03:05

End Time:

15:27:00

Capacity: 8000.00 psig

Last Calib.:

2014.10.09

Time On Btm:

Time Off Btm:

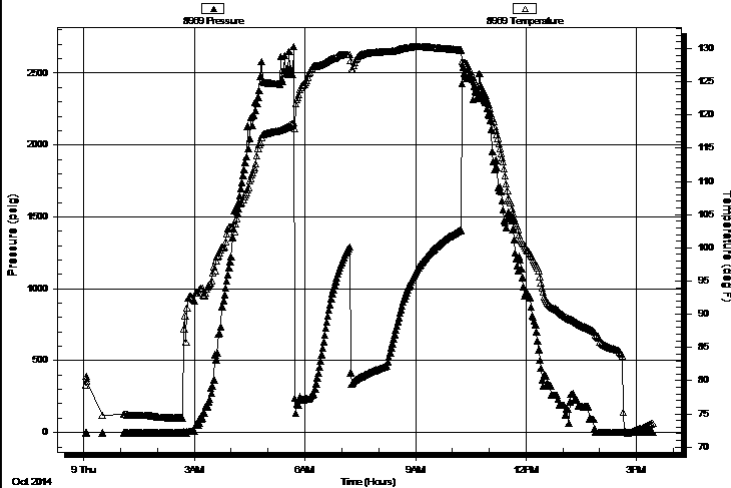
**TEST COMMENT:** IF: BOB in 45 seconds

IS: Bled off in 5 min.-BOB in 31 min.

FF: BOB Immediately

FS: Bled off in 3 min.- BOB in 30 mins.

Pressure vs. Time



### PRESSURE SUMMARY

Time (Min.)	Pressure (psig)	Temp (deg F)	Annotation

### Recovery

Length (ft)	Description	Volume (bbl)
542.00	Gw 4g 96w	4.38
282.00	Ocm & G 15o 35m 50g	3.96
188.00	G & Ocm 10g 10o 80m	2.64
0.00	GIP=1472	0.00

### Gas Rates

Choke (inches)	Pressure (psig)	Gas Rate (Mcf/d)



**TRILOBITE  
TESTING, INC**

# DRILL STEM TEST REPORT

**TOOL DIAGRAM**

Oolite Energy Corp.

**3-34s-29w Meade, KS**

P.O. Box 9389  
Amarillo, TX 79105

**Stoltzfus #4-3**

Job Ticket: 56570

**DST#: 1**

ATTN: Austin Garner

Test Start: 2014.10.09 @ 00:03:00

## Tool Information

Drill Pipe:	Length: 4887.00 ft	Diameter: 3.80 inches	Volume: 68.55 bbl	Tool Weight: 2500.00 lb
Heavy Wt. Pipe:	Length: 0.00 ft	Diameter: 0.00 inches	Volume: 0.00 bbl	Weight set on Packer: 28000.00 lb
Drill Collar:	Length: 354.00 ft	Diameter: 2.25 inches	Volume: 1.74 bbl	Weight to Pull Loose: 15000.00 lb
			<u>Total Volume: 70.29 bbl</u>	Tool Chased 0.00 ft
Drill Pipe Above KB:	13.00 ft			String Weight: Initial 94000.00 lb
Depth to Top Packer:	5255.00 ft			Final 98000.00 lb
Depth to Bottom Packer:	ft			
Interval between Packers:	45.00 ft			
Tool Length:	72.00 ft			
Number of Packers:	2	Diameter: 6.75 inches		

Tool Comments:

## Tool Description

Tool Description	Length (ft)	Serial No.	Position	Depth (ft)	Accum. Lengths
Change Over Sub	1.00			5229.00	
Shut In Tool	5.00			5234.00	
Hydraulic tool	5.00			5239.00	
Jars	5.00			5244.00	
Safety Joint	2.00			5246.00	
Packer	5.00			5251.00	27.00 Bottom Of Top Packer
Packer	4.00			5255.00	
Stubb	1.00			5256.00	
Change Over Sub	1.00			5257.00	
Recorder	0.00	8969	Inside	5257.00	
Recorder	0.00	8968	Outside	5257.00	
Drill Pipe	31.00			5288.00	
Change Over Sub	1.00			5289.00	
Perforations	8.00			5297.00	
Bullnose	3.00			5300.00	45.00 Bottom Packers & Anchor

**Total Tool Length: 72.00**



**TRILOBITE  
TESTING, INC**

# DRILL STEM TEST REPORT

**FLUID SUMMARY**

Oolite Energy Corp.

**3-34s-29w Meade,KS**

P.O. Box 9389  
Amarillo, TX 79105

**Stoltzfus #4-3**

Job Ticket: 56570

**DST#: 1**

ATTN: Austin Garner

Test Start: 2014.10.09 @ 00:03:00

## Mud and Cushion Information

Mud Type: Gel Chem

Cushion Type:

Oil API:

deg API

Mud Weight: 9.00 lb/gal

Cushion Length:

ft

Water Salinity:

56000 ppm

Viscosity: 44.00 sec/qt

Cushion Volume:

bbbl

Water Loss: 10.45 in<sup>3</sup>

Gas Cushion Type:

Resistivity: 0.00 ohm.m

Gas Cushion Pressure:

psig

Salinity: 4400.00 ppm

Filter Cake: 1.00 inches

## Recovery Information

Recovery Table

Length ft	Description	Volume bbbl
542.00	Gw 4g 96w	4.378
282.00	Ocm & G 15o 35m 50g	3.956
188.00	G & Ocm 10g 10o 80m	2.637
0.00	GIP=1472	0.000

Total Length: 1012.00 ft      Total Volume: 10.971 bbl

Num Fluid Samples: 0

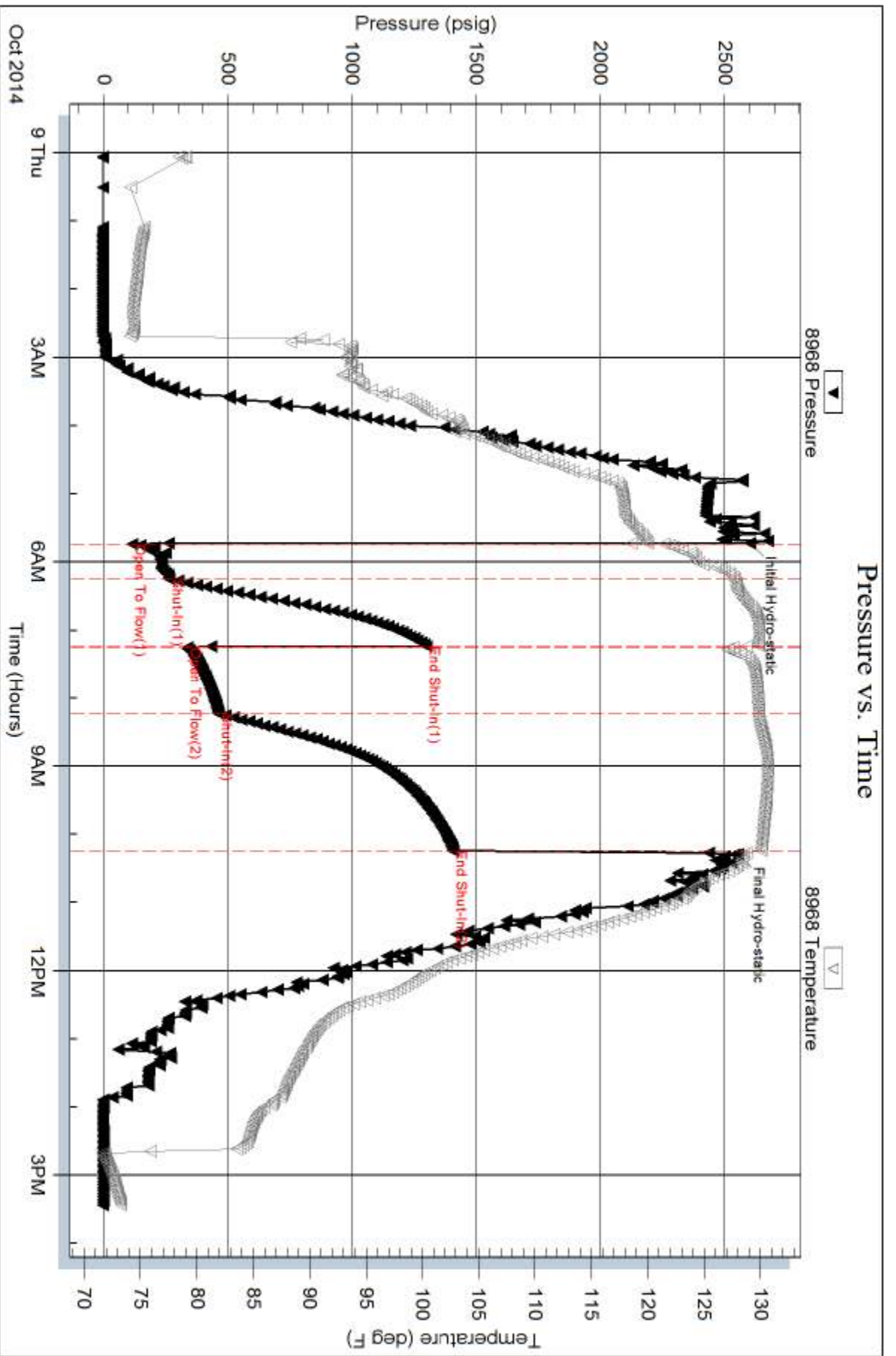
Num Gas Bombs: 0

Serial #:

Laboratory Name:

Laboratory Location:

Recovery Comments: RW .145 @ 66.8=56000



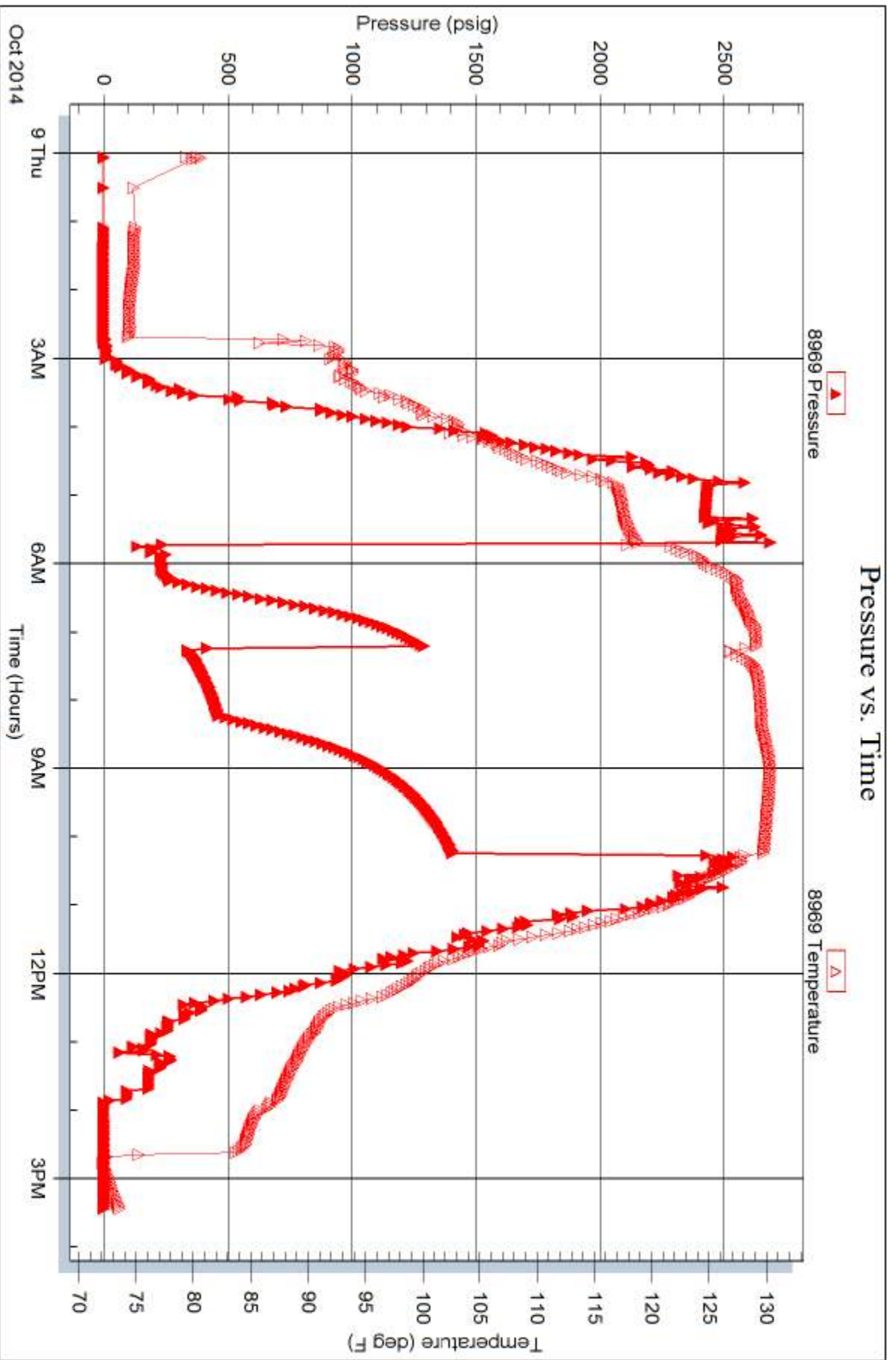
Serial #: 8969

Inside

Oolite Energy Corp.

Stoltzfus #4-3

DST Test Number: 1



Trilobite Testing, Inc

Ref. No: 56570

Printed: 2014.10.14 @ 10:01:00



# TRILOBITE TESTING INC.

1515 Commerce Parkway • Hays, Kansas 67601

## Test Ticket

NO. 56570

Well Name & No. Stoltfus #4-3 Test No. 1 Date 10-8-14  
 Company Dolite Energy Corp. Elevation 2514 KB 2501 GL  
 Address P.O. Box 9398, Amarillo, TX 79105  
 Co. Rep / Geo. Austin Garner Rig Tomcat #2  
 Location: Sec. 3 Twp. 34-S Rge. 29W Co. Meade State KS

Interval Tested 5255-5300 Zone Tested Novinger  
 Anchor Length 45' Drill Pipe Run 4887 Mud Wt. 9.2  
 Top Packer Depth 5251 Drill Collars Run 354' Vis 44  
 Bottom Packer Depth 5255 Wt. Pipe Run Ø WL 10.5  
 Total Depth 5300 Chlorides 4,400 ppm System LCM #7

Blow Description IF: B.o.b. in 45 seconds  
ISI: Bled off in 5 min - B.o.b. in 31 mins.  
FF: B.o.b. Immediately  
FSI: Bled off in 3 min. - B.o.b. in 30 mins.

Rec	Feet of	%gas	%oil	%water	%mud
<u>542</u>	<u>GW</u>	<u>4</u>			<u>96</u>
<u>282</u>	<u>OCM &amp; G</u>	<u>50</u>	<u>15</u>		<u>35</u>
<u>188</u>	<u>G + ocm</u>	<u>10</u>	<u>10</u>		<u>80</u>
	<u>GIP = 1472</u>				

Rec Total 1,012 BHT 129 Gravity — API RW 145 @ 66.8 °F Chlorides 4,400 ppm

(A) Initial Hydrostatic <u>2602</u>	<input checked="" type="checkbox"/> Test <u>1350</u>	T-On Location <u>23:40</u>
(B) First Initial Flow <u>116</u>	<input checked="" type="checkbox"/> Jars <u>250</u>	T-Started <u>00:03</u>
(C) First Final Flow <u>265</u>	<input checked="" type="checkbox"/> Safety Joint <u>75</u>	T-Open <u>05:44</u>
(D) Initial Shut-In <u>1298</u>	<input checked="" type="checkbox"/> Circ Sub <u>N/C 450</u>	T-Pulled <u>10:14</u>
(E) Second Initial Flow <u>338</u>	<input checked="" type="checkbox"/> Hourly Standby <u>4 1/2 hrs</u>	T-Out <u>15:27</u>
(F) Second Final Flow <u>463</u>	<input checked="" type="checkbox"/> Mileage <u>140 R-T 217</u>	Comments <u>4 1/2 hrs Standby</u>
(G) Final Shut-In <u>1410</u>	<input type="checkbox"/> Sampler	
(H) Final Hydrostatic <u>2553</u>	<input type="checkbox"/> Straddle	

Initial Open 30  Shale Packer 250  Ruined Shale Packer  
 Initial Shut-In 60  Extra Packer  Ruined Packer  
 Final Flow 60  Extra Recorder  Extra Copies  
 Final Shut-In 120  Day Standby 150 Sub Total 0  
 Accessibility No stops From central to Rig floor Total 2742  
 Sub Total 2742 MP/DST Disc't

Approved By Austin Garner Our Representative Colbdata CL III

TriLOBite Testing Inc. shall not be liable for damaged of any kind of the property or personnel of the one for whom a test is made, or for any loss suffered or sustained, directly or indirectly, through the use of its equipment, or its statements or opinion concerning the results of any test, tools lost or damaged in the hole shall be paid for at cost by the party for whom the test is made.