



DIAMOND TESTING
P.O. Box 157
HOISINGTON, KANSAS 67544
(800) 542-7313
DRILL-STEM TEST TICKET
FILE: Stoll 1-32 dst 4

TIME ON: 18:59 Nov 7
TIME OFF: 03:18 Nov8

Company Grand Mesa Operating Company Lease & Well No. Stoll 1-32
Contractor Duke Drilling Rig 4 Charge to Grand Mesa Operating Company
Elevation 3073 Sur Formation Marmaton Effective Pay _____ Ft. Ticket No. RR116
Date 11/07/2014 Sec. 32 Twp. 6 S Range 33 W County Scott State KANSAS
Test Approved By Bob Schreiber Diamond Representative RICKY RAY

Formation Test No. 4 Interval Tested from 4441 ft. to 4488 ft. Total Depth 4488 ft.
Packer Depth 4436 ft. Size 6 3/4 in. Packer depth _____ ft. Size 6 3/4 in.
Packer Depth 4441 ft. Size 6 3/4 in. Packer depth _____ ft. Size 6 3/4 in.

Depth of Selective Zone Set _____

Top Recorder Depth (Inside) 4423 ft. Recorder Number 0062 Cap. 5000 P.S.I.
Bottom Recorder Depth (Outside) 4477 ft. Recorder Number 5954 Cap. 5000 P.S.I.
Below Straddle Recorder Depth _____ ft. Recorder Number _____ Cap. _____ P.S.I.

Mud Type CHEM Viscosity 49 Drill Collar Length _____ ft. I.D. 2 1/4 in.
Weight 9.2 Water Loss 9.6 cc. Weight Pipe Length _____ ft. I.D. 2 7/8 in.
Chlorides 9000 P.P.M. Drill Pipe Length 4409 ft. I.D. 3 1/2 in.
Jars: Make STERLING Serial Number 8 Test Tool Length 32 ft. Tool Size 3 1/2-IF in.
Did Well Flow? NA Reversed Out NA Anchor Length 47A(16P) ft. Size 4 1/2-FH in.
Main Hole Size 7 7/8 Tool Joint Size 4 1/2 xh in. Surface Choke Size 1 in. Bottom Choke Size 5/8 in.

Blow: 1st Open: 1/4" Blow (BOB in 14 mins) 1" BB
2nd Open: 1/4" Blow (BOB in 15 mins) 4 1/4" BB

Recovered 679 ft. of GIP
Recovered 375 ft. of O 100% O 27 Gravity @ 60 Deg
Recovered 62 ft. of HGO 30% G 70% O
Recovered 437 ft. of Total Fluid

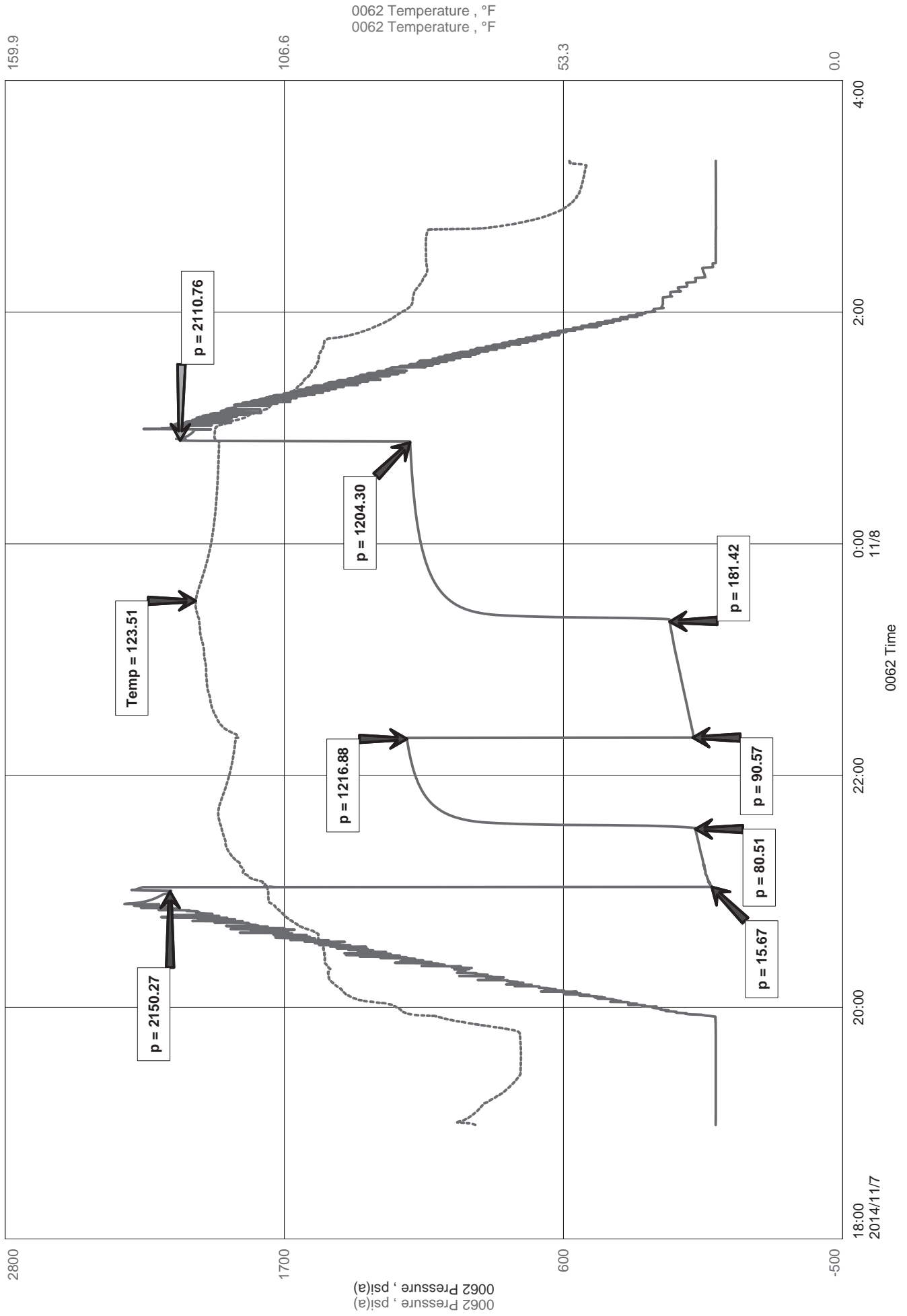
Recovered _____ ft. of _____	Price Job
Recovered _____ ft. of _____	Other Charges
Remarks: Tool Sample: <u>87 % O</u> <u>13 % M</u>	Insurance
	Total

Time Set Packer(s) 9:03 PM Nov 7 ^{A.M.}/_{P.M.} Time Started Off Bottom 12:48 AM Nov 8 ^{A.M.}/_{P.M.} Maximum Temperature 124

Initial Hydrostatic Pressure..... (A) 2150 P.S.I.
Initial Flow Period..... Minutes 30 (B) 16 P.S.I. to (C) 81 P.S.I.
Initial Closed In Period..... Minutes 45 (D) 1217 P.S.I.
Final Flow Period..... Minutes 60 (E) 91 P.S.I. to (F) 181 P.S.I.
Final Closed In Period..... Minutes 90 (G) 1204 P.S.I.
Final Hydrostatic Pressure..... (H) 2111 P.S.I.

Diamond Testing shall not be liable for damages of any kind to the property or personnel of the one for whom a test is made or for any loss suffered or sustained, directly or indirectly, through the use of its equipment, or its statement or opinion concerning the result of any test. Tools lost or damaged in the hole shall be paid for at cost by the party for whom the test is made.

Stoll 1-32





Diamond Testing LLC

P.O. Box 157

HoisingtonKS 67544

Ricky Ray - Tester

(620) 617-7261

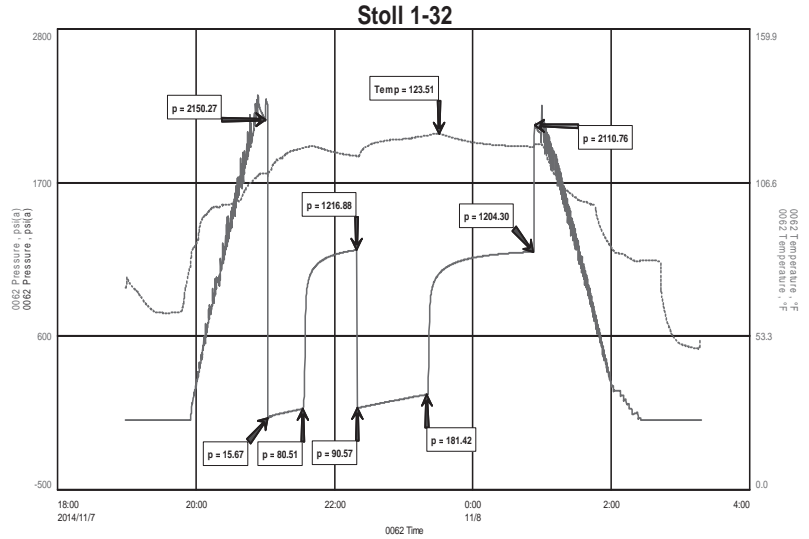
Wellsite Report

General Information

Company Name	Grand Mesa Operating Company
Contact	Michael J Riely
Well Operator	Grand Mesa Operating Company
Well Name	Stoll 1-32
Surface Location	Sec:32-6s-33w (Scott County)
Field	Wildcat
Well Type	Vertical
Pool	Wildcat
Test Purpose (AEUB)	Initial Test
Qualified By	Bob Schreiber
Gauge Name	0062

Test Information

Job Number	RR116
Test Type	Drill Stem Test
Well Fluid Type	01 Oil
Formation	Dst 4 Marmaton (4441-4488)
Start Test Date	2014/11/07 YYYY/MM/DD
Start Test Time	18:59:00 HH:mm:ss
Final Test Date	2014/11/08 YYYY/MM/DD
Final Test Time	03:18:00 HH:mm:ss



Test Results

Recovery:

679'	GIP		
375'	O	100% O	27 Gravity @ 60 Deg
62'	HGO	30% G	70% O
437'	Total Fluid		

Tool Sample: 87% O 13% M