



**TRILOBITE  
TESTING, INC.**

# DRILL STEM TEST REPORT

Stelbar Oil Corp., Inc.

**S12-17s-33w Scott/KS**

1625 N. Waterfront PKWY  
Wichita, KS 67206-6602

**Ellis 2-12**

Job Ticket: 59185

**DST#: 1**

ATTN: Dave Goldak

Test Start: 2014.11.03 @ 12:00:00

## GENERAL INFORMATION:

Formation: **LKC "D"**

Deviated: No Whipstock: ft (KB)

Time Tool Opened: 13:58:30

Time Test Ended: 17:51:50

Test Type: Conventional Bottom Hole (Initial)

Tester: Chuck Smith

Unit No: 61

**Interval: 4046.00 ft (KB) To 4074.00 ft (KB) (TVD)**

Reference Elevations: 2986.00 ft (KB)

Total Depth: 4074.00 ft (KB) (TVD)

2981.00 ft (CF)

Hole Diameter: 7.88 inches Hole Condition: Good

KB to GR/CF: 5.00 ft

**Serial #: 8357**

**Inside**

Press @ Run Depth: 42.80 psig @ 4047.00 ft (KB)

Capacity: 8000.00 psig

Start Date: 2014.11.03

End Date: 2014.11.03

Last Calib.: 2014.11.03

Start Time: 12:00:02

End Time: 17:51:49

Time On Btm: 2014.11.03 @ 13:56:50

Time Off Btm: 2014.11.03 @ 16:01:40

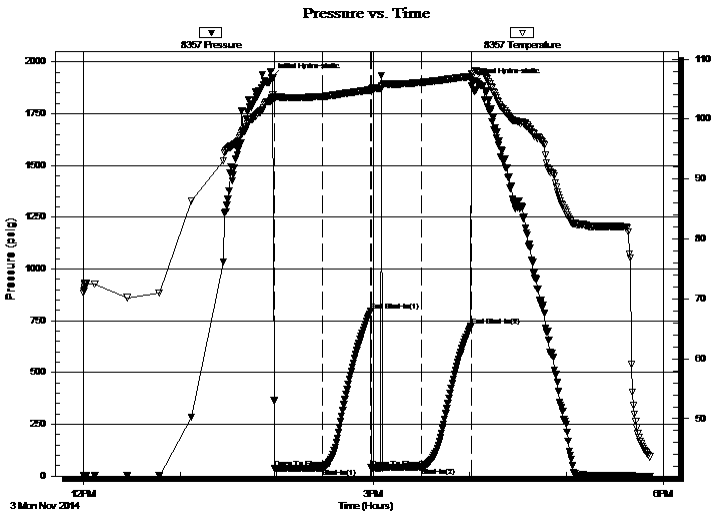
**TEST COMMENT:** 30- Tool slid 6', mud dropped 4', 1" Blow died @ 1 min.

30- No return.

30- No blow, flushed tool, no blow.

30- No return.

## PRESSURE SUMMARY



Time (Min.)	Pressure (psig)	Temp (deg F)	Annotation
0	1922.74	103.36	Initial Hydro-static
2	37.69	103.54	Open To Flow (1)
32	39.70	103.77	Shut-In(1)
62	795.01	104.88	End Shut-In(1)
62	39.94	104.61	Open To Flow (2)
93	42.80	106.11	Shut-In(2)
124	723.35	107.11	End Shut-In(2)
125	1898.01	107.55	Final Hydro-static

## Recovery

Length (ft)	Description	Volume (bbl)
0.00	RW: @ Degrees F= PPM	0.00
50.00	OSM 100m	0.25

## Gas Rates

	Choke (inches)	Pressure (psig)	Gas Rate (Mcf/d)



**TRILOBITE  
TESTING, INC.**

# DRILL STEM TEST REPORT

**FLUID SUMMARY**

Stelbar Oil Corp., Inc.

**S12-17s-33w Scott/KS**

1625 N. Waterfront PKWY  
Wichita, KS 67206-6602

**Ellis 2-12**

Job Ticket: 59185

**DST#: 1**

ATTN: Dave Goldak

Test Start: 2014.11.03 @ 12:00:00

## Mud and Cushion Information

Mud Type: Gel Chem

Cushion Type:

Oil API:

deg API

Mud Weight: 9.00 lb/gal

Cushion Length:

ft

Water Salinity:

ppm

Viscosity: 53.00 sec/qt

Cushion Volume:

bbbl

Water Loss: 7.20 in<sup>3</sup>

Gas Cushion Type:

Resistivity: ohm.m

Gas Cushion Pressure:

psig

Salinity: 4000.00 ppm

Filter Cake: 1.00 inches

## Recovery Information

Recovery Table

Length ft	Description	Volume bbl
0.00	RW: @ Degrees F = PPM	0.000
50.00	OSM 100m	0.246

Total Length: 50.00 ft      Total Volume: 0.246 bbl

Num Fluid Samples: 0

Num Gas Bombs: 0

Serial #:

Laboratory Name:

Laboratory Location:

Recovery Comments: Sampler: 150 psi 2000ML OSM total vol. 2000ML

