



TRILOBITE TESTING, INC

DRILL STEM TEST REPORT

Stelbar Oil Corp., Inc.

S12-17s-33w Scott/KS

1625 N. Waterfront PKWY
Wichita, KS 67206-6602

Ellis 2-12

Job Ticket: 59186

DST#: 2

ATTN: Dave Goldak

Test Start: 2014.11.04 @ 23:35:00

GENERAL INFORMATION:

Formation: **Pleasanton**

Deviated: No Whipstock: ft (KB)

Time Tool Opened: 01:33:00

Time Test Ended: 05:19:30

Test Type: Conventional Bottom Hole (Reset)

Tester: Chuck Smith

Unit No: 61

Interval: 4338.00 ft (KB) To 4366.00 ft (KB) (TVD)

Reference Elevations: 2986.00 ft (KB)

Total Depth: 4366.00 ft (KB) (TVD)

2981.00 ft (CF)

Hole Diameter: 7.88 inches Hole Condition: Good

KB to GR/CF: 5.00 ft

Serial #: 8357

Inside

Press@RunDepth: 28.13 psig @ 4339.00 ft (KB)

Capacity: 8000.00 psig

Start Date: 2014.11.04

End Date:

2014.11.05

Last Calib.: 2014.11.05

Start Time: 23:35:02

End Time:

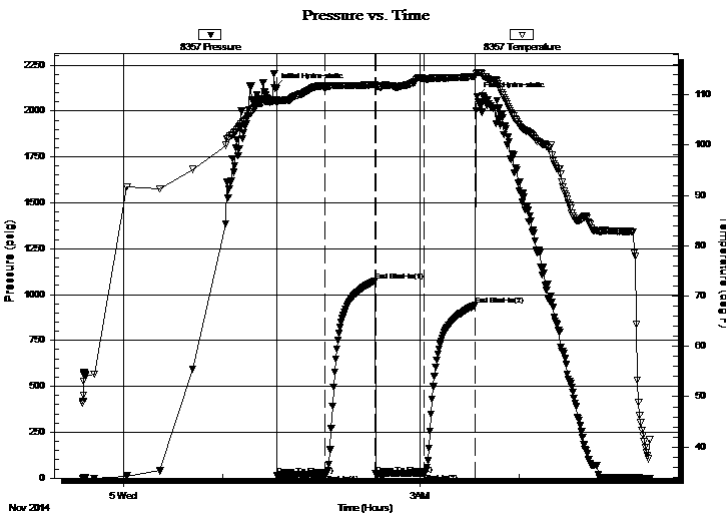
05:19:30

Time On Btm: 2014.11.05 @ 01:31:30

Time Off Btm: 2014.11.05 @ 03:34:40

TEST COMMENT: 30- 1/2" Blow .
30- No return.
30- No blow .
30- No return.

PRESSURE SUMMARY



Time (Min.)	Pressure (psig)	Temp (deg F)	Annotation
0	2128.11	108.81	Initial Hydro-static
2	15.37	108.46	Open To Flow (1)
31	21.23	111.50	Shut-In(1)
62	1075.76	112.04	End Shut-In(1)
62	22.61	111.55	Open To Flow (2)
91	28.13	113.20	Shut-In(2)
122	942.72	113.64	End Shut-In(2)
124	2076.43	114.46	Final Hydro-static

Recovery

Length (ft)	Description	Volume (bbl)
10.00	OSM 100m	0.05

Gas Rates

Choke (inches)	Pressure (psig)	Gas Rate (Mcf/d)

* Recovery from multiple tests



**TRILOBITE
TESTING, INC**

DRILL STEM TEST REPORT

FLUID SUMMARY

Stelbar Oil Corp., Inc.

S12-17s-33w Scott/KS

1625 N. Waterfront PKWY
Wichita, KS 67206-6602

Ellis 2-12

Job Ticket: 59186

DST#: 2

ATTN: Dave Goldak

Test Start: 2014.11.04 @ 23:35:00

Mud and Cushion Information

Mud Type: Gel Chem

Cushion Type:

Oil API:

deg API

Mud Weight: 9.00 lb/gal

Cushion Length:

ft

Water Salinity:

ppm

Viscosity: 58.00 sec/qt

Cushion Volume:

bbbl

Water Loss: 7.19 in³

Gas Cushion Type:

Resistivity: ohm.m

Gas Cushion Pressure:

psig

Salinity: 4000.00 ppm

Filter Cake: 1.00 inches

Recovery Information

Recovery Table

Length ft	Description	Volume bbl
10.00	OSM 100m	0.049

Total Length: 10.00 ft Total Volume: 0.049 bbl

Num Fluid Samples: 0

Num Gas Bombs: 0

Serial #:

Laboratory Name:

Laboratory Location:

Recovery Comments: Sampler: 10 psi 2000ML OSM total volume 2000ML

