



TRILOBITE TESTING, INC.

DRILL STEM TEST REPORT

Stelbar Oil Corp., Inc.

S12-17s-33w Scott/KS

1625 N. Waterfront PKWY
Wichita, KS 67206-6602

Ellis 2-12

Job Ticket: 59188

DST#: 4

ATTN: Dave Goldak

Test Start: 2014.11.06 @ 23:08:00

GENERAL INFORMATION:

Formation: **Johnson**

Deviated: No Whipstock: ft (KB)

Time Tool Opened: 01:16:40

Time Test Ended: 07:38:09

Test Type: Conventional Bottom Hole (Reset)

Tester: Chuck Smith

Unit No: 61

Interval: 4580.00 ft (KB) To 4634.00 ft (KB) (TVD)

Reference Elevations: 2986.00 ft (KB)

Total Depth: 4634.00 ft (KB) (TVD)

2981.00 ft (CF)

Hole Diameter: 7.88 inches Hole Condition: Good

KB to GR/CF: 5.00 ft

Serial #: 8357

Inside

Press@RunDepth: 47.03 psig @ 4583.00 ft (KB)

Capacity: 8000.00 psig

Start Date: 2014.11.06

End Date:

2014.11.07

Last Calib.: 2014.11.07

Start Time: 23:08:02

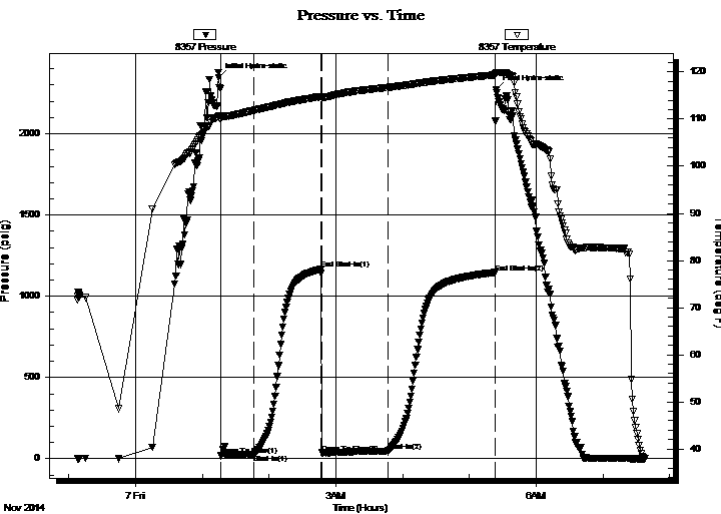
End Time:

07:38:10

Time On Btm: 2014.11.07 @ 01:14:30

Time Off Btm: 2014.11.07 @ 05:24:00

TEST COMMENT: 30- 6" Blow .
60- No return.
60- B.O.B. @ 28 min.
90- 1/2" Return



PRESSURE SUMMARY

Time (Min.)	Pressure (psig)	Temp (deg F)	Annotation
0	2345.23	110.50	Initial Hydro-static
3	19.15	109.87	Open To Flow (1)
32	28.83	111.81	Shut-In(1)
92	1165.43	114.76	End Shut-In(1)
93	35.80	114.56	Open To Flow (2)
153	47.03	116.72	Shut-In(2)
249	1146.32	119.35	End Shut-In(2)
250	2268.97	119.90	Final Hydro-static

Recovery

Length (ft)	Description	Volume (bbl)
0.00	280' GIP	0.00
90.00	GMCO 20g 5m 75o	0.44

Gas Rates

	Choke (inches)	Pressure (psig)	Gas Rate (Mcf/d)

* Recovery from multiple tests



**TRILOBITE
TESTING, INC**

DRILL STEM TEST REPORT

FLUID SUMMARY

Stelbar Oil Corp., Inc.

S12-17s-33w Scott/KS

1625 N. Waterfront PKWY
Wichita, KS 67206-6602

Ellis 2-12

Job Ticket: 59188

DST#: 4

ATTN: Dave Goldak

Test Start: 2014.11.06 @ 23:08:00

Mud and Cushion Information

Mud Type: Gel Chem
Mud Weight: 9.00 lb/gal
Viscosity: 59.00 sec/qt
Water Loss: 8.79 in³
Resistivity: ohm.m
Salinity: 6400.00 ppm
Filter Cake: 1.00 inches

Cushion Type:
Cushion Length: ft
Cushion Volume: bbl
Gas Cushion Type:
Gas Cushion Pressure: psig

Oil API: 29 deg API
Water Salinity: ppm

Recovery Information

Recovery Table

Length ft	Description	Volume bbl
0.00	280' GIP	0.000
90.00	GMCO 20g 5m 75o	0.443

Total Length: 90.00 ft Total Volume: 0.443 bbl

Num Fluid Samples: 0 Num Gas Bombs: 0 Serial #:

Laboratory Name: Laboratory Location:

Recovery Comments: API: 27 @ 40 Degrees F = 29.

Sampler: 500 psi 2 CU/Ft 500 ML gas 1400 ML oil 100 ML mud
Total volume 2000 ML

Pressure vs. Time

